

Detailed investigation of multi-scale fracture networks in glacially abraded crystalline bedrock at Åland Islands, Finland

Nikolas Ovaskainen^{1,2}, Pietari Skyttä², Nicklas Nordbäck^{1,2}, and Jon Engström¹

¹Geological Survey of Finland, P.O. Box 96, Espoo, FI-02151, Finland

²University of Turku, Department of Geography and Geology, Finland

Correspondence: Nikolas Ovaskainen (nikolas.ovaskainen@gtk.fi)

Abstract. Using multiple scales of observation in studying the fractures of the bedrock increases the reliability and representativeness of the respective studies. This is because the discontinuities, i.e., the fractures, in the bedrock lack any characteristic length and instead occur within a large range of scales of approximately 10 orders of magnitude. Consequently, fracture models need to be constructed based on representative multi-scale datasets

5 ~~to enable valid interpolation and extrapolation of common scaling laws to all fracture sizes.~~

In this paper, we combine a detailed bedrock fracture study from an extensive bedrock outcrop area with lineament interpretation using Light Detection And Ranging (LiDAR) and geophysical data. Our study offers lineament data in an intermediary length range (100-500 m) missing from Discrete Fracture Network -modelling conducted at Olkiluoto, a nuclear spent fuel facility in Finland. ~~In addition, this study also provides a robust~~ Our analysis provides insights into multi-scale ~~fracture and lineament dataset which has been thoroughly analysed for the purposes of understanding the uncertainties and differences in the different datasets~~ length distributions of lineaments and fractures and to the effect of glaciations on lineament and fracture data.

The best fit to model the lineaments and fracture lengths with a common power-law resulted in an exponent of -1.13. However, the fractures and lineaments might follow distinct power-laws, or other statistical distributions, rather than a common one. When categorising data by orientation, we could highlight differences in length distributions possibly related to glaciations.

15 Our analysis further ~~eovers~~ includes the topological, scale-independent, fracture network characteristics.

~~Results of our study include the discovery of three distinct azimuth sets, N-S, NE-SW and WNW-ESE, both single scale and multi-scale power-law models for fracture and lineaments and further insight into~~ For example, we noticed a trend of decreasing apparent connectivity of fracture networks as the scale of observation increases. ~~Specifically, a multi-scale power-law exponent of -1.13 is fitted to fracture and lineament lengths although we found that individually the fractures and lineaments might follow~~

20 ~~distinct power-laws rather than a common one.~~

Copyright statement. TEXT

1 Introduction

Review

1.1 Multi-scale study of fracture networks

25 ~~Fracture networks form the main pathways for fluid flow in fractured crystalline rocks~~ Multi-scale fracture studies have
mainly focused on sedimentary rock environments due to for example the significance of fracture properties on hydrocarbon
exploration (Nelson, 1985). More recently, the needs of geothermal reservoir characterisation (e.g., Piipponen et al., 2022; Frey et al., 2022
and contaminant transport modelling (e.g., Hartley et al., 2018) have increased the number of studies conducted in crystalline
environments (e.g., Chabani et al., 2021; Bertrand et al., 2015; Bossennec et al., 2021). In crystalline rocks, where the matrix
30 is largely impermeable~~(Davy et al., 2006)~~, fracture networks form the main pathways for fluid flow (Nelson, 1985; Davy et al., 2006)
. Understanding the fluid flow in such a system is challenging, since fractures typically lack a characteristic length (Heffer and
Bevan, 1990) and fractures of all sizes may contribute to the fluid flow (Davy et al., 2006), but it is crucial for contaminant
transport modelling and geothermal characterisation. Fracture lengths and the collective fracture network sizes span approxi-
35 mately 10 orders of magnitude (Marrett et al., 1999) from microfractures within individual mineral grains to continental scale
tectonic structures (Bonnet et al., 2001). Modern methods of fracture and lineament interpretation, used in multi-scale studies,
typically include outcrop-based fracture digitisation and digital elevation model and geophysics -based lineament interpretation
(Bertrand et al., 2015; Hardebol et al., 2015; Dichiarante et al., 2020; Loza Espejel et al., 2020; Chabani et al., 2021; Palamakumbura et al.

Characteristics of the fracture and lineament networks, such as length and orientation distributions, typically have similarities
40 across the whole scale range (See Heffer and Bevan, 1990; Bonnet et al., 2001, and references within), and in such cases the
properties are said to be scalable. However, ~~to establish~~ establishing robust scaling laws ~~that can~~ with the capacity to predict
fracture characteristics across multiple scales of observation ~~, the characteristics should be investigated~~ requires conducting
fracture investigations using a combination of ~~multi-scale methods~~ , such as outcrop fracture data collection and the analysis of
remotely sensed lineament trace maps. This ~~methods and preferably from multiple scales of observation by collecting fracture~~
45 and lineament data. Firstly, this approach will resolve if the fractures and lineaments have fractal or self-similar properties.
Secondly, the multi-scale approach will increase the overall applicability and reduce the uncertainty associated with fracture
network investigations (Bonnet et al., 2001; Bour et al., 2002; Davy et al., 2010; Bertrand et al., 2015; Heffer and Bevan, 1990;
Odling, 1997; Marrett et al., 1999; Chabani et al., 2021; Palamakumbura et al., 2020). For a given fracture network, scalability
may apply ~~for all or just for some~~ to either all, or a limited set of specific characteristics of the network ~~such as lengths~~ , such
50 as the commonly studied lengths (e.g., Bertrand et al., 2015; Dichiarante et al., 2020) or azimuth distributions (e.g., Odling,
1997), while other properties appear scale-dependent.

~~Due to the unavailability of a single method that can be used to map brittle bedrock structures in all the possible scales in~~
~~which they occur, multi-scale studies must use multiple methods. Modern methods of lineament and fracture interpretation used~~
~~in~~ Comparisons between multiple scales often include the lengths, intensities and azimuths (e.g., Bertrand et al., 2015; Hardebol et al., 2015

55 ~~but recent interest has developed towards using~~ multi-scale ~~studies typically include outcrop-based fracture digitisation and~~
~~digital elevation model and geophysics-based lineament interpretation (Bertrand et al., 2015; Hardebol et al., 2015; Dichiarante et al., 2020~~
~~. Multi-scale studies have earlier been mainly restricted to sedimentary rock environments due to~~ data to evaluate the scalability
of topological fracture network characteristics (e.g., Loza Espejel et al., 2020; Dichiarante et al., 2020) as the topological characteristics
are scale-independent by definition. However, in reality, recent studies (e.g., Ovaskainen, 2020; Nixon et al., 2012) have shown
60 that e.g., the inherent differences in source rasters used in lineament or fracture interpretation (e.g., the significance of fracture
properties on hydrocarbon exploration (?). More recently, the needs of geothermal reservoir characterisation (e.g., Piipponen et al., 2022; ?)
and contaminant transport modelling (e.g., Hartley et al., 2018) have increased the number of studies conducted in crystalline
environments (e.g., Chabani et al., 2021; Bertrand et al., 2015; Bossennee et al., 2021). digital elevation model for lineaments
vs. RGB-image for fractures) could influence the resulting topological network parameters.

65 Other uncertainties within the multi-scale investigations may relate to the method, ~~scale or~~ the geological character of the site
or the scale of the study. The chosen survey method within a site-specific study will limit the scale of observation, including e.g.,
the observed minimum and maximum fracture lengths (Bonnet et al., 2001; Heffer and Bevan, 1990), or filtering of the smallest
fractures, due to the limited resolution of aerial images (Prabhakaran et al., 2019). Similar issues regarding the uncertainty occur
across studies, and consequently, systematic data gaps occur across fracture datasets (Marrett, 1996; Loza Espejel et al., 2020;
70 Chabani et al., 2021). ~~An example regarding the absence of fractures with intermediate lengths (100–500 m) is provided from~~
~~the Discrete Fracture Network (DFN)-modelling conducted at Olkiluoto, a nuclear waste disposal facility on the west coast of~~
~~Finland (Fox et al., 2012). Without published data from the intermediate length gap (100–500 m) the determination of common~~
~~power-law exponents for fracture and lineament length data suffers from a significant uncertainty, and the practical significance~~
~~of the missing data is highlighted as fractures of these lengths are considered potentially hazardous to the integrity of spent~~
75 ~~fuel containers if earthquake-induced slip should occur along such fractures that intersect the containers at the disposal site~~
~~(Cottrell, 2022).~~

The character of the investigation site may affect the selection of the study method, but also cause uncertainty in the conti-
nuity and extent of observation. For field surveys conducted in areas of glacial drift, such as Finland, it is typically impossible
to map structures longer than a couple of tens of meters due to ~~ensoring~~ masking by quaternary deposits and consequent
80 lack of continuous ~~available~~ outcrops. Furthermore, different geological phenomena operate at different scales with different
intensities, such as glacial erosion, which preferentially erodes intensely fractured deformation zones (Glasser et al., 2020;
Dühnforth et al., 2010; Skyttä et al., 2015). In contrast, polishing and abrasion dominate in more intact parts of the bedrock
(Dühnforth et al., 2010; Woodard et al., 2019) where individual fractures play an insignificant role in channeling the erosion.
The possibility that brittle structures from different scales have variance in their fractal nature (Davy et al., 2010) further
85 ~~emphasies~~ emphasises the importance of multi-scale studies. An example regarding the absence of fractures in a specific scale
of observation is provided from Olkiluoto, a nuclear waste disposal in Finland, where there is a lack of data on intermediate
length fractures (100–500 m; Fox et al., 2012). This is is an issue in the Discrete Fracture Network (DFN) -modelling because
without published data from the intermediate length gap, the determination of common power-law exponents for fracture and
lineament length data suffers from a significant uncertainty. The significance of data from this gap is highlighted as fractures of

90 these lengths are considered potentially hazardous to the integrity of spent fuel containers at nuclear waste repositories due to potential for reactivation (Cottrell, 2022) and due to the DFN-model affecting the subsequent contaminant transport modelling (Hartley et al., 2018).

Although multi-scale studies are affected by the above uncertainties, the results and comparisons between different scales and used methods are useful for identifying and quantifying the uncertainties and biases that vary between scales and methods. Comparisons commonly include the analysis of geometric trace properties such as lengths, intensities and azimuths (Bertrand et al., 2015; H
95 but recent interest has developed towards using multi-scale data to evaluate the scalability of topological fracture network characteristics (e.g., Loza Espejel et al., 2020; Dichiarante et al., 2020) as the topological characteristics are scale-independent by definition. The topological characteristics have direct implications on the connectivity and the fluid flow properties of the fracture network (Sanderson and Nixon, 2015, 2018) and consequently, to the DFN-modelling process (Libby et al., 2019).
100 Although topological properties should be by definition scale-independent, recent studies (e.g., Ovaskainen, 2020; Nixon et al., 2012) have shown that the e. g., the inherent differences in source rasters used in lineament or fracture interpretation (e.g., digital elevation model for lineaments vs. RGB-image for fractures) could influence the resulting topological network parameters.

1.2 Agenda of our study

By conducting a multi-scale lineament and fracture network investigation at the mesoscopically isotropic Rapakivi granites at
105 Åland Islands ~~we gain: i) A robust multi-scale dataset that adds~~, Finland, we provide a significant addition in terms of data and modelling to the currently limited pool of multi-scale studies conducted in crystalline rocks, ~~and more specifically, bridges the~~. This dataset, and subsequent multi-scale analysis of it, will answer research questions on whether the fractures and lineaments follow common trends (e.g., a power-law) in their lengths across multiple scales. Furthermore, it is of specific interest if we can fill the gap of brittle structures with intermediate lengths ~~(100 and 500–100-500 m)~~. This specific gap in the fracture
110 lengths has been recognised ~~recognised to be missing~~ in the Olkiluoto dataset and our new results consequently lead to and reduced uncertainties in making generalised interpolations of fracture and lineament lengths in the corresponding scale range.
ii) Further insight fracture dataset. The geologic setting of the Åland Islands provides unique benefits for a multi-scale study, as it lacks ductile features. The absence of ductile features e.g., enhances the recognition of the effects of glacial flow on the fracture and lineament characteristics, such as intensity, as our results enable the cross-validation of lineament characteristics
115 with those of fractures without the interference from ductile control. Further insight is also gained regarding comparisons of topological network characteristics from fracture networks extracted from multiple scales which are not commonly included in multi-scale studies although they are crucial for realistic Discrete Fracture Network -modelling. ~~Our results for e.g., the topological Connections per Branch parameter show a trend of increasing values as the scale of observation decreases from the outerop fractures to lineaments. (Maillot et al., 2016; Libby et al., 2019).~~

120 As such, this work indicates that multi-scale, multi-method, scalability studies of the fracture networks increase the reliability of the fracture network models as compared to ones conducted in a fixed scale. Our multi-scale results enable the cross-validation of lineaments with fractures and e.g., highlight a possibility of N-S-oriented lineaments to be remains of glacial flow rather than bedrock structures. Furthermore, the presented methods and results will be useful for application such as geothermal

and bedrock construction projects, and they further provide a useful framework for further field analogue and characterisation studies of local brittle structures.

We conducted mapping of brittle bedrock structures in three different scales of observation, outcrop, semi-regional and regional scale and using a combination of comparable remote-sensing methods. As the outcrop scale data (scale of observation circa (1:10)) we used fracture trace data published in Ovaskainen et al. (2022) which contains fractures with lengths from centimeters to roughly 30 m. The available trace data was originally digitised from orthomosaics spanning an area of circa 20700 m². For the semi-regional scale (ca. 20–9000 m) of observations we digitised topographical lineaments from an area of ca. 231 km² using Light Detection And Ranging (LiDAR; National Land Survey of Finland, 2010) point data, which we further processed into a Digital Elevation Model (DEM) and visualised with multidirectional hillshading allowing optimal recognition of topographic lineaments with any azimuth (Palmu et al., 2015). The DEM was resampled to a cell size of 5 m and 150 m which correspond to the semi-regional map scale of (1:20 000 and the regional map scale of) and regional (1:200 000; respectively. The regional map scale dataset covers an area of ca. 1097 km². In the regional 1:200 000 scale, we supplemented the LiDAR-based lineament interpretation with low-altitude airborne geophysical magnetic and electromagnetic raster data.

), and using a combination of comparable remote-sensing methods to digitize fractures and interpret lineaments. We characterised the fracture network properties of all three scales using geometric and topological characteristics, including intensity (*Fracture Intensity P21* and *Dimensionless Intensity P22/B22*; Sanderson and Nixon 2015), azimuth, length distributions (e.g., power-law fit attributes including exponent; Clauset et al. 2009) and connectivity (e.g., *Connections per Trace/Branch*); Sanderson and Nixon 2015).

The results of this paper highlight that scalability studies using multiple methods and data from multiple scales of the fracture networks increase the reliability of the fracture network models as compared to ones conducted in a fixed scale. For example, we highlight a possibility of N-S oriented lineaments to be remains of glacial flow rather than bedrock structures. Also, our results for the topological *Connections per Branch* parameter (Sanderson and Nixon, 2015) show a trend of increasing values as the scale of observation decreases from the outcrop fractures to lineaments. The presented methods and results will be useful in geothermal, bedrock construction and nuclear waste disposal projects, and they further provide a useful framework for further field analogue and characterisation studies of local brittle structures. We used the characterisation results to qualitatively estimate the geological significance of the lineaments (and fractures; i.e., the likelihood that a digitised trace represents an underlying bedrock structure) of different scales and potential factors affecting the characterisation results such as the effect of glacial erosion. Consequently, we compared the determined characteristics between all scales of observation and specifically focused on the investigation of the potential fractal characteristics of their length distributions by determining the possibility of modelling the trace lengths from different scales with power-law fits.

2 Geological Setting

The main part bedrock of the main island of Åland Islands bedrock is comprised of the 1.58 Ga Åland Batholith (Laitakari et al., 1996; Rämö and Haapala, 2005; Kosunen, 1999), which is a crystalline rapakivi granite consisting mainly of Wiborgite and

Pyterlite (Geological Survey of Finland, 2017) ~~and with an overall homogeneous character in~~. In comparison to other complex, polydeformed, crystalline bedrock in southwestern Finland the rapakivi batholith is overall homogeneous in character. The emplacement of the rapakivi batholiths has been generally attributed to crustal extension (Korja and Heikkinen, 1995; Nironen, 1997), associated with an upward bulging of the mantle (Haapala and Rämö, 1992; Luosto et al., 1990). The mesoscopic texture of the rocks is isotropic (unfoliated) as these rocks were not subjected to significant tectonic ductile events associated with major orogenies. Some authors have associated the emplacement of rapakivi granites with pre-existing fault and shear zones (Karell et al., 2014; Kosunen, 1999) within a strike-slip regime (Vigneresse, 2005). The largest deformation zone within the vicinity of the Åland Batholith is the South Finland Shear Zone (Torvela and Annersten, 2005; Väisänen and Skyttä, 2007), which is a 200 km long E-W to NW-SE trending zone that experienced localised ductile deformation at the end of the Svecofennian orogeny between 1.85-1.79 Ga (Torvela et al., 2008). The shear zone ends at the boundary of the batholith, at least at the current erosional level (Torvela et al., 2008).

The fracture traces that represent the outcrop scale data within this study, are from the northern shoreline of Getaberget (Figure 1), where recent contributions have revealed that the Åland Batholith was subjected to brittle faulting and generation of associated fracture systems (Ovaskainen et al., 2022; Skyttä et al., 2022). The observed fractures comprise joints, extension fractures, veins and faults, which display a range of lengths from a few *cm* to 200 *m*. Outside larger fault zones, joints are arranged in three mutually orthogonal sets with roughly N-S and E-W sub-vertical and sub-horizontal orientation. Smaller faults are oriented mostly roughly in E-W and N-S trends but with variation. The E-W faults have both dextral and sinistral kinematics and are parallel to subparallel with the E-W joints, ~~but are further~~. The sinistral E-W faults are associated with kinematically coupled NE-SW extension fractures in their damage zones, whereas the N-S faults have limited damage zones (Skyttä et al., 2022).

The topography and quaternary deposits on the Åland ~~islands~~ Islands are shaped by several glaciation cycles during the Pleistocene. Glacial striations (Figure 1) and distinct glacial landforms such as flutings, typically visible in digital elevation models (~~E.g., Ojala and Sarala, 2017~~) (e.g., Ojala and Sarala, 2017), indicate that the glacier moved in approximately N-S directions during the latest glacial periods. Besides the smooth abrasion-related glacial erosion (see above) the fracture systems within the bedrock contributed towards glacial quarrying, which was particularly intense within individual larger faults (Skyttä et al., 2022).

3 Data & ~~Methods~~ methods

We identify the different scales of observation used for fracture and lineament interpretation by the representative factor i.e., the ratio between a distance on a "map" and the distance on the ground (Goodchild, 2011). ~~E.g.~~ As an example, 1:10 states that 1 meter on the "map" represents 10 meters in nature. However, the usage of the representative factor for representing the scale of digital data displayed on a computer screen is not well defined due to e.g., differences in software and display hardware (Goodchild, 2011). To better specify the scale of observation the use of areal extent and resolution of data are preferred (Goodchild, 2011, 2001) and we display these characteristics in Table 1 with resolution given as the Cell Size of the

Table 1. Definitions of scales of observation used in this study. The name of each scale comes from the Representative Factor that roughly represents the resolution of the raster used as the base map. The resolution of each named scale is given as the Cell Size of the raster. Areal extent is given as the Total Target Trea of the target areas used in the digitization of fractures or interpretation of lineaments.

Representative Factor / Name	Cell Size [m]	Total Target Area [m^2]
1:10	0.0055	20,708
1:20 000	5.0000	230,726,255
1:200 000	150.0000	1,096,918,465

190 raster and areal extent given as the Total Target Area. The used representative factors should only be considered a convenient naming schema as the resolution better defines the scale of observation. Generation of traces at all the involved scales is conducted remotely from aerial datasets, which allows comparisons between the well-represented sub-vertical features, while the sub-horizontal ones are underrepresented and hence not further discussed in this paper.

3.1 Data

195 Brittle bedrock discontinuities can be classified based on several characteristics including fracture filling, kinematics and geometry, resulting in a number of terms that can be used to refer to the different types (e.g., joint, vein, fault and fracture; Odling et al., 1999). We use the most general term fracture when referring to brittle discontinuities in general, as we do not discriminate between different types in the analysis. Categorisation of the outcrop fractures digitised from orthomosaics could be done in the field but to gather representative data on circa 40000 fractures would require significant resource and time-
200 investment. In addition, the results would be difficult to integrate with the remotely digitised data as the scale of observation would likely be different. Furthermore, field verification of lineaments is much more difficult due to quaternary cover and preferential erosion of the depressions. We consequently attempt to analyse the data without specific prior knowledge of the types of features the fractures and lineaments represent. We refer to the networks of both fractures and lineaments as fracture networks and use it as a general term for the collections of fracture or lineament traces.

205 We used existing fracture trace data published by (Ovaskainen et al., 2022) from the northern shore of Åland Islands as the outcrop scale 1:10 dataset (Figure 2). The ~~fracture data was collected from 2D raster orthophotos from within~~ data contain fractures with lengths from centimeters to roughly 30 m. The available trace data was originally digitised from orthomosaics spanning an area of circa 20700 m^2 using 13 circular two-dimensional target areas along the E-W trending Getaberget shoreline. The circle diameters ranged from 20 to 50 meters and the number of digitised traces within the circles varied from 358 to
210 7319. The dataset requires no modifications for the purposes of this study. However, rather than investigating each target area individually we merge the trace data ($n=42499$) into a single dataset of traces that are cropped specifically to the associated target areas resulting in a trace count of 41544. There are significant variations in fracture network properties between the target areas but without apparent spatial trends that could be used to correlate the characteristics with their location (Ovaskainen

et al., 2022). Therefore, the merging of the data produces an aggregated dataset of the fracture characteristics, representative
215 for the entire Getaberget shoreline study area.

Lineaments in this paper are defined as sub-linear lines on the surface of the Earth (See e.g., Tyrén, 2011; Nur, 1982) which
are visible in one or more datasets such as in a digital elevation model or in a geophysical raster. All lineaments digitised for
this paper are interpreted remotely by three operators working collaboratively and cross-verification of interpretations between
operators was done to try to minimize subjective bias (See e.g., Andrews et al., 2019; Bond et al., 2007, for further discussion
220 on subjective biases). The lineaments have not been geologically verified in the field. We used the publicly available airborne
LiDAR point data published by the National Land Survey of Finland (2010) to create a DEM for the purposes of lineament
interpretation in the 1:200 000 and 1:20 000 scales. The used point data has a point cloud density of 0.5 *points/m²* and
the mean altitude error is 0.3 *m*. Specifically, a cell size of 150 *m* is used for the 1:200 000 scale and 5 *m* is used for the
1:20 000 scale interpretation. We visualize the DEM using a multi-directional oblique hillshade on top of the DEM raster to
225 highlight the topographical valleys and slopes (Palmu et al., 2015). The hillshade has a z-factor of 1, the used altitude of light
is 45 degrees and illumination azimuths are 225, 270, 315 and 360 in degrees. We overlaid the transparent (alpha value 0.3)
white-to-black hillshade upon the blue-to-red DEM raster to allow the optimal recognition of linear structures with variable
trends. Furthermore, we calculated the color-scales of both rasters from the current extent of the canvas i.e., the coloring
is recalculated dynamically as the interpreter pans or zooms the map. [In the 1:20 000 scale, we interpreted topographical](#)
230 [lineaments from target areas of ca. 231 km².](#)

In addition to the LiDAR DEM topographical raster, we interpreted geophysical lineaments in the 1:200 000 scale using
regional low-altitude magnetic and electromagnetic aerogeophysical rasters (Hautaniemi et al., 2005). Flight-altitude and flight
line spacing during the acquisition of magnetic data were 30 *m* and 200 *m*, respectively, and the acquired raw data ~~was~~
further processed into various rasters with a 50 *m* cell size. We resampled all [geophysical](#) rasters we used for the 1:200 ~~00~~
235 ~~000~~ scale interpretation to a cell size of 150 *m* to match the resolution of the ~~also~~ resampled 1:200 000 scale LiDAR DEM. [The](#)
[target area for the 1:200 000 lineament interpretation covers an area of ca. 1097 km².](#)

We used three magnetic rasters: i) total field DGRF-65 greyscale, ii) sharp-filtered total field DGRF-65 greyscale and iii)
tilt derivative (Verduzco et al., 2004). Based on these three magnetic raster maps, we interpret lineaments along the recog-
nised linear magnetic maxima and minima, which ideally correlate with deformation zones characterised by metamorphically
240 generated magnetite or pyrrhotite, or fluid-induced alteration and leeching, respectively (See Paananen and Posiva Oy, 2013;
Middleton et al., 2015, and references within both).

We used one electromagnetic raster from the same national surveying program, a 3 *kHz* quadrature component grayscale
map, which we used to interpret electromagnetic lineaments. Lineaments from this map are interpreted along the local minima
which correspond to either i) electrically conductive brittle damage zones (with water and/or conductive minerals) or ii) linear
245 topographic depressions caused by the preferential erosion of brittle damage zones, and containing conductive soils with clay
minerals and peat alongside rainwater (See Paananen and Posiva Oy, 2013; Middleton et al., 2015, and references within both).

After interpretation of lineaments from each source (the LiDAR DEM, the magnetic maps and the electromagnetic map) we
integrated the lineaments into a single dataset where lineaments interpreted from different sources were merged based on their

superposition [following \(Engström et al., 2023\)](#). Overlapping lineaments were merged along the overlapping parts while the deviating segments such as splays were preserved. This integrated lineament dataset is the representative dataset used for the 1:200 000 scale in all analyses. We use QGIS 3.14 (QGIS Development Team 2020) and ARCMAP 10.6.1 to digitize the lineaments as georeferenced polylines. Similar to Ovaskainen et al. (2022), we used the snapping functionality present in both software packages in order to honor the true abutment relationship between the traces, and consequently, document realistic topological relationships of the network (Nyberg et al., 2018). To verify the topological consistency of the lineaments the traces are validated with a Python package, FRACTOPO, which provides a validation utility to find e.g., V-nodes and overlapping lineament sections (Ovaskainen, 2022). The 1:200 000 scale lineaments were digitised by three persons, including the main author, while the 1:20 000 scale lineaments were digitised solely by the main author. The interpretations were done in circular target areas to remove the uncertainty related to the shape of the interpretation area (~~Mauldon et al., 2001; ?; Ovaskainen et al., 2022~~) ([Mauldon et al., 2001; Rohrbaugh et al., 2002; Ovaskainen et al., 2022](#)).

260 3.2 Lineament and ~~Fracture Network~~ [fracture network](#) characterisation and ~~Comparison~~ [comparison](#)

The interpreted lineament dataset is comparable to the used fracture trace data because it has been digitised and validated similarly and is therefore analysable using the same tool used by Ovaskainen et al. (2022), FRACTOPO. All functionality required for the multi-scale analysis of lineament and fracture trace data of this paper are implemented in the main FRACTOPO software repository (Ovaskainen, 2022). ~~However, to~~ [The FRACTOPO software itself is based on a number of open-source Python packages which enable the specialized geospatial analysis and plotting within this paper. Most prominently MATPLOTLIB \(Hunter, 2007\), GEOPANDAS \(Jordahl et al., 2022\), NUMPY \(Harris et al., 2020\), SHAPELY \(Gillies et al., 2022\) and POWERLAW \(Alstott et al., 2014\) were used. To allow easier reproducibility of the more specific analysis, the results of this study and the explicit FRACTOPO-based workflow, analyses and figures, including most figures and tables, the methods and associated code](#) are presented in a separate open repository (~~?~~) [\(Ovaskainen, 2023\)](#).

270 For each scale of observation, 1:10, 1:20 000 and 1:200 000, we present a set of network characterisation results. *Fracture Intensity P21* is calculated from the total trace length occurring within an area. The derivatives of it, *Dimensionless Intensity P21-P22* and *B22*, are calculated by multiplying the value of *Fracture Intensity P21* by the characteristic trace or branch length, respectively (Sanderson and Nixon, 2015). As these two [derivative](#) parameters have no units, i.e., they are dimensionless, they are well suited for intensity comparisons between scales. We used equal-area length weighted rose plots to visualize the azimuth distributions (Ovaskainen et al., 2022; Sanderson and Peacock, 2020) and further subdivided them into sets that occur in all or in at least two of the scales. To analyse network topology and to present topological network characteristics, we determined the topological branches and nodes (Manzocchi, 2002; Mäkel, 2007; Sanderson and Nixon, 2015; Nyberg et al., 2018) of the network using FRACTOPO. Nodes represent interactions between traces or trace abutments in isolation. Specifically, Y-nodes represent trace abutments to each other, X-nodes represent traces cutting through each other and I-nodes represent trace abutments in isolation (Manzocchi, 2002; Mäkel, 2007; Sanderson and Nixon, 2015). The node types can be generalised to be connected or unconnected where the X- and Y-nodes are connected (C) and I-nodes unconnected (I). Using this generalisation the branches, which are the trace segments between the nodes, can be given types of C-C, C-I and I-I where the type is

determined by the end nodes of each segment (Sanderson and Nixon, 2015). The branches and nodes were analysed for scale-independent estimates of network connectivity by plotting the relative proportions of different types of nodes and branches into ternary plots (Manzocchi, 2002; Sanderson and Nixon, 2015) and by calculating parameters *Connections per Trace* and *Connections per Branch* (Sanderson and Nixon, 2015).

Regarding the fracture length, we determined power-law, lognormal and exponential distribution fits to the trace length data using FRACTOPO, which in turn uses the POWERLAW-package (Alstott et al., 2014) for Maximum Likelihood Estimation of the fits following Clauset et al. (2009). Following Bonnet et al. (2001) and Clauset et al. (2009), the power-law modelled distribution of lengths $n(l)$ is represented as a function of the power-law exponent a and a constant A :

$$n(l) = A \times l^a$$

Along with the length distribution fits, POWERLAW-package automatically determines the cut-off value for the length data below which lengths do not seemingly fit the same power-law exponent. The cut-off at the tail end of the distribution is attributed to the fixed scale of observation (See e.g., Bonnet et al., 2001; Pickering et al., 1995, for discussion on truncation and censoring sampling issues. (See e.g., Bonnet et al., 2001; Pickering et al., 1995, for discussion on truncation and censoring sampling issues for fractures.)

. For fracture trace data, the need for a truncation cut-off is attributed to the insufficient ability to digitize the smallest fractures visible in the images due to insufficient resolution (Pickering et al., 1995; Bonnet et al., 2001). To visualize the length distributions, we plotted the lengths on the x-axis and complementary cumulative number of the length distribution on the y-axis. Both axes, x and y, are logarithmically scaled. Cumulative number in this study means a running integer number starting from 1 (the shortest fracture), then counting upwards and ending at the longest. The prefix, complementary, means that the cumulative number is then inversed so that the longest fracture has the smallest value. If the data ~~is~~ are power-law distributed the scatter data on the plot will follow a sub-linear trend with an expected deviation from the trend at some cut-off value. We tested the goodness-of-fit of a power-law trend by comparing the fit to the fit of a lognormal distribution. We display the loglikelihood ratio R and ratio significance p values of the likelihood comparisons (Alstott et al., 2014). The loglikelihood ratio R is positive when the power-law trend is more likely and negative when the lognormal trend is more likely. High statistical significance of the comparison is described by low p values, where a p value of less than 0.1 is considered statistically very significant (Clauset et al., 2009). Because the power-law fit typically requires a cut-off when comparing the different distributions, all comparisons are made to the cut-off truncated data rather than the full length data to enable the comparison of the fits as recommended by Clauset et al. (2009). Furthermore, we analysed the lengths of the network branches and use the same determination method as used for the traces to fit different potential distributions to the branch length data. The lengths of topological branches are less subject to subjective bias related to the interpreter (Sanderson and Nixon, 2015; Loza Espejel et al., 2020; Sanderson and Nixon, 2018). Consequently, the results of length distribution analysis of branches are potentially better suited for comparisons between scales of observation in this study or in comparisons to other studies of branch length distributions (Sanderson and Nixon, 2015; Loza Espejel et al., 2020; Sanderson and Nixon, 2018; Lahiri, 2021). In the appendix, we also display lognormal and exponential fits to the full length data for both traces and branches along with their associated statistical characteristics

315 [\(Figure B1 and Table B1, respectively\)](#). [This analysis is kept to the appendix due to the inability to compare the fits statistically to fits with the applied cut-offs.](#)

As we had trace length data of structures from multiple scales of observation, we could investigate the potential fractal nature of the lengths by plotting all trace length data onto a single plot and fitting a power-law function to all data or to data truncated by individual cut-offs (Sornette et al., 1990; Davy, 1993; Bonnet et al., 2001; Davy et al., 2010). We conducted this analysis as
320 there is physical rationale for brittle structure trace lengths to follow power-law distributions across different scales of observation (Bonnet et al., 2001). To normalize the scale of observation we divided the Complementary Cumulative Numbers (CCM) of each scale dataset by the total area of the target area to get the Area-Normalised Complementary Cumulative Numbers (AN-CCM) following Bonnet et al. (2001). Rather than using all trace length data, we used the aforementioned cut-offs ~~determined for~~, [determined from](#) individual length distributions, to remove the tails (lowest trace lengths) from the distributions before
325 fitting the multi-scale trend. To fit the trend we could not use the POWERLAW-package as it does not support automatic fitting to multiple, separate, distributions simultaneously. Rather, we used a least squares polynomial fit function, POLYFIT from the NUMPY Python package (Harris et al., 2020), and assessed the multi-scale goodness-of-fit with Mean Squared Logarithmic Error (MSLE). The fit is done to the logarithm of the length and ~~CCM~~[ANCCM](#) data as implemented in FRACTOPO (Ovaskainen, 2022). Using multi-scale azimuth sets determined from a visual inspection of rose plots of the scales of observation, we could
330 further investigate the possibility of fitting multi-scale power-law trends to multi-scale length data that is categorised by azimuth set. The approach has the potential to reveal differences between length distributions of fractures and lineaments in different azimuths (~~E.g., Skyttä et al., 2021; Ceccato et al., 2022~~)[\(e.g., Skyttä et al., 2021; Ceccato et al., 2022\)](#). Of particular interest is whether the effect of glacial erosion has caused differences in the length distributions of features in different azimuths.

4 Results

335 4.1 Lineament ~~Interpretation~~[interpretation](#)

Lineament interpretation and subsequent integration of topographic and geophysical lineaments in the Åland Islands resulted in 201 integrated lineaments in the 1:200 000 scale. The number of lineaments from each different interpretation source in the 1:200 000 scale is displayed in Table 2. The addition of geophysical rasters to complement LiDAR DEM -based interpretation resulted in a significant number of additional lineaments. Specifically, a significant number of geophysical lineaments with a
340 NW-SE trending azimuth were added (Figure 3). The effect of glacial erosion, in the N-S direction, is apparent in the LiDAR raster but is not visible in any of the geophysical rasters. Practically no N-S oriented lineaments were either interpreted from the geophysical rasters, whereas in the LiDAR raster a significant number of such lineaments were digitised in the 1:200 000 scale. Lineament digitisation in the scale 1:20 000 was limited to the LiDAR DEM raster as the geophysical rasters lacked the resolution for the more accurate extraction possible in the 1:20 000 scale. The digitisation resulted in 609 lineaments which
345 are visualised in Figure 4A-~~(a)~~[\(a\)](#). The northern target area for 1:20 000 lineament interpretation covers the Getaberget hill area and the surrounding terrain (Figure 1). Because the hill area is distinctly better exposed than the neighbouring terrain, the interpreted lineament density is higher in this ~~better~~[more](#) exposed and elevated area (Figure 4A-~~(a)~~[\(a\)](#)).

Table 2. Counts of digitized fractures and lineaments from each source that intersect their respective target areas.

Raster Source	Count
LiDAR 1:200 000	150
Magnetic 1:200 000	48
Electromagnetic 1:200 000	21
Integrated 1:200 000	201
LiDAR 1:20 000	609
Orthomosaics 1:10	41544

4.2 Multi-scale ~~Network Characterisation~~ network characterisation

Scalar network characteristics of each scale dataset are collected in Table 3. The characterisation consists of geometric and topological parameters which can be used to compare the scales. Of special interest are the dimensionless parameters (*Dimensionless Intensity P22 and B22, Connections per Trace, Connections per Branch and Trace and Branch Power-law Exponents and Branch Power-law Exponents*) as these are especially suited for comparisons between scales of observation (Sanderson and Nixon, 2015; Goodchild, 2001). The scale-dependant *Fracture Intensity P21* has an expected trend of higher intensity with higher scale with the 1:10 scale having the highest value and 1:200 000 the lowest. ~~Same trend is seen with~~ The trend is opposite for Dimensionless Intensity B22 with 1:200 000 scale having the lowest value. *Connections per Trace* and *Connections per Branch* display a trend with values decreasing as the scale increases with the 1:10 scale having the lowest value. While the values of Connections per Branch are quite similar for the 1:20 000 and 1:200 000 scales (1.75 and 1.85, respectively), the difference is amplified by the limited range of values for Connections per Branch (0.0-2.0; Sanderson and Nixon, 2015).

The individual azimuth and length analysis results for each scale are visualised in Figure 5 where trace azimuths are represented with equal-area length-weighted rose plots (Sanderson and Peacock, 2020) and trace and branch lengths are modelled with power-law, lognormal and exponential fits. Based on the displayed rose plots (Figure 5A)(a), three distinct azimuth sets occur in all scale datasets (Table 4). The sets occur with different intensities in different scales, which is recorded in Table 4 with a numbering: 1 equals the most abundant set and 3 the least abundant. Relative abundance is based on the displayed percentages of total trace length of each set in Figure 5A-(a). The relative abundance of the sets differs greatly between the scales and when the set is labeled as the least abundant (3) the occurrence of it in the scale is vague. ~~E.g.~~ For example, the N-S set is barely visible in the 1:10 scale rose plot (Figure 5A)(a) with only a minor local maximum detectable at around 175 degrees. Similarly, the WNW-ESE set is barely detectable in the 1:~~200 00~~ 20 000 scale rose plot without any detectable local maximum.

The exponents of the fitted power-law trends for trace lengths vary drastically when comparing fractures and lineament scales: The 1:10 and 1:20 000 scale fracture traces have fitted *Trace Power-law Exponents* of -2.095 and -2.259, respectively, whereas the 1:200 000 traces have an exponent of -1.14 (Figure 5B)-(b). However, 1:10 and 1:200 000 scale branch lengths have relatively similar exponents of -3.37 and -2.96, respectively, whereas the 1:20 000 scale branch lengths have an exponent of -2.47. Further characterisation of the trace length distributions is displayed in Table 5 where the power-law fit is compared

Table 3. Basic network descriptions of all scales of observation with units displayed when applicable. EM = Electromagnetic 3kHz quadrature. Mag = Magnetic rasters. ^a Based on node counting (Sanderson and Nixon, 2015). ^b The absolute i.e. the "real" count of trace geometries.

Name	1:10	1:20 000	1:200 000
Data Source(s)	Orthomosaics	LiDAR	LiDAR+EM+Mag
Number of Traces ^a	40654	539	157
Number of Branches ^a	93125	1965	1151
Number of Traces (Real) ^b	41618	621	206
Area [m^2]	20707.55	2.31e+08	1.10e+09
Trace Max Length [m]	34.86	13223.49	32635.24
Trace Mean Length [m]	1.0	1290.21	6698.69
Branch Max Length [m]	9.57	2789.28	8501.36
Branch Mean Length [m]	0.45	407.75	1198.38
Fracture Intensity P21 [$\frac{m}{m^2}$]	2.01	3.47e-03	1.26e-03
Dimensionless Intensity P22	2.01	4.48	8.43
Dimensionless Intensity B22	0.9	1.42	1.51
Trace Power-law Exponent	-2.09	-2.26	-1.14
Branch Power-law Exponent	-3.37	-2.47	-2.96
X	9771 (10 %)	419 (27 %)	423 (57 %)
Y	32929 (36 %)	588 (39 %)	148 (20 %)
I	48380 (53 %)	490 (32 %)	167 (22 %)
C - C	52586 (57 %)	1460 (77 %)	946 (85 %)
C - I	31343 (33 %)	391 (20 %)	160 (14 %)
I - I	8311 (9 %)	44 (2 %)	2 (0 %)
Connections per Trace	2.1	3.74	7.25
Connections per Branch	1.48	1.75	1.85

Table 4. Visually determined multi-scale trace azimuth sets along with relative abundance in each scale where 1 equals the most abundant of the sets and 3 the least abundant.

Azimuth Set Label and Range (degrees)	Relative Abundance		
	1:10	1:20 000	1:200 000
N-S (155-25)	3	1	2
NE-SW (25-75)	2	2	3
WNW-ESE (85-135)	1	3	1

to the lognormal fit (See rows with "All".) and cut-off proportions are displayed. Comparisons to exponential fits are not displayed as even visual inspection shows that it does not model the ~~lengths-truncated length distributions~~ well (Figure 5B).

375 (b) For all scales the lognormal fit is more probable according to the R values. However, based on the p values the lognormal fit is significantly more probable than the power-law fit for the 1:200 000 scale (p value less than 0.1) while power-law remains a possible alternative for both the 1:10 and 1:20 000 scale datasets. The cut-off proportion (i.e., amount of data removed by the application of the cut-off) for the 1:10 scale is very high with 97.82 % of data being cut off. The proportion is similarly high for the 1:20 000 traces with a value of 88.08 % and significantly lower for the 1:200 000 traces with a value of 35.92 %.

380 Table 5 also contains fit results to azimuth set-wise categorised trace lengths for each scale. For all scales the set-wise fits do not drastically differ from the fits to all traces in terms of power-law exponents. The power-law fits for 1:10 scale azimuth set lengths remain candidate fits expect for the WNW-ESE-set where the lognormal fit is significantly more probable with a p -value of ~~1.45e-05~~ 1.45e-05. For both the 1:20 000 and 1:200 000 scales all azimuth set-wise fits have p values of over 0.1 indicating that the power-law fit cannot be ruled out as a candidate model for the trace lengths of each set. However, for

385 these comparisons, it should be kept in mind that the azimuth sets occur with very different intensities across the scales of observation (Table 4). Furthermore, as the traces are subdivided into sets, the sample count within each set decreases which lowers the reliability of the results especially for the ~~lineament-datasets-which-have-lower-sample-counts-1:200 000 scale~~ lineaments (Table 4). Regardless of these uncertainties, a common trend is ~~also~~-noticeable where the WNW-ESE set traces have the ~~lowest-highest~~ power-law exponents in all scales.

390 The multi-scale power-law fit to all traces is visualised in Figure 6A-(a) along with fits to trace lengths categorised by the previously determined azimuth sets in Figure 6B-C-(b)-(c). Based on visual inspection of the plot with all trace data (Figure 6A(a)) the 1:10 scale fractures and the 1:200 000 scale lineaments seem to follow a common power-law trend while the 1:20 000 lineaments deviate from it. However, the tail cut-offs majorly affect the distributions and the resulting fits. Also, the largest length traces (head) within each scale deviate from the common trend. When comparing the azimuth set ~~categorised~~

395 ~~-categorised~~ multi-scale length distributions (Figure 6B-C(b)-(c)), the WNW-ESE set is somewhat anomalous compared to the rest. Due to having lower cut-offs, determined from individual distributions (Table 5), a higher proportion of length data ~~is-are~~ used with the WNW-ESE data which increases the Mean Squared Logarithmic Error (MSLE) but, based on visual inspection, a common trend seems more likely for 1:10 scale fractures with intermediate lengths (length data around the cut-off value of 1.75 m) rather than the higher length fractures at the head of the distribution (Figure 6D). The exponent values of the power-

400 law trends are quite similar across the different arrangements (Figure 6). The NE-SW set has the highest exponent of -1.12, closely followed by the exponent of all traces (Figure 6A-D)(a)-(d)) and the exponent of the N-S set trace lengths (-1.19). The WNW-ESE trending traces have the lowest exponent of -1.30 which slightly deviates from the other exponents (Figure 6D) and is in contrast to the set having the highest exponents when analysing the length distributions individually (Table 5). The trend of the individual 1:10 fracture and 1:20 000 lineament distributions in Figures 6A and 6B-(a) and 6(b) seem to indicate

405 a power-law exponent lower than the trends of the lineaments as is also evidenced by fits to the individual distributions where the exponent is -2.095 for the 1:10 scale fractures and -2.26 for the 1:20 000 scale lineaments (Figure 5).

Table 5. Parameters of length distribution fits for traces and branches for all scales along with set-wise fits of traces for all scales. PL = power-law, LN = lognormal. R-value is the loglikelihood ratio where a positive value indicates that the power-law fit is more likely and a negative value that the lognormal fit is more likely. The p-value represents the significance of the likelihood where low values (<0.1) correspond to high statistical significance.

Name	n	PL Exp.	PL Cut-Off [m]	Cut-Off %	LN Sigma	LN Mu	PL vs. LN R	PL vs. LN p
1:10 Traces All	41618	-2.09	5.87	97.82	1.5	-2.07	-1.48	0.14
1:10 Branches All	94014	-3.37	2.77	99.11	0.95	-1.46	-1.41	0.16
1:10 Traces N-S (155-25)	9266	-1.81	3.53	94.53	2.42	-8.28	-0.61	0.54
1:10 Traces NE-SW (25-75)	11220	-2.34	5.13	97.55	1.48	-2.68	-0.61	0.54
1:10 Traces WNW-ESE (85-135)	16138	-1.56	1.75	82.95	1.45	-1.58	-4.34	1.45e-05
1:20 000 Traces All	621	-2.26	3544.37	88.08	0.86	7.27	-0.96	0.34
1:20 000 Branches All	2037	-2.47	683.96	83.26	0.67	6.09	-2.59	9.71e-03
1:20 000 Traces N-S (155-25)	199	-2.33	3451.3	79.9	0.73	7.64	-0.86	0.39
1:20 000 Traces NE-SW (25-75)	180	-1.56	1483.87	66.67	1.88	2.97	-0.47	0.64
1:20 000 Traces WNW-ESE (85-135)	142	-1.35	1046.52	66.2	1.54	5.04	-0.67	0.5
1:200 000 Traces All	206	-1.14	4178.75	35.92	1.35	7.7	-1.8	0.07
1:200 000 Branches All	1195	-2.96	2382.63	87.11	0.57	7.39	-1.65	0.1
1:200 000 Traces N-S (155-25)	72	-1.22	3854.44	34.72	1.44	7.1	-0.9	0.37
1:200 000 Traces NE-SW (25-75)	56	-1.2	5621.01	50.0	1.12	8.46	-1.03	0.3
1:200 000 Traces WNW-ESE (85-135)	63	-1.14	4692.67	31.75	1.55	7.19	-0.84	0.4

The proportions of topological node types (X, Y and I) and branch types (C-C, C-I, I-I) from Table 3 are visualised in Figure 7 with ternary plots (Manzocchi, 2002; Mäkel, 2007; Sanderson and Nixon, 2015). From both the node ternary plot (Figure 7A)(a) and branch ternary plot (Figure 7B)(b) a trend can be observed where the apparent connectivity of the network increases as the scale of observation becomes smaller i.e., the resolution used for interpretation is poorer. Specifically, both the proportion of X-nodes and C-C branches increases as the scale becomes smaller and is the highest for the scale 1:200 000 network. The trend is also observable from the values of *Connections per Branch* and *Connections per Trace* (Table 3).

5 Discussion

5.1 Gap ~~Between Outcrop~~ between outcrop and Lineament Data lineament data

Our use of the 1:20 000 scale of observation in digitising topographical lineaments has the potential to reduce the uncertainty related to the brittle structures of intermediate length (100-500 m) which are commonly missing from studies based on outcrop

digitisation and lineament interpretations (Marrett et al., 1999; Strijker et al., 2012; Loza Espejel et al., 2020; Fox et al., 2012). This missing length data was found to be a problem during the creation of a DFN-model for the Olkiluoto spent fuel disposal facility where fracture or lineament data could not be empirically collected with these lengths (Fox et al., 2012).

420 ~~However, the~~ The DFN-model required the creation of fractures of all sizes using a common scaling law (or laws), including ones in this missing length range. Without empirically detected fractures within this size range, an uncertainty remained on the validity of generating fractures of these sizes. The generation was done using a length distribution model derived from outcrop fracture data or alternatively from lineament data (or both). All three options required the extrapolation or interpolation into the unknown intermediate length range (Fox et al., 2012). In our study, although we produce lineament length data in the 100-500 *m*

425 length range (Figure 5B)(b)), the optimisation of the power-law fit to all of the 1:20 000 scale length data resulted in a cut-off of 3544 *m* (Figure 5; Table 5). This cut-off can be estimated to be the lowest length lineaments which we can consistently interpret without truncation effects caused by resolution of the LiDAR DEM ~~;~~ in this scale, when assuming that the lineament trace lengths follow a power-law. ~~Consequently, a significant~~ In the statistical comparison between the lognormal and power-law fits to the 1:20 000 length data, the lognormal is favoured (Table 5) but the power-law is not ruled out due to the *p* value being

430 above 0.1. If this assumption is challenged and lineaments are assumed to instead follow scale-dependent distributions, such as the lognormal, the problem of missing data in the 100-500 *m* length range is solved. However, all possibility to interpolate length distributions to any other gaps is ruled out as the interpolation depends on the lengths following a scale-independent distribution, such as the power-law. Consequently, uncertainty remains around the length data gap ~~still occurs~~

435 interpretation of lineaments within this length gap by using a larger scale of observation (e.g., 1:10 000). However, in the vast majority of the 1:20 000 area, based on visual observation of the LiDAR DEM (Figures 3 and 4), the landforms would become less sub-linear and more uncertain, with regard to if they reflect the structures of the underlying bedrock. In contrast, where quaternary deposits do not overlay the bedrock, such as at the Getaberget shoreline outcrops, the bedrock features are directly observable from the DEM. These areas are however limited when considering both their shape and areal extent ~~in comparison~~

440 ~~to the low resolution of DEM and are~~ better surveyed with drone photography ~~;~~ as it has a significantly higher resolution than the DEM. An alternative to drone photography is the use of satellite images (e.g. Bertrand et al., 2015). However, they generally have lower resolution than drone images and do not provide any penetration through vegetation which limits their useful extent to the extent of drone imaging. Digitisation of fractures longer than the diameter of the circular target areas used at Getaberget (50 *m*) could be possible but they could not be sampled using circular target areas as the width of the polished

445 part of the outcrops is limited to not much higher than the diameter of 50 *m* (Ovaskainen et al., 2022). Using non-circular, irregularly, shaped target areas would add uncertainty to the orientation distributions we sample from the target area which would, consequently, decrease the significance of the results (Mauldon et al., 2001; Rohrbaugh et al., 2002; Ovaskainen et al., 2022). This limits the use of creating lower resolution drone images for the purpose of creating lower scale interpretations from the same drone imaged areas as we have done with the LiDAR lineament interpretations where we used resampled resolutions

450 of 5 *m* and 150 *m*. We could digitize traces from scales such as 1:20 but the maximum length of fracture traces would still be limited to roughly 50 *m* regardless of the image data used as the source (drone or satellite).

5.2 Factors ~~Affecting Analysis~~affecting analysis

A distinct difference in the data between the three scales, is the significantly higher number of traces within the 1:10 scale compared to either of the lineament trace datasets (Table 3). Previous studies on the representative trace count required for trace length distributions analysis have suggested minimum trace counts of 150 to 300 (Priest, 1993), and below (Bonnet et al., 2001; Zeeb et al., 2013). The 1:200 000 scale lineament trace count of 201 (Table 5) is lower than the upper threshold by (Priest, 1993) but higher than the minimum recommendations of 200 and 110 by Bonnet et al. (2001) and Zeeb et al. (2013), respectively. The study by Ovaskainen et al. (2022) on the Getaberget trace dataset, which we use as the 1:10 scale data, suggested that the sample area (and simultaneously trace count) could be significantly reduced to still result in the same characterisation results for the Getaberget area. But we cannot rule out the possible effect of low lineament trace counts on the analysis of trace lengths for the 1:200 000 scale. The effect of lower count of lineaments might also cause the subjective bias related to the interpreters of the lineaments to have more effect as each individual choice in the lineament interpretation has more weight.

The lineament interpretation in scale 1:20 000 is solely based on the LiDAR DEM whereas interpretation in scale 1:200 000 uses geophysical rasters in addition to the DEM to enhance the detection of bedrock structures. This could cause the interpreted structures to differ between the scales where the structures with high geophysical ~~and~~ but low topographical signals would be more likely detected in the 1:200 000 scale interpretation. This could explain the lack of a detectable WNW-ESE set in the 1:20 000 scale lineaments (Figure 5; Table 4) which is detected in the geophysical rasters (albeit as mostly NW-SE trending lineaments) in the 1:200 000 scale (Figure 3) and corresponds, azimuth-wise, to the major South Finland Shear Zone (SFSZ) that seemingly abuts next to the main Åland island (Torvela et al., 2008). The WNW-ESE set is represented by a single long lineament that cuts through the entire eastern 1:20 000 target area (Figure 3B)-(b)) However, because it cuts the target area from both ends, it is removed from any further analysis due to the boundary weighting methodology implemented in FRACTOPO (Figure 5 by Ovaskainen et al., 2022). The set is otherwise represented only by very few small lineaments (Figure 5A)-(a)) The similar azimuth trend with the SFSZ could indicate that the structures of the Åland rapakivi batholith might inherit a structural trend from the SFSZ which would, consequently, increase the geological significance of the WNW-ESE oriented lineaments. The set is more detectable in the 1:10 scale fracture traces of which some correspond to field surveyed faults (Skyttä et al., 2022; Ovaskainen et al., 2022). Based on these observations, we suspect that the lack of geophysical data in the scale 1:20 000 could result in a lack of structures that have relatively low topographical signals in that scale with only the largest WNW-ESE structures being detectable (Figure 4B)-(b)) Consequently, we recommend the supplementation of the 1:20 000 scale interpretation with high resolution geophysical data as it would increase the certainty of lineament interpretation in that scale. These uncertainties limit the possibility of using the full resolution of the LiDAR DEM to map lineaments with intermediary lengths (100-500 m; Continued discussion from Section 5.1). However, geological differences in the quaternary cover and glacial erosion might make the use of the 1:20 000 scale more successful in other study areas and geological bedrock settings.

The bedrock within the 1:200 000 scale target area lacks precursor fabrics caused by tectonic deformation as the batholith was emplaced after the Svecofennian orogeny (Rämö and Haapala, 2005). Consequently, we do not expect the fracture or

lineament pattern to be controlled by local ductile anisotropies, such as foliations and folds. This simplifies the multi-scale analysis of the fractures and lineaments as investigating the controlling effect of such structures is not required. We do not expect the 1:10 scale fracture lengths to be stratabound as the lithology is homogeneous crystalline rock within the entire 1:200 000 scale target area (Figure 1). However, we cannot have the same expectation for lineaments, especially digitised in the scale 490 1:200 000, as their interpreted lengths can span tens of kilometers (Table 3) and they are therefore comparable in size to the sheet-like bodies of rapakivi granite with estimated thickness of circa 5-10 kilometer (Rämö and Haapala, 2005). The possible partly stratabound nature of lineaments might be noticeable in their length distributions where the lognormal distribution fit to the 1:200 000 scale trace length distribution is better with a p value of less than 0.1 in the comparison of power-law and lognormal fits indicating high statistical significance of the lognormal preference (Table 5; Figure 3).

495 ~~Glacial flow on the Åland Islands has a preferred trend of roughly N-S (Figure 1). Therefore, we~~ We expect that the digitised lineaments which are oriented roughly N-S are partly affected by the glacial landforms e.g., in the form of enhancing their length as discussed in a similar study by Ovaskainen (2020). The N-S oriented lineaments are, based on visual observation of Figures 3A-(a) and 4, quite continuous and the effect of glacial erosion is apparent from the LiDAR raster maps in the form of visible linear quaternary land features such as possible roches moutonnées. ~~Furthermore, the N-S striking lineaments are~~
500 ~~determined to form a distinct azimuth set (Table 4).~~ Inspection of the length distributions of the N-S oriented lineaments using power-law modelling (Table 5) shows that the N-S striking lineaments have the lowest exponents compared to other sets or to all lineaments within both the 1:20 000 and 1:200 000 scales with values of -2.33 and -1.22, respectively. However, the difference is small compared to other sets for the 1:200 000 scale and the sample counts of lengths within each set is low enough to possibly affect the reliability of the results. ~~Overall, the glacial flow is more than likely a controlling factor in the~~
505 ~~N-S striking lineament characteristics, but the impact of this factor cannot be quantified.~~ Some evidence of ~~the a~~ a bedrock-related nature of N-S trending lineaments is present as local fracture azimuth maxima in individual Getaberget target areas and in previously surveyed fault data (Figures 6 and 9 by Ovaskainen et al., 2022). ~~Detailed geophysical studies can verify the existence of bedrock structures represented by lineaments but their type characterisation is only possible with drilling.~~
~~The~~ In contrast, there is a lack of a dominant N-S set of fractures in the aggregated Getaberget trace data (Figure 5A(a);
510 ~~Table 4) further brings into question whether the N-S striking lineaments truly represent bedrock structures.~~ The N-S trend is not visible in the geophysical magnetic or electromagnetic rasters either (Figure 3BC)-(bc)). In conclusion, through our multi-scale cross-validation, the inclusion of the N-S striking lineament characteristics in e.g., ~~discrete fracture network-modelling~~ DFN-modelling should be done with caution and the verification of the existence of N-S striking bedrock structures should be conducted done in further studies. ~~Some evidence for the bedrock-related nature is provided in the existence of a~~ However, the
515 existence of dextral faults trending N-S (Figure 9 by Ovaskainen et al., 2022) provides some concrete evidence of N-S striking bedrock structures.

5.3 Multi-scale Analysisanalysis

Within all subfigures of Figure 6 the length distributions seem to follow the trend of the fitted power-law to some degree, although both the slope and location (below or above the power-law trend) of individual distributions vary. The differences

520 in slope compared to the fitted multi-scale power-law can be explained for the 1:10 and 1:20 000 scales by the individual power-law exponents of circa -2.0 that deviate clearly from the 1:200 000 scale exponents of circa -1.2. The difference in location could indicate problems with the normalisation of the trace length distributions in the multi-scale plot. On closer inspection of the 1:10 length distributions in Figure 6, the trend that has been fitted to the lineament trace lengths could fit the center part (which has lengths below the cut-off) of the 1:10 length distributions. If the cut-off was around 1 m that part
525 would be included in the fitting and the trend would have a better continuation, at least visually. However, the head (highest length traces) of the 1:10 distribution would still not fit the multi-scale power-law, possibly indicating the need of both a tail and head cut-off. The heads of both 1:20 000 and 1:200 000 scale distributions similarly deviate from the trend. The use of an optimisation algorithm that considers all distributions and chooses cut-offs, possibly for both head and tail, to fit a single multi-scale power-law trend rather than determining only the tail end cut-off from the individual length distributions could majorly
530 improve the process while still allowing the full reproducibility of the fitting process. However, the option also remains that the fractures and lineaments have scaling properties that correlate with the scale of observation rather than having common ones (Kruhl, 2013; Davy et al., 2010). The possibility of using normalisation methods other than area-normalisation should also be simultaneously investigated (Bonnet et al., 2001) and the use of the probability density function in place of the complementary cumulative number might have more merit when analysing multi-scale length data (Bour et al., 2002). The occurrence of
535 partly scale-independent azimuth sets (Figure 5; Table 4) within our data might be indicators of hierarchical organisation of the fracture network where the different sets cause differences in the scaling laws between scales of observation, similar to a study by Ceccato et al. (2022) where this option was discussed for their multi-scale fracture and lineament dataset with scale-variant azimuth sets.

The topological characteristics of the multiple scales follow a set trend where the *Connections per Branch* values decrease
540 when the scale increases from 1:200 000 to 1:10 (Figure 7; Table 3). A very similar trend was observed in a multi-scale study done in the Loviisa region, south-east Finland, within a crystalline rapakivi batholith (Ovaskainen, 2020). The trend could be the result of e.g., source raster differences (Nixon et al., 2012) or possible differences in the actual topological characteristic differences between fractures and lineaments of different scales. Another option related to the raster differences is the possible difficulty or subjective bias in identifying two Y-nodes in cases where they are close to each other and instead labeling the
545 intersection as a single X-node (Andrews et al., 2019). In any case, the possibility of this kind of trend should be kept in mind when determining topological characteristics from only a single scale of observation as the value might only represent features within that observation scale. [This has implications for DFN-modelling if topological characteristics are included as input parameters \(Libby et al., 2019\).](#) Based on the high proportion of X-nodes for the 1:200 000 scale lineaments the connectivity of the fracture network would be estimated to be higher than the estimated connectivity from the 1:10 scale fractures, at least
550 based on this strictly two-dimensional analysis. Future studies could include the estimation of the sub-horizontal fracturing, detected in field surveys (Skyttä et al., 2022), on the connectivity to extend the analysis to the third dimension.

6 Conclusions

- 555 – Based on azimuth analysis of our study area, that covers most of the main island of Åland~~Islands-mainland~~, the regional fracture pattern is dominated by WNW-ESE and N-S oriented lineaments. In particular, the WNW-ESE oriented lineaments can be expected to correspond to large brittle bedrock structures that cut the Åland rapakivi batholith as they are prominent in geophysical rasters whereas N-S trending lineaments might mostly represent glacial deposits rather than bedrock structures.
- 560 – Using the scale of observation of 1:20 000 we generated lineament data within the 10 to 500 *m* interval from which brittle structure data ~~is~~are lacking in past studies. However, ~~although we produced lineament data within this range, we found that the lineament lengths~~the lineament data we collected did not fit ~~the same~~a common power-law trend ~~as lineaments with higher lengths, even within the same scale, indicated by the power-law cut-off of circa 3500 m. Further investigation of methods for fractures digitized from the 1:10 scale and lineaments interpreted from the 1:200 000 scale.~~Further method development on how to address this length gap is therefore still required.
- 565 – The length distribution analysis of traces of each scale, results in power-law exponents of -2.09, -2.26 and -1.14 for the 1:10, 1:20 000 and 1:200 000 scales, respectively. However, lognormal trends are statistically more likely for all three scales, which causes high uncertainty in whether the power-law exponent results are significant for individual scale length distributions. A common power-law exponent fitted to all scale length distributions simultaneously has an exponent of -1.13 ~~.However, using only tail cut-offs, the 1:10 scale fractures and 1:20 000 scale lineaments do not adequately fit the common power-law trend while the 1:200 000 scale lineaments fit it better~~but the individual distributions might follow
- 570 distinct power-laws better than a common one.
- A trend is observed where the 1:10 scale outcrop fractures show a lower degree of X-nodes and values of *Connections per Branch* compared to lineaments from scales 1:20 000 and 1:200 000. Furthermore, the 1:200 000 scale lineaments have the highest degree of X-nodes and values of *Connections per Branch*. This kind of trend in a theoretically scale-independent characteristic should be kept in mind in future studies, especially when restricted to a single scale of observation. The trend might be related to specific methods of digitization or data rather than natural phenomena.
- The lineament data interpreted for the purposes of this paper is openly available. It can be used in any applications where the brittle characteristics of the local bedrock is of interest in Åland Islands including geothermal site characterisation purposes or tectonic brittle geological studies.
- 580 – The methodological development related to multi-scale fracture network characterisation displayed in this paper is freely available as part of the open-source FRACTOPO package. As a recommendation for future method development: The methodology around multi-scale length distributions requires further development and e.g., the development of an algorithm for the purpose of automatic cut-off optimisation. We welcome all contributions and discussion related to our open and freely available code and methods on GitHub.

Code and data availability. Source code for the main fracture network analysis software used, *fractopo* v0.5.1, is available free and openly on GitHub (<https://github.com/nialov/fractopo/tree/v0.5.1>) and Zenodo (Ovaskainen, 2022) and is licensed with the permissive MIT license. Most used data, including Getaberget shoreline fracture trace data, and the code for specific analyses and creation of figures related to this paper is available on Github (<https://github.com/nialov/multi-scale-fracture-networks-aland-islands-2022>; master branch) and Zenodo (Ovaskainen, 2023). The geophysical rasters are not released publicly due to being commercial datasets of the GTK. As previously released as part of another study Ovaskainen et al. (2022), the orthomosaics from the Getaberget shoreline are available on Zenodo (<https://doi.org/10.5281/zenodo.4719627>).

Appendix A: ~~Appendix~~ Other magnetic rasters

The total field DGRF-65 grayscale and tilt derivative DGRF-65 grayscale magnetic maps are displayed in Figure A1.

Appendix B: Lognormal and exponential fits to full length data

Full length distributions of traces and branches for all scales are presented in Figure B1 and associated statistical characteristics in Table B1. The lognormal fit is more probable than the exponential fit for all traces and branches with the exception of 1:200 000 scale branch lengths where the exponential fit is more probable with high statistical significance. The p values for the comparisons between lognormal and exponential fits are statistically significant (< 0.1) with the exception of 1:20 000 scale branch lengths with a value of 0.15.

Author contributions. Nikolas Ovaskainen: Conceptualisation, Methodology, Software, Investigation, Writing - Original Draft. Pietari Skyttä: Investigation, Writing - Original Draft. Nicklas Nordbäck: Conceptualisation, Methodology, Investigation, Writing - Original Draft. Jon Engström: Investigation, Writing - Original Draft.

Competing interests. The authors declare that they have no known competing financial interests or personal relationships that could have appeared to influence the work reported in this paper.

Acknowledgements. We acknowledge the Finnish Research Programme on Spent Fuel Management (2019–2022) and Geological Survey of Finland for funding the KYT KARIKKO -project, Mira Markovaara-Koivisto for geophysical lineament interpretation and integration and integration and comments on the manuscript and Sabina Kraatz for partly interpreting the 1:200 000 scale LiDAR lineaments. We further acknowledge the constructive reviews by ~~XXX and XXX~~ Anonymous reviewer 1 and reviewer 2, Marco Mercuri, and the editorial handling by ~~XXX~~ Stefano Tavani.

Table B1. Parameters of lognormal and exponential length distribution fits for traces and branches for all scales. LN = lognormal, Exp = exponential, D = Kolmogorov-Smirnov distance. R-value is the loglikelihood ratio where a positive value indicates that the lognormal fit is more likely and a negative value that the exponential fit is more likely. The p-value represents the significance of the likelihood where low values (<0.1) correspond to high statistical significance.

<u>Name</u>	<u>n</u>	<u>LN Sigma</u>	<u>LN Mu</u>	<u>Exp Lambda</u>	<u>LN D</u>	<u>Exp D</u>	<u>LN vs. Exp R</u>	<u>LN vs. Exp p</u>
<u>1:10 Traces</u>	<u>41618</u>	<u>0.99</u>	<u>-0.49</u>	<u>0.91</u>	<u>0.04</u>	<u>0.12</u>	<u>40.85</u>	<u>0.00e+00</u>
<u>1:10 Branches</u>	<u>94014</u>	<u>0.96</u>	<u>-1.25</u>	<u>2.2</u>	<u>6.61e-03</u>	<u>0.07</u>	<u>66.76</u>	<u>0.00e+00</u>
<u>1:20 000 Traces</u>	<u>621</u>	<u>1.02</u>	<u>6.89</u>	<u>6.04e-04</u>	<u>0.02</u>	<u>0.07</u>	<u>5.58</u>	<u>2.46e-08</u>
<u>1:20 000 Branches</u>	<u>2037</u>	<u>0.94</u>	<u>5.67</u>	<u>2.36e-03</u>	<u>0.06</u>	<u>0.09</u>	<u>1.43</u>	<u>0.15</u>
<u>1:200 000 Traces</u>	<u>206</u>	<u>0.95</u>	<u>8.73</u>	<u>1.02e-04</u>	<u>0.05</u>	<u>0.09</u>	<u>3.69</u>	<u>2.26e-04</u>
<u>1:200 000 Branches</u>	<u>1195</u>	<u>1.14</u>	<u>6.65</u>	<u>8.09e-04</u>	<u>0.09</u>	<u>0.05</u>	<u>-5.65</u>	<u>1.57e-08</u>

References

- 610 Alstott, J., Bullmore, E., and Plenz, D.: Powerlaw: a Python package for analysis of heavy-tailed distributions, PLoS ONE, 9, e85777, <https://doi.org/10.1371/journal.pone.0085777>, arXiv: 1305.0215, 2014.
- Andrews, B. J., Roberts, J. J., Shipton, Z. K., Bigi, S., Tartarello, M. C., and Johnson, G.: How do we see fractures? Quantifying subjective bias in fracture data collection, Solid Earth, 10, 487–516, <https://doi.org/10.5194/se-10-487-2019>, 2019.
- Bertrand, L., Géraud, Y., Le Garzic, E., Place, J., Diraison, M., Walter, B., and Haffen, S.: A multiscale analysis of a fracture pattern in granite: 615 A case study of the Tamariu granite, Catalunya, Spain, Journal of Structural Geology, 78, 52–66, <https://doi.org/10.1016/j.jsg.2015.05.013>, 2015.
- Bond, C., Gibbs, A., Shipton, Z., and Jones, S.: What do you think this is? “Conceptual uncertainty” in geoscience interpretation, GSA Today, 17, 4, <https://doi.org/10.1130/GSAT01711A.1>, 2007.
- Bonnet, E., Bour, O., Odling, N. E., Davy, P., Main, I., Cowie, P., and Berkowitz, B.: Scaling of fracture systems in geological media, Reviews 620 of Geophysics, 39, 347–383, <https://doi.org/10.1029/1999RG000074>, 2001.
- Bossennec, C., Frey, M., Seib, L., Bär, K., and Sass, I.: Multiscale Characterisation of Fracture Patterns of a Crystalline Reservoir Analogue, Geosciences, 11, 371, <https://doi.org/10.3390/geosciences11090371>, 2021.

- Bour, O., Davy, P., Darcel, C., and Odling, N.: A statistical scaling model for fracture network geometry, with validation on a multiscale mapping of a joint network (Hornelen Basin, Norway), *Journal of Geophysical Research*, 107, 2113, <https://doi.org/10.1029/2001JB000176>, 2002.
- 625
- Ceccato, A., Tartaglia, G., Antonellini, M., and Viola, G.: Multiscale lineament analysis and permeability heterogeneity of fractured crystalline basement blocks, *Solid Earth*, 13, 1431–1453, <https://doi.org/10.5194/se-13-1431-2022>, 2022.
- Chabani, A., Trullenque, G., Ledésert, B. A., and Klee, J.: Multiscale Characterization of Fracture Patterns: A Case Study of the Noble Hills Range (Death Valley, CA, USA), *Application to Geothermal Reservoirs*, *Geosciences*, 11, 280, <https://doi.org/10.3390/geosciences11070280>, 2021.
- 630
- Clauset, A., Shalizi, C. R., and Newman, M. E. J.: Power-law distributions in empirical data, *SIAM Review*, 51, 661–703, <https://doi.org/10.1137/070710111>, arXiv: 0706.1062, 2009.
- Cottrell, M.: Occurrence of Large Fractures in the Host Rock for a Spent Nuclear Fuel Repository: Earthquake Study, Working Report 2021-09, Posiva, Olkiluoto, 2022.
- 635
- Davy, P.: On the frequency-length distribution of the San Andreas Fault System, *Journal of Geophysical Research: Solid Earth*, 98, 12 141–12 151, <https://doi.org/10.1029/93JB00372>, 1993.
- Davy, P., Bour, O., De Dreuzy, J.-R., and Darcel, C.: Flow in multiscale fractal fracture networks, *Geological Society, London, Special Publications*, 261, 31–45, <https://doi.org/10.1144/GSL.SP.2006.261.01.03>, 2006.
- Davy, P., Le Goc, R., Darcel, C., Bour, O., de Dreuzy, J. R., and Munier, R.: A likely universal model of fracture scaling and its consequence for crustal hydromechanics, *Journal of Geophysical Research*, 115, B10 411, <https://doi.org/10.1029/2009JB007043>, 2010.
- 640
- Dichiarante, A. M., McCaffrey, K. J. W., Holdsworth, R. E., Bjørnarå, T. I., and Dempsey, E. D.: Fracture attribute scaling and connectivity in the Devonian Orcadian Basin with implications for geologically equivalent sub-surface fractured reservoirs, *Solid Earth*, 11, 2221–2244, <https://doi.org/10.5194/se-11-2221-2020>, 2020.
- Dühnforth, M., Anderson, R. S., Ward, D., and Stock, G. M.: Bedrock fracture control of glacial erosion processes and rates, *Geology*, 38, 423–426, <https://doi.org/10.1130/G30576.1>, 2010.
- 645
- Engström, J., Markovaara-Koivisto, M., Ovaskainen, N., Nordbäck, N., Paananen, M., Aaltonen, I., Martinkauppi, A., Laxström, H., and Wik, H.: Aerogeophysics and light detecting and ranging (LiDAR)-based lineament interpretation of Finland at the scale of 1:500 000, preprint, Tectonic plate interactions, magma genesis, and lithosphere deformation at all scales/Structural geology and tectonics, paleoseismology, rock physics, experimental deformation/Structural geology, <https://doi.org/10.5194/egusphere-2023-448>, 2023.
- 650
- Fox, A., Forchhammer, K., Pettersson, A., La Pointe, P., and Lim, D.-H.: Geological Discrete Fracture Network Model for the Olkiluoto Site, Eurajoki, Finland, Posiva Report 2012-27, Posiva, Eurajoki, Finland, 2012.
- Frey, M., Bossennec, C., Seib, L., Bär, K., Schill, E., and Sass, I.: Interdisciplinary fracture network characterization in the crystalline basement: a case study from the Southern Odenwald, SW Germany, *Solid Earth*, 13, 935–955, <https://doi.org/10.5194/se-13-935-2022>, 2022.
- 655
- Geological Survey of Finland: Striations, <https://hakku.gtk.fi/en>, 2014.
- Geological Survey of Finland: Bedrock of Finland 1:200 000, <https://hakku.gtk.fi/en>, 2017.
- Gillies, S., van der Wel, C., Van den Bossche, J., Taves, M. W., Arnott, J., Ward, B. C., and others: Shapely, <https://github.com/shapely/shapely>, 2022.
- 660
- Glasser, N. F., Roman, M., Holt, T. O., Žebre, M., Patton, H., and Hubbard, A. L.: Modification of bedrock surfaces by glacial abrasion and quarrying: Evidence from North Wales, *Geomorphology*, 365, 107 283, <https://doi.org/10.1016/j.geomorph.2020.107283>, 2020.

- Goodchild, M. F.: Metrics of scale in remote sensing and GIS, *International Journal of Applied Earth Observation and Geoinformation*, 3, 114–120, [https://doi.org/10.1016/S0303-2434\(01\)85002-9](https://doi.org/10.1016/S0303-2434(01)85002-9), 2001.
- Goodchild, M. F.: Scale in GIS: An overview, *Geomorphology*, 130, 5–9, <https://doi.org/10.1016/j.geomorph.2010.10.004>, 2011.
- Haapala, I. and Rämö, O. T.: Tectonic setting and origin of the Proterozoic rapakivi granites of southeastern Fennoscandia, *Earth and Environmental Science Transactions of the Royal Society of Edinburgh*, 83, 165–171, <https://doi.org/10.1017/S0263593300007859>, 1992.
- 665 Hardebol, N. J., Maier, C., Nick, H., Geiger, S., Bertotti, G., and Boro, H.: Multiscale fracture network characterization and impact on flow: A case study on the Latemar carbonate platform, *Journal of Geophysical Research: Solid Earth*, 120, 8197–8222, <https://doi.org/10.1002/2015JB011879>, 2015.
- Harris, C. R., Millman, K. J., van der Walt, S. J., Gommers, R., Virtanen, P., Cournapeau, D., Wieser, E., Taylor, J., Berg, S., Smith, N. J., Kern, R., Picus, M., Hoyer, S., van Kerkwijk, M. H., Brett, M., Haldane, A., del Río, J. F., Wiebe, M., Peterson, P., Gérard-Marchant, P., Sheppard, K., Reddy, T., Weckesser, W., Abbasi, H., Gohlke, C., and Oliphant, T. E.: Array programming with NumPy, *Nature*, 585, 357–362, <https://doi.org/10.1038/s41586-020-2649-2>, 2020.
- 670 Hartley, L., Appleyard, P., Baxter, S., Hoek, J., Joyce, S., Mosley, K., Williams, T., Fox, A., Cottrell, M., La Pointe, P., Gehör, S., Darcel, C., Le Goc, R., Aaltonen, I., Vanhanarkaus, O., Löfman, J., and Poteri, A.: Discrete Fracture Network Modelling (Version 3) in Support of Olkiluoto Site Description 2018, Working Report 2017-32, Posiva, Olkiluoto, 2018.
- 675 Hautaniemi, H., Kurimo, M., Multala, J., Leväniemi, H., and Vironmäki, J.: The “Three In One” aerogeophysical concept of GTK in 2004, Special Paper 39, Geological Survey of Finland, Espoo, Finland, 2005.
- Heffer, K. and Bevan, T.: Scaling Relationships in Natural Fractures: Data, Theory, and Application, in: All Days, pp. SPE–20 981–MS, SPE, The Hague, Netherlands, <https://doi.org/10.2118/20981-MS>, 1990.
- 680 Hunter, J. D.: Matplotlib: A 2D graphics environment, *Computing in Science & Engineering*, 9, 90–95, <https://doi.org/10.1109/MCSE.2007.55>, publisher: IEEE COMPUTER SOC, 2007.
- Jordahl, K., Bossche, J. V. d., Fleischmann, M., McBride, J., Wasserman, J., Richards, M., Badaracco, A. G., Snow, A. D., Gerard, J., Tratner, J., Perry, M., Ward, B., Farmer, C., Hjelle, G. A., Cochran, M., Taves, M., Gillies, S., Caria, G., Culbertson, L., Bartos, M., Eubank, N., Bell, R., sangarshanan, Flavin, J., Rey, S., maxalbert, Bilogur, A., Ren, C., Arribas-Bel, D., and Mesejo-León, D.: geopandas/geopandas: v0.12.1, <https://doi.org/10.5281/zenodo.7262879>, 2022.
- 685 Karell, F., Ehlers, C., and Airo, M.-L.: Emplacement and magnetic fabrics of rapakivi granite intrusions within Wiborg and Åland rapakivi granite batholiths in Finland, *Tectonophysics*, 614, 31–43, <https://doi.org/10.1016/j.tecto.2013.12.006>, 2014.
- Korja, A. and Heikkinen, P. J.: Proterozoic extensional tectonics of the central Fennoscandian Shield: Results from the Baltic and Bothnian Echoes from the Lithosphere experiment, *Tectonics*, 14, 504–517, <https://doi.org/10.1029/94TC02905>, 1995.
- 690 Kosunen, P.: The rapakivi granite plutons of Bodom and Obbnäs, southern Finland: petrography and geochemistry, *Bulletin of the Geological Society of Finland*, 71, 275–304, <https://doi.org/10.17741/bgsf/71.2.005>, 1999.
- Kruhl, J. H.: Fractal-geometry techniques in the quantification of complex rock structures: A special view on scaling regimes, inhomogeneity and anisotropy, *Journal of Structural Geology*, 46, 2–21, <https://doi.org/10.1016/j.jsg.2012.10.002>, 2013.
- Lahiri, S.: Estimating effective permeability using connectivity and branch length distribution of fracture network, *Journal of Structural Geology*, 146, 104 314, <https://doi.org/10.1016/j.jsg.2021.104314>, 2021.
- 695 Laitakari, I., Rämö, T., Suominen, V., Niin, M., Stepanov, K., and Amantov, A.: Subjotnian: Rapakivi granites and related rocks in the surroundings of the Gulf of Finland, Special Paper of the Geological Survey of Finland 21, Geological Survey of Finland, 1996.

- Libby, S., Turnbull, R., Cottrell, M., Bym, T., Josephson, N., Munier, R., Selroos, J., and Mas Ivars, D.: Grown Discrete Fracture Networks: a new method for generating fractures according to their deformation history, vol. 19, p. 8, ARMA, New York, 2019.
- 700 Loza Espejel, R., Alves, T. M., and Blenkinsop, T. G.: Multi-scale fracture network characterisation on carbonate platforms, *Journal of Structural Geology*, 140, 104–160, <https://doi.org/10.1016/j.jsg.2020.104160>, 2020.
- Luosto, U., Tiira, T., Korhonen, H., Azbel, I., Burmin, V., Buyanov, A., Kosminskaya, I., Ionkis, V., and Sharov, N.: Crust and upper mantle structure along the DSS Baltic profile in SE Finland, *Geophysical Journal International*, 101, 89–110, <https://doi.org/10.1111/j.1365-246X.1990.tb00760.x>, 1990.
- 705 Maillot, J., Davy, P., Le Goc, R., Darcel, C., and de Dreuzy, J.: Connectivity, permeability, and channeling in randomly distributed and kinematically defined discrete fracture network models: PERMEABILITY OF DISCRETE FRACTURE NETWORK, *Water Resources Research*, 52, 8526–8545, <https://doi.org/10.1002/2016WR018973>, 2016.
- Manzocchi, T.: The connectivity of two-dimensional networks of spatially correlated fractures, *Water Resources Research*, 38, 1–1–1–20, <https://doi.org/10.1029/2000WR000180>, 2002.
- 710 Marrett, R.: Aggregate properties of fracture populations, *Journal of Structural Geology*, 18, 169–178, [https://doi.org/10.1016/S0191-8141\(96\)80042-3](https://doi.org/10.1016/S0191-8141(96)80042-3), 1996.
- Marrett, R., Ortega, O. J., and Kelsey, C. M.: Extent of power-law scaling for natural fractures in rock, *Geology*, 27, 799, [https://doi.org/10.1130/0091-7613\(1999\)027<0799:EOPLSF>2.3.CO;2](https://doi.org/10.1130/0091-7613(1999)027<0799:EOPLSF>2.3.CO;2), 1999.
- Mauldon, M., Dunne, W., and Rohrbaugh, M.: Circular scanlines and circular windows: new tools for characterizing the geometry of fracture traces, *Journal of Structural Geology*, 23, 247–258, [https://doi.org/10.1016/S0191-8141\(00\)00094-8](https://doi.org/10.1016/S0191-8141(00)00094-8), 2001.
- 715 Middleton, M., Schnur, T., Sorjonen-Ward, P., and Hyvönen, E.: Geological lineament interpretation using the object-based image analysis approach: results of semi-automated analyses versus visual interpretation, *Special Paper 57*, Geological Survey of Finland, Finland, https://tupa.gtk.fi/julkaisu/specialpaper/sp_057.pdf, 2015.
- Mäkel, G. H.: The modelling of fractured reservoirs: constraints and potential for fracture network geometry and hydraulics analysis, *Geological Society, London, Special Publications*, 292, 375–403, <https://doi.org/10.1144/SP292.21>, 2007.
- 720 National Land Survey of Finland: Laser scanning data 0,5 p, <https://tiedostopalvelu.maanmittauslaitos.fi/tp/kartta?lang=en>, 2010.
- Nelson, R.: *Geologic analysis of naturally fractured reservoirs*, Gulf Publishing, Houston, 1985.
- Nironen, M.: The Svecofennian Orogen: a tectonic model, *Precambrian Research*, 86, 21–44, [https://doi.org/10.1016/S0301-9268\(97\)00039-9](https://doi.org/10.1016/S0301-9268(97)00039-9), 1997.
- 725 Nixon, C. W., Sanderson, D. J., and Bull, J. M.: Analysis of a strike-slip fault network using high resolution multibeam bathymetry, offshore NW Devon U.K., *Tectonophysics*, 541–543, 69–80, <https://doi.org/10.1016/j.tecto.2012.03.021>, 2012.
- Nur, A.: The origin of tensile fracture lineaments, *Journal of Structural Geology*, 4, 31–40, [https://doi.org/10.1016/0191-8141\(82\)90004-9](https://doi.org/10.1016/0191-8141(82)90004-9), 1982.
- Nyberg, B., Nixon, C. W., and Sanderson, D. J.: NetworkGT: A GIS tool for geometric and topological analysis of two-dimensional fracture networks, *Geosphere*, 14, 1618–1634, <https://doi.org/10.1130/GES01595.1>, 2018.
- 730 Odling, N. E.: Scaling and connectivity of joint systems in sandstones from western Norway, *Journal of Structural Geology*, 19, 1257–1271, [https://doi.org/10.1016/S0191-8141\(97\)00041-2](https://doi.org/10.1016/S0191-8141(97)00041-2), 1997.
- Odling, N. E., Gillespie, P., Bourguin, B., Castaing, C., Chiles, J. P., Christensen, N. P., Fillion, E., Genter, A., Olsen, C., Thrane, L., Trice, R., Aarseth, E., Walsh, J. J., and Watterson, J.: Variations in fracture system geometry and their implications for fluid flow in fractures hydrocarbon reservoirs, *Petroleum Geoscience*, 5, 373–384, <https://doi.org/10.1144/petgeo.5.4.373>, 1999.
- 735

- Ojala, A. and Sarala, P.: Editorial: LiDAR – rapid developments in remote sensing of geological features, *Bulletin of the Geological Society of Finland*, 89, 61–63, <https://doi.org/10.17741/bgsf/89.2.ed>, 2017.
- Ovaskainen, N.: Scalability of lineament and fracture networks within the crystalline Wiborg Rapakivi Batholith, SE Finland, Master's thesis, Turun Yliopisto, Turku, <http://urn.fi/URN:NBN:fi-fe202003259211>, 2020.
- 740 Ovaskainen, N.: fractopo, <https://doi.org/10.5281/ZENODO.7373013>, 2022.
- Ovaskainen, N.: nialov/multi-scale-fracture-networks-aland-islands-2022, <https://doi.org/10.5281/ZENODO.7298370>, 2023.
- Ovaskainen, N., Nordbäck, N., Skyttä, P., and Engström, J.: A new subsampling methodology to optimize the characterization of two-dimensional bedrock fracture networks, *Journal of Structural Geology*, 155, 104–128, <https://doi.org/10.1016/j.jsg.2022.104528>, 2022.
- Paananen, M. and Posiva Oy: Completed lineament interpretation of the Olkiluoto region, Posiva Report 2013-02, Posiva, Eurajoki, Finland, 745 2013.
- Palamakumbura, R., Krabbendam, M., Whitbread, K., and Arnhardt, C.: Data acquisition by digitizing 2-D fracture networks and topographic lineaments in geographic information systems: further development and applications, *Solid Earth*, 11, 1731–1746, <https://doi.org/10.5194/se-11-1731-2020>, 2020.
- Palmu, J.-P., Ojala, A. E., Ruskeeniemi, T., Sutinen, R., and Mattila, J.: LiDAR DEM detection and classification of postglacial faults and 750 seismically-induced landforms in Finland: a paleoseismic database, *GFF*, 137, 344–352, <https://doi.org/10.1080/11035897.2015.1068370>, 2015.
- Pickering, G., Bull, J., and Sanderson, D.: Sampling power-law distributions, *Tectonophysics*, 248, 1–20, [https://doi.org/10.1016/0040-1951\(95\)00030-Q](https://doi.org/10.1016/0040-1951(95)00030-Q), 1995.
- Piipponen, K., Martinkauppi, A., Korhonen, K., Vallin, S., Arola, T., Bischoff, A., and Leppäharju, N.: The deeper the better? A 755 thermogeological analysis of medium-deep borehole heat exchangers in low-enthalpy crystalline rocks, *Geothermal Energy*, 10, 12, <https://doi.org/10.1186/s40517-022-00221-7>, 2022.
- Prabhakaran, R., Bruna, P.-O., Bertotti, G., and Smeulders, D.: An automated fracture trace detection technique using the complex shearlet transform, *Solid Earth*, 10, 2137–2166, <https://doi.org/10.5194/se-10-2137-2019>, 2019.
- Priest, S. D.: *Discontinuity Analysis for Rock Engineering*, Springer Netherlands, Dordrecht, <https://doi.org/10.1007/978-94-011-1498-1>, 760 1993.
- Rohrbaugh, M. B., Dunne, W., and Mauldon, M.: Estimating fracture trace intensity, density, and mean length using circular scan lines and windows, *AAPG Bulletin*, 86, <https://doi.org/10.1306/61EEDE0E-173E-11D7-8645000102C1865D>, 2002.
- Rämö, O. and Haapala, I.: Chapter 12 Rapakivi Granites, in: *Developments in Precambrian Geology*, vol. 14, pp. 533–562, Elsevier, [https://doi.org/10.1016/S0166-2635\(05\)80013-1](https://doi.org/10.1016/S0166-2635(05)80013-1), 2005.
- 765 Sanderson, D. J. and Nixon, C. W.: The use of topology in fracture network characterization, *Journal of Structural Geology*, 72, 55–66, <https://doi.org/10.1016/j.jsg.2015.01.005>, 2015.
- Sanderson, D. J. and Nixon, C. W.: Topology, connectivity and percolation in fracture networks, *Journal of Structural Geology*, 115, 167–177, <https://doi.org/10.1016/j.jsg.2018.07.011>, 2018.
- Sanderson, D. J. and Peacock, D. C.: Making rose diagrams fit-for-purpose, *Earth-Science Reviews*, 201, 103–105, 770 <https://doi.org/10.1016/j.earscirev.2019.103055>, 2020.
- Skyttä, P., Kinnunen, J., Palmu, J.-P., and Korkka-Niemi, K.: Bedrock structures controlling the spatial occurrence and geometry of 1.8Ga younger glacial fluvial deposits — Example from First Salpausselkä, southern Finland, *Global and Planetary Change*, 135, 66–82, <https://doi.org/10.1016/j.gloplacha.2015.10.007>, 2015.

- 775 Skyttä, P., Ovaskainen, N., Nordbäck, N., Engström, J., and Mattila, J.: Fault-induced mechanical anisotropy and its effects on fracture patterns in crystalline rocks, *Journal of Structural Geology*, 146, 104–304, <https://doi.org/10.1016/j.jsg.2021.104304>, 2021.
- Skyttä, P., Nordbäck, N., Ojala, A., Putkinen, N., Aaltonen, I., Engström, J., Mattila, J., and Ovaskainen, N.: The interplay of bedrock fractures and glacial erosion in defining the present-day land surface topography in mesoscopically isotropic crystalline rocks, 2022.
- Sornette, A., Davy, P., and Sornette, D.: Growth of fractal fault patterns, *Physical Review Letters*, 65, 2266–2269, <https://doi.org/10.1103/PhysRevLett.65.2266>, 1990.
- 780 Strijker, G., Bertotti, G., and Luthi, S. M.: Multi-scale fracture network analysis from an outcrop analogue: A case study from the Cambro-Ordovician clastic succession in Petra, Jordan, *Marine and Petroleum Geology*, 38, 104–116, <https://doi.org/10.1016/j.marpetgeo.2012.07.003>, 2012.
- Torvela, T. and Annersten, H.: PT-conditions of deformation within the Palaeoproterozoic South Finland shear zone: Some geothermobarometric results, *Bulletin of the Geological Society of Finland*, 77, 151–164, <https://doi.org/10.17741/bgsf/77.2.004>, 2005.
- 785 Torvela, T., Mänttari, I., and Hermansson, T.: Timing of deformation phases within the South Finland shear zone, SW Finland, *Precambrian Research*, 160, 277–298, <https://doi.org/10.1016/j.precamres.2007.08.002>, 2008.
- Tyrén, S.: Lineament interpretation. Short review and methodology, Technical Report SSM-2010-33, Swedish Radiation Safety Authority, Stockholm, Sweden, <https://www.osti.gov/etdweb/biblio/1013181>, 2011.
- Verduzco, B., Fairhead, J. D., Green, C. M., and MacKenzie, C.: New insights into magnetic derivatives for structural mapping, *The Leading Edge*, 23, 116–119, <https://doi.org/10.1190/1.1651454>, 2004.
- 790 Vignerresse, J.: The specific case of the Mid-Proterozoic rapakivi granites and associated suite within the context of the Columbia supercontinent, *Precambrian Research*, 137, 1–34, <https://doi.org/10.1016/j.precamres.2005.01.001>, 2005.
- Väisänen, M. and Skyttä, P.: Late Svecofennian shear zones in southwestern Finland, *GFF*, 129, 55–64, <https://doi.org/10.1080/11035890701291055>, 2007.
- 795 Woodard, J. B., Zoet, L. K., Iverson, N. R., and Helanow, C.: Linking bedrock discontinuities to glacial quarrying, *Annals of Glaciology*, 60, 66–72, <https://doi.org/10.1017/aog.2019.36>, 2019.
- Zeeb, C., Gomez-Rivas, E., Bons, P. D., and Blum, P.: Evaluation of sampling methods for fracture network characterization using outcrops, *AAPG Bulletin*, 97, 1545–1566, <https://doi.org/10.1306/02131312042>, 2013.

Åland - Bedrock of Finland 1:200 000 & Glacial Striations

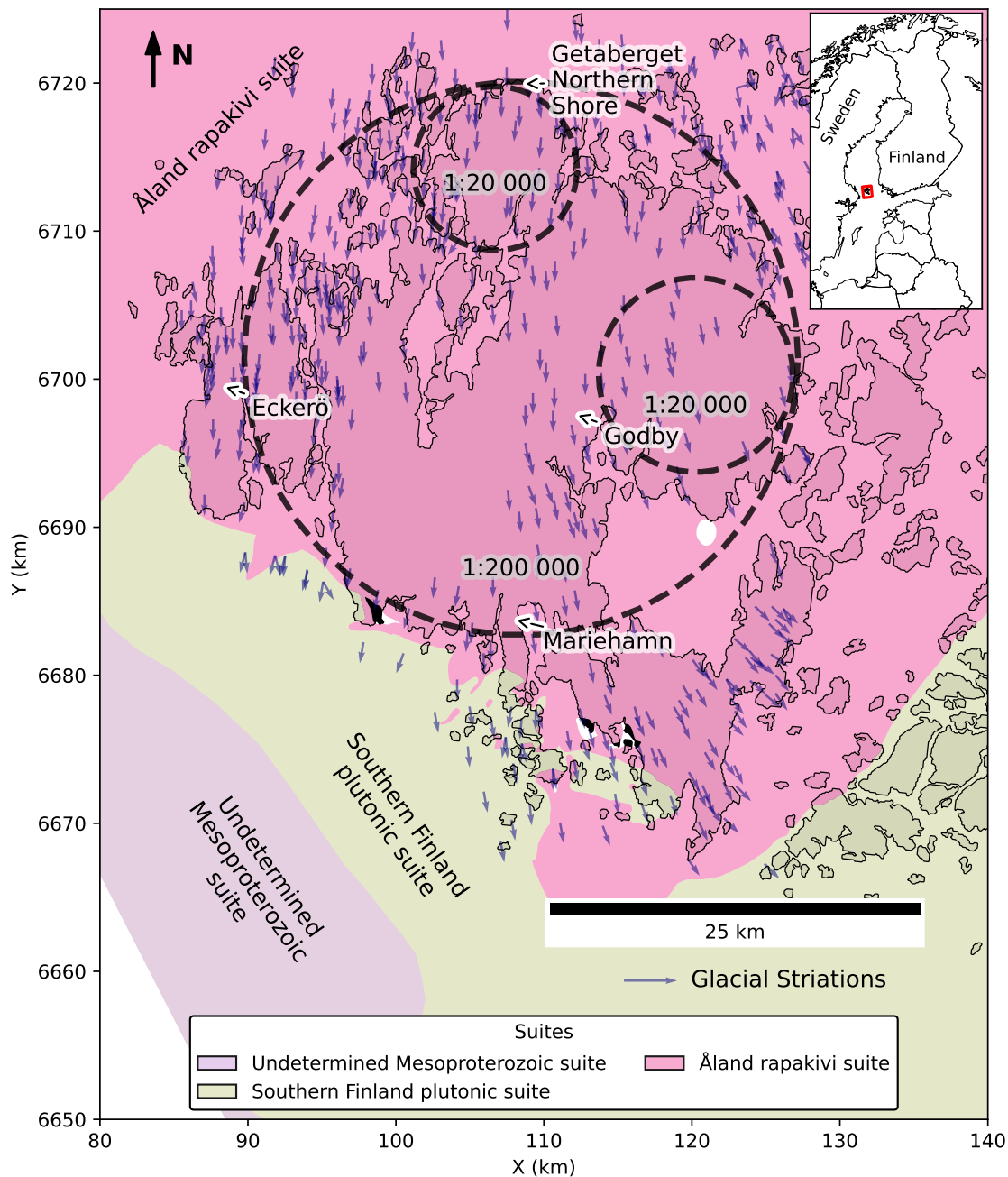


Figure 1. Lithological suites (Geological Survey of Finland, 2017), target areas for lineament extraction ([1:200 000 covers most of the main island while 1:20 000 areas only cover the northern and eastern parts](#)) and glacial striations mapped by the Geological Survey of Finland (Geological Survey of Finland, 2014).

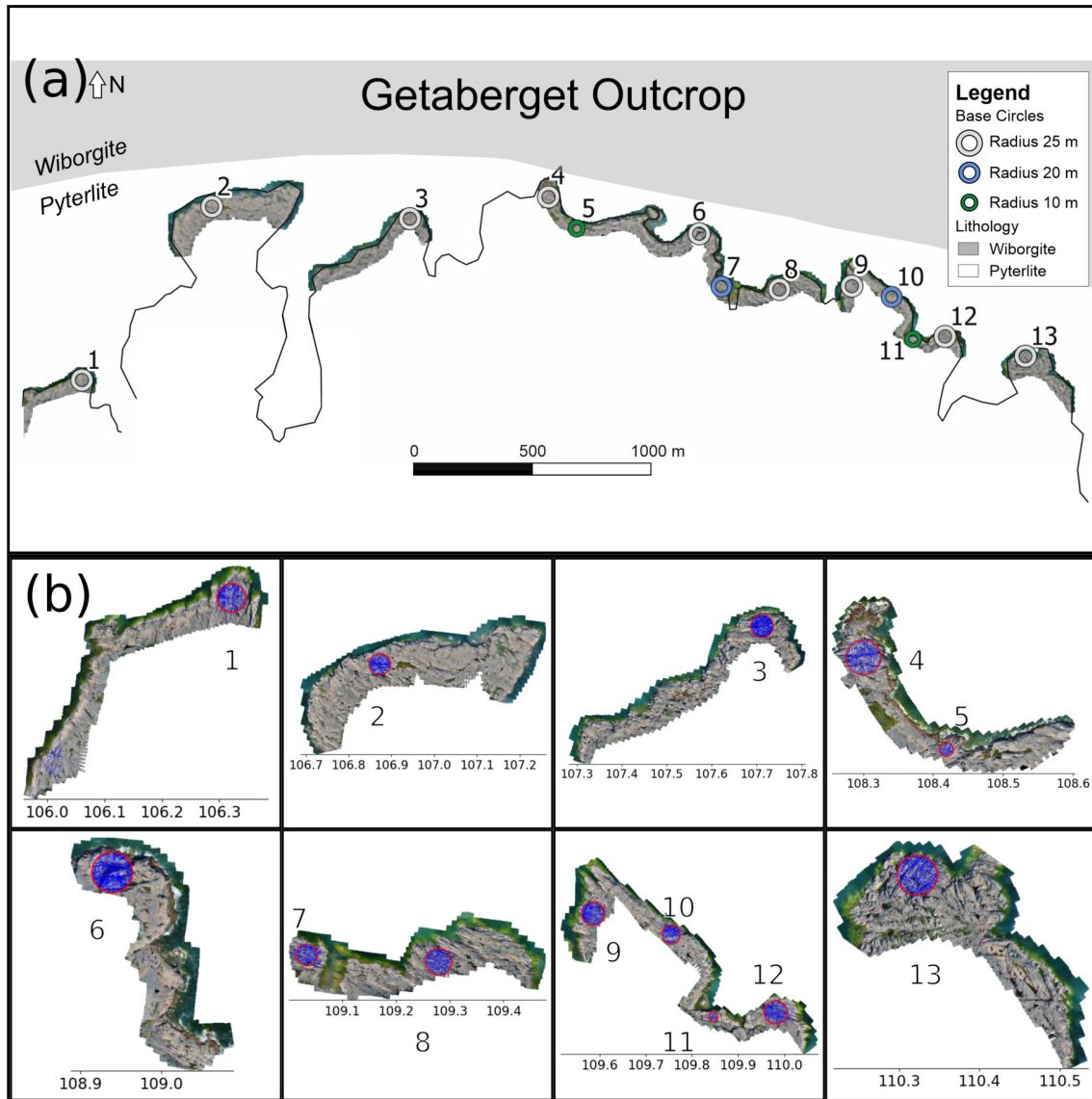


Figure 2. A. (a) Overview of the Getaberget outcrop with local lithology (Geological Survey of Finland, 2017). Figure from Ovaskainen et al. (2022). B. Drone imaged orthomosaics superpositioned with fracture digitisation target areas and digitised fracture traces. Data from Ovaskainen et al. (2022).

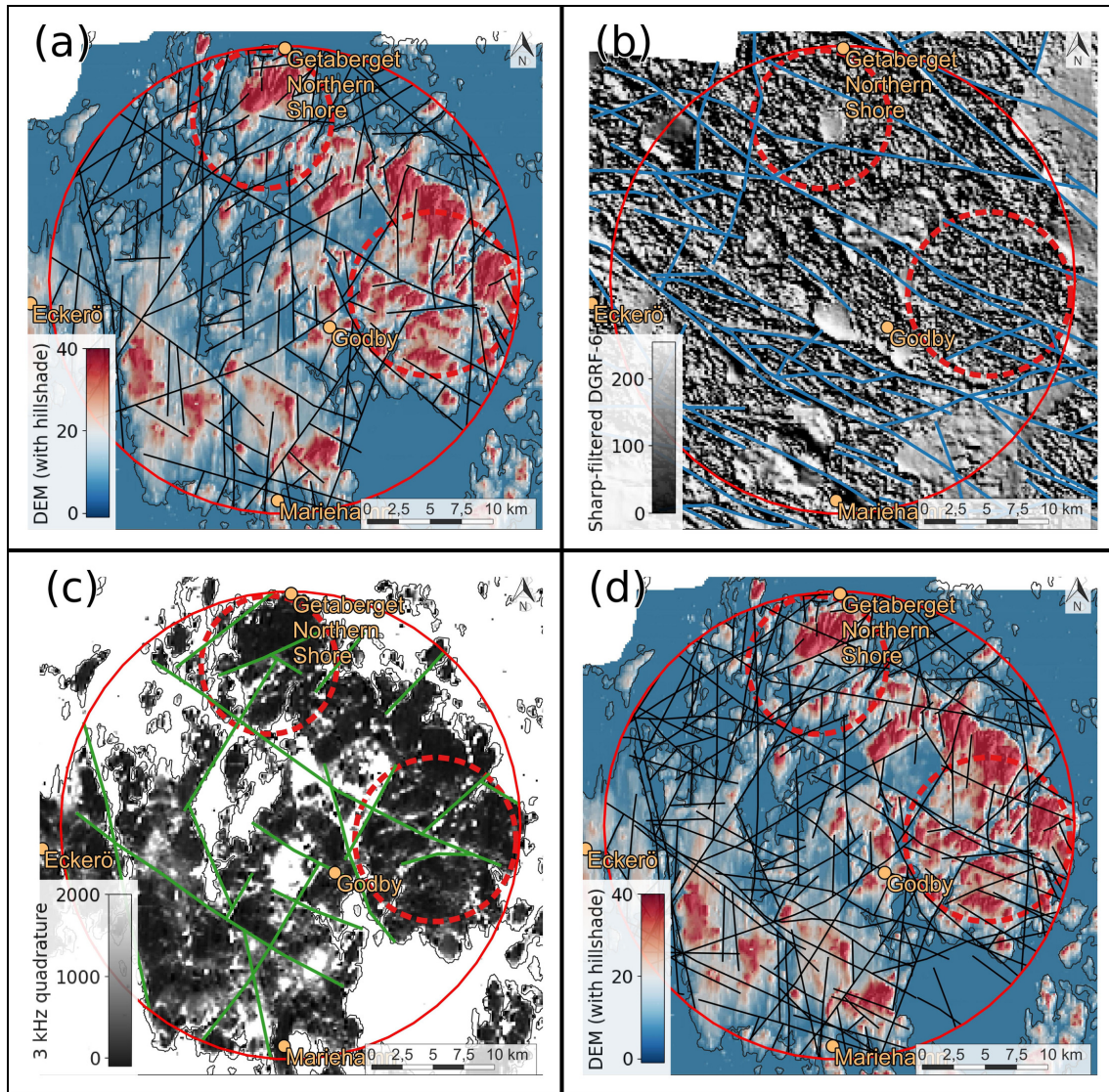


Figure 3. All subfigures (Aa, Bb and Cc) contain the 1:200 000 scale lineaments that were interpreted using the displayed raster. In the case of subfigure B(b) two other magnetic maps were used (Total field DGRF-65 and Tilt derivative DGRF-65) to interpret the displayed lineaments (See Appendix ??A). A-(a) Map of a Light Detection And Ranging (LiDAR) -based digital elevation model (DEM) with a hillshade overlay. B-(b) Map with grayscale visualised sharp-filtered DGRF-65 magnetic data. C-(c) Map with grayscale visualised 3 kHz quadrature component electromagnetic data. D-(d) Same map as subfigure A-(a) but with the integrated lineaments overlaid on top.

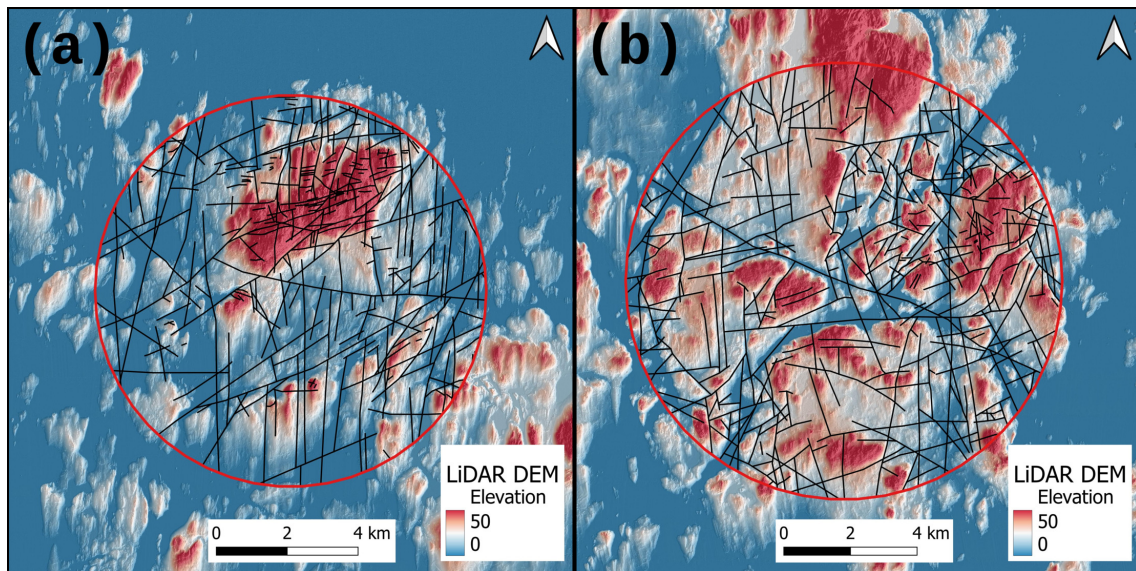


Figure 4. LiDAR DEM overlaid with digitised 1:20 000 scale lineaments and the two separate target areas. **A-**(a) Northern area of Getaberget.
B-(b) Eastern area near Godby.

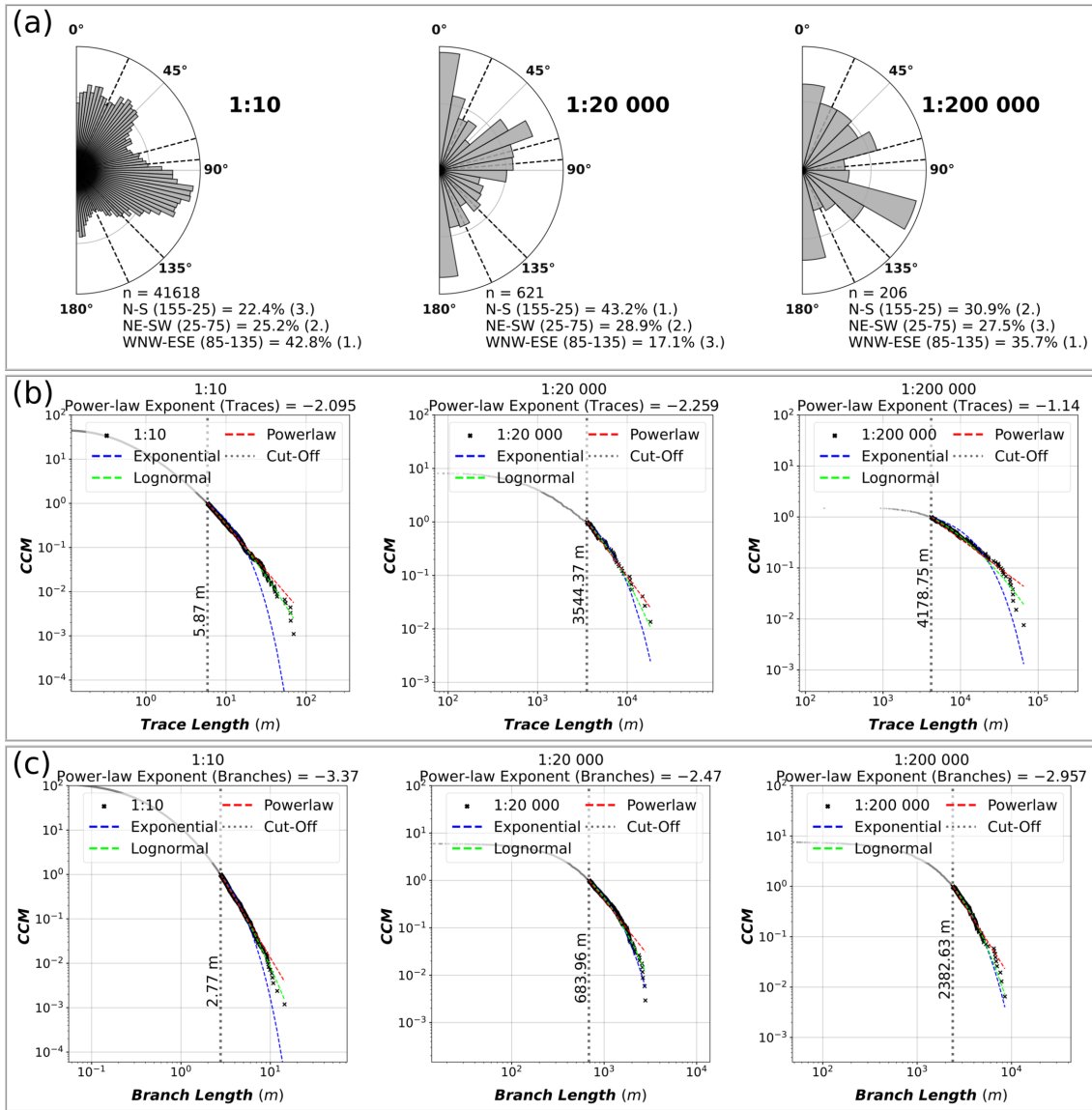


Figure 5. **A-**(a) Equal-area length-weighted rose plots of trace azimuths of each scale along with the percentage of total length that each set contains. The determined sets do not cover all azimuths and therefore the percentages do not add up to 100 %. **B-**(b) Length distributions of traces of each scale on plots with complementary cumulative number (CCM) on the y axis and trace length on the x axis. The distributions are fitted with power-law, lognormal and exponential fits and the automatically determined power-law cut-off is indicated with the vertical dashed line and text. **C-**(c) Length distributions of branches with the same setup as subfigure **B-**(b) except for the x axis which has branch lengths rather than trace lengths.

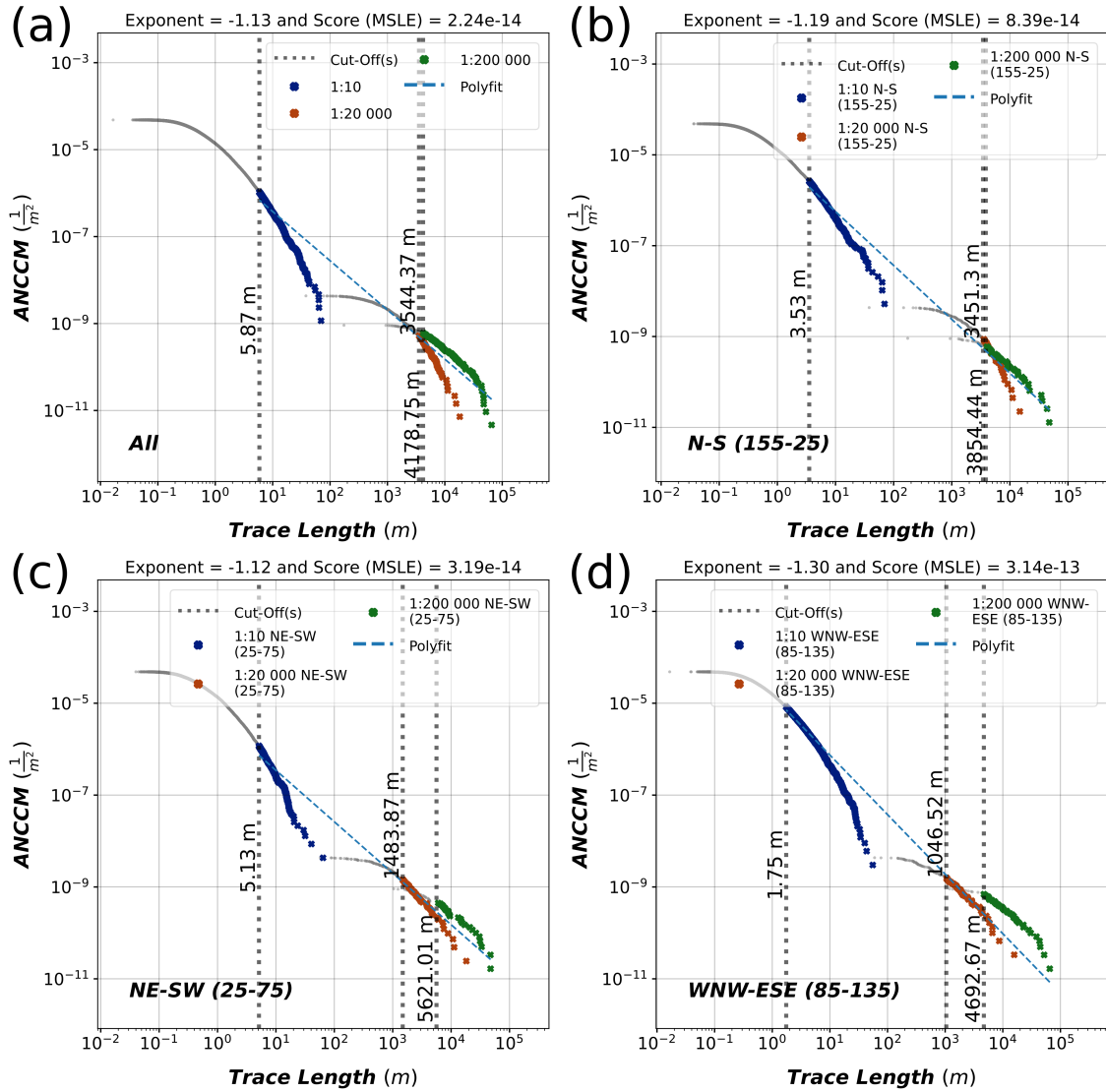


Figure 6. [Plots of multi-scale length distributions with similar plot arrangement to subfigures \(b\) and \(c\) of Figure 5. However, instead of complementary cumulative number we use the Area-Normalised Complementary Cumulative Number \(ANCCM\). The goodness-of-fit is estimated using the Mean Squared Logarithmic Error \(MSLE\).](#) (a) Multi-scale power-law fit to all trace length data. [B-D](#) (b)-(d) Fits to trace length data categorised by defined azimuth sets (Table 4).

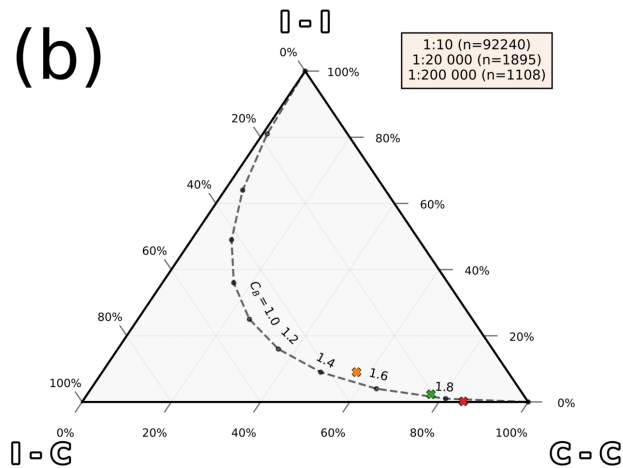
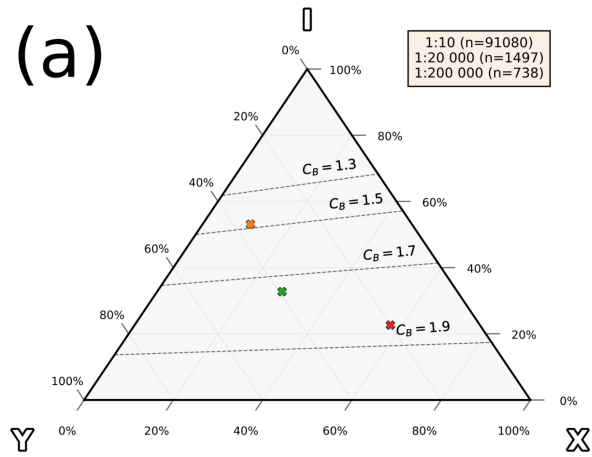


Figure 7. **A-**(a) Ternary plot of topological XYI node proportions for each scale. **B-**(b) Ternary plot of topological (C-C, C-I and I-I) branch proportions.

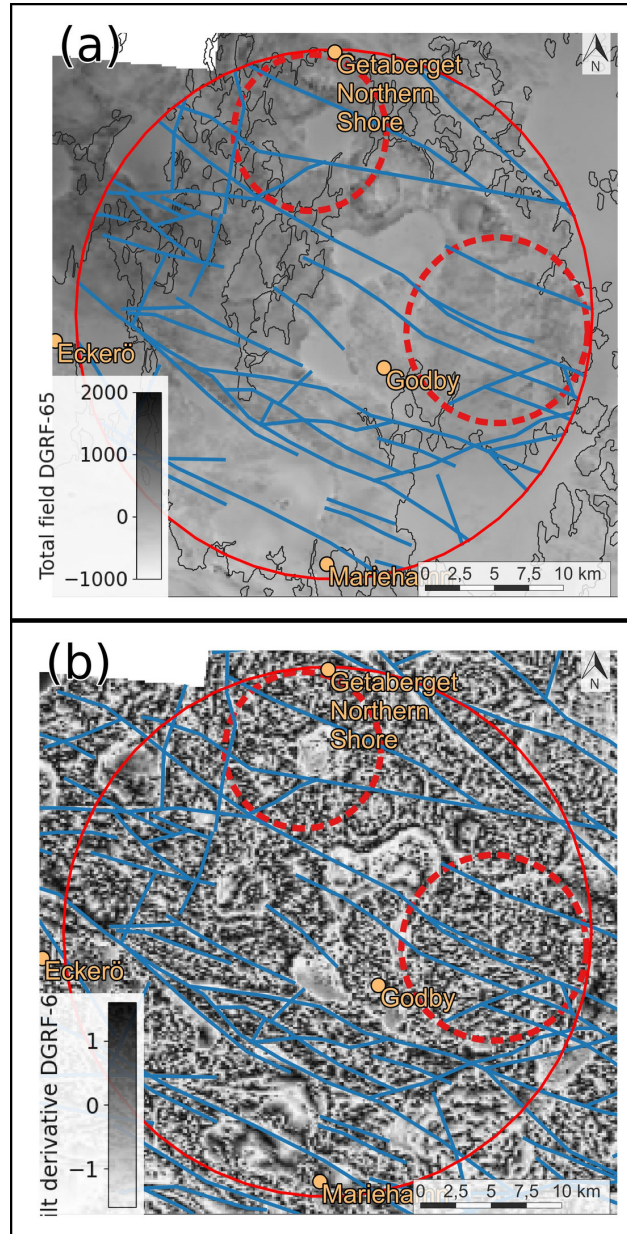


Figure A1. Magnetic lineaments that were interpreted using all three magnetic maps (sharp-filtered DGRF-65, Total field DGRF-65 and Tilt derivative DGRF-65) overlay both of the subfigures. **A-**(a) Total field DGRF-65 grayscale magnetic map used in magnetic lineament interpretation. **B-**(b) Tilt derivative DGRF-65 grayscale magnetic map used in magnetic lineament interpretation.

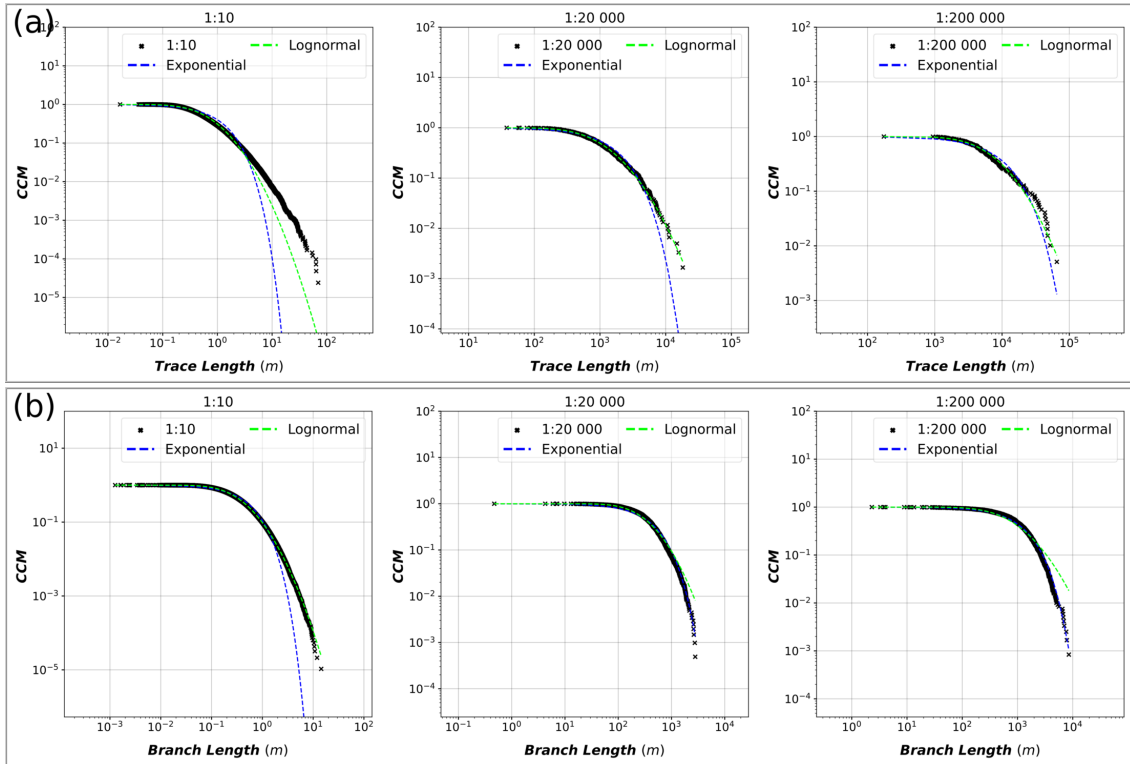


Figure B1. (a) Length distributions of traces of each scale on plots with complementary cumulative number (CCM) on the y axis and trace length on the x axis. The distributions are fitted with lognormal and exponential fits. (b) Length distributions of branches with the same setup as subfigure (a) except for the x axis which has branch lengths rather than trace lengths.