

Effects of a warmer climate and forest composition on soil carbon cycling, soil organic matter stability and stocks in a humid boreal region

David Paré¹, Jérôme Laganière¹, Guy R. Larocque¹, Robert Boutin¹

¹Natural Resources Canada, Canadian Forest Service, Laurentian Forestry Centre, 1055 du P.E.P.S., P.O. Box 10380, Stn. Ste-Foy, Quebec, QC G1V 4C7, Canada

*Correspondance: David Paré David.Pare@canada.ca

Research Topic: Vegetation Effects on Soil Organic Matter in Forested Ecosystems

Keywords: soil respiration, litterfall, Q10, RS10, balsam fir, black spruce, soil organic matter turnover, long-term incubation

10 ABSTRACT

The maintenance of the large soil organic carbon (SOC) stocks of the boreal forest under climate change is a matter of concern. In this study, major soil carbon pools and fluxes were assessed in twenty-two closed-canopy forests located along an elevation and latitudinal climatic gradient expanding 4°C in mean annual temperature (MAT) for two important boreal conifer forest stand types: balsam fir (*Abies balsamea*), a fire avoider and black spruce (*Picea mariana*), a fire tolerant species. SOC stocks were not influenced by a warmer climate or by forest type. However, carbon fluxes, including aboveground litterfall rates as well as total soil respiration (R_s), heterotrophic (R_h), and autotrophic soil respiration (R_a) were linearly related to temperature (cumulative degree days >5°C). The sensitivity of SOM degradation to temperature, assessed by comparing Q_{10} (rate of change for a T increase of 10°C) of soil respiration and RS_{10} (soil respiration rates corrected to 10°C) did not vary along the temperature gradient, while the proportion of bioreactive carbon and nitrogen showed higher values for balsam fir and for warmer sites. Balsam fir forests showed a greater litterfall rate, a better litter quality (lower C:N ratio) as well as a higher RS_{10} than black spruce ones, suggesting that their soils cycle a larger amount of C and N under a similar climate regime. Altogether, these results suggest that a warmer climate and a balsam fir forest composition induce a more rapid SOC turnover. Contrary to common soil organic matter stabilization hypotheses, greater litter input rates did not lead to higher total SOC stocks and a warmer climate did not lead to the depletion of bioreactive

Supprimé: climate

Supprimé: climate

Supprimé: across

Supprimé: the climate

Supprimé: labile

Supprimé: SOC

Supprimé: cycling

Supprimé: nor

Supprimé: labile

soil C and N. Positive effects of warming both on fluxes to and from the soil as well as a potential saturation of stabilised SOC could explain these results which apply to the context of this study: a cold and wet environment and a stable vegetation composition

along the temperature gradient. While the entire study area is subject to a humid climate, a negative relationship was found between aridity and SOM stocks in the upper mineral soil layer for black spruce forests, suggesting that water balance is more critical than temperature to maintain SOM stocks.

Supprimé: climate

1. INTRODUCTION

Of all the IPCC (Intergovernmental Panel on Climate Change) climate zones, the humid boreal region contains the largest terrestrial carbon (C) stocks (380Pg). It is also the region where the proportion of carbon contained in the soil is the greatest (Sharlemann et al.

2014). Boreal regions are also experiencing the most intense warming (Hoegh-Guldberg et al. 2018). The consequences for the global climate of losing only a portion of the boreal SOM stocks are potentially disastrous as this could create a highly damaging positive feedback loop in which increasing warming would lead to greater soil C losses (DeLuca & Boisvenue 2012). Recent assessments of global simulation models predicting the fate of soil C in northern regions with global change showed that the model predictions vary greatly between models and that they are prone to large uncertainties (Hunzinger et al. 2020; Wieders et al. 2019). These studies highlighted a great need to better understand the SOM dynamics and its relation to climate and the necessity of empirical observations to guide model development.

Supprimé: should also experience

The use of climatic gradients to understand the impact of climate change on soil C dynamics complements the information generated by soil warming experiments (Crowther et al. 2016; Rustad et al. 2001). If vegetation types and soil conditions are held constant, climatic gradients allow the observation of changes in soil fluxes with climate while avoiding short-term pulse effects that have been observed in manipulative warming experiments which may only be transient (Melillo et al. 2002). They can also be used to observe changes that takes long time to form, including the buildup of stable SOM (Lavallée et al. 2020).

70 Climate gradient studies generally show shorter organic matter turnover times under warmer climate (Tewksbury and Van Miegroet 2007; Ziegler et al. 2017). However, because both C fluxes to and from the soil are accelerated by an increase in temperature, the net effect on soil C accumulation varies when the effect on one flux is greater than on the other. For example, a Finnish thermocline study showed greater accumulation of soil C in warmer climate (Liski and Westman 1997) due to increased productivity, while the opposite was found for the SOM content of the soil organic layers of black spruce forests of Alaska (Kane et al. 2005; [▲]Kane and Vogel 2009) and for both organic and mineral soil layers in continental US (Garten 2012). Other studies have revealed stable SOC stocks along gradients of increased mean annual temperature in the Southern Appalachian [▼]region (Tewksbury and Van Miegroet 2007) and in Newfoundland and Labrador (Ziegler et al. 80 2017). In the latter study, [▼]increased fluxes to the soil at warmer sites were associated with higher C stocks in the organic layer.

A conceptual model of SOM dynamics, the Microbial Efficiency-Matrix Stabilization (MEMS) framework developed in Cotrufo et al. (2013) suggests that a larger inputs of labile plant material leads to larger and more stable SOM stocks. Thus, if warming enhances plant productivity, it could favor the accumulation of larger SOM reservoirs. Stable SOM makes the bulk of SOM. For example, Andrieux et al. (2020) found that only 10% of total SOM could be considered as fast or bioreactive C. To the contrary, [▼]several studies that considered the decomposability of SOM have showed a higher content of 90 bioreactive or poorly stabilized soil C in colder soils (Fissore et al. 2009; Ichikuza et al. 2007; Laganière et al. 2015; Norris et al. 2011) suggesting that cold temperature maintains reservoirs of easily decomposable SOM and consequently that cold soils may be more susceptible to C losses upon warming.

[▼] The interpretation of climate gradient studies is often complicated by changes in vegetation composition and in soil properties. The objective of the present study was to assess changes in SOC stocks, quality and C fluxes to and from the soil along a climatic gradient, while maintaining vegetation composition and soil properties as constant as possible for two important boreal forest types: (1) forests dominated by balsam fir (*Abies balsamea* (L.) 100 Mill.), a fire-avoider that becomes abundant in landscapes with a long fire return interval,

Mis en forme : Non Surlignage

Supprimé:

Supprimé: however,

Supprimé: s

Supprimé: labile

Supprimé: ¶

and (2) forest dominated by black spruce forests (*Picea mariana* (Mill.) B.S.P.), a fire adapted species that nevertheless can persist in the landscape in the absence of fire (Couillard et al. 2018). Wildland fires are projected to increase in number, size and intensity, due to climate-warming and fire frequency could increase by 1.5 to 4 times before 2100 in the Canadian boreal forest (Boulanger et al. 2014), a situation that would likely lead to a reduction in the area covered by balsam fir forests.

We hypothesized that:

- i) Stocks: Balsam fir sites, presumably because they produce greater amounts of litter of higher quality, as well as sites at the warmest end of the gradient should accumulate more stable SOM in line with the Microbial Efficiency-Matrix Stabilization (MEMS) framework developed in Cotrufo et al. (2013), which suggests that a larger inputs of labile plant material leads to larger and more stable SOM stocks. A larger stock of stable SOM should be apparent in total C stocks because it represents the largest share of total SOM (Andrieux et al. 2020).
- ii) Cycling: Warmer sites should exhibit enhanced C cycling to and from the soil.
- iii) SOM bioreactivity: Warm sites should contain less bioreactive SOM because higher microbial activity at high soil temperature leads to its degradation (Laganière et al. 2015). The proportion of bioreactive SOM can be evaluated with the use of long-term incubation. A lower proportion of bioreactive SOM should also be reflected in a higher Q₁₀ for soil respiration rate according to the “C quality-temperature” (CQT) hypothesis (Laganière et al. 2015). Hence, balsam fir sites and warm sites should have greater soil C stocks and higher Q₁₀.

In comparison to other transect studies dealing with SOC dynamics, this study considered two forest types. Forest composition can have major impacts on SOC storage and cycling (Mayer et al. 2020). In addition, studying the impact of climate on SOC within vegetation type is important in the light of studies pointing out that vegetation shifts with climate change were found to be much more modest than expected. This has been related to non climatic factors including seed predation, pathogens and soil related limitations (Brown and Vellend 2014). In fact, land-use change and disturbances were found to have much greater effects on forest composition than climate change (Danneyrolles et al. 2019). These

Supprimé: as

Supprimé: a large

Supprimé: lability

Supprimé: labile

Supprimé: organic matter

Supprimé: low

Supprimé: pr

Supprimé: otects labile SOM (Schmidt et al. 2011)

Supprimé: labile

Supprimé: labile

studies suggest that forest composition show a strong inertia to climate change and hence that it is timely to study the impact of climate change within a vegetation type.

MATERIAL AND METHODS

Twelve balsam fir and ten black spruce sites were selected along a climatic gradient caused both by latitude and by elevation (Table 1; Fig. 1). All sites were mature closed-canopy stands with no signs of recent human or natural disturbances. The climatic gradient extended over a 4°C mean annual temperature difference, which represents MAT temperature increase expected for this region (2011-2080) according to IPCC scenario RCP4.5 (Côté et al. 2014). The study region has a very humid climate with an aridity index comparable to that of the rain forests such as the Pacific Coast Temperate Rainforests of North America or the Amazon (Trabucco & Zomer, 2018). Aridity was assessed using the Penman-Molteith equation calculated daily from May to October over a 30-year period (Table 1). Post-hoc, we found out that temperature (degree-days: DD) and aridity were strongly correlated for balsam fir sites only (R^2 : 0.86; $p < 0.0001$), and that this relationship is not significant for black spruce sites $P=0.26$ (Supplementary material-SM1). For balsam fir, warmer sites are dryer. This relationship does not hold for our black spruce sites because cold sites included both wet (high elevation) and drier sites (high latitude) (Fig. 1). Sites were at least a few km apart from each other and are the same sites as those described in Larocque et al. (2014) with the addition of three sites North of Lac St-Jean that were added to increase the number of cold black spruce sites. These sites were Lac Tirassee (TIR), RESEF (RES) and Eastern old black spruce (EOBS), a flux tower site that was intensively studied during the Fluxnet Canada and the Canadian Carbon program from 2002 to 2011. Only the closed-canopy section of this latter site (plots FCM 17-24) was considered and not the open lichen woodland portions (FCM 36-39) which would have make it too different from other black spruce sites along the climatic sequence. Four black spruce and three balsam fir sites were intensively studied. These sites are marked in bold in Table 1 and 2 (FM, FR, LS, J2, TIR, PR, OEBS). On these sites, root trenching was conducted to distinguish the contribution of autotrophic from that of heterotrophic soil respiration and soil samples were collected for long-term laboratory incubations to determine the proportion of bioreactive soil C. Methods are described below. At each site,

Supprimé: ¶

Supprimé: ¶

Saut de page

¶

Mis en forme : Normal, Sans numérotation ni puces

Mis en forme : Police : (Par défaut) Times New Roman, 12 pt, Couleur de police : Automatique, Anglais (Canada)

Mis en forme : Police : (Par défaut) Times New Roman, 12 pt, Couleur de police : Automatique

Mis en forme : Police : (Par défaut) Times New Roman, 12 pt, Couleur de police : Automatique, Anglais (Canada)

Mis en forme : Police : (Par défaut) Times New Roman, 12 pt, Couleur de police : Automatique

Mis en forme : Police : (Par défaut) Times New Roman, 12 pt, Couleur de police : Automatique, Anglais (Canada)

Mis en forme : Police : (Par défaut) Times New Roman, 12 pt, Couleur de police : Automatique

Mis en forme : Police : (Par défaut) Times New Roman, 12 pt, Couleur de police : Automatique, Anglais (Canada)

Mis en forme : Police : (Par défaut) Times New Roman, 12 pt, Couleur de police : Automatique

Mis en forme : Police : (Par défaut) Times New Roman, 12 pt, Couleur de police : Automatique, Anglais (Canada)

Mis en forme : Police : (Par défaut) Times New Roman, 12 pt, Couleur de police : Automatique

Mis en forme : Police : (Par défaut) Times New Roman, 12 pt, Couleur de police : Automatique

Mis en forme : Police : (Par défaut) Times New Roman, 12 pt, Couleur de police : Automatique, Exposant

Mis en forme : Police : (Par défaut) Times New Roman, 12 pt, Couleur de police : Automatique

Mis en forme : Police : (Par défaut) Times New Roman, 12 pt, Couleur de police : Automatique, Anglais (Canada)

Mis en forme : Police : (Par défaut) Times New Roman, 12 pt, Couleur de police : Automatique

Mis en forme : Police : (Par défaut) Times New Roman, 12 pt, Couleur de police : Automatique

Mis en forme : Police : (Par défaut) Times New Roman, 12 pt, Couleur de police : Automatique, Anglais (Canada)

Mis en forme : Police : (Par défaut) Times New Roman, 12 pt, Couleur de police : Automatique

Mis en forme : Police : (Par défaut) Times New Roman, 12 pt, Couleur de police : Automatique, Anglais (Canada)

Mis en forme : Police : (Par défaut) Times New Roman, 12 pt, Couleur de police : Automatique

Mis en forme : Police : (Par défaut) Times New Roman, 12 pt, Couleur de police : Automatique

Mis en forme : Police : (Par défaut) Times New Roman, 12 pt, Couleur de police : Automatique

Mis en forme : Police : (Par défaut) Times New Roman, 12 pt, Couleur de police : Automatique

Mis en forme : Police : (Par défaut) Times New Roman, 12 pt, Couleur de police : Automatique

Mis en forme : Police : (Par défaut) Times New Roman, 12 pt, Couleur de police : Automatique

Mis en forme : Police : (Par défaut) Times New Roman, 12 pt, Couleur de police : Automatique

Mis en forme : Police : (Par défaut) Times New Roman, 12 pt, Couleur de police : Automatique

Mis en forme : Police : (Par défaut) Times New Roman, 12 pt, Couleur de police : Automatique

Mis en forme : Police : (Par défaut) Times New Roman, 12 pt, Couleur de police : Automatique

Mis en forme : Police : (Par défaut) Times New Roman, 12 pt, Couleur de police : Automatique

Mis en forme : Police : (Par défaut) Times New Roman, 12 pt, Couleur de police : Automatique

Supprimé: (labile)

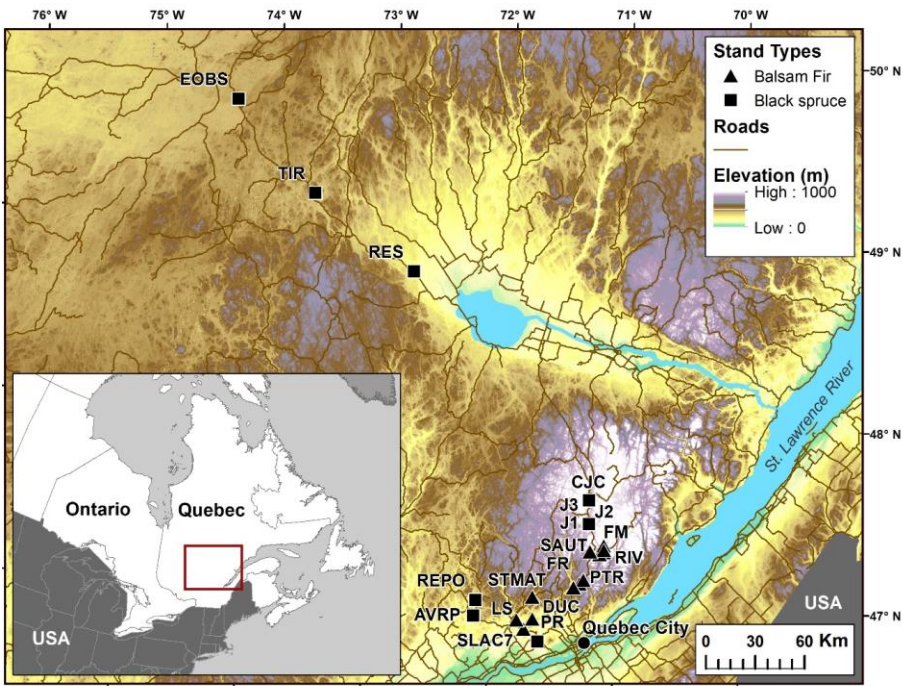
five 2 m x 2m sample plots where located on the perimeter of a 400 m² circular plot where forest tree mensuration measurements were conducted (see Larocque et al. 2014). In addition, on the seven intensive sites, five 2 m x 1 m root trenching plots (Tr) were installed, paired with each control plots. Field fluxes were measured during the snow free period for five years 2002-2006 at monthly interval during the snow free period, from early May to late October.

Table 1. Site characteristics

Site	Climate	Age (yr)	B.A. (m ² ha ⁻¹)	Soil type	Sa, Si and Cl (%)	MAT (°C)	Degree-days >5°C	MAP (mm)	Aridity
Balsam fir sites									
FM	Cold	70	44.6	HF-P	69, 20, 11SL	-1.0	856	1631	0.73
RIVM	Cold	60	49.6	HF-P	62, 29, 8SL	-0.1	953	1579	0.78
RIVN1	Cold	50	45.4	HF-P	72, 22, 6SL	-0.5	903	1589	0.74
RIVN2	Cold	50	56.5	HF-P	72, 22, 6SL	-0.1	954	1566	0.76
SAUT	Cold	50	46.1	HF-P	69, 22, 9SL	-0.7	874	1634	0.73
FR	Mild	75	31.2	H-P	75, 21, 4SL	0.9	1109	1518	0.80
KM82	Mild	53	45.9	HF-P	75, 17, 8SL	0.9	1101	1514	0.80
PTR	Mild	42	44.7	FH-P	66, 28, 6SL	2.0	1287	1448	0.90
LS	Warm	50	47.7	HF-P	70, 20, 10SL	3.3	1536	1344	0.94
STMAT	Warm	50	38.9	HF-P	79, 18, 3LFS	3.3	1523	1407	0.89
SLAC7	Warm	45	33.6	HF-P	39, 52, 9SiL	2.5	1395	1422	0.81
DUC-2	Warm	62	35.1	HF-P	47, 39, 14L	3.3	1536	1367	0.94
Black spruce sites									
J1	Cold	70	36.3	FH-P	43, 52, 5SiL	-0.6	904	1588	0.76
J2	Cold	65	45.7	FH-P	74, 16, 10SL	-0.6	904	1588	0.76
J3	Cold	70	37.6	FH-P	66, 34, 0SL	-0.6	904	1588	0.76
CJC	Cold	103	45.5	H-P	67, 29, 4SL	-0.5	926	1540	0.78
TIR	Mild	84	32.7	HF-P	84, 13, 3 S	-0.1	1139	1042	1.30
EOBS	Mild	120	17.2	FH-P	68, 28, 4SL	-0.3	1195	961	1.14
RES	Mild	82	34.2	HF-P	76, 20, 4LS	0.8	1298	954	1.32
AVRP	Warm	48	32.1	HF-P	77, 15, 8SL	3.0	1524	1229	0.97
REPO	Warm	46	44.3	FH-P	70, 26, 4SL	3.0	1525	1199	0.82
PR	Warm	50	23.2	HF-P	62, 29, 9SL	3.6	1601	1293	1.03

Note: Temperature, precipitation and aridity were estimated daily over a 30-year period using BioSIM (Régnière Saint-Amant, 2008). Aridity was estimated from May to October. B.A.: basal area; Sa, Si, Cl: sand, silt and Clay respectively; Humo-Ferric Podzol (HF-P); Ferro-Humic Podzol (FH-P) or Humic Podzol (H-P); Textural class: Loam (SL), Loamy fine Sand (LFS), Silty Loam (SiL), Loam (L) Podzol (H-P). MAT: mean annual temperature, MAP: mean annual precipitation.

Fig. 1. Location of the study sites showing how the temperature gradient is related to elevation and latitude. Data from Abrams et al. (2020).



Supprimé: climate

2.1 Soil C pools

At each sample plot (5 per site), three volumetric soil samples of the organic layer (FH layers) were sampled using a 400 cm² template and three samples of the top 0-20 cm mineral soil layer were sampled with a 4.70 cm diameter corer. We discarded the loose portion of the top litter because it is short lasting and varies during the season. It represented a very small portion of the O layer. This generated 15 soil samples per layer and site. In addition, one 20-40 cm volumetric mineral soil sample was taken per sample plot. The exact depth of the sampling was noted in the cases when it was not possible to sample to these depth because of rocks. Samples were kept in a cold room at 3°C until being processed. Then they were oven dried at 70°C and sieved at 2mm to remove roots

Supprimé: five

Supprimé: five

Supprimé: 25

and coarse fragments. They were then weighted and C content was determined by dry combustion using a LECO CNS-2000 analyzer (Leco Corp., St. Joseph, MI, USA).

2.2 Litterfall

Eight square littertraps (2862 cm²) were installed on each site. Litterfall was collected at least twice a year during three years. Litterfall per trap was divided by the number of days for the full sampling period and then multiplied by 365 to get annual estimates. Samples were kept at 3°C, before being sorted to distinguish foliar material from other fine material (small branches, mosses, insects, insect frass, cones, flowers and unknown materials) dried at 70°C. They were ground on a Wiley-mill and analysed for C and nitrogen (N) content as above.

2.3 Soil respiration *in situ*

In each sample plot, both in control and trenched plots, two 5 cm deep polyvinyl chloride (PVC) collars measuring 10 cm in diameter were inserted into the soil at a 1m distance from each other (10 collars per site) to measure total soil respiration (R_s). On the seven intensive sites, trenches were dug to a depth of approximately 30cm on a 2 x 1m area near each sample plot to sever roots. Trenches were lined with landscaping fabric and backfilled. Herbs and shrubs were removed from trenched plots periodically. Two PVC collars were installed in each plot to measure heterotrophic soil respiration (R_h). Installation was conducted in June and measurements started the following year to let the severed roots decompose and avoid a method-induced CO₂ peak. CO₂ efflux measurements were performed once a month from early May to mid-late-October. They were measured by placing the soil chamber (LI-6400-09) of a portable infrared gas analyzer (LI-6400, LI-COR Inc., Lincoln, NE) above the collar. During soil CO₂ efflux measurements, soil temperature at a depth of 10 to 15 cm was recorded as well as soil moisture (i.e. volumetric water content, % v/v) using a TDR-300 time domain reflectometry moisture probe (Spectrum Technologies Inc., Plainfield, IL). This relatively shallow depth was chosen because soil temperature at this depth fluctuates daily along the growing season. Soil temperature was measured continuously on the intensive sites with thermocouple wires attached to a Campbell Scientific data station, while WatchDog 100 Series Water Resistant Button Loggers were installed on the other sites. As detailed in

Table 5, 5093 CO₂ efflux soil collar measurements were performed on control plots and 2661 on trenched plot over the duration of the study. Measurements were performed over 4 years for most sites; three sites were sampled for only 3 years, and one site for two years at a rate of five to six measurement days per year (details in Table 5). Several parameters were derived from the respiration vs temperature relationship. The relationship of soil CO₂ efflux vs temperature was parametrized with a simple exponential equation (Buchmann 2000):

[Eq.1]:
$$Rs = a e^{(b(T_s - 10))}$$

Where:

Rs is soil respiration in $\mu\text{moles C m}^{-2} \text{ s}^{-1}$;

a and b are coefficients and T_s is soil temperature in $^{\circ}\text{C}$ at a depth of 10-15cm.

$b1$ is the estimate of respiration at 10°C or R_{s10}

Q_{10} expresses the rate of change of Rs with a temperature change of 10°C . It can be calculated from b :

[Eq.2]:
$$Q_{10} = e^{(10 \cdot b)}$$

The parameters of the equations were estimated for each site using all measurements from all years. We combined all the measurements per site because we noted that the fit was better when the range in soil temperatures used was wider and because we noted the trends were comparable between years.

2.4 Assessing annual soil respiration fluxes

We estimated soil respiration from May 1st to October 31st (183 d) period. At the first measurement period, soil temperature was close to 0°C and at the last measurements; it varied from 2 to 4.5°C depending on local climate. This period is close to the snow free period. Ecosystem respiration during the snow-covered period has been estimated at about 10% of total ecosystem respiration for one of our site (Bergeron et al. 2007). The methodologies outlined in Lavigne et al. (2003) were used to scale CO₂ efflux over the year

Supprimé: $b1$

Supprimé: 2

Supprimé: $b1$

Supprimé: 2

Mis en forme : Exposant

Mis en forme : Indice

Mis en forme : Exposant

Supprimé: Q_{10} , the rate of change:

Supprimé: RS_{10} , the soil respiration at 10°C is

[Eq.3]: $Rs = RS_{10} \cdot b1 \cdot Q_{10}^{(T_s - 10)}$

(183 d) and to derive CO₂ effluxes between measurement dates and for a few days at the end or beginning of the season. A full description of this method and its rationale is presented in Lavigne et al. (2003). This method accounts for seasonal trends in Rs that are not related to temperature change. For example, changes that may be due to a seasonal flush of labile C with fine root development or with fresh litter fall inputs. Briefly, a RS₁₀ value was calculated for each site and measurement date assuming a Q₁₀ value of 2. This value was chosen because most model use this value (Meyer et al. 2018) and because we have no knowledge if the Q₁₀ value that was estimated for the whole growing season is appropriate for specific periods within the season. A RS₁₀ value was then linearly interpolated for each calendar day between each measurement day. This daily RS₁₀ value was used, together with the recorded soil temperature at 10-15cm depth, to estimate daily soil respiration per site with equation 3. This equation converts the units from μmol CO₂.s⁻¹.m⁻² into kg C per ha per day assuming a Q₁₀ of 2. Daily measurements were summed from May 1st to October 31th to obtain yearly estimates of Rs.

Supprimé: as discussed in Lavigne et al. (2003)

Supprimé: 4

Supprimé: .

[Eq 3]: $Rs = RS_{10} * 2.7183^{(0.0693 * (Ts - 10))} * 3600 * 24 * 12 * 10^{-5}$

Supprimé: 4

Supprimé: 7

We compared the results from this calculation method with one using Q₁₀ values that varies with site but that were the same for the whole season for the intensively studied sites. The overall difference between the two methods varied between sites and was of only 1% on average in yearly soil respiration (more details provided in SM2)

Mis en forme : Indice

Mis en forme : Anglais (Canada)

2.5 Partitioning into heterotrophic and autotrophic respiration

On the intensive sites, the same calculation as above was performed for the trenched plots to obtain an annual soil efflux per site for the trenched plot. The same parameters were fitted using Eq 1 to 3. The parameters derived from these equations were analysed and discussed. However, because the values were higher than those generally reported in the literature (Rh averaged 77% of Rs) although close to the values reported by Lavigne et al. (2003) for cold sites, we suspected that the trenching was incomplete. We therefore used the often-used (Naidu & Bagchi 2021) relationship of Bond-Lamberty et al. (2004):

[Eq.4]: $\ln(R_h) = 1.22 + 0.73 \ln(R_s)$

Supprimé: 5

Where R (h or s) is respiration in $\text{g C m}^{-2} \text{ year}^{-1}$. This value was subtracted from R_s to estimate R_a , autotrophic respiration.

2.6 Lab incubation

For the microcosm experiment, soil samples from four of the five plots per site were pooled by depth to yield composite samples for four intensively studied sites (Mild-Fir: FR; Warm-fir: LS; Cold-Spruce: J2 ; Warm-Spruce: PR; see Table 1 for site codes).

390 Organic and mineral layer samples, 6- and 40-g dry weight, respectively, were placed on a layer of glass wool in 120 mL plastic containers (28 cm^2 surface area), wetted at field capacity and placed in 500 mL glass jars (Mason type). These microcosms were left to stabilize for one week at 2°C after handling and were then incubated in the laboratory at 3, 10, 15 and 22°C at field capacity for 354 days. These temperatures were chosen to cover the range of soil temperatures that decomposers would experience in the field. Soil respiration rates were measured monthly during periods of 4 to 24h during which the lid was closed. The length of these periods depended on rates and CO_2 evolution in order to keep concentrations within the calibration range of the IRGA, a LI-6400 portable photosynthesis system (LI-COR, Lincoln, NE, USA). The methodology used is described in Andrieux et al. (2020). At each measurement period, samples were flushed with distilled water and $\text{NO}_3\text{-N}$ and $\text{NH}_4\text{-N}$ were analyzed by FIA (Quickchem 8500, Lachat Instruments, Loveland, Colorado). Flushing maintains the soil humid and prevents the accumulation of metabolic products that may interfere with the decomposition process. Using linear interpolation between measurement dates, the total amount of C and N mineralized during the full incubation was estimated and considered as bioreactive C or N.

Supprimé: over

Supprimé: intervals

Supprimé: ing

Mis en forme : Indice

Supprimé: was measured on

Supprimé: using the

400 in Andrieux et al. (2020). At each measurement period, samples were flushed with distilled water and $\text{NO}_3\text{-N}$ and $\text{NH}_4\text{-N}$ were analyzed by FIA (Quickchem 8500, Lachat Instruments, Loveland, Colorado). Flushing maintains the soil humid and prevents the accumulation of metabolic products that may interfere with the decomposition process. Using linear interpolation between measurement dates, the total amount of C and N mineralized during the full incubation was estimated and considered as bioreactive C or N.

Supprimé: labile

Supprimé: labile

2.7 Statistical analysis

The effects of DD, species and their interaction on the dependant variables (soil carbon pools and fluxes as well as soil respiration parameters (R_{s10} , Q_{10}) and litterfall properties) were tested using proc GLM (SAS 2013). DD being a continuous variable and species a categorical one. Sites are considered as the experimental units. For laboratory incubation,

Supprimé: climate (

Supprimé:)

410

the effects of incubation temperature, climate, and species were tested using linear regression models fitted separately on each soil layer. Due to the small sample size, interactions between independent variables could not be evaluated. Effects were considered significant at the 0.05 threshold level.

3. RESULTS

3.1 Soil carbon stocks

Soil C stocks varied widely among sites, ranging from 108 to 202 C t.ha⁻¹ for fir sites and from 76 to 310 t.ha⁻¹ for spruce sites (Table 2). This variability could not be attributed to species, DDS or their intereaction (Table 2). On balsam fir sites, the organic layer contained an average of 25% of estimated soil C stocks, while this proportion was 37% on spruce sites. Excluding the two sites where the 20-40 cm layer could not be sampled, the latter value falls to 33% and is thus close to that found for the balsam fir sites. No significant effects of tree species, DD and their interaction on soil C stocks were found in either OL or the top 0-20cm mineral soil layer (Table 3; Fig. 2a).

430

Supprimé: This variability could not be attributed to a single factor. The only site with particle size distribution classifying it as a sand, TIR, had a low C stock, but other sites that were not as sandy, also showed low C content (Tables 1 & 2).

Supprimé: humus

Supprimé: climate

Supprimé: These results are for the organic layer (FH) and the top 0-20cm mineral soil layer.

Table 2. Soil carbon stock (t C ha⁻¹) mean and coefficient of variation (CV) for the study sites. O.L. stands for organic layer (FH) and 0-20 cm and 20-40cm for the soil depth increments of mineral soil samples. *CWD: Coarse woody debris. Total C: total of all listed pools.

Site ID	Species	Climate	O.L.		0-20 cm		20-40 cm		CWD*		Total C	
		regime	mean	CV	mean	CV	mean	CV	mean	CV	mean	CV
Balsam fir sites												
FM	BF	Cold	27.6	0.19	40.7	0.26	33.8	0.16	5.5	0.28	107.6	0.21
RIVM	BF	Cold	30.6	0.30	64.6	0.27	44.9	0.26	4.4	0.85	144.5	0.29
RIVN1	BF	Cold	23.5	0.20	63.5	0.33	57.7	0.18	10.0	0.78	154.6	0.28
RIVN2	BF	Cold	44.8	0.45	55.9	0.35	39.0	0.58	12.3	1.31	152.1	0.52
SAUT	BF	Cold	40.3	0.35	73.1	0.31	43.4	0.14	7.6	0.50	164.4	0.28
FR	BF	Mild	53.3	0.27	84.9	0.23	52.4	0.26	11.2	0.64	201.7	0.27
KM82	BF	Mild	40.7	0.38	71.5	0.31	47.9	0.13	9.1	0.71	169.2	0.30
PTR	BF	Mild	37.7	0.50	50.2	0.63	30.3	0.13	4.8	0.57	122.9	0.46
LS	BF	Warm	37.6	0.21	68.5	0.22	47.7	0.17	15.0	0.98	168.8	0.27
STMAT	BF	Warm	50.0	0.36	48.8	0.42	45.6	0.18	3.4	0.74	147.8	0.33
SLAC7	BF	Warm	32.7	0.57	68.3	0.30	41.8	0.24	4.6	1.58	147.3	0.38
DUC-2	BF	Warm	49.1	0.43	60.7	0.37	54.6	0.20	6.6	1.06	171.0	0.36
Black spruce sites												
J1	BS	Cold	33.0	0.32	42.9	1.05	n.a	n.a	0.1	1.19	76.1	0.73
J2	BS	Cold	51.2	0.18	84.0	0.38	41.9	0.61	3.9	0.87	181.0	0.39
J3	BS	Cold	57.1	0.33	78.4	0.50	124.7	0.49	2.5	0.43	262.7	0.46
CJC	BS	Cold	100.5	0.26	66.6	0.59	96.6	0.96	11.9	0.78	275.7	0.61
TIR	BS	Mild	39.5	0.25	42.4	0.30	n.a	n.a	n.a	n.a	81.9	0.28
EOBS	BS	Mild	63.6	0.35	17.1	0.5	24.7	0.64	n.a	n.a	105.4	0.45
RES	BS	Mild	89.8	0.50	52.1	0.29	n.a	n.a	n.a	n.a	141.9	0.43
AVRP	BS	Warm	18.1	0.54	74.3	0.50	25.4	0.75	9.5	1.29	127.2	0.61
REPO	BS	Warm	121.3	0.34	60.4	0.61	119.0	0.75	9.3	0.50	310.0	0.56
PR	BS	Warm	30.5	0.19	65.7	0.14	21.7	0.26	12.1	0.49	130.1	0.21

Table 3. Results of statistical analyses (p values) from a GLM testing for forest type (tree species), degree-days (DD) and their interaction for C fluxes, soil C pools and estimated parameters from the *in situ* soil respiration - soil temperature relationships.

Response				
variables	description	tree species	DD	interaction
FH-TotC	C mass of the FH layer (t C ha ⁻¹)	0.1061	0.7854	0.5984
Soil-TotC	C mass of the soil down to 20cm (t C ha ⁻¹)	0.6495	0.9281	0.9770
FolLit	Annual foliar litter (kg C ha ⁻¹ yr ⁻¹)	<0.0001	0.0013	0.5830
Lit	Annual litter (kg C ha ⁻¹ yr ⁻¹)	0.0014	0.0066	0.7020
Lit C :N	Foliar litter C:N (unitless)	0.0003	0.3807	0.2906
Rs (183days)	Soil respiration (kg C ha ⁻¹ yr ⁻¹)	0.4390	0.0001	0.1383
Rs ₁₀	Respiration at 10°C (μmol m ⁻² s ⁻¹)	0.0472	0.9266	0.0590
Q ₁₀	Change in respiration rates (unitless)	0.2347	0.8892	0.8976

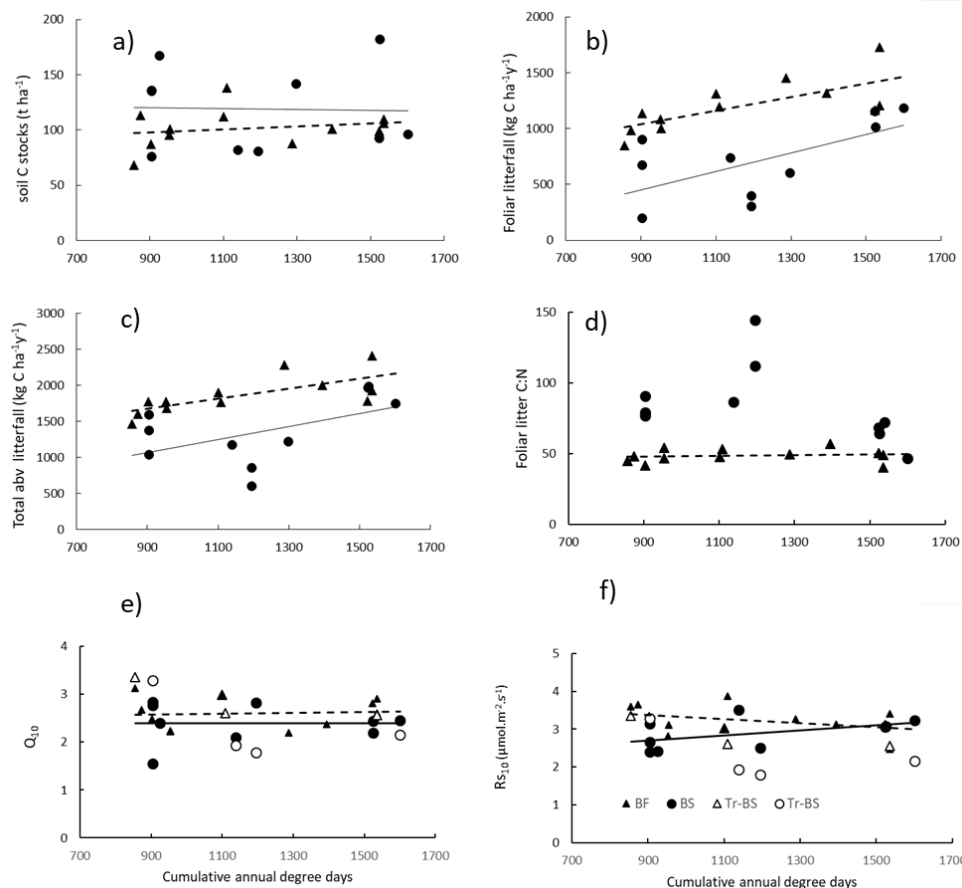


Fig. 2. Relationships between degree-days (DD) and (a) Soil carbon stocks (O.L. + top 0-20 cm mineral soil) (b), soil annual foliar litterfall, (c) total annual aboveground litterfall, (d) foliar litter C:N ratio, (e) Q_{10} and (f) RS_{10} derived from field soil respiration measurements. Only the relationships with litterfall (b,c) were significant (see table 3). Legend: Triangles with dotted lines are for fir stands and circles with bold lines for spruce stands; BS stands for black spruce and BF for balsam fir; Tr stands for trenched plots and are identified by open symbols.

Supprimé: humus

Supprimé:

Supprimé: (e)

Supprimé: (f)

Supprimé: , as related to forest composition and cumulative annual degree-days (DD).

Supprimé:

Supprimé: for DD effects

3.2 Carbon fluxes to and from the soil

Aboveground litterfall was linearly related to DD as well as to tree species, but the interaction of these two factors was not significant (Table 3; Fig. 2b, c), indicating that the slope of litterfall with degree-days did not differ between the two forest types. On average, fir forests produced 71% more foliar litter and 37% more total litter than black spruce ones. The N concentration of foliar litter was higher for balsam fir than for black spruce and this is reflected in lower C:N values for the former (Table 3; Fig.2d). This variable was remarkably stable for balsam fir across the temperature gradient, while it showed greater variability for black spruce but no trend with DD (Fig. 2d).

Cumulative soil respiration from May 1st to October 31st was linearly related to DD and was not significantly affected by tree species (Table 3, Fig. 3, SM1). Autotrophic, heterotrophic and total soil respiration rates were strongly and linearly related to degree-days (Fig.3). The slope of autotrophic respiration with DD was greater than that of heterotrophic respiration (SM3), although this difference was not significant at the 5% threshold ($p=0.0832$), suggesting that a higher share of autotrophic respiration to total soil respiration for warm sites as observed by Lavigne et al. (2003). For two of the coldest sites, the values obtained from trenched plots (indicated by stars in Fig. 3) were similar to the value estimated with the Bond Lamberty et al. (2004) equation. However, the field values obtained for the warm sites were much higher than the modeled values. This could indicate that the trenching of the warm sites was incomplete.

Supprimé: degree-days

Supprimé: climate

Supprimé: climate

Supprimé: degree-days

Supprimé: Table

Supprimé: degree-days

Supprimé: Table 1

Supprimé: results not presented;

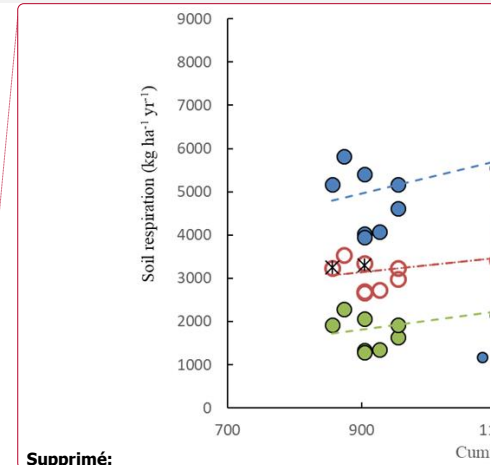
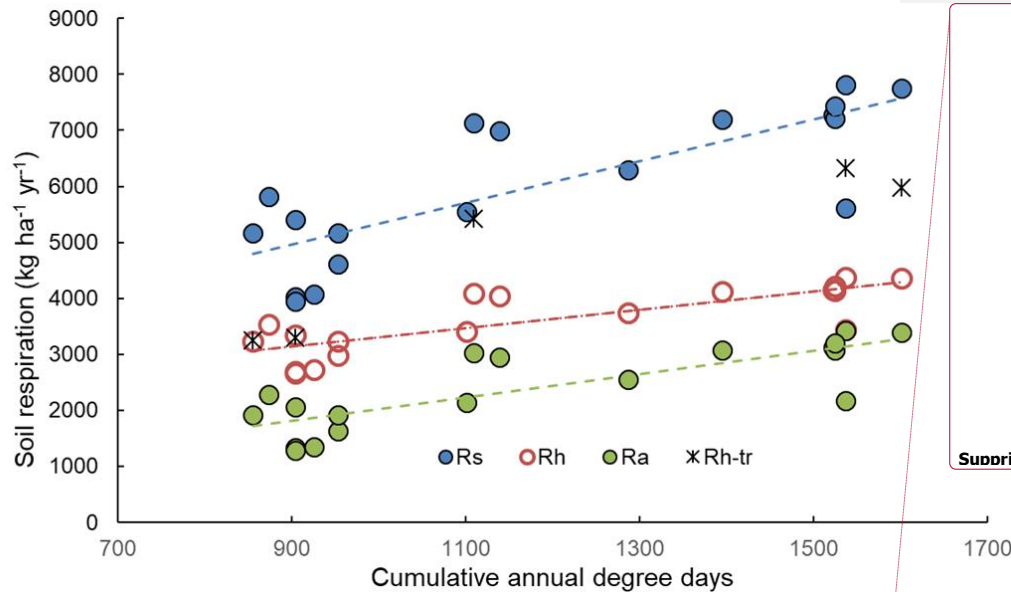


Fig.3. Seasonal soil respiration (183 days: May 1st- October 31st) with cumulative degree days for Rs (total soil respiration), Rh (heterotrophic soil respiration) and Ra (autotrophic soil respiration); stars indicates heterotrophic respiration assessed for trenched plots. Rh and Ra are otherwise calculated using the equation of Bond-Lamberty et al. 2004. All slopes are significant at the 0.001 level. More information in SM3.

3.3 Reactivity of SOM to temperature and tree species

Soil respiration measured *in situ* was dependant on soil temperature but the fit of the Q_{10} relationships varied greatly between sites. R^2 values ranged from 0.17 to 0.62 and averaged 0.43. The Q_{10} values ranged from 1.55 to 3.12 and averaged 2.51. Rs_{10} varied from 2.41 to 3.87 and averaged $3.09 \mu\text{mol.m}^2.\text{s}^{-1}$ (SM4). The effect of DD on both Q_{10} and Rs_{10} was not significant (Table 3; Fig 2e,f). This indicates that colder sites did not show a greater reactivity of soil respiration to temperature and that at a similar temperature, cold sites would not show a greater soil respiration than warm soils. Rs_{10} was significantly affected by tree species while the interaction with DD was not significant (Table 3). These results suggest that balsam fir soils would show a greater soil respiration rate than black spruce ones under a similar climate. On trenched plots, the values of Rs_{10} ranged from 1.94 to 3.36

Supprimé: Table 1

Supprimé: Table 2

Supprimé: climate (

Supprimé: degree-days)

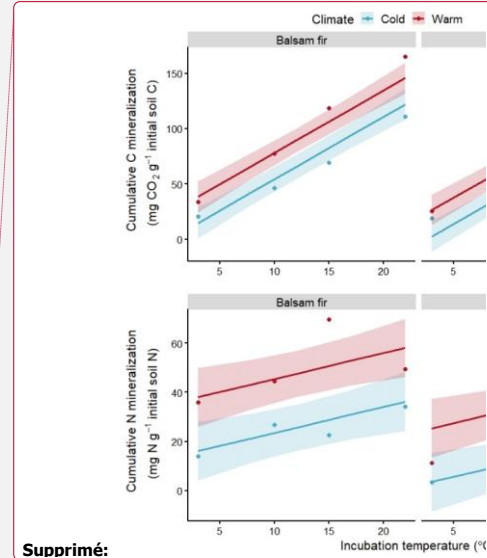
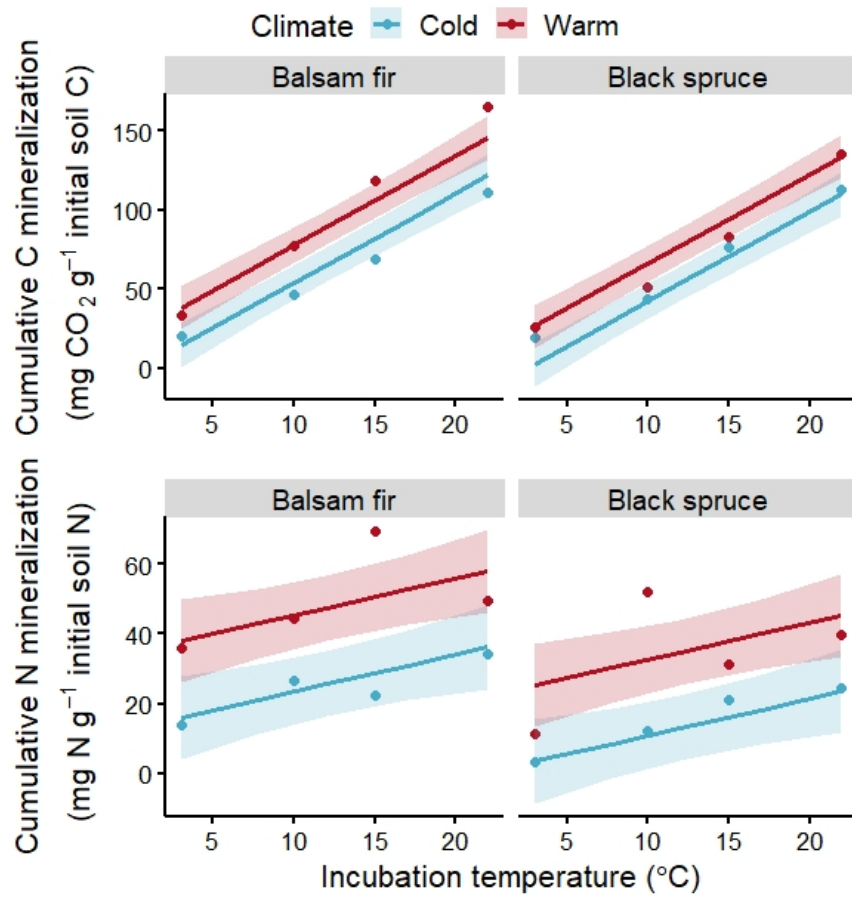
Supprimé: ones

Supprimé: climate

and averaged 2.53 and were, as expected, systematically lower as compared to their respective control plots (Table 3 Fig,2 f: empty symbols). The Q₁₀ values of trenched plots ranged from 1.55 to 3.12 and averaged 2.51 across sites and were not systematically lower nor higher than the values of their respective control plots (Table 3 Fig,2 e).

Laboratory incubation indicated a higher proportion of bioreactive C and N in the organic layer than in the mineral soil (SM3). Incubation temperature had an overall significant effect for both soil layers and elements (Fig.4, SM5). The effects of DD and species on bioreactive C and N were only significant in the OL (SM5). Warm and balsam fir sites showing consistently higher N and C mineralization rates (Fig. 4). This effect was significant at the 0.05 threshold for N but barely missed that mark (p=0.06) for species effect on C mineralisation (SM5).

- Supprimé: labile
- Supprimé: humus
- Supprimé: Table3
- Supprimé: Climate
- Supprimé: had an effect only for the organic layer
- Supprimé: Table 3
- Supprimé: ed
- Supprimé: Table 3



Supprimé:

Fig. 4 Fitted relationships for organic layer cumulative soil CO₂-C and N mineralization with incubation temperature, site climate (warm vs. cold) and tree species (balsam fir vs. black spruce). Red colour identifies warm sites and blue colour cold sites, with points showing observed values. Shaded areas indicate 95% confidence intervals.

Supprimé: in the organic layer

4. DISCUSSION

4.1 Soil Carbon stocks

No significant changes in SOC stocks along the climate gradient were found and we refute hypothesis i. Our result do not give support to the MEMS framework (Cotrufo et al 2013).

A warmer climate increases litterfall inputs as well as soil respiration rates without causing a net effect on C stocks. However, we must be cautious with this interpretation because soil C stocks estimates have a high level of uncertainty, and it is not possible, given our sampling effort, to detect small changes (Yanai et al. 2003). Climate gradient studies in the boreal region have shown that warmer conditions can increase (Liski, & Westman, 1997), have no effect (Ziegler et al. 2017) or lower soil carbon stocks (Norris et al. 2011, Kane & Vogel 2009) despite a higher productivity. These latter two studies were conducted in regions with a much drier climate than the one of this study and of that of the other studies cited above. This suggests that a negative effect of climate warming on SOM stocks appears above a certain threshold of aridity. When heat coincides with drought, which is more likely in drier climates, these events strongly reduce gross primary production (GPP) but yield smaller reduction in ecosystem respiration, leading to strong reduction in net ecosystem productivity (NEP) (Von Buttlar et al. 2018).

We tested the relationship between aridity and SOM stocks (SM6). No relationship was found for the organic layer. However, we found a negative relationship between aridity and SOM stocks in the upper mineral soil for all species combined ($R^2=0.29$; $p: 0.015$) and a stronger relationship for black spruce sites ($R^2=0.44$; $p: 0.03$), but no significant relationship for balsam fir (SM6). Because aridity is not related to temperature along our black spruce site gradient, these results indicate that aridity may have a more important role to play in maintaining boreal SOC stocks than temperature. The influence of these two factors may often be confounded in climate gradient studies.

Under the cold and wet conditions at our sites, microbial decomposition as well as plant productivity are strongly temperature-limited and greater litter inputs due to warmer

Supprimé: in

Supprimé: This

Supprimé: latter study

Supprimé: as

Supprimé: in jack pine forests of central Canada, a

Supprimé: region that has

Déplacé (insertion) [2]

Mis en forme : Exposant

Mis en forme : Exposant

Supprimé: .

Déplacé vers le haut [2]: When heat coincides with drought, which is more likely in drier climates, these events strongly reduce gross primary production (GPP) but yield smaller reduction in ecosystem respiration, leading to strong reduction in net ecosystem productivity (NEP) (Von Buttlar et al. 2018).

Supprimé: However, u

600 conditions are likely offset by a greater microbial decomposition. In addition, our study area does not appear to suffer from water deficit and tree growth is not sensitive to summer soil moisture (Girardin et al. 2021). Furthermore, the size of the SOM stock is not only controlled by climate or net primary production (NPP) but is also influenced by soil types and drainage (Andrieux et al. 2018, Dalsgaard et al. 2016). While we tried to maintain these conditions as constant as possible in our site selection, they may still play an important control on soil C stocks overriding that of C fluxes (Dalsgaard et al. 2016). We were not able to explain the large variability in soil C stocks across sites. This property is highly variable at small scale and has notoriously been difficult to map (Paré et al. 2021). A much larger dataset would be required to test for the effect of environmental factors on soil C storage and should include gradients of texture, drainage, vegetation composition and climate including aridity with as much as possible independence between driving variables.

620 4.2 Carbon fluxes in relation to forest type and a warmer climate

Carbon fluxes to and from the soil were all linearly related to the cumulated degree-days in agreement with hypothesis ii. Litterfall rates was the only parameter that also showed a clear species effect. This may be due to the fact that fir trees do not keep their needles for as long as black spruce; respectively about 5 years (Fleming & Piene 1992) compared to 5 to 30 years (Grossnickle 2000). Both species also showed a stable litter C:N ratio along the climate gradient, suggesting that the stoichiometry of C to N is not affected by climate. The difference in litter C:N ratio between species is not surprising because black spruce typically show lower foliar N concentration than balsam fir (Paré et al. 2013). Despite this difference for N, and perhaps greater N limitation in black spruce forests, the C litterfall rate of both species reacted positively and with the same slope to a warmer climate. Litterfall has been found to be a good predictor of net primary production (Mahi et al. 2011). Our results thus suggest an enhanced tree productivity under warmer conditions. This result contrasts with those of Larocque et al. (2014) conducted on approximatively the same sites, which did not show any significant differences in radial tree growth along the climate gradient. This lack of effect could be explained by the fact that the forest stands were mature, at a stage where growth is slow. D'Orangeville et al. (2016) using a much

Mis en forme : Anglais (Canada)

Supprimé : ¶
Our warmer sites generally had lower precipitation (Table 1). However, soil moisture measured during CO₂ efflux measurements did not show consistent difference across the gradient (data not shown).

Mis en forme : Surlignage

Supprimé : T

Supprimé : and is strongly

Commenté [PD1]: Fleming RA, Piene H (1992b) Spruce budworm defoliation and growth loss in young balsam fir: cohort models of needles schedules for spaced trees. For Sci 38:678–694
(

Supprimé : 4 to 5

Supprimé : years

Supprimé : a maximum of

Commenté [PD2]: Steven C. Grossnickle, S.C. 2000. Ecophysiology of Northern Spruce Species: The Performance of Planted Seedlings. ISBN: 978-0-660-17959-9 • 407 pages Publisher: NRC Research Press doi.org/10.1139/9780660179599

Supprimé : 10

640 larger dataset did observe a positive effect of warming on tree growth in Quebec for both balsam fir and black spruce. They predicted that enhanced tree growth would be observed for an increase of 4°C even without a change in precipitation for black spruce but would require a 15% increase in precipitation for balsam fir. Interestingly, we found a positive relationship between aridity and balsam fir litterfall and with total soil respiration for all species (SM6). Although a strong correlation between aridity and DD for balsam fir precludes disentangling the driving factors, the enhanced fluxes with warming suggests that water limitation is not an important driver of tree productivity and soil respiration in this wet climate.

650 The linear trends that we observed between carbon fluxes and temperature using a relatively small number of sites indicate that the assessment of biogeochemical fluxes, including soil respiration measurements or foliar litterfall may be more suited to study changes in NPP than the often-used tree ring analysis. These fluxes are less affected by stand maturity and are more directly connected to carbon capture by photosynthesis than stemwood biomass, which only represents from 10 to 30% of photosynthate allocation and depends on many physiological processes including allocation to below and aboveground parts, reproduction, defense and energy storage (Litton et al. 2007). Our results showed clear and linear trends with warming for litterfall and soil respiration, while tree ring analysis have shown divergent results in the Canadian boreal forest (e.g. Girardin et al. 660 2016 vs Hember et al. 2019).

Increased litterfall rate with a warmer climate was accompanied by a linear and positive response of soil respiration indicating a greater turnover rate of SOC as the climate warms. These results are coherent with the observations of Ziegler et al. (2017) for a climatic gradient in balsam fir forests in Newfoundland and Labrador and suggest that soil C stocks can be maintained despite a greater turnover rate. These results are in line with an acceleration of C turnover rate observed at the global scale over the recent decades (Carvalhais et al. 2014). Interestingly, the maintenance of SOC pools despite a faster turnover, have also been observed for a tropical mountain climatic gradient (Giardina et al. 2014) suggesting that within a biome where water limitation to forest production is of

Supprimé: climate

Supprimé: soil C

Supprimé: congruent results, that is to say

Supprimé: soil

minor importance, the same pattern of accelerated C cycling and maintenance of pools may occur.

4.3 **Bioreactive** SOM in relation to a warmer climate

Several studies have concluded that a warmer climate would lead to a depletion of **bioreactive** or poorly stabilized SOC (Fissore et al. 2009; Ichikuza et al. 2007; Laganière et al. 2015; Norris et al. 2011). Our results indicated to the contrary, that the **bioavailability** of SOC is either similar or higher with a warmer climate. Field results revealed that Q_{10} and Rs_{10} were stable along the climate gradient, while results from the laboratory incubation, indicated a greater proportion **bioreactive** C and N for balsam fir and for warmer climate but only for the O layer. Both results support the rejection of hypothesis iii. The stability of Rs_{10} along the climate gradient suggests that **bioreactive SOM** does not accumulate more **in** cold than **in** warm soils. The higher Rs_{10} values found for balsam fir soils, irrespectively of climate, are congruent with the greater litterfall rates observed for this species in this study.

According to the “C quality-temperature” (CQT) hypothesis, decomposition of organic matter (OM) exhibiting **a** low decomposition rate **should have** a greater temperature sensitivity than that of faster-turnover substrates (see Laganière et al. 2015) while we observed no change in Q_{10} with climate. Our results diverged from those of Laganière (2015) in that we did not find a lower reactivity to temperature, nor a greater amount of **bioreactive** OM in the soils of the cold sites. The increase in **bioreactive** organic matter on cold sites, observed in this latter study could be due to a greater abundance of bryophytes in the colder sites of this transect study, favouring the accumulation of **bioreactive** organic matter (Kohl et al. 2018). We did not observe a trend for a greater abundance of bryophytes as a ground cover along our climatic gradient and this could explain the absence of a change in soil **bioreactive** OM in our study. Bryophyte abundance is **linked** to canopy openness (Pacé et al 2016) and our sites all had a closed canopy. The impact of the development of a bryophyte cover on soil C dynamics can be important (Simard et al. 2007).

Supprimé: Labile

Supprimé: labile

Supprimé: lability

Mis en forme : Indice

Mis en forme : Indice

Supprimé: labile

Supprimé: labile

Supprimé: soil organic matter

Supprimé: on

Supprimé: o

Mis en forme : Indice

Supprimé: ¶

Supprimé: s

Supprimé: labile

Supprimé: labile

Supprimé: labile

Supprimé: labile

Supprimé: often

720 A reduction of bioreactive soil C with warming had been observed in a manipulative
 experiment on a nearby site. D'orangeville et al. (2013) as well as Marty et al. (2019)
 found a reduction in labile C with artificial soil warming, while they observed no change in
SOM composition congruently with our observations. The difference in the results from
 these studies and ours regarding changes in soil respiration reactivity to temperature (Q_{10})
 and bioreactive C, suggest that artificial soil warming may not have the full effect that long
 term climate warming has both on fluxes to and from the soil. A balance between C inputs
 and outputs may contribute to the maintance of soil organic matter stocks and properties
 despite warming. Climate gradient studies may also be more suited than warming
 experiments to observe changes that take a long time to appear.

730 Stabilized MAOM (mineral-associated organic matter) reservoirs may reach a saturation
point, especially in non-recently disturbed soils (Lavallée et al. 2020). Boreal regions show
the highest concentrations of dissolved organic carbon (DOC) in the surface soil globally
(Langeveld et al. 2020), indicating that the capacity of these soils to immobilized DOC as
water percolates through the soil column is limited. Cotrufo et al. (2021) suggested that
under cold and wet conditions, it is not MAOM but poorly stabilized particulate organic
matter (POM) that dominates the dynamics of SOC cycling. If indeed MAOM reservoirs
have reached saturation, and POM dominates the SOC cycling, our results suggest that
warming, while accelerating SOC cycling, does not lead to changes in the stocks of either
 740 POM or MAOM. However, more research is needed to determine how the different
fractions of SOM are impacted by changes both in aridity and in temperature and to
identify thresholds in aridity from which SOC stocks become vulnerable to warming.

5. CONCLUSION

Our results showed ed no evidence of net SOM losses or a reduction of the most active SOM
 fraction with a warmer climate and contrast with the conclusions that were reached in other
 studies derived from climate gradient studies or from direct soil warming experiments. Our
 results are applicable to the context of the study: a cold and wet climate where available
 moisture does not limit productivity or decomposition; closed-canopy coniferous forests
 750 that were not recently disturbed and the absence of change in forest composition along the

Supprimé: labile

Supprimé: active

Supprimé: soil organic matter

Supprimé: labile

Supprimé: i

Supprimé: in stable forms of soil organic matter because MAOM

Supprimé: s

Supprimé: form

Supprimé:

Mis en forme : Normal, Sans numérotation ni puces

Supprimé: The fact that we did not observed differences in total SOM stocks in our study suggest that MAOM formation are not sensitive to climate perhaps because these reservoirs tend to saturate (Lavallée et al. 2020). Boreal regions show the highest concentrations of dissolved organic carbon (DOC) in the surface soil globally (Langeveld et al. 2020). This also suggest that the capacity for these soils to accumulate stable SOC is limited and that warming essentially changes the dynamics of unprotected POM. Cotrufo et al. (2021). POM dominates the dynamics of SOC cycling under cold and wet conditions. Apparently, warming both accelerated fluxes to and from the soil contribution to a stability of both SOM stocks and SOM stability.¶

Our results suggest that the dynamics of SOM that is not stabilised by association with minerals, that can be referred to as particulate organic matter (POM) has a large influence on C cycling in these soils. As indicated by Cotrufo et al. (2021), POM dominates the dynamics of SOC cycling under cold and wet conditions. Apparently, warming both accelerated fluxes to and from the soil contribution to a stability of both SOM stocks and SOM stability.¶

Déplacé (insertion) [1]

Déplacé vers le haut [1]: Cotrufo et al. (2021), POM dominates the dynamics of SOC cycling under cold and wet conditions. Apparently, warming both accelerated fluxes to and from the soil contribution to a stability of both SOM stocks and SOM stability.

Supprimé: environment

Supprimé:

climate gradient. Other studies conducted under a wet climate corroborate these results.
Altogether, results from this study and from others suggest that a certain aridity threshold
needs to be reached before a warmer climate has implications for SOM stocks.
Recognizing that the effects of climate change on SOM are not linear, identifying these
thresholds would greatly improve our capacity to predict the fate of the important SOM
pool in boreal ecosystems under climate change. Our results also suggest that aridity may
be more important than temperature in controlling SOM stocks.

Forest composition had effects on both SOM quality and the rate of C cycling. However,
warming did not show interacting effects with forest composition. This suggest that
differences in C cycling with forest composition remained stable with projected changes to
temperature. These results indicate that the impact of climate change on SOM storage and
dynamics needs to be studied both within and among forest ecosystem types to separate the
direct effects of climate change from that of vegetation change.

ACKNOWLEDGEMENTS

Financial support was provided by the PERD program of the Office of Energy Research
and Development of Natural Resources Canada (Enhancement of Greenhouse Gas Sinks
POL 6.2.1). We wish to thank L. St-Antoine, R. Morin, S. Audet and A. Courcelle for their
contribution to field and lab work as well as Xiao Jing Guo, and Maryse Marchand for
providing advice on the statistical analyses and Rémi St-Amant for providing
meteorological data from Biosim.

REFERENCES

Abrams, M., Crippen, R., & Fujisada, H. (2020). ASTER global digital elevation model
(GDEM) and ASTER global water body dataset (ASTWBD). Remote Sensing, 12(7),
1156.
Andrieux, B. Beguin, J., Bergeron, Y., Grondin, P., Paré, D.: Drivers of post-fire soil organic
carbon accumulation in the boreal forest, Global Change Biol. 24: 4797-4815.
doi:10.1111/gcb.14365, 2018.

Supprimé: Other studies conducted under humid climate lend support to these results.

Supprimé: the

Supprimé: effect

Supprimé: s

Supprimé: in climatic conditions

Supprimé: Altogether, these

Supprimé: effects

Supprimé: ¶

Supprimé: ¶

- Andrieux, B., Paré, D., Beguin, J., Grondin, P., and Bergeron, Y.: Boreal-forest soil chemistry drives soil organic carbon bioreactivity along a 314-year fire chronosequence, *SOIL*, 6, 195–213, doi.org/10.5194/soil-6-195-2020, 2020, 2020.
- Aubin, I., L. Boisvert-Marsh, H. Kebli, D. McKenney, J. Pedlar, K. Lawrence, E. H. Hogg, Y. Boulanger, S. Gauthier, and Ste-Marie, C: Tree vulnerability to climate change: improving exposure-based assessments using traits as indicators of sensitivity. *Ecosphere* 9(2):e02108, doi.org/10.1002/ecs2.2108 , 2018.
- Bergeron, O., Margolis, H.A., Black, T.A., Coursolle, C., Dunn, A.L., Barr, A.G. and Wofsy, S.C.: Comparison of carbon dioxide fluxes over three boreal black spruce forests in Canada. *Global Change Biology*, 13: 89-107, doi.org/10.1111/j.1365-2486.2006.01281.x, 2007.
- Bond-Lamberty, B., Wang, C., & Gower, S. T.: A global relationship between the heterotrophic and autotrophic components of soil respiration? *Global Change Biology*, 10(10), 1756–1766, doi.org/10.1111/j.1365-2486.2004.00816, 2004.
- Boulanger, Y., Gauthier, S., and Burton, P.J.: A refinement of models projecting future Canadian fire regimes using homogeneous fire regime zones, *Can. J. For. Res.* 44: 365-500. doi:10.1139/cjfr-2013-0372, 2014.
- Brown CD, Vellend M.: Non-climatic constraints on upper elevational plant range expansion under climate change, *Proc. R. Soc. B* 281: 20141779, doi.org/10.1098/rspb.2014.1779, 2014.
- Buchmann, N.: Biotic and abiotic factors controlling soil respiration rates in *Picea abies* stands, *Soil Biol. Biochem.* 32:1625-1635, doi:10.1016/S0038-0717(00)00077-8, 2000.
- Carvalhais, N., Forkel, M., Khomik, M., Bellarby, J., Jung, M., Migliavacca, M.: Global covariation of carbon turnover times with climate in terrestrial ecosystems, *Nature*, 514, 213–217, DOI: 10.1038/nature13731, 2014.
- 850 Cotrufo, M. F., Wallenstein, M. D., Boot, C. M., Denef, K. & Paul, E.: The Microbial Efficiency-Matrix Stabilization (MEMS) framework integrates plant litter decomposition with soil organic matter stabilization: do labile plant inputs form stable soil organic matter? *Glob. Change Biol.* 19, 988–995, doi.org/10.1111/gcb.12113, 2013.
- Cotrufo, F., Lavalée, M. Zhang, J.M., Hansen, Y., Paustian, K.H., Schipanski, M. and Wallenstein, M.D.: In-N-Out: A hierarchical framework to understand and predict soil

- carbon storage and nitrogen recycling, *Glob Change Biol*, 27: 4465-4468, doi.org/10.1111/gcb.15782, 2021.
- Couillard, PL., Payette, S., Lavoie, M., Frégeau, M.: Macrocharcoal-Based Chronosequences Reveal Shifting Dominance of Conifer Boreal Forests Under Changing Fire Regime, *Ecosystems* 21, 1183–1195, doi.org/10.1007/s10021-017-0211-3, 2018.
- 860 Crowther, T., Todd-Brown, K., Rowe, C. et al.: Quantifying global soil carbon losses in response to warming, *Nature* 540, 104–108, doi.org/10.1038/nature20150. 2016.
- Dalsgaard, L. Lange, H., Strand, L.T., Callesen, I. Borgen, S.K., Liski, J., Astrup, R. Underestimation of boreal forest soil carbon stocks related to soil classification and drainage. *Can. J. For. Res.*, 46:1413-1425, doi.org/10.1139/cjfr-2015-0466, 2016.
- Dannehyrolles, V., Dupuis, S., Fortin, G. et al.: Stronger influence of anthropogenic disturbance than climate change on century-scale compositional changes in northern forests, *Nat Commun* 10, 1265, doi.org/10.1038/s41467-019-09265-z . 2019.
- Deluca, T.H., Boisvenue, C.: Boreal forest soil carbon: distribution, function and modelling.
- 870 Forestry: 85: 161–184, doi.org/10.1093/forestry/cps003, 2012.
- D’Orangeville, L., Côté, B., Houle, D. et Whalen, J.: Reduced mineralizable carbon in a boreal forest soil after three years of artificial warming, *Can. J. Soil Sci.* 93: 567-572, https://doi.org/10.4141/cjss2013-046, 2013.
- D’Orangeville, L., Duchesne, L., Houle, D., Kneeshaw, D., Côté, B. and Pederson, N.: Northeastern North America as a potential refugium for boreal forests in a warming climate. *Science* 352,1452–1455, doi:10.1126/science.aaf4951, 2016.
- Fissore, C., C. P. Giardina, C. W. Swanston, G. M. King, and Kolka, R.K.: Variable temperature sensitivity of soil organic carbon in North American forests, *Global Change Biol.*, 15, 2295–2310, 2009.
- 880 Garten, C.T.: Comparison of forest soil carbon dynamics at five sites along a latitudinal gradient. *Geoderma* 167-168, 30-40, doi.org/10.1016/j.geoderma.2011.08.007, 2011.
- Girardin, M.P. Guo, X.J., Metsaranta, J., Gervais, D., Campbell, E., Arsenault, A., Isaac-Renton, M., Harvey, J.E. Bhatti, J. and Hogg, E.H.: A national tree-ring data repository for Canadian forests (CFS-TRenD): structure, synthesis, and applications. *Environmental Reviews*, e-First doi.org/10.1139/er-2020-0099, 2021.

Code de champ modifié

Code de champ modifié

Code de champ modifié

- Girardin M.P., Hogg E.H., Bernier P.Y., Kurz W.A., Guo X.J., and Cyr G.: Negative impacts of high temperatures on growth of black spruce forests intensify with the anticipated climate warming, *Glob. Change Biol.* **22**: 627–643, doi.org/10.1111/gcb.13072, 2016.
- Giardina, C., Litton, C., Crow, S. *et al.*: Warming-related increases in soil CO₂ efflux are explained by increased below-ground carbon flux. *Nature Clim. Change* **4**, 822–827, doi.org/10.1038/nclimate2322, 2014.
- Hember, R. A., Kurz, W. A., & Girardin, M. P.: Tree ring reconstructions of stemwood biomass indicate increases in the growth rate of black spruce trees across boreal forests of Canada. *Journal of Geophysical Research: Biogeosciences*, **124**, 2460–2480. doi.org/10.1029/2018JG004573, 2019.
- Hoegh-Guldberg, O., D. Jacob, M. Taylor, M. Bindi, S. Brown, I. Camilloni, A. Diedhiou, R. Djalante, K.L. Ebi, F. Engelbrecht, J. Guiot, Y. Hijikata, S. Mehrotra, A. Payne, S.I. Seneviratne, A. Thomas, R. Warren, and Zhou, G.: Impacts of 1.5°C Global Warming on Natural and Human Systems. In: *Global Warming of 1.5°C. An IPCC Special Report on the impacts of global warming of 1.5°C above pre-industrial levels and related global greenhouse gas emission pathways, in the context of strengthening the global response to the threat of climate change, sustainable development, and efforts to eradicate poverty* [Masson-Delmotte, V., P. Zhai, H.-O. Pörtner, D. Roberts, J. Skea, P.R. Shukla, A. Pirani, W. Moufouma-Okia, C. Péan, R. Pidcock, S. Connors, J.B.R. Matthews, Y. Chen, X. Zhou, M.I. Gomis, E. Lonnoy, T. Maycock, M. Tignor, and T. Waterfield (eds.)], 2018.
- Huntzinger, D.N., Schaefer, K., Schwalm, C., Fisher, J.B., Hayes, D., Stofferahn, E., Carey, J., (...), Tian, H.: Evaluation of simulated soil carbon dynamics in Arctic-Boreal ecosystems, *Env. Res. Letters*, **15** (2), art. no. 025005, doi: 10.1088/1748-9326/ab6784, 2020.
- Ishizuka S., Sakata T., Sawata S., Ikeda S., Takenaka C., Tamai N., akai H., Shimizu T., Kanna K., Onodera S., Tanaka N., Takahashi, M.: High potential for increase in CO₂ flux from forest soil surface due to global warming in cooler areas of Japan, *Ann. For. Sci.* **63**: 537–546, <https://doi.org/10.1051/forest:2006036>, 2006.
- Kane, E.S., Valentine, D.W., Schuur, E.A.G. and Dutta, K.: Soil carbon stabilization along climate and stand productivity gradients in black spruce forests of interior Alaska, *Can. J. For. Res.* **35**: 2118–2129, doi.org/10.1139/x05-093, 2005.

Code de champ modifié

Supprimé: Kane, K

- 920 Kane, E.S. & Vogel, J.G. Patterns of Total Ecosystem Carbon Storage with Changes in Soil
Temperature in Boreal Black Spruce Forests. *Ecosystems* 12: 322–335 DOI:
10.1007/s10021-008-9225-1, 2009.
- Kasischke, E.S., Christensen, N.L., Jr and Stocks, B.J: Fire, Global Warming, and the Carbon
Balance of Boreal Forests. *Ecological Applications*, 5: 437-51. doi.org/10.2307/1942034,
1995.
- Kohl, L., Philben, M., Edwards, K.A., Podrebarac, F.A., Warren, J., Ziegler, S.E.: The origin
of soil organic matter controls its composition and bioreactivity across a mesic boreal
forest latitudinal gradient, *Glob. Change Biol.* 2018; 24: e458– e473,
doi.org/10.1111/gcb.13887, 2018.
- 930 Kroetsch, D., and Wang, C.: Particle Size Distribution, in: *Soil Sampling and Methods of
Analysis*, Second Edition, edited by: Carter M. R., and Gregorich, E. G., CRC Press, Boca
Raton, FL, 2007.
- Laganière, J., Podrebarac, F., Billings, S.A., Edwards, K.A. and Ziegler, S.E.:
A warmer climate reduces the bioreactivity of isolated boreal forest soil
Horizons without increasing the temperature sensitivity of respiratory CO₂ loss,
Soil Biol. Biochem. 84,177–188, doi:10.1016/j.soilbio.2015.02.025, 2015.
- Langeveld, J., Bouwman, A.F., van Hoek, W.J. et al. Estimating dissolved carbon
concentrations in global soils: a global database and model. *SN Appl. Sci.* 2, 1626 (2020),
doi.org/10.1007/s42452-020-03290-0, 2020.
- Larocque, G.R.; Paré, D.; Boutin, R.; Sarr, L.; Lacerte, V.; Anseau, C.. 2014. Comparing
carbon pools and tree growth in balsam fir (*Abies balsamea*) and black spruce (*Picea*
940 *mariana*) forest ecosystems located along a climatic gradient. *Ecoscience* 21(3-4):265-277 ,
doi:10.2980/21-(3-4)-3701. 2014.
- Lavallee, J., Soong, J. L., & Cotrufo, M. F. (2020). Conceptualizing soil organic matter into
particulate and mineral-associated forms to address global change in the 21st century. *Global
Change Biology*, 26, 261–273. doi.org/10.1111/gcb.14859, 2020.
- Lavigne, M.B., Boutin, R., Foster, R.J., Goodine, G., Bernier, P.Y., Robitaille, G., 2003. Soil
respiration responses to temperature are controlled more by roots than by decomposition in
Liski, J, and Westman, C.J. 1997. Carbon storage of forest soil in Finland. 1. Effect of
thermoclimate. *Biogeochemistry* 36 (3), p. 239–260, 1997.

Mis en forme : Police : (Par défaut) Times New Roman, 12 pt

Mis en forme : Police : (Par défaut) Times New Roman, 12 pt,
Anglais (Canada)

Mis en forme : Police : (Par défaut) Times New Roman, 12 pt

Code de champ modifié

Code de champ modifié

Code de champ modifié

Litton C.M. Raich J.W. Ryan M.G.. 2007. Carbon allocation in forest ecosystems. Glob. Change Biol. 13:2089–2109. doi.org/10.1111/j.1365-2486.2007.01420.x

Malhi Y., Doughty C.& Galbraith D. 2011.The allocation of ecosystem net primary productivity in tropical forestsPhil. Trans. R. Soc. B3663225–3245, doi.org/10.1098/rstb.2011.0062,

Marty, C., Piquette, J., Morin, H., Bussi res, D., Thiffault, N., Houle, D., Bradley, R.L., Simpson, M.J., Ouimet, R., Par , M.C. 2019. Nine years of in situ soil warming and topography impact the temperature sensitivity and basal respiration rate of the forest floor in a Canadian boreal forest. PLoS ONE 14, e0226909, doi:10.1371/journal.pone.0226909. eCollection, 2019.

Mayer, M.; Prescott, C.; Abaker, W.E.A.; Augusto, L.; C cillon, L.; Ferreira, G.W.D.; James, J.; Jandl, R.; Katzensteiner, K. Laclau, J.-P.; Lagani re, J.; Nouvellon, Y.; Par , D.; Stanturf, J.A.; Vanguelova, E.I.; Vesterdal, L.: Tamm Review:Influence of forest management activities on soil organic carbon stocks: a knowledge synthesis. For. Ecol. Manag. Vol. 66., doi:10.1016/j.foreco.2020.118127, 2020.

Melillo J.M., Steudler P.A., Aber J.D., Newkirk K., Lux H., Bowles F.P., Catricala C., Magill A., Ahrens T., Morrisseau S.: Soil warming and carbon-cycle feedbacks to the climate system: Sci. 298(5601):2173-6, doi: 10.1126/science.1074153, 2002.

Meyer, N., Welp, G. & Amelung, W.: The temperature sensitivity (Q10) of soil respiration: Controlling factors and spatial prediction at regional scale based on environmental soil classes. Glob. Biogeochem. Cycles, 32, 306–323, doi.org/10.1002/ 2017GB005644, 2018.

970 Naidu, DGT, Bagchi, S.: Greening of the earth does not compensate for rising soil heterotrophic respiration under climate change, Glob. Change Biol. 2021; 27: 2029– 2038. doi.org/10.1111/gcb.15531, 2021.

Norris, C.E., Quideau, S.A., Bhatti, J.S., Wasylishen, R.E.: Soil carbon stabilization in jack pine stands along the Boreal Forest Transect Case Study, Glob. Change Biol. 17, 480-494, doi.org/10.1111/j.1365-2486.2010.02236.x, 2011.

Pac , M.; Fenton, N.; Par , D.; Bergeron, Y.: Ground layer composition affects tree fine root biomass and soil nutrient availability in jack pine and black spruce forests under extreme drainage conditions, Can. J. For. Res. 47: 433–444. doi:10.1139/cjfr-2016-0352, 2016.

Code de champ modifi 

Code de champ modifi 

Code de champ modifi 

Code de champ modifi 

Code de champ modifi 

Code de champ modifi 

Code de champ modifi 

Code de champ modifi 

Code de champ modifi 

Code de champ modifi 

Code de champ modifi 

Code de champ modifi 

Code de champ modifi 

Paré, D., Banville, J.L., Garneau, M., Bergeron, Y.: Soil carbon stocks and soil carbon quality
980 in the upland portion of a boreal landscape, James Bay, Quebec. *Ecosystems* 14: 533-546.
doi.org/10.1007/s10021-011-9429-7, 2011.

Paré, D.; Bernier, Y.; Lafleur, B.; Titus, B.D.; Thiffault, E.; Maynard, D.G.; Guo, X.:
Estimating stand-scale biomass, nutrient contents and associated uncertainties for tree
species of Canadian forests. *Can. J. For. Res.* 43: 599–608, doi.org/10.1139/cjfr-2012-
0454, 2013.

Régnière, J. & St-Amant, R.: BioSIM 9: user's manual. Natural Resources Canada, Canadian
Forest Service, Information Report LAU-X-134, 2008.

Rustad, L.E., Campbell, J.L., Marion, G.M., Norby, R.J., Mitchell, M.J., Hartley, A. E.,
Cornelissen, J.H.C., Gurevitch, J.: A meta-analysis of the response of soil respiration, net
990 nitrogen mineralization, and aboveground plant growth to experimental ecosystem
warming, *Oecologia* 126:543–562, doi.org/10.1007/s004420000544, 2001.

SAS Institute Inc 2013. SAS/ACCESS® 9.4 Interface to ADABAS: Reference. Cary, NC: SAS
Institute Inc.

Scharlemann, J.P.W., Tanner, E.V.J., Hiederer, R., Kapos, V.: Global soil carbon:
understanding and managing the largest terrestrial carbon pool. *Carbon Manage.* 5,81–91,
doi.org/10.4155/cmt.13.77, 2014.

Schmidt, M. W. I., Torn, M. S., Abiven, S., Dittmar, T., Guggenberger, G., Janssens, I. A.,
Kleber, M., Kogel-Knabner, I., Lehmann, J., Manning, D. A. C., Nannipieri, P., Rasse, D.
P., Weiner, S., and Trumbore, S. E.: Persistence of soil organic matter as an ecosystem
1000 property. *Nature* 478: 49–56, DOI: 10.1038/nature10386, 2011.

Simard, M., N. Lecomte, Y. Bergeron, P. Y. Bernier, and D. Pare . 2007. Forest productivity
decline caused by successional paludification of boreal soils. *Ecological Applications* 17:
1619– 1637, doi.org/10.1890/06-1795.1 2007.

Tewksbury, C.E., and Van Miegroet, H.: Soil organic carbon dynamics along a climatic gradient
in a southern Appalachian spruce-fir forest. *Can. J. For. Res.* 37: 1161-1172,
doi.10.1139/X06-317, 2007.

Trabucco, A., and Zomer, R.J. 2018. Global Aridity Index and Potential evapotranspiration
(ET0) Climate Database v2 [https://cgiarcsi.community/data/global-aridity-and-pet-
database/](https://cgiarcsi.community/data/global-aridity-and-pet-database/)

Mis en forme : Français (Canada)

Mis en forme : Justifié, Retrait : Suspendu : 0,5 cm, Espace
Après : 0 pt, Interligne : 1,5 ligne

- 1010 von Buttlar, J., Zscheischler, J., Rammig, A., Sippel, S., Reichstein, M., Knohl, A., Mahecha, M. D.: Impacts of droughts and extreme-temperature events on gross primary production and ecosystem respiration: A systematic assessment across ecosystems and climate zones. *Biogeosciences*, 15, 1293–1318, doi.org/10.5194/bg-15-1293-2018, 2018.
- Wieder, W. R., Sulman, B. N., Hartman, M. D., Koven, C. D., & Bradford, M. A.: Arctic soil governs whether climate change drives global losses or gains in soil carbon. *Geophysical Research Letters*, 46, 14486– 14495, doi.org/10.1029/2019GL085543, 2019.
- Yanai, R.D., Stehman, S.V., Arthur, M.A., Prescott, C.E., Friedland, A.J., Siccama, T.G. and Binkley, D.: Detecting Change in Forest Floor Carbon, *Soil Sci. Soc. Am. J.*, 67: 1583-1593, <https://doi.org/10.2136/sssaj2003.1583>, 2003.
- 1020 Ziegler, S.E., Benner, R., Billings, S.A., Edwards, K.A., Philben, M., Zhu, X., Laganière, J.: Climate Warming Can Accelerate Carbon Fluxes without Changing Soil Carbon Stocks, *Frontiers in Earth Science* 5, doi.org/10.3389/feart.2017.00002, 2017.

Supprimé: Vogel, J.G., Valentine, D.W., Ruess, R.W.: Soil and root respiration in mature Alaskan black spruce forests that vary in soil organic matter decomposition rates. *Can. J. For. Res.* 35, 161-174. doi.org/10.1139/x04-159, 2005.¶

Mis en forme : Anglais (Canada)

Code de champ modifié

Code de champ modifié

Data Availability Statement

The datasets generated for this study will be made available on Open Canada:
open.canada.ca/en