

Methodology for constructing a flood-hazard map for a future climate

Yuki Kimura^{1,2}, Yukiko Hirabayashi³, Yuki Kita^{2,4}, Xudong Zhou², Dai Yamazaki²

¹Risk Assessment Department, MS&AD InterRisk Research & Consulting, Inc., 2-105, Kanda Awajicho, Chiyoda-ku, Tokyo 101-0063, Japan

²Institute of Industrial Science, The University of Tokyo, 4-6-1, Komaba, Meguro-ku, Tokyo 153-8505, Japan

³Department of Civil Engineering, Shibaura Institute of Technology, 3-7-5 Toyosu, Koto-ku, Tokyo, 135-8548, Japan

⁴Gaia Vision Inc. 6-23-4 Jingumae, Shibuya-ku, Tokyo, 150-0001, Japan

Correspondence to: Yuki Kimura (yuuki.kimura@ms-ad-hd.com)

Abstract. Flooding is a major natural hazard in many parts of the world, and its frequency and magnitude are projected to increase with global warming. With increased concern over ongoing climate change, more detailed and precise information about climate-change risks is required for formulating local-scale countermeasures. However, the impacts of biases in climate-model outputs on river-flood simulation have not been fully evaluated, and thus evaluation of future flood risks using hazard maps (high-resolution spatial distribution maps of inundation depths) has not been achieved. Therefore, this study examined methods for constructing future-flood-hazard maps and discussed their validity. Specifically, we compared the runoff-correction method that corrects for bias in general-circulation-model (GCM) runoff using the monthly climatology of reanalysis runoff with the lookup method, which uses the GCM simulation results without bias correction to calculate changes in the return period, and depends on the reanalysis simulation to determine absolute flood depths. The results imply that the runoff-correction method may produce significantly different hazard maps compared to those based on reanalysis of runoff data. We found that in some cases, bias correction did not perform as expected for extreme values associated with the hazard map, even under the historical climate, as the bias of extreme values differed from that of the mean value. we found that the change direction of ~~the change in a~~ future hazard (increase or decrease) obtained using the runoff-correction method relative to the reference reanalysis-based hazard map may be inconsistent with ~~the~~ changes projected by ~~the GCMsCaMa-Flood simulations based on GCM runoff input~~ in some cases. On the other hand, ~~we confirmed that~~ the lookup method ~~can produce~~produced future-hazard maps that are consistent with ~~the flood hazard~~ changes ~~in flood risk~~ projected by ~~the GCMsCaMa-Flood simulations obtained using GCM runoff input~~, indicating the possibility of obtaining reasonable inundation-area distribution. ~~The~~These results ~~implies~~suggest that the lookup method is more suitable for future-flood hazard-map construction than the runoff-correction method. The lookup method also has the advantage of facilitating research on efficient construction of future-climate hazard maps, as it allows for improvement of the reanalysis hazard map through upgrading of the model and separate estimation of changes due to climate change. We discuss future changes at global scale in inundation areas and the affected population within the inundation area. Using the lookup method, the total population living in modeled inundation areas with flood magnitudes exceeding the 100-year return period under a future climate would

be ~~around~~approximately 1.886 billion. In the assessment of future climate risks, we found that an affected population of ~~around~~approximately 0.52 billion may be missed if the historical hazard map is used as an alternative to constructing future-hazard maps and only frequency changes are considered. These results ~~impliesuggest~~ that in global flood-risk studies, future-hazard maps are important for proper estimation of climate-change risks, rather than assessing solely changes in the frequency of occurrence of a given flood intensity.

1 Introduction

Flooding is a common major natural hazard in many parts of the world, and its frequency and magnitude are projected to increase with global warming. The 6th Assessment Report of the Intergovernmental Panel on Climate Change (IPCC) Chapters 11 indicated that the incidence of heavy rainfall has increased in many regions since 1950 (Seneviratne et al., 2021). Hirabayashi et al., 2021 assessed changes in the frequency of flood risk in the future and showed that flood risk will increase in many regions, including South Asia, Southeast Asia, Northeast Eurasia, eastern and low-latitude Africa, and South America. According to Dottori et al., 2018, with a temperature increase of 1.5°C, human losses from flooding could rise by 70–83% and direct flood damage by 160–240% in the absence of future adaptation measures. Alfieri et al., 2017 showed that with 4°C warming, countries representing more than 70% of the global population and global gross domestic product (GDP) would face increases in flood risk of more than 500%. While these global-scale studies have projected total future flood losses at the continental, regional or national scales, they do not provide local flood risk information under future climatic conditions.

Following the increase in concern about ongoing climate change, detailed and high-resolution information about climate-change risk that can be used for local-scale countermeasures is essential. To elucidate the potential impacts of flood disasters, a high-resolution ~~map of potential disaster impacts~~inundation-depth maps must be developed, commonly named a hazard map. The Sendai Framework for Disaster Risk Reduction 2015–2030 produced by the United Nations Office for Disaster Risk Reduction (UNISDR) also highlighted the importance of developing hazard maps to clarify disaster risk. Flood-hazard maps describe the spatial distribution of potential inundation depths for an event of specific occurrence probability to illustrate quantitatively the risk distribution at a local scale.

Local-scale flood-hazard maps have been developed by many research institutes and local governments using historical observation data and flood-inundation models, and these maps are used for various purposes. Governments and municipalities use flood-hazard maps to identify risks and formulate business-continuity plans (BCPs) (De Moel et al., 2009). In the research field, for example, Bates et al., 2022 estimated annual flood damage in UK and Wing et al., 2022 estimated flood damage in US by using local-scale flood-hazard maps. In many countries, flood-hazard maps are made available to the public to assist residents in identifying their own risks and facilitate evacuation activities. The private sector is also making progress in using local-scale flood-hazard maps. For example, the insurance industry uses local-scale hazard maps to set premium rates corresponding to local hazards. The National Flood Insurance Program (NFIP) in the United States uses

65 flood-insurance-rate maps (flood surface elevations for the N-year return period) provided by the Federal Emergency Management Agency (FEMA) to calculate flood-insurance-premium rates (FEMA, 2018). Companies also use local-scale hazard maps to identify flood risks to their own buildings and factories, scrutinize the contents of their insurance policies, and formulate BCPs in preparation for a possible disaster (Japan Institute of Country-ology and Engineering 39th report, 2021). However, in many developing countries in Asia and Africa, detailed local hazard maps are unavailable.

70 In the research field, large-domain flood-hazard maps have been developed to assess flood risks and their distribution at the global scale. Examples of large-domain flood-hazard maps include maps constructed by Fathom (Sampson et al., 2015), the Joint Research Centre (JRC, 2022), Global Assessment Report (GAR, 2015), and Aqueduct Floods published by the World Research Institute (WRI) (Aqueduct, 2022). ~~Uses of large~~Large-domain flood-hazard maps include have been used in many applications such as estimation of the affected population within an inundation area and determination of the impacts of flooding on GDP and urban areas in the current climate (Ward et al., ~~2020~~2020a). Validation of large-domain flood-hazard maps is currently underway. Hirabayashi et al., 2022 ~~and~~, Trigg et al., 2016 and Bernhofen et al., 2018 compared multiple global flood models and analyzed the factors contributing to differences in inundation areas and depths. Although their accuracy may be insufficient, large-domain hazard maps for the current climate are now being used for various decision-making purposes. Hirabayashi et al., 2022 provided recommendations for the practical application of large-domain hazard maps in corporate practice.

In addition to flood-hazard maps of the historical period, developing flood-hazard maps for a future period is also essential to assess climate-change risk quantitatively. ~~While assessment of~~Although climatic and meteorological hazards under future climate-__change risks—(e.g., extreme temperatures, droughts and heavy-rainfall events) has ~~have~~ been widely ~~performed~~assessed using direct output variables of general circulation models (GCMs), such as precipitation and temperature (Li et al., 2021, Lu et al., 2019), ~~assessment of future flood risks based on the spatial distribution of inundation depths has not yet been established. Given that inundation depths are regulated by local topography at scales much finer than the resolution of GCMs, additional processing of GCM outputs using a flood-risk model is essential. At present to date,~~ no global high-resolution future ~~climate flood hazard (i.e., inundation_ depth_ profile)~~ has been sufficiently verified. Some studies have evaluated future flood risks (e.g., affected population and GDP) at the global scale (e.g., Ward et al., 2020b); however, it is important to analyze global future flood hazards (i.e., inundation depth distribution), and to assess uncertainties such as those caused by various bias correction methods.

Simulation of inundation areas and depths under a future climate at high resolution is technically possible using the latest global river models together with climate-projection data and downscaling techniques. However, the reliability of future flood-hazard mapping has not been thoroughly assessed, in part because no methodology to correct the bias present in the runoff output from GCMs has yet been established. Climate-projection data contain biases, and the direct use of climate-projection data faces problems, including the inability to estimate the duration of inundation, which is important for estimating indirect damage (Taguchi et al., 2022). While bias-correction methods for precipitation and temperature have

been studied in detail (Watanabe et al., 2012, Hempel et al., 2013 and Lafond et al., 2014), such methods have not been established for runoff data for use as inputs to global flood models to construct large-domain future flood hazard maps.

100 At present, methods for constructing future flood-hazard maps have not been evaluated in detail. Therefore, this study investigated the following points to validate global flood-hazard maps under a future climate constructed using the global river model. We compared two representative methods for generating future flood-hazard maps that handle bias in GCM runoff, and investigated which method produces the most reasonable inundation-depth distribution. The causes of differences in the hazard maps constructed using the two methods were investigated, and the most appropriate method for creating
105 future-hazard maps was assessed. In addition, we examined how much the estimated changes in future flood risk differed depending on whether bias correction was implemented and the method used for future-hazard mapping.

This paper is organized as follows. Section 2 describes the models and bias-correction methods used in this study and the method used to construct future flood-hazard maps. Section 3 explores several methods to construct hazard maps for a future climate, and the cause of differences among hazard maps constructed using various methods. In Section 4, we discuss which
110 method is most appropriate for creating future-hazard maps and how much the estimates of future flood risk changes differed depending on whether bias correction was implemented and on the method used for future-hazard mapping.

2 Methods

2.1 Model and Data

We used the Catchment-based Macro-scale Floodplain Model (CaMa-Flood; Yamazaki et al., 2011) ver. 4.01 (Yamazaki et
115 al., 2021) for global river and inundation simulations. The major advantage of CaMa-Flood is its high computational efficiency. In CaMa-Flood, river channel flow and floodplain inundation can be calculated simultaneously using sub-grid topographic parameters. In this model, river flow simulation is conducted on the basis of the unit catchment element, and water level and flood extent are diagnosed from the water volume in each unit catchment using sub-grid topographic parameters. The local inertial equation (Yamazaki et al., 2013) is used as the basic flow equation. This equation can
120 represent the backwater effect, which is important for accurate reproduction of inundated areas. A flow scheme for bifurcated channels is included in CaMa-Flood (Yamazaki et al., 2014). Although CaMa-Flood is a global model, it is-unique has characteristics that it represents the physical processes necessary to reproduce floodplain inundation dynamics.

In this study, we simulated global river and inundation dynamics using three types of runoff data to construct flood-hazard maps. The three types of runoff data were: reanalysis-based runoff data obtained from past observations (Reanalysis_Runoff),
125 GCM-output runoff without bias correction (GCM_Runoff_Ori), and GCM-output runoff with bias correction (GCM_Runoff_BC). The GCM-output runoff data were analyzed for two periods: historical (1980–2014) and future (2066–2100). The reanalysis runoff data used in this study were VIC-Bias-Corrected (Yang et al., 2021), which are the output of the Variable Infiltration Capacity (VIC) Land Surface Model (Liang et al., 1994, Liang et al., 1996) with bias correction using the Global Streamflow Characteristics Dataset (Beck et al., 2015) as reference data. Yang et al., 2021 compared discharge

130 data based on VIC-Bias-Corrected runoff with observations and found that the VIC-Bias-Corrected model has excellent
 ability to estimate discharge and high reproducibility of extreme values. For VIC-Bias-Corrected runoff data, the original
 spatial resolution (3-arcmin) was input to CaMa-Flood. For GCM-output runoff (GCM_Runoff_Ori and GCM_Runoff_BC),
 we used nine GCMs: MIROC6, IPSL-CM6A-LR, GFDL-CM4, NorESM2-MM, ACCESS-CM2, INM-CM5-0, MPI-ESM1-
 2-HR, MRI-ESM2-0, and EC-Earth3, similar to Hirabayashi et al., 2021. GCM-output runoff was converted from its original
 135 spatial resolution to 30-arcmin resolution through ~~bi-linear~~bilinear interpolation. We also generated bias-corrected runoff,
 and the methods used for bias correction are described in detail in Section 2.3. The runoff products, resolutions, and periods
 assessed in this study are listed in Table 1.

Table 1: Runoff products used in this study

	Reanalysis Data (Reanalysis_Runoff)	GCM without Bias Correction (GCM_Original_Runoff)		GCM with Bias Correction (GCM_BiasCorrect_Runoff)	
Runoff Products	VIC-Bias-Corrected	9GCM of CMIP6		9GCM of CMIP6	
Time Period (Year)	1980~2014	1980~2014	2066~2100	1980~2014	2066~2100
Runoff Resolution	3arcmin	30arcmin		30arcmin	
Climate Scenarios	Historical	Historical	Future (ssp585)	Historical	Future (ssp585)

140

2.2 Reference Historical Flood-hazard map Generation

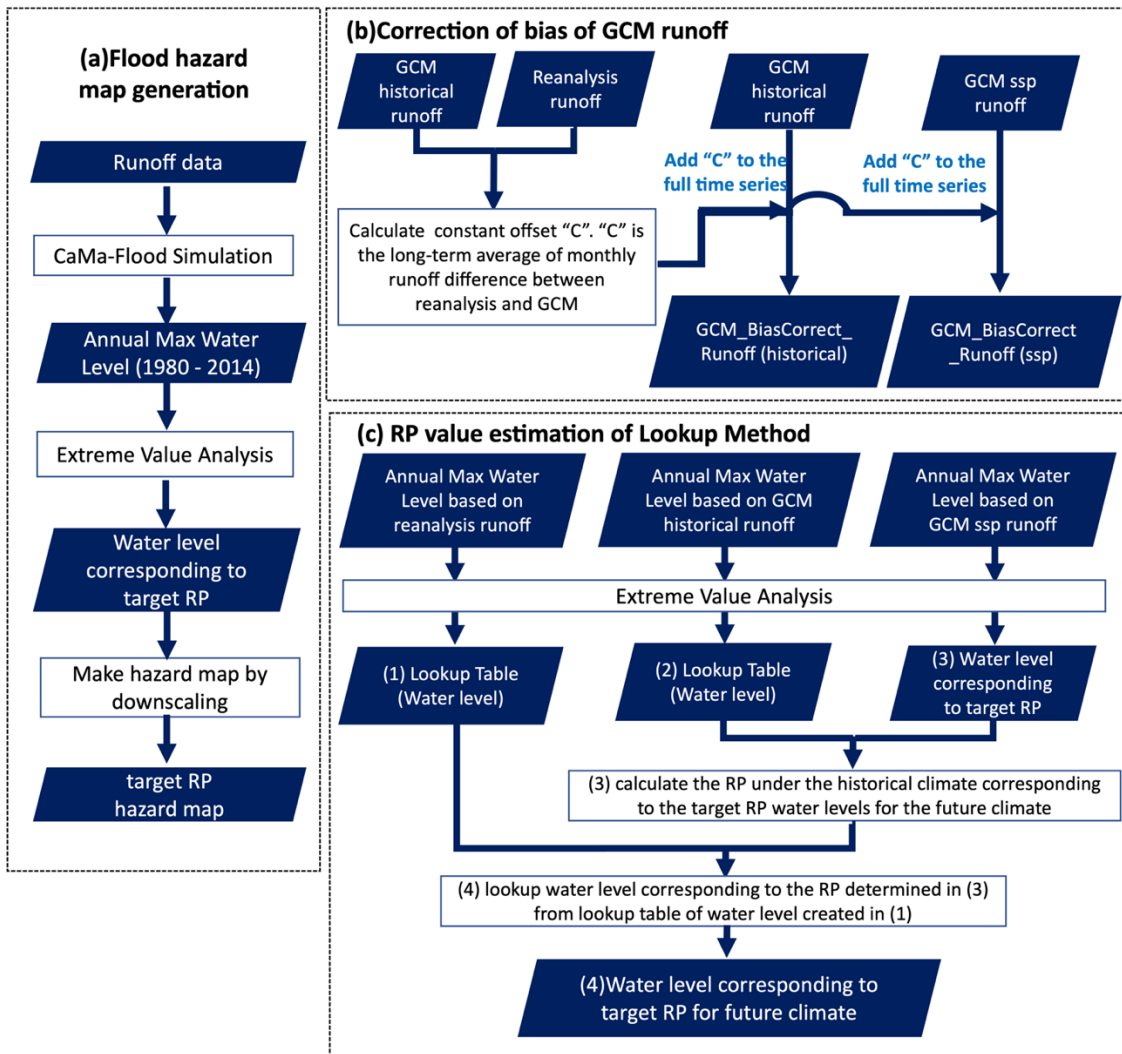
Flood-hazard maps were generated through downscaling of river water levels simulated by CaMa-Flood (6-arcmin resolution) to the resolution of elevation data (3 arcsec). The general procedures used for simulation and data processing are
 145 summarized in Figure 1 (a). First, we conducted a ~~long-term~~ historical river hydrodynamics simulation with a daily time step
 using observation-based runoff data (Reanalysis_Runoff) as an input to CaMa-Flood- (time period: 1980-2014). The CaMa-
 Flood model produces outputs as daily time series, including river discharge, river water level, and flood extent. In this study,
 the annual maximum river water level was calculated from daily river water level data and used for extreme-value analysis in
 the following step.

150 As the second step, river water levels at 6-arcmin resolution corresponding to the targeted return period were calculated.
 We fitted the Gumbel distribution (Zhou et al., 2021) to the time series of annual maximum river water levels using the L-
 moments method (Hosking, 2015) ~~on each of the CaMa-Flood 6-arcmin grid~~. Due to the relatively small dataset, we used
 the Gumbel distribution, which provides more robust and stable results from small datasets than other distributions

(Hirabayashi et al., 2021, Dankers, 2008). Then, the river water levels corresponding to the targeted return period (RP) (e.g., 100-year) for each grid point catchment were calculated from the Gumbel distribution.

We applied a simple post-processing method to ~~the~~ river water levels corresponding to the targeted RP estimated in the previous step to obtain a more reasonable spatial distribution of water levels. Through fitting of individual Gumbel distributions, the upstream water surface elevation can become lower than the downstream level, causing an unrealistic reverse water slope. To avoid this issue, if a reverse water slope was obtained in the water ~~level~~ surface elevation distribution, we ~~elevated~~ increased the water ~~level~~ surface elevation of upstream grid catchments to match those of downstream grid catchments. This reverse-slope revision during the hazard-mapping process is a new method proposed in this paper. If reverse-slope revision is not conducted, ~~the backwater effect is not considered, despite the occurrence of a~~ reverse slope, produced by fitting the Gumbel distributions remains and the inundation-depth distribution may not be physically reasonable. For this reason, a novel reverse-slope revision method was applied in this study: in the purpose of revising the spatial inconstancy caused by distribution fitting at each unit-catchment scale (grid-scale).

The third step is projecting the water levels of the target RP (e.g., 100-year) onto a high-resolution elevation map. Downscaling was performed under the assumption that the water surface elevation is uniform within each 6-min unit catchment, and thus the floodplain water depth is calculated when the terrain elevation of a 3-arcsec pixel is lower than the water surface elevation. The river network map of CaMa-Flood (6-arcmin resolution in this study) was constructed through upscaling of a high-resolution river topographic map (MERIT Hydro; Yamazaki et al., 2019). Through this procedure, correspondence between 3-sec resolution pixels and 6-min unit catchments was preserved, allowing the water level simulated at 6-min resolution to be downscaled to match topographic data with 3-sec resolution (for details of the upscaling method, see Yamazaki et al., 2011).



175

Figure 1: Simplified schematic diagrams of (a) flood-hazard map generation, (b) correction of bias of GCM runoff, and (c) RP value estimation via the lookup method.

2.3 Future flood-depth estimation

180 In this study, two methods of estimating future flood depth were compared. The two methods are summarized in Sections 2.3.1 and 2.3.2.

2.3.1 Runoff-correction method

The runoff-correction method used bias-corrected GCM runoff for future simulation and calculated future flood depths corresponding to specific return periods through direct application of extreme-value analysis to the simulated flood depth time series. We investigated whether realistic future-hazard maps could be generated through bias correction of input runoff data for CaMa-Flood. The procedure followed after CaMa-Flood simulation is the same as the reanalysis-based method described in Section 2.2. We generated historical hazard maps using bias-corrected runoff from the historical period to validate the reliability of the runoff-correction method.

Bias correction was applied ~~using the trend preserving method (Hempel et al., 2013) through additive correction of the monthly mean runoff~~ with runoff from the reanalysis data, ~~which is referred to Hempel et al., 2013.~~ Figure 1(b) shows a simplified schematic diagram of the bias-correction process for input runoff data. Specifically, the ~~long-term averages 35-year (1980–2014) averages~~ of monthly runoff from the reanalysis data and GCM were calculated (Equation (1)), and a constant offset C, equal to the difference from the long-term average, was set for each month.

$$C_j = (\sum_{i=\text{starting year}}^{\text{end year}} R_{ij}^{\text{Reanalysis}} - \frac{\sum_{i=1980}^{2014} R_{ij}^{\text{GCM}}}{\text{length of years}} - \sum_{i=\text{starting year}}^{\text{end year}} R_{ij}^{\text{GCM}}) / (\text{length of years}) \quad (1)$$

where $R_{ij}^{\text{Reanalysis}}$ indicates Reanalysis_Runoff and R_{ij}^{GCM} indicates GCM_Runoff_Ori (i and j denote the year and month, respectively). This value was used for full time-series analysis of the GCM under a future climate (Equation (2)).

$$\widehat{R}_{ij}^{\text{GCM}} = C_j + R_{ij}^{\text{GCM}} \quad (2)$$

where R_{ij}^{GCM} and $\widehat{R}_{ij}^{\text{GCM}}$ are GCM_Runoff_Ori and GCM_Runoff_BC, respectively.

~~The trend preserving method has been used in many studies, including The Inter Sectoral Impact Model Intercomparison Project (ISI-MIP) (Warszawski et al., 2014), which provides a framework for comparing climate impact projections among sectors and scales. Willner et al., 2018 used the same method to estimate future climate related economic damage and showed that over the next 20 years, economic damage will increase by 17% globally, with China having the largest increase (82%).~~

~~Alternatives to the additive correction method include multiplicative correction method, which multiplies the ratio of GCM to the reanalysis data, and quantile-based mapping method (Panofsky and Brier 1968, Watanabe 2020), which obtains ordinal statistics from the reanalysis data and the GCM and creates an equation relating these statistics. In the future climate, the average monthly runoff may fluctuate significantly due to changes in the humid and arid zones and the timing of the wet and dry seasons caused by increasing temperatures. We selected the additive correction method because it is relatively insensitive to such fluctuations.~~

215 2.3.2 Lookup Method

In the lookup method, we first calculate the change in flood probability between the historical and future periods using the original GCM runoff simulation (i.e., we estimate historical RP equivalent to the magnitude of the targeted future RP). Then, the flood depth of the future target RP is estimated based on the flood depth of a historical flood of equivalent magnitude from the reanalysis runoff simulation. Because we use a lookup table to describe the relationship between flood depth and RP in the reanalysis simulation, this method is designated the lookup method. The aim of the lookup method is to use the GCM-based simulation results to calculate the relative change in RP, relying on the higher accuracy of the reanalysis simulation for absolute flood depth. The calculation process is illustrated in Figure 1(c) and the detailed procedures are as follows. (1) The extreme-value analysis described above is applied to the river water levels obtained using Reanalysis_Runoff and a lookup table is calculated (river water levels corresponding to ~~RPRPs~~ RPRPs of 2-~~to~~-1000 years) for each grid. (2) Extreme-value analysis is also applied to the river water levels obtained with GCM_Runoff_Ori under the historical climate and a lookup table is calculated for each grid. (3) Next, the target RP river water levels under the future climate are calculated by applying extreme-value analysis to the river water levels calculated from GCM_Runoff_Ori under the future climate. Then, with reference to the lookup table of river water levels created in step (2), the RP under the historical climate corresponding to the target RP water levels for the future climate is calculated. (4) Then, for each grid, the water level corresponding to the RP determined in (3) is obtained from the reanalysis lookup table of water levels created in step (1). (5) If a reverse slope is present in the water-level distribution created in (4), the reverse slope is revised, downscaling is conducted, and the result is used as the target RP hazard map for the future climate.

As noted above, the lookup method uses only the statistical frequency of flooding calculated using the GCMs and the value calculated from the reanalysis data is used to determine inundation depths corresponding to that frequency. As the lookup method does not use GCM_Runoff_BC and thus avoids the uncertainties associated with bias correction, including questionable results of bias correction for extreme events (Alfieri et al., 2017; Huang et al., 2014), several previous studies have employed this technique (Hirabayashi et al., 2013; Hirabayashi et al., 2021). [Alfieri et al., 2017 used the lookup method to estimate future affected population and damage by flood using historical flood hazard maps coupled with frequency changes under future climate scenarios.](#)

240 3 Results

The results obtained using the runoff-correction and lookup methods were compared from the following two perspectives. First, differences between the two methods were analyzed using a single GCM for runoff at the global scale, and the mechanisms underlying the observed differences were examined. Second, we compared the results obtained using multiple GCMs for runoff and assessed the uncertainty and robustness of the two methods.

245 3.1 Comparison of methods for generating future-hazard maps

We created a global reference historical hazard map based on reanalysis runoff data and a future-hazard map using the runoff-correction and lookup methods. Figure 2 shows the flood depths at 6-arcmin resolution prior to downscaling for the purpose of visualization. Here, we present the results of the 100-year RP hazard map from IPSL-CM6A-LR, which is the Coupled Model Intercomparison Project Phase 6 (CMIP6, Eyring et al., 2016) GCM that showed the maximum bias relative to reanalysis data among nine GCMs tested. Figures 2(b)–(c) show that the direction of change from the reference historical hazard map was the same with both methods for many rivers. Notable differences were found in northern parts of the Sahara Desert, parts of North America (around the Mississippi and Missouri rivers) and around the Amazon River, where the two methods showed opposite change trends. Both the runoff-correction and lookup methods used the reanalysis data as reference data to handle errors in GCM-output runoff. Therefore, the change trends from the reference historical hazard map were expected to be in the same direction. The future-hazard maps produced through the two methods showed opposite trends in changes compared to the reference hazard map, ~~implying~~indicating that one of the methods may be unable to account properly for changes in future flood ~~riskshazards~~ when reanalysis data are used as the historical reference dataset.

For detailed analysis, we created hazard maps that focused on several river basins and examined the validity of the two methods for constructing future-hazard maps. Prior to validating the future-hazard maps, we confirmed the validity of the historical hazard map through the runoff-correction method. The following two river basins were selected for detailed discussion in this paper: the Mekong River basin (specifically, the Chi-Mun River, a tributary of the Mekong River, Figure 3), where the two methods showed the same trend under a future climate, and the Amazon River basin (upstream of Manaus, Figure 4), where the two methods showed opposite trends. In the runoff-correction process, the climatology of monthly average GCM runoff for each grid was corrected toward the climatology of the monthly average reanalysis runoff; this step reduced the absolute runoff errors in the GCM. Therefore, the historical hazard map constructed using the runoff-correction method was expected to be similar to the reference historical hazard map. As shown in Figure 3(a)–(c), the Chi-Mun River historical hazard map produced using the runoff-correction method was most similar to the reference hazard map. However, underestimation for the Amazon River relative to the reference hazard map remained after bias correction (Figure 4(a)–(c)). Bias-corrected reanalysis runoff using monthly climatology produced a significant difference in the hazard map compared to the map based on reanalysis runoff.

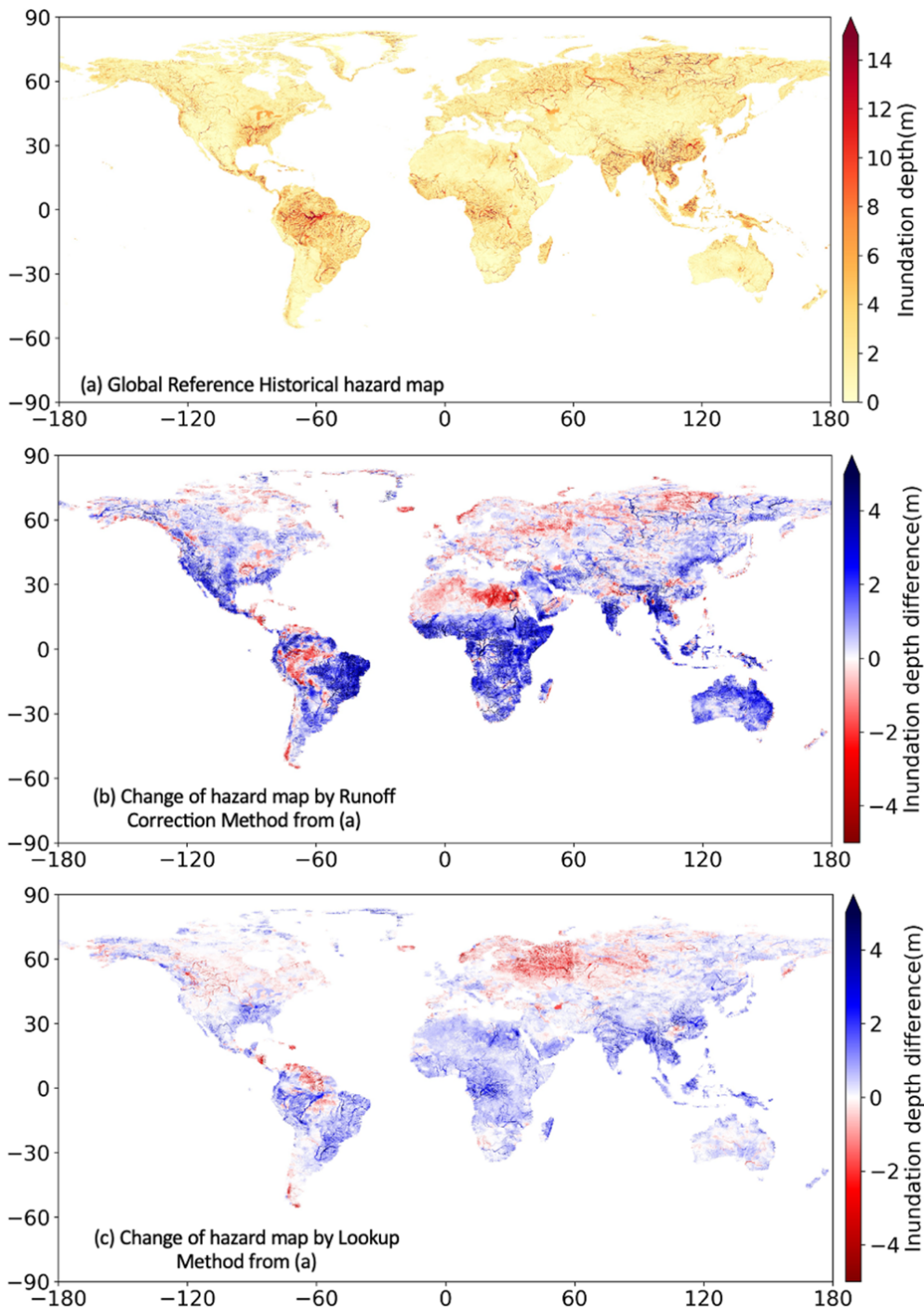


Figure 2: 100-year RP inundation depth distributions for (a) global reference historical hazard map, (b) future hazard changes obtained using the runoff-correction method (using IPSL-CM6A-LR) relative to (a), and (c) future hazard changes obtained with the lookup method (using IPSL-CM6A-LR) relative to (a).

275

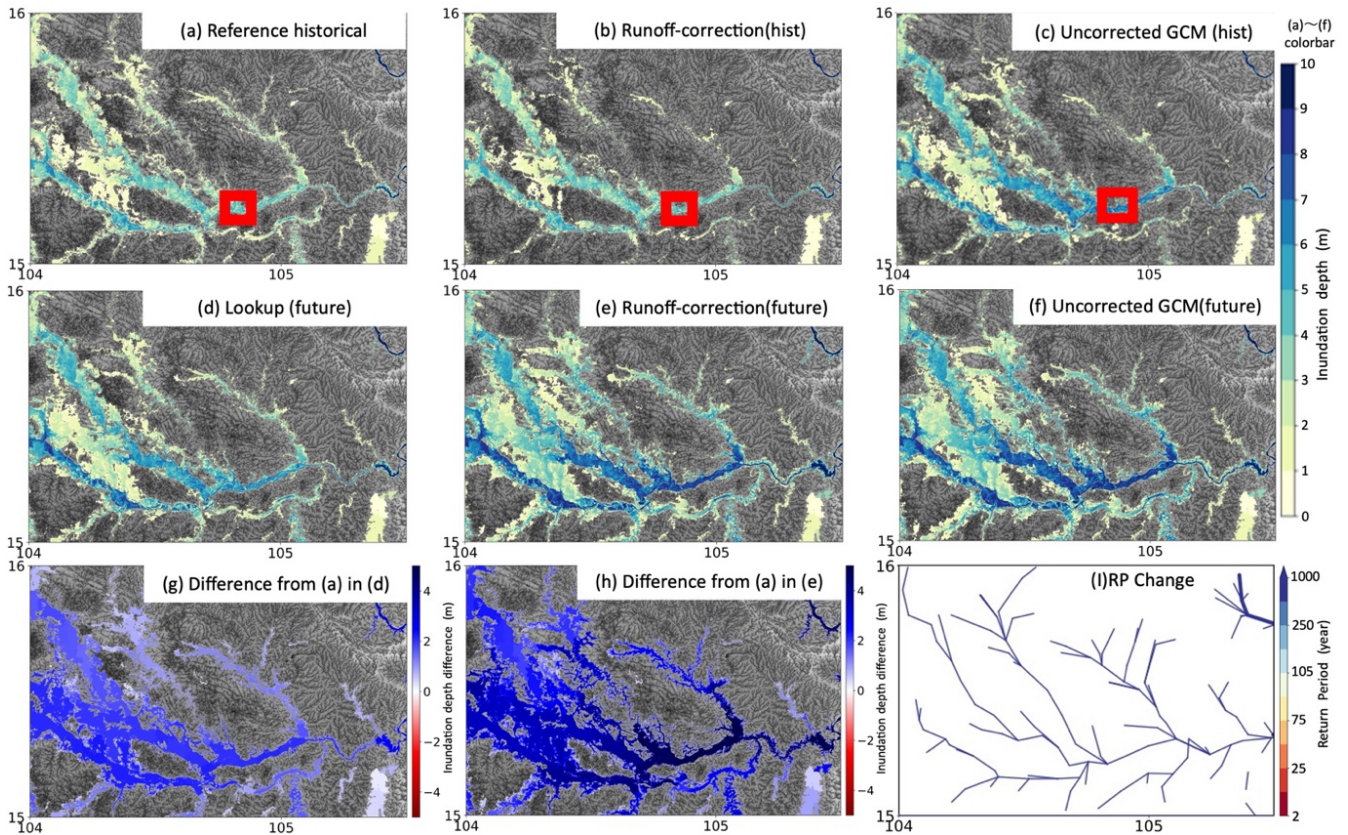


Figure 3: 100-year RP hazard map for the Chi-Mun River basin (using the IPSL-CM6A-LR CMIP6 GCM).

(a) Reference historical hazard map (based on reanalysis data), (b) hazard map constructed using the runoff-correction method (historical), (c) hazard map based on uncorrected GCM runoff (historical), (d) hazard map constructed using the lookup method, (e) hazard map constructed using the runoff-correction method (future), and (f) hazard map based on uncorrected GCM runoff (future). (g–h) Differences from the reference historical hazard map in (g) the hazard map obtained with the lookup method and (h) the hazard map obtained using the runoff-correction method (future), and (i) historical return period (RP) of river water level corresponding to the 100-year RP in the future. Red boxes in (a)–(c) indicate the location of the GRDC Ubon station (104.8617°E, 15.2217°N)

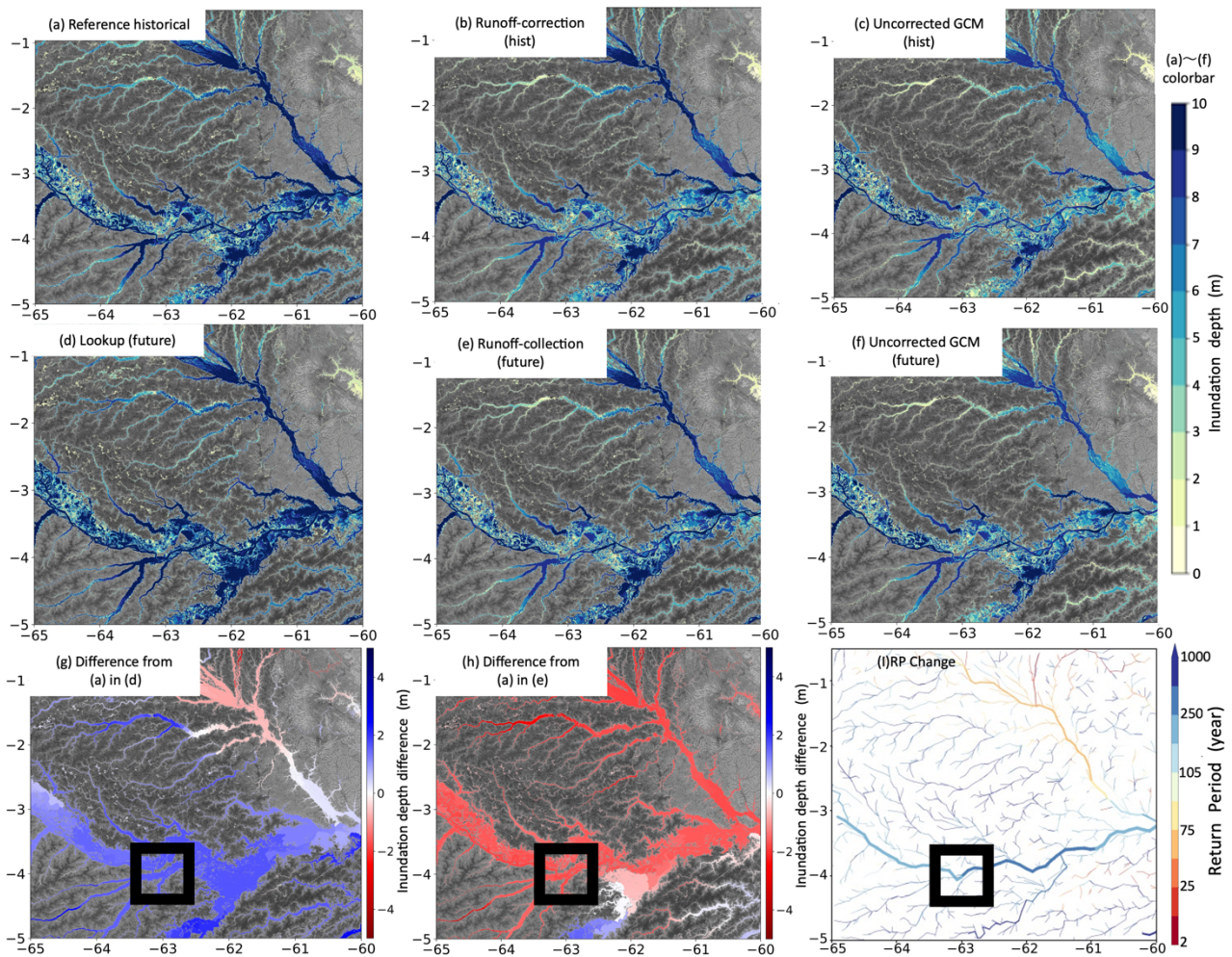


Figure 4: 100-year RP hazard map in Amazon River basin (using IPSL-CM6A-LR of CMIP6 GCM)

(a) Reference historical hazard map (based on reanalysis data), (b) hazard map constructed using the runoff-correction method (historical), (c) hazard map based on uncorrected GCM runoff (historical), (d) hazard map constructed using the lookup method, (e) hazard map constructed using the runoff-correction method (future), and (f) hazard map based on uncorrected GCM runoff (future). (g–h) Differences from the reference historical hazard map in (g) the hazard map obtained with the lookup method and (h) the hazard map obtained using the runoff-correction method (future), and (i) historical return period (RP) of river water level corresponding to the 100-year RP in the future. Black boxes in (g)–(h) indicate the location of the GRDC Itapeua station. (63.0278°W, 4.0578°S).

The results for a future climate were assessed; as the historical climate was not corrected as expected, the future climate might have followed the same trend and failed to meet expectations. For both the Chi-Mun and Amazon rivers, using the GCM without bias correction, the shift from the historical (Figure 3(c), 4(c)) to future climate (Figure 3(f), 4(f)) implied showed that flood risk hazard would increase in the future. For the Chi-Mun River, as shown in Figure 3(g) and 3(h), the future-hazard maps constructed using the runoff-correction method and lookup method showed increases in the

inundation areas and depths compared to the reference historical hazard map (Figure 3(a)). In contrast, for the Amazon River, Figure 4(h) shows that the inundation depths on the hazard map obtained using the runoff-correction method were less than the depths on the reference historical hazard map, implying that the runoff-correction method may be unable to account for the increased ~~risk~~hazard of future flooding predicted by the GCM. On the other hand, Figure 4(g) shows that inundation depths on the hazard map based on the lookup method were greater than those on the reference historical hazard map, ~~implying~~suggesting that the lookup method was able to produce hazard maps that were consistent with the changes in flood ~~risk~~hazard under a future climate projected by ~~the GCMs~~CaMa-Flood simulations with GCM runoff input. In the subsequent sections, we explore why bias correction was less effective than expected for the Amazon River.

We investigated the reasons for the differences between the reference historical hazard map and the historical hazard map constructed using the runoff-correction method. Figures 5 and 6 show the monthly mean discharge climatology, exceedance probability curve and Gumbel distributions for the annual maximum river water levels based on CaMa-Flood simulation results using each runoff type as input values. For reference, we show the cumulative distribution function for annual maximum river water levels based on the lookup method in Figure 5(c)–(d) and Figure 6 (c)–(d). The comparison sites were Global Runoff Data Centre (GRDC) observation sites, specifically Ubon station (104.8617°E, 15.2217°N) in the Mekong River basin and Itapeua station (63.0278°W, 4.0578°S) in the Amazon River basin. The climatology of monthly average GCM runoff for each grid was corrected toward the climatology of the reanalysis dataset. Therefore, monthly average discharge data were expected to be similar to the reanalysis data. In addition, the annual maximum river water levels were corrected, which was necessary for application of extreme-value analysis of the annual maximum river water levels when constructing the hazard maps. For these reasons, we drew an exceedance probability curve and the Gumbel distribution for the annual maximum river water levels and checked whether the values were corrected to the same scale as the reanalysis data (Figure 5b). Prior to analysis of the Amazon River, where bias correction did not perform as expected, the Chi-Mun River was assessed. As shown in Figure 5(a)–(d), the uncorrected GCM (historical data; green dotted line) showed different behavior from the reanalysis data (black line), but the bias-corrected GCM (green line) data were similar to the reanalysis data, as expected.

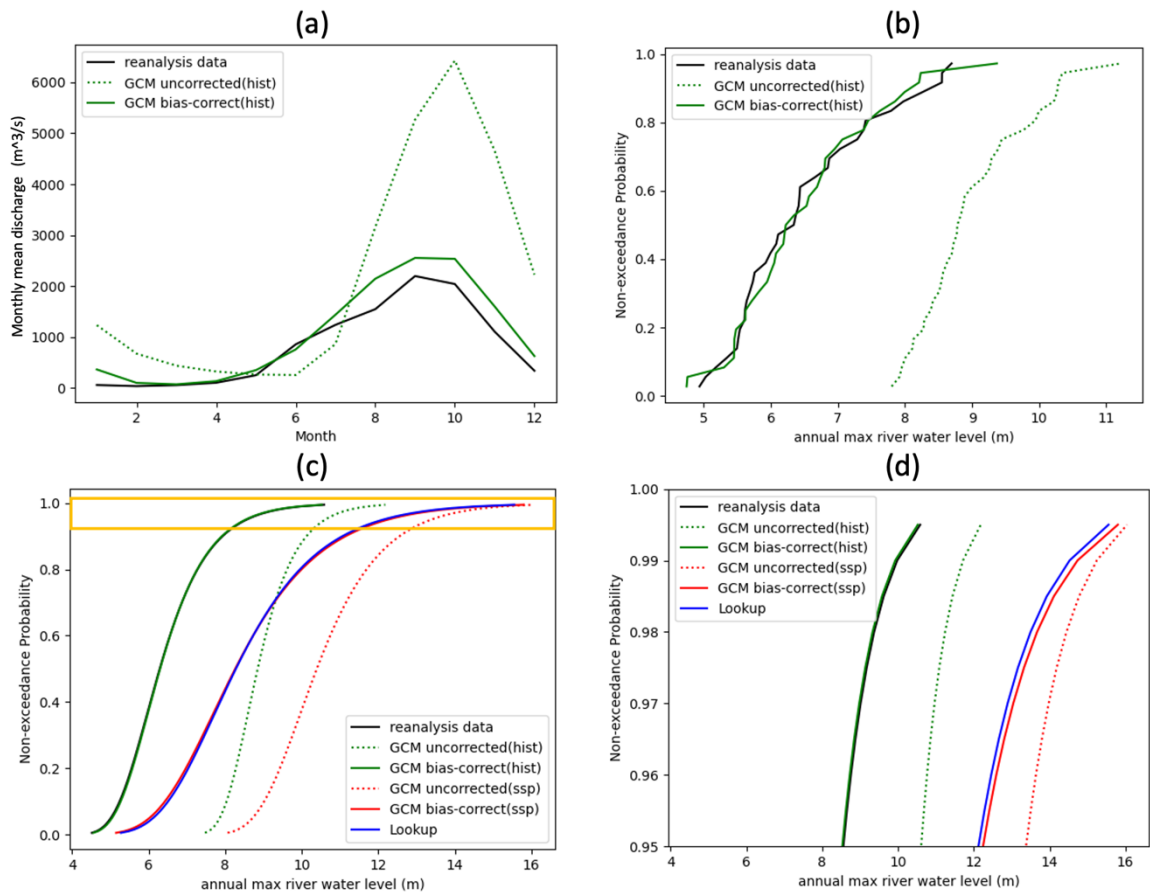
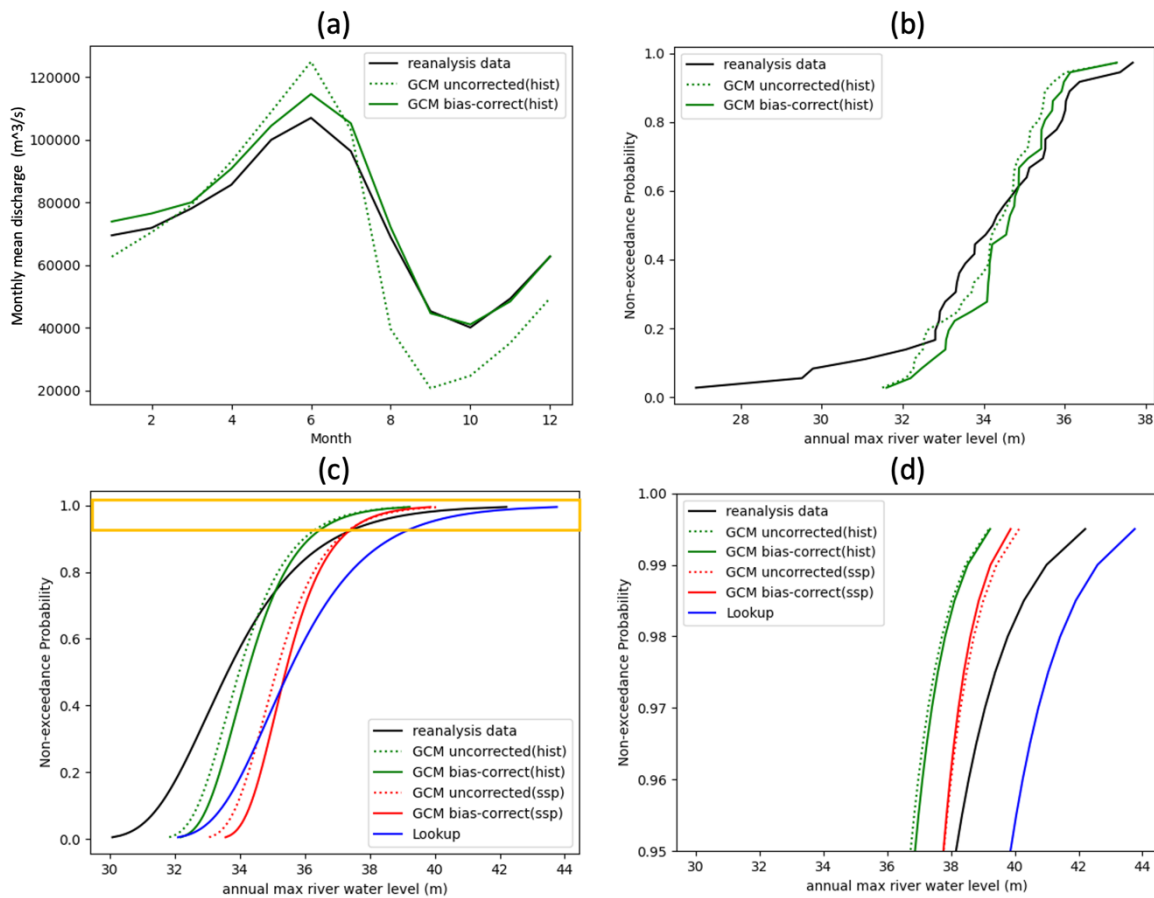


Figure 5: Comparison of reanalysis data, uncorrected GCM, bias-corrected GCM and the lookup method at GRDC Ubon station. (104.8617°E, 15.2217°N). (a) Climatology of monthly mean discharge, (b) Exceedance probability curve of the annual maximum river water levels from 1980 to 2014, (c) Gumbel distribution of annual maximum river water levels, and (d) enlarged view of the orange square in (c).

330



335 **Figure 6: Comparison of reanalysis data, uncorrected GCM, bias-corrected GCM and the lookup method at GRDC Itapeua station (63.0278°W, 4.0578°S). (a) Climatology of monthly mean discharge, (b) Exceedance probability curve of annual maximum river water levels from 1980 to 2014, (c) Gumbel distribution of annual maximum river water levels, and (d) enlarged view of the orange square in (c).**

340 Following analysis of the Chi-Mun River, a similar comparison was conducted for the Amazon River. Figure 6(a) shows that the climatology of monthly mean discharge of the bias-corrected GCM (historical) was similar to the reanalysis data, which was also as expected. On the other hand, the exceedance probability curve and Gumbel distribution of the annual maximum river water levels (Figure 6(b)–(d)) changed little with bias correction. The tail portion of the bias-corrected GCM (historical) was undervalued compared to the reanalysis data, implying that bias correction did not function as expected for extreme values associated with the hazard map, even under the historical climate. The runoff-correction method corrected for bias in GCM runoff data using monthly climatology based on reanalysis runoff values. However, as demonstrated by the Gumbel distributions in Figure 6(c), the bias of the GCM differed with the return period, indicating that the bias of extreme

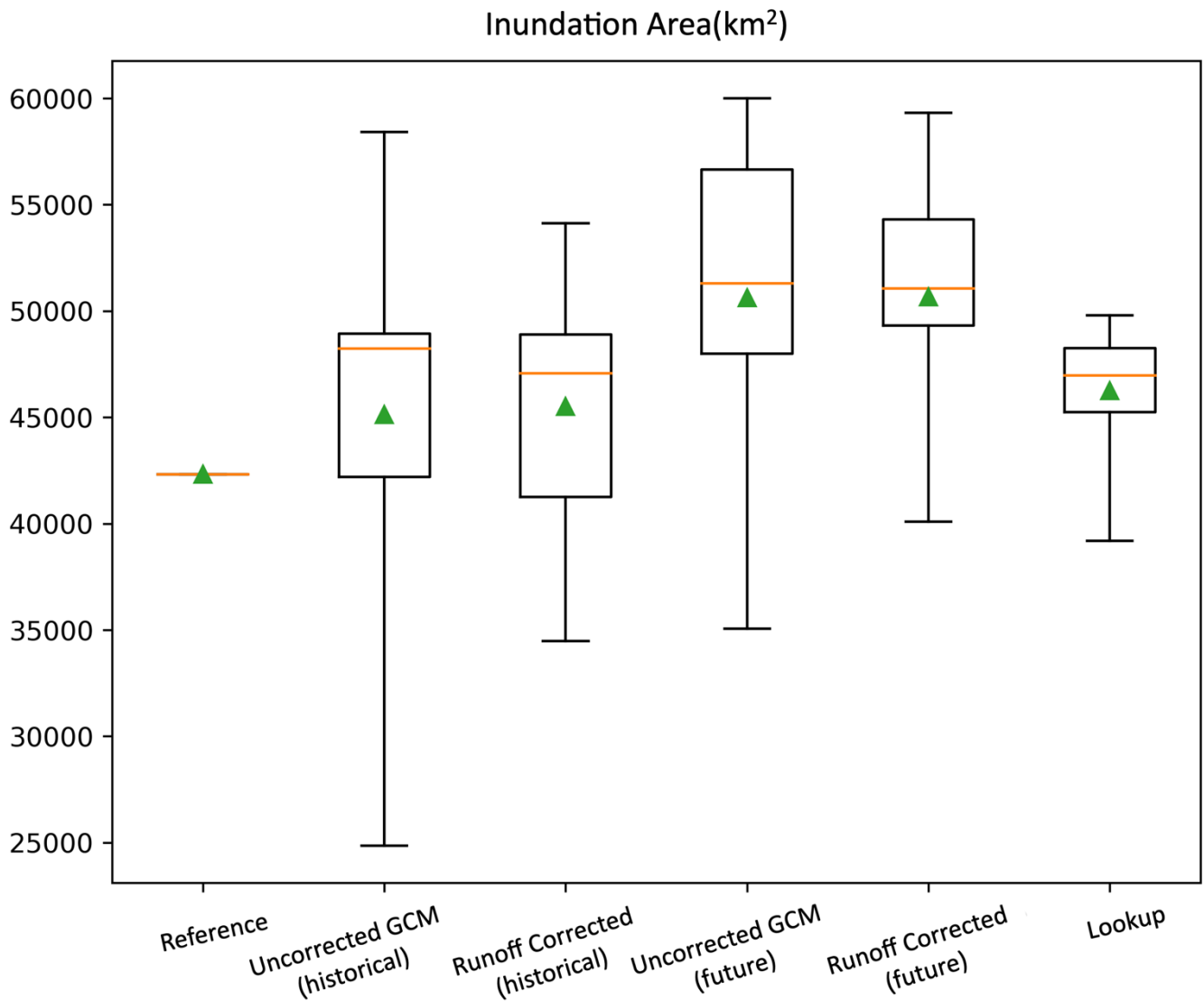
345

values was not the same as that of the mean value. If the bias differs sharply among return periods, the runoff-correction method may not perform as expected for extreme values. The tail portion of the bias-corrected GCM (future) was also smaller than the tail for reanalysis data (Figure 6(d)), ~~implying~~ indicating that the direction of the change in the future hazard obtained using the runoff-correction method relative to the reference reanalysis-based hazard map were inconsistent with the ~~changes~~ change projected by ~~the GCMs~~ CaMa-Flood simulations with GCM runoff input. On the other hand, as shown in Figure 6(c)–(d), the lookup method accounted for changes in flood ~~risk~~ hazard under the future climate projected by ~~the GCMs~~ CaMa-Flood simulations with GCM runoff input. As described in Section 2.3.2, the lookup method uses the relative change in RP among GCMs, and can modify extreme values accordingly.

We recognized that bias correction of runoff using monthly climatology based on reanalysis runoff data produced large differences in the hazard map compared to the map based on reanalysis runoff. These differences arose because the bias of extreme values differed from that of the mean value, ~~implying~~ suggesting that this bias correction procedure may not be suitable for extreme values on the hazard map. For extreme values of GCM runoff and river water levels, the results were not reliable even after bias correction, and such values may not be suitable for constructing hazard maps.

3.2 Analysis of hazard maps generated with multiple GCM runoff datasets

In this section, we compare the inundation areas of future-hazard maps constructed using two methods with nine GCMs of CMIP6. The target area was the Chao Phraya River basin and surrounding rivers (98°E to 103°E, 12°N to 18°N). As shown in Figure 2, the change direction ~~of change~~ from the reference historical hazard map was the same ~~with~~ for both methods ~~for in the~~ Chao Phraya River basin and surrounding rivers when IPSL-CM6A-LR was used. In this section, we used other GCM models to test whether the two methods could produce hazard maps consistent with the future changes in flood ~~risk~~ hazards predicted using the uncorrected GCM. Here, we compare the inundation areas of the 100-year RP hazard map among nine CMIP6 GCMs (Figure 7).



370 **Figure 7: Box plot of inundated area (km^2) estimates near the Chao Phraya River obtained using the runoff-correction method and lookup method. Whiskers show minimum and maximum values, boxes show 25th and 75th percentile values, orange lines show the median (50th percentile) value and green triangles show the average value.**

375 First, we examined whether the runoff-correction method for the historical period provided results similar to the reference reanalysis-based historical hazard map. The multi-model average inundated area for the nine models shown in Figure 7 indicates that the inundated area for the historical period was corrected from $45,124 \text{ km}^2$ to $45,508 \text{ km}^2$ using the runoff-correction method, and thus remained almost unchanged. Comparing the effects of bias correction for each model (Table S1 and Figure S1), we observed that MPI-ESM1-2 became closer to the reference historical hazard map than the uncorrected

380 GCM ~~by using when~~ the runoff-correction method was used, while MIROC6 and GFDL-CM were corrected away from the reference values. These results ~~imply suggest~~ that the inundation areas under the historical climate were not corrected as expected by the runoff-correction method for most GCMs. One reason for this finding is that, as noted above for the Amazon River (Figure 6), the bias-correction process did not properly correct for the Gumbel distribution of river water levels because the bias of extreme values was not the same as that of the mean values, and therefore bias correction did not address the extreme values on the hazard map. As shown in Figure 7 and Table S1, for the Chao Phraya River basin and surrounding
385 rivers, the effect of bias correction was also small under the future climate in many models (using the runoff-correction method, the inundated areas for nine GCMs were corrected from 35,054–60,000 km² to 40,085–59,320 km²). For example, as shown in Table S1, when using MPI-ESM1-2-HR, despite the increase in inundation area from the historical to future period for the uncorrected GCM, the inundation area of 40,085 km² obtained with the runoff-correction method was smaller than the corresponding area on the reference historical hazard map (42,321 km²), ~~implying suggesting~~ that bias correction did
390 not improve the GCM hazard map as expected.

The results of the lookup method were also examined. The lookup method is relatively unaffected by bias in the GCM, as the rate of change from the historical period to the future period is the key factor. If an inundated area increases from the historical climate to the future climate based on the uncorrected GCM, the inundated area should be larger on a hazard map produced using the lookup method than on the reference historical hazard map. Table S1 shows that the inundation areas
395 obtained using the lookup method were consistent with the historical and future inundation changes of the uncorrected GCM. For example, using INM-CM5, the inundation area decreased between the historical and future periods based on the uncorrected GCM, ~~implying indicating~~ a decrease in future flood ~~risk hazard~~. As shown in Table S1 and Figure S2, the inundation area was smaller for INM-CM5 using the lookup method than on the reference historical hazard map, indicating that the changes in future ~~risk flood hazard~~ predicted by the GCMs were properly considered.

400 The results from multiple GCMs implied the following points of discussion. For most of the nine GCM models, the runoff-correction method did not correct the 100-year RP inundation areas under the historical climate as expected, and some GCMs were corrected away from the reanalysis data. Therefore, GCM-specific biases are unlikely to have been corrected on these hazard maps for the future climate. For example, the results from MPI-ESM1-2-HR ~~implied suggested~~ that the runoff-correction method may not account for future ~~climate risk flood hazard~~ projected by ~~the CaMa-Flood simulations with~~ GCM
405 ~~runoff input~~ in terms of the ~~change~~ direction ~~of change~~ from the reference historical hazard map. On the other hand, the lookup method did produce hazard maps consistent with the changes in flood ~~risk hazard~~ under the future climate projected by ~~the GCMs CaMa-Flood simulations with GCM runoff input~~. Regarding the uncertainties in future flood ~~risk hazard~~ predictions, the divergence of the runoff-correction method includes the divergence of multiple GCMs in the future as well as the divergence associated with the bias of extreme values relative to that of the mean value in each model. The latter
410 divergence reflects the model structure, specifically the systematic bias within each model. The lookup method removes this bias, and therefore it is expected to have smaller uncertainties than the runoff-correction method.

4 Discussions

4.1 Which method is more ~~convenient~~reasonable for generating future-hazard maps?

In this study, we compared the runoff-correction and lookup methods, and investigated the causes of differences in hazard maps constructed using the two methods. Based on the results, we suggest using the lookup method with reanalysis data as a reference for the following three reasons.

First, using a hazard map based on reanalysis runoff data as reference is ~~convenient~~reasonable. Reanalysis runoff values are based on historical weather observations, and thus a hazard map created using reanalysis runoff is expected to show good consistency with actual flood ~~risk~~hazard. The performance of global river model simulations using reanalysis runoff values has been evaluated through comparison with observed data (e.g., time series of discharge, water level, and inundation extent; Yamazaki et al., 2011, 2014). Hazard maps generated through global river model simulations with reanalysis runoff have been validated in numerous studies. Bernhofen et al., 2018 validated several global flood models, including CaMa-Flood, which was used in this study. The accuracy of hazard maps produced using global flood models has been validated through comparisons with existing flood-hazard maps (e.g., CaMa-Flood results in Japan were validated by Kita et al., 2022, and GloFAS model results were validated in Europe and the Mediterranean by Dottori et al., 2022).

Second, the lookup method can produce hazard maps that are consistent with projected changes in future flood ~~risk~~hazard based on ~~GCMs~~CaMa-Flood simulations with GCM runoff input, as demonstrated by the results of this study, discussed in Section 3. On the other hand, the direction of the change in future hazard (increase or decrease) obtained using the runoff-correction method relative to the reference reanalysis-based hazard map may be inconsistent with the changes projected by ~~the GCMs~~CaMa-Flood simulations using GCM runoff input, as described for the Amazon River in Section 3. This result suggests that simple bias-correction techniques of GCM data, i.e., additive correction to monthly mean runoff, may not be suitable for use in flood hazard estimation and that various other bias-correction techniques that focus on extreme values should be tested. The lookup method also ~~has the advantage of facilitating~~facilitates research on the efficient construction of future climate hazard maps, ~~as because historical hazard maps can be prepared separately from the estimation of future frequency change. This is beneficial for two aspects: 1) it allows for improvement of the reanalysis hazard map by upgrading the model, and the estimated changes due to climate change can be considered separately; 2) it allows for use of multiple reference hazard maps by using different reanalysis-based simulations.~~

Third, the use of GCM historical climate simulations as reference data introduces problems. As noted in Section 3.2, for most of the nine GCM models, the runoff-correction method did not correct the 100-year RP inundation area as expected based on the historical climate, and some GCMs were corrected away from the reanalysis data, indicating that the accuracy of bias-corrected GCM historical climate data is poor. ~~In addition to evaluating the future climate hazard map itself, many situations require the future hazard map to be considered in comparison with a historical climate hazard map (Hirabayashi et al., 2021 and Taguchi et al., 2022). Using reanalysis data to construct the hazard map for the historical climate makes such analyses easier. However, when GCMs are used for the historical climate, the inundation area of historical climate is~~

445 ~~calculated individually for each GCM; in such cases, multiple results are referenced, which complicates mapping and comparison.~~

For these reasons, we consider that the lookup method with reanalysis data as reference data is the most reasonable method of creating future-hazard maps for flood risk assessment.

4.2 Validity of reverse slope revision

450 As noted in Section 2.2, we revised the reverse slope during the process of hazard_map generation in this study. For actual physical processes, if slope reversal occurs, the backwater effect causes the downstream water level to propagate upstream (backflow), which increases the flood ~~risk~~hazard. A reverse slope is a technical problem in extreme-value analysis. In the process of calculating the water levels for the targeted return period, we fitted a Gumbel distribution ~~to~~on each of CaMa-Flood 6-arcmin grid, allowing the upstream water surface elevation to be lower than the downstream elevation, resulting in
455 an unrealistic reverse water slope. If such a reverse slope is not revised and the backwater effect is not considered, the inundation depth distribution may not be physically reasonable and flood ~~risk~~hazard may be underestimated.

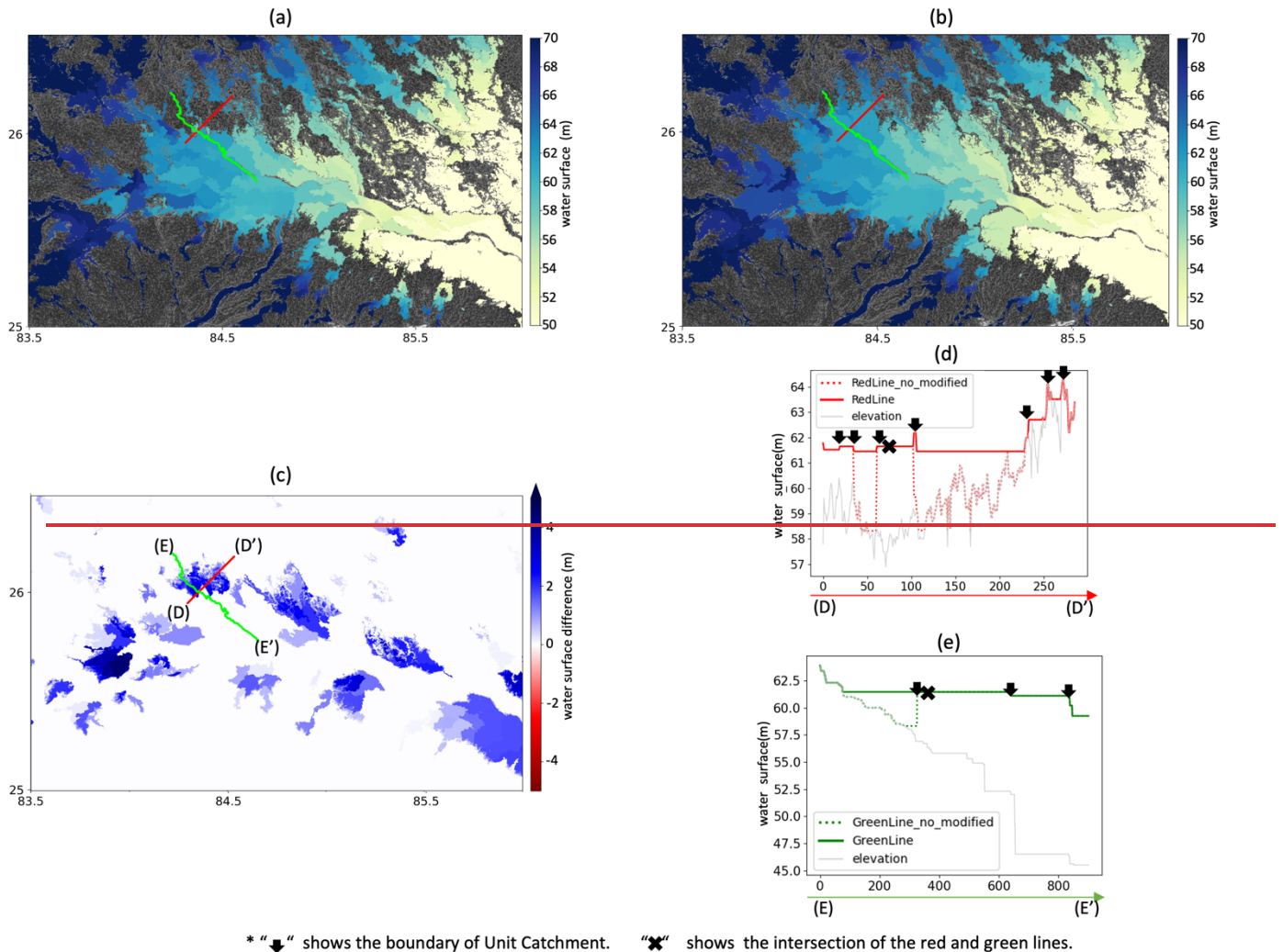
Therefore, we analyzed the effect of revising the reverse slope and present our findings in this section (reverse-slope revision is referred to as Backwater_Modification in this section). Prior to analysis of the Backwater_Modification effect, the occurrence of slope reversal was checked using the water surface elevation distributions from the reanalysis data (without
460 Backwater_Modification) and the lookup method (without Backwater_Modification). The water surface elevation distribution obtained through application of extreme-value analysis to each grid water level showed that many reverse slopes occurred, although the majority were small (with 6-arcmin global resolution, 30,000 grids for the reanalysis data and 37,000 grids for the lookup method). Reverse-slope grids occurred frequently at confluences, where the backwater effect can occur, and thus reverse slope revision is physically reasonable.

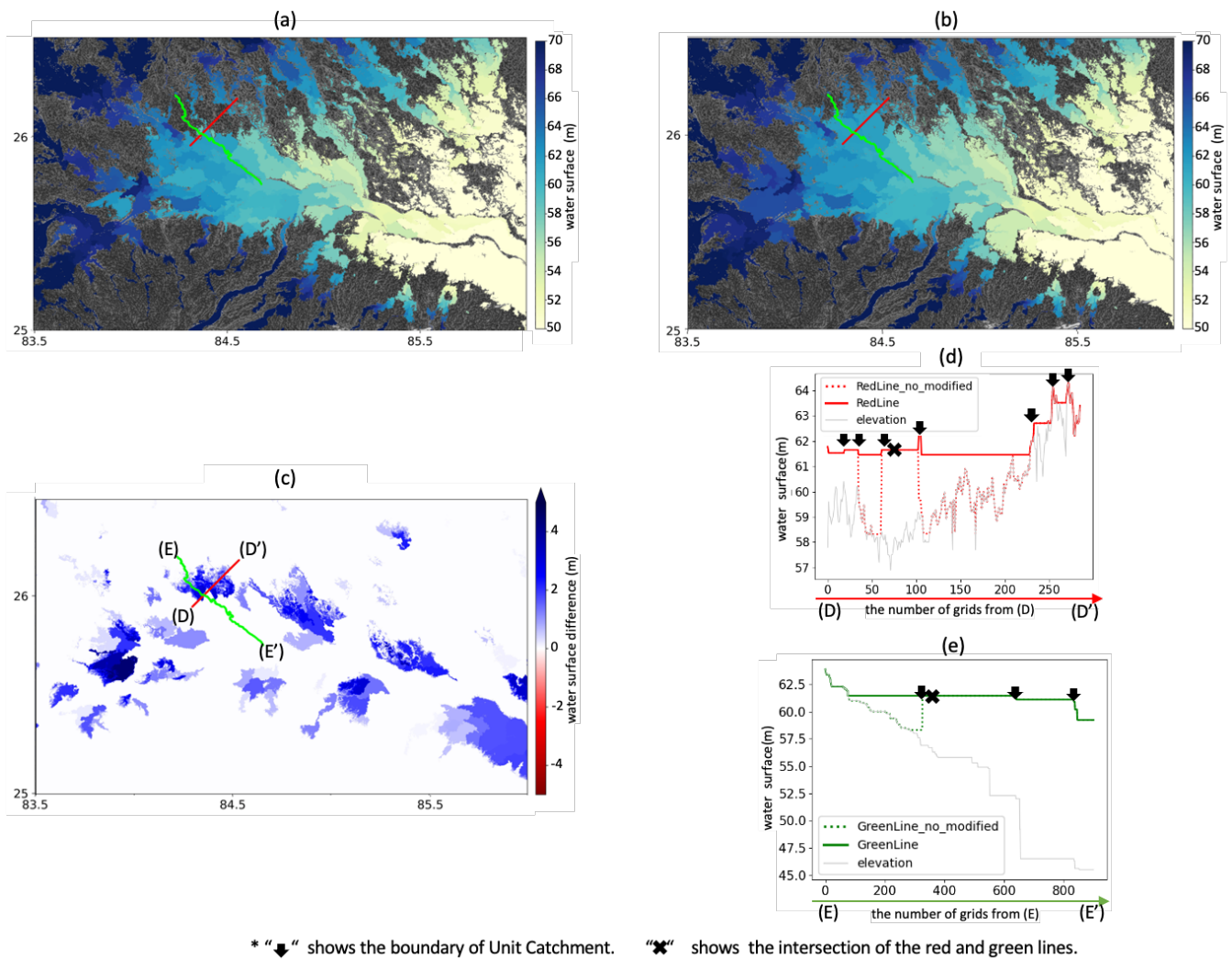
465 We applied Backwater_Modification to the water surface elevation and assessed the impact of this modification. The area of 83.5°E to 86°E and 25°N to 26.5°N, where many reverse slopes are shown in Figure S3(b), was the target area for this process. The water surface distribution was created by adding elevation to the 100-year RP inundation depth distribution. As shown in Figure 8(a)–(b), the reverse slope was eliminated by Backwater_Modification. In addition to checking the water surface distribution, we drew the water surface on a cross-section of the river and a section from upstream to downstream
470 (red and green lines in Figure 8) to check whether the water surface was smoothly revised. Figure 8(d) shows that the water surface in the cross-section of the river tended to change significantly at the boundary of the unit catchment without Backwater_Modification; however, with Backwater_Modification the water surface distribution was smooth. In addition, as shown in Figure 8(e), for the water surface section from upstream to downstream, the reverse-slope condition was resolved, leading to a water surface distribution that was physically reasonable.

475 Please note that it is possible that it would be overestimated by applying Backwater_Modification because it performs corrections at all reverse slope occurrence points. Reversed water surface slopes can occur in conventional flood hazard maps, given that these maps are not always constructed by a single flood event simulation. Therefore, we conducted

480 additional validation to investigate whether Backwater Modification should be applied. As shown in Text S1, additional validation of Backwater Modification was conducted. Specifically, we compared the CaMa-Flood-hazard maps obtained using Backwater Modification with hazard maps published in Japan containing information about inundation depths. The comparison results (Table S2 and Figure S4) showed that the inundation area was more realistic with Backwater Modification than without it. As noted above, if a reverse slope is present in the water surface level, revision using the method proposed in this study (Backwater Modification) would be appropriate.

485





490 **Figure 8: (a) Water surface distribution obtained using the lookup method without Backwater Modification; (b) water surface distribution obtained using the lookup method with Backwater Modification; (c) the difference in water surface level between (a) and (b); (d) water surface profiles along the red transects (river cross-section of the river); and (e) water surface profiles along the green transects (section along the flow direction (from upstream to downstream))**

4.3 Future changes in inundation area and the population affected within the inundation area

495 We analyzed the extent of differences in the estimates of future flood risk changes, specifically inundation area and the affected population within the inundation area depending on the implementation of bias correction or Backwater Modification and the method used to construct the hazard map. The flood-exposed population was estimated

500 based on the inundation map and the 2020 population density map (Gridded Population of the World; CIESIN, 2018). This map has 30-arcsec resolution, and therefore the 3-arcsec inundation map was aggregated to 30-arcsec resolution. Here, as in

505 Section 3, we present the results from the 100-year RP hazard map of IPSL-CM6A-LR, which is one of the nine CMIP6 GCM models. Based on the inundation area in Table 2, we found that the 100-year RP inundation area was ~~14.0~~18.4 million km² based on reanalysis runoff and 20.3 million km² based on uncorrected GCM runoff (future), indicating an increase of approximately ~~45~~10% compared to the historical climate. On the other hand, the 100-year RP inundation area reached 20.5 million km² using the runoff-correction method (relative to historical climate: ~~+46~~11%) and 19.~~17~~ million km²

510 using the lookup method (relative to historical climate: ~~+37~~7); thus, the difference in future flood risk estimates was up to ~~94~~%, depending on whether bias correction was applied and the construction method. Inundation areas with particularly high risk of inundation depths of 5 m or greater covered ~~1.32~~2 km² in the historical reference period and ranged from 3.~~04~~–4.2 km² under the future climate (relative to historical climate: ~~+124%–216~~57%–92%) for various methods, indicating a difference in future flood-risk estimates of up to ~~92~~35%, especially in high-risk areas. ~~The~~

515 ~~To evaluate the sensitivity of the inundation area and the affected population with and without the Backwater Modification, we examined the effects of Backwater Modification were then analyzed. As shown in~~ Table 2 ~~shows that~~, it increased the inundation area from ~~18.98~~19.49 million km² to 19.~~13~~67 million km² for the lookup method, an increase of about 0.~~15~~18 million km². Focusing on high-risk areas, the inundation area based on the lookup method increased from ~~2.85~~3.23 million km² to ~~2.98~~3.43 million km² with Backwater_Modification, an increase of approximately 0.~~15~~20

520 million km² in high-risk areas. ~~Notably, without~~Based on these results, applying Backwater_Modification, ~~led to the overall inundated area was underestimated by about 0.15 million km²~~creation of a physically reasonable hazard map as shown in section 4.2, and the corrected high-risk area was also underestimated by about 0.15 million km². Table 2 shows areas. We conclude that Backwater Modification is a necessary revision.

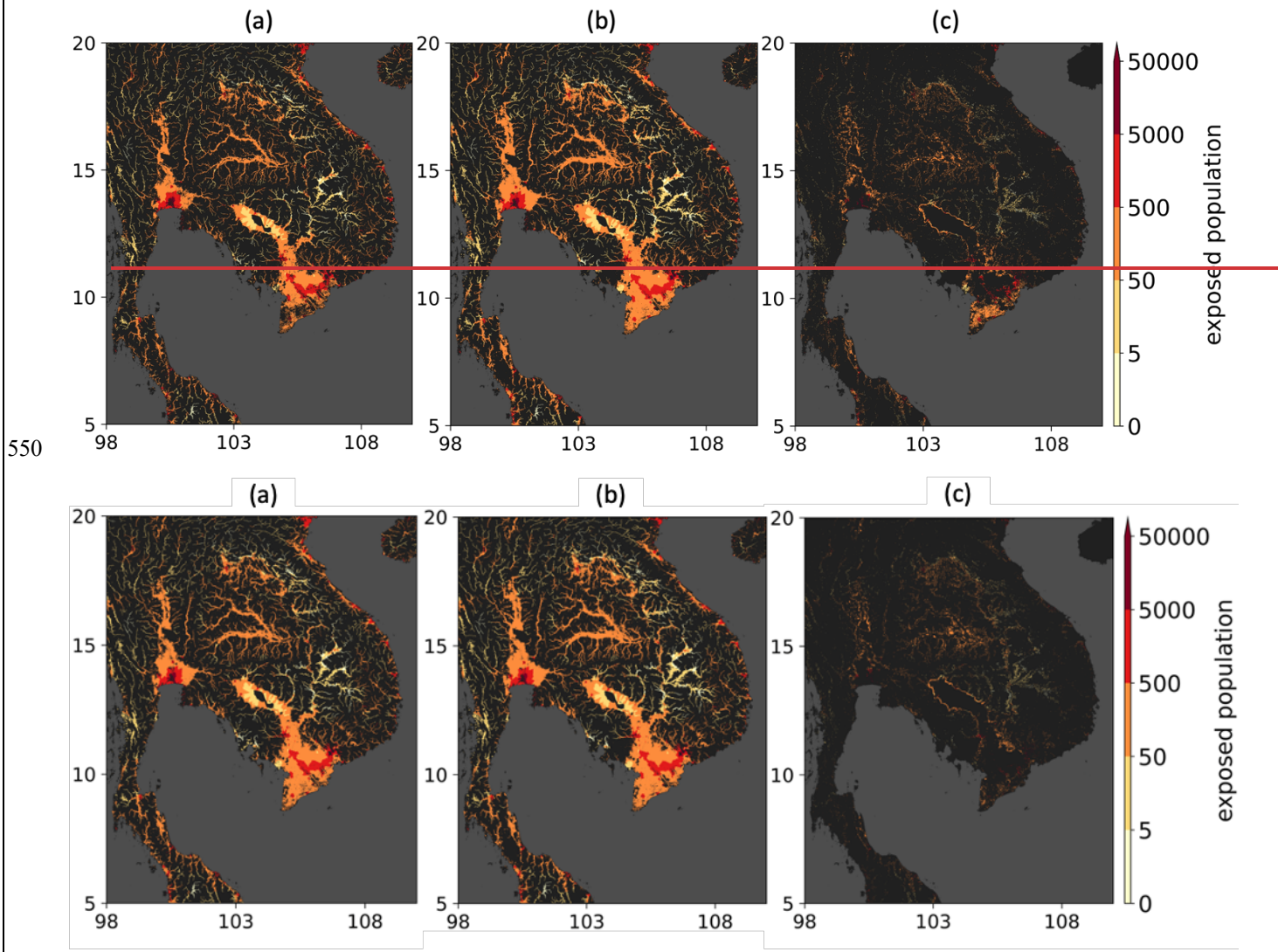
525 As discussed by Zhou et al., 2021, the spatial resolution of a flood hazard map is a particularly important determinant of its value for impact assessment. Smith et al. (2019) evaluated the affected population tended to be similar exposure to a 1-in-100 year flood in 18 developing countries, and found that decreasing the spatial resolution of the flood hazard map from 90 to 900 m increased the exposure by 51-94 % for different population of the inundated area-products. Although there is uncertainty involved in the choice of the spatial resolution of the flood hazard map, we selected 30-arcsec instead of 3-arcsec resolution to compare future flood hazard map construction methods on a global scale.

Table 2: Inundation area of the 100-year RP hazard maps and affected population from the 100-year RP hazard maps constructed using various methods; "_no_modification" indicates a map constructed without Backwater_Modification. These results were obtained using IPSL-CM6A-LR.

		Inundation Area (Unit: Million km ²)		Exposed Population (Unit: Million)	
		all	depth > 5m	all	depth > 5m
Historical Climate	Reference historical (Reanalysis)	14.00	1.33	1,269	158
Future Climate	GCM uncorrected	20.28	4.20	1,783	395
	Runoff Correction Method	20.45	4.02	1,802	406
	Lookup_Method_no_modification	18.98	2.85	1,755	352
	Lookup_Method	19.13	2.98	1,784	367

		Inundation Area (Unit: Million km ²)		Exposed Population (Unit: Million)	
		all	depth > 5m	all	depth > 5m
Historical Climate	Reference historical (Reanalysis)	18.38	2.19	1,625	216
Future Climate	GCM uncorrected	20.28	4.20	1,783	395
	Runoff Correction Method	20.45	4.02	1,802	406
	Lookup_Method_no_modification	19.49	3.23	1,821	417
	Lookup_Method	19.67	3.43	1,858	441

An alternative method for risk assessment under a future climate in areas where future-hazard maps have not been created is the use of hazard maps for historical climates to estimate future damage. We considered a method of future risk assessment that does not use future-hazard maps, i.e., the use of hazard maps created for historical climates and calculation of the exposed population based solely on future frequency changes. As shown in Table 2, the areas inundated by a 100-year RP flood in the future climate will differ from those inundated under the historical climate. Therefore, properly assessing flood risk under a future climate is not possible if the hazard map is fixed and only changes in frequency are considered. Table 2 indicates the total population living in the inundation areas modeled for the reference historical hazard map to be around 1.2763 billion. Using the fixed hazard map method, the affected population in the future climate would also be 1.2763 billion. However, population estimates of 1.80 billion with the runoff-correction method and 1.7886 billion with the lookup method were obtained in this study, implying that an affected population of around 0.52 billion may be overlooked if the hazard map is fixed and only changes in frequency are considered. As a specific example, we identified the affected population in the Chao Phraya River and Mekong River area, and Figure 9 shows the affected population in that area based on the 100-year RP hazard map. In that area, the total affected population based on the reference historical hazard map is 6375 million and the population obtained for the future-hazard map using the lookup method is 7982 million, indicating underestimation by approximately 167 million if the hazard map is fixed and only frequency change is considered (Figure 9(c)).



555 **Figure 9:** Affected population in the Chao Phraya River and Mekong River area based on the 100-year RP hazard map (obtained using IPSL-CM6A-LR). (a) Reference historical hazard map; (b) future-hazard map constructed using the lookup method; and (c) difference of (b)–(a), representing the population not currently affected by flooding that may be affected under the future climate.

5 Conclusions

In this study, we We explored several methods for constructing hazard maps under a future climate, including bias correction, and investigated which of these methods could produce a reasonable inundation depth distribution. The results imply suggest

560 that bias correction of runoff using monthly climatological data based on reanalysis runoff values produced a significant
difference in the hazard map compared to the map based directly on reanalysis runoff values, as the bias of extreme values
was not the same as that of the mean value. In addition, we found that the direction of the change in future hazard (increase
or decrease) obtained using the runoff-correction method relative to the reference reanalysis-based hazard map may be
inconsistent with the changes projected by ~~the GCMs. CaMa-Flood simulations with GCM runoff input. This result suggests~~
565 ~~that simple bias-correction of GCM data using the additive correction method to correct monthly mean runoff may be~~
~~unsuitable for flood hazard estimation, and that alternative bias-correction techniques should be tested (i.e. more focused on~~
~~extreme values).~~ On the other hand, we confirmed that the lookup method, which uses the statistical frequency of flooding
calculated by the GCMs and the reanalysis data for inundation depths corresponding to that frequency, ~~could~~
~~produce~~ produced hazard maps ~~that were~~ consistent with the flood hazard changes ~~in flood risk~~ projected by ~~the~~
570 ~~GCMs. CaMa-Flood simulations with GCM runoff input,~~ indicating the possibility of obtaining a reasonable inundation area
distribution. Thus, combining accurate historical hazard maps with information on future flood frequency changes may be
optimal in general for generating future hazard maps. Please note that the historical flood hazard maps are not required to
apply reanalysis-based simulations using global flood model; the proposed method is also applicable to gauge-based or
machine-learning based historical hazard map.

575 In addition, we discussed which method is ~~most convenient~~ more reasonable for generating future-hazard maps in terms of
ease of use. ~~When using the GCM historical climate with bias correction based on the climatology of average monthly runoff,~~
~~the inundation areas were calculated separately for each GCM. For the Chao Phraya River, as described in Section 3, the~~
~~100-year RP inundation area under the historical climate varied widely, from 34,475 to 54,121 km², making it difficult~~ It is
reasonable to use ~~in practice. In contrast, the lookup method defines the historical climate a~~ hazard map ~~as having a value of~~
580 ~~one, making analysis simpler. Therefore, the lookup method is superior in terms of ease of comparison with~~ based on
reanalysis runoff data as a reference. Reanalysis runoff values are based on historical weather observations; therefore, a
hazard map created using reanalysis runoff data is expected to show good consistency with actual flood hazard distribution.
Regarding the uncertainties in future trends, as described in Section 3.2, the lookup method removed the systematic bias in
the distribution of annual maximum water levels within each model, and therefore is expected to have smaller uncertainties
585 than the runoff-correction method. The lookup method also has the advantage of facilitating efficient construction of future
climate hazard maps, as it allows for separate consideration of reanalysis hazard map improvement through upgrading of the
model and estimation of changes associated with climate change. Our results ~~imply~~ indicate that hazard maps could be made
more realistic by applying the proposed method to revise water slope reversal. Based on these findings, we suggest use of the
lookup method with reanalysis data as a reference.

590 In addition, this study examined the extent to which estimates of future flood risk changes differed depending on whether
bias correction was implemented and the method used for future-hazard mapping. Our assessment of inundation areas and
the future population affected by flooding showed that the variation in future flood high-risk areas estimates due to bias
correction and the method of model construction was up to 935%. Using the lookup method, the total population living in the

modeled inundation areas where the flood magnitude exceeded the 100-year RP under a future climate was estimated to be
595 around 1.886 billion. In addition, our risk assessment under a future climate showed underestimation of around 0.52 billion
for the affected population when the historical hazard map was used as an alternative to future-hazard maps and only the
change in frequency was considered. These results imply suggest that global flood risk studies require future-hazard maps,
i.e., inundation depth distributions at high resolution, for proper estimation of climate-change risk, and that discussing only
changes in the frequency of a given flood intensity is insufficient.

600 **Code availability**

The global hydrodynamic model CaMa-Flood (v4.01) is available from (<https://doi.org/10.5281/zenodo.4659583>)
(Yamazaki et al., 2021).

Data availability

The topography data MERIT are available from http://hydro.iis.u-tokyo.ac.jp/~yamada/MERIT_DEM/index.html (last
605 access: 17 October 2022) (Yamazaki et al., 2019). VIC-Bias-Corrected runoff are available from
<https://www.reachhydro.org/home/records/grfr> (Yang et al., 2021). The CMIP6 data are available from the Earth System
Grid Federation (ESGF) data platform (<https://esgf-node.llnl.gov/search/cmip6/>, accessed on 17 October 2022).

Author contribution

Yuki Kimura, Yukiko Hirabayashi and Dai Yamazaki conceived the study and contributed to the development and design of
610 the methodology. Yuki Kimura performed simulation and analysis. Xudong Zhou developed a code for extreme value
analysis. Yuki Kimura and Dai Yamazaki prepared the manuscript with re-view from Yukiko Hirabayashi, Xudong Zhou,
Yuki Kita.

Acknowledgements

This research was supported by LaRC-Flood Project co-funded by MS&AD and NEDO (JP21500379)
615

References

- Alfieri, L., Bisselink, B., Dottori, F., Naumann, G., de Roo, A., Salamon, P., Wyser K, and Feyen, L.: Global projections of river flood risk in a warmer world. *Earth's Future*, 5(2), 171-182. <https://doi.org/10.1002/2016EF000485>, 2017.
- 620 Aqueduct Floods Hazard Maps, <https://www.wri.org/aqueduct/data>, last access: 25 October 2022.
- [Bates, P. D., Savage, J., Wing, O., Quinn, N., Sampson, C., Neal, J., and Smith, A.: A climate-conditioned catastrophe risk model for UK flooding, EGU sphere \[preprint\], https://doi.org/10.5194/egusphere-2022-829, 2022.](https://doi.org/10.5194/egusphere-2022-829)
- Beck, H. E., De Roo, A., and van Dijk, A. I.: Global maps of streamflow characteristics based on observations from several thousand catchments. *Journal of Hydrometeorology*, 16.4, 1478-1501, <https://doi.org/10.1175/JHM-D-14-0155.1>, 2015.
- 625 Bernhofen, M. V., Whyman, C., Trigg, M. A., Sleigh, P. A., Smith, A. M., Sampson, C. C., Yamazaki, D., Ward, J. P. and Winsemius, H. C.: A first collective validation of global fluvial flood models for major floods in Nigeria and Mozambique. *Environmental Research Letters*, 13.10, 104007, <https://iopscience.iop.org/article/10.1088/1748-9326/aae014/meta>, 2018.
- Center for International Earth Science Information Network (CIESIN), Columbia University: Documentation for the Gridded Population of the World, Version 4 (GPWv4), Revision 11 Data Sets, NASA Socioeconomic Data and Applications Center
- 630 (SEDAC), Palisades, NY, <https://doi.org/10.7927/H45Q4T5F>, 2018.
- Dankers, R., and Feyen, L.: Climate change impact on flood hazard in Europe: An assessment based on high-resolution climate simulations. *Journal of Geophysical Research: Atmospheres*, 113.D19, <https://doi.org/10.1029/2007JD009719>, 2008.
- De Moel, H. D., J. Van Alphen, and J. C. J. H. Aerts.: Flood maps in Europe—methods, availability and use. *Natural hazards and earth system sciences* 9.2, 289-301, <https://doi.org/10.5194/nhess-9-289-2009>, 2009.
- 635 Dottori, F., Szewczyk, W., Ciscar, J. C., Zhao, F., Alfieri, L., Hirabayashi, Y., Bianchi, A., Mongelli, I., Frieler, K., Betts R, A. and Feyen., L.: Increased human and economic losses from river flooding with anthropogenic warming. *Nature Climate Change*, 8.9, 781-786, <https://doi.org/10.1038/s41558-018-0257-z>, 2018.
- Dottori, F., Alfieri, L., Bianchi, A., Skoien, J., and Salamon, P.: A new dataset of river flood hazard maps for Europe and the Mediterranean Basin, *Earth Syst. Sci. Data*, 14, 1549–1569, <https://doi.org/10.5194/essd-14-1549-2022>, 2022.
- 640 Eyring, V., Bony, S., Meehl, G. A., Senior, C. A., Stevens, B., Stouffer, R. J., and Taylor, K. E.: Overview of the Coupled Model Intercomparison Project Phase 6 (CMIP6) experimental design and organization. *Geoscientific Model Development*, 9.5, 1937-1958, <https://doi.org/10.5194/gmd-9-1937-2016>, 2016.
- Federal Emergency Management Agency (FEMA) Flood Maps and Zones Explained: <https://www.fema.gov/blog/fema-flood-maps-and-zones-explained>, 2018, last update 17 March 2021, last access: 16 October 2022.
- 645 Global Assessment Report 2015 (GAR 2015), Global Risk Data Platform, <https://preview.grid.unep.ch/>, last access 16 October 2022.
- Global Runoff Data Centre (GRDC): https://www.bafg.de/GRDC/EN/Home/homepage_node.html, last access: 11 October 2022.

- Hempel, S., Frieler, K., Warszawski, L., Schewe, J. and Piontek, F.: A trend- preserving bias correction – the ISI-MIP approach. *Earth System Dynamics*, 4.2, 219-236, <https://doi.org/10.5194/esd-4-219-2013>, 2013.
- 650 Hirabayashi, Y., Mahendran, R., Koirala, S., Konoshima, L., Yamazaki, D., Watanabe, S., Kim, H. and Kanae, S.: Global flood risk under climate change. *Nature climate change*, 3.9, 816-821, <https://doi.org/10.1038/NCLIMATE19>, 2013.
- Hirabayashi, Y., Tanoue, M., Sasaki, O., Zhou, X., and Yamazaki, D.: Global exposure to flooding from the new CMIP6 climate model projections. *Scientific reports*, 11.1, 1-7, <https://doi.org/10.1038/s41598-021-83279-w>, 2021.
- 655 Hirabayashi, Y., Yamada, K., Yamazaki, D., Ishikawa, Y., Arai, M., Inuzuka, T., Hisamatsu, R. and Ogawada, D.: Comparative Evaluation of Global Flood Hazard Maps and Recommendations for Corporate Practice. *Journal of Japan Society of Hydrology & Water Resources*. Vol. 35, No.3 175-191, <https://doi.org/10.3178/jjshwr.35.175>, 2022.
- Hosking, J. R. M.: L-Moments, in: *Wiley StatsRef: Statistics Reference Online*, John Wiley & Sons, Ltd., Hoboken, USA, 1–8, <https://doi.org/10.1002/9781118445112.stat00570.pub2>, 2015.
- 660 Huang, S., Krysanova, V., and Hattermann, F. F.: Does bias correction increase reliability of flood projections under climate change? A case study of large rivers in Germany. *International Journal of Climatology*, 34.14, 3780-3800, <https://doi.org/10.1002/joc.3945>, 2014.
- Japan Institute of Country-ology and Engineering 39th report: <https://www.jice.or.jp/tech/reports/detail/16/43>, 2021, last access on 16th October 2022.
- 665 Joint Research Centre (JRC) 2022: River Flood Hazard Maps at European and Global Scale, <https://data.jrc.ec.europa.eu/collection/id-0054>, last access 16 October 2022.
- Kita, Y. and Yamazaki, D.: Verification of the Usability of Global River Inundation Model Output for Hazard Maps in Japan. *Journal of Japan Society of Hydrology and Water Resources*. Vol. 35, No.4 267-278, <https://doi.org/10.3178/jjshwr.35.1743>, 2022.
- 670 LaFond, K. M., Griffis, V. W., & Spellman, P.: Forcing hydrologic models with GCM output: Bias correction vs. the "delta change" method. In *World Environmental and Water Resources Congress 2014*, 2146-2155, <https://ascelibrary.org/doi/10.1061/9780784413548.214>, 2014.
- Li, C., Zwiers, F., Zhang, X., Li, G., Sun, Y., and Wehner, M.: Changes in annual extremes of daily temperature and precipitation in CMIP6 models. *Journal of Climate*, 34.9, 3441-3460, <https://doi.org/10.1175/JCLI-D-19-1013.1>, 2021.
- 675 Liang, X., Lettenmaier, D. P., Wood, E. F., & Burges, S. J.: A simple hydrologically based model of land surface water and energy fluxes for general circulation models. *Journal of Geophysical Research: Atmospheres*, 99.D7, 14415-14428, <https://doi.org/10.1029/94JD00483>, 1994.
- Liang, X., Wood, E. F., and Lettenmaier, D. P.: Surface soil moisture parameterization of the VIC-2L model: Evaluation and modification. *Global and Planetary Change*, 13(1-4), 195-206, [https://doi.org/10.1016/0921-8181\(95\)00046-1](https://doi.org/10.1016/0921-8181(95)00046-1), 1996.
- 680 Lu, J., Carbone, G. J., and Crego, J.M.: Uncertainty and hotspots in 21st century projections of agricultural drought from CMIP5 models. *Scientific Reports*, 9.1, 4922, <https://doi.org/10.1038/s41598-019-41196-z>, 2019.

Panofsky HA, Brier GW. 1968. Some applications of statistics to meteorology: The Pennsylvania State University Press. 224pp.

685 Sampson, C. C., Smith, A. M., Bates, P. D., Neal, J. C., Alfieri, L., and Freer, J. E.: A high-resolution global flood hazard model. *Water resources research*, 51.9, 7358-7381, <https://doi.org/10.1002/2015WR016954>, 2015.

690 Seneviratne, S.I., Zhang, X., Adnan, M., Badi, W., Dereczynski, C., Di Luca, A., Ghosh, S., Iskandar, I., Kossin, J., Lewis, S., Otto, F., Pinto, I., Satoh, M., Vicente-Serrano, S.M., Wehner, M., and Zhou, B.: Weather and Climate Extreme Events in a Changing Climate. In *Climate Change 2021: The Physical Science Basis. Contribution of Working Group I to the Sixth Assessment Report of the Intergovernmental Panel on Climate Change* [MassonDelmotte, V., P. Zhai, A. Pirani, S.L. Connors, C. Péan, S. Berger, N. Caud, Y. Chen, L. Goldfarb, M.I. Gomis, M. Huang, K. Leitzell, E. Lonnoy, J.B.R. Matthews, T.K. Maycock, T. Waterfield, O. Yelekçi, R. Yu, and B. Zhou (eds.)]. Cambridge University Press, Cambridge, United Kingdom and New York, NY, USA, pp. 1513–1766, doi:10.1017/9781009157896.013, 2021.

Smith, A., Bates, P. D., Wing, O., Sampson, C., Quinn, N., and Neal, J.: New estimates of flood exposure in developing countries using high-resolution population data, *Nat. Commun.*, 10, 1–7, <https://doi.org/10.1038/s41467-019-09282-y>, 2019.

695 Taguchi, R., Tanoue, M., Yamazaki, D., and Hirabayashi, Y.: Global-Scale Assessment of Economic Losses Caused by Flood-Related Business Interruption. *Water*, 14.6, 967. <https://doi.org/10.3390/w14060967>, 2022.

700 Trigg, M. A., Birch, C. E., Neal, J. C., Bates, P. D., Smith, A., Sampson, C. C., Yamazaki, D., Hirabayashi, Y., Pappenberger, F., Dutra, E., Ward, P. J., Winsemius, H.C., Salamon, P., Dottori, F., Rudari, R., Kappes, M. S., Simpson, A.L., Hadzilacos, G and Fewtrell, T. J.: The credibility challenge for global fluvial flood risk analysis. *Environmental Research Letters*, 11.9, 094014. <https://doi.org/10.1088/1748-9326/11/9/094014>, 2016.

United Nations Office for Disaster Risk Reduction (UNISDR): Sendai Framework for Disaster Risk Reduction 2015– 2030, United Nations, www.unisdr.org/files/43291_sendaiframeworkfordrren.pdf, 2015.

705 Watanabe, S., Kanae, S., Seto, S., Yeh, P. J. F., Hirabayashi, Y., and Oki, T.: Intercomparison of bias-correction methods for monthly temperature and precipitation simulated by multiple climate models. *Journal of Geophysical Research: Atmospheres*, 117.D23, <https://doi.org/10.1029/2012JD018192>, 2012.

Watanabe, S.: Bias correction of climate model output values (1) Organizing feature-based methods. *Journal of Japan Society of Hydrology & Water Resources*. Vol. 33, No.6 243-262, <https://doi.org/10.3178/jjshwr.33.243>. 2020.

Ward, P. J., Winsemius, H. C., Kuzma, S., Bierkens, M. F. P., Bouwman, A., Moel, H. D. E., Luo, T.: Aqueduct floods methodology. World Resources Institute, 1– 28. www.wri.org/publication/aqueduct-floods-methodology, 2020a.

710 ~~Warszawski, L., Frieler, K., Huber, V., Piontek, F., Serdeczny, O., and Schewe, J.: The inter-sectoral impact model intercomparison project (ISI-MIP): project framework. *Proceedings of the National Academy of Sciences*, 111.9, 3228–3232, <https://doi.org/10.1073/pnas.1312330110>, 2014.~~

~~Willner, S. N., Otto, C., and Levermann, A.: Global economic response to river floods. *Nature Climate Change*, 8.7, 594–598, <https://www.nature.com/articles/s41558-018-0173-2>, 2018.~~

- 715 [Ward, P. J., Blauhut, V., Bloemendaal, N., Daniell, J. E., de Ruiter, M. C., Duncan, M. J., Emberson, R., Jenkins, S. F., Kirschbaum, D., Kunz, M., Mohr, S., Muis, S., Riddell, G. A., Schäfer, A., Stanley, T., Veldkamp, T. I. E., and Winsemius, H. C.: Review article: Natural hazard risk assessments at the global scale, *Nat. Hazards Earth Syst. Sci.*, 20, 1069–1096, <https://doi.org/10.5194/nhess-20-1069-2020>, 2020b.](#)
- [Wing, O. E., Lehman, W., Bates, P. D., Sampson, C. C., Quinn, N., Smith, A. M., Neal, J. C., Porter, J. R, and Kousky, C.: Inequitable patterns of US flood risk in the Anthropocene. *Nature Climate Change*, 12\(2\), 156-162, <https://doi.org/10.1038/s41558-021-01265-6>, 2022.](#)
- 720 Yamazaki, D., Kanae, S., Kim, H., & Oki, T.: A physically based description of floodplain inundation dynamics in a global river routing model. *Water Resources Research*, 47.4, <https://doi.org/10.1029/2010WR009726>, 2011.
- Yamazaki, D., de Almeida, G. A., and Bates, P. D.: Improving computational efficiency in global river models by implementing the local inertial flow equation and a vector-based river network map. *Water Resources Research*, 49.11, 7221-7235, <https://doi.org/10.1002/wrcr.20552>, 2013.
- 725 Yamazaki, D., Sato, T., Kanae, S., Hirabayashi, Y., and Bates, P. D.: Regional flood dynamics in a bifurcating mega delta simulated in a global river model. *Geophysical Research Letters*, 41.9, 3127-3135, <https://doi.org/10.1002/2014GL059744>, 2014.
- 730 Yamazaki, D., Ikeshima, D., Sosa, J., Bates, P. D., Allen, G. H., and Pavelsky, T. M.: MERIT Hydro: A high-resolution global hydrography map based on latest topography dataset. *Water Resources Research*, 55.6, 5053-5073, <https://doi.org/10.1029/2019WR024873>, 2019.
- Yamazaki, D., Revel, M., Hanazaki, R., Zhou, X., and Nitta, T.: global-hydrodynamics/CaMa-Flood_v4: CaMa-Flood (v4.01). Zenodo. <https://doi.org/10.5281/zenodo.4659583>, 2021.
- 735 Yang, Y., Pan, M., Lin, P., Beck, H. E., Zeng, Z., Yamazaki, D., David, C.H., Lu, H. Yang, K., Hong, Yang. And Wood, E, F.: Global Reach-Level 3-Hourly River Flood Reanalysis (1980–2019). *Bulletin of the American Meteorological Society*, 102.11, E2086-E2105, <https://doi.org/10.1175/BAMS-D-20-0057.1>, 2021.
- Zhou, X., Ma, W., Echizenya, W., and Yamazaki, D.: The uncertainty of flood frequency analyses in hydrodynamic model simulations. *Natural Hazards and Earth System Sciences*, 21(3), 1071-1085, <https://doi.org/10.5194/nhess-21-1071-2021>,
- 740 2021.

The English in this document has been checked by at least two professional editors, both native speakers of English. For a certificate, please see: <http://www.textcheck.com/certificate/nCVZAG>

[77qmXu](#)