

Evaluation—Effects of innovative a long-term soil and crop management on topsoil properties of a Mediterranean soil optimized management strategy for the improvement of cultivated soils in rainfed cereal cropland based on detailed water retention curves

5 Alaitz Aldaz-Lusarreta^{1,2}, Rafael Giménez^{1,2}, Miguel A. Campo-Bescós^{1,2}, Luis M. Arregui^{1,4}, Iñigo Virto^{1,3}

¹Institute for Innovation & Sustainable Development in Food Chain (IS-FOOD), Universidad Pública de Navarra (UPNA), Campus de Arrosadia, 31006 Pamplona, Spain.

10 ²Department of Engineering, Ed. Los Olivos, Universidad Pública de Navarra (UPNA), Campus de Arrosadia, 31006 Pamplona, Spain.

³Department of Science, Ed. Los Olivos, Universidad Pública de Navarra (UPNA), Campus de Arrosadia, 31006 Pamplona, Spain.

⁴Department of Agricultural Engineering, Biotechnology and Food, Ed. Los Olivos, Universidad Pública de Navarra (UPNA), Campus de Arrosadia, 31006 Pamplona, Spain.

15 *Correspondence to:* Alaitz Aldaz-Lusarreta (alaitz.aldaz@unavarra.es)

Abstract. The effectiveness of conservation agriculture (CA), and other soil management strategies implying a reduction of tillage has been shown to be site-dependent (crop, climate and soil), and then any new soil and crop management should be rigorously evaluated before its implementation. Moreover, farmers are normally reluctant to abandon conventional practices if this means putting their production at risk. This study evaluates an innovative soil and crop management optimized cropping system (including no-tillage, cover crops and organic amendments), as an alternative to conventional management for rainfed cereal cropping in a calcareous soil in a semi-arid Mediterranean climate zone in Navarre (Spain), based on the analysis of soil water retention curves (SWRC) and soil structure. The study was carried out in a small agricultural area in the municipality of Garinoain (Navarre, Spain) devoted to rainfed cereal cropping. No other agricultural area in the whole region of Navarre exists where soil and crop management as proposed herein is practiced. Climate is temperate Mediterranean and the dominant soil is Fluventic Haploxerep. Within the study area there is a subarea devoted to the proposed soil and crop management (OPM treatment), while there is another subarea where the soil and crop management is the conventional in the zone (CM treatment). In an agricultural area, plots were randomly selected on a soil unit (Fluventic Haploxerep), with contrasting managements: (a) optimized system, which OPM includes no-tillage (18 years continuous) after conventional tillage, crop rotation, use of cover crops and occasional application of organic amendments.; CM -and (b) conventional management, which involves continuous conventional tillage (chisel plow), mineral fertilization, no cover crops and a lower diversity of crops in the rotation. Undisturbed soil samples from the topsoil soil surface (0–5 cm) and disturbed samples from the tilled layer (0–30 cm) were collected for both systems. The undisturbed samples were used to obtain the detailed SWRCs in low the suction range 0–1 kPa to 110 kPa using a Hyprop® device. From these SWRCs, different approaches found in the literature to evaluate soil physical

20

25

30

quality were calculated. The pore-size distribution was also estimated from the SWRCs ~~the Dexter-S index was determined.~~

35 Disturbed samples were used in the laboratory to assess soil structure by means of an aggregate-size fractionation, ~~and to~~
~~perform complementary analysis from which other indicators related to soil functioning and agricultural sustainability were~~
~~obtained. The approaches evaluated did not show clear differences between treatments. However, the differences in soil quality~~
~~between the two forms of management were better observed in the pore size-distributions, and by the analysis of the size-~~
~~distribution and stability of soil aggregates. There was an overabundance of macropores under CM, while the amount of~~
40 ~~mesopores (available water) and micropores were similar in both treatments. SWRCs showed significant differences between~~
~~the two studied agricultural systems, corresponding to different pore size distributions. However, the S index did not show~~
~~significant differences between the two cropping systems. In addition, the soil under conventional management showed greater~~
~~macroporosity (gravitational water). As a result, the soil under the optimized system stored up to 10 % more water for the crop~~
~~at the studied depth. Likewise, more stable macroaggregates were observed in the optimized system OPM than in the~~
45 ~~conventional one CM, as well as more organic C storage, greater microbial activity, and biomass. Overall, these results reflect~~
~~a better quality or less degradation of the soil after 18 years under the optimized system than its conventionally managed~~
~~counterpart. The proposed management system is providing good results regarding soil physical quality and contributing also~~
~~to the enhancement of biodiversity, and to the improvement in water use efficiency. Finally, our findings suggest that the~~
~~adoption of the proposed practice would not result in a loss in yields compared to conventional management.~~

Con formato: Color de fuente: Texto 1

50 1 Introduction

Conservation agriculture (CA), and other soil management strategies implying a reduction of tillage have been reported to
reduce soil degradation –preserving soil structure and associated porosity– in different agroecological situations (Verhulst et
al., 2010; Sartori et al., 2022), and in many cases are indeed designed for this purpose (Virto et al., 2015).

The reasons reported for its adoption in Europe are several. In Northern Europe soil erosion control, soil crusting in loamy
55 soils and the need to increase soil organic C storage, as well as soil trafficability are widely cited as reasons for CA
implementation (Lahmar et al., 2007). In the Mediterranean countries, soil water storage and water-use efficiency can be added
to this list of reasons (De Turdonnet et al., 2007). The most widely reported benefits of CA in Southwestern Europe in relation
to erosion are the increased soil infiltrability and/or the protective effect of crop residues on the soil surface (Gómez et al.,
2009; Espejo-Pérez et al., 2013; Virto et al., 2015). In Spain, the soil water-retention capacity has been observed to be greater
60 in semi-arid land under no-tillage (Fernández-Ugalde et al., 2009; Bescansa et al., 2006). Other positive effects of CA on soil
quality observed in semi-arid rainfed agricultural systems in Spain are related to soil organic C and nutrients storage (Ordóñez
Fernández et al., 2007).

However, different studies show that the effectiveness of CA in solving these problems can be site-dependent (Costantini et
al., 2020; Chenu et al., 2019), and variable depending on its effect on crop yields (Virto et al., 2012).

65 Indeed, since crop performance under no-till is strongly dependent on the crop type and climate (Or et al., 2021) and also soil type, no-till may not be suitable for all conditions (Pittelkow et al., 2015). In fact, in some areas, no-till often results in reduction in crop yields of ca. 10% (Or et al., 2021). Conventional tillage –in carefully managed agricultural soils– may be imposed when no-tillage would lead to chronic and unacceptable yield losses.

Con formato: Normal, Espacio Después: 12 pto

70 Soil degradation due to tillage and farming practices with little or no return of crop residues to the soil can manifest in different ways. Examples of these manifestations include decreased water infiltration and storage, compaction and poor aeration (Batey, 2009; Hu et al., 2021; Rabot et al., 2018). These symptoms are usually associated with a common cause: the deterioration of the natural structure of soils, which leads to changes in porosity and hydraulic properties (Kodesova et al., 2011; Pires et al., 2017). Therefore the structure of the soil, and many of its associated properties appear as diagnostic indicators in most agro-ecosystems (Rabot et al., 2018).

Con formato: Color de fuente: Texto 1, Inglés (Estados Unidos)

75 Conservation practices, which reduce or eliminate tillage (e.g., direct seeding, optimal maintenance of vegetation cover on the soil), are capable of preserving the structure of the soil and, consequently, its associated porosity (Bescansa et al., 2006; Islam and Reeder, 2014; Triplett and Dick, 2008).

80 In this sense, surface soil—as the interface with the atmosphere and inlet of rainwater—is the most critical zone in semiarid rainfed areas, where the optimization of the annual soil water balance is of the uttermost relevance for ensuring sustained and profitable crop yields.

From the perspective of the effects of CA on the soil, Among the existing approaches to assess soil condition (Minasny and McBratney, 2018), Rabot et al. (2018) highlighted the interest of soil structure as an indicator of its performance, as well as the relevance of considering the organization, distribution, and stability of aggregates and the characterization of the associated pore system network.

85 There are different types of techniques to characterize the soil pore system (Pires et al., 2013; Taina et al., 2013; Pagliai et al., 2004). The analysis of soil water retention curves (SWRCs) –the relationship between soil water matric potential and soil water content– is one of the most employed methods for characterizing soil pores. It enables an adequate characterization of the effective porous system (interconnected, functional pores), and therefore, SWRCs are a valuable tool to diagnose the physical condition of soils (Dexter, 2004a, b; Pires et al., 2017). In addition, is a relatively fast and low-cost methodology.

90 SWRCs are functions that relate the water content in the soil and the degree of retention/suction of moisture by the soil matrix. The degree of retention at low suctions is mainly associated with the porous system (size of pores) of the soil, and therefore SWRCs are a valuable tool to diagnose the physical condition of soils (Dexter, 2004a, b; Pires et al., 2017).

Starting from a completely saturated soil, the suction value for which desaturation begins is defined as the air entry value. From this point, the water content in the soil decreases as suction increases, and an inflection is observed on the curve. The SWRC of most soils presents a J form, defined by the presence of the so-called air entry region, in which the volumetric water content is maintained at saturation values even in suctions slightly over zero. This occurs due to occluded pores (not functional) (Kosugi et al., 2002). When there is no marked air entry region, the SWRC adopts an S form. As such, in the case of fine-textured undisturbed soils, the SWRC usually presents the shape of an S (Kosugi et al., 2002). Following Brooks and Corey (1964), in J-shaped SWRC the best fit occurs with an exponential function. Nevertheless, for S-shaped SWRC, the fit with exponential functions is poor (Milly, 1987; van Genuchten and Nielsen, 1985), and it is recommended to employ sigmoidal-type functions such as the van Genuchten Equation (1980).

Dexter (2004a) proposed an S index to estimate the physical condition of soils (changes in soil structure, and therefore in porosity) based on the soil SWRC. This S index refers to the value of the slope at the inflection point of the SWRC (Dexter, 2004a, b). According to Dexter (2004a), this inflection point defines the limit between structural pores (in the range of low suction) and textural pores (in the range of high suction values).

The inflection point can be determined directly from the SWRC, and its precision depends on the number of measuring points (water content vs. suction) (Dexter, 2004a). Alternatively, experimental data could be disregarded, and the renowned van Genuchten equation (1980) can be assumed as a satisfactory adjustment function for data. The parameters of the equation can be then determined by pedotransfer functions, available in the scientific literature (Dexter, 2004a).

One relevant issue in the assessment of the effects of soil management on soils is the increasing need to co-learn with farmers and other stakeholders (Bouma, 2014), and to identify the consequences of changes in land use in actual field conditions. Likewise, this assessment needs to account for as much soil functions as possible (Bünemann et al., 2018), as recently suggested from the perspective of linking soils with sustainable development goals (SDG, (Lal et al., 2021; Bouma et al., 2021)).

In this framework, the objective of this study was to assess the continuous application, throughout 18 years, of an optimized management system innovative soil and crop management –in comparison with conventional management– for the improvement of the soil physical condition, and the optimization of the soil water balance, in rainfed cereal agrosystems in semi-arid land (Navarre, Spain). The comparison with conventional management was carried out for a cultivated soil characteristic of a semiarid rainfed cereal cropping area. To this end, the S index (Dexter, 2004a) was assessed, in comparison with the study of topsoil SWRCs and soil structure, as related to the size distribution of stable macro- and microaggregates and their relation to organic C storage. It has to be emphasized that there is –to our knowledge– no other agricultural area in the whole region of Navarre where soil and crop management as proposed herein is practiced –and even less for almost two decades– with the exception of precisely our test area.

Con formato: Color de fuente: Texto 1, Inglés (Estados Unidos)

125 This study evaluates the long-term effects (throughout almost two decades) of optimized management on the study area, which was previously conventionally managed. SWRC are analyzed for unaltered soil samples obtained with a specific equipment for soil water retention assessment in undisturbed soil samples. The results are compared with the same soil in conventional tillage conditions.

In addition, a study is developed on the size distribution of water-stable aggregates, and the organic carbon stored therein, aiming to provide more information on the consequences of management on soil structure, and its relation to SWRCs.

130 Base on the analysis of detailed SWRCs and soil structure, (i.e., the size-distribution of stable macro- and microaggregates), and its consequences in soil water retention, the evaluation includes other complementary aspects relevant to soil functioning and SDGs by assessing soil organic C storage (climate regulation, SDG #13), the soil biological diversity (biodiversity loss, SDG #15) and (as far as available from farmers) yields (food security, SDG #2). This evaluation aims to incorporate therefore real-case field-measured indicators, in line with the recent recommendations of the new European Agricultural Policy (Bouma et al., 2022; Panagos et al., 2022).

Con formato: Espacio Después: 12 pto

Con formato: Color de fuente: Texto 1

2. Material and methods

2.1. Study zone and treatments

Agricultural fields under two contrasting agricultural management strategies on identical soil types (*Fluventic Haploxerepts* (Soil Survey Staff, 2014)), with loam texture at the upper soil horizon and use (rainfed cereal cropping) were randomly selected. The study was carried out in a small agricultural area in the municipality of Garinoain (Navarre) (42,59843° N, 1,64959° O). This is an area with a dry temperate Mediterranean climate, according to Papadakis (1967). The mean annual precipitation is 550 mm year⁻¹, and the Thornthwaite mean annual evapotranspiration is 711 mm year⁻¹ (Gobierno de Navarra Meteorología y Climatología de Navarra, 2022). The soil –*Fluventic Haploxerepts* (Soil Survey Staff, 2014), *Fluvic Cambisol*, (WRB, 2015)– is devoted to rainfed cereal cropping. The physical-chemical analysis of the soil (Table 1) showed high homogeneity of the material at the study depth (0-30 cm) regarding the most relevant physical-chemical properties related to moisture retention, except for the content of organic C (which can be related to the change in management). In addition, *in situ* standard soil description corroborated the homogeneity of the topsoil (0-30 cm).

Con formato: Espacio Después: 12 pto

The physical-chemical analysis of soils shown in (Table 1) was done using standard methods. In particular, soil pH was analyzed in a 1:2.5 soil:water solution as in Hendershot and Lalonde (1993), organic C content by wet combustion as in Tiessen and Moir, (1993), carbonates were determined in a modified Bernard’s calcimeter following Pansu and Gautheyrou (2003a), and the electrical conductivity in a soil:water solution similar to that for pH analysis (Pansu and Gautheyrou, 2003b). The soil texture was determined by the pipette method. All analyses were conducted on air-dried samples ground to 2 mm, collected at 0-30 cm, as proposed, for example, by FAO for organic C storage (FAO, 2020). Finally, the bulk density was determined using

the Hyprop® device (see below) from undisturbed samples extracted from the first 5 cm of the soil profile. Based on field standard soil description, these values would extrapolate up to 30 cm depth,—along with the visual inspection carried out in situ—showed high homogeneity of the soil at the study depths regarding the most relevant physical-chemical properties related to moisture retention, except for the content of organic C (which can be related to the change in management).

Table 1. Physical-chemical properties of the topsoil (0-30 cm) in OPM and CM treatments and the textural characterization of both treatments. Mean ± standard deviation of the mean (n=3). Statistically significant differences (p < 0.05) are in bold,

<u>Treatment</u>	<u>Optimized (OPM)</u>	<u>Conventional (CM)</u>
Bulk density (0-5 cm) (g·cm ⁻³)	1.26 ± 0.05	1.26 ± 0.15
pH	8.00 ± 0.05	8.01 ± 0.01
Organic C (%)	1.80 ± 0.10	1.51 ± 0.14
CE (µS·cm ⁻¹)	483 ± 5.66	795 ± 4.24
Carbonates (%)	31.6 ± 0.19	32.5 ± 0.14
Sand (Coarse) (%)	5.05 ± 0.08	5.79 ± 0.33
Sand (Fine) (%)	30.9 ± 1.00	31.7 ± 1.25
Silt (%)	47.2 ± 1.23	43.7 ± 0.93
Clay (%)	16.9 ± 0.46	18.5 ± 0.46
Texture class (USDA)	<i>Loam</i>	<i>Loam</i>

Within the study area there is a subarea —to our knowledge, unique in Navarre— devoted to a pioneer optimized soil and crop management (from now on OPM treatment). There is another subarea —adjacent to OPM one— where the soil and crop management is the conventional in the zone (from now on CM treatment).

Con formato: Espacio Después: 12 pto

Con formato: Color de fuente: Azul, Inglés (Estados Unidos)

Con formato: Color de fuente: Azul

Con formato: Espacio Antes: 12 pto

165 ~~The contrasting managements strategies were: a) OPM is an optimized system, used for 18 consecutive years, which includes~~
direct seeding, an improved crop rotation including wheat (*Triticum aestivum* L.), barley (*Hordeum vulgare* L.), legumes
(*Pisum sativum* L., *Vicia faba* L. and others) and rapeseed (*Brassica napus* L.), and the occasional use of cover crops and
organic amendments. ~~(from now on referred to as 'optimized management' or OPM). In OPM, b) Both grain and straw were~~
also removed in the 11 first years of implementation, and only stubble remained on the surface of soil when direct seeding was
170 implemented with minimal soil perturbation. Since then, and for the 7 remaining years, the procedure was slightly modified,
and only grain was removed at harvest. Therefore chopped straw and stubble remained on the surface of the soil before direct
seeding with no disruption of the soil surface. At the same time, cover crops were introduced in the system, despite this being
a risky practice in rainfed Mediterranean agrosystem characterized by warm and dry summers. As such, summer cover was
routinely granted in this system by letting spontaneous vegetation grow in the summer, after harvest. This vegetation was dried
175 with herbicides before seeding the cash crops in the fall. Also, only one year the winter crop used was *Vicia villosa* Roth, and
served as a cover crop for sorghum (*Sorghum vulgare* L.), which was successfully grown in the spring-fall season despite the
limiting water availability in the area.

Con formato: Fuente: Sin Cursiva

~~and b) CM is a conventional management, which employed conventional continuous (annual) tillage with a chisel plough~~
down to 15 cm, mineral fertilization, without cover crops, and a less diverse crop rotation including mostly wheat and
occasionally legumes and rapeseed ~~(referred to as CM). In CM, c) Crop residues were~~ are not returned into the soil (both grain
180 and straw were removed annually): only the non exported stubble and roots were therefore incorporated into the soil at 10-15
cm depth by vertical tillage.

Con formato: Color de fuente: Texto 1

Con formato: Fuente: Sin Cursiva

~~In CM, crop residues were not returned into the soil (both grain and straw were removed annually): only the non exported~~
~~stubble and roots were therefore incorporated into the soil at 10-15 cm depth by vertical tillage.~~

185 ~~To avoid the possible influence of the preceding crop, the two last crops of the rotation before sampling were the same (winter~~
~~wheat (*Triticum aestivum* L.) and rapeseed (*Brassica napus* L.) in both systems.~~

In both treatments (OPM and CM), d) mineral fertilization consisted of phosphorus addition before seeding (120-150 kg·ha⁻¹
of triple superphosphate 0-46-0) and nitrogen supply of (180 kg N·ha⁻¹; (split and distributed in two coverers dressings at: 60
190 kg N·ha⁻¹ and 120 kg N·ha⁻¹ in January and March, respectively) as urea, was identical in both management practices. Organic
fertilization was not used in any of the study treatments until the experiment year 2021, in which an organic amendment was
applied to the soil without disturbing the surface in the OPM treatment. After harvest, pig slurry was applied with an average
concentration of 2.5 kg N·m⁻³, by means of a tanker equipped with a system of hanging pipes that deposit the product a few
centimeters above the ground and at a time close to a forecasted rainfall event. The application rate was 60 m³·ha⁻¹ of slurry.
These rates are within the legal limits established by legislation for groundwater protection against pollution caused by nitrates

195 from agricultural sources (EU Directive 91/676 (Council of the European Union, 2008)), as the area is within a vulnerable watershed according to this Directive.

To avoid the possible influence of the preceding crop, it was checked that the two last crops of the rotation before the study both in OPM and CM sampling were the same (winter wheat (*Triticum aestivum* L.) and rapeseed (*Brassica napus* L.)), in both systems.

200 **Table 1. Physical-chemical properties of the topsoil (0-30 cm) in OPM and CM treatments. Mean \pm standard deviation of the mean (n=3).**

Treatment	Optimized (OPM)	Conventional (CM)
Bulk density ($\text{g}\cdot\text{cm}^{-3}$)	1.26 ± 0.05	1.26 ± 0.15
pH	8.00 ± 0.05	8.01 ± 0.01
Organic C (%)	1.8 ± 0.10	1.5 ± 0.14
CE ($\mu\text{S}\cdot\text{cm}^{-1}$)	483.00 ± 5.66	795.00 ± 4.24
Carbonates (%)	31.64 ± 0.09	32.51 ± 0.14

2.2 Soil sampling and methodological approach

205 Soil sampling for both treatments (OPM and CM) was carried out in early ~~F~~all (after harvest and before soil preparation for seeding in CM), approximately four months after the last tillage for CM, at three (n=3) randomly selected ~~sampling sites fields~~ per treatment. Undisturbed cylindrical (8 cm diameter, 5 cm height) samples were collected from the first 5 cm of each sampling site.

210 Simultaneously, a second sampling procedure was carried out at 0-30 cm depth, in which disturbed samples were collected. The same three sampling locations were used for collecting three sub-samples per sampling point, which were then mixed to obtain a composite sample. In addition, in the same points, 3 disturbed composite samples –comprising 3 subsamples each– were taken at 0-30 cm depth for further physical-chemical and biological analysis in the lab. Immediately after sampling, part of the composite soil was stored at 5 °C for biological analysis, while the remainder was used to assess soil aggregation, as detailed below.

215 *Determination of SWRCs.* From the ~~unaltered- undisturbed~~ cylindrical samples, SWRC tracks were obtained in the laboratory
with a Hyprop[®] device commercialized by METER (München, Germany) as described by Schindler et al. (2010). This
device uses the Peters and Durner (2008) and Schindler (1980) simplified evaporation method. The procedure is based on the
continuous measuring of ~~hydric matric component of soil water~~ potential from two micro-tensiometers inserted into the
saturated soil sample, while the moisture content of the sample is progressively reduced by evaporation. As the experiment
220 advances, the sample loses water by evaporation, and the tensiometers record the variation of suction as a scale measures the
weight change. The registries of suction and weight are automated and continuous. ~~In this way, it is possible to obtain the
relationship between the gravimetric and volumetric water content from measurements of weight and bulk density of the
sample and its water content~~ Gravimetric water content can be expressed as volumetric content since bulk density is known
(Schindler et al., 2010).

225 ~~To this end, a~~ After the evaporation experiment concluded, the samples were dried in an oven at 105 °C for 24 h to determine
the dry weight and the soil bulk density, for the subsequent evaluation of the results using the Hyprop-Fit (version: 4.2.2.0)
software (Pertassek et al., 2015). ~~The final dataset comprises around 100 evenly distributed suction-water content
measurements between 0 kPa and 150 kPa. Finally, an extra measurement at 1500 kPa was determined using a pressure plate
(Dirksen, 1999).~~

230 **2.3 Determination of the S index Analysis of the SWRCs and derived indices and functions**

~~First, it should be noted that different mathematical functions to adjust SWRCs are found in the literature depending on the
general shape of the SWRC. The SWRC of most soils presents a J form, defined by the presence of the so-called air-entry
region, in which the volumetric water content is maintained at saturation values even in suctions slightly over zero. This
occurs due to occluded pores (not functional) (Kosugi et al., 2002). Instead, When there is no marked air-entry region, the
SWRC adopts an S form. For instance, As such, in the case of fine-textured undisturbed soils, the SWRC usually presents the
shape of an S (Kosugi et al., 2002). Following Brooks and Corey (1964), in J-shaped SWRC the best fit occurs with an
exponential function. But, for S-shaped SWRC, the fit with exponential functions is poor (Milly, 1987; van Genuchten and
Nielsen, 1985), and it is recommended to employ sigmoidal-type functions such as the van Genuchten Equation (1980).~~

240 ~~Following Brooks and Corey (1964), in J-shaped SWRC the best fit occurs with an exponential function. Nevertheless, for S-
shaped SWRC, the fit with exponential functions is poor (Milly, 1987; van Genuchten and Nielsen, 1985), and it is
recommended to employ sigmoidal-type functions such as the van Genuchten Equation (1980).~~

Predicting soil water retention by uni-modal approaches. The *S index*. Dexter (2004a) proposed an *S index* to estimate the
physical condition of soils (changes in soil structure, and therefore in porosity) based on the soil SWRC was determined as
described by Dexter (2004a). This index represents the value of the slope of the SWRC at the inflection point when the curve
245 is expressed as the natural logarithm of suction (in hPa) versus the gravimetric moisture content, θ_g (kg·kg⁻¹) (Dexter, 2004a,

Con formato: Espacio Después: 12 pto

Con formato: Fuente: Cursiva

b). According to Dexter (2004a), this inflection point defines the limit between structural pores (in the range of low suction) and textural pores (in the range of high suction values). It is assumed that, as S increases, structural pores are more abundant and, therefore, there are better conditions for water flow and storage in the soil (Dexter, 2004a).

The inflection point can be determined directly by hand from the SWRC; if there are enough accurate and its precision depends on the number of measuring points (water content vs. suction) (Dexter, 2004a). Alternatively, it would be more appropriate to fit the SWRC to a mathematical function and then to calculate the slope at the inflection point in terms of the parameters of the function. To do this, one of the best-known functions is that proposed by experimental data could be disregarded, and the renowned van Genuchten equation (1980) for which, in turn, can be assumed as a satisfactory adjustment function for data. The parameters of the equation can be then determined by pedo-transfer functions; are available for estimation of its parameters in the scientific literature (Dexter, 2004a).

The value of S was calculated in two different ways assuming a uni-modal pore size distribution: i) from a sigmoidal function fitted to experimental data (Eq. 1) and ii) from the adjusted parameters of the van Genuchten (1980) function (Dexter, 2004a) (Eq.2). To this end, the whole dataset was used, i.e., 0-150 kPa and 1500 kPa:

$$y = \frac{a}{1 + e^{-\left(\frac{x-x_0}{b}\right)}} \quad (1)$$

Where y is the logarithm of suction (hPa), x is the gravimetric moisture (kg·kg⁻¹), and a, b, x₀ are parameters of the equation.

$$\theta_h = (\theta_{sat} - \theta_{res})[1 + (\alpha h)^n]^{-m} + \theta_{res} \quad (2)$$

Where h is the soil matric potential (hPa), θ_h (m³·m⁻³) is the measured soil water content at matric potential h, θ_{res} is the residual water content (m³·m⁻³), θ_{sat} is the saturated water content (m³·m⁻³), α (hPa⁻¹), n (-) and m = 1 - (1/n) (-) are the van Genuchten parameters.

Predicting soil water retention by a bi-modal approach. Likewise, the water retention data was fitted to the double-exponential equation with 5 adjustable terms proposed by Dexter et al. (2008), in which all the parameters have a different physical meaning (Eq.3). To this end, the dataset between 0-150 kPa was used.

According to Jensen et al. (2019), this model can reflect better the effects of management systems in the soil properties.

$$\theta = C + A_1 e^{\left(-\frac{h}{h_1}\right)} + A_2 e^{\left(-\frac{h}{h_2}\right)} \quad (3)$$

Con formato: Espacio Después: 12 pto

270 Where θ is the gravimetric water content; C is the residual water content (asymptote of the equation); the amount of matrix and structural pore space are proportional to A_1 and A_2 , respectively. The values of h_1 and h_2 are the characteristic pore water suctions at which the matrix and structural pore spaces empty, respectively (Dexter et al., 2008).

Numerical integration of SWRCs. Water retention energy index. The water retention energy index (WRa) (Armino and Wendroth, 2016) (Eq. 4) obtained from numerical integration including of each SWRC was determined.

275
$$WR_a = \int_{\theta_{pwp}}^{\theta_{fc}} h(\theta) d\theta \quad (4)$$

Where θ_{fc} and θ_{pwp} is the volumetric water content at field capacity and permanent wilting point, respectively; h is suction (kPa).

280 WRa quantifies the total absolute energy that has to be applied by the soil to hold water in its pores between field capacity (θ_{fc}) –i.e., after the water drainage process becomes negligible– and wilting point (θ_{pwp}) or any moisture point θ_i , where $\theta_{pwp} \leq \theta_i \leq \theta_{fc}$. The WRa index was determined for the suction range between field capacity (ca. 10 kPa, see below) and a moisture content corresponding to ca.150 kPa (maximum operating value of the Hyprop© device) which means a dataset of around 100 measured points (see above). It is clear that the accuracy of this index is highly conditioned by the degree of detail of the SWRCs.

285 This index presents an adequate sensitivity for smaller-scale, high-precision applications and for capturing the dynamic evolution of the soil physical state (Armino and Wendroth, 2016). More precisely, in the case of two SWRCs measured before and after some natural or anthropogenic changes (e.g., tillage), these energy indices can be used to quantify the change in soil physical quality status (Armino and Wendroth, 2016).

290 *Estimation of field capacity.* The Hyprop© device, besides determining SWRC, provides values for soil unsaturated hydraulic conductivity ($SUHC$) at different water contents. From these $SUHC$, it is possible to estimate the moisture content of the soil at field capacity –i.e., once gravitational water is drained– which corresponds to the inflection point of the SWRC. (Fontanet, 2014).

Estimation of pores size-distribution. Finally, the soil pores size-distribution was estimated from the equivalent radius obtained from the suction values of SWRCs, by Jurin's law (1718) using the equation formulated by Young and Laplace (Warrick, 2003) (Eq. 5):-

295
$$h = \frac{2 T \cos \theta}{\rho g r} \quad (2)$$

where h is the height of the liquid (m), T is the surface tension ($\text{N}\cdot\text{m}^{-1}$), θ is the contact angle of the liquid, ρ is the density of the liquid ($\text{kg}\cdot\text{m}^{-3}$), g is the gravitational acceleration ($\text{m}\cdot\text{s}^{-2}$), and r is the equivalent radius of the pores (m) retaining water at a potential suction equivalent to h (m).

2.4 Indicators of soil structure

300 *Aggregates size-fractionation.* Firstly, field-moist soil samples were gently passed through a 5 mm sieve, without forcing the aggregates, and left to dry naturally. Then 50 g were collected from each soil sample and subjected to humidification with deionized water vapor at room temperature, until saturation.

Water-stable aggregates fractionation followed the step-wise protocol described by Oliveira et al. (2019) (Fig. 1), as follows.

305 Firstly, each moist soil sample was sequentially sieved (250 μm and 50 μm) to obtain three aggregate fraction sizes (Elliott, 1986) macroaggregates (Magg, > 250 μm), microaggregates (magg, 50-250 μm) and the silt and clay fraction ((s+c), < 50 μm) (Fig. 1). To this end, initially, 50 g of saturated soil sample were spread over a 250 μm sieve. The soil was then submerged in deionized water for approximately 30 seconds, and then manually sieved by moving the sieve upwards and downwards 15 times in a distance of 1.5 cm during 30 seconds. The sieved material was then placed on a 50 μm sieve, submerged again for 30 seconds in deionized water, and the manual sifting was repeated. The sieved material was then transferred to a 500 mL
310 centrifuge bottle, and centrifuged at x 13000 g for 10 minutes to recover the silt and clay fraction. The aggregates retained by the sieves (> 250 μm and 50-250 μm) were gathered and dried in an oven at 50 $^{\circ}\text{C}$ along with the fraction < 50 μm , and stored at ambient temperature for subsequent analysis.

The second step consisted in the fractionation of the > 250 μm fraction (Magg, Fig. 1) in other three new fractions: coarse particulate organic matter > 250 μm (cPOM + sand), micro-aggregates within macroaggregates (mMagg, 50-250 μm) and
315 particles < 50 μm within macroaggregates (M(s+c)) (Fig.1). To this end, an ad hoc device adapted from Six et al. (2002), which consists of a block formed by a 250 μm sieve located above a 50 μm sieve, was employed. This block was placed on an agitator. Ten g of Magg (> 250 μm) and 50 glass beads (4 mm in diameter) were poured on the 250 μm sieve. The block was horizontally agitated for approximately 2 minutes at 125 rpm while deionized water was poured until Magg disaggregated completely. The material retained in the 250 μm and 50 μm sieves corresponded to the fractions of > 250 μm (cPOM + sand), and mMagg (50-
320 250 μm), respectively. Similar to the first step, the M(s+c) fraction was recovered by centrifugation. The three fractions were dried at 50 $^{\circ}\text{C}$ and stored at ambient temperature.

Figure 1. Scheme of the experimental protocol carried out for water-stable aggregates size-fractionation, as adapted from Oliveira et al. (2019).

Con formato: Color de fuente: Rojo

Con formato: Fuente: Negrita

2.5 Other soil indicators

As a complement of the detailed study of water retention, soil porosity and structure, other indicators related to soil functioning and agricultural sustainability were analysed.

First, the distribution of organic C among aggregate fractions was determined by analysing the organic C concentration in every fraction by wet oxidation following (Tiessen and Moir, 1993).

Second, microbial biomass C (MBC) was measured by fumigation-extraction as described by (Vance et al., 1987), and the functional diversity of the soil microbial populations was carried out following (Preston-Mafham et al., 2002) from fresh samples, and by a study of the utilization patterns of different C sources with Ecoplates™ (Biolog, Hayward, CA, USA). The average well color development (AWCD) and the number of substrates used by the microbial community within the soil (NSU) were determined from the Ecoplates™, as quantitative indicators of the soil functional diversity based on community-level physiological profiles (Zak et al., 1994).

2.5.6 Statistical analysis

Three (n=3) replicates of each study treatment (OPM and CM) were used in the statistical analysis. A one-factor analysis of variance (ANOVA) with significance level $p < 0.05$ was performed for the different indicators to examine the significant influence of OPM. All statistical treatments were performed using IBM SPSS Statistics 27.0 (SPSS Inc., 2021).

3. Results and discussion

3.1 Analysis of the SWRCs

A clear difference between the SWRCs of the two treatments assessed was observed: the variability between treatments was remarkably superior to the one existing between the replicates of the same treatment (Fig. 2).

Figure 2. Soil water retention curves for each replicate (n= 3) for the two treatments (optimized management (OPM) vs. Conventional management (CM)).

The saturation water content in both treatments was similar ($p > 0.05$), which indicates that there was no significant compaction (and therefore, reduction of the total porous space) because of management for the studied depth. This is consistent with the observation of soil in both treatments presenting the same bulk density (Table 1). In both treatments, a relevant presence of occluded or nonfunctional pores was not observed (the air-entry region was negligible, Fig. 2).

In relation to the shape of the SWRCs, both corresponded to the S type (Kosugi et al., 2002); a relevant presence of occluded or non-functional pores was not observed (the air-entry region was negligible, Fig. 2).

Con formato: Fuente: Negrita

Nonetheless, the specific water capacity (change in the moisture content per unit of suction; $d\theta/d\Psi$, as defined by Hillel (1998) (Klute, 1952) in the suction range between saturation (0 kPa) and near field capacity (10.5 \pm 0.56 kPa) was significantly higher for CM ($d\theta/d\Psi= 1.89 \pm 0.32$) than for OPM ($d\theta/d\Psi= 0.34 \pm 0.05$). However, when suction was greater than 10 kPa, the value of specific water capacity tended to be similar for both treatments, with no significant differences ($p > 0.05$) above 32 kPa ($d\theta/d\Psi= 0.10 \pm 0.01$) (Fig. 2). This means that the soil under CM presented a higher population of macropores (gravitational water) (see section 3.3) than OPM. As macropores drain quickly at low suctions, when these macropores become empty, the volume of soil capable of storing capillary/available water is then reduced. Consequently, up to 100 kPa, the soil under OPM stored a higher amount of water (ca. 10-15 %) per unit of volume than under CM (Fig. 2).

3.2 S index

The S-index obtained from both the van Genuchten equation (Table 2) and the ad hoc sigmoidal equation (Table 3) showed no significant differences ($p > 0.05$) between both treatments. However, it should be noted that the S values obtained from the van Genuchten equation showed a better performance, with a dispersion one order of magnitude smaller than that obtained from the ad hoc sigmoidal equation.

The S value for the two study treatments reflected good soil physical quality ($0.035 < S < 0.050$) for the van Genuchten equation (Table 2) and very good (≥ 0.050) for the sigmoidal equation (Table 3) (Bacher et al., 2019; Dexter, 2004b; Reynolds et al., 2009).

van Genuchten Approximation. Despite the different behavior of the SWRCs observed for both treatments (Fig. 2), the S index (Dexter, 2004a, b) did not reflect those differences ($p > 0.05$) (Table 2).

Table 2. S index values, and contents of water (θ) and suction (Ψ) corresponding to the inflection point, obtained with the van Genuchten equation, and van Genuchten parameters. Mean \pm standard deviation of the mean (n=3). All the differences are not statistically significant ($p > 0.05$).

S index	Inflection point		van Genuchten parameters				
	θ_g (%)	Ψ (kPa)	α	n	m	θ_{sat} (%)	
OPM	0.035 ± 0.002	33.80 ± 4.71	23.85 ± 20.19	0.07 ± 0.07	1.11 ± 0.02	0.10 ± 0.02	42.96 ± 0.05
CM	0.035 ± 0.007	31.66 ± 3.80	6.22 ± 4.01	0.18 ± 0.15	1.12 ± 0.03	0.11 ± 0.02	40.73 ± 0.05

Con formato: Normal, Espacio Después: 12 pto

Con formato: Fuente: Cursiva

Treatment	S index	Inflection point	
		θ (%)	Ψ (kPa)
Optimized (OPM)	0.035 ± 0.002	33.80 ± 0.98	23.85 ± 6.70
Conventional (CM)	0.035 ± 0.007	31.66 ± 0.55	6.22 ± 2.15

Tabla con formato

Tabla con formato

Con formato: Espacio Antes: 12 pto

In this sense, it must be observed that the water content corresponding to the inflection point of both treatments was close to moisture at field capacity. This agrees with the results of Dexter and Bird (2001), who affirmed that the water content related to the inflection point is optimal for tillage and was herein considered as close to field capacity.

Approximation with a sigmoidal equation adjusted to experimental data. In the sigmoidal equation, as with van Genuchten, no differences were observed between optimized management and conventional management ($p > 0.05$) (Table 3). In addition, the sigmoidal equation proposed herein presented a dispersion of S values one order of magnitude higher than when calculated from the van Genuchten's equation for both treatments (Tables 2 and 3). In spite of this, it should be noted that the modeled SWRCs closely matched the experimental data.

Table 3. S index values and contents of water (θ) and suction (Ψ) corresponding to the inflection point, obtained with the sigmoidal equation adjusted to experimental data. Mean \pm standard deviation of the mean (n=3). Statistically significant differences ($p < 0.05$) are in bold.

Treatment	S index	Inflection point	
		θ (%)	Ψ (kPa)
Optimized (OPM)	0.040 ± 0.016	36.53 ± 0.98	6.97 ± 6.70
Conventional (CM)	0.057 ± 0.012	29.57 ± 0.81	9.53 ± 2.15

Con formato: Fuente: Negrita

Con formato: Fuente: Negrita

Con formato: Espacio Antes: 12 pto

The S value for the two study treatments reflected good soil physical quality ($0.035 < S \leq 0.050$) for the van Genuchten equation (Table 2) and *very good* (≥ 0.050) for the sigmoidal equation (Table 3) (Bacher et al., 2019; Dexter, 2004b; Reynolds et al., 2009).

Overall, it can be concluded from these observations that the S index, whichever method used for its determination, did not show sensitivity to soil management under the conditions of the present investigation. This is in line with the observations of Alonso et al. (2022), who recently reported overall *good* S values in silt loam and sandy loam soils subjected to moldboard plowing, deep loosening and minimum tillage managements. In contrast, this diagnosis did not hold for other soil physical quality indicators studied (Alonso et al., 2022).

This lack of differences can be explained, at least partially, by the fact that Dexter (2004a) related the S index to changes in both bulk density and soil type, whereas in our study the texture of the two study treatments was very similar (Table S1), and there were no significant differences in bulk density ($p > 0.05$, Table 1).

3.3 Bi-modal approach

Experimental results were plotted as differential functions [$d\theta/d(\log h)$ vs $\log h(h)$] seeking for a multimodal behavior: all the curves analyzed seemed to be of the uni-modal type (data not shown). However, it should be noted that suction values did not exceed 150 kPa, and according to Dexter et al. (2008) (cf. their Fig. 3) and Jensen et al. (2019) (cf. their Fig. 2) findings the second peak defining a bimodal behavior seems to appear at suction around 1000 kPa. Then, we tried again incorporating to the dataset the water content-suction measurements at 1500 kPa with the same result, i.e. unimodal behavior. But this could be an artifact of the dataset since there is a wide experimental gap between 150 kPa and 1500 kPa, i.e. no measurements in between.

Despite this, the double-exponential equation for soil water retention proposed by Dexter et al. (2008) was explored (Eq.3) (Table 4). The structural pore space would have been reduced by 35% as a result of no-tillage (OPM) (cf. A_2 values, Table 4), while the matrix pore space values remain rather constant in both treatments (cf. A_1 values in Table 4).

410

Table 1. Average values of the fitted parameters of the double-exponential water retention equation by Dexter et al. (2008) obtained with the experimental dataset. Mean ± standard deviation of the mean (n=3). All the differences are not statistically significant (p > 0.05).

Treatment	Parameters of the Dex model					
	C	A ₁	h ₁	A ₂	H ₂	RMSE
	m ³ ·m ⁻³	m ³ ·m ⁻³	hPa	m ³ ·m ⁻³	hPa	m ³ ·m ⁻³
OPM	0.25 ± 0.04	0.11 ± 0.02	865 ± 495	0.06 ± 0.04	29.9 ± 21.9	0.005 ± 0.005
CM	0.20 ± 0.01	0.11 ± 0.02	737 ± 332	0.10 ± 0.03	25.2 ± 9.83	0.003 ± 0.001

3.4 WRa index

The soil under OPM (WRa= 4.6 ± 0.5; average ± standard deviation) seemed to have a better structure than the soils under CM (WRa= 4.1 ± 1.1) (Table 5) because the former held the same relative fraction of water with more absolute energy in its porous system (Armino and Wendroth, 2016). However, this difference between treatments was not statistically significant due to the large variability observed in the CM treatment (Table 5).

415

Table 2. Absolute water retention energy (WRa) values for the two treatments (OPM, CM). All the differences are not statistically significant (p > 0.05).

Treatment	WRa (kPa)
OPM - repetition 1	4.8
OPM - repetition 2	4.9
OPM - repetition 3	4.1
CM - repetition 1	5.4
CM - repetition 2	3.5
CM - repetition 3	3.3

3.3.5 Analysis of the pores size-distribution

Fig. 3 depicts the accumulated frequency of pore diameter (mean of the three replicates) for the study soil under OPM and CM, and the classification of pore sizes according to the Soil Science Society of America (Weil and Brady, 2017).

Figure 3. Accumulated frequency of pore sizes (mean of three replicates) of the soil under the two studied treatments (OPM and CM), and pore size classification (Weil and Brady, 2017). Note: X-axis in logarithmic scale.

Con formato: Fuente: Negrita

For both treatments, the percentage of mesopores (equivalent diameter between 30 and 80 μm) was similar (5.6 ± 0.7 in OPM and 8.0 ± 1.3 in CM) ($p > 0.05$). The mesopores (Fig. 3) are associated with water retention after free drainage, with a suction that enables easy extraction by plants (readily accessible water), transmitting water by capillarity to the radicular zone (Weil and Brady, 2017). It is therefore considered that the population of mesopores partially reflects the physical quality of a cultivated soil, and it can therefore be inferred that OPM did not produce remarkable changes in the soil structure associated to this pore size range compared to CM. Similarly, the population of smaller pores (micropores, with equivalent diameter between 5 and 30 μm) did not present significant differences for both treatments ($15.5 \pm 1.1\%$ in OPM and $16.4 \pm 2.3\%$ in CM, Fig. 3) ($p > 0.05$), which confirmed the textural homogeneity of the soil in both treatments (Table 1), as this porosity is more associated with its soil texture than the soil structure (Pagliai et al., 2004).

On the contrary, the proportion of pores with equivalent diameters $> 80 \mu\text{m}$ (macropores) differed between treatments ($p < 0.05$). For CM, macropores represented $27.7 \pm 4.8\%$ of total porosity and only $11.6 \pm 2.3\%$ for OPM. As such, in CM, the population of pores with equivalent diameter 500-1000 μm and $> 1000 \mu\text{m}$ represented $5.5 \pm 1.3\%$ and $4.4 \pm 2.2\%$, respectively. For OPM, the population of pores larger than 500 μm —considered mainly as fissures (Pagliai et al., 2004)—was $2.8 \pm 1.3\%$, with no apparent presence of pores larger than 1000 μm ($< 1.3 \pm 0.7\%$). This explains the fast desorption rate at low suction values (high specific water capacity) observed in CM compared with OPM (Fig. 2). This can be understood if the soil consolidated after its disaggregation by tillage (which was carried out four months before sampling), maintaining a significant presence of macropores ($> 500 \mu\text{m}$) formed as a consequence of tillage. It is likely that, the presence of these pores induced by tillage would have been more remarkable right after tillage (a few days after), leading to a more pronounced difference in specific water capacity values between both treatments. As macropores drain quickly at low suctions, when these macropores become empty, the volume of soil capable of storing capillary/available water is then reduced. Consequently, up to 100 kPa, the soil under OPM could eventually stored a higher amount of water (ca. 10-15%) per unit of volume than under CM (Fig. 2).

Pires et al. (2017) evaluated the effect of tillage and direct seeding on the structure of an Oxisol through the analysis of SWRCs and micromorphological assessments. From their results, it can be observed (see Fig. 1 and 2, Pires et al., 2017) that the soil under conventional tillage reduced its water content (starting from saturation) by 15 % when a suction of approximately 20 cm was applied. For the soil under direct seeding, the decrease was only of 5 %. For the depth range 10-30 cm, the changes in

moisture content with suction were similar for both treatments. In addition, in the soil under direct seeding pores within the size range 50-500 μm —responsible for draining excess water (Greenland and Pereira, 1977)—occupied 39 % of the total porous space, while for tilled soil the percentage was slightly over 60 %.

In agronomic and climatic conditions closer to the soil studied here, Pagliai et al. (1984) studied the size distribution of size and shape of soils in a clay loamy vertic soil under conventional tillage and direct seeding, using micromorphological image analysis of soil thin sections. The size distribution of pore was more regular in the soil under direct seeding than under conventional tillage. For direct seeding, 7 % of the total pores identified (=145) were macropores (500-1000 μm), occupying 25 % of the porous space (image area). For conventional tillage, in turn, the bias was considerable: 22 % of total pores (=45) corresponded to macropores (500-1000 μm and >1000 μm), occupying approximately 85 % of the porous space (Fig. 1, Pagliai et al., 1984).

3.46 Analysis of the size-distribution of stable aggregate

Mass losses during fractionation accounted for $3.6 \pm 0.2\%$ of the initial samples, with no differences between treatments (data not shown), which means that the differences found (Fig. 4) can be considered as a response to the studied treatments.

For both treatments, the percentage of aggregated soil within water-stable macro (Magg) or micro (magg) was $92.2 \pm 0.3\%$, and the non-aggregated as the (s+c) fraction presented $5.8 \pm 0.4\%$ of the initial mass (Fig. 4). However Within the aggregated fractions (Magg + magg), clear differences were observed in the size-distribution of aggregates ($p < 0.05$): Considering only the aggregated soil mass (i.e., excluding the non-aggregated (s+c) fraction), the soil under OPM had $75.9 \pm 2.6\%$ of stable macroaggregates (Magg, > 250 μm); while this percentage was of $57.5 \pm 2.1\%$ for CM.

In relation to the composition of Magg, both cPOM and mMagg, represented a greater proportion of Magg in OPM in comparison to CM (where M(s+c) represented a greater proportion of total Magg mass) (Fig.4). It has to be noted that both cPOM and mMagg although both included an undetermined percentage of sand particles; However, the similar texture of the soil for both treatments (Table S1) allows to consider that the greater amount of cPOM and mMagg observed in OPM in comparison to CM (where M(s+c) represented a greater proportion of total Magg mass) (Fig. 4) were a consequence of management in the study site; the observed differences cannot be attributed to differences in the sand content.

The preponderance of Magg under OPM reflects better soil condition (or lower degradation) than under CM, in terms of aggregates stability. As conceptualized in the hierarchical model of soil aggregation (Angers et al., 1997; Beare et al., 1994; Golechin et al., 1994; Oades, 1984; Six et al., 1999, 2004; Tisdall and Oades, 1982), while magg are formed and stabilized mostly by the action of persistent agents (e.g., cationic complexes, humidified organic matter), Magg result from the union of these microaggregates among themselves by the action of transitory agglutinating agents (hyphae and mycorrhizae, microbial and vegetable derivatives. According to this hierarchical vision of soil aggregation, these agglutinating agents are, in turn,

480 widely conditioned by soil management: the formation of (macro) aggregates is thus favored by the lower degree of soil disturbance by tillage, higher inputs of crop (organic) residues in the soil organic matter pool, and the punctual organic amendments used in OPM (Jastrow, 1996; Lehmann and Kleber, 2015; Six et al., 2004; Tisdall and Oades, 1982). This observation is supported by the higher proportion of cPOM (Fig. 4) and total organic C (Table 1) found under OPM.

485 In addition, complementary analyses (Supplement 2) revealed higher microbial activity and microbial biomass C under OPM compared to CM, supporting a relationship between soil biological activity and aggregation in the studied soil (Six et al., 2002).

Figure 4. Size-distribution of stable aggregates and individual particles in the soil under OPM (a) and CM (b) Magg: Macroaggregates; magg: microaggregates; mMagg: microaggregates -within macroaggregates. s+c: silt+clay fraction; cPOM: coarse particulate organic matter >250 µm and sand particles. The error bars represent the standard error, which is the standard deviation divided by the square root of the sample size. All aggregate fractions are significantly different (p < 0.05) between OPM and CM, with the exception of mMagg.

Con formato: Fuente: Negrita

3.7 Organic C storage and soil microbial diversity

The distribution of soil organic C (SOC) among aggregate fractions is shown in Fig. 5. It is worth mentioning that, for the two management systems, the carbon recovery data after fractionation were satisfactory, since no more than 10% of the initial soil C was lost during the fractionation procedure (data not shown).

495 **Figure 5. Distribution of organic C in stable aggregates and individual particles in soil under OPM (a) and CM (b) Magg: Macroaggregates; magg: microaggregates; mMagg: microaggregates within macroaggregates. s+c: silt+clay fraction; cPOM: coarse particulate organic matter >250 µm and sand particles. The error bars represent the standard error, which is the standard deviation divided by the square root of the sample size. All aggregate fractions are significantly different (p < 0.05) between OPM and CM, with the exception of s+c and mMagg.**

500 In our study, soil management resulted not only in higher SOC concentration under OPM (Table 1), but also in a different distribution of SOC among aggregate size fractions. As such, OPM resulted in a higher proportion of SOC stored in Magg ($77.7 \pm 2.9 \text{ g C } 100 \text{ g}^{-1} \text{ soil C}$) than CM ($61.1 \pm 2.2 \text{ g C } 100 \text{ g}^{-1} \text{ soil C}$). Conversely, CM contained proportionally more SOC in magg and s+c, < 50 µm fractions. The greater proportion of SOC accumulated in Magg corresponded to that found in cPOM > 250 µm ($30.2 \pm 2.2 \text{ g C } 100 \text{ g}^{-1} \text{ Magg-C}$ in OPM for $11.1 \pm 1.4 \text{ g C } 100 \text{ g}^{-1} \text{ Magg-C}$ in CM).

505 In relation to the soil microbiological indicators, OPM did not only result in more MBC, but also in a higher efficiency for the degradation of organic substrates (degrading 29.17% more substrates than in the conventional system (NSU, Table 6)). Likewise, a more intense degradation of the substrates (> AWCD) was observed under OPM than CM.

510

Table 3. Biological indicators. Mean ± standard deviation of the mean (n=3). Statistically significant differences (p < 0.05) are in bold.

<u>Biological indices</u>	<u>Optimized (OPM)</u>	<u>Conventional (CM)</u>
<u>MBC (mg C/kg soil)</u>	<u>518 ± 35.2</u>	<u>318 ± 35.2</u>
<u>NSU</u>	<u>22.0 ± 0.58</u>	<u>17.0 ± 2.08</u>
<u>AWCD</u>	<u>0.79 ± 0.03</u>	<u>0.64 ± 0.06</u>

Finally, since this work was conducted in farmers' plots, yields were not explicitly measured as it is usually done in experimental fields, but some basic data are available from the farmers managing the fields (see Table 7 below). From these data, no apparent differences between treatments in crop yields occurred in the study area.

Table 4. Average crop yield (2016-2021) of OPM and conventional agricultural fields under conventional tillage (CM), as reported by farmers.

<u>Crop</u>	<u>Yields (t/ha)</u>	
	<u>OPM</u>	<u>CM</u>
<u>Wheat</u>	<u>6.8 - 9.3</u>	<u>5.5 - 7.0</u>
<u>Barley</u>	<u>5.8 - 8.0</u>	<u>5.0 - 6.5</u>
<u>Rapessed</u>	<u>2.0 - 4.0</u>	<u>2.0 - 3.0</u>
<u>Legumes</u>	<u>2.2 - 3.5</u>	<u>1.7 - 2.5</u>

515

4. Discussion

Dexter and Bird (2001) stated that one of the applications of the S-index was to identify the optimal water content for tillage, which would correspond to the inflection point of the SWRC. This is in agreement with our results: moisture contents corresponding to S values were all near field capacity (Tables 2 and 3), water content at which tillage produces the greatest proportion of small clods, which can be considered an achieved tillage.

Despite this observation, the S-index was not sensitive enough to reflect differences in the soil physical quality due to the different soil and crop managements assessed. This, despite the high degree of detail of the SWRCs used, which facilitates an optimal adjustment of the different mathematical functions applied. Alonso et al. (2022) also found no significant differences in S-index values between silt loam and sandy loam soils subjected to mouldboard plowing, deep loosening and minimum tillage managements, while other soil physical quality variables did show significant differences between those soils. The S-index is probably aimed at comparing soils in more contrasting conditions, especially in terms of bulk density, texture and organic matter content, as inferred from the case studies presented by Dexter, (2004a).

The differences in soil quality between the two forms of management (OPM vs CM) were better observed from the pore size distribution—obtained from the SWRCs—and by the analysis of size-distribution and stability of soil aggregates. To this respect, our results showed an overabundance of macropores ($> 80 \mu\text{m}$) under CM while the amount of mesopores (available water) and micropores were similar in both treatments (Fig. 3). In other works in which SWRCs were used for the long-term study of pore size distribution in no-tillage (NT) and conventional tillage (CT) management, it was found that there is no unanimity in the results obtained (Wardak et al., 2022). Pires et al. (2017) evaluated the effect of tillage and direct seeding on the structure of an Oxisol through the analysis of SWRCs and micromorphological assessments. From their results, it can be observed (see Fig. 1 and 2, Pires et al., 2017) that the soil under conventional tillage reduced its water content (starting from saturation) by 15% when a suction of approximately 20 cm was applied. For the soil under direct seeding, the decrease was only of 5%. For the depth range 10-30 cm, the changes in moisture content with suction were similar for both treatments. In addition, in the soil under direct seeding pores within the size range 50-500 μm —responsible for draining excess water (Greenland and Pereira, 1977)—occupied 39% of the total porous space, while for tilled soil the percentage was slightly over 60%. Lipiec et al. (2006) observed that the pore system of a silty clay loam soil under CT presented greater macroporosity, with the differences between tillage treatments being more pronounced in the 0-10 cm depth than in the 10-20 cm depth. Similar results were obtained in clayey soils by Tuzzin de Moraes et al. (2016) and Borges et al. (2019), who identified significantly higher macroporosity in CT treatment compared to NT. In contrast, Imhoff et al. (2010) and Gao et al. (2019) observed increased macroporosity in the NT treatment in a silty loam soil and a sandy loam soil, respectively.

In addition, in the study of micro- and mesopores, most studies have observed an increase of these pores under NT compared to CT. Examples are the works of Borges et al., (2019), Lipiec et al. (2006) and Tuzzin de Moraes et al. (2016), whose analysis

of SWRCs showed a higher volume of micropores and mesopores under NT than under CT. However, in the study by Imhoff et al. (2010) a decrease in micro- and mesopore volume under NT was recorded. Similarly, Gao et al. (2019) saw reduced mesoporosity in NT soil, observing no significant effect of such reduction on the soil hydraulic properties. It has to be noted that these pores are relevant for soil functioning, as mesopores are associated with water retention after free drainage, with a suction that enables easy extraction by plants (available water), transmitting water by capillarity to the radicular zone (Weil and Brady, 2017).

In any event, it seems from this variability of results, that the impact on soil management on soil porosity is site-dependent. In agronomic and climatic conditions closer to the soil studied here, Pagliai et al. (1984) studied the size distribution of size and shape of soils in a clay loamy vertic soil under conventional tillage CT and direct seeding NT, using micromorphological image analysis of soil thin sections. The size-distribution of pore was more regular in the soil under direct seeding than under conventional tillage. For direct seeding, 7-% of the total pores identified (=145) were macropores (500-1000 μm), occupying 25-% of the porous space (image area). For conventional tillage, in turn, the bias was considerable: 22-% of total pores (=45) corresponded to macropores (500-1000 μm and $>1000 \mu\text{m}$), occupying approximately 85-% of the porous space (Fig. 1, Pagliai et al., 1984). This greater macroporosity in OPM can explain the fast desorption rate at low suction values (high specific water capacity) observed in CM compared with OPM (Fig. 2).

The overabundance of macropores in soils under CM in our study could be to some extent explained by an increase in soil fragments rather than soil aggregates in the CM in comparison with OPM treatment. Soil aggregates and fragments may look similar but are formed by different processes and have different properties (Or et al., 2021)(Or et al., 2021)(Or et al., 2021): soil fragments form by mechanical forces of tillage; they tend to be mechanically weak and coalesce upon wetting with macroporosity collapsing within a single season. Instead, soil aggregation is stimulated by biological activity with biopolymers and hyphae that stabilize and bind soil particles. In short, soil aggregates are more stable than soil fragments. Borges et al. (2019) observed significantly higher macroporosity in a soil under conventional tillage compared to a soil under minimum tillage; they explained this to the mechanical action of tillage. The non-bimodal behavior of our SWRCs did not allow to verify this extent from the A_2 values (Dexter et al., 2008), theoretically corresponding to the structural pore space (Table 4).

In relation to aggregation, Fuentes-Guevara et al. (2022) found a significant correlation between hydraulic-energy based indices –including WRA– with some physical properties before and after land leveling operations, indicating their capacity to capture soil structure changes. The high variability observed for this index in CM (Table 5) hindered however their use for such an assessment in our case. However, the preponderance of Magg under OPM (Fig. 4) can be understood as a consequence reflects better soil condition (or lower degradation) than under CM, in terms of aggregates stability. As conceptualized in the hierarchical model of soil aggregation (Angers et al., 1997; Beare et al., 1994; Golchin et al., 1994; Oades, 1984; Six et al., 1999, 2004; Tisdall and Oades, 1982), while magg are within Magg, and formed and stabilized mostly by the action of persistent agents (e.g., cationic complexes, humidified organic matter), Magg are stabilized result from the

Con formato: Espacio Después: 12 pto

580 union of these microaggregates among themselves by the action of transitory agglutinating agents (hyphae and mycorrhizae, microbial and vegetable derivatives). The main implication of this hierarchy is that agricultural management primarily affects the less stable macroaggregates, while the more stable microaggregates are less influence. Implicit in this concept is the fact that aggregates form sequentially (Jarvis, 2012). According to this hierarchical vision of soil aggregation, these agglutinating agents are, in turn, widely conditioned by soil management: the formation of (macro) aggregates is thus favored by the lower 585 degree of soil disturbance by tillage, higher inputs of crop (organic) residues in the soil organic matter pool, and the punctual organic amendments used in OPM (Jastrow, 1996; Lehmann and Kleber, 2015; Six et al., 2004; Tisdall and Oades, 1982). This observation is supported by the higher proportion of cPOM (Fig. 4) and total organic C (Table 1) found under OPM, as explained below.

590 Although the relationship between organic matter cycling and soil structural stabilization has been observed to be soil-dependent (Rasmussen et al., 2018), and the calcareous nature of the studied soil may interact with it by stabilizing Magg and magg to a greater extent than in Ca-free soils (Fernández-Ugalde et al., 2011; Rowley et al., 2018, 2021), the greater accumulation of SOC within stable Magg in OPM than CM (Fig.5), suggests that the response of soil structure to the reduction of tillage and the increase in organic C inputs corresponded to that observed previously in other soil types (Six et al., 2004; Fernández-Ugalde et al., 2016), and in soils of the same type in the region (Virto et al., 2007; Yagüe et al., 2016).

595 In relation to our objectives, these results indicate that the changes observed in the physical soil indicators studied above can be related to a more positive SOC balance, very likely related to more inputs from vegetation cover and fewer interruptions of the SOC cycling due to tillage. Soil C storage is generally observed as a key soil property, related to both soil functioning and the global C cycle. As such, it has been proposed as an indicator for several soil functions, including nutrient recycling, functioning of soil ecosystems, pollution control, food security and global change (Paul, 2016).

600 In addition, the accumulation of cPOM, which has been repeatedly identified as a fast cycling pool, and a precocious indicator of changes in SOC cycling (Cotrufo et al., 2019), can be understood as the result of SOC cycling being more active, and resulting in a greater proportional accumulation of labile forms of SOC under OPM than CM (Lehmann and Kleber, 2015).

The idea of a more active SOC cycle under OPM was supported by the observed In addition, complementary analyses (Supplement 2) revealed higher microbial activity and microbial biomass C under OPM compared to CM (Table 6), supporting 605 a relationship between soil biological activity and aggregation in the studied soil, which can be associated with better conditions for SOC degradation and stabilization under OPM (Six et al., 2002).

Other relevant consequences of the observed results in the topsoil of the studied sites can be those related to the control of soil losses through erosion. This depends, among other factors such as ground cover (granted by OPM), on the soil own resistance to slaking and aggregates breakdown, and on the infiltration rates. Greater resistance of aggregates was clearly observed in

OPM in our study, suggesting reduced erodibility. This supports the view of the use of cover crops in sensitive areas (Panagos et al., 2021) as a useful tool for the involvement of farmers in the reduction of erosion rates (Panagos et al., 2021; Mosavi et al., 2020; Grillakis et al., 2020; Eekhout and De Vente, 2020; Paroissien et al., 2015). In addition, although the assessment of water infiltration and hydraulic conductivity of the soil in field conditions are beyond the scope of this work, and without other consideration such as the possible existence of compacted layers at depth caused by tillage (Fernández-Ugalde et al., 2009), this suggests a faster infiltration of water under this treatment. Considering the vulnerable character of this area with respect of groundwater pollution by nitrates, this would indicate a worse condition of soils in the area under conventional practices in terms of reaching the environmental goals in relation to fresh water quality set by the EU (Fetting, 2020), the UN (Rattan et al., 2018) and other national and regional environmental policies.

Finally, it has to be noted that agricultural sustainability cannot forget the interest of farmers. Although yield data were available only from indirect sources (Table 7), they suggest that the implementation of OPM did not imply a relevant reduction of yields in the study area, as is often observed when reduced input strategies are introduced in some agrosystems. For instance, Or et al. (2021) have reported an average reduction of 10% yields upon NT adoption.

In summary, and from a general point of view of the sustainability of agricultural management and the multifunctionality of soils (Bouma et al., 2019), these results indicate that OPM did not only result in differences in water retention and soil structure that can contribute to improve water-use efficiency and crops productivity, but also in enhanced biodiversity and increased SOC storage. OPM seems from this perspective, a useful tool in face to the present challenges and commitments of agriculture in Europe and worldwide (Bouma et al., 2022; Panagos et al., 2022).

5. Conclusions

A pioneer and unique in the region (Navarre, Spain) optimized soil and crop management system that includes, among other techniques, reduced tillage, crop rotations, and the occasional application of organic amendments was assessed for the soil physical quality after 18 years of its implementation. Our findings suggest, first, that some classical approaches to the assessment of SWRCs cannot capture the actual consequences of the use of these optimized management strategies on soil quality. However, detailed SWRCs were seen useful to identify relevant changes in soil porosity.

In relation to the physical quality of the soil, the innovative management tested here provided good results after 18 years – highlighting the proportion and size of water-stable soil macroaggregates–. It also contributed to a more abundant and diverse soil microbial population, and could contribute to an improvement in water use efficiency. This is especially relevant for rainfed agriculture where water is the most limiting factor for crops growth, such as the study zone.

The optimized management analyzed herein can therefore be recommended for higher soil sustainability in Mediterranean agrosystems. However, it is not currently a widespread practice in the region; most likely because the high initial investment and the farmer's concern that crop yields would be reduced. This work illustrates the need for an adequate assessment and dissemination to overcome these reluctances of farmers and other potential barriers to the adoption of this type of systems.

Further analysis at deeper soil layers –at least to the rooting depth– are necessary for a more complete assessment of the proposed optimized management. Moreover, to better understand changes in the soil hydrology, it is necessary to carry out experiments to determine infiltration rates, preferably under controlled suction.

From the analysis of detailed SWRCs, it was possible to carry out a complete characterization of the porous space of a typical cultivated topsoil (0-5 cm) from a semi-arid area in the region of Navarre (N Spain), after 18 years of application of an optimized soil management strategy, combining no tillage with crop rotations and organic amendments, and for the same soil under conventional tillage.

The proportion of macropores/fissures (gravitational water) was remarkably higher with conventional management. Consequently, the soil submitted to the optimized management strategy stored up to 10 % more capillary/available water. This difference seems specially relevant for rainfed agriculture at a *xeric* regime area where water is the most limiting factor for crops growth, such as the study zone.

Direct seeding and the associated practices combined in the optimized management strategy promoted also a better structure of the soil, reflected in the proportion and size of water stable (macro)aggregates, very likely due to the increased accumulation of agglutinating agents (vegetable and microbial derivatives). In addition, it is likely that the vegetable cover maintained in this management can also preserve the integrity of aggregates from the action of erosive agents.

It is noteworthy that, despite these clear differences observed in soil structure and water retention, the S index (Dexter, 2004a, b) did not reveal significant differences between treatments. This was so because the inflection point in the SWRCs that defines the value of S_e was located approximately within the range of suctions/water content where the value of specific moisture capacity for both treatments was similar.

It is therefore recommended to evaluate other mathematical indices with a more integrative focus on the water retention curve to assess the changes in soil porosity and water retention induced by management in soils like the one studied here.

The relevance of soil water retention and infiltration at the soil surface in rainfed systems in semi-arid land make these results highly relevant, although similar experiments at deeper soil layers are needed for a complete assessment of the optimized management studied here.

670 In summary, our results suggest that this type of system that includes, among other techniques, the suppression of tillage, crop rotations, and the application of organic amendments, is providing good results from the viewpoint of the physical quality of the soil. This can be translated into higher soil sustainability in Mediterranean agrosystems. However the optimized management analyzed herein is not currently a widespread practice in the region, which illustrates the need for an adequate assessment and dissemination to overcome the reluctance of farmers and other potential barriers to the adoption of this type of systems.

Data availability. The data that support the findings of this study are available from the corresponding author upon reasonable request.

675 **Author contribution.** RG and IV conceptualized and supervised the paper. LA designed the experiments and AA carried them out. RG, MC and AA visualized the project, did the formal analysis, and conducted the investigation with IV, who also collected the resources. AA prepared the manuscript with contributions from all co-authors.

Competing interests. The contact author has declared that neither herself nor her co-authors have any competing interest.

680 **Financial support.** This study was developed within the framework of project 011-1365-2020-000075 CropStick: sentinel of salts, pH, nitrogen and nutrients, and deep percolation, financed by the Government of Navarre.

References

685 Alonso, A., Froidevaux, M., Javaux, M., Laloy, E., Mattern, S., Roisin, C., Vanclooster, M., and Biielders, C.: A hybrid method for characterizing tillage-induced soil physical quality at the profile scale with fine spatial details, Soil Tillage Res., 216, 105236, <https://doi.org/10.1016/j.still.2021.105236>, 2022.

Angers, D. A., Recous, S., and Aita, C.: Fate of carbon and nitrogen in water-stable aggregates during decomposition of 13C15N-labelled wheat straw in situ, Eur. J. Soil Sci., 48, 295–300, <https://doi.org/10.1111/j.1365-2389.1997.tb00549.x>, 1997.

690 Armindo, R. A. and Wendroth, O.: Physical Soil Structure Evaluation based on Hydraulic Energy Functions, Soil Sci. Soc. Am. J., 80, 1167–1180, <https://doi.org/10.2136/sssaj2016.03.0058>, 2016.

Bacher, M. G., Schmidt, O., Bondi, G., Creamer, R., and Fenton, O.: Comparison of Soil Physical Quality Indicators Using Direct and Indirect Data Inputs Derived from a Combination of In-Situ and Ex-Situ Methods, Soil Sci. Soc. Am. J., 83, 5–17, <https://doi.org/10.2136/sssaj2018.06.0218>, 2019.

695 Beare, M. H., Hendrix, P. F., Cabrera, M. L., and Coleman, D. C.: Aggregate-Protected and Unprotected Organic Matter Pools in Conventional- and No-Tillage Soils, Soil Sci. Soc. Am. J., 58, 787–795, 1994.

Con formato: Sangría: Izquierda: 0 cm, Sangría francesa: 1,27 cm

- Bescansa, P., Imaz, M. J., Virto, I., Enrique, A., and Hoogmoed, W. B.: Soil water retention as affected by tillage and residue management in semiarid Spain, *Soil Tillage Res.*, 87, 19–27, <https://doi.org/10.1016/j.still.2005.02.028>, 2006.
- 700 Borges, J. A. R., Pires, L. F., Cássaro, F. A. M., Auler, A. C., Rosa, J. A., Heck, R. J., and Roque, W. L.: X-ray computed tomography for assessing the effect of tillage systems on topsoil morphological attributes, *Soil Tillage Res.*, 189, 25–35, <https://doi.org/10.1016/j.still.2018.12.019>, 2019.
- Bouma, J.: Soil science contributions towards Sustainable Development Goals and their implementation: Linking soil functions with ecosystem services, *J. Plant Nutr. Soil Sci.*, 177, 111–120, <https://doi.org/10.1002/jpln.201300646>, 2014.
- 705 Bouma, J., Montanarella, L., and Evanylo, G.: The challenge for the soil science community to contribute to the implementation of the UN Sustainable Development Goals, *Soil Use Manag.*, 35, 538–546, <https://doi.org/10.1111/sum.12518>, 2019.
- Bouma, J., Pinto-correia, T., and Veerman, C.: Assessing the role of soils when developing sustainable agricultural production systems focused on achieving the un-sdgs and the eu green deal, *Soil Syst.*, 5, <https://doi.org/10.3390/soilsystems5030056>, 2021.
- 710 Bouma, J., de Haan, J., and Dekkers, M. F. S.: Exploring Operational Procedures to Assess Ecosystem Services at Farm Level, including the Role of Soil Health, *Soil Syst.*, 6, <https://doi.org/10.3390/soilsystems6020034>, 2022.
- Brooks, R. H. and Corey, A. T.: Hydraulic properties of porous media and their relation to drainage design., *Trans. ASAE*, 7(1), 26-0028., 1964.
- 715 Bünemann, E. K., Bongiorno, G., Bai, Z., Creamer, R. E., De Deyn, G., de Goede, R., Flesskens, L., Geissen, V., Kuyper, T. W., Mäder, P., Pulleman, M., Sukkel, W., van Groenigen, J. W., and Brussaard, L.: Soil quality – A critical review, *Soil Biol. Biochem.*, 120, 105–125, <https://doi.org/10.1016/j.soilbio.2018.01.030>, 2018.
- Chenu, C., Angers, D. A., Barré, P., Derrien, D., Arrouays, D., and Balesdent, J.: Increasing organic stocks in agricultural soils: Knowledge gaps and potential innovations, *Soil Tillage Res.*, 188, 41–52, <https://doi.org/10.1016/j.still.2018.04.011>, 2019.
- 720 Costantini, E. A. C., Antichi, D., Almagro, M., Hedlund, K., Sarno, G., and Virto, I.: Local adaptation strategies to increase or maintain soil organic carbon content under arable farming in Europe: Inspirational ideas for setting operational groups within the European innovation partnership, *J. Rural Stud.*, 79, 102–115, <https://doi.org/10.1016/j.jrurstud.2020.08.005>, 2020.
- 725 Cotrufo, M. F., Ranalli, M. G., Haddix, M. L., Six, J., and Lugato, E.: Soil carbon storage informed by particulate and mineral-associated organic matter, *Nat. Geosci.*, 12, 989–994, <https://doi.org/10.1038/s41561-019-0484-6>, 2019.
- Council of the European Union: Council Directive 91/676/EEC of 12 December 1991 concerning the protection of waters against pollution caused by nitrates from agricultural sources, , L 269, 1–15, 2008.
- Dexter, A. R.: Soil physical quality: Part I. Theory, effects of soil texture, density, and organic matter, and effects on root growth, *Geoderma*, 120, 201–214, <https://doi.org/10.1016/j.geoderma.2003.09.004>, 2004a.
- 730 Dexter, A. R.: Soil physical quality: Part II. Friability, tillage, tilth and hard-setting, *Geoderma*, 120, 215–225,

<https://doi.org/10.1016/j.geoderma.2003.09.005>, 2004b.

Dexter, A. R. and Bird, N. R. A.: Methods for predicting the optimum and the range of soil water contents for tillage based on the water retention curve, *Soil Tillage Res.*, 57, 203–212, [https://doi.org/10.1016/S0167-1987\(00\)00154-9](https://doi.org/10.1016/S0167-1987(00)00154-9), 2001.

Dexter, A. R., Czyz, E. A., Richard, G., and Reszkowska, A.: A user-friendly water retention function that takes account of the textural and structural pore spaces in soil, *Geoderma*, 143, 243–253, <https://doi.org/10.1016/j.geoderma.2007.11.010>, 2008.

Dirksen, C.: *Soil physics measurements.*, Catena Verlag, Reiskirchen (Germany), 154 pp., 1999.

Eekhout, J. P. C. and De Vente, J.: How soil erosion model conceptualization affects soil loss projections under climate change, *Prog. Phys. Geogr.*, 44, 212–232, <https://doi.org/10.1177/0309133319871937>, 2020.

Elliott, E. T.: Aggregate Structure and Carbon, Nitrogen, and Phosphorus in Native and Cultivated Soils, *Soil Sci. Soc. Am. J.* 50, 627–633., 1986.

Espejo-Pérez, A. J., Rodríguez-Lizana, A., Ordóñez, R., and Giráldez, J. V.: Soil Loss and Runoff Reduction in Olive-Tree Dry-Farming with Cover Crops, *Soil Sci. Soc. Am. J.*, 77, 2140–2148, <https://doi.org/10.2136/sssaj2013.06.0250>, 2013.

FAO: A protocol for measurement, monitoring, reporting and verification of soil organic carbon in agricultural landscapes, Rome, Italy, 140 pp., <https://doi.org/10.4060/cb0509en>, 2020.

Fernández-Ugalde, O., Virto, I., Bescansa, P., Imaz, M. J., Enrique, A., and Karlen, D. L.: No-tillage improvement of soil physical quality in calcareous, degradation-prone, semiarid soils, *Soil Tillage Res.*, 106, 29–35, <https://doi.org/10.1016/j.still.2009.09.012>, 2009.

Fernández-Ugalde, O., Virto, I., Barré, P., Gartzia-Bengoetxea, N., Enrique, A., Imaz, M. J., and Bescansa, P.: Effect of carbonates on the hierarchical model of aggregation in calcareous semi-arid Mediterranean soils, *Geoderma*, 164, 203–214, <https://doi.org/10.1016/j.geoderma.2011.06.008>, 2011.

Fernández-Ugalde, O., Barré, P., Virto, I., Hubert, F., Billiou, D., and Chenu, C.: Does phyllosilicate mineralogy explain organic matter stabilization in different particle-size fractions in a 19-year C3/C4 chronosequence in a temperate Cambisol?, *Geoderma*, 264, 171–178, <https://doi.org/10.1016/j.geoderma.2015.10.017>, 2016.

Fetting, C.: *The European Green Deal*, ESDN Office, Vienna, 2020.

Fuentes-Guevara, M. D., Armindo, R. A., Timm, L. C., and Faria, L. C.: Examining the land leveling impacts on the physical quality of lowland soils in Southern Brazil, *Soil Tillage Res.*, 215, 0–3, <https://doi.org/10.1016/j.still.2021.105217>, 2022.

Gao, L., Wang, B., Li, S., Wu, H., Wu, X., Liang, G., Gong, D., Zhang, X., Cai, D., and Degré, A.: Soil wet aggregate distribution and pore size distribution under different tillage systems after 16 years in the Loess Plateau of China, 173, 38–47, <https://doi.org/10.1016/j.catena.2018.09.043>, 2019.

van Genuchten, M. T.: A Closed-form Equation for Predicting the Hydraulic Conductivity of Unsaturated Soils, *Soil Sci. Soc. Am. J.*, 44, 892–898, <https://doi.org/10.2136/sssaj1980.03615995004400050002x>, 1980.

van Genuchten, M. T. and Nielsen, D. R.: On describing and predicting the hydraulic properties of unsaturated soils, *Ann. Geophys.*, 3, 615–628, 1985.

Gobierno de Navarra Meteorología y Climatología de Navarra: <http://meteo.navarra.es/>, last access: 21 June 2022.

Golchin, A., Oades, J. M., Skjemstad, J. O., and Clarke, P.: Soil structure and carbon cycling, *Aust. J. Soil Res.*, 32, 1043–1063, <https://doi.org/10.1071/SR9941043>, 1994.

Gómez, J. A., Sobrinho, T. A., Giráldez, J. V., and Fereres, E.: Soil management effects on runoff, erosion and soil properties in an olive grove of Southern Spain, *Soil Tillage Res.*, 102, 5–13, <https://doi.org/10.1016/j.still.2008.05.005>, 2009.

Greenland, D. J. and Pereira, H. C.: Soil damage by intensive arable cultivation: temporary or permanent?, *Philos. Trans. R. Soc. London. B, Biol. Sci.*, 281, 193–208, <https://doi.org/http://dx.doi.org/10.1098/rstb.1977.0133>, 1977.

Grillakis, M. G., Polykretis, C., and Alexakis, D. D.: Past and projected climate change impacts on rainfall erosivity: Advancing our knowledge for the eastern Mediterranean island of Crete, 193, 104625, <https://doi.org/10.1016/j.catena.2020.104625>, 2020.

Hendershot, W. H. and Lalonde, H.: Chapter 16. Soil Reaction and Exchangeable Acidity, in: *Soil Sampling and Methods of Analysis*, edited by: Carter, M. R., CRC Press LLC, Boca Ratón, FL, USA, 141–142, 1993.

Imhoff, S., Ghiberto, P. J., Grioni, A., and Gay, J. P.: Porosity characterization of Argiudolls under different management systems in the Argentine Flat Pampa, *Geoderma*, 158, 268–274, <https://doi.org/10.1016/j.geoderma.2010.05.005>, 2010.

Jarvis, S.: Landmark papers, *Eur. J. Soil Sci.*, 63, 1–21, <https://doi.org/10.1111/j.1365-2389.2011.01408.x>, 2012.

Jastrow, J. D.: Soil aggregate formation and the accrual of particulate and mineral-associated organic matter, *Soil Biol. Biochem.*, 28, 665–676, [https://doi.org/10.1016/0038-0717\(95\)00159-X](https://doi.org/10.1016/0038-0717(95)00159-X), 1996.

Jensen, J. L., Schjønning, P., Watts, C. W., Christensen, B. T., and Munkholm, L. J.: Soil Water Retention: Uni-Modal Models of Pore-Size Distribution Neglect Impacts of Soil Management, *Soil Sci. Soc. Am. J.*, 83, 18–26, <https://doi.org/10.2136/sssaj2018.06.0238>, 2019.

Klute, A.: Some Theoretical Aspects of the Flow of Water in Unsaturated Soils, *Soil Sci. Soc. Am. J.*, 16, 144–148, <https://doi.org/10.2136/sssaj1952.03615995001600020008x>, 1952.

Kosugi, K., Hopmans, J. W., and Dane, J. H.: Parametric Models, in: *Methods of Soil Analysis. Part 4 – Physical Methods*, edited by: Dane, J. H. and Clarke Topp, G., SSSA, Madison Wisconsin., 739–757, 2002.

Lahmar, R., Arrué, J. L., Denardin, J. E., Gupta, R. K., Ribeiro, M. F. S., de Tourdonnet, S., Abrol, I. P., Barz, P., de Benito, A., Bianchini, A., and Al, E.: Knowledge Assessment and Sharing on Sustainable Agriculture. Synthesis Report, Montpellier, France, 125 pp., 2007.

Lal, R., Bouma, J., Brevik, E., Dawson, L., Field, D. J., Glaser, B., Hatano, R., Hartemink, A. E., Kosaki, T., Lascelles, B., Monger, C., Muggler, C., Ndzana, G. M., Norra, S., Pan, X., Paradelo, R., Reyes-Sánchez, L. B., Sandén, T., Singh, B. R., Spiegel, H., Yanai, J., and Zhang, J.: Soils and sustainable development goals of the United Nations: An International Union of Soil Sciences perspective, *Geoderma Reg.*, 25, <https://doi.org/10.1016/j.geodrs.2021.e00398>,

Con formato: Español (España)

800

2021.

- Lehmann, J. and Kleber, M.: The contentious nature of soil organic matter, *Nature*, 528, 60–68, <https://doi.org/10.1038/nature16069>, 2015.
- Lipiec, J., Kuś, J., Słowińska-Jurkiewicz, A., and Nosalewicz, A.: Soil porosity and water infiltration as influenced by tillage methods, *Soil Tillage Res.*, 89, 210–220, <https://doi.org/10.1016/j.still.2005.07.012>, 2006.
- 805 Milly, P. C. D.: Estimation of Brooks-Corey Parameters, *Water Resour. Res.*, 23, 1085–1089, 1987.
- Minasny, B. and McBratney, A. B.: Limited effect of organic matter on soil available water capacity, *Eur. J. Soil Sci.*, 69, 39–47, <https://doi.org/10.1111/ejss.12475>, 2018.
- Mosavi, A., Sajedi-Hosseini, F., Choubin, B., Taromideh, F., Rahi, G., and Dineva, A. A.: Susceptibility mapping of soil water erosion using machine learning models, 12, 1–17, <https://doi.org/10.3390/w12071995>, 2020.
- 810 Oades, J. M.: Soil organic matter and structural stability: mechanisms and implications for management, *Plant Soil*, 76, 319–337, <https://doi.org/10.1007/BF02205590>, 1984.
- Oliveira, M., Barré, P., Trindade, H., and Virto, I.: Different efficiencies of grain legumes in crop rotations to improve soil aggregation and organic carbon in the short-term in a sandy Cambisol, *Soil Tillage Res.*, 186, 23–35, <https://doi.org/10.1016/j.still.2018.10.003>, 2019.
- 815 Or, D., Keller, T., and Schlesinger, W. H.: Natural and managed soil structure: On the fragile scaffolding for soil functioning, *Soil Tillage Res.*, 208, 104912, <https://doi.org/10.1016/j.still.2020.104912>, 2021.
- Ordóñez Fernández, R., González Fernández, P., Giráldez Cervera, J. V., and Perea Torres, F.: Soil properties and crop yields after 21 years of direct drilling trials in southern Spain, *Soil Tillage Res.*, 94, 47–54, <https://doi.org/10.1016/j.still.2006.07.003>, 2007.
- 820 Pagliai, M., La Marca, M., Lucamante, G., and Genovese, L.: Effects of zero and conventional tillage on the length and irregularity of elongated pores in a clay loam soil under viticulture, *Soil Tillage Res.*, 4, 433–444, [https://doi.org/10.1016/0167-1987\(84\)90051-5](https://doi.org/10.1016/0167-1987(84)90051-5), 1984.
- Pagliai, M., Vignozzi, N., and Pellegrini, S.: Soil structure and the effect of management practices, *Soil Tillage Res.*, 79, 131–143, <https://doi.org/10.1016/j.still.2004.07.002>, 2004.
- 825 Panagos, P., Ballabio, C., Himics, M., Scarpa, S., Matthews, F., Bogonos, M., Poesen, J., and Borrelli, P.: Projections of soil loss by water erosion in Europe by 2050, *Environ. Sci. Policy*, 124, 380–392, <https://doi.org/10.1016/j.envsci.2021.07.012>, 2021.
- Panagos, P., Montanarella, L., Barbero, M., Schneegans, A., Aguglia, L., and Jones, A.: Soil priorities in the European Union, *Geoderma Reg.*, 29, e00510, <https://doi.org/10.1016/j.geodrs.2022.e00510>, 2022.
- 830 Pansu, M. and Gautheyrou, J.: Chapter 17. Carbonates, in: *Handbook of Soil Analysis. Mineralogical, Organic and Inorganic Methods*, Springer Netherlands, Dordrecht, The Netherlands, 593–601, 2003a.
- Pansu, M. and Gautheyrou, J.: Chapter 18. Soluble Salts, in: *Handbook of Soil Analysis. Mineralogical, Organic and Inorganic Methods*, Springer Netherlands, Dordrecht, The Netherlands, 608–609, 2003b.

Papadakis, J.: Climatic Tables for the World, Soil Sci., 93, 76, 1967.

835 Paroissien, J. B., Darboux, F., Couturier, A., Devillers, B., Mouillot, F., Raclot, D., and Le Bissonnais, Y.: A method for modeling the effects of climate and land use changes on erosion and sustainability of soil in a Mediterranean watershed (Languedoc, France), J. Environ. Manage., 150, 57–68, <https://doi.org/10.1016/j.jenvman.2014.10.034>, 2015.

840 Paul, E. A.: The nature and dynamics of soil organic matter: Plant inputs, microbial transformations, and organic matter stabilization, Soil Biol. Biochem., 98, 109–126, <https://doi.org/10.1016/j.soilbio.2016.04.001>, 2016.

Pertassek, T., Peters, A., and Durner, W.: HYPROP-FIT User's Manual, 66, 2015.

Peters, A. and Durner, W.: Simplified evaporation method for determining soil hydraulic properties, J. Hydrol., 356, 147–162, <https://doi.org/10.1016/j.jhydrol.2008.04.016>, 2008.

Pires, L. F., Borges, F. S., Passoni, S., and Pereira, A. B.: Soil Pore Characterization Using Free Software and a Portable Optical Microscope, [Pedosphere](#), 23, 503–510, [https://doi.org/10.1016/S1002-0160\(13\)60043-0](https://doi.org/10.1016/S1002-0160(13)60043-0), 2013.

845 Pires, L. F., Borges, J. A. R., Rosa, J. A., Cooper, M., Heck, R. J., Passoni, S., and Roque, W. L.: Soil structure changes induced by tillage systems, Soil Tillage Res., 165, 66–79, <https://doi.org/10.1016/j.still.2016.07.010>, 2017.

Pittelkow, C. M., Liang, X., Linquist, B. A., Van Groenigen, L. J., Lee, J., Lundy, M. E., Van Gestel, N., Six, J., Venterea, R. T., and Van Kessel, C.: Productivity limits and potentials of the principles of conservation agriculture, Nature, 517, 850 365–368, <https://doi.org/10.1038/nature13809>, 2015.

Preston-Mafham, J., Boddy, L., and Randerson, P. F.: Analysis of microbial community functional diversity using sole-carbon-source utilisation profiles - A critique, FEMS Microbiol. Ecol., 42, 1–14, [https://doi.org/10.1016/S0168-6496\(02\)00324-0](https://doi.org/10.1016/S0168-6496(02)00324-0), 2002.

855 Rabot, E., Wiesmeier, M., Schlüter, S., and Vogel, H. J.: Soil structure as an indicator of soil functions: A review, Geoderma, 314, 122–137, <https://doi.org/10.1016/j.geoderma.2017.11.009>, 2018.

Rasmussen, C., Heckman, K., Wieder, W. R., Keiluweit, M., Lawrence, C. R., Berhe, A. A., Blankinship, J. C., Crow, S. E., Druhan, J. L., Hicks Pries, C. E., Marin-Spiotta, E., Plante, A. F., Schädel, C., Schimel, J. P., Sierra, C. A., Thompson, A., and Wagai, R.: Beyond clay: towards an improved set of variables for predicting soil organic matter content, Biogeochemistry, 137, 297–306, <https://doi.org/10.1007/s10533-018-0424-3>, 2018.

860 Rattan, L., Rainer, H., and Takashi, K.: Soil and Sustainable Development Goals, Catena Soils Science, Stuttgart, Germany, 196 pp., 2018.

Reynolds, W. D., Drury, C. F., Tan, C. S., Fox, C. A., and Yang, X. M.: Use of indicators and pore volume-function characteristics to quantify soil physical quality, Geoderma, 152, 252–263, <https://doi.org/10.1016/j.geoderma.2009.06.009>, 2009.

865 Rowley, M. C., Grand, S., and Verrecchia, É. P.: Calcium-mediated stabilisation of soil organic carbon, Biogeochemistry, 137, 27–49, <https://doi.org/10.1007/s10533-017-0410-1>, 2018.

Rowley, M. C., Grand, S., Spangenberg, J. E., and Verrecchia, E. P.: Evidence linking calcium to increased organo-mineral

association in soils, *Biogeochemistry*, 153, 223–241, <https://doi.org/10.1007/s10533-021-00779-7>, 2021.

Sartori, F., Piccoli, I., Polese, R., and Berti, A.: Transition to conservation agriculture: How tillage intensity and covering
870 affect soil physical parameters, 8, 213–222, <https://doi.org/10.5194/soil-8-213-2022>, 2022.

Schindler, U.: Ein Schnellverfahren zur Messung der Wasserleitfähigkeit im teilgesättigten Boden and Stechzylinderproben,
Arch. für Acker-und Pflanzenbau und Bodenkd., 24, 1–7, 1980.

Schindler, U., Durner, W., von Unold, G., Mueller, L., and Wieland, R.: The evaporation method: Extending the measurement
range of soil hydraulic properties using the air-entry pressure of the ceramic cup, *J. Plant Nutr. Soil Sci.*, 173, 563–
875 572, <https://doi.org/10.1002/jpln.200900201>, 2010.

Six, J., Elliot, E. T., and Paustian, K.: Aggregate and Soil Organic Matter Dynamics under Conventional and No-Tillage
Systems, *Soil Sci. Soc. Am. J.*, 63, 1350–1358, 1999.

Six, J., Callewaert, P., Lenders, S., De Gryze, S., Morris, S. J., Gregorich, E. G., Paul, E. A., and Paustian, K.: Measuring and
Understanding Carbon Storage in Afforested Soils by Physical Fractionation, *Soil Sci. Soc. Am. J.*, 66, 1981–1987,
880 <https://doi.org/10.2136/sssaj2002.1981.2002>.

Six, J., Bossuyt, H., Degryze, S., and Denef, K.: A history of research on the link between (micro)aggregates, soil biota, and
soil organic matter dynamics, *Soil Tillage Res.*, 79, 7–31, <https://doi.org/10.1016/j.still.2004.03.008>, 2004.

Soil Survey Staff: Keys to soil taxonomy, USDA-Natural Resour. Conserv. Serv. Washington, DC., 12, 360, 2014.

SPSS Inc.: Statistical Software, SPSS 27.0., 2021.

885 Taina, I. A., Heck, R. J., Deen, W., and Ma, E. Y. T.: Quantification of freeze-thaw related structure in cultivated topsoils
using X-ray computer tomography, *Can. J. Soil Sci.*, 93, 533–553, <https://doi.org/10.4141/CJSS2012-044>, 2013.

Tiessen, H. and Moir, J. O.: Total and organic C, in: *Soil Sampling and Methods of Analysis*, edited by: Carter, M., CRC Press
LLC, Boca Raton, FL, USA, 187–191, 1993.

Tisdall, J. M. and Oades, J. M.: Organic matter and water-stable aggregates in soils, *J. Soil Sci.*, 33, 141–163,
890 <https://doi.org/10.1111/j.1365-2389.1982.tb01755.x>, 1982.

De Turdonnet, S., Nozières, A., Barz, P., Chenu, C., Düring, R.-A., Frielinghaus, M., Kölli, R. ., Kubat, J., Magid, J.,
Medvedev, V., and Al., E.: Comprehensive Inventory and Assessment of Existing Knowledge on Sustainable
Agriculture in the European Platform of KASSA, Montpellier, France, 55 pp., 2007.

Tuzzin de Moraes, M., Debiassi, H., Carlesso, R., Cezar Franchini, J., Rodrigues da Silva, V., and Bonini da Luz, F.: Soil
895 physical quality on tillage and cropping systems after two decades in the subtropical region of Brazil, *Soil Tillage
Res.*, 155, 351–362, <https://doi.org/10.1016/j.still.2015.07.015>, 2016.

Vance, E. D., Brookes, D. S., and Jenkinson, D. S.: An extraction method for measuring soil microbial biomass C, *Soil Biol.
Biochem.*, 19, 703–707, [https://doi.org/https://doi.org/10.1016/0038-0717\(87\)90052-6](https://doi.org/https://doi.org/10.1016/0038-0717(87)90052-6), 1987.

Verhulst, N., Govaerts, B., Verachtert, E., Mezzalama, M., Wall, P. C., Chocobar, a, Deckers, J., and Sayre, K. D.: Improving
900 Soil Quality for Sustainable Production Systems?, *Food Secur. Soil Qual.*, 1–55, 2010.

Virto, I., Imaz, M. J., Enrique, A., Hoogmoed, W., and Bescansa, P.: Burning crop residues under no-till in semi-arid land,

Northern Spain - Effects on soil organic matter, aggregation, and earthworm populations, *Aust. J. Soil Res.*, 45, 414–421, <https://doi.org/10.1071/SR07021>, 2007.

905 Virto, I., Barré, P., Burlot, A., and Chenu, C.: Carbon input differences as the main factor explaining the variability in soil organic C storage in no-tilled compared to inversion tilled agrosystems, *Biogeochemistry*, 108, 17–26, <https://doi.org/10.1007/s10533-011-9600-4>, 2012.

Virto, I., Imaz, M. J., Fernández-Ugalde, O., Gartzia-Bengoetxea, N., Enrique, A., and Bescansa, P.: Soil degradation and soil quality in Western Europe: Current situation and future perspectives, *Sustain.*, 7, 313–365, <https://doi.org/10.3390/su7010313>, 2015.

910 Wardak, D. L. R., Padia, F. N., de Heer, M. I., Sturrock, C. J., and Mooney, S. J.: Zero tillage has important consequences for soil pore architecture and hydraulic transport: A review, *Geoderma*, 422, 115927, <https://doi.org/10.1016/j.geoderma.2022.115927>, 2022.

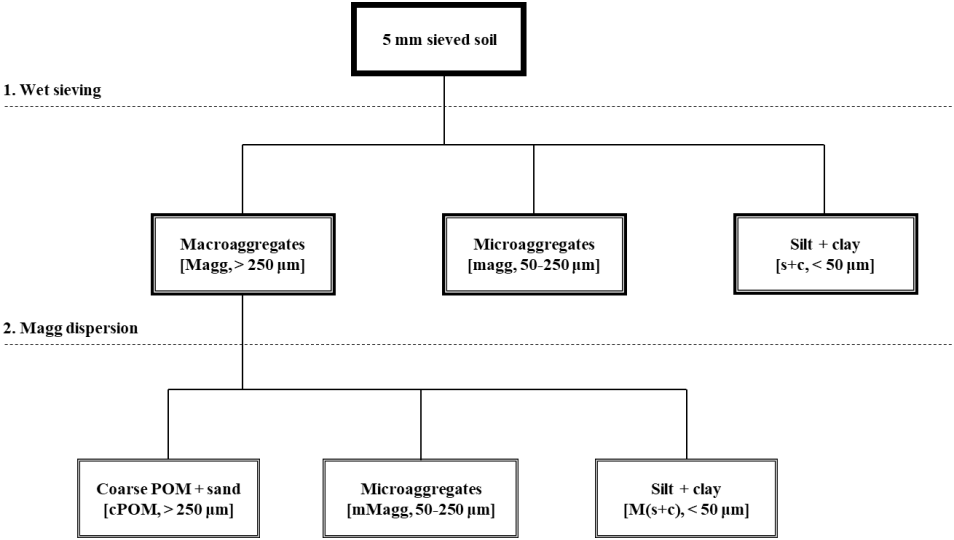
Warrick, A. W.: *Soil Water Dynamics*, Oxford University Press., Oxford, UK, 2003.

Weil, R. and Brady, N.: *The Nature and Properties of Soils*, 15th ed., 2017.

915 WRB, I. W. G.: World Reference Base for Soil Resources 2014, update 2015. International soil classification system for naming soils and creating legends for soil maps., <https://doi.org/10.1038/nnano.2009.216>, 2015.

Yagüe, M. R., Domingo-Olivé, F., Bosch-Serra, À. D., Poch, R. M., and Boixadera, J.: Dairy Cattle Manure Effects on Soil Quality: Porosity, Earthworms, Aggregates and Soil Organic Carbon Fractions, *L. Degrad. Dev.*, 27, 1753–1762, <https://doi.org/10.1002/ldr.2477>, 2016.

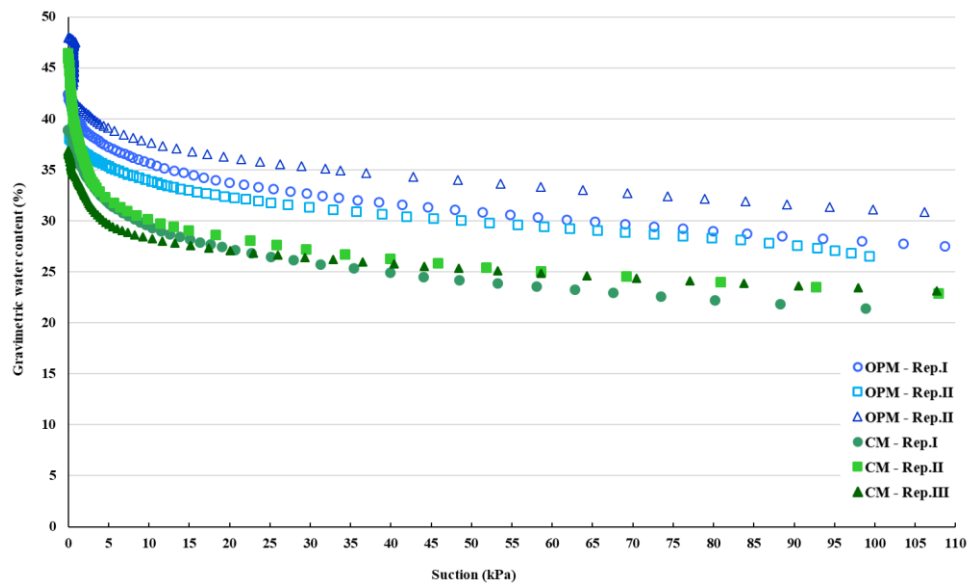
920 Zak, J. C., Willig, M. R., Moorhead, D. L., and Wildman, H. G.: Functional diversity of microbial communities: A quantitative approach, *Soil Biol. Biochem.*, 26, 1101–1108, [https://doi.org/10.1016/0038-0717\(94\)90131-7](https://doi.org/10.1016/0038-0717(94)90131-7), 1994.



925

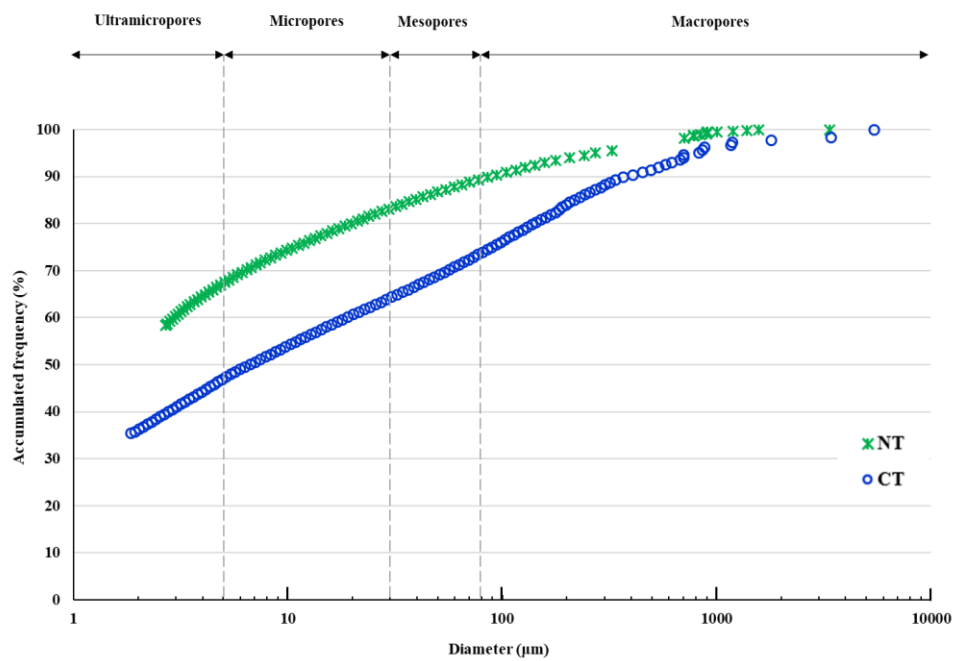
Figure 1. Scheme of the experimental protocol carried out for water-stable aggregates size-fractionation, as adapted from Oliveira et al. (2019).

Con formato: Interlineado: 1,5 líneas



930 Figure 2. Soil water retention curves for each replicate (n= 3) for the two treatments (optimized management (OPM) vs. Conventional management (CM)).

Con formato: Interlineado: 1,5 líneas



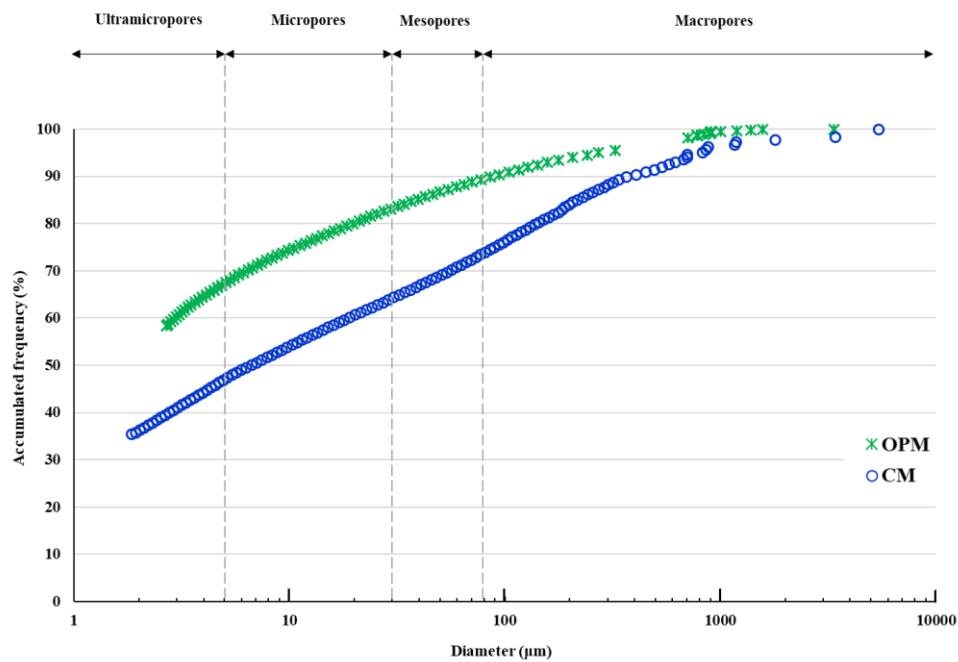


Figure 3. Accumulated frequency of pore sizes (mean of three replicates) of the soil under the two studied treatments (OPM and CM), and pore size classification (Weil and Brady, 2017). Note: X-axis in logarithmic scale.

Con formato: Interlineado: 1,5 líneas

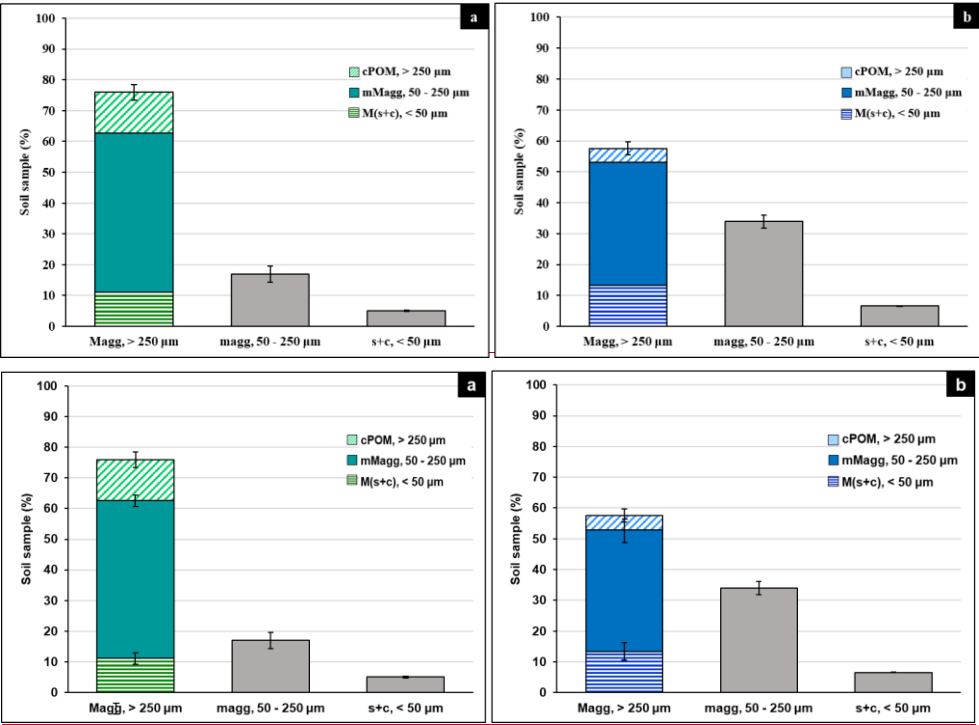


Figure 4. Size-distribution of stable aggregates and individual particles in the soil under OPM (a) and CM (b) Magg: Macroaggregates; magg: microaggregates; mMagg: microaggregates within macroaggregates. s+c: silt+clay fraction; cPOM: coarse particulate organic matter >250 μm and sand particles. The error bars represent the standard error, which is the standard deviation divided by the square root of the sample size. All aggregate fractions are significantly different ($p < 0.05$) between OPM and CM, with the exception of mMagg.

Con formato: Espacio Antes: 12 pto, Interlineado: 1,5 líneas

Con formato: Fuente: Negrita

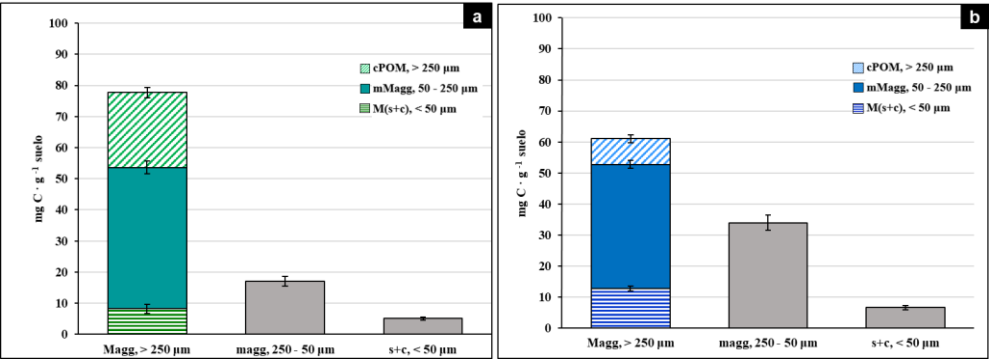


Figure 5. Distribution of organic C in stable aggregates and individual particles in soil under OPM (a) and CM (b) Magg: Macroaggregates; magg: microaggregates; mMagg: microaggregates within macroaggregates. s+c: silt+clay fraction; cPOM: coarse particulate organic matter >250 µm and sand particles. The error bars represent the standard error, which is the standard deviation divided by the square root of the sample size. All aggregate fractions are significantly different ($p < 0.05$) between OPM and CM, with the exception of s+c and mMagg.