



1 **The emergence of the tropical rainforest biome in the Cretaceous**

2

3 **Clément Coiffard<sup>1\*</sup>, Haytham El Atfy<sup>2,3</sup>, Johan Renaudie<sup>4</sup>, Robert Bussert<sup>5</sup>, and Dieter**

4 **Uhl<sup>6</sup>**

5

6 <sup>1</sup> Structural and Functional Plant Diversity Group, Institute of Biology, Freie Universität

7 Berlin, Altensteinstraße 6, 14195 Berlin, Germany.

8 <sup>2</sup> Department of Geosciences, University of Tübingen, 72076 Tübingen, Germany.

9 <sup>3</sup> Geology Department, Faculty of Science, Mansoura University, 35516 Mansoura, Egypt.

10 <sup>4</sup> Museum für Naturkunde, Leibniz-Institut für Evolutions- und Biodiversitätsforschung,

11 Invalidenstraße 43, 10115 Berlin, Germany.

12 <sup>5</sup> Institute of Applied Geosciences, Technische Universität Berlin, 10587 Berlin, Germany.

13 <sup>6</sup> Senckenberg Research Institute and Natural History Museum Frankfurt, 60325 Frankfurt

14 a.M., Germany.

15 **Correspondence:** Haytham El Atfy (el-atfy@daad-alumni.de)

16



1 **Abstract.** Modern tropical rain forests (TRF) are one of the most ecologically important and species-rich biomes on  
the planet. However, the origin of modern TRF is still debated,  
3 especially due to the incongruence between the fossil record and molecular data. Here, we are  
4 testing whether Campanian assemblages from north-eastern Africa could represent fossil TRF vegetation<sup>e</sup>. In so  
doing, we compare the investigated assemblages with others  
6 known to represent temperate forests, subtropical forests, and TRF in terms of leaf  
7 physiognomy, species richness, and taxonomic composition. We assume that modern-looking TRF already existed about  
80 Ma ago during the Campanian in north-eastern Africa based on fossil leaves in an area corresponding to 10% of the  
modern Amazonian or 25% of the

10 Congolese TRF. The apparent conflict between the fossil record and phylogenetic evidence is  
due to the more or less absence of published tropical floras for the Cretaceous.

12

13 **Keywords.** tropical rainforests; Cretaceous; Campanian; Africa; Egypt; Sudan

14

15 **Teaser.** Eighty Ma old fossil leaf assemblages suggest a widespread distribution of tropical  
16 rainforests in north-eastern Africa.

17



## 1 Introduction

Modern tropical rain forests (TRF) are one of the most ecologically important and species-rich biomes on the planet. Rainforest environments have an enormous impact on global water and heat circulation and therefore play a major role in water distribution and rainfall patterns. These forests are characterized by a stratified closed canopy, the presence of woody angiosperms at least in the understory, abundant rainfall, and equable temperatures. The origin of modern TRF is still debated (Eiserhardt et al., 2017). Studies based on modern plants suggest that the earliest appearance of the TRF dated back to the Cenomanian (93.9-100.5 Ma). In contrast, fossil TRF, characterized by their (leaf) physiognomy, climate proxies, and high diversity, have not been identified so far before the Maastrichtian (66.0-72. Ma) (Carvalho et al., 2021). An alternative scenario implies an earlier origin of TRF at mid-latitudes (Morley, 2000; Davis et al., 2005). However, mid-latitude floras from the Dakota Formation (ca. 100 Ma) (Upchurch and Wolfe, 1987) and the Olmos Formation (ca. 72-14 Ma) (Estrada-Ruiz et al., 2008) correspond

to a paratropical/subtropical climate.

The early development of TRF has been hampered by the fact that most of the information originated from mid to high-latitude fossil sites reflecting more temperate climates, while low-latitude sites have hardly been studied. Nevertheless, material including Campanian fossil plants from Egypt and the Sudan have been collected by the 'Sonderforschungsbereich 69' (a collaborative research centre located in Berlin funded by the (DFG) in the 70s to 90s (Figure 1). The studied assemblages have been preliminarily studied by Klitzsch and Lejal-Nicol (1984), Lejal-Nicol (1987) and Kahlert et al. (2009). Nonetheless, these contributions focused only on a few selected taxa and did not attempt to estimate the palaeoclimate or the palaeodiversity. The studied collection, from Baris Oasis in Egypt, comes from the Quseir Formation (Fm.) of early to middle Campanian age (ca. 84-76 Ma).



1 (Mahmoud, 2003). In addition, other seven smaller assemblages from lateral and temporal  
 2 equivalents of the Quseir Fm. were also studied. To test whether these assemblages  
 3 correspond to a fossil TRF vegetation, or at least a habitat suitable for stem lineages of  
 4 modern TRF taxa, we compared them with contemporary and younger assemblages known to  
 5 represent temperate forests, subtropical forests, and TRF considering three aspects.  
 6 (1) Leaf physiognomy dominated by entire margined taxa, reflecting mean annual  
 7 temperature  $>24^{\circ}\text{C}$  and mesophyllous or larger leaves, implying rainfall  $>1500\text{mm}$   
 8 corresponding to the limit of TRF in Africa (White, 1983).  
 9 (2) a high species richness, comparable to modern assemblages (Wing et al., 2009).  
 10 (3) a taxonomic composition similar to modern TRF (Wing et al., 2009).

## 11 1.1 Palaeoclimate background during the Campanian of NE 12 Africa 13 1.1.1 Sedimentological evidence

14 In Southern Egypt and Northern Sudan, the shallow marine Campanian sediments are rich in kaolinite and  
 partly contain phosphorites (Schwarz and Germann, 1999). However, equivalent

continental facies comprised stacked palaeosols consisting of quartz, kaolinite, iron hydroxides, and oxides.  
 eroded

These paleosols are interpreted as laterites formed in situ or eroded and redeposited (Schwarz and Germann, 1999).  
 The dominance of kaolinite in the clay mineral fraction in the sediments indicates a perennial warm and humid  
 tropical palaeoclimate that promoted the hydrolysis of aluminosilicate minerals (Chamley, 1989; Thiry, 2000).

18

19

21 Phosphorite formation was also ascribed to intense chemical weathering on  
 the African continent due to a humid tropical palaeoclimate and the fluvial transport of the  
 weathering solutions into the shallow marine environment (Schwarz and Germann, 1999).

Laterites are typically formed by intense tropical or subtropical weathering, but preferably in a  
 warm climate with pronounced dry seasons (Widdowson, 2007).

19

21



1 Laterites on the otherhand, are typically formed by intense tropical or subtropical weathering in  
 2  
 3  
 4 1.1.2 Palaeobotanical evidence  
 5 Records of gymnospermous charcoal, despite rare, in sediments of the Quseir Fm. indicate the  
 6 presence of wildfires during the Campanian in the surroundings of Baris (El Atfy et al., 2016). Although the  
 7 occurrence of wildfires is often used as an indication of somewhat drier  
 8 conditions, it is not clear whether such conditions might have occurred seasonally or just  
 9 during an occasional dry spell (El Atfy et al., 2016). Even in modern rainforests such  
 10 occasional dry spells can promote the ignition and spread of wildfires (Scott et al., 2013).  
 11 Under conditions of higher than present oxygen concentrations in the atmosphere, which were  
 12 reconstructed by a number of models for the Cretaceous (Brown et al., 2012), it is even more  
 13 likely that also within ever-wet TRF wildfires could be ignited and spread easily (Belcher et  
 14 al., 2010).  
 15 Palynological data from the Quseir Fm. also point to a flora dominated by angiosperms,  
 16 although pteridophytes and gymnosperms are present, but not diverse (Mahmoud, 2003).  
 17 Based on the composition and diversity of the palynoflora, as well as data from palynofacies  
 18 analysis, Mahmoud (op. cit.) interpreted the source habitats of the recovered palynomorphs as  
 19 a fluvio-lacustrine landscape with abundant moist and aquatic habitats as well as  
 20 subordnately drier habitats (i.e., with *Araucaria*, ephedroids and other gymnosperms) in the  
 21 hinterland, in which the plants are grown under a warm and humid, tropical to subtropical,  
 22 palaeoclimate.  
 23  
 24



## 1 2 Geological and collecting information

2 The studied materials comprise fossil leaves collected by members of the  
 3 ‘Sonderforschungsbereich 69’ in 1984 and 1987 that are housed now at the Natural History Museum of  
 Berlin. They comprised collection B (Baris) which encompasses the material  
 5 described here that was gathered east of Baris (24°33’N, 30°43’E) in southern Egypt from the Quseir  
 Fm. which was dated as early to middle Campanian age (Mahmoud, 2003). In  
 7 addition, seven additional assemblages were also studied, among them, four assemblages  
 8 come from Egypt and three from the Bir Kiseiba area (pf12-81, pf3/82 and pf13/82) (Klitzsch and Lejal-  
 Nicol, 1984; Lejal-Nicol, 1987) that were collected from the Kiseiba Fm., an

10 equivalent to the Quseir Fm. (Klitzsch and Hermina, 1989) and only one from the Qena area  
 (Schrunk, 1992), also from the Quseir Fm. Moreover, four assemblages come from the Sudan, one from the  
 Jebel Abyad Plateau (pf82/23S) (Lejal-Nicol, 1987; Barazi, 1985) and three from the Bir Atrun-Nukheila  
 area (pf8-84, pf9/84, pf10/84) (Lejal-Nicol, 1987; Barazi, 1985; Klitzsch and Wycisk, 1987) from the  
 Kabbabish Fm. and its equivalents (Barazi, 1985).

15 A lower age boundary of the studied assemblage can be delimited by a regional hiatus associated with  
 16 a major unconformity between the Santonian and the  
 17 Campanian which has been dated palynologically (Wycisk, 1994)  
 18 An upper age boundary has been dated in Egypt, based on the age of transgression which covered  
 19 the whole area in Egypt, as late Campanian, which has been confirmed palynologically (El Beialy, 1995  
 20 and macropalaeontologically (ammonites, Dominik and Schaal, 1984).  
 21 In addition to mega plant fossils, the ecosystem in the Quseir Fm. is characterized by the  
 presence of fragmented bones and other vertebrate remains of lungfishes, sawfishes, turtles, crocodiles as  
 well as dinosaurs (Abu El-Kheir, 2020).



### 1 3 Methods

#### 2 3.1 Climate proxies and diversity analyses

3 For the diversity analyses and climate proxies, the leaves were grouped into morphotypes  
4 without considering formerly proposed taxa (the literature survey was done afterwards). Each morphotype  
differs from others by at least one of the criteria described in the manual of leaf architecture (Ellis et al., 2009).  
Although the biggest leaves are often fragmentary, all  
7 broken slabs are still recognized, e.g. by their tertiary venation (e.g., M-17 has horizontal  
8 tertiaries while in M-16 they are clearly obtuse to the mid-vein), or their shape (e.g., M-18 and M19 are very  
coriaceous, but differ in the base shape, which is corded and rounded

10 respectively). Considering the high proportion of simple, entire margined leaves, the most 11 important  
distinguishing characters are found in the higher order of venation.

12 Climate data were estimated using two kinds of climate proxies, the first is simple linear  
13 regressions between a physiognomic and a climate parameter, and the second is an artificial neural  
network approach, based on 31 leaf characters and giving, palaeoclimate variables (CLANN). Each morphotype  
was evaluated for the physiognomic characters used (see

16 Supplementary material).

17 We used the simple linear regressions between a physiognomic and a climate parameter, following  
Miller et al. (2006) and Kowalski and Dilcher (2003) to calculate temperature estimates, based on leaf margin  
analyses. For the rainfall estimates based on leaf size, we

20 employed the regression by Wilf et al. (1998).

21 Climate proxies were also checked using the CLANN method (i.e. an artificial neural network approach  
CLAMP) (Li et al., 2016) calibrated using the CLAMP global data set

23 considering 378 sites worldwide (Spicer et al., 2009). As in Li et al. (2016), the spread for each climatic  
variable was calculated using a 10-fold cross-validation, repeated 1000 times.



1 The scoresheet for the Baris flora is given in the supplementary material (Supplementary  
2 material; Data S1) as well as the code used.  
3 The rarefied diversity was estimated for individual localities (single collection point) and for the bulk  
4 floras. Concerning possible collection biases, it is worth noting that the material was collected very carefully  
5 by sedimentologists who collected almost everything, including tiny unidentifiable plant fragments which  
6 abound in the collection. To test whether our

7 assemblages are more similar to TRFs than to other kinds of vegetation, we compared the  
8 diversity of fossil samples from NE Africa with tropical and warm temperate associations  
9 from the Cretaceous, Paleocene and Eocene. The data from Cerrejon, Castle Rock, Bison  
10 basin, Rio Negro, Barro Colorado were taken from Wing et al. (2009) and compiled with data  
11 from Hunco (Wilf et al., 2005) and Grünbach (Herman and Kvaček, 2010). The data from  
12 Grünbach are based on the number of specimens of each taxon mentioned as material given  
13 (see Supplementary material). Only the bulk flora diversity could be estimated for Grünbach  
14 due to the absence of data concerning individual collection points. The rarefaction curves  
15 were done using PAST (Krebs, 1989; Hammer et al., 2001).

16

## 17 **4 Results**

### 18 **4.1 Morphotypes**

19 Previous works focused on the investigated material (Klitzsch and Lejal-Nicol, 1984; Lejal-  
20 Nicol, 1987; Kahlert et al., 2009) recorded only 37 taxa while our current revision based on 361  
21 specimens, resulted in the identification of 70 morphotypes: 54 non-monocotyledon  
22 angiosperms, 11 monocotyledons, 4 ferns, and a single conifer (Figure 2). The presence of some  
23 morphotypes occurring in several assemblages (Supplementary material; Table S1),





1 especially monocotyledons, suggests homogeneous vegetation for the whole area and supports  
 2 their contemporaneity.

3

#### 4 4.2 Climate

5 The physiognomy of the Baris assemblage is similar to that of a modern TRF. Of the 20  
 6 terrestrial non-monocotyledonous angiosperms with preserved margin, 85% are entire-  
 7 margined, yielding estimates of mean annual temperature (MAT) ranging from 26°C to 33°C  
 8 corresponding to a tropical climate (Wolfe, 1979). Whereas, the average leaf size of the 23  
 9 terrestrial non-monocotyledonous angiosperms is 69 cm<sup>2</sup> (Wing et al., 2009), yielding  
 10 estimates of the mean annual precipitation (MAP) of 2609 mm which is alike to >1500 mm  
 11 precipitation found in the Guineo-Congolian evergreen rainforests (White, 1983). The  
 12 CLANN analysis results in slightly lower temperatures (24°C) and precipitation (1795 mm).  
 13 The CLANN analysis also advocates an equable climate with an annual amplitude of about  
 14 6°C (warm month mean temperature; WMMT): 27°C, cold month mean temperature; CMMT:  
 15 21°C. This is reflected by the continuous growing season (12 months). Nevertheless, the  
 16 precipitation of the three wettest months (Three-Wet: 911 mm/ 304 mm per month) is about  
 17 twice the mean monthly precipitation (MMGSP: 150 mm) while the three driest months (131  
 18 mm/ 44 mm per month) indicate a dry season (month with less than 50 mm). This suggests a  
 19 strong seasonality with a short dry season. Nevertheless, such seasonality is comparable to the  
 20 Guinean part of the Guineo-Congolian TRF (White, 1983).

21

#### 22 4.3 Diversity

23 Despite the low number of specimens, the diversity of the Baris flora rarefied at 100  
 24 specimens and appear comparable to the richest floras of the Paleogene and modern TRF as



1 well as subtropical assemblages and richer and more diverse than the Paleocene temperate  
2 assemblages (Table 1). Moreover, the assemblages also rarefied at 20 specimens, in order to  
3 include most assemblages, the same applies to the remaining assemblages of NE Africa. The  
4 total diversity of the Campanian of NE Africa displays the same pattern (Figure 3).

5

#### 6 4.4 Taxonomic composition

7 In terms of composition (Table 1), the Campanian African assemblages are characterized by  
8 the dominance of angiosperms accounting for 94% of the flora. Among the mid-latitude  
9 floras, the Campanian Grünbach flora has only 68% angiosperms and only Paleogene  
10 assemblages exhibit more than 85% angiosperms (e.g. Castle Rock). Even among the  
11 angiosperm-dominated assemblages (i.e. >85% angiosperms), only the tropical assemblages  
12 of Guaduas, Cerrejon, and Africa are rich in monocots (11%, 20%, and 17% respectively)  
13 while other assemblages, although extremely rich, display no more than 2% monocots (i.e.  
14 Hunco and Castle Rock). The high dominance of dicots and monocots and the near exclusion  
15 of other plant groups seem to be typical for both ancient and modern TRFs.

16 Furthermore, a closer comparison with the contemporaneous subtropical Grünbach flora, the  
17 Maastrichtian Guaduas flora, and the Paleocene Cerrejon TRF support a close affinity of the  
18 NE African vegetation with younger TRF.

19 A thorough comparison with Grünbach based on Herman and Kvaček (2010) reveals the  
20 complete absence of taxa common to both assemblages. Of particular importance is the  
21 absence of platanoid taxa in NE Africa although they are very common in northern mid-  
22 latitudes floras. Among monocots, Araceae do occur, but they are represented by  
23 Orontioideae, a subfamily that is currently restricted to the northern subtropical to the  
24 temperate area (Mayo et al., 1997).



1 Compared to the Guadas assemblage (Carvalho et al., 2021), the Baris assemblage displays a  
 2 piperalean morphotype (M15) quite similar to *Piper margaritae* (GD05) as well as a fern  
 3 (M36) similar to GD103. However, the monocots of Guadas seem to be dominated by  
 4 Zingiberales and palms, the latter apparently lacking in NE Africa. Only two morphotypes  
 5 could have araceous affinities but none of them is similar to the Araceae of NE Africa.  
 6 However, palynological evidence from the Maastrichtian of Somalia introduced the exclusive  
 7 occurrence of palms (Schrank, 1994).  
 8 In contrast to Guadas, the monocot assemblage of Cerrejon based on Wing et al. (2009) is  
 9 quite similar to Baris, displaying Zingiberales (especially CJ49) similar to M-32, but also  
 10 colocasioid Araceae similar to *Afrocasia* (M-31) (Coiffard and Mohr, 2016) (*Montrichardia*,  
 11 CJ3), a probable *Cobbania* (M-29) (Coiffard and Mohr, 2018) (CJ59) and an Araceae similar  
 12 to *Lejalina* (M-30) (Coiffard and Mohr, 2015) (CJ47). In addition to similarities with Cerrejon,  
 13 the terrestrial Araceae show affinities with modern TRF taxa. Furthermore, *Afrocasia* is an  
 14 Aroideae with huge leaves that displays close affinity with taxa usually found in tropical  
 15 rainforests but also in warm temperate forests. More important is *Lejalina*, which is closely  
 16 related to *Homalomena* and *Philodendron*, both taxa and their relatives being restricted to  
 17 tropical rainforests. Furthermore, Aroideae growing in seasonal (monsoonal) tropical  
 18 vegetation have compound leaves, such as *Amorphophallus*. The dicots morphotypes CJ5  
 19 (Lauraceae) and CJ48 (Salicaceae) are similar to M-03 and M-04 respectively. M-03 and CJ5  
 20 share the presence of one pair of acute basal secondaries, simple brochidodromous  
 21 secondaries and simple agrophic veins. Also, M-04 and CJ-48 share the same basal  
 22 actinodromous venation, well-developed simple agrophic veins, and a toothed margin. The  
 23 teeth of M-04 also display spherulate apices.



1 The Campanian floral assemblages from NE Africa are thus more similar, in terms of  
2 physiognomy, species richness, and taxonomic composition, to younger tropical assemblages  
3 than to contemporary and younger temperate and subtropical forests.

4

## 5 **5 Discussion**

6 The leaf physiognomy of the Campanian NE African leaf assemblages is consistent with a wet  
tropical climate comparable to that occurring in modern African TRF. Wet tropics during the late  
Cretaceous agree with increased precipitation during the Late Cretaceous (Chaboureau et al.,  
2014) and suggest that a seasonal overlap of the ITCZ existed at least during the Campanian

10 (Spicer et al., 2013).

11 The composition of the Campanian NE African floras displays a set of aroids that belong to  
typical TRF clades (Nauheimer et al., 2012) and thus support the idea that Late Cretaceous tropics  
already housed such lineages under conditions similar to their modern  
14 habitat. This reconciles the apparent conflict between the fossil record and phylogenetic  
15 evidence (Eiserhardt et al., 2017). Such conflict was due to the near absence of published  
tropical floras for the Cretaceous, with the notable exception of the Crato flora (Mohr and Friis, 2000),  
and some preliminary reports from NE Africa (Kahlert et al., 2009) as well as the recent record from the  
Maastrichtian of Guaduas (Carvalho et al., 2021).

19 The Barremian-Aptian Crato flora in NE-Brazil is supposed to have grown in a rather  
20 (seasonally) dry climate and is dominated by gymnosperms (Mohr et al., 2006). The  
21 angiosperms component of this vegetation differs strongly from younger vegetation,  
22 consisting of Magnoliids and early diverging eudicots and monocots (Coiffard et al., 2019). If  
23 the Crato flora is representative of the tropical vegetation during the late Early Cretaceous,  
24 this implies that modern-looking TRF must have developed during the 120-80 Ma time



1 interval. Unfortunately, except for the Turonian floras of the Negev desert (Krassilov, 2005), fossil flora from  
this time interval are **insufficient** despite that new collections are planned in Egypt and **the** Sudan. The Turonian  
flora of the Negev desert (Krassilov, 2005) apparently grew further away from the palaeoequator. **It seems to have**  
**a drier climate and a rather low** diversity (19 leaf morphotypes) and strong affinities to Laurasia.

6 To sum up, the present results show that TRF occurred in NE Africa during the Campanian in an area  
expanding between 19°N and 26°N and between 26°E and 33°E, covering at least

8 550,000 km<sup>2</sup> which corresponds to 10% of the Amazonian or 25% of the Congolese TRF.

9

## 10 **6 Conclusions**

11 A detailed investigation based on leaf physiognomy, species richness, and taxonomic  
12 composition was carried out on fossil leaf collection, recovered from the Baris Oasis, Egypt. The  
results obtained infer a wet tropical climate, comparable to that occurring in modern African TRF. In  
terms of vegetation composition, the Campanian NE African floras display a set of 15 aroids that  
belong to typical TRF clades and thus support the idea that Late Cretaceous tropics already housed  
such lineages under conditions similar to their modern habitat.

17

18

19

20

21



22

23




24




## 1    **References**

- 2    Abu El-Kheir, G. A. Taphonomic conditions and assessment of the Late Cretaceous  
3        vertebrates bearing sites in the Western Desert, Egypt. *Egyptian Journal of Geology*,  
4        64, 471–484, 2020.
- 5    Amante, C. & Eakins, B., 2009, ETOPO1 Global Relief Model Converted to PanMap Layer  
6        Format (NOAA-National Geophysical Data Center).
- 7    Barazi, N. Sedimentologie und Stratigraphie des Abyad-Beckens (NW Sudan). *Berl. Geowiss.*  
8        Abh., Reihe A, 64, 1–86, 1985.
- 9    Belcher, C. M., Yearsley, J. M., Hadden, R. M., McElwain, J. C., and Rein, G. Baseline  
10        intrinsic flammability of Earth's ecosystems estimated from paleoatmospheric oxygen  
11        over the past 350 million years. *PNAS*, 107(52), 22448–22453, 2010.
- 12   Brown, S. A., Scott, A. C., Glasspool, I. J., and Collinson, M. E. Cretaceous wildfires and  
13        their impact on the Earth system. *Cret. Res.*, 36, 162–190, 2012. 
- 14   Carvalho, M. R., Jaramillo, C., de la Parra, F., Caballero-Rodríguez, D., Herrera, F., Wing, S.,  
15        Turner, B. L., D'Apolito, C., Romero-Báez, M., Narváez, P., Martínez, C., Gutierrez,  
16        M., Labandeira, C., Bayona, G., Rueda, M., Paez-Reyes, M., Cárdenas, D., Duque, A.,  
17        Crowley, L. J., Santos, S., and Silvestro, D. Extinction at the end-Cretaceous and the  
18        origin of modern Neotropical rainforests. *Science*, 372, 63–68, 2021.
- 19   Chaboureaud, A.-C., Sepulchre, P., Donnadieu, Y., Franc, A. Tectonic-driven climate change  
20        and the diversification of angiosperms. *PNAS* 111(39): 14066–14070, 2014.
- 21   Chamley, H. *Clay Sedimentology*. Springer Berlin Heidelberg, 1989.
- 22   Coiffard, C., Kardjilov, N., Manke, I., and Bernardes-de Oliveira, M. E. Fossil evidence of core  
23        monocots in the Early Cretaceous. *Nat. Plants*, 5(7), 691–696, 2019. 




- 1 Coiffard, C., and Mohr, B. A. R. *Afrocasia kahlertiana* gen. et sp. nov., a new tropical  
2 member of Araceae from Late Cretaceous strata of northern Gondwana (Baris, Egypt).  
3 Taxon, 65(6), 1374–1384, 2016.
- 4 Coiffard, C., and Mohr, B. A. R. Cretaceous tropical Alismatales in Africa: diversity, climate  
5 and evolution. Bot. J. Linn. Soc., 188(2), 117–131, 2018.
- 6 Coiffard, C., and Mohr, B. A. R. *Lejalia sagenopteroides* gen. nov. et comb. nov.: A new  
7 tropical member of Araceae from Late Cretaceous strata of northern Gondwana (Jebel  
8 Abyad, Sudan). Taxon, 64(5), 987–997, 2015.
- 9 Davis, C. C., Webb, C. O., Wurdack, K. J., Jaramillo, C. A., and Donoghue, M. J. Explosive  
10 radiation of Malpighiales supports a Mid-Cretaceous origin of modern tropical rain  
11 forests. Am. Nat., 165(3), E36–E65, 2005. 
- 12 Dominik, W., and Schaal, S. Anmerkungen zur Stratigraphie der Phosphate der Ober-Kreide  
13 (Campan) der westlichen Wüste, Ägypten. Berl. Geowiss. Abh., Reihe A, 50, 153–  
14 175, 1984. 
- 15 Eiserhardt, W. L. Couvreur, T. L. P., and Baker, W. J. Plant phylogeny as a window on the  
16 evolution of hyperdiversity in the tropical rainforest biome. New Phyt., 214(4), 1408–  
17 1422, 2017. 
- 18 El Atfy, H., Sallam, H., Jasper, A., and Uhl, D. The first evidence of paleo-wildfire from the  
19 Campanian (Late Cretaceous) of North Africa. Cret. Res., 57, 306–310, 2016.
- 20 El Beialy, S. Campanian-Maastrichtian palynomorphs from the Duwi (Phosphate) Formation  
21 of the Hamrawein and Umm El Hueitat mines, Red Sea Coast, Egypt. Rev. Palaeobot.  
22 Palynol., 85, 303–317, 1995.
- 23 Ellis, B., Daly, D., Hickey, L., Johnson, K., Mitchell, J., Wilf, P., and Wing, S., Manual of  
24 LeafArchitecture. Cornell University Press, 2009.



- 1 Estrada-Ruiz, E. Upchurch, G. R. Cevallos-Ferriz, S. R. Flora and climate of the Olmos
- 2 Formation (upper Campanian–lower Maastrichtian), Coahuila, Mexico: a preliminary
- 3 report. *Gulf Coast Ass. Geol. Soc.*, 58, 273–283, 2008.
- 4 Hammer, Ø. Harper, D. A. Ryan P. D., PAST. Paleontological statistics software package for
- 5 education and data analysis. *Pal. electron.*, 4(1), 1–9, 2001.
- 6 Herman, A. B., and Kvaček, J. Late Cretaceous Grünbach Flora of Austria. *Naturhistorisches*
- 7 *Museum*, 2010 
- 8 Wolfe, J. Temperature parameters of humid to mesic forests of eastern Asia and relation to
- 9 forests of other regions of the northern hemisphere and *Australasia*. *U.S. Geol. Surv.*
- 10 *Prof. Pap.*, 1106, 1979.
- 11 Kahlert, E. Ruffle, L., and Gregor, H. Die Oberkreide-Flora (Campanian) von Baris (Ägypten)
- 12 und ihre ökologisch-geographischen Beziehungen unter plattentektonischen Aspekten.
- 13 *Documenta naturae*, 178, 2009.
- 14 Klitzsch, E., and Hermina, M. The Mesozoic. In: Hermina, M., Klitzsch, E., and List, F.
- 15 (Eds), *Stratigraphic lexicon and explanatory notes to the geologic map of Egypt*
- 16 1:500,000. Conoco Incorporation, 77–139, 1989.
- 17 Klitzsch, E., and Lejal-Nicol, A. Flora and fauna from strata in southern Egypt and northern
- 18 Sudan. *Berl. Geowiss. Abh.*, Reihe A, 50, 47–79, 1984.
- 19 Klitzsch, E., and Wycisk, P. Geology of the sedimentary basins of northern Sudan and
- 20 bordering areas. *Berl. Geowiss. Abh.*, Reihe A, 75, 97–136, 1987.
- 21 Kowalski, E. A., and Dilcher, D. L. Warmer paleotemperatures for terrestrial ecosystems.
- 22 *PNAS*, 100(1), 167–170, 2003.
- 23 Krassilov, V. Late Cretaceous (Turonian) Flora of Southern Negev, Israel. Pensoft Publishers,
- 24 Moscow, Russia, 2005.






- 1 Krebs, C. Ecological Methodology. Harper & Row, New York, 1989.
- 2 Lejal-Nicol, A. Flores nouvelles du Paleozoique et du Mesozoique d’Egypte et du Soudan  
3 septentrional. *Berl. Geowiss. Abh.*, Reihe A, 75, 151–248, 1987.
- 4 Li, S.-F. Jacques, F. M. B., Spicer, R. A., Su, T., Spicer, T. E. V., Yang, J., and Zhou, Z.-K.  
5 Artificial neural networks reveal a high-resolution climatic signal in leaf  
6 physiognomy. *Palaeogeogr. Palaeoclim. Palaeoecol.*, 442, 1–11, 2016.
- 7 Mahmoud, M. S. Palynology and palaeoenvironment of the Quseir Formation (Campanian)  
8 from central Egypt. *J. African Earth Sci.*, 36(3), 135–148, 2003.
- 9 Mayo, S. Bogner, J., and Boyce, P. The Genera of Araceae (Continental Printing, Belgium),  
10 1997. 
- 11 Miller, I. M., Brandon, M. T., and Hickey, L. J. Using leaf margin analysis to estimate the  
12 mid-Cretaceous (Albian) paleolatitude of the Baja BC block. *Earth Planet. Sci. Lett.*,  
13 245(1), 95–114, 2006.
- 14 Mohr, B. A. R., and Friis, E. M. Early angiosperms from the Lower Cretaceous Crato  
15 Formation (Brazil), a Preliminary Report. *Int. J. Plant Sci.*, 161(S6), S155–S167,  
16 2000.
- 17 Mohr, B. A. R., Bernardes-de Oliveira, M. E., Barale, G., and Ouaja, M. Palaeogeographic  
18 distribution and ecology of *Klitzschophyllites*, an Early Cretaceous angiosperm in  
19 southern Laurasia and northern Gondwana. *Cret. Res.*, 27(3), 464–472, 2006.
- 20 Morley, R. J. Origin and evolution of tropical rain forests. Wiley, 2000.
- 21 Nauheimer, LarsL., Dirk Metzler, D., and Susanne S. and Renner, S. S. Global history of the  
22 ancient monocot family Araceae inferred with models accounting for past continental  
23 positions and previous ranges based on fossils. *New Phyt.* 195: 938–950, 2012.



- 1 Schrank, E. Palynology of the Yesomma Formation in northern Somalia: a study of pollen,  
2 spores and associated phytoplankton from the Late Cretaceous Palmae Province.  
3 *Palaeontogr. B*, 231, 63–112, 1994.
- 4 Schrank, E. Nonmarine Cretaceous correlations in Egypt and northern Sudan: palynological  
5 and palaeobotanical evidence. *Cret. Res.*, 13(4), 351–368, 1992.
- 6 Schwarz, T., and Germann, K. Weathering Surfaces, Laterite-Derived Sediments and  
7 Associated Mineral Deposits in North-East Africa. Wiley, 1999.
- 8 Scott, A. C., Bowman, D. M., Bond, W. J., Pyne, S. J., and Alexander, M. E. Fire on earth: an  
9 introduction. Wiley, 2013.
- 10 Spicer, R. A., Herman, A. B., Yang, J., and Spicer, T. E. Why future climate change is likely to  
11 be under-estimated: evidence from palaeobotany. *Journal of the Botanical Society of*  
12 *Bengal*, 67, 75–88, 2013.
- 13 Spicer, R. A., Valdes, P., Spicer, T. E. V., Craggs, H. J., Srivastava, G., Mehrotra, R. C., and  
14 Yang, J. New developments in CLAMP: Calibration using global gridded  
15 meteorological data. *Palaeogeogr. Palaeoclim. Palaeoecol.*, 283(1), 91–98, 2009.
- 16 Thiry, M. Palaeoclimatic interpretation of clay minerals in marine deposits: an outlook from  
17 the continental origin. *Earth-Sci. Rev.*, 49(1), 201–221, 2000.
- 18 Upchurch, G. R., and Wolfe, J. Mid-Cretaceous to Early Tertiary vegetation and climate:  
19 evidence from fossil leaves and woods. In: *The Origins of Angiosperms and their*  
20 *Biological Consequences*, E. M. Friis, Chaloner, W. G. and Crane, P. H. Eds  
21 (Cambridge University Press, Cambridge, UK), pp. 75–105, 1987.
- 22 Wessel, P. & Luis, J. F. The GMT/MATLAB Toolbox. *Geochemistry, Geophysics,*  
23 *Geosystems* 18, 811–823, 2017.
- 24 White, F. *The Vegetation of Africa*. Natural Resources Research UNESCO, 1983.



- 1 Widdowson, M. Laterite and Ferricrete. In: Geochemical sediments and landscapes, D. J.  
2 Nash, and McLaren, S. J. **Eds** Blackwell Publishing, Oxford, UK. pp. 45–94, 2007.
- 3 Wilf, P. Johnson, K. R., Cuneo, N. R., Smith, M. E., Singer, B. S., and Gandolfo, M. A.  
4 Eocene plant diversity at Laguna del Hunco and Río Pichileufú, Patagonia, Argentina.  
5 **Am. Nat.**, 165(6), 634–650, 2005.
- 6 Wilf, P. Wing, S. L., Greenwood, D. R., and Greenwood, C. L. Using fossil leaves as  
7 paleoprecipitation indicators: An Eocene example. *Geology*, 26(3), 203–206, 1998.
- 8 Wing, S. L., Herrera, F., Jaramillo, C. A., Gómez-Navarro, C., Wilf, P., and Labandeira, C. C.  
9 Late Paleocene fossils from the Cerrejón Formation, Colombia, are the earliest record  
10 of Neotropical rainforest. *PNAS*, 106(44), 18627–18632, 2009. 
- 11 Wycisk, P. Correlation of the major late Jurassic-early Tertiary low- and highstand cycles of  
12 southwest Egypt and north-west Sudan. *Geologische Rundschau*, 83, 759–772, 1994.
- 13  
14  
15  
16  
17  
18  
19  
20  
21  
22  
23  
24



1   **Data availability.** All data in this paper are available in the main text. Further data are  
2   available in the Supplement as follows.

3   Table S1: Morphotype catalogue of the NE African assemblages from the Campanian-  
4   Maastrichtian.

5   Table S2: Grünbach fossil collection.

6   Table S3: Results of the Climate Leaf Analysis with Neural Networks (CLANN).

7   Data S1: Original scoresheet filed for Baris and used for the CLANN.

8

9   **Author contributions.** CC contributed to the design and scope of the paper. JR provided the  
10   statistical and CLANN analysis. CC, HE, RB, and DU contributed to writing and revising the  
11   manuscript. CC and HE prepared the paper, with contributions from all co-authors.

12

13   **Competing interests.** The authors declare that they have no competing interests.

14

15   **Acknowledgements.** We would like to thank the institutions and researchers who made this  
publication possible.

17

18   **Financial support.** This work has been supported by the Deutsche Forschungsgemeinschaft  
19   (grant number CO1060/3-1 to CC) and the Alexander von Humboldt Foundation (grant  
20   number EGY-1190326-GF-P to HE).

21

22

23

24



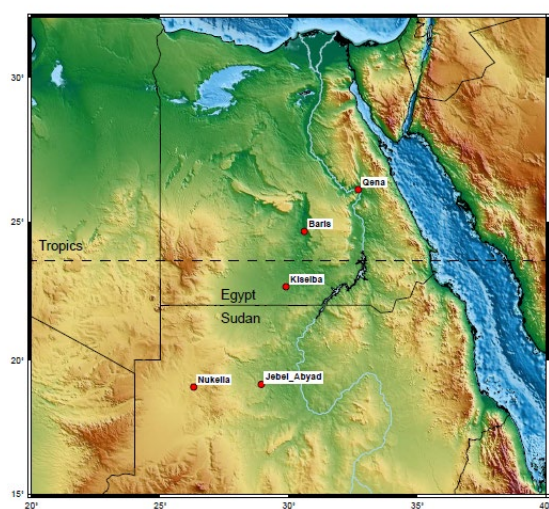
1 **Figures and Table captions:**

2 **Figure 1.** Location of the fossil assemblage used. The location map shows the studied areas.

3 The topographic map is created using generic mapping tools of Wessel and Luis (2017) and

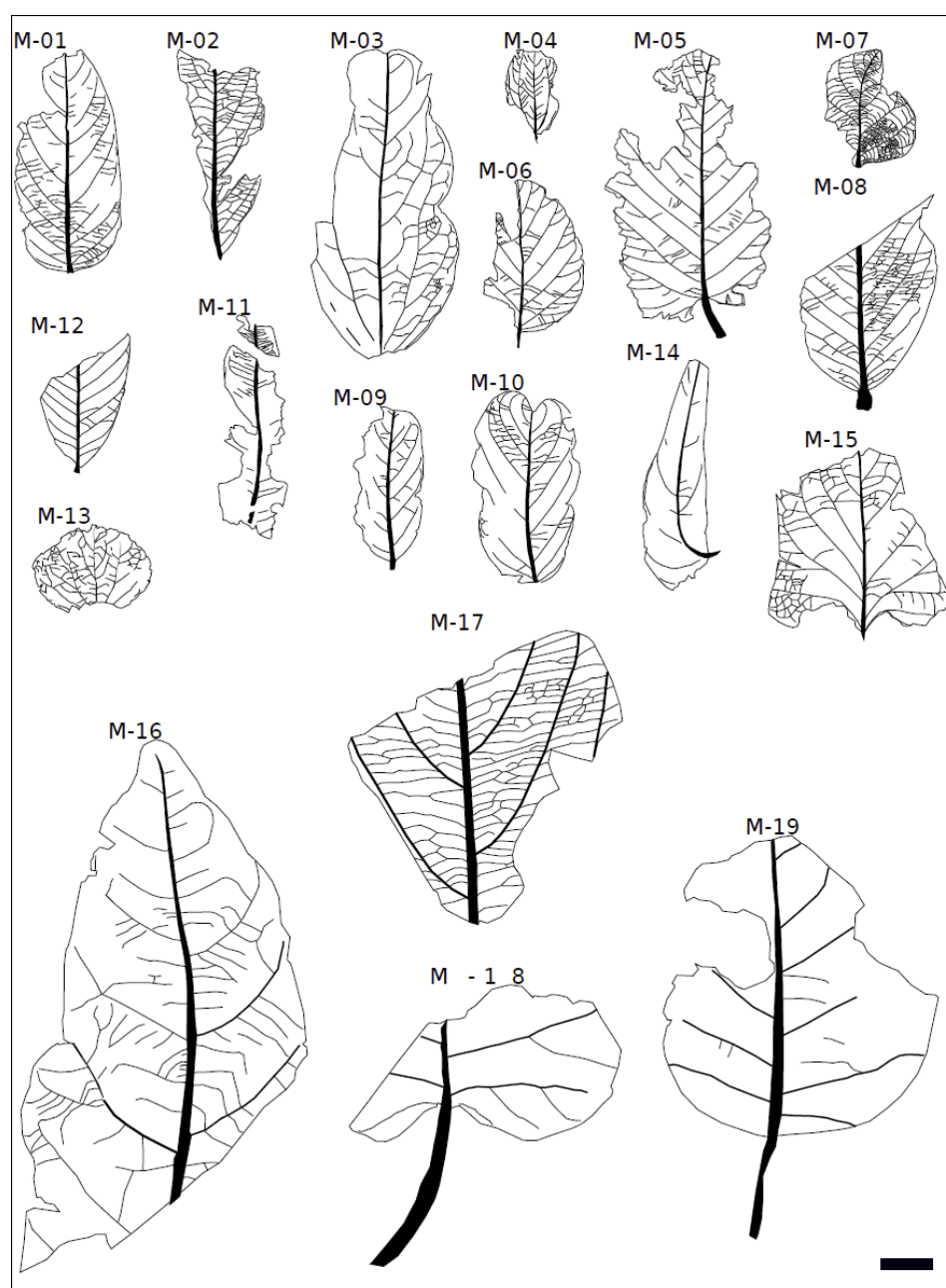
4 the topographic dataset ETOPO1 of Amante and Eakins (2009).

5





1 **Figure 2.** Line drawings of dicot leaf morphotypes, Baris, Egypt. The scale bar is 4 cm.

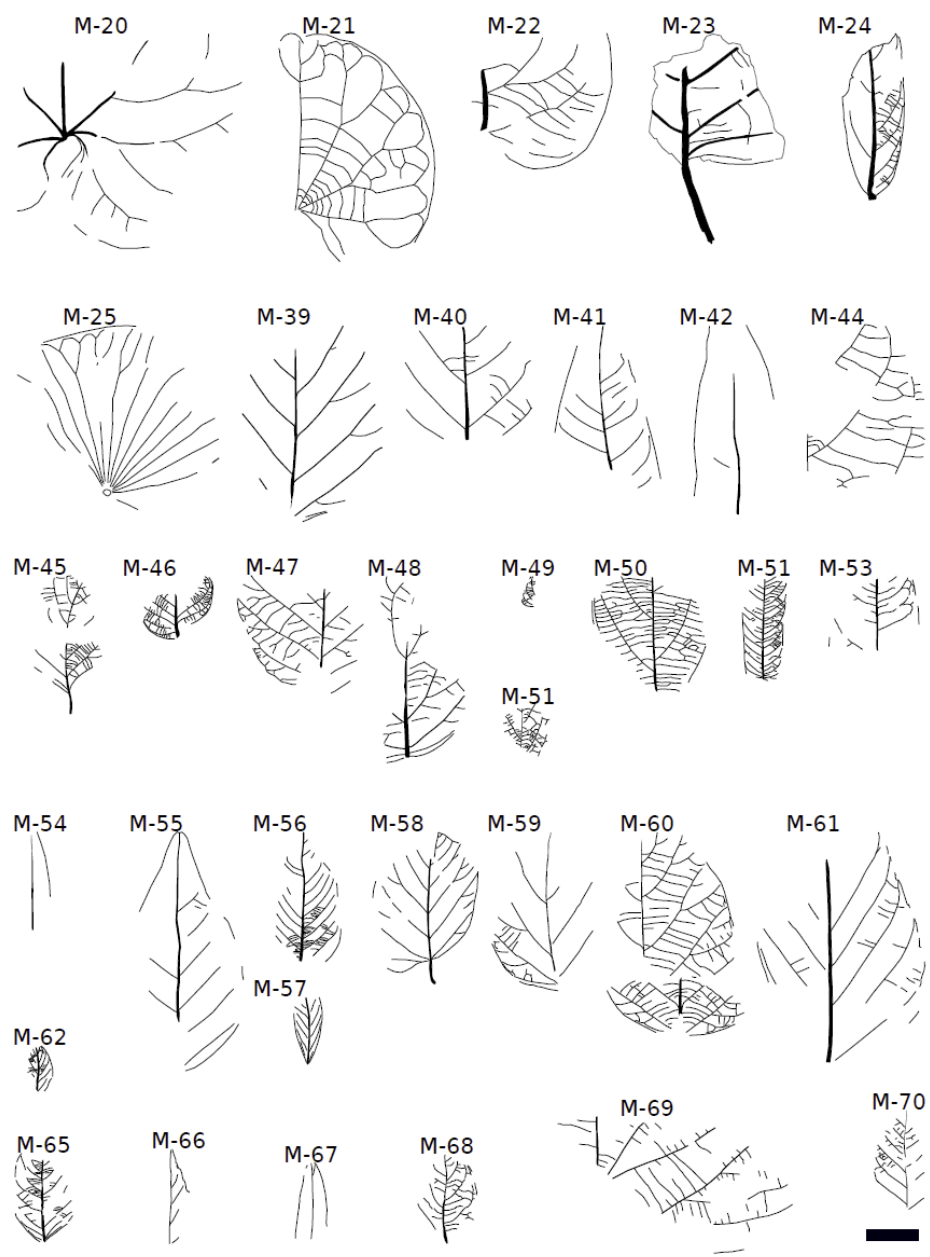


2

3




1 **Figure 3.** Line drawings of dicot leaf morphotypes, Baris, Egypt. The scale bar is 4 cm.

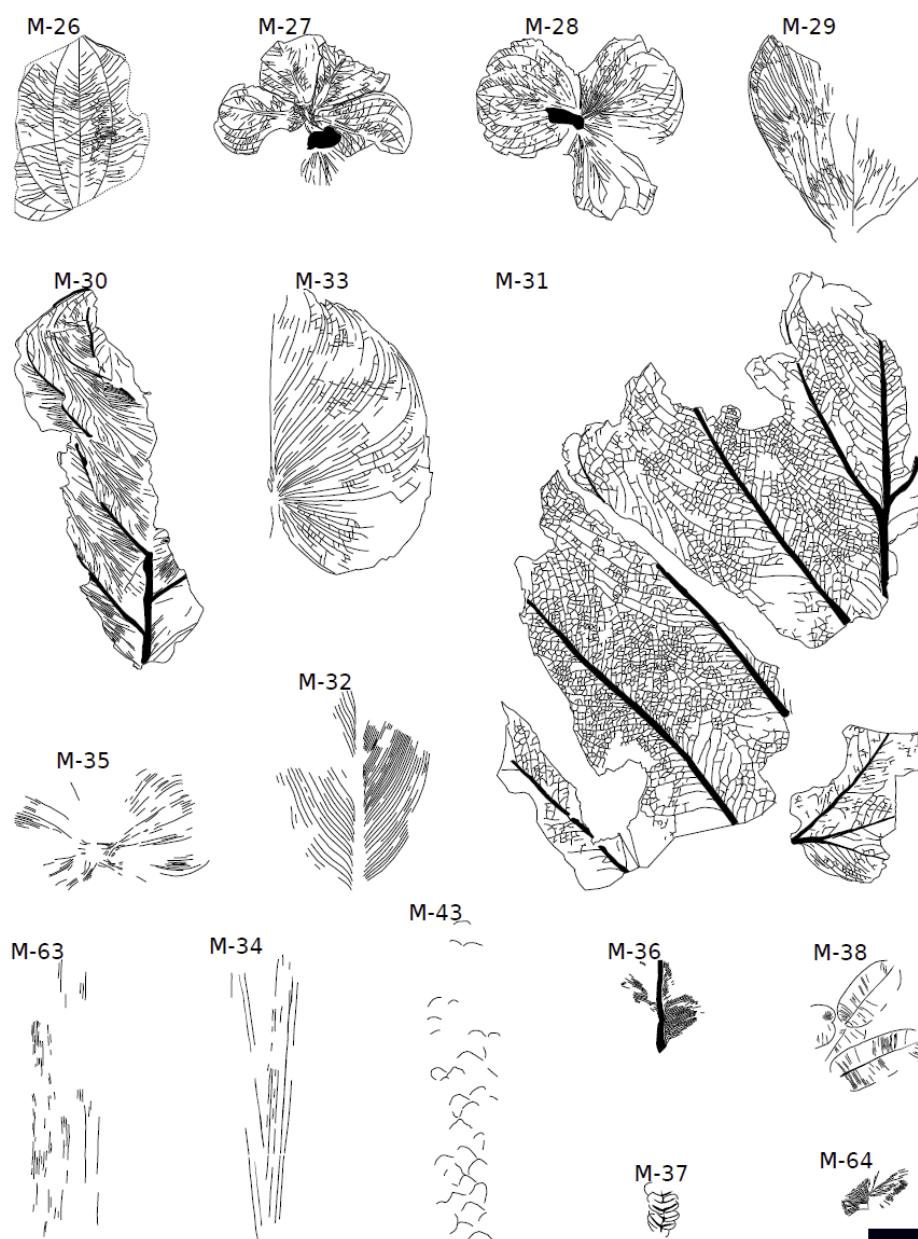


2

3



- 1 **Figure 4.** Line drawings of monocots, conifers (only M-43), and ferns (M-36, M-37, M-38,
- 2 M-64) morphotypes, Baris, Egypt. The scale bar is 4 cm. 

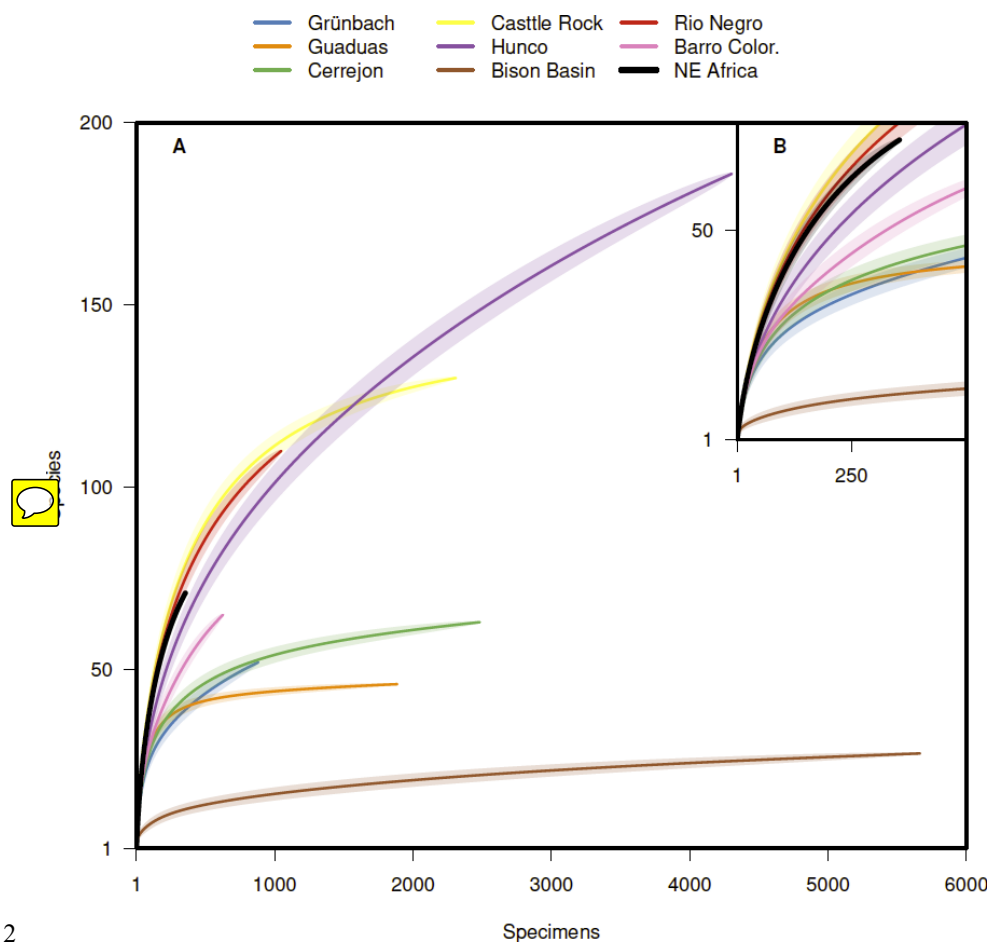


3





1 **Figure 5.** Rarefaction curves, information on the sites is given in the supplementary material.



2

3



1 **Table 1.** Diversity and composition. Information on the sites is given in the **supplementary** material.

$S_{\text{total}}$ , number of species in all samples;  $S_{\text{alpha}10}$ , number of species in sample

3 rarefied to 10 specimens;  $S_{\text{alpha}100}$ , number of species in sample rarefied to 100 specimens;

4  $S_{\text{total}100}$ , number of species in all samples rarefied to 100 specimens.

5

	Grünbach	NE Africa	Guaduas	Cerrejon	Castle Rock	Hunco	Bison basin	Rio Negro	Barro Colorado
	Late Cretaceous	Late Cretaceous	Late Cretaceous	Paleogene	Paleogene	Paleogene	Paleogene	modern	modern
No. sites	NA	8	5	16	5	25	10	7	3
No. specimens	881	354		2191	1015	4303	5664	1048	672
Stotal	52	60	46	65	104	191	23	110	79
Salpha100	NA	28	17	18	30	28	7	21	20
Stotal100	26	40	29	28	43	34	8	42	30
dicots (%)	56	77	80	71	92	86	91	NA	NA
monocots (%)	12	17	11	20	0	2	0	NA	NA
ferns (%)	23	5	9	8	3	4	4	NA	NA
cycads (%)	2	0	0	0	3	1	0	NA	NA
Ginkgoes (%)	0	0	0	0	0	1	0	NA	NA
conifers (%)	8	2	0	2	2	7	4	NA	NA

6