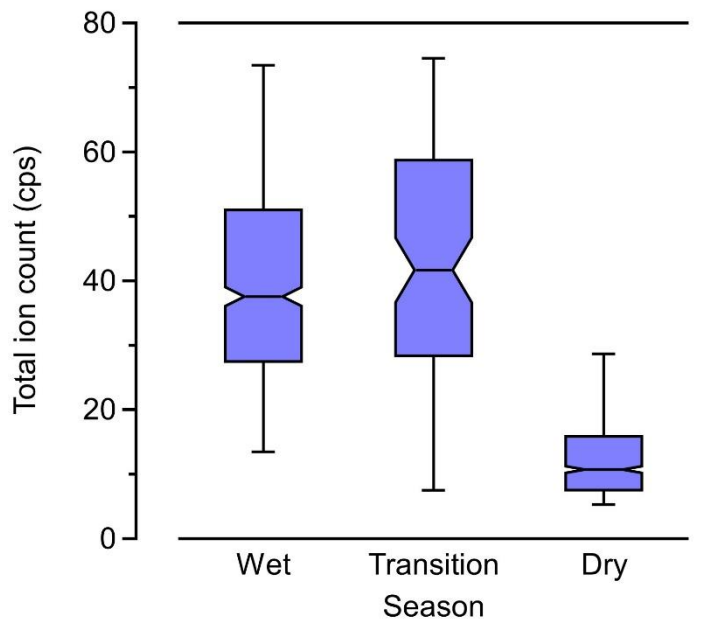


1

2 Figure S1 Influence of different pathways (SRR[%]pathway) averaged over the 5-month campaign.

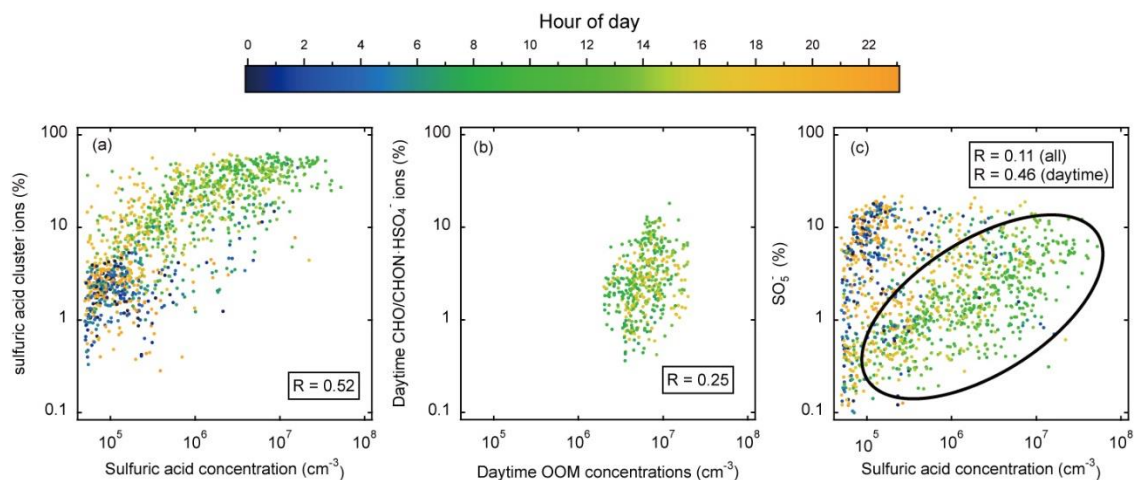
3



4

5 Figure S2 The TIC of negative ions measured by the APi-TOF in the wet, wet-to-dry transition, and dry
6 seasons at the CHC. Data are in 1-hour time resolution.

7

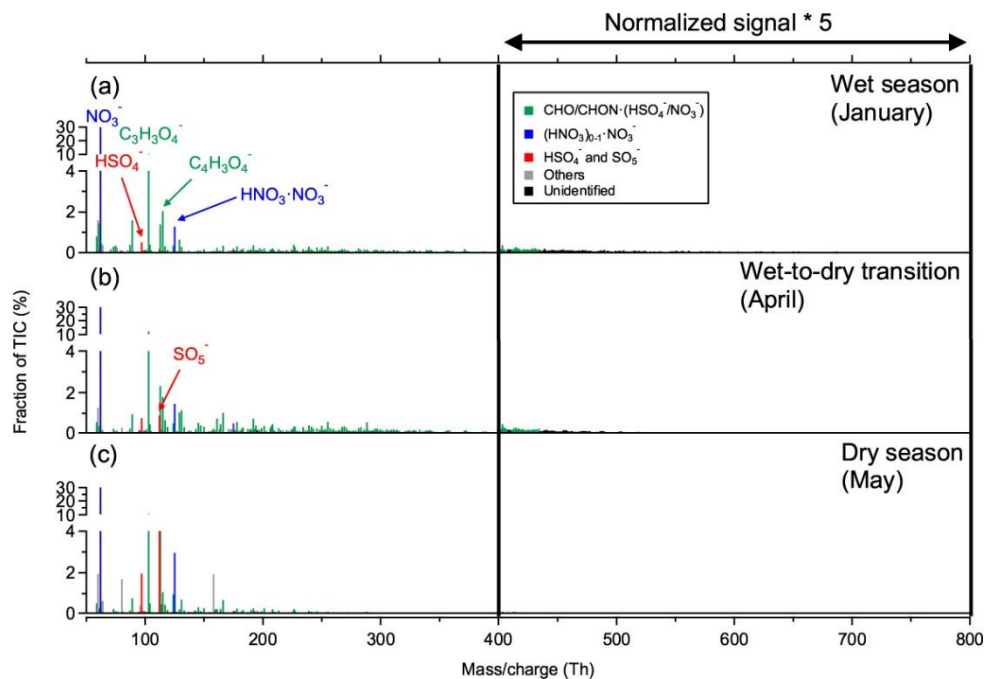


8

9 Figure S3 Relationships between (a) concentration of neutral H₂SO₄ and signal fraction of the (H₂SO₄)₀₋₃·HSO₄⁻ ion group; (b) daytime concentration of OOM and signal fraction of CHO/CHON·HSO₄⁻; and
 10
 11 (c) concentration of H₂SO₄ and signal fraction of SO₅⁻. The black circle in panel (d) denotes the “daytime
 12 branch” of data points. The signal fractions of (H₂SO₄)₀₋₃·HSO₄⁻ and SO₅⁻ ion groups were measured with
 13 the APi-TOF. Concentration of H₂SO₄ was measured with the CI-APi-TOF.

14

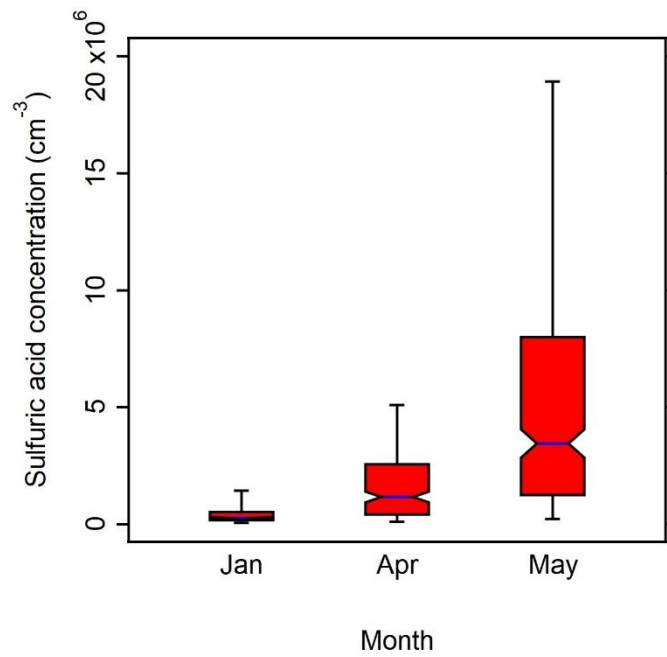
15



16

17 Figure S4 Mass spectra of negative ions at CHC averaged between 19:00 – 07:00 in (a) wet season
 18 (January), (b) wet-to-dry transition period (April), and (c) dry season (May). The normalized signal
 19 intensities from 400 Th to 800 Th are multiplied by a factor of 5 for better visualization.

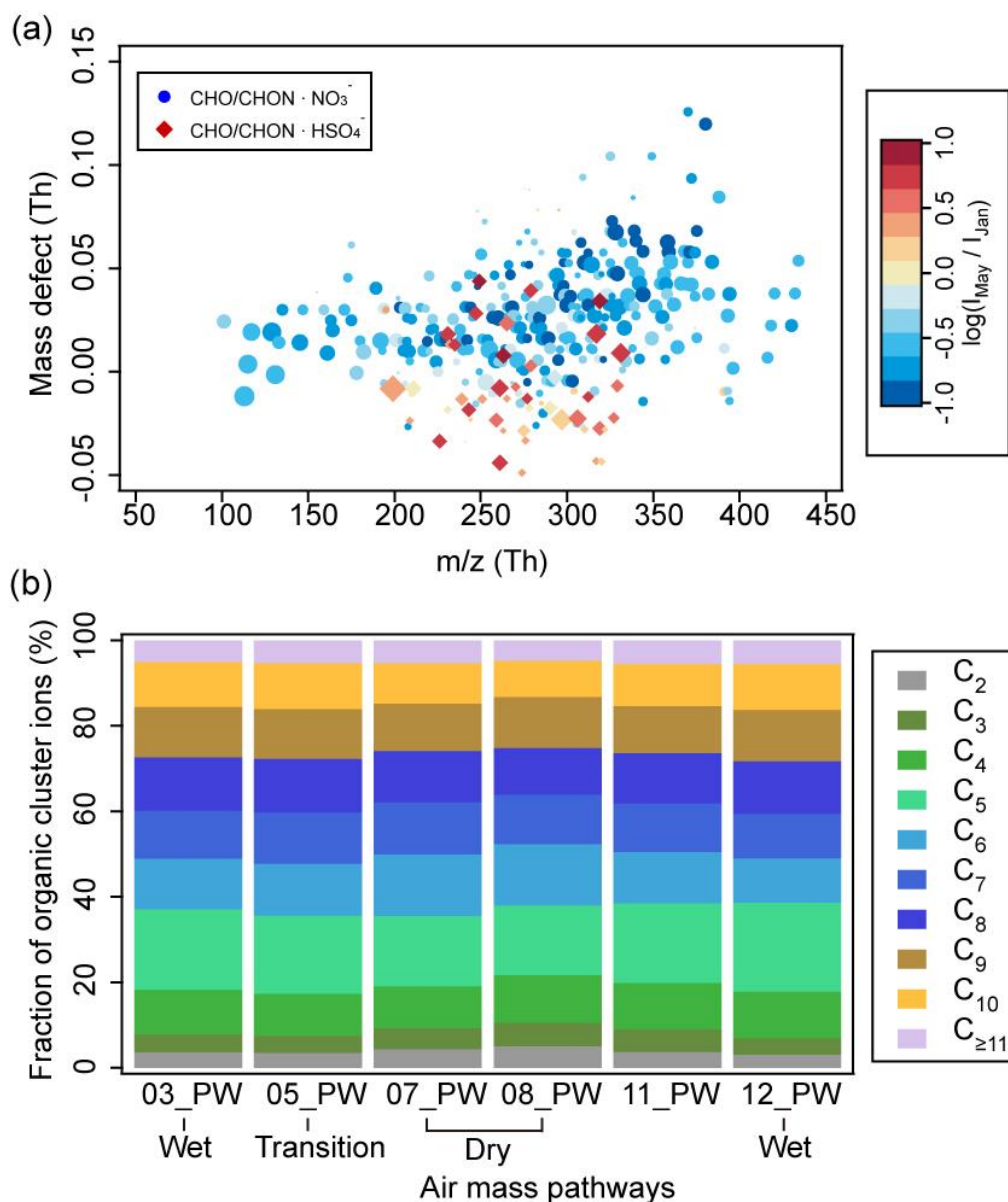
20



21

22 Figure S5 Daytime (07:00 – 19:00) neutral sulfuric acid concentrations measured with the CI-APi-TOF
23 at the CHC during the study period when CI-APi-TOF data were available. Lower and upper limits of
24 the error bars represent 25th and 75th percentiles, respectively.

25

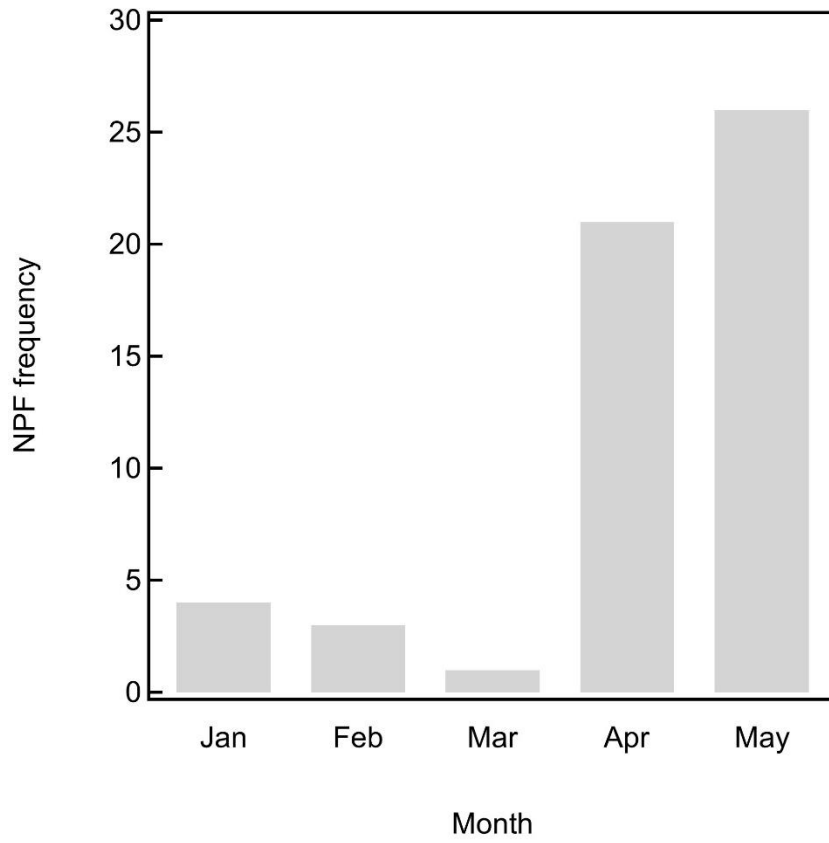


27

28 Figure S6 (a) Mass defect plot of organic cluster ions during daytime (07:00-19:00). The color code
 29 indicates ratios (in log scale) between median signals of each ion detected in May (I_{May}) of dry season
 30 and January (I_{Jan}) of wet season. The marker size is proportional to the log-transformed ion's median
 31 signals in May. (b) Fraction of organic cluster ions from different air mass pathways as a function of
 32 carbon atom numbers during daytime (07:00-19:00). Noted that MA-derived ions were not included in
 33 both panels.

34

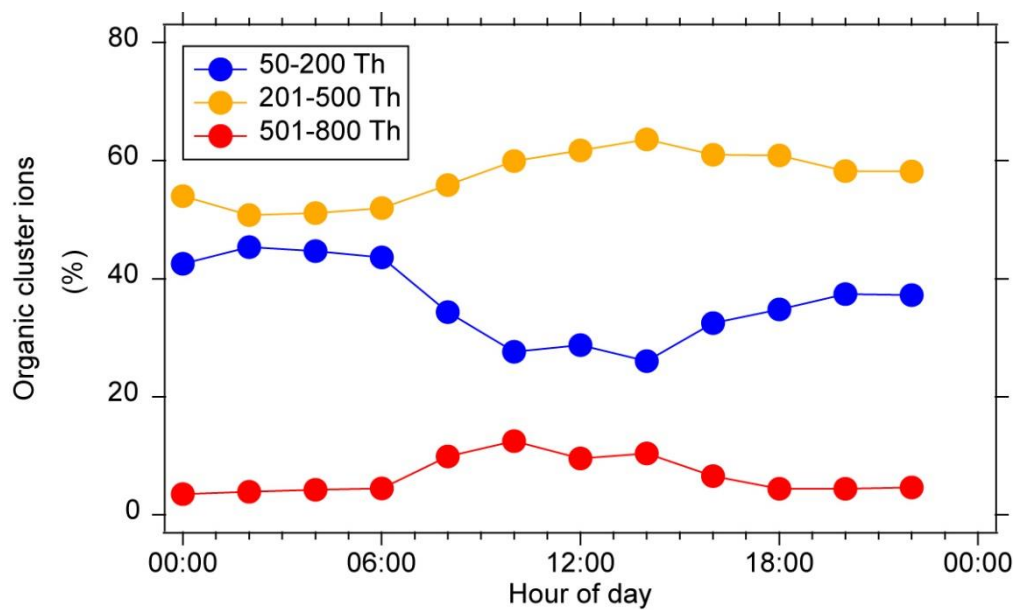
35



36

37 Figure S7 Frequency of NPF at the CHC from January to May 2018.

38



39

40 Figure S8 Variations of positive organic cluster ions in different mass ranges averaged during NPF events
 41 in February and March 2018.

42