

# Statistical analysis of observations of polar stratospheric clouds with a lidar in Kiruna, northern Sweden

Peter Voelger<sup>1</sup> and Peter Dalin<sup>1</sup>

<sup>1</sup>Swedish Institute of Space Physics (IRF), Kiruna, Sweden

**Correspondence:** Peter Voelger (peter.voelger@irf.se)

**Abstract.** In the present paper, we analyze 11 years of lidar measurements to derive general characteristics of Polar Stratospheric Clouds (PSCs) and to examine how mountain lee waves influence PSC properties. Measurements of PSCs were made with a backscatter lidar located in Kiruna, northern Sweden, in the lee of the Scandinavian mountain range. The statistical analysis demonstrates that nearly half of all observed PSCs consisted of nitric acid trihydrate (NAT) particles while ice clouds were only a small fraction, supercooled ternary solution (STS) and a mixture of different components making up the rest. Most PSCs were observed around 22 km altitude. Mountain lee waves provide a distinct influence on PSC chemical composition and cloud height distribution. Ice PSCs were about 5 times as frequent and NAT clouds were about half as frequent under wave conditions. PSCs were on average at 2 km higher altitudes when under the influence of mountain lee waves.

## 1 Introduction

10 Polar stratospheric clouds (PSCs) are a well-known feature of the polar wintertime stratosphere. Their influence on chemical reactions related to ozone depletion in the lower stratosphere was first postulated shortly after the discovery of the Antarctic ozone hole and has since then been subject of many studies (for reviews see e.g. Solomon (1999), Lowe and MacKenzie (2008), or Tritscher et al. (2021)). In short, ~~PSC formation~~ the formation of PSC particles that contain nitric acid has been identified to accelerate ozone depletion by (a) enabling reactions that create chlorine radicals on the surfaces of cloud particles, (b) removing gas-phase  ~~$\text{HNO}_3$~~   $\text{HNO}_3$  in the formation of cloud particles and (c) permanently depleting the stratosphere of  ~~$\text{HNO}_3$~~   $\text{HNO}_3$  through sedimentation of those particles. The impact a PSC has on ozone concentration depends on the composition of the cloud (Kirner et al., 2015; Tritscher et al., 2021). PSCs typically consist of nitric acid trihydrate (NAT, a compound consisting of nitric acid and water at a molar ratio of 1:3), supercooled ternary solution (STS, a mixture of nitric acid, sulfuric acid and water), or water ice. In the context of lidar measurements such clouds are also referred to as type Ia, Ib and II, respectively  
20 (Browell et al., 1990), as the backscatter signals from these different PSC types have very distinct characteristics. Additional subtypes have been proposed to explain observations that don't fit any of the above three types. These subtypes include modified components or mixtures of the basic cloud types (see e.g. Tabazadeh and Toon (1996), Stein et al. (1999), Massoli et al. (2006)). Based on laboratory studies additional compounds have been predicted to exist in PSCs but could, so far, not be identified in natural stratospheric clouds beyond any doubt (Tritscher et al. (2021) and references therein).

25 The significant contribution of PSCs to ozone depletion is one of the major reasons for investigating and monitoring these clouds. Satellites, due to the near global coverage of their observations, offer a way to study the worldwide distribution of PSCs. An early attempt to prepare a ~~multiyear~~ multi-year statistic based on satellite data was undertaken by Poole and Pitts (1994) who statistically analysed PSC occurrence by means of limb measurements with the photometer SAM II on board of Nimbus 7. Datasets from other, more advanced instruments have become available in recent decades (Spang et al., 2018; Pitts et al., 2018  
30 ). Prominent examples are MIPAS (Michelson Interferometer for Passive Atmospheric Sounding) on board of Envisat (2002–2012) and CALIOP (Cloud-Aerosol Lidar with Orthogonal Polarization) on the ~~Calipso~~ CALIPSO satellite (since 2006). On the basis of MIPAS measurements it was possible to infer the chemical composition of ~~clouds~~ PSCs. The MIPAS dataset has been utilised for long-term studies of the composition of PSCs (Spang et al., 2018). CALIOP collects backscatter signals from the atmosphere that give information about PSCs with better spatial resolution than what is possible with passive remote  
35 sensing techniques. ~~The data has resulted in estimates of the global distribution of PSCs (see e.g. Pitts et al., 2018), as e.g.~~ MIPAS. Over the period of operation the lidar data has been used to generate multiple global PSC climatologies with the latest version covering 11 years of observations until 2017 (Pitts et al., 2018).

While satellite-borne instruments provide observations with nearly global coverage, ground-based lidar measurements are better suited to give insight in how the specific conditions at the location of the instrument affect PSCs. The time and ver-  
40 tical resolution of ground-based lidar observations are better than what can be achieved by spaceborne instruments, thus enabling detailed studies of local peculiarities. Several ground-based lidars have been or were operating over sufficiently long periods to allow for the statistical analysis of PSC characteristics at the respective locations. Santacesaria et al. (2001) and Tencé et al. (2022) compiled such data, although for different periods, for the lidar at the Dumont d’Urville research station in Antarctica. ~~Adriani et al. (2004)~~ published a similar survey for the McMurdo station, also in Antarctica. Studies for data from  
45 the Arctic region were published by Massoli et al. (2006) for Ny-Ålesund, Spitsbergen, and by Blum et al. (2005) and Achtert and Tesche (2014), both the latter examined more than a decade of measurements with a lidar at Esrange in northern Sweden.

Atmospheric waves are known to create temperature perturbation due to adiabatic cooling/warming when a wave forces an air parcel to move vertically. In the stratosphere such changes of the temperature can affect PSC formation and composition. As most prominent sources for waves have been identified topography, convection and adjustment of unbalanced flow near  
50 jet streams and frontal systems (Hoffmann et al., 2017). Depending on the horizontal wavelength atmospheric waves are classified as planetary, synoptic-scale, or gravity waves. ~~Of the latter~~ While the boundaries between these types are not exactly defined, it is generally assumed that the former comprises horizontal wavelengths of a few 1000 km or more, the latter of less than several 100 km, and the synoptical scale covering the range in between. Of the gravity wave type, inertia gravity waves (horizontal wavelengths > 10 km) are significant, since they are not trapped at low altitudes but can propagate up to  
55 the stratosphere and even the mesosphere (Fritts and Alexander, 2003). Utilizing ~~ECMWF analysis data~~ analysis data that was produced by the European Centre for Medium-Range Forecast (ECMWF) Teitelbaum and Sadourny (1998) showed that the distribution of temperatures that allow the formation of PSCs in the Arctic region is, to a large extent, correlated with the upwelling of isentropic surfaces as a result of planetary waves. Kohma and Sato (2011) used, among other data sets, CALIPSO observations to examine the extent to which waves of different scales influence the formation of PSCs. They deduced that

60 stationary planetary waves are the dominant factor in the formation of PSCs in the Arctic while synoptic-scale waves only have small influence. They further concluded that inertia gravity waves have negligible impact on Arctic PSC formation. Their reasoning, however, is based on data from only one winter season which, given the large interannual variability of Arctic winter conditions, is a too short period to draw definite conclusions. On the other hand, Alexander et al. (2013), using CALIPSO and other satellite data spanning four winter seasons, determined that mountain lee waves, a subtype of inertia  
65 gravity waves, significantly influenced PSC composition and were responsible for nearly 1/3 of all PSC occurrences in the Arctic. The differences between the conclusions by Kohma and Sato (2011) and those by Alexander et al. (2013) indicate that, due to large interannual variability, statistically sound conclusions have to be based on a data base that spans ~~several years at~~ least several years, preferably a decade or more.

Mountain lee waves are typically generated when air is vertically displaced while wind is blowing across mountains. Under  
70 favourable conditions such waves can propagate from the surface up to the mesosphere. The stratospheric temperature perturbations that are associated with them can be as much as 10 ~~degrees K~~ or more (Dörnbrack et al., 1997). Hence, they can trigger both the formation of a PSC (Voelger and Dalin, 2021) and the change of the ~~cloud-PSC~~ composition (Carslaw et al., 1999). Although mountain lee waves are regionally confined phenomena they can set off the formation of meso-scale PSCs (Carslaw et al., 1998b; Eckermann et al., 2009). ~~Hence, they can~~ Chemical reactions on the surfaces of PSC particles can then cause  
75 large-scale ozone depletion. Pitts et al. (2011) showed that CALIPSO data can be used to detect the impact of mountain lee waves on PSCs and Alexander et al. (2013) utilised this capability for estimating the role of these waves in PSC formation. However, Alexander et al. (2013) pointed out that CALIPSO can miss the detection of mountain lee waves, as only a small, random portion of a wave might be sampled which not necessarily shows the backscatter characteristics which were defined for identifying waves in CALIPSO observations. Moreover, the low sampling frequency results in that many cases with waves  
80 being present are missed. For fixed locations observations with a ~~groundbased~~ ground-based lidar can therefore give more detailed data.

Kiruna, the location of our lidar, is situated on eastern slopes of the northern part of the Scandinavian mountain range, a region where mountain lee waves frequently occur (Rao et al., 2008). Several field campaigns have been conducted in northern Scandinavia in the past decades which investigated cases when mountain lee waves influenced composition and geometry of  
85 PSCs (see e.g. Tsias et al., 1999; Dörnbrack et al., 2002; Lowe et al., 2006; Dörnbrack et al., 2012; Mollenker et al., 2014). The aim of our study is to present a systematic investigation of the impact mountain lee waves have on PSC characteristics at a location where such waves are frequently present. We will use data from 11 years of measurements with our lidar (in the following also referred to as *IRF lidar*) both to derive general characteristics of the observed PSCs and to examine how mountain lee waves influence PSC properties. We first shortly describe the lidar and the data that has been used in this study.  
90 We then derive some general characteristics of PSCs over our location and compare them with results from similar studies. Thereafter we discuss, with help of a statistical analysis of the data, how mountain lee waves modified PSCs above Kiruna.

## 2 ~~Tools~~Data and Method

Lidar observations were performed with a backscatter lidar that is located on the premises of the Swedish Institute of Space Physics (IRF) in Kiruna at 67.84°N, 20.41°E. The lidar operates at 532 nm wavelength and has two detection channels to distinguish backscatter signals with two orthogonal planes of polarisation. Light with the same plane of polarisation as the laser will in the following be denoted as parallel while perpendicular will refer to light with a polarisation plane perpendicular to that of the laser. Height and time resolution are 30 m and 133 s, respectively. The altitude range for observations is from 5 to 50 km (see Voelger and Nikulin (2005) for a more detailed description of the lidar characteristics). Measurements were performed during winters from 2007/08 to 2017/18. Specifics on the distribution of observations during this period will be discussed in the next section. Measurements were carried out whenever conditions were favourable for the presence of PSCs, i.e. predicted temperatures in the stratosphere were approximately around PSC existence temperatures or lower, and weather conditions allowed for lidar measurements of the stratosphere. Temperature predictions were provided by the Danish Meteorological Institute, based on forecasts by the ~~European Centre for Medium-Range Forecast (ECMWF)~~ECMWF. Lidar observations were restricted to nighttime and twilight for better signal quality. For the subsequent analysis we integrated our measurement data over time to derive hourly averages. Additionally, a 5-point moving average over altitude was applied.

The signal that the lidar detects is proportional to the backscattering that is caused by molecules, aerosol particles, and cloud particles in the atmosphere. When considering the stratosphere the contribution of particles to the backscattering at 532 nm from a cloud-free atmosphere (i.e. outside PSCs) can be assumed to be a few percent only (Thomason et al., 2007). In the context of PSC observations the backscattering from both molecules and aerosol particles combined represent the background signal.

Parameters that are commonly used to describe PSCs in lidar measurements are the backscatter ratio of the parallel channel,  $R_{\parallel}$ , and the depolarisation ratio  $\delta$ . We define  $R_{\parallel}$  as the ratio of total backscatter coefficient to that of the atmospheric background, both for the parallel channel:

$$R_{\parallel} = \frac{\beta_{\parallel,PSC} + \beta_{\parallel,BG}}{\beta_{\parallel,BG}} \quad (1)$$

with  $\beta$  being the backscatter coefficient and indices  $PSC$  and  $BG$  denoting cloud and background, respectively. As background we consider contributions from both molecules and stratospheric aerosol particles.  $R$  is larger than 1 implies that a cloud is present. The backscatter coefficient of the background can be assumed to be proportional to the interpolated signals from below and above the PSC. Similarly, the cumulative backscatter coefficients of background and PSCs is proportional to the total backscatter signal. Hence,  $R_{\parallel}$  can be calculated as

$$R_{\parallel} = \frac{I_{\parallel,tot}}{I_{\parallel,BG}} \quad (2)$$

where  $I_{\parallel,tot}$  denotes the total backscatter signal and  $I_{\parallel,BG}$  the interpolated signal without PSC, both for the parallel channel. The backscatter ratio for the perpendicular channel,  $R_{\perp}$ , can be estimated in an analogous way. From the backscatter ratios for

both channels the depolarisation ratio can be determined:

$$\delta = \frac{R_{\perp}}{R_{\parallel}} \delta_{mol} \quad (3)$$

125 where  $\delta_{mol}$  is the depolarisation ratio of molecular backscattering. We assume that stratospheric background aerosol particles are predominantly sulfuric acid droplets which are spherical particles and, therefore, do not change the polarisation of light that is scattered on them at  $180^{\circ}$  (i.e. backscattering). For our lidar we estimate  $\delta_{mol}$  as 0.02. The backscatter signals in both receiver channels can be skewed by (a) cross talk between both channels and (b) polarising effects of the receiver optics. We examined the error from both sources by using white light with a controlled state of polarisation (method described by Mattis et al. (2009)). Our tests showed that the errors for our lidar are negligible.

For evaluation of the atmospheric conditions that were prevalent during lidar measurements we used horizontal wind fields from the ERA5 dataset (Hersbach et al., 2017) that can be obtained from ECMWF (Hersbach et al., 2020)(Hersbach et al., 2018; Hersbach et al., 2020). Such data is available for every full hour with a horizontal resolution of 31 km. The data comes at 137 vertical levels between surface and 1 Pa pressure level since mid 2013 and at 91 levels before.

## 135 3 Data analysis

### 3.1 General PSC characteristics

The lidar was operated during 11 winter seasons, starting in late 2007 and ending in early 2018. During this period measurements of PSCs were performed in 102 nights. In total, 738 hours of observations were accumulated. The distribution of measurement times per year is shown in Figure 1. The number of nights with observations per season was varying between 140 2 nights during winter 2014/15 and 19 nights (2015/16). ~~The To a large extent, the~~ year-to-year variation is ~~partly due to a consequence of~~ interannual variations of ~~location and strength of~~ the polar vortex ~~, as has been discussed for CALIPSO data by Pitts et al. (2018). Another limiting factor~~ and of the temperatures inside of it. ~~The influence of vortex conditions becomes apparent when comparing the two winters mentioned above, 2014/15 and 2015/16. The stratosphere during winter 2014/15 was relatively warm (Wohltmann et al., 2020), resulting in that both the period when conditions were favourable for PSC formation~~ was relatively short and that the PSC areal coverage was small. As a consequence, at our location PSCs were present only during a few nights. On the other hand, during winter 2015/16 the polar vortex was unusually cold and stable (Manney and Lawrence, 2016; Matthias et al., 2016; Khosrawi et al., 2017). This resulted in a very large PSC areal coverage over a long period and, therefore, more opportunities for ground-based lidar observations of PSCs.

~~A second factor that limits the number of observations~~ are tropospheric clouds~~that, if they~~, i.e. weather conditions. If those 150 ~~clouds~~ are optically too thick, ~~they~~ prohibit measurements of stratospheric features from the ground. ~~More than half of all PSC events were observed during January.~~ ~~Weather conditions are highly variable, therefore number and length of periods of sufficiently good conditions for stratospheric observations changes from year to year. The influence of tropospheric clouds becomes obvious when comparing the number of days with measurements during winters 2012/13 and 2013/14. The number of observation events and the total number of measurement hours were the same in both winters. Yet, the stratospheric conditions~~

Month	Days with $T < T_{NAT}$	lidar observations
Nov	9 (2.4%)	1 (1.0%)
Dec	116 (31.2%)	28 (27.5%)
Jan	167 (44.9%)	61 (59.8%)
Feb	61 (16.4%)	12 (11.8%)
Mar	17 (4.6%)	0 (0%)
Total	370 (100%)	102 (100%)

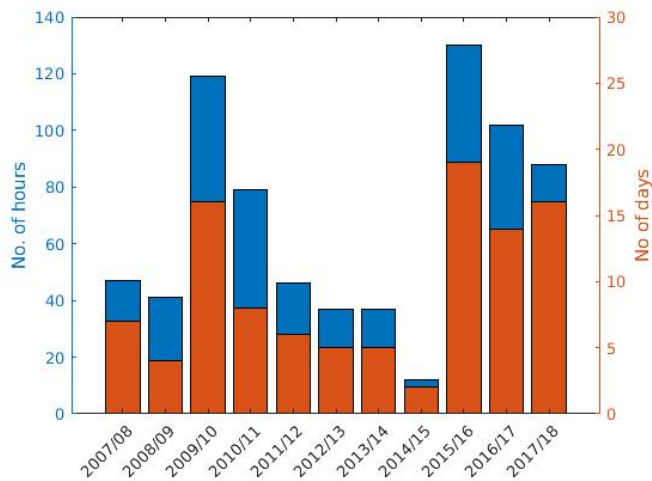
**Table 1.** Number of nights when temperatures over Kiruna (derived from ECMWF analysis data) were sufficiently low to allow for PSCs to exist (left column) and number of nights when lidar measurements were performed (right column). The numbers are for the whole period Nov 2007– Mar 2018.

155 were different. The polar vortex during winter 2012/13 was relatively weak and broke up already in early January while during  
the following winter the vortex was stronger and lasted until late January (Lawrence and Manney, 2018). Hence, conditions  
that were favourable for PSCs occurred more often during 2013/14. That these differences are not reflected in the number  
of our measurements has to be explained by differences in the prevailing tropospheric conditions. While cloudiness of the  
troposphere does affect annual measurement statistics to various degree, we expect the influence to average out over the period  
160 that is included in this study.

The earliest measurement during a winter season was on November, 30th (2017), the latest on February 18th (2017). ~~In~~  
~~all years considered here, PSCs were visible by eye more often than conditions were sufficiently good to perform~~ About  
60% of all measurements of PSCs were during January, 27% and 12% during December and February, respectively. This  
is consistent with visual statistical PSC observations in Kiruna. As PSCs, when observing from the ground, sometimes are  
165 obscured by tropospheric clouds the exact number of nights with PSCs present over our location is unknown. However,  
stratospheric temperatures can be used as an indicator for periods that were sufficiently cold for PSCs to exist. Based on  
the thermodynamic equilibrium equations for NAT that were formulated by Hanson and Mauersberger (1988) and on the daily  
analysis of atmospheric conditions prepared by the ECMWF, the Danish Meteorological Institute composes maps of the Arctic  
region for certain altitudes that indicate areas where PSCs can exist (i.e.  $T < T_{NAT}$ )<sup>1</sup>. Table 1 shows the monthly numbers  
170 of nights with  $T < T_{NAT}$  for the period of our observations and the monthly number of nights with actual lidar measure-  
ments. Based on temperature, observations during January are slightly overrepresented in our data while measurements during  
November and December are relatively rare. A likely reason is that the troposphere during those months is less stable and  
tropospheric clouds are more common. Hence, opportunities for lidar measurements are less frequent. Similarly, during later  
winter (months February and March) we performed relatively few measurements in relation to the number of nights when

<sup>1</sup><http://psc.dmi.dk>

175 temperatures were below the calculated existence temperatures for NAT. Here, the reason most probably is that for calculating  $T_{NAT}$  a constant concentration of the NAT precursor  $\text{HNO}_3$  during the whole winter is assumed, and, hence,  $T_{NAT}$  is constant as well, while actual concentrations of  $\text{HNO}_3$  are decreasing over the winter due to denitrification of the stratosphere as a result of PSC formation. Lower concentrations of  $\text{HNO}_3$  then require lower temperatures for particles to form.



**Figure 1.** Annual statistic of IRF lidar measurements. Blue marks the hours of measurements per year, red bars are the number of nights with PSC observations.

~~Hourly averages were calculated for all available measurement data.~~ For all available data of lidar measurements hourly averages were calculated and included in the following analysis. ~~In~~ This is different from the statistical analysis that Adriani et al. (2004) presented in their study of PSCs at the McMurdo station. Adriani et al. (2004) utilised only one profile per Julian day in order to avoid a possible bias ~~when observation periods as observation periods may~~ vary from day to day. This approach presumes that PSCs show only minor variations during a day so that one hourly profile can be considered as representative for the whole 24 hour period. ~~As~~ Since mountain lee waves are frequently present at our location, PSC characteristics can change significantly within a short time. Using only one profile per Julian day would not account for the variations that ~~occured~~ can occur during that period, or, in our case, over the course of a night.

The characteristics of the backscatter signal from a PSC depend on the type of particles in the cloud. Combining signal strength, or as a derived parameter, the backscatter ratio, with the depolarisation of the backscatter makes it possible to classify PSCs according to their composition. However, parameter ranges depend in part on the lidar system and the wavelength(s) it utilises. Several sets of criteria to classify observed clouds have been suggested in the past (see e.g. Browell et al., 1990; Biele et al., 2001; Pitts et al., 2018). ~~Achtert and Tesche (2014) compared a selection of classification schemes and concluded that the decision which scheme is most suitable depends on the type of data that is available~~ A thorough comparison of these and a few other classification schemes was conducted by Achtert and Tesche (2014). They pointed out that PSC classifications were generally developed with the purpose of interpreting a certain set of data and that, hence, thresholds for PSC types

195 were set with respect to instrumental constraints, measurement conditions, and which PSC-related parameters were available.  
Achtert and Tesche (2014) concluded that in order to better be able to distinguish PSC types other than ice, the classification  
scheme should be based on the backscatter ratios for both planes of polarisation instead of the total ratio. They further argue  
that of the PSC classifications that only use lidar observation data the scheme proposed by Blum et al. (2005) has the best  
performance.

200 ~~Our classification is similar~~Our lidar is similar in design to the one ~~suggested by Blum et al. (2005), as both our lidar~~  
~~setup as well as the format of our data is similar to theirs~~used by Blum et al. (2005) for their long-term study. Therefore our  
classification is based on the same parameters theirs, i.e.  $R_{\parallel}$  and  $\delta$ . However, we slightly modified the thresholds for the  
depolarisation ratio. Since our lidar utilises other, wider bandwidth filters to suppress atmospheric noise, we have to account  
for a larger background depolarisation. For the backscattered signal to be interpreted as being influenced by the presence of  
205 PSCs the backscatter ratios in either detection channel should be clearly distinguishable from the background. For our lidar  
data we set lower limits to 1.05 and 1.1 for the parallel and the perpendicular channel, respectively. These numbers mean that  
we potentially miss a few very thin PSCs. However, in the vast number of cases cloud boundaries were not sensitive to the  
lower limits for  $R$ . The values used in our classification scheme are summarised in Table 2. Combinations of  $R_{\parallel}$  and  $\delta$  that  
don't match any particular PSC type are assumed to consist of a mixture of different types of particles. It ~~has to~~should be  
210 noted that ~~PSCs that are classed as~~setting of fixed boundaries for individual types means a simplification of actual atmospheric  
conditions. This can lead to misclassification of measurement data. Pitts et al. (2013) and Pitts et al. (2018) discussed this issue  
for data inverted from CALIOP observations where the problem is mainly due to signal noise. In our case, temporal and spatial  
averaging will mean that fine PSC structures, e.g. filament layers, can get blurred. Furthermore, a PSC that is subject to vertical  
motion due to mountain lee waves will experience temperature changes of several Kelvin. During that motion the PSC is out  
215 of its thermodynamic equilibrium which in turn results in fast changes of the composition. Mountain lee waves are seldom  
stationary, a consequence of the complex topography and wind changes that generate them. Therefore, averaging over time  
can cover different parts of the wave motion. Finally, Biele et al. (2001) and Pitts et al. (2009) pointed out that PSCs showing  
optical characteristics of a certain type can still contain some, minor amount of other ~~compound as well~~(Biele et al., 2001;  
Pitts et al., 2009)compounds as well.

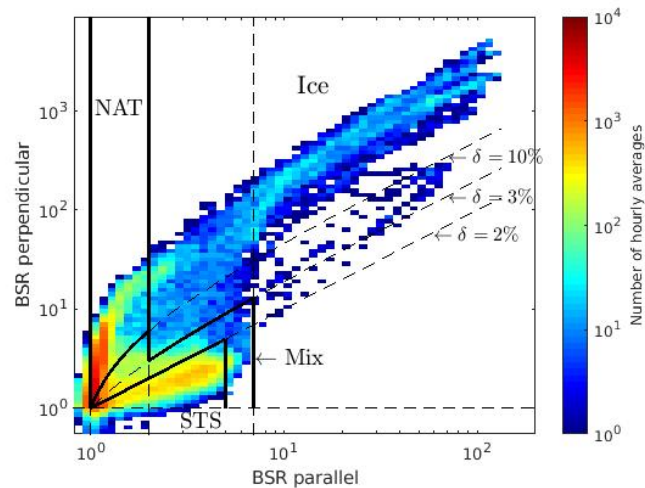
220 Figure 2 shows a 2-D histogram of the backscatter ratios for parallel and perpendicular polarisation for ~~cloud~~PSC increments  
of all our measurements. ~~Two regions~~The boundaries of the various PSC types are shown, as well. Two clusters with large  
numbers of observations become obvious, one with small  $R_{\parallel}$  and large  $R_{\perp}$  (i.e. large  $\delta$ ) ~~, as characteristic for type Ia, and one~~  
~~vice versa (type Ib).~~Additionally, the histogram shows a and one with small  $R_{\perp}$  and moderately large  $R_{\parallel}$  (i.e. small  $\delta$ ). The first  
225 cluster represents observations with the characteristics of PSCs consisting of NAT particles while the latter is typical for PSCs  
with STS. Additionally, a third, smaller cluster of measurements exists with large  $R$  in both channels, indicating ~~type II~~PSCs  
ice PSCs. Moreover, the histogram shows that a considerable number of data points are found between those three clusters.  
This can be interpreted as that the observed PSCs in many instances consisted of combinations of compounds instead of being  
predominantly composed of NAT, STS, or ice. Therefore, the boundaries between PSC types are in reality somewhat blurry.  
Mixtures of STS with one of the other types result in moderate depolarisation ratios and will be summarised as an additional



PSC type		Backscatter ratio $R_{\parallel}$	Depolarisation ratio $\delta$
Type Ia (NAT-NAT (type Ia))		$1.05 < R_{\parallel} < 2$	$\delta > 10\%$
Type Ib (STS-STN (type Ib))		$1.1 < R_{\parallel} < 5$	$\delta < 2\%$
Type II (iceIce (type II))	either or	$2 < R_{\parallel} < 7$ $R_{\parallel} > 7$	$\delta > 3\%$ any

**Table 2.** Classification criteria for PSCs observed with the IRF lidar.

230 type, called 'Mix'. The distinction between NAT and ice PSCs is not obvious, as both cause significant depolarisation ratios. From the point of lidar measurements, the principal difference between both types is the valid range for  $R_{\parallel}$ . However, it is well established that ice particles can act as seeds for the nucleation of NAT (see e.g. Carslaw et al., 1998a; Hoyle et al., 2013). Therefore, hybrids with according parameters can be expected at a certain rate at and near the boundary between both types.



**Figure 2.** Frequency of backscatter ratios (BSR) of parallel versus perpendicular channel for all PSC observations with the IRF lidar. Typical parameter ranges for PSC types Ia-NAT, Ib-STN, and II-Ice are indicated by thick, solid lines. Lines for some constant depolarisation ratio  $\delta$  and some constant backscatter ratios are added for reference (dashed lines).

235 Displaying all our measurements as a piechart (Figure 3) shows that PSCs of type Ia were NAT was most common with almost half of all measurement points (46%). Type II-Ice amounted to 6% of the observations while Ib-STN and a mixture of particles occurred in 26% and 21% of all cases, respectively. The large portion of type Ia-NAT clouds can be attributed to the fact that STN and ice-NAT particles can exist at relatively warm temperatures (acc. to Hanson and Mauersberger (1988) at up to 7 K above the frost point of ice,  $T_{ice}$ ). STN particles require lower stratospheric temperatures to exist which often

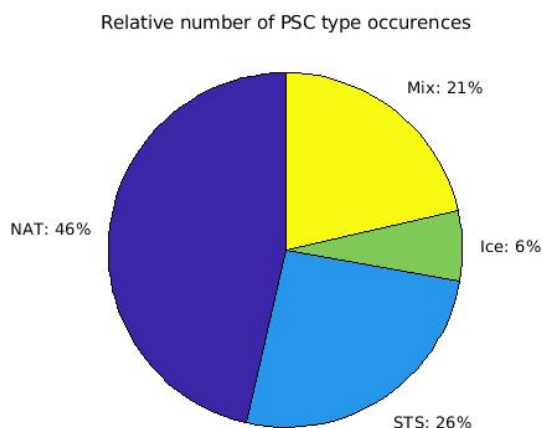
~~are not~~, Carslaw et al. (1995) determined the equilibrium temperature to be appr.  $T_{ice} + 4K$ . Temperatures sufficiently low for ice PSCs to exist are rarely reached in the Arctic stratosphere, therefore such PSCs are not common. Compared to Pitts et al. (2018) our data shows less NAT PSCs and more mixed-type clouds. A possible reason could be that Pitts et al. (2018) included data for the whole Arctic region while ours are from a single location. ~~In comparison to Blum et al. (2005) our data contains more observations of NAT and less STS clouds. Differences could be due to their measurements~~ A climatology that Massoli et al. (2006) compiled for lidar observations at Ny-Ålesund, Spitsbergen found PSC types liquid (i.e. STS), NAT (including subtypes), and mixed to occur roughly equally frequent, with liquid being slightly more common. Since Ny-Ålesund is located further north, and, on average, closer to the center of the polar vortex than our location, colder stratospheric temperatures can be expected there, leading to more frequent conditions that allow STS to exist. The results presented by Blum et al. (2005) and by Achtert and Tesche (2014) are based on lidar measurements at Erange in Northern Sweden, a location situated roughly 40 km from our lidar. Hence, atmospheric conditions at both measurement sites are fairly similar. Nevertheless, PSC statistics differ to some extent. A reason for those differences could be that their measurements were being performed during campaigns, mostly between end of December and end of January when the Arctic polar vortex often is in its coldest phase. ~~Our measurements, on~~ On the other hand, our measurements were done throughout the whole PSC season whenever conditions allowed for lidar observations. Therefore, ~~they our measurements~~ were more often covering periods when the polar vortex was less well developed and, hence, the stratosphere was relatively warm.

The height distribution of our PSC observations is shown in Figure 4. For statistical purposes all cloud pixels were integrated into 1 km height intervals. ~~The lowest clouds were observed~~ In all cases when cirrus clouds were present during measurements they were spatially separated from the lowest PSC layer by at least a few km. Hence, an erroneous classification of a cirrus cloud as PSC can be excluded for our data. The lowest PSCs that were observed at our location were at altitudes between 14 and 15 km, the highest were between 33 and 34 km (The ~~number fraction~~ of cloud pixels in the highest interval ~~was is~~ too small to be distinguished from the y-axis of ~~the~~ Figure 4.). Most frequent occurrences were at altitudes of 21 to 23 km. ~~This where~~ approximately 1/4 of all PSCs were observed. The mean height was 21.48 km, standard deviation of the height distribution 3.04 km (see Table 3). Mean and median height were very similar, indicating that the height distribution was fairly symmetric around the mean height and close to the normal distribution. The height distribution of our data is consistent with ~~findings by Pitts et al. (2018)~~ what was reported by Pitts et al. (2018) who, based on 11 years of CALIPSO observations, showed that, for the Arctic region as the whole. ~~In all cases when cirrus clouds were present during measurements they were spatially separated from the lowest PSC layer by at least a few km. Hence, an erroneous classification of a cirrus cloud as PSC can be excluded for our data.~~, the PSC areal coverage is largest between 19 and 23 km.

Similarly, height distributions can be compiled for each PSC type separately (Figure 5). For all types of our classification, except for ice, the mean height of PSCs is between 21 and 22 km. The higher mean height for ice PSCs is a result of those clouds being primarily observed when gravity wave conditions prevailed. This will be discussed further down. The standard deviation  $\sigma$ , a measure for the width of the height distribution, is largest for NAT and Mixed PSCs. These two types also have large portions of cloud pixels at altitudes below 20 km (35% and 37% of observed PSC of respective type). Additionally, for both types mean and median of the respective height distributions are similar, meaning they are close to the normal distribution.

275 On the other hand, for ice and for mixed PSCs the medians of the height distributions are smaller than the respective means, indicating that they are skewed towards larger heights.

The relative frequency of cloud-PSC types differed with altitude and is presented in Figure 6. Type-Ia clouds-NAT PSCs were prevalent up to 26 km while above a mixture of particle types was mixed PSCs were more common. Type-II clouds-Ice PSCs were rarely observed below 20 km but most common-the most common PSC type between 28 and 30 km. Given the different existence temperatures for PSC types this suggests that PSCs at higher altitudes are more likely to have relatively exist at low temperatures.



**Figure 3.** Relative distribution of PSC types for all measurements.

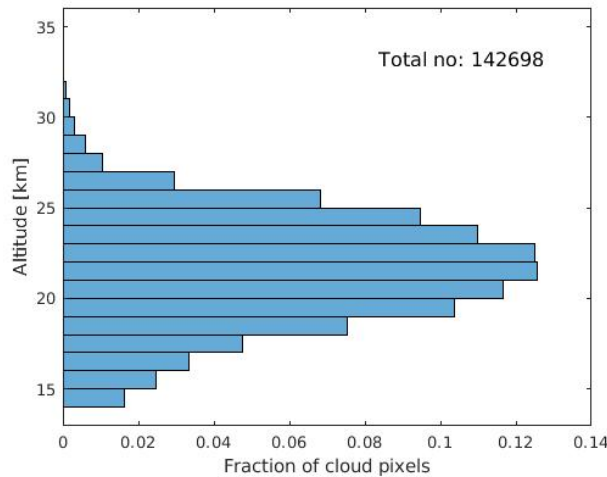
	<u>all</u>	<u>NAT</u>	<u>STS</u>	<u>Ice</u>	<u>Mix</u>
<u><math>\mu</math> [km]</u>	<u>21.48</u>	<u>21.13</u>	<u>21.79</u>	<u>23.43</u>	<u>21.30</u>
<u><math>Me</math> [km]</u>	<u>21.61</u>	<u>21.34</u>	<u>21.82</u>	<u>23.05</u>	<u>21.04</u>
<u><math>\sigma</math> [km]</u>	<u>3.04</u>	<u>3.14</u>	<u>2.61</u>	<u>2.43</u>	<u>3.20</u>

**Table 3.** Mean height ( $\mu$ ), median height ( $Me$ ), and the standard deviation of the height distribution ( $\sigma$ ), the latter being a measure for the width of height distribution, for our whole data set. Numbers are given both for all PSCs combined and for the individual types separately.

280

### 3.2 Wave influence on PSCs

The Scandinavian mountain range is known to be one of the major sources for mountain lee waves in the Arctic region (Hoffmann et al., 2017). This circumstance has triggered several case studies, addressing the questions related to the generation



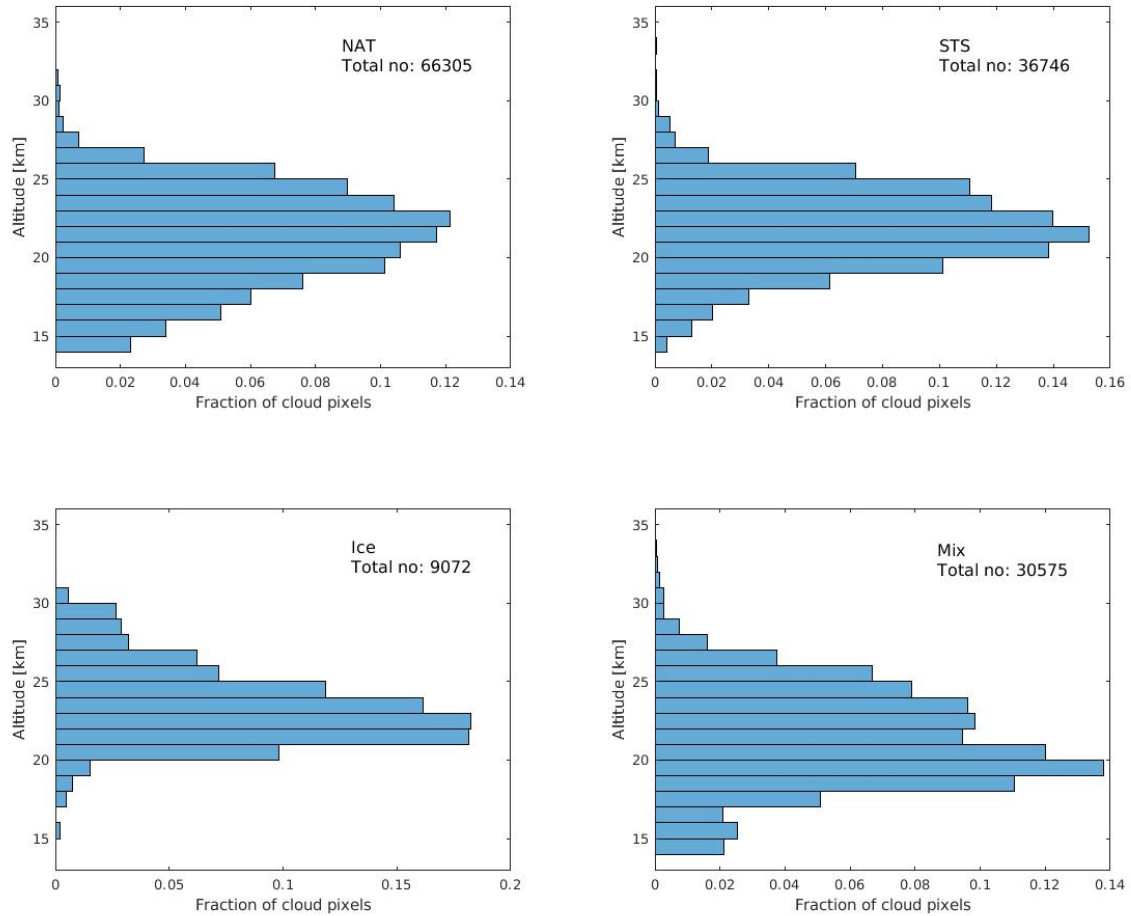
**Figure 4.** Height distribution of the relative fraction of detected PSCs. The total number of cloud pixels that are included is shown in the top right corner of the figure.

of waves in northern Scandinavia and how they affect the atmosphere, in particular, the formation of PSCs (see e.g. Tsias et al. (1999) and Dörnbrack et al. (2002)). For such waves to be propagating from the lower troposphere up to the stratosphere certain meteorological conditions need to be fulfilled. Dörnbrack et al. (2001) summarised them as follows:

1. The horizontal wind speed at 900 hPa has to be larger than a threshold value:  $v_{hor}(900hPa) > v_{crit}$ .
2. The direction of the horizontal wind at 900 hPa,  $\alpha_{hor}(900hPa)$ , must be approximately perpendicular to the mountain ridge:  $\alpha_{mnt} - \Delta\alpha < \alpha_{hor}(900hPa) < \alpha_{mnt} + \Delta\alpha$ .
3. The wind direction at higher altitudes (pressure levels) doesn't differ much from that at 900 hPa:  $\Delta\alpha(p) = \alpha_{hor}(p) - \alpha_{hor}(900hPa)$  with  $p = 500, 300, 100, 50$  hPa.

In the case of the Scandinavian mountain range the orientation of the ridge in northern Scandinavia is from NNE to SSW at an angle of about  $30^\circ$  clockwise to the direct north. Hence, the wind direction perpendicular to the mountain range is  $\alpha_{mnt} = 300^\circ$ . However, since the mountain range is not perfectly aligned even wind directions that are off the nominal normal by a certain angle  $\alpha_{hor} - \Delta\alpha$  can still lead to lee waves. We set the thresholds to  $\Delta\alpha = 45^\circ$  and  $v_{crit} = 10m/s$ , the same value as suggested by Dörnbrack et al. (2001).

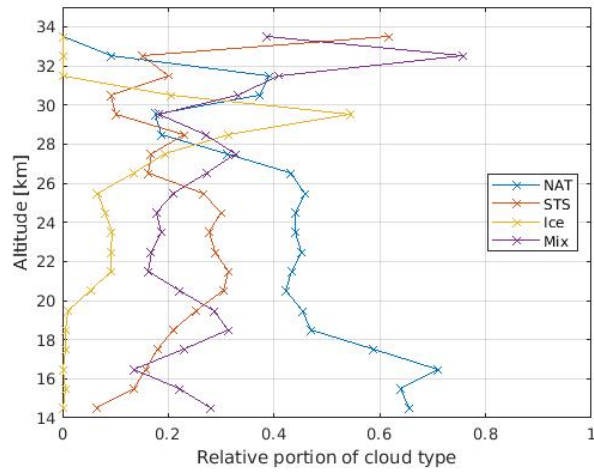
Wind data were ~~obtained from ECMWF's~~ extracted from the ERA5 dataset. Generally it is assumed that ERA5 data represents the observed atmosphere very well (Graham et al., 2019; Hersbach et al., 2018; Hersbach et al., 2018; Sivan et al., 2021). However, it should be noted that, for the stratosphere, the fit of ERA5 data to observations tend to be slightly worse than for the predecessor ERA-Interim (Hersbach et al., 2020). Comparisons for the Arctic troposphere on the other hand showed a better fit of ERA5 than for other global reanalyses (Graham et al., 2019). The horizontal resolution of ERA5 (appr. 30km)



**Figure 5.** Same as Figure 4 but for the four types of our PSC classification scheme separately.

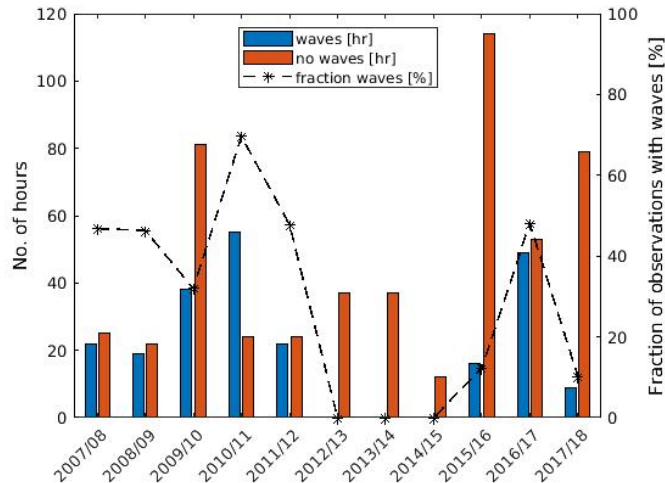
permits the proper representation of synoptic-scale winds but is too coarse to resolve small-scale disturbances. Yet, for verifying that atmospheric conditions allowed for mountain lee waves both to be generated and to propagate vertically, examining the synoptic wind field is sufficient.

305 A combination of all three criteria was applied to identify PSC measurements that were influenced by mountain lee waves. Figure 7 shows the year-to-year distribution of observation hours, divided into those with conditions that allowed mountain lee waves to propagate to the stratosphere and those that did not. Accumulated over the whole period, 230 hours of measurements were with mountain lee waves present, whereas 508 hours were without such waves. However, ~~there is a strong interannual variability, both in total~~ the interannual variability is large, both regarding the total numbers of days and hours with measure-



**Figure 6.** Relative portions of PSC types NAT, STS and Ice as function of altitude. 'Mix' refers to PSCs with optical characteristics that don't fit any of the above three types.

310 ments and the portion of them the measurements that were influenced by waves. The latter varied between 0 and 70% which can be attributed to the fact that the year-to-year variations of the troposphere result in wintertime polar troposphere. The result of these variations is that the chances for conditions to develop that are favourable for gravity waves wave propagation differ largely over the years, as well. Reasons for the variation of the total observation time were discussed further above.



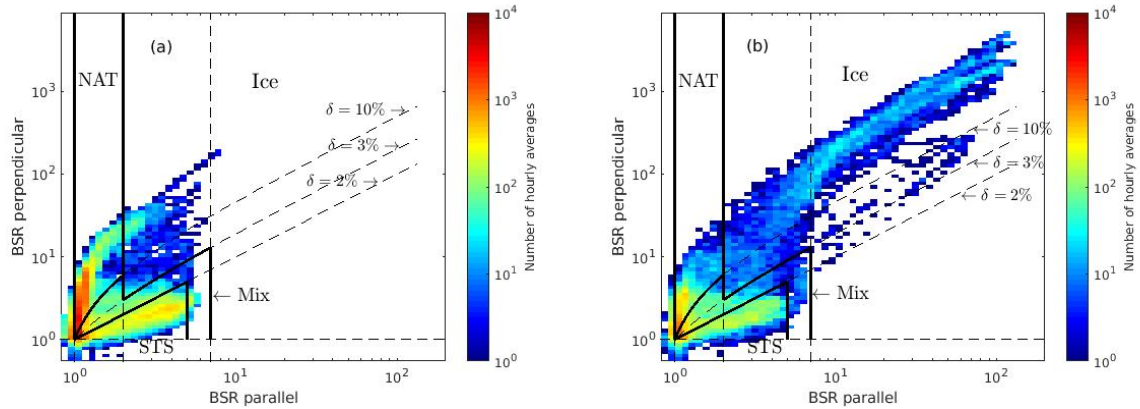
**Figure 7.** Annual statistic of hours of measurements with the IRF lidar. Blue bars mark times with conditions favourable for mountain lee waves based on criteria established by Dörnbrack et al. (2001), red bars are all other instances.

It has to be noted that inertia gravity waves can also be ~~due to reasons generated by sources~~ other than topography, such as  
315 wind shears and wind jets which ~~are again can be~~ caused by tropospheric pressure systems and the polar jet stream. Just as  
mountain lee waves, the temperature perturbations that ~~they trigger are triggered by these waves~~ can contribute to the modifica-  
tion or formation of PSCs (Hitchman et al., 2003; Shibata et al., 2003). However, the sources for these waves are not specific  
for our location but can also be found in ~~most~~ other parts of the polar regions, ~~as well~~. Therefore, the impact of non-orographic  
waves is not ~~a~~ subject of this study.

320 The separation of wave and ~~nonwave-no-wave~~ cases leads to two very different distributions of observed backscatter ratios, ~~as~~  
~~shown in Figure 8~~. A significant portion of ~~PSC~~ observations during wave conditions ~~had a combination of were characterised~~  
~~by a~~ large numbers of backscatter ratios for both states of polarisation, a manifestation of the presence of ice particles (Figure  
8b). Such observations were absent for measurements that were not influenced by mountain lee waves (Figure 8a). Apparently,  
the presence of waves was a precondition for the formation of ~~PSCs that yield such backscatter ratios the vast majority of ice~~  
325 ~~PSCs~~ at our location in northern Scandinavia. ~~Visualising~~ ~~On the other hand, observations of PSCs containing NAT were less~~  
~~frequent in wave conditions. This becomes even more obvious when visualising~~ the portions of different PSC types as a pie  
chart for conditions with and without mountain lee waves separately ~~confirms that~~. ~~Apparently, the~~ relative occurrences of ~~these~~  
~~PSC~~ types are notably different for ~~both-atmospheric-wave and no-wave~~ conditions (Figure 9). In the case of no waves present  
~~type-Ia-clouds-NAT~~ made up the majority of all ~~PSC~~ measurements (53%), while ~~type-II-ice~~ was rarely observed (3%). This  
330 agrees well with findings by Pitts et al. (2018) for the whole set of CALIPSO measurements of the Arctic region for an 11-year  
period. On the other hand, when conditions for mountain lee waves were favourable, ~~type-Ia, Ib-NAT, STS,~~ and mixed clouds  
were observed at approximately the same frequency. ~~Type-II-clouds were more common and (27–30% each). Ice clouds~~ stood  
for about 1/6 off all measurements. ~~Hence, mountain lee waves can locally cause very different distribution of cloud types. A~~  
~~consequence is that ozone chemistry is affected by PSCs in regionally different ways. An investigation of such effects, however,~~  
335 ~~is beyond the scope of this study. NAT PSCs were relatively less common, ice and mixed PSCs on the other hand relatively~~  
~~more frequent under wave conditions.~~

Another ~~consequence~~ ~~distinct effect~~ of the influence of mountain lee waves is a change of the altitude of PSCs. Figure 10  
shows the altitude distributions of observed clouds, separated for cases with influence of mountain lee waves (right panel) and  
without (left panel). Apparently, in the presence of mountain lee waves, the ~~maximum number of the cloud mean height of our~~  
340 ~~PSC~~ observations was moved to larger heights by ~~appr. 2 to 3 km km (see Table 4)~~. Cloud bottoms and tops show a similar  
change, indicating that cloud layers as a whole shifted to larger heights. ~~An explanation for this characteristic is that the lifting~~  
~~of air parcels due to the vertical motion in the wave results in adiabatic cooling which leads to cloud formation around the wave~~  
~~crest. A similar process as can be observed for tropospheric clouds when they are modulated by gravity waves.~~

~~In the same way as for the total data set before, height distributions can be compiled broken down by PSC type. This is~~  
345 ~~shown in Figure 11 for measurements when no waves were present and in Figure 12 with mountain lee waves apparent. The~~  
~~corresponding mean and median heights and the widths of the height distributions are summarised in Table 4. For both NAT~~  
~~and STS PSCs the mean heights during wave conditions were appr. 0.5 km larger than without waves present. In contrast, for~~  
~~ice and mixed PSCs the mean heights were appr. 2 km larger when waves were present. For all PSC types, except ice, the~~



**Figure 8.** Frequency of backscatter ratios of parallel versus perpendicular channel for PSC observations (a) in the absence of mountain lee waves and (b) when waves could propagate to the stratosphere.

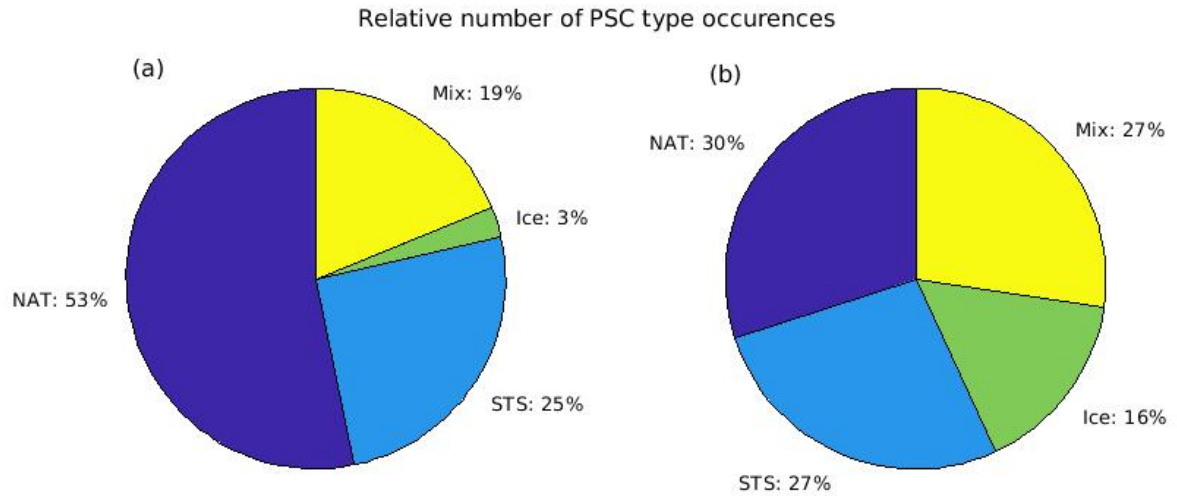
height distributions were wider in conditions without waves. Here the explanation is that with no wave influence a considerable number of PSCs were at heights below 20 km while such observations were much less frequent when PSCs were influenced by mountain lee waves. A peculiar characteristic of the height distribution during wave conditions for mixed PSCs, and to a much smaller extent also for NAT PSCs, is that it contains two maxima, one near 24 km and a second below 20 km. The minimum between both maxima is located at approximately the same height as the maximum of the distribution for ice PSCs, at 22–23 km. This suggests a connection between both features. The underlying reason is found in the different existence temperatures of the PSC types. Ice PSCs require the lowest temperatures while other types can exist in warmer air. Hence, ice PSCs are frequently found surrounded by other types of PSCs (see e.g. Dörnbrack et al., 2002; Shibata et al., 2003; Achtert and Tesche, 2014; Pitts et al., 2018).

	all		NAT		STS		Ice		Mix	
	nw	wa	nw	wa	nw	wa	nw	wa	nw	wa
$\mu$ [km]	20.93	22.82	22.66	23.12	21.64	22.15	22.09	23.95	20.57	22.52
$Me$ [km]	21.07	22.87	20.86	23.59	21.82	21.76	22.00	23.41	20.41	22.75
$\sigma$ [km]	3.02	2.63	3.08	2.52	2.76	2.18	1.82	2.44	3.12	2.97

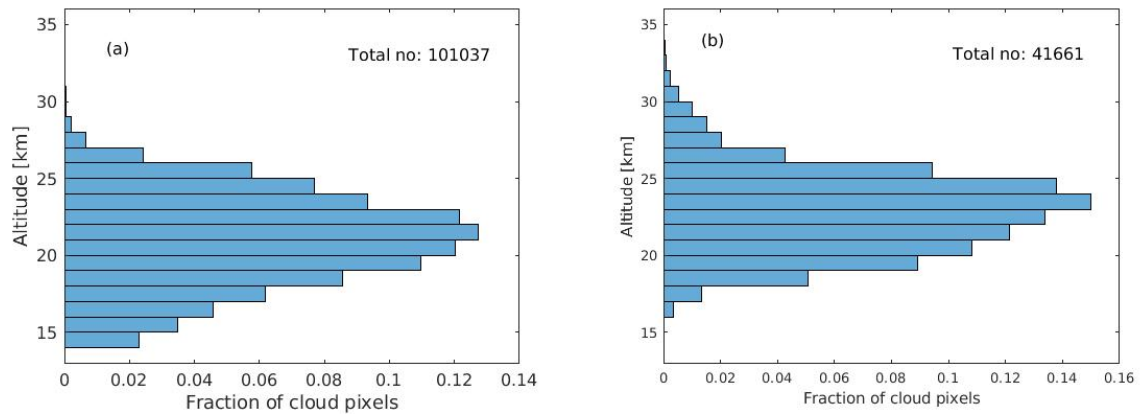
**Table 4.** Same as Table 3 but separated for measurements with mountain-wave conditions (wa) and without (nw).

The polar stratosphere has been cooling over the last decades which, based on simulations with global circulation models, is expected to continue in the foreseeable future (Fleming et al., 2011). This, in turn, will result in an increase of PSC occurrences (Rex et al., 2004; von der Gathen et al., 2021). The period of measurements that is discussed here is however too short to deduce any statistically significant trend over time. Comparison of PSC characteristics for both types of conditions that were





**Figure 9.** Relative distribution of PSC observations (a) in the absence of mountain lee waves and (b) when waves could propagate to the stratosphere (right).



**Figure 10.** Height distribution of PSC observations (a) in the absence of mountain lee waves and (b) when waves could propagate to the stratosphere.

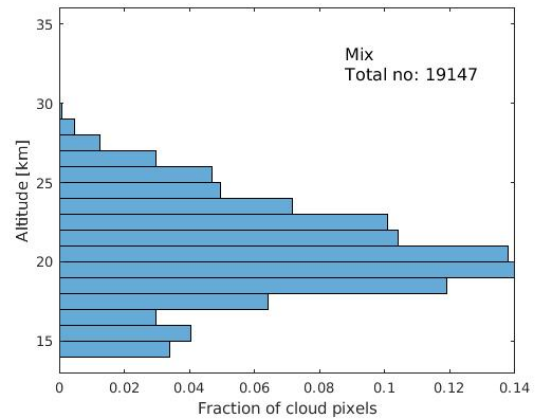
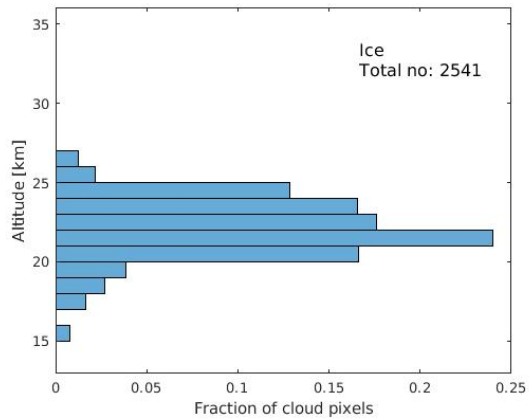
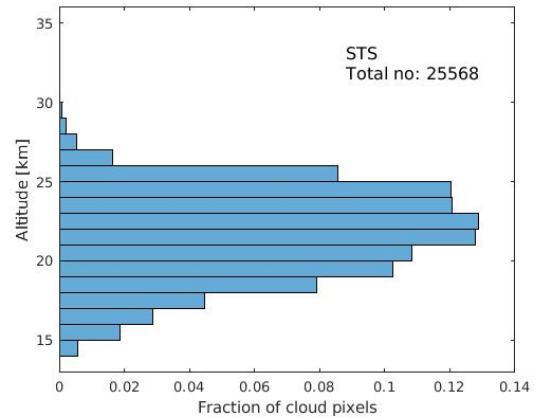
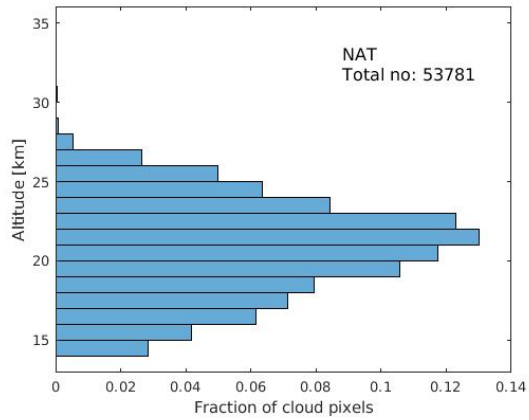
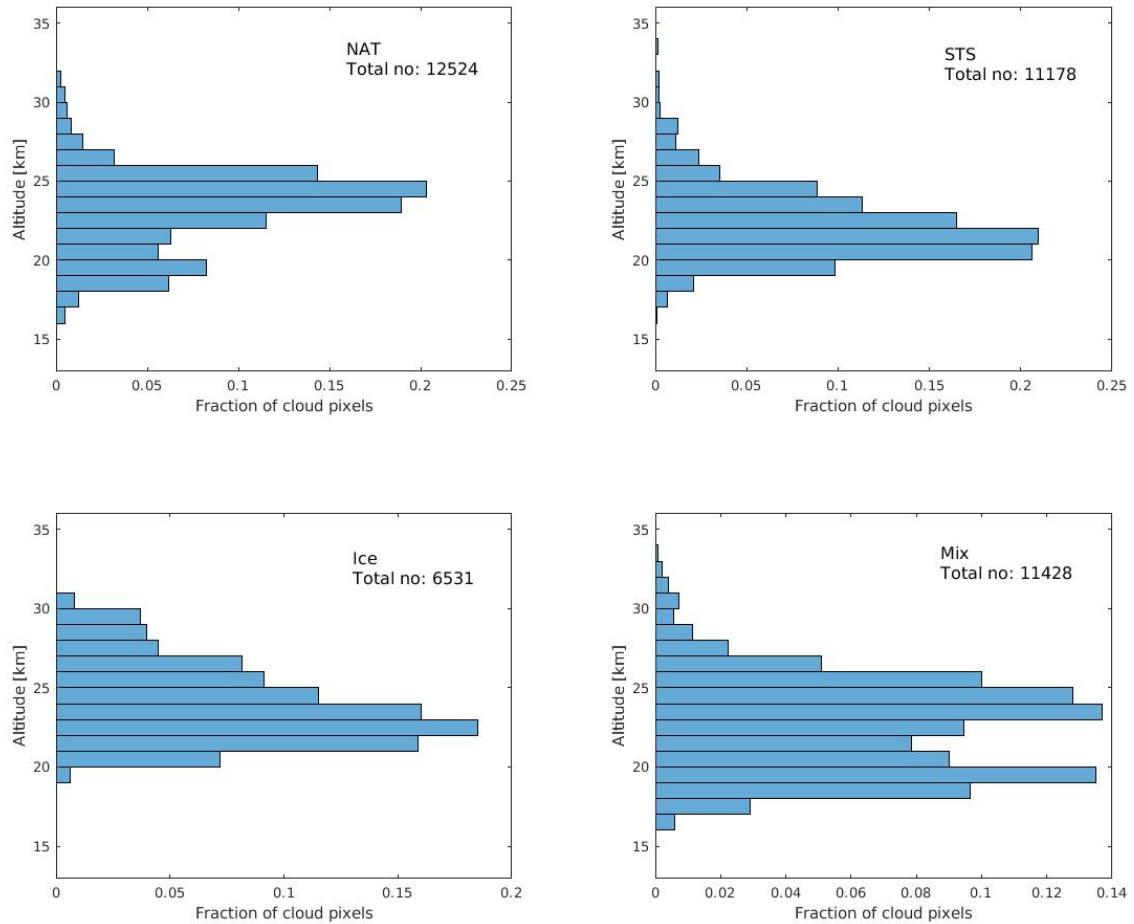


Figure 11. Height distribution of detected PSCs for the four types of our classification scheme in the absence of mountain lee waves.



**Figure 12.** Height distribution of detected PSCs for the four types of our classification scheme when mountain lee waves could propagate to the stratosphere.

365 derived from our data shows that mountain lee waves, on average produce a very different frequency of occurrence of PSC types. Our results focus on the local affect that such waves have on PSCs. Previous studies by others, relying on data from various campaigns, discussed cases that demonstrated that the effect of mountain lee waves on the chemical and physical characteristics of a PSC is not restricted to the vicinity of the mountain ridge but continues further downstream (e.g. Murphy and Gary, 1995; Riviere et al., 2000; Voigt et al., 2000; Dörnbrack et al., 2002). Ice particles that can form due to adiabatic cooling that comes with the vertical motion due mountain gravity waves were found to act as seeds for NAT particles downstream (Fueglistaler et al., 2003; Eckermann et al., 2009; Alexander et al., 2011). Denitrification that is associated with the formation of NAT particles influences the ozone chemistry (Carslaw et al., 1998b). Hence, a local source of PSCs can affect the stratosphere on a regional scale. An investigation of such effects, however, is beyond the scope of this study.

370 Data spanning several years or longer can, in principle, allow the identification of a long-term trend if that trend is distinguishable from underlying variability of the data, i.e. if it has statistical significance. In our data set, however, interannual variations of PSC characteristics are too large to identify any trend.

#### 4 Summary

375 Measurements of PSCs with a backscatter lidar in Kiruna, northern Sweden, were analysed. The data comprises 11 winter seasons, a period sufficiently long to allow for a statistical analysis. Nearly half of all observed clouds consisted of NAT particles while ice clouds were only a small fraction, STS and a mixture of different components making up the rest. The most common altitude for observed PSCs was around 22 km. Those results are in agreement with findings by Pitts et al. (2018) and Blum et al. (2005). When separating lidar observations that were influenced by mountain lee waves and those without such waves present, clearly distinct characteristics become apparent. Ice PSCs (~~type-II~~) were about 5 times as frequent ~~during wave~~ when such waves were present compared to no-wave conditions. On the other hand, NAT ~~clouds (type-Ia) PSCs~~ were about half as frequent under wave conditions than without mountain lee waves being present. Observed PSCs were, on average, at 2 km higher altitudes when under the influence of mountain lee waves.

385 *Data availability.* Lidar data is available from the authors on request. ERA5 datasets can be obtained by approved users from ECMWF (<http://www.ecmwf.int>).

*Author contributions.* PV and PD performed lidar observations and inverted measurement data. PV did the statistical analysis. PV prepared the manuscript with contributions from PD.

*Competing interests.* The authors declare that they have no conflict of interest.

*Acknowledgements.* We thank the Danish Meteorological Institute for providing PSC and vortex forecasts. We ~~greatfully~~gratefully acknowledge Daria Mikhaylova (IRF) for invaluable help with lidar operations and Oliver Willbrink (Luleå University of Technology, Sweden) for an initial assessment of lidar observation data. We also thank Ronny Engelmann (Leibniz Institute for Tropospheric Research, Germany) for kindly providing instrumentation for testing receiver channel performance. We are grateful to Farah Khosrawi and a second, anonymous reviewer for helpful comments and suggestions.

## References

- 395 Achtert, P. and Tesche, M.: Assessing lidar-based classification schemes for polar stratospheric clouds based on 16 years of measurements at Esrange, Sweden, *J. Geophys. Res.*, 119, 1386–1405, <https://doi.org/10.1002/2013JD020355>, 2014.
- Adriani, A., Massoli, P., Donfrancesco, G. D., Cairo, F., Moriconi, M. L., and Snels, M.: Climatology of polar stratospheric clouds based on lidar observations from 1993 to 2001 over McMurdo Station, Antarctica, *J. Geophys. Res.*, 109, D24 211–1–D24 211–17, <https://doi.org/10.1029/2004JD004800>, 2004.
- 400 Alexander, A. P., Klekociuk, A. R., Pitts, M. C., and McDonald, A. J.: The effect of orographic gravity waves on Antarctic polar stratospheric cloud occurrence and composition, *J. Geophys. Res.*, 116, D06 109, <https://doi.org/10.1029/2010JD015184>, 2011.
- Alexander, S. P., Klekociuk, A. R., McDonald, A. J., and Pitts, M. C.: Quantifying the role of orographic gravity waves on polar stratospheric cloud occurrence in the Antarctic and the Arctic, *J. Geophys. Res.*, 118, 11 493–11 507, <https://doi.org/10.1002/2013JD020122>, 2013.
- Biele, J., Tsias, A., Luo, B. P., Carslaw, K. S., Neuber, R., Beyerle, G., and Peter, T.: Nonequilibrium coexistence of solid and liquid particles in Arctic stratospheric clouds, *J. Geophys. Res.*, 106, 22 991–23 007, <https://doi.org/10.1029/2001JD900188>, 2001.
- 405 Blum, U., Fricke, K. H., Müller, K. P., Siebert, J., and Baumgarten, G.: Long-term lidar observations of polar stratospheric clouds at Esrange in northern Sweden, *Tellus B*, 57, 412–422, <https://doi.org/10.3402/tellusb.v57i5.16562>, 2005.
- Browell, E. V., Butler, C. F., Ismail, S., Robinette, P. A., Carter, A. F., Higdon, N. S., Toon, O. B., Schoeberl, M. R., and Tuck, A. F.: Airborne lidar observations in the wintertime arctic stratosphere: polar stratospheric clouds, *Geophys. Res. Lett.*, 17, 385–388, <https://doi.org/10.1029/GL017i004p00385>, 1990.
- 410 Carslaw, K. S., Clegg, S. L., and Brimblecombe, P.: A Thermodynamic Model of the System HCl-HNO<sub>3</sub>-H<sub>2</sub>SO<sub>4</sub>-H<sub>2</sub>O, Including Solubilities of HBr, from <200 to 328 K, *J. Phys. Chem.*, 99, 11 557–11 574, <https://doi.org/10.1021/j100029a039>, 1995.
- Carslaw, K. S., Wirth, M., Tsias, A., Luo, B. P., Dörnbrack, A., Leutbecher, M., Volkert, H., Renger, W., Bacmeister, J. T., and Peter, T.: Particle microphysics and chemistry in remotely observed mountain polar stratospheric clouds, *J. Geophys. Res.*, 103, 5785–5796, <https://doi.org/10.1029/97JD03626>, 1998a.
- 415 Carslaw, K. S., Wirth, M., Tsias, A., Luo, B. P., Dörnbrack, A., Leutbecher, M., Volkert, H., Renger, W., Bacmeister, J. T., Reimer, E., and Peter, T.: Increased stratospheric ozone depletion due to mountain-induced atmospheric waves, *Nature*, 391, 675–678, <https://doi.org/10.1038/35589>, 1998b.
- Carslaw, K. S., Peter, T., Bacmeister, J. T., and Eckermann, S. D.: Widespread solid particle formation by mountain waves in the Arctic stratosphere, *J. Geophys. Res.*, 104, 1827–1836, <https://doi.org/10.1029/1998JD100033>, 1999.
- 420 Dörnbrack, A., Leutbecher, M., Volkert, H., and Wirth, M.: Mesoscale forecasts of stratospheric mountain waves, *Meteorol. Appl.*, 5, 117–126, <https://doi.org/10.1017/S1350482798000802>, 1997.
- Dörnbrack, A., Leutbecher, M., Reichardt, J., Behrendt, A., Müller, K.-P., and Baumgarten, G.: Relevance of mountain wave cooling for the formation of polar stratospheric clouds over Scandinavia: Mesoscale dynamics and observations for January 1997, *J. Geophys. Res.*, 106, 1569–1581, <https://doi.org/10.1029/2000JD900194>, 2001.
- 425 Dörnbrack, A., Birner, T., Fix, A., Flentje, H., Meister, A., Schmid, H., Browell, E. V., and Mahoney, M. J.: Evidence for inertia gravity waves forming polar stratospheric clouds over Scandinavia, *J. Geophys. Res.*, 107, SOL30, <https://doi.org/10.1029/2001JD000452>, 2002.
- Dörnbrack, A., Pitts, M. C., Poole, L. R., Orsolini, Y. J., Nishii, K., and Nakamura, H.: The 2009–2010 Arctic stratospheric winter – general evolution, mountain waves and predictability of an operational weather forecast model, *Atm. Chem. Phys.*, 12, 3659–3675, <https://doi.org/10.5194/acp-12-3659-2012>, 2012.
- 430

- Eckermann, S. D., Hoffmann, L., Höpfner, M., Wu, D. L., and Alexander, M. J.: Antarctic NAT PSC belt of June 2003: Observational validation of the mountain wave seeding hypothesis, *Geophys. Res. Lett.*, 36, L02 807, <https://doi.org/10.1029/2008GL036629>, 2009.
- Fleming, E. L., Jackman, C. H., Stolarski, R. S., and Douglass, A. R.: A model study of the impact of source gas changes on the stratosphere for 1850–2100, *Atm. Chem. Phys.*, 11, 8515–8541, <https://doi.org/10.5194/acp-11-8515-2011>, 2011.
- 435 Fritts, D. C. and Alexander, M. J.: Gravity wave dynamics and effects in the middle atmosphere, *Rev. Geophys.*, 41, 1003, <https://doi.org/10.1029/2001RG000106>, 2003.
- Fueglistaler, S., Buss, S., Luo, B. P., Wernli, H., Flentje, H., Hostetler, C. A., Poole, L. R., Carslaw, K. S., and Peter, T.: Detailed modeling of mountain wave PSCs, *Atm. Chem. Phys.*, 3, 697–712, <https://doi.org/10.5194/acp-3-697-2003>, 2003.
- Graham, R. M., Hudson, S. R., and Maturilli, M.: Improved performance of ERA5 in Arctic gateway relative to four global atmospheric reanalyses, *Geophys. Res. Lett.*, 46, 6138–6147, <https://doi.org/10.1029/2019GL082781>, 2019.
- 440 Hanson, D. and Mauersberger, K.: Laboratory studies of the nitric acid trihydrate: Implications for the south polar stratosphere, *Geophys. Res. Lett.*, 15, 855–858, <https://doi.org/10.1029/GL015i008p00855>, 1988.
- Hersbach, H., Bell, B., Berrisford, P., Hirahara, S., Horányi, A., Muñoz-Sabater, J., Nicolas, J., Peubey, C., Radu, R., Schepers, D., Simmons, A., Soci, C., Abdalla, S., Abellan, X., Balsamo, G., Bechtold, P., Biavati, G., Bidlot, J., Bonavita, M., de Chiara, G., Dahlgren, P., Dee, D., Diamantakis, M., Dragani, R., Flemming, J., Forbes, R., Fuentes, M., Geer, A., Healy, L. H. S., Hogan, R. J., Hólm, E., Janisková, M., Keeley, S., Laloyaux, P., Lopez, P., Lupu, C., Radnoti, G., de Rosnay, P., Rozum, I., Vamborg, F., Villaume, S., and Thépaut, J.-N.: Complete ERA5 from 1979: Fifth generation of ECMWF atmospheric reanalyses of the global climate, available from the Copernicus Climate Change Service (C3S) Data Store (CDS), 2017.
- 445 Hersbach, H., de Rosnay, P., Bell, B., Schepers, D., Simmons, A., Soci, C., Abdalla, S., Alonso-Balmaseda, M., Balsamo, G., Bechtold, P., Berrisford, P., Bidlot, J.-R., de Boissésón, E., Bonavita, M., Browne, P., Buizza, R., Dahlgren, P., Dee, D., Dragani, R., Diamantakis, M., Flemming, J., Forbes, R., Forbes, R., Geer, A., Haiden, T., Hólm, E., Haimberger, L., Hogan, R., Horányi, A., Janiskova, M., Laloyaux, P., Lopez, P., Muñoz-Sabater, J., Peubey, C., Radu, R., Richardson, D., Thépaut, J.-N., Vitart, F., Yang, X., Zsótér, E., and Zuo, H.: Operational global reanalysis: progress, future directions and synergies with NWP, *Tech. Rep. 27*, ECMWF, <https://doi.org/10.21957/tkic6g3wm>, 2018.
- 455 Hersbach, H., Bell, B., Berrisford, P., Hirahara, S., Horányi, A., Muñoz-Sabater, J., Nicolas, J., Peubey, C., Radu, R., Schepers, D., Simmons, A., Soci, C., Abdalla, S., Abellan, X., Balsamo, G., Bechtold, P., Biavati, G., Bidlot, J., Bonavita, M., Chiara, G. D., Dahlgren, P., Dee, D., Diamantakis, M., Dragani, R., Flemming, J., Forbes, R., Fuentes, M., Geer, A., Haimberger, L., Healy, S., Hogan, R. J., Hólm, E., Janisková, M., Keeley, S., Laloyaux, P., Lopez, P., Vamborg, C., Villaume, S., and Thépaut, J.-N.: The ERA5 global reanalysis, *Quart. J. Roy. Meteorol. Soc.*, 146, 1999–2049, <https://doi.org/10.1002/qj.3803>, 2020.
- Hitchman, M. H., Buker, M. L., Tripoli, G. J., Browell, E. V., Grant, W. B., McGee, T. J., and Burris, J. F.: Nonorographic generation of Arctic polar stratospheric clouds during December 1999, *J. Geophys. Res.*, 108, 8325, <https://doi.org/10.29/2001JD001034>, 2003.
- 460 Hoffmann, L., Spang, R., Orr, A., Alexander, M. J., Holt, L. A., and Stein, O.: A decadal satellite record of gravity wave activity in the lower stratosphere to study polar stratospheric cloud formation, *Atm. Chem. Phys.*, 17, 2901–2920, <https://doi.org/10.5194/acp-17-2901-2017>, 2017.
- Hoyle, C. R., Engel, I., Luo, B. P., Pitts, M. C., Poole, L. R., Groß, J.-U., and Peter, T.: Heterogeneous formation of polar stratospheric clouds – Part 1: Nucleation of nitric acid trihydrate (NAT), *Atm. Chem. Phys.*, 13, 9577–9595, <https://doi.org/10.5194/acp-13-9577-2013>, 2013.
- 465 Khosrawi, F., Kirner, O., Sinnhuber, B.-J., Johansson, S., Höpfner, M., Santee, M. L., Froideveaux, L., Ungermann, J., Ruhnke, R., Woiwode, W., Oelhaf, H., and Braesicke, P.: Denitrification, dehydration and ozone loss during the 2015/2016 Arctic winter, *Atm. Chem. Phys.*, 17, 12 893–12 910, <https://doi.org/10.5194/acp-17-12893-2017>, 2017.

- Kirner, O., Müller, R., Ruhnke, R., and Fischer, H.: Contribution of liquid, NAT and ice particles to chlorine activation and ozone depletion  
470 in Antarctic winter and spring, *Atm. Chem. Phys.*, 15, 2019–2030, <https://doi.org/10.5194/acp-15-2019-2015>, 2015.
- Kohma, M. and Sato, K.: The effects of atmospheric waves on the amount of polar stratospheric clouds, *Atm. Chem. Phys.*, 11, 11 535–  
11 552, <https://doi.org/10.5194/acp-11-11535-2011>, 2011.
- Lawrence, Z. D. and Manney, G. L.: Characterizing stratospheric polar vortex variability with computer vision technique, *J. Geophys. Res.*,  
123, 1510–1535, <https://doi.org/10.1002/2017JD027556>, 2018.
- 475 Lowe, D. and MacKenzie, A. R.: Polar stratospheric cloud microphysics and chemistry, *J. Atmos. Solar-Terr. Phys.*, 70, 13–40,  
<https://doi.org/10.1016/j.jastp.2007.09.011>, 2008.
- Lowe, D., MacKenzie, A. R., Schlager, H., Voigt, C., Dörnbrack, A., Mahoney, M. J., and Cairo, F.: Liquid particle composition and hetero-  
geneous reactions in a mountain wave Polar Stratospheric Cloud, *Atm. Chem. Phys.*, 6, 3611–3623, <https://doi.org/10.5194/acp-6-3611-2006>, 2006.
- 480 Manney, G. L. and Lawrence, Z. D.: The major stratospheric final warming in 2016: dispersal of vortex air and termination of Arctic chemical  
ozone loss, *Atm. Chem. Phys.*, 16, 15 371–15 396, <https://doi.org/10.5194/acp-16-15371-2016>, 2016.
- Massoli, P., Maturilli, M., and Neuber, R.: Climatology of Arctic polar stratospheric clouds as measured by lidar in Ny-Ålesund, Spitsbergen  
(79°N, 12°E), *J. Geophys. Res.*, 111, D09 206, <https://doi.org/10.1029/2005JD005840>, 2006.
- Matthias, V., Dörnbrack, A., and Stober, G.: The extraordinarily strong and cold polar vortex in the early northern winter 2015/2016, *Geophys.*  
485 *Res. Lett.*, 43, 12 287–12 294, <https://doi.org/10.1002/2016GL071676>, 2016.
- Mattis, I., Tesche, M., Grein, M., Freudenthaler, V., and Müller, D.: Systematic error of lidar profiles caused by a polarization-dependent  
receiver transmission: quantification and error correction scheme, *Appl. Opt.*, 48, 2742–2751, <https://doi.org/10.1364/AO.48.002742>,  
2009.
- Molleker, S., Borrmann, S., Schlager, H., Luo, B., Frey, W., Klingebiel, M., Weigel, R., Ebert, M., Mitev, V., Matthey, R., Woiwode, W.,  
490 Oelhaf, H., Dörnbrack, A., Stratmann, G., Groß, J.-U., Günther, G., Vogel, B., Müller, R., Krämer, M., Meyer, J., and Cairo, F.: Micro-  
physical properties of synoptic-scale polar stratospheric clouds: in situ measurements of unexpectedly large HNO<sub>3</sub>-containing particles in  
the Arctic vortex, *Atm. Chem. Phys.*, 14, 10 785–10 801, <https://doi.org/10.5194/acp-14-10785-2014>, 2014.
- Murphy, D. M. and Gary, B. L.: Mesoscale temperature fluctuations and polar stratospheric clouds, *J. Atmos. Sci.*, 52, 1753–1760,  
[https://doi.org/10.1175/1520-0469\(1995\)052<1753:MTFAPS>2.0.CO;2](https://doi.org/10.1175/1520-0469(1995)052<1753:MTFAPS>2.0.CO;2), 1995.
- 495 Pitts, M. C., Poole, L. R., and Thomason, L. W.: CALIPSO polar stratospheric cloud observations: second-generation detection algorithm  
and composition discrimination, *Atm. Chem. Phys.*, 9, 7577–7589, <https://doi.org/10.5194/acp-9-7577-2009>, 2009.
- Pitts, M. C., Poole, L. R., Dörnbrack, A., and Thomason, L. W.: The 2009–2010 Arctic polar stratospheric cloud season: a CALIPSO  
perspective, *Atm. Chem. Phys.*, 11, 2161–2177, <https://doi.org/10.5194/acp-11-2161-2011>, 2011.
- Pitts, M. C., Poole, L. R., Lambert, A., and Thomason, L. W.: An assessment of CALIOP polar stratospheric cloud composition, *Atm. Chem.*  
500 *Phys.*, 13, 2975–2988, <https://doi.org/10.5194/acp-13-2975-2013>, 2013.
- Pitts, M. C., Poole, L. R., and Gonzalez, R.: Polar stratospheric cloud climatology based on CALIPSO spaceborne lidar measurements from  
2006 to 2017, *Atm. Chem. Phys.*, 18, 10 881–10 913, <https://doi.org/10.5194/acp-18-10881-2018>, 2018.
- Poole, L. R. and Pitts, M. C.: Polar stratospheric cloud climatology based on Stratospheric Aerosol Measurement II observations from 1978  
to 1989, *J. Geophys. Res.*, 99, 13 083–13 089, <https://doi.org/10.1029/94JD00411>, 1994.
- 505 Rao, T. N., Arvelius, J., and Kirkwood, S.: Climatology of tropopause folds over a European Arctic station (Esrangle), *J. Geophys. Res.*, 113,  
D00B03, <https://doi.org/10.1029/2007JD009638>, 2008.



- Rex, M., Salawitch, R. J., von der Gathen, P., Harris, N. R. P., Chipperfield, M. P., and Naujokat, B.: Arctic ozone loss and climate change, *Geophys. Res. Lett.*, 31, L04 116, <https://doi.org/10.1029/2003GL018844>, 2004.
- Riviere, E., Huret, N., G.-Taupin, F., Renard, J.-B., Pirre, M., Eckermann, S. D., Larsen, N., Deshler, T., and Camy-Peyret, L. L. S. P. C.: Role  
510 of lee waves in the formation of solid polar stratospheric clouds: Case studies from February 1997, *J. Geophys. Res.*, 105, 6845–6853, <https://doi.org/10.1029/1999JD900908>, 2000.
- Santacesaria, V., McKenzie, A. R., and Stefanutti, L.: A climatological study of polar stratospheric clouds (1989–1997) from LIDAR measurements over Dumont d’Urville (Antarctica), *Tellus B*, 53B, 306–321, <https://doi.org/10.1034/j.1600-0889.2001.01155.x>, 2001.
- Shibata, T., Sato, K., Kobayashi, H., Yabuki, M., and Shiobara, M.: Antarctic polar stratospheric clouds under temperature pertur-  
515 bation by nonorographic inertia gravity waves observed by micropulse lidar at Syowa Station, *J. Geophys. Res.*, 108, ACC 6, <https://doi.org/10.1029/2002JD002713>, 2003.
- Sivan, C., Rakesh, V., Abhilash, S., and Mohanakumar, K.: Evaluation of global reanalysis winds and high-resolution regional model outputs with the 205 MHz stratosphere-troposphere wind profiler radar observations, *Quart. J. Roy. Meteorol. Soc.*, 147, 2562–2579, <https://doi.org/10.1002/qj.4041>, 2021.
- 520 Solomon, S.: Stratospheric ozone depletion: a review of concepts and history, *Rev. Geophys.*, 37, 275–316, <https://doi.org/10.1029/1999RG900008>, 1999.
- Spang, R., Hoffmann, L., Müller, R., Groß, J.-U., Tritscher, I., Höpfner, M., Pitts, M., Orr, A., and Riese, M.: A climatology of polar stratospheric cloud composition between 2002 and 2012 based on MIPAS/Envisat observations, *Atm. Chem. Phys.*, 18, 5089–5113, <https://doi.org/10.5194/acp-18-5089-2018>, 2018.
- 525 Stein, B., Wedekind, C., Wille, H., Immler, F., Müller, M., Wöste, L., del Guasta, M., Morandi, M., Stefanutti, L., Antonelli, A., Agostini, P., Rizi, V., Readelli, G., Mitev, V., Matthey, R., Kivi, R., and Kyrö, E.: Optical classification, existence temperature, and coexistence of different polar stratospheric cloud types, *J. Geophys. Res.*, 104, 23 983–23 993, <https://doi.org/10.1029/1999JD900064>, 1999.
- Tabazadeh, A. and Toon, O. B.: The presence of metastable HNO<sub>3</sub>/H<sub>2</sub>O solid phases in the stratosphere inferred from ER 2 data, *J. Geophys. Res.*, 101, 9071–9078, <https://doi.org/10.1029/96JD00062>, 1996.
- 530 Teitelbaum, H. and Sadourny, R.: The rôle of planetary waves in the formation of polar stratospheric clouds, *Tellus*, 50A, 302–312, <https://doi.org/10.3402/tellusa.v50i3.14528>, 1998.
- Tencé, F., Jumelet, J., Bouillon, M., Cugnet, D., Bekki, S., Safieddine, S., Keckhut, P., and Sarkissian, A.: 14 years of lidar measurements of Polar Stratospheric Clouds at the French Antarctic Station Dumont d’Urville, *ACPD*, 2022, 1–27, <https://doi.org/10.5194/acp-2022-401>, 2022.
- 535 Thomason, L. W., Pitts, M. C., and Winker, D. M.: CALIPSO observations of stratospheric aerosols: a preliminary assessment, *Atm. Chem. Phys.*, 7, 5283–5290, <https://doi.org/10.5194/acp-7-5283-2007>, 2007.
- Tritscher, I., Pitts, M. C., Poole, L. R., Alexander, S. P., Cairo, F., Chipperfield, M. P., Groß, J.-U., Höpfner, M., Lambert, A., Luo, B., Molleker, S., Orr, A., Salawitch, R., Snels, M., Spang, R., Woiwode, W., and Peter, T.: Polar stratospheric clouds: Satellite observations, processes, and role in ozone depletion, *Rev. Geophys.*, 59, 1–81, <https://doi.org/10.1029/2020RG000702>, 2021.
- 540 Tsias, A., Wirth, M., Carslaw, K. S., Biele, J., Mehrtens, H., Reichardt, J., Wedekind, C., Weiß, V., Renger, W., Neuber, R., von Zahn, U., Stein, B., Santacesaria, V., Stefanutti, L., Fierli, F., Bacmeister, J., and Peter, T.: Aircraft lidar observations of an enhanced type Ia polar stratospheric clouds during APE-POLECAT, *J. Geophys. Res.*, 104, 23 961–23 969, <https://doi.org/10.1029/1998JD100055>, 1999.
- Voelger, P. and Dalin, P.: A case study of a quasistationary, very long polar stratospheric cloud layer edge, *J. Meteorol. Soc. Japan*, 99, <https://doi.org/10.2151/jmsj.2021-025>, 2021.

- 545 Voelger, P. and Nikulin, G.: The new lidar system at the Swedish Institute of Space Physics in Kiruna: Description and first measurements, in: Proceedings of the 17th ESA Symposium on European Rocket and Balloon Programmes and Related research, vol. SP-590, pp. 321–326, 2005.
- Voigt, C., Schreiner, J., Kohlmann, A., Zink, P., Mauersberger, K., Larsen, N., Deshler, T., Kröger, C., Rosen, J., Adriani, A., Cairo, F., Di Donfrancesco, G., Viterbini, M., Ovarlez, J., Ovarlez, H., David, C., and Dörnbrack, A.: Nitric acid trihydrate (NAT) in polar stratospheric clouds, *Science*, pp. 1756–1758, <https://doi.org/10.1126/science.290.5497.1756>, 2000.
- 550 von der Gathen, P., Kivi, R., Wohltmann, I., Salawitch, R. J., and Rex, M.: Climate change favours large seasonal loss of Arctic ozone, *Nat. Commun.*, 12, <https://doi.org/10.1038/s41467-021-24089-6>, 2021.
- Wohltmann, I., von der Gathen, P., Lehmann, R., Maturilli, M., Deckelmann, H., Manney, G. L., Davies, J., Tarasick, D., Jepsen, N., Kivi, R., Lyall, N., and Rex, M.: Near-complete local reduction of Arctic stratospheric ozone by severe chemical Loss in Spring 2020, *Geophys. Res. Lett.*, 47, e2020GL089547, <https://doi.org/10.1029/2020GL089547>, 2020.
- 555