

Examining TROPOMI formaldehyde to nitrogen dioxide ratios in the Lake Michigan region: implications for ozone exceedances

J. Jerrold M. Acdan^{1*}, R. Bradley Pierce^{1,2}, Angela F. Dickens³, Zachariah Adelman³, Tsengel Nergui³

¹Department of Atmospheric and Oceanic Sciences, University of Wisconsin-Madison, Madison, WI, 53706, United States

5 ²Space Science and Engineering Center, University of Wisconsin-Madison, Madison, WI, 53706, United States

³Lake Michigan Air Directors Consortium (LADCO), Hillside, IL, 60162, United States

*Correspondence to: J. Jerrold M. Acdan (acdan@wisc.edu)

Abstract. Surface-level ozone (O_3) is a secondary air pollutant that has adverse effects on human health. In the troposphere, O_3 is produced in complex cycles of photochemical reactions involving nitrogen oxides (NO_x) and volatile organic compounds (VOCs). Determining if O_3 levels will be decreased by lowering NO_x emissions (“ NO_x -sensitive”), VOC emissions (“VOC-sensitive”), or both (“the transition zone”) can be done by using the formaldehyde (HCHO; a VOC species) to nitrogen dioxide (NO_2 ; a component of NO_x) concentration ratio (HCHO/ NO_2 ; “FNR”). Generally, lower FNR values indicate VOC sensitivity while higher values indicate NO_x sensitivity. In this study, we use 2019–2021 TROPospheric Monitoring Instrument (TROPOMI) satellite data over the Lake Michigan region to assess changes in O_3 precursor levels and the inferred O_3 chemistry sensitivity between: (1) O_3 season days and Chicago, Illinois, metropolitan area O_3 exceedance days, and (2) weekdays and weekends. Higher NO_2 vertical column densities (VCDs), HCHO VCDs, and FNR values are seen throughout the study domain on exceedance days, indicating generally more NO_x -sensitive O_3 chemistry. The largest change occurs in the areal extent of the transition zone, which decreases by 40 % during exceedance days. Major urban cores in the domain (e.g., Chicago, Illinois, Gary, Indiana, and Milwaukee, Wisconsin) remain VOC-sensitive on exceedance days as the higher NO_2 VCDs in these areas counterbalance the regionally higher HCHO VCDs. Investigation of meteorological analysis data indicates that temperatures are warmer and the lake breeze circulation along the western Lake Michigan coastline is stronger on exceedance days, highlighting how meteorology plays a major role in explaining some of the differences between O_3 season days and exceedance days. Comparing weekdays and weekends, higher FNR values throughout much of the region indicate increasingly NO_x -sensitive O_3 chemistry on weekends. These changes are driven by lower NO_2 VCDs in urban areas, particularly in Chicago, and higher HCHO VCDs in the southern part of the domain on weekends. Overall, our analyses suggest that VOC emissions controls in major urban areas and NO_x emissions controls throughout the entire domain are necessary to decrease O_3 levels in the Lake Michigan region.

30

1 Introduction

Ground-level ozone (O_3) is an air pollutant that is known for its harmful effects on public health. Acute exposure to elevated O_3 levels can cause respiratory problems (e.g., asthma attacks) while chronic exposure can lead to premature death from respiratory and circulatory system illnesses (Jerrett et al., 2009; Turner et al., 2016; Nuvolone et al., 2018). To prevent such adverse effects, the United States Environmental Protection Agency (U.S. EPA) sets a National Ambient Air Quality Standard (NAAQS) for O_3 , which is currently 70 parts per billion by volume (ppbv) for the fourth-highest daily maximum 8-hour concentration (MDA8), averaged across three consecutive years (U.S. EPA, 2022a). The U.S. EPA designates counties in the U.S. where O_3 concentrations exceed the NAAQS as O_3 nonattainment areas (NAAs), and these areas are required by law to develop State Implementation Plans (SIPs) to address the problem. One such region of the U.S. that continues to be in violation of the O_3 NAAQS is the Lake Michigan region, including NAAs in the states of Illinois, Indiana, Michigan, and Wisconsin (U.S. EPA, 2022b).

Developing strategies to decrease surface O_3 levels is complicated because O_3 is a secondary pollutant not directly emitted into the atmosphere. Tropospheric O_3 production depends on a series of chain reactions involving the catalytic cycling of nitrogen oxides ($NO_x = NO + NO_2$) between nitric oxide (NO) and nitrogen dioxide (NO_2) and reactive hydrogen species ($HO_x = OH + HO_2 + RO_2$) between the hydroxyl radical (OH), hydroperoxyl radical (HO_2), and peroxy radicals (RO_2) (National Research Council, 1991). The chain begins with reactions that produce HO_x , most notably OH. The OH can then react with volatile organic compounds (VOCs) to produce RO_2 . Finally, RO_2 can oxidize NO to NO_2 , which can be photolyzed to produce O_3 .

The termination of the O_3 production chain is dependent on the relative levels of NO_x and HO_x . When NO_x is low and HO_x is high, HO_x cycling is terminated by $HO_x + HO_x$ reactions, one of which produces hydrogen peroxide (H_2O_2). In this “ NO_x -sensitive” regime, O_3 production increases linearly with NO_x (Milford et al., 1989; Sillman, 1999). NO_x emissions reductions in this regime decrease the amount of NO available to react with RO_2 and HO_2 , thus decreasing the rate of O_3 production. When NO_x is high and HO_x is low, the O_3 production chain is terminated by $NO_x + HO_x$ reactions, one of which forms nitric acid (HNO_3). In this “VOC-sensitive” regime, VOC emissions reductions decrease RO_2 formation, leading to decreased O_3 production; meanwhile, increased NO_x emissions in this regime can suppress the rate of O_3 formation through more $NO_x + HO_x$ termination reactions (Milford et al., 1989; Sillman, 1999). In a third regime between VOC and NO_x sensitivities (“the transition zone”), O_3 production can be reduced by decreasing either or both VOC and NO_x emissions (Duncan et al., 2010). More details about the O_3 producing chemical cycles involving NO_x and VOCs can be found in Jacob (1999, 2000), Thornton et al. (2002), Schroeder et al. (2017), and Vermeuel et al. (2019).

Overall, the production rate of O_3 can be represented as a non-linear function of the concentrations of NO_x and VOCs (Haagen-Smit, 1952; Milford et al., 1989; Sillman, 1995). Knowing the O_3 chemistry sensitivity within a geographical area is

informative for regulatory agencies that develop NAAQS attainment strategies through NO_x and VOC emissions control programs. In the Lake Michigan region, NO_x emissions primarily come from anthropogenic fossil fuel combustion, such as diesel and gasoline vehicle usage and electricity generation (U.S. EPA, 2021). VOC emissions come from both anthropogenic sources (e.g., industrial solvent application) and natural biogenic emissions from plants and crops (U.S. EPA, 2021).

Ozone chemistry sensitivities can be identified through chemical concentration-based indicator ratios. Sillman (1995) identified H₂O₂/HNO₃ as one of the most robust indicators for describing the loss of RO₂ and HO₂ (L_{HO_x}) to the loss of NO_x (L_{NO_x}), which are the processes that control ozone–NO_x–VOC sensitivity. However, measurements of H₂O₂ and HNO₃ are not regularly made (i.e., they are limited to a few field campaigns). Sillman (1995) also found that the formaldehyde (HCHO) to reactive nitrogen (NO_y) ratio (HCHO/NO_y) is another viable indicator, though less robust than H₂O₂/HNO₃. HCHO can be used as a proxy for VOC reactivity because many VOC oxidation reactions in the O₃ chemistry cycles produce HCHO (Sillman, 1995; Valin et al., 2016). Building upon Sillman’s work, Tonnesen and Dennis (2000) found that HCHO/NO₂ (“FNR” for the rest of this paper) is another useful indicator of ozone–NO_x–VOC sensitivity since HCHO and NO₂ have similar lifetimes on the order of hours. Using species with similar lifetimes in the indicator ratio can represent the competing interactions between the various species that determine the sensitivity of local O₃ production (Tonnesen and Dennis, 2000).

The FNR indicator ratio is well-suited for satellite data analyses because HCHO and NO₂ column densities are both measurable from space. Satellite-derived FNRs from the Global Ozone Monitoring Experiment (GOME), SCanning Imaging Absorption spectroMeter for Atmospheric Cartography (SCIAMACHY), and Ozone Monitoring Instrument (OMI) have been used to infer ozone–NO_x–VOC sensitivity for many regions around the world (Martin et al., 2004; Duncan et al., 2010; Jin and Holloway, 2015; Chang et al., 2016; Jin et al., 2017; Jin et al., 2020). Despite being applied in many analyses, the threshold FNR values used to distinguish between VOC-sensitive and NO_x-sensitive O₃ chemistry varies by study. Much of the early work in this line of research (e.g., Martin et al., 2004; Duncan et al., 2010) used models to estimate FNR threshold values. A more recent study by Jin et al. (2020; referred to as “J20” for the rest of this work) took a different approach by connecting satellite FNRs directly to ground monitoring data. The authors defined the transitional regime as the top 10 % of a third-order polynomial curve fitted by associating OMI-derived FNRs to in situ O₃ exceedance probabilities (i.e., the number of surface observations exceeding 70 ppbv divided by the total number of observations). This approach determines threshold values that describe the sensitivity of high O₃ levels to NO_x and VOCs, which is different than previous modelling studies that reported thresholds describing the sensitivity of O₃ production (P_{O₃}) to precursor levels. **Table 1** displays the J20 FNR threshold values for different high O₃ chemistry sensitivities.

95

Table 1. J20 FNR threshold values indicating different high O₃ chemistry sensitivities for Chicago, Illinois, U.S.

Source	VOC-sensitive	Transition zone	NO _x -sensitive
Jin et al. 2020 (“J20”)	FNR < 3.2	3.2 < FNR < 4.1	FNR > 4.1

100 In this work, we calculate 2019–2021 mean FNR values in the Lake Michigan region using retrievals from the TROPospheric
Monitoring Instrument (TROPOMI) onboard the Sentinel-5 Precursor (S5P) satellite. We then analyse changes in the satellite-
derived HCHO, NO₂, and FNR values between O₃ season days and O₃ exceedance days as well as weekdays and weekends.
We define May to September as the O₃ season because this is the period in which most O₃ exceedance days occur in the
Chicago-Naperville-Elgin, Illinois-Indiana-Wisconsin, core-based statistical area (hereafter the Chicago metropolitan area, or
105 “CMA” for short), which is the part of the Lake Michigan region that experiences the most exceedances. An O₃ exceedance
day is defined as a day in which at least one ground monitor measures an MDA8 O₃ level above the U.S. EPA NAAQS (70
ppbv). We apply the J20 thresholds to the satellite FNRs to assess changes in the spatial distribution of O₃ chemistry
sensitivities. Further discussion on the use of the J20 thresholds is provided in the data & methodology section. We supplement
the FNR analyses with analyses of 10-meter winds and 2-meter temperatures to provide meteorological context to the satellite-
110 based results.

2 Data & methodology

2.1 Satellite data: S5P TROPOMI

The S5P satellite was launched in October 2017 and has a polar, sun-synchronous orbit, providing global daily data
approximately at 13:30 local solar time (Ludewig et al., 2020). TROPOMI is an ultraviolet-visible-near infrared-shortwave
115 infrared nadir-viewing grating spectrometer onboard the S5P satellite that measures trace gases in the atmosphere as well as
cloud and aerosol properties (Veefkind et al., 2012; van Geffen et al., 2020). The original spatial resolution of TROPOMI data
was 3.5 km × 7 km. Since August 2019, the spatial resolution has been upgraded to 3.5 km × 5.5 km (van Geffen et al., 2020).
To calculate satellite FNRs, we utilize level 2 (L2) TROPOMI NO₂ and HCHO tropospheric vertical column density (VCD)
retrievals for the O₃ seasons of 2019, 2020, and 2021.

120

For TROPOMI NO₂, we used S5P Product Algorithm Laboratory (PAL) retrievals (Koninklijk Nederlands Meteorologisch
Instituut [KNMI], 2021). The S5P-PAL NO₂ dataset is a reprocessing of the official TROPOMI NO₂ data product using the
v02.03.01 processor to provide a harmonized dataset from April 2018 to September 2021 (the official product switched
processor versions in December 2020, introducing a discontinuity). Details regarding the TROPOMI NO₂ tropospheric VCD
125 retrieval algorithm are found in van Geffen et al. (2022a). The total uncertainty in satellite NO₂ tropospheric VCD retrievals
is estimated to be between 15–50 % for larger columns over continental areas (Boersma et al., 2018; van Geffen et al., 2022a).

van Geffen et al. (2022b) found that version 1 of TROPOMI NO₂ tropospheric VCD data had an average bias of -32 % and version 2 had an average bias of -23 % (i.e., are 32 % and 23 % too low, respectively) when compared to ground-based tropospheric column measurements. This improvement is largely due to a significant increase in tropospheric NO₂ for cloud-free scenes (Eskes and Eichmann, 2022).
130

For HCHO, we used versions 1 and 2 of the official TROPOMI data product (German Aerospace Center [DLR], 2019, 2020). The TROPOMI HCHO processor changed from version 1 to 2 in July 2020, with the major changes including an improved background correction and an updated quality assurance value (qa_value) determination (De Smedt et al., 2022). Unlike NO₂,
135 no harmonized TROPOMI HCHO data product is available that includes our entire study period, restricting us to use both versions. Specifics regarding the TROPOMI HCHO tropospheric VCD retrieval algorithm can be found in De Smedt et al. (2018). The total uncertainty in HCHO tropospheric VCD retrievals is currently estimated to be between 30–60 % in polluted conditions (De Smedt et al., 2021). TROPOMI HCHO data are systematically biased by approximately -25 % (i.e., are 25 % too low) for HCHO columns larger than 8×10^{15} molecules per square centimeter (molec. cm⁻²) when compared to ground-
140 based column measurements (De Smedt et al., 2021).

2.1.1 Errors associated with FNRs derived from S5P TROPOMI data

The average negative bias of TROPOMI HCHO VCD data results in lower FNR values, which would incorrectly indicate more VOC-sensitive O₃ chemistry than what is “true”. Oppositely, the average negative bias of TROPOMI NO₂ VCD data results in higher FNR values, which would incorrectly indicate more NO_x sensitivity. Souri et al. (2023) provide a robust
145 discussion on the errors associated with using satellite-derived FNRs to indicate O₃ sensitivity, which they break down into four parts: (1) chemistry error, (2) the column-to-planetary boundary layer transition, (3) the spatial representation error, and (4) the satellite retrieval error. They find that the satellite retrieval error is often the largest contributor to the overall error in FNR values, which can be estimated using equation 15 in Souri et al. (2023). Using the average bias values for HCHO (-25 %) and NO₂ (-23 %) in that equation, we expect the average relative error of the FNR values presented in this work (due to
150 retrieval error) to be approximately 34 %. Souri et al. (2023) also report that the total combined error of FNRs in urban areas were relatively small (<50 %) compared to those of more “pristine” environments (>100 %). For our study, this implies that FNRs over urban areas, such as Chicago, have lower errors than those over more rural areas with less pollution.

2.2 Satellite data processing: S5P TROPOMI composites

TROPOMI retrievals of HCHO are primarily derived from the instrument’s spectral Band 3 (range: 310–405 nm), while NO₂
155 retrievals are derived from spectral Band 4 (range: 405–500 nm) (Veefkind et al., 2012; De Smedt et al., 2018; van Geffen et al., 2022a). Both bands have a minimum signal-to-noise ratio (SNR) between 800 and 1000 (Veefkind et al., 2012). However, HCHO has an optical density that is an order of magnitude smaller than that of NO₂ because the spectral band its retrieval is derived from is in the UV range where Rayleigh scattering and ozone absorption occur (De Smedt et al., 2018). As a result,

individual HCHO retrievals are noisier than NO₂ retrievals. Despite lower quality individual retrievals, Vigouroux et al. (2020) found that monthly mean TROPOMI HCHO VCD composites correlate well with ground-based Fourier-transform infrared station measurements of HCHO VCDs, providing confidence that the precision of TROPOMI measurements allows the seasonal variability in HCHO levels to be captured. To reduce the impacts of noisy TROPOMI HCHO retrievals and to allow for the analysis of general spatial patterns in FNR values, we composited TROPOMI HCHO and NO₂ data on seasonal timescales (see **Table 2** for more details). We constructed gridded mean TROPOMI HCHO and NO₂ “clear sky” (cloud radiance fraction <0.5) tropospheric VCD composites using quality controlled L2 retrievals based on the recommended qa_value >0.50 for HCHO (De Smedt et al., 2022) and qa_value >0.75 for NO₂ (Eskes and Eichmann, 2022). The grid onto which the TROPOMI data were composited has a spatial resolution of 12 km × 12 km covering the continental United States with a Lambert conformal conic projection. The composites were subset to the Lake Michigan region (latitude bounds: 40.6° N to 45.5° N; longitude bounds: 89.1° W to 85.35° W) for analysis (**Fig. 1**). Note that we used a grid with a coarser spatial resolution than the original TROPOMI pixel footprint based on a sensitivity test using a 4 km × 4 km grid; at this higher resolution, the HCHO composites were too noisy and did not lead to clear general spatial patterns in the FNR composites.

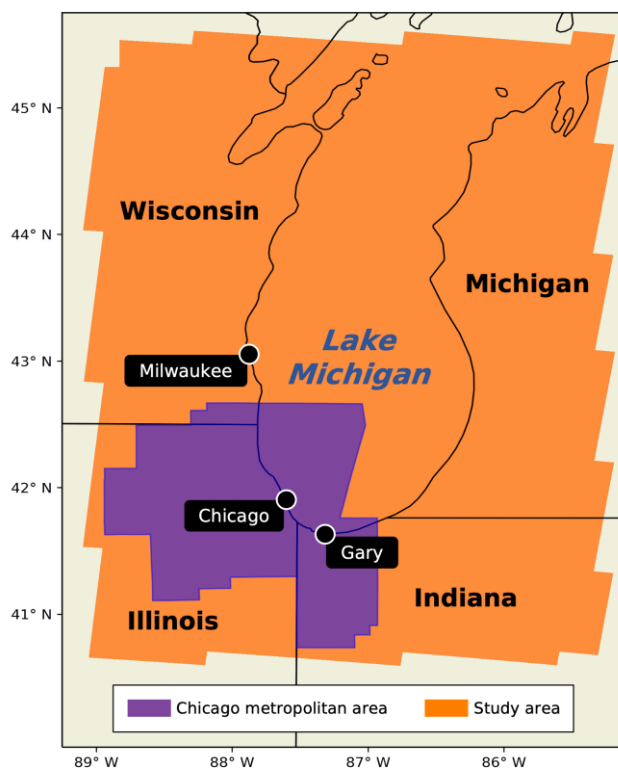


Figure 1. Map of the Lake Michigan region with the study area highlighted in orange. The Chicago metropolitan area, highlighted in purple, is part of the study area. The locations of cities mentioned in this work are denoted with a black dot.

We produced TROPOMI HCHO and NO₂ tropospheric VCD composites for four distinct categories: (1) all O₃ season days, (2) O₃ exceedance days, (3) weekdays, and (4) weekends (**Table 2**). In the compositing process, the value assigned to each grid cell is the average of all TROPOMI pixels that fall into the grid cell using a nearest neighbour approach. To create the O₃ season composite, we used TROPOMI data from the O₃ seasons (May to September) for the years 2019, 2020, and 2021. Next, we created the O₃ exceedance day composite by using satellite data only on days in which at least one ground monitor in the U.S. EPA Air Quality System (AQS) within the Chicago metropolitan area (CMA) measured an MDA8 O₃ value greater than the NAAQS 70 ppbv standard. For this composite, we deemed the CMA as representative of the Lake Michigan domain since it is the area that experiences the most O₃ exceedances in the region. The exceedance day composite included 53 days of TROPOMI data. See **Tables S1** and **S2** in supplemental information for the individual dates of O₃ exceedance days and their distributions by year and day of week. The weekday and weekend composites were created following a similar procedure as that for the O₃ season but using Tuesday/Wednesday data for the weekday composite and Saturday/Sunday data for the weekend composite. Finally, FNR composites for all categories were generated by dividing the HCHO composite values by the NO₂ composite values.

Table 2. Categories of TROPOMI data composites created in this study.

Composite category	Amount of data composited
Ozone season (May to September)	459 days
CMA O ₃ exceedance days	53 days
Weekdays (Tuesdays/Wednesdays)	114 days
Weekends (Saturdays/Sundays)	114 days

2.3 Meteorological data composites

To provide meteorological context to the FNR analyses, we created composites of 2-meter temperatures and 10-meter winds using the same methodology described in section 2.2. The temperature data come from the National Centers for Environmental Prediction (NCEP) North American Mesoscale (NAM) 12 km Analysis dataset (NCEP, 2015). The 10-meter east-west (U) and north-south (V) wind data originally come from the European Centre for Medium-Range Weather Forecasts (ECMWF) Analysis dataset and are provided for each pixel within the TROPOMI L2 retrieval files (Eskes and Eichmann, 2022). We also used the wind data to calculate the divergence of the composited wind field (units: s⁻¹, **Eq. 1**) using fourth order accurate approximations of the horizontal derivatives of U and V (**Eq. 2–3**; adapted from Kalnay-Rivas and Hoitsma, 1979):

$$\nabla \cdot \vec{V} = \frac{\partial U}{\partial x} + \frac{\partial V}{\partial y} \quad (1)$$

$$\frac{\partial U}{\partial x} = \frac{4}{3} \left(\frac{U(x+\Delta x) - U(x-\Delta x)}{2\Delta x} \right) - \frac{1}{3} \left(\frac{U(x+2\Delta x) - U(x-2\Delta x)}{4\Delta x} \right) \quad (2)$$

$$\frac{\partial V}{\partial y} = \frac{4}{3} \left(\frac{V(y+\Delta y) - V(y-\Delta y)}{2\Delta y} \right) - \frac{1}{3} \left(\frac{V(y+2\Delta y) - V(y-2\Delta y)}{4\Delta y} \right) \quad (3)$$

205

2.4 Analysis of data composites

The primary method of analysis is taking the difference between composites and interpreting what that means in terms of O₃ chemistry sensitivity. Through analysing difference plots, we can determine if changes in FNR values and O₃ chemistry sensitivities are due to changes in HCHO or NO₂ levels (or both). We also apply the J20 thresholds (**Table 1**) to the FNR composites. It must be noted that the J20 thresholds describe high O₃ sensitivity to precursors (as opposed to P_{O3} sensitivity). This makes these thresholds less robust because O₃ levels are affected by physical processes, such as transport, dry deposition, etc., that vary in time and space. However, we still apply the J20 thresholds because we are primarily interested in providing a qualitative picture of the spatial differences in ozone sensitivity between all O₃ season days and exceedance days and identifying the causes of those changes on the most polluted days. Furthermore, the J20 thresholds were derived using OMI data, which have different errors than TROPOMI data. van Geffen et al. (2022b) found that TROPOMI NO₂ VCDs are lower than OMI VCDs, which can lead to higher TROPOMI FNRs than those derived from OMI (and thus incorrect interpretations of more NO_x sensitivity). TROPOMI data also have a higher spatial resolution than OMI data. We acknowledge that these differences impact our interpretations of O₃ chemistry sensitivity when we apply the J20 OMI-based thresholds to TROPOMI FNRs. Finally, we recognize that our 3-year composites contain data from years affected by the COVID-19 pandemic (e.g., 2020). We chose to combine 3 years of data so that the number of exceedance days is higher, making the composites more statistically robust. Where appropriate, we highlight any differences among the individual years and describe the possible impacts of the pandemic on O₃ precursor levels.

2.4.1 Significance testing

We utilize the non-parametric Kolmogorov-Smirnoff (K-S) test to determine the significance of the differences between the O₃ season and O₃ exceedance day composites and the weekday and weekend composites. The null hypothesis of the test is that two sample distributions come from the same population, which we reject when the p-value is <0.02 (98 % confidence level). We adopt the random sampling approach used by Lin et al. (2015) to conduct the K-S tests. More specifically, we conduct 1000 individual K-S tests on a random subsample of one fourth of the total number of domain values (without replacement) for each paired composite. When the median p-value of the 1000 K-S tests is <0.02, we interpret the results as indicating a significant difference between the two distributions. **Tables S3** and **S4** in the supplemental information contain detailed results, including the number of K-S tests with a significant difference, the median p-value of the 1000 tests, and subsample sizes.

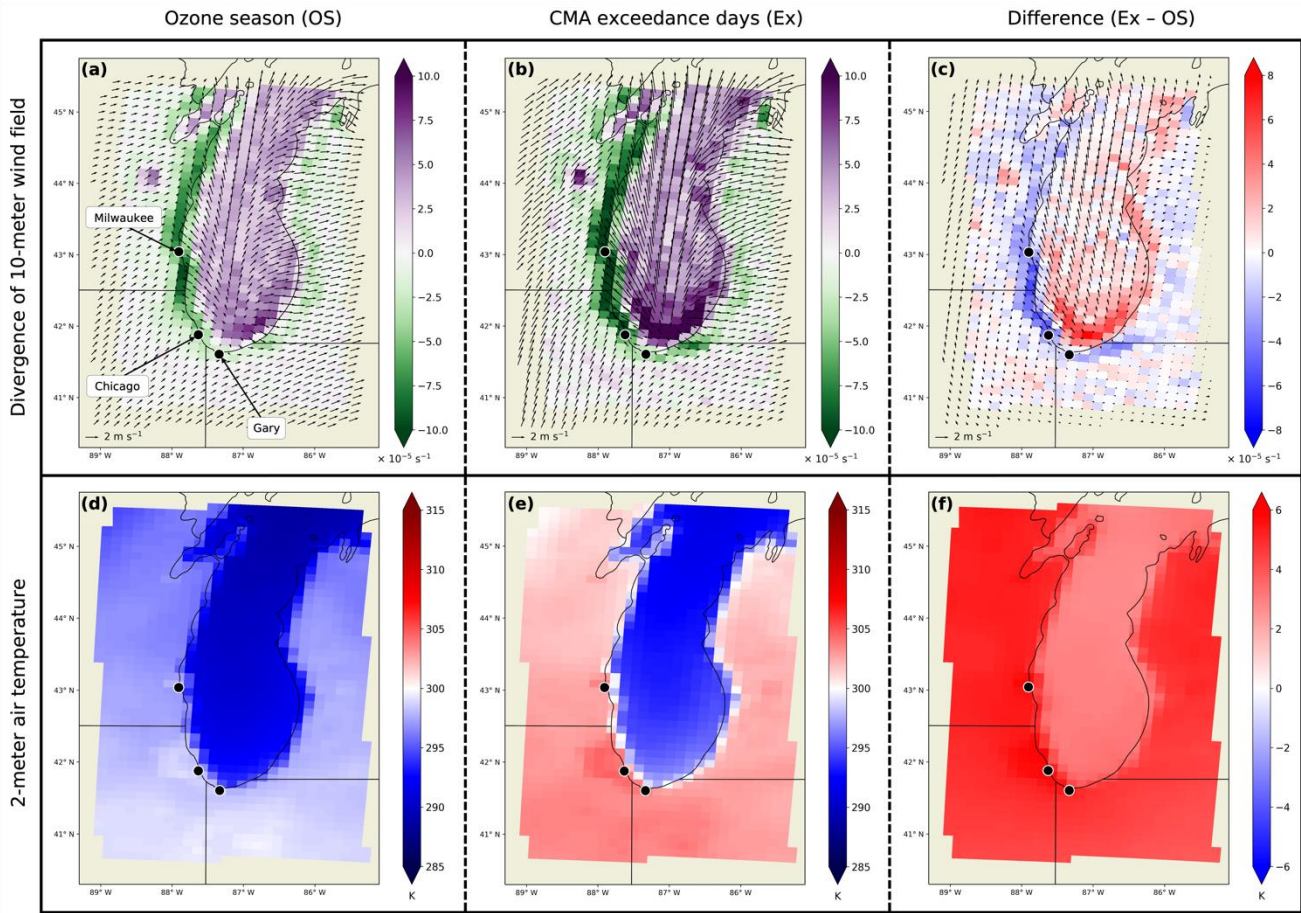
3 Results & discussion

3.1 Comparison of O₃ season days and CMA O₃ exceedance days

235 In this section we compare the O₃ season and Chicago metropolitan area (CMA) O₃ exceedance day composites. For context, there were 13, 20, and 20 ozone exceedance days in the CMA in 2019, 2020, and 2021, respectively (**Table S1**).

3.1.1 Meteorological composites

Figure 2 displays plots of mean 10-meter wind vectors and the mean divergence of the wind field during the ozone season (**Fig. 2a**) and CMA exceedance days (**Fig. 2b**). In both composites, the average wind pattern along the Lake Michigan coastline (during the TROPOMI 13:30 local overpass time) is consistent with a thermally direct lake breeze circulation in which the wind blows from over the lake and onto the land due to differential heating rates between the lake and land surfaces (Lyons, 1972; Laird et al., 2001). The mean wind field divergence values occur in two regimes: (1) positive values indicating divergence, which occurs most strongly over the lake, and (2) negative values indicating convergence, which occurs most strongly along the western Lake Michigan coastline during the study period. In the difference plot (**Fig. 2c**), mean divergence values are more negative along the western Lake Michigan coastline and more positive over the southern part of the lake during exceedance days. This indicates that the lake breeze circulation is stronger during CMA exceedance days relative to all days across the O₃ season. Additionally, these findings are also in alignment with other studies that find that O₃ is often produced when both NO_x and VOCs are present in a shallow marine boundary layer above Lake Michigan; the high O₃ concentrations are then pushed onshore by the lake breeze, resulting in counties along the lakeshore having elevated O₃ levels (Dye et al., 1995; Stanier et al., 2021; Cleary et al., 2022; Wagner et al., 2022). When we performed K-S tests allowing any of the domain values to be sampled, the results indicated no significant difference between the wind divergence composites (median p-value = 0.117; **Table S3**). However, these results are biased because of the inclusion of very small and zero-valued divergence occurring over land areas away from coastlines. Because we are most interested in how the strength of wind divergence/convergence changes, which are the larger absolute values at the ends of the distribution, we performed the K-S tests again while restricting the sampling to values greater and less than one standard deviation from the mean. This time the tests indicated a significant difference (median p-value = 0.001; **Table S3**), supporting the idea that the lake breeze circulation, particularly along the western Lake Michigan coastline, is stronger on CMA exceedance days.



260 **Figure 2.** Divergence values of the mean 10-meter wind field (top row) and mean 2-meter air temperatures (bottom row) in the Lake Michigan region during: (a/d) the ozone season (OS), (b/e) Chicago metropolitan area (CMA) ozone exceedance days (Ex), and (c/f) the difference between them (Ex - OS). In (a) and (b), positive (purple) values indicate divergence while negative (green) values indicate convergence. Mean 10-meter winds are represented by arrows.

265 The strengthening of the lake breeze during CMA exceedance days suggests that either land temperatures are warmer or lake temperatures are colder during exceedance days because the lake breeze is a thermally direct circulation. This hypothesis is supported by **Figures 2d-f**, which show plots of the 2-meter air temperature. During both the ozone season (**Fig. 2d**) and CMA exceedance days (**Fig. 2e**), temperatures over land are warmer than over the lake, and the Milwaukee, Chicago, and Gary urban heat islands stand out as having higher temperatures than surrounding land areas. The difference plot shows that temperatures are warmer throughout the entire domain on exceedance days, with the temperatures over land showing greater warming than over the lake (**Fig. 2f**). K-S tests indicate a significant difference between the composites (median p-value = 0; **Table S3**).

270 Looking at years individually, 2020 and 2021 had higher average temperatures during exceedance days than 2019.

Correspondingly, the wind divergence/convergence values are greater in 2020 and 2021. These meteorological factors likely played a role in why the CMA had more O₃ exceedances in 2020 and 2021 (20 each) than in 2019 (13).

275 3.1.2 Chemical composites

Figure 3 displays composite mean tropospheric NO₂ VCDs during the ozone season (**Fig. 3a**) and CMA exceedance days (**Fig. 3b**), along with mean 10-meter wind vectors. The spatial distribution of tropospheric NO₂ VCDs in both composites shows a clear hotspot of emissions in the CMA. During exceedance days, we also see higher NO₂ VCDs extending along the coastline between Chicago and Milwaukee. **Figure 3c**, the difference between the composites, shows that NO₂ VCDs are
280 higher throughout the entire domain on exceedance days, with the greatest increase of 2.26×10^{15} molec. cm⁻² near the urban core of Chicago. K-S tests indicate that these differences are statistically significant (median p-value = 0; **Table S3**). The increased NO₂ VCDs on exceedance days found along coastline between Milwaukee and Chicago can be partially explained by the stronger convergence of the wind field, which concentrates emissions originating in these areas along the southwestern shore of Lake Michigan. Further research is needed to determine why NO₂ VCDs are higher for the whole domain during
285 exceedance days (e.g., examining emissions inventories/datasets, looking for temperature dependent natural sources of NO_x, etc.). Investigating individual years, we see a COVID-19 pandemic signal. The maximum NO₂ values (for both the ozone season and exceedance day composites) are about 20 % lower in 2020 and 2021 than in 2019. Interestingly, the mean NO₂ VCDs for all composites (including the difference) are relatively consistent throughout all three years.

290

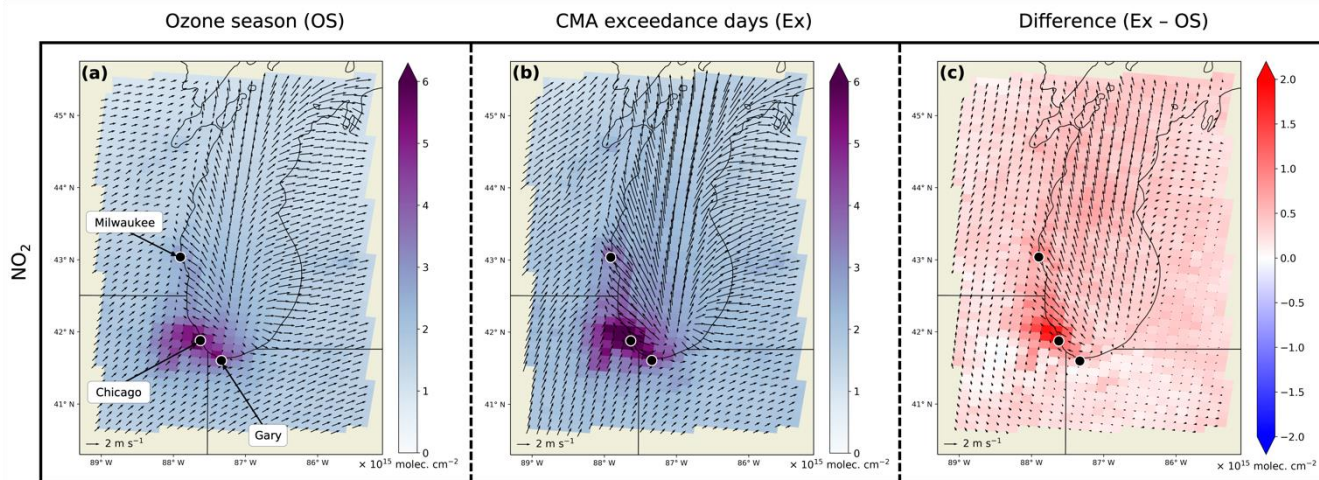


Figure 3. TROPOMI-derived composites of 2019–2021 mean tropospheric NO₂ vertical column densities in the Lake Michigan region during: (a) the ozone season (OS), (b) Chicago metropolitan area (CMA) ozone exceedance days (Ex), and (c) the difference between them (Ex – OS). Mean 10-meter winds are represented by arrows.

295

Figure 4 displays composite mean tropospheric HCHO VCDs during the ozone season (**Fig. 4a**), Chicago exceedance days (**Fig. 4b**), and the difference between them (**Fig. 4c**), along with mean 10-meter wind vectors. In general, the spatial distribution of HCHO in both composites is relatively homogeneous (compared to NO_2), though higher VCDs can be seen over the Lake Michigan water surface. In both the ozone season and exceedance day composites, the mean over water HCHO VCD is higher than the over land mean value. However, this pattern is highly suspect because HCHO is a relatively well-mixed gas without significant sources over the lake. HCHO emissions come from both anthropogenic (e.g., industrial processes) and biogenic sources (i.e., plants) on land. Therefore, we believe this over water bias is an artifact of the TROPOMI HCHO retrieval algorithm (van Geffen et al., 2022a), which utilizes a $0.5^\circ \times 0.5^\circ$ OMI-derived surface albedo climatology dataset (Kleipool et al., 2008). The resolution of this dataset is too coarse to fully resolve the complex surface albedo properties that are common to lake surfaces.

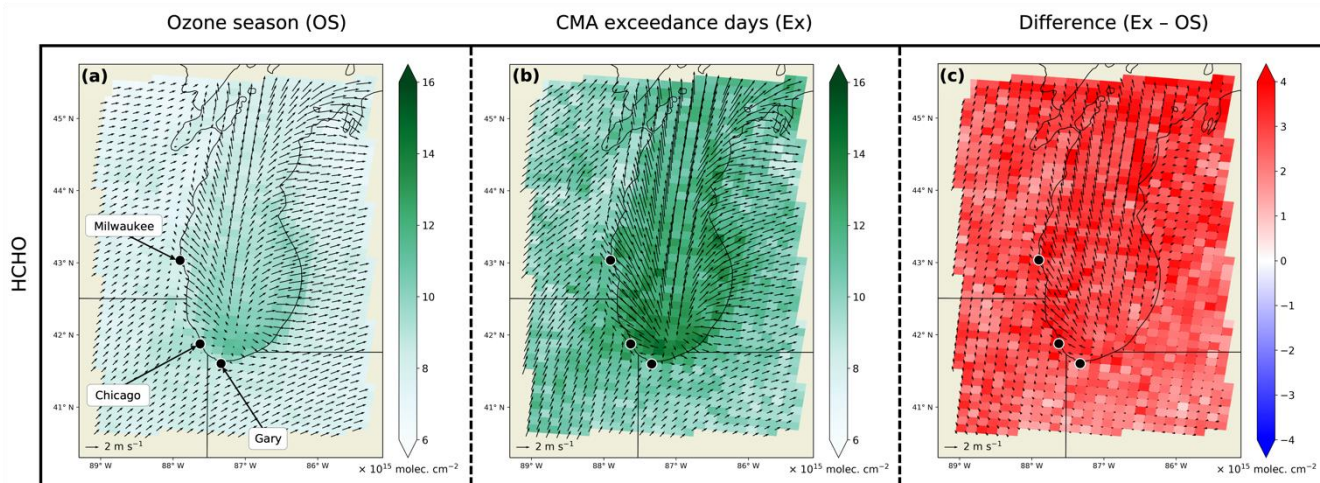


Figure 4. TROPOMI-derived composites of 2019–2021 mean tropospheric HCHO vertical column densities in the Lake Michigan region during: (a) the ozone season (OS), (b) Chicago metropolitan area (CMA) ozone exceedance days (Ex), and (c) the difference between them (Ex – OS). Mean 10-meter winds are represented by arrows.

To address the over water HCHO artifact, we “bias correct” the composites under the assumption that the mean HCHO VCD should be equal over water and land. To calculate the bias, we subtract the mean over land HCHO VCD from the mean over water HCHO VCD. Then, we subtract this bias value from all water grid box values. During the ozone season, the absolute bias is approximately 1.1×10^{15} molec. cm^{-2} (relative bias of +14.05 %). During CMA exceedance days, the absolute bias is about 1.6×10^{15} molec. cm^{-2} (relative bias of +15.6 %). These calculations are summarized in **Figure S1** and **Table S5**. Looking at individual years, the bias value for both the ozone season and exceedance day composites is about 10 % for both 2019 and

320 2020, but this value jumps to 25 % in 2021. We see a similar jump in the 2021 bias value for the weekday and weekend composites as well. We use the bias corrected HCHO values when calculating FNRs in this work.

Figure 5 displays bias corrected composite mean tropospheric HCHO VCDs during the ozone season (**Fig. 5a**) and CMA exceedance days (**Fig. 5b**), along with mean 10-meter wind vectors. As before bias correcting, the spatial distribution of HCHO
325 in both composites is relatively homogeneous compared to the distribution of NO_2 . We still see slightly higher HCHO VCDs over the southern part of the lake and near the eastern coastline, but the difference between these pixels and the surrounding land pixels are much smaller than before. **Figure 5c** displays the difference between the composites. Because positive differences occur over the entire domain, the higher HCHO abundances are likely due to increased temperatures during O_3 exceedance events (**Fig. 2f**), which lead to increased biogenic VOC emissions and thus increased O_3 production in regions
330 with VOC-sensitive chemistry (Sillman and Samson, 1995). K-S test results show that the differences between the composites are statistically significant (median p-value = 0; **Table S3**). From an individual year perspective, 2019 had higher mean HCHO VCDs than 2020 and 2021 during both the O_3 season and exceedance days. This is opposite to the temperature differences between the years (2020 and 2021 were slightly warmer than 2019), which suggests that anthropogenic HCHO emissions were lower during the years impacted by the COVID-19 pandemic.

335

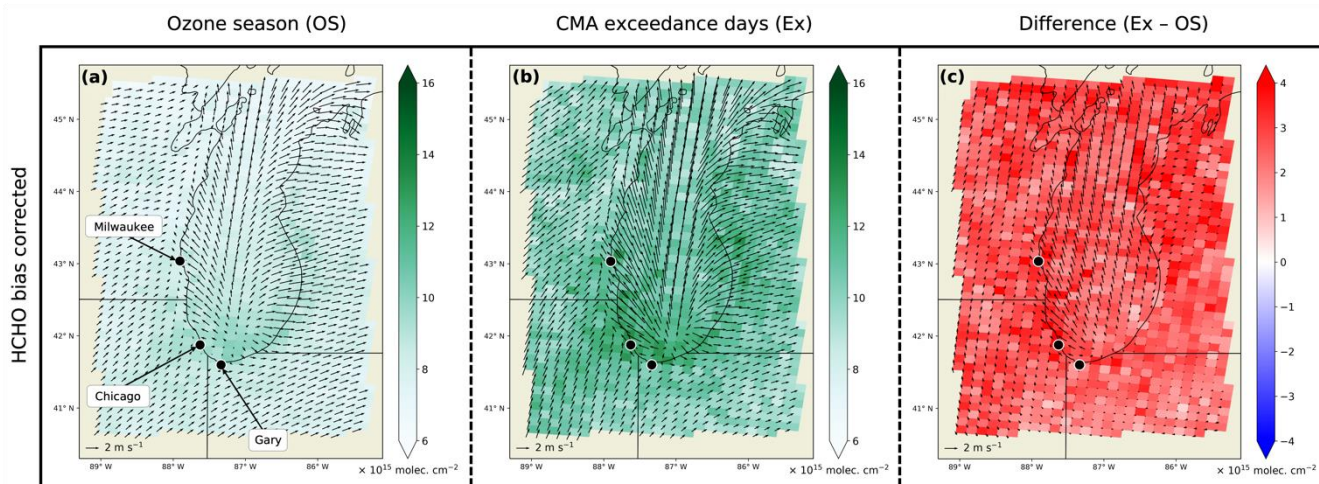


Figure 5. TROPOMI-derived composites of 2019–2021 bias corrected mean tropospheric HCHO vertical column densities in the Lake Michigan region during: (a) the ozone season (OS), (b) Chicago metropolitan area (CMA) ozone exceedance days (Ex), and (c) the difference between them (Ex – OS). Mean 10-meter winds are represented by arrows.

340

Figure 6 displays composite FNR values during the ozone season (**Fig. 6a**) and CMA exceedance days (**Fig. 6b**), along with mean 10-meter wind vectors. In both composites, the lowest FNR values occur in the CMA, its surroundings, and along the eastern Illinois and Wisconsin shorelines. The highest values are in the northern parts of Wisconsin and Michigan, which are

more rural and forested. **Figure 6c**, the difference between composites, shows that mean FNR values are higher on exceedance days for much of the domain, indicating increasingly NO_x -sensitive O_3 chemistry. However, the FNR values in the urban cores of Chicago and Milwaukee do not change much during exceedance days. In some grid boxes over northern portions of the Lake Michigan water surface, FNR values decrease, indicating increasing VOC sensitivity. K-S test results show that the differences between the composites are statistically significant (median p-value = 0; **Table S3**).

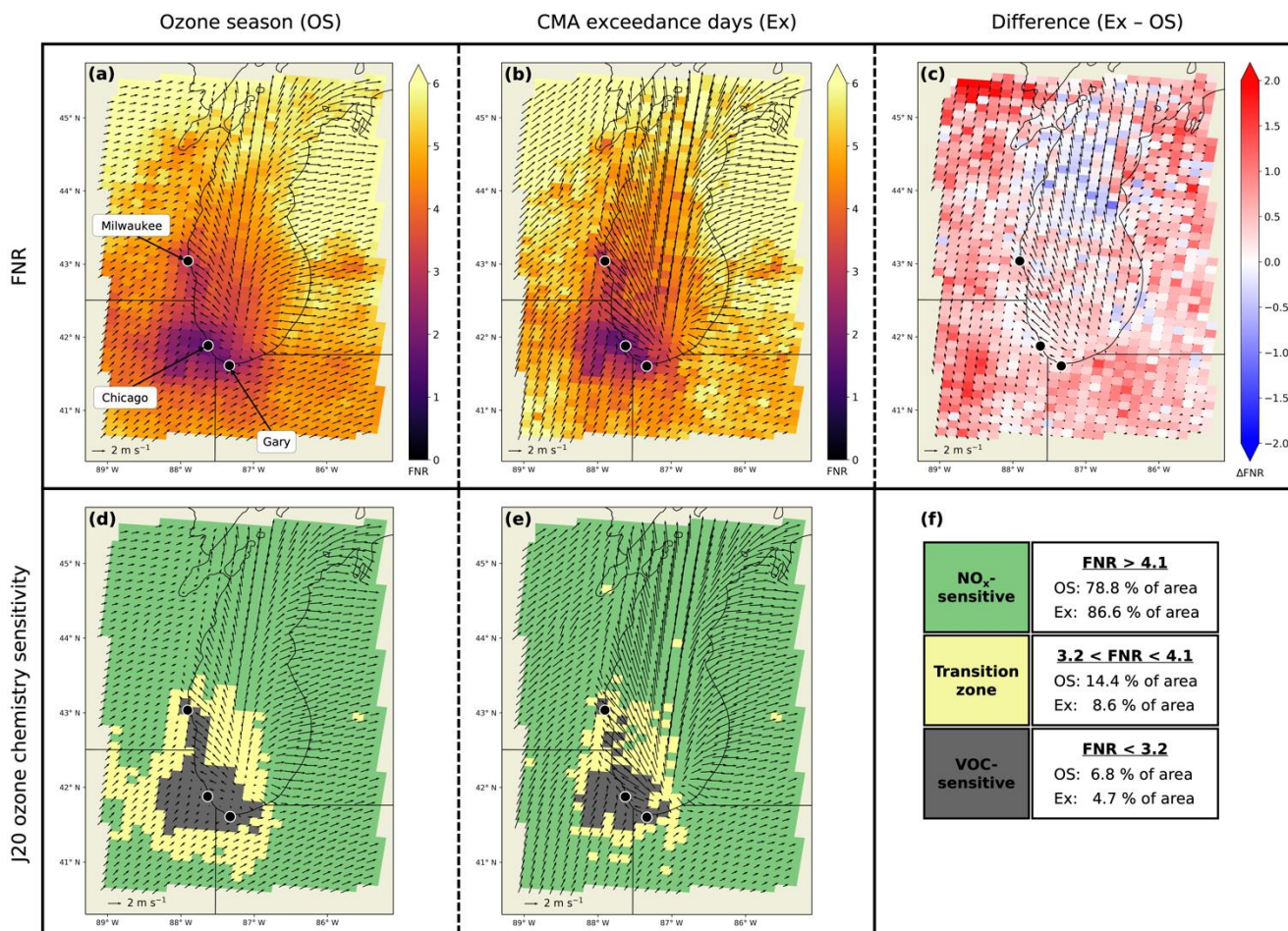


Figure 6. TROPOMI-derived 2019–2021 FNR values in the Lake Michigan region during: (a) the ozone season (OS), (b) Chicago ozone exceedance days (Ex), and (c) the difference between them (Ex – OS). J20 threshold interpretation of 2019–2021 ozone chemistry sensitivity during: (d) the ozone season, (e) Chicago ozone exceedance days, and (f) the percent of the domain area classified as each J20 sensitivity regime. Mean 10-meter winds are represented by arrows.

most notably the traffic corridors that extend westward from the CMA toward southern Wisconsin. The rest of the domain is
360 NO_x-sensitive. During exceedance days, the urban cores of Milwaukee, Chicago, and Gary remain VOC-sensitive because
higher NO₂ VCDs in these urban areas counterbalance the regionally higher HCHO VCDs. The area classified as transitional
changes from 14.4 % to 8.6 % during exceedance days, which is a decrease in transition zone area of 40 % (**Fig. 6f**). This is
due to increased HCHO VCDs that shift transition zone areas in the ozone season composite (in particular, the CMA-Wisconsin
365 traffic corridor and the areas surrounding the CMA) to NO_x-sensitive areas in the exceedance day composite. The rest of the
domain remains largely NO_x-sensitive on exceedance days. These analyses are approximately the same for individual years;
the main finding that the transition zone area decreases during exceedance days occurs in 2019, 2020, and 2021. **Figure S2**
shows the FNR results and J20 interpretations using the non-biased corrected HCHO composites. Bias correcting led to lower
HCHO VCDs and FNR values over water and thus more grid boxes classified as VOC-sensitive or transitional in **Fig. 6**
compared to **Fig. S2**. However, the spatial patterns in the FNR difference plots appear the same.

370

These results are similar to those of Vermeuel et al. (2019) and Acdan et al. (2020) who used chemical box modeling to
investigate the O₃ production sensitivity of air parcels as they traveled on O₃ exceedance days (June 2/4/11/12/15, 2017) from
their Chicago-Gary (Illinois-Indiana) urban source regions to over Lake Michigan, and then north along the western Lake
Michigan coastline. Their findings show that O₃ production within the plumes transitioned from having more VOC-sensitive
375 O₃ chemistry in the Chicago-Gary urban source regions to having more NO_x-sensitive O₃ chemistry as they advected north
along the Lake Michigan coastline. Our results and those of Vermeuel et al. (2019) and Acdan et al. (2020) find a general
south-north gradient in O₃ chemistry on exceedance days that transitions toward less VOC sensitivity/more NO_x sensitivity
starting from the south in the Chicago metropolitan area and going north along the western Lake Michigan shoreline. The
results of this work are also very similar to Tao et al. (2022), who used TROPOMI FNRs to compare O₃ exceedance and non-
380 exceedance days for summer 2018 over New York City. Both studies find regionally higher HCHO VCDs, higher NO₂ VCDs
over urban centers, regionally higher FNR values, and warmer temperatures on exceedance days. These similarities suggest
that the results presented here are broadly applicable to other coastal urban environments with O₃ exceedance problems. Future
work could investigate FNRs over Detroit, Michigan, and Los Angeles, California, to see if this implication is true.

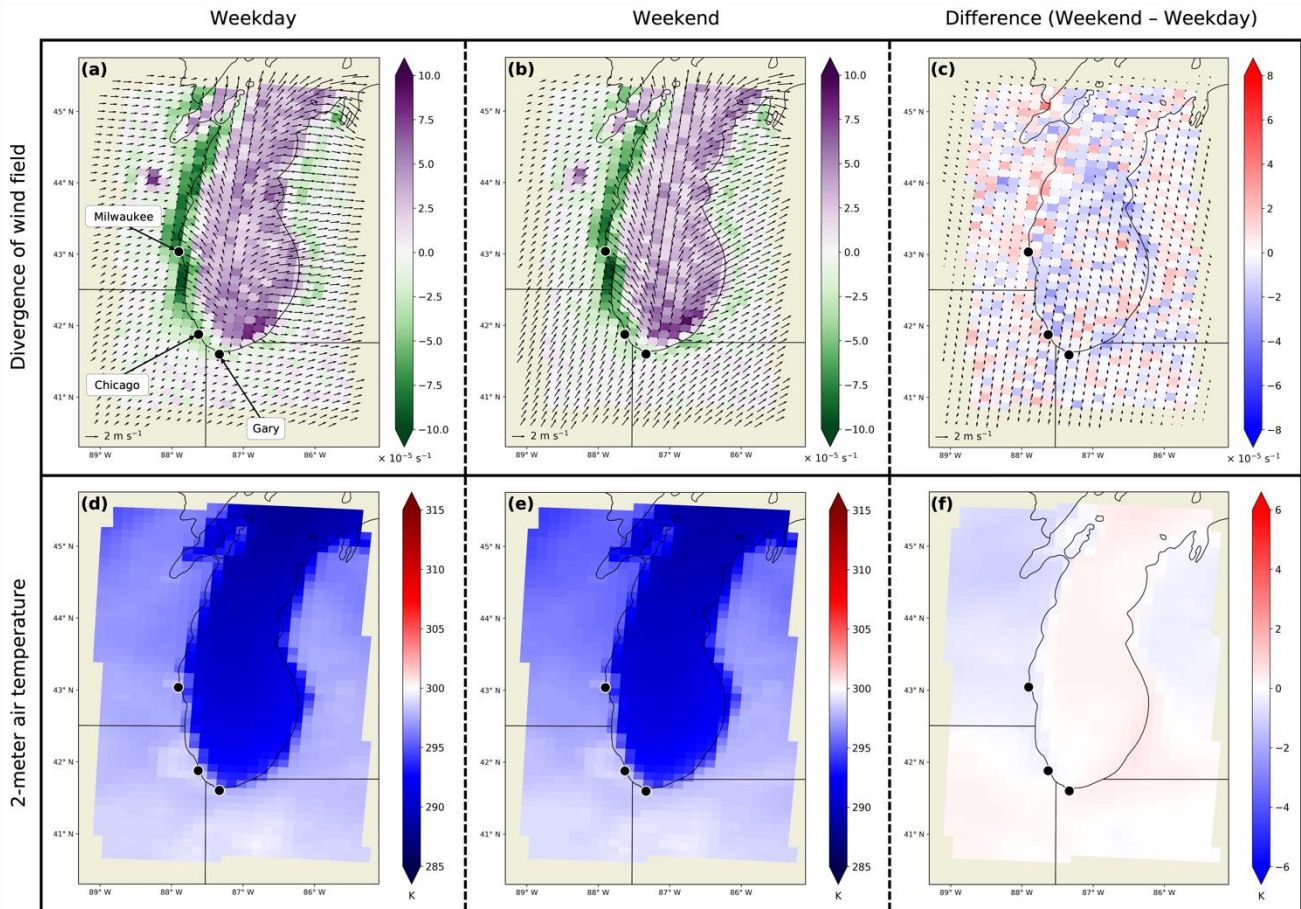
3.2 Comparison of weekdays and weekends

385 In this section we compare the weekday and weekend composites. For context, **Table S2** displays the distribution of CMA O₃
exceedance days by day of week. During 2019–2021, 85 % of the exceedances occurred on weekdays and 15 % on weekends.
Interestingly, O₃ exceedances occurred most on Fridays (15) while none occurred on Sundays.

3.2.1 Meteorological composites

Figure 7 displays plots of mean 10-meter wind vectors and the mean divergence of the wind field during weekdays (**Fig. 7a**)
390 and weekends (**Fig. 7b**). Similar to the ozone season and CMA exceedance day composites, the weekday and weekend

composites indicate that the average wind pattern along the Lake Michigan coastline (during the TROPOMI overpass time) is consistent with a lake breeze circulation. The difference plot (**Fig. 7c**) reveals relatively small differences between weekends and weekdays in the mean divergence of the wind field. Additionally, the average wind speed and direction is approximately the same between weekdays and weekends, as expected. K-S tests allowing the sampling of the full domain indicated that the differences between the composites are not statistically significant (median p-value = 0.607; **Table S4**). When we limit the K-S tests to the divergence/convergence values at the ends of the distribution, the differences are still not significant (median p-value = 0.821; **Table S4**). These results are similar for each year individually.



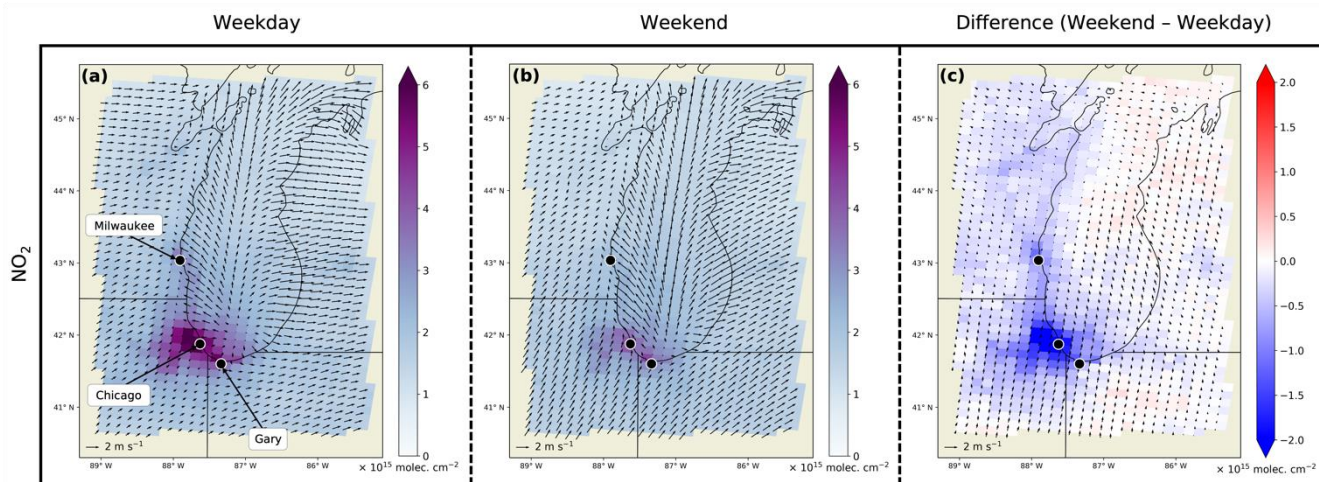
400 **Figure 7.** Divergence values of the mean 2019–2021 10-meter wind field (top row) and 2-meter air temperatures (bottom row) in the Lake Michigan region during: (a/d) weekdays, (b/e) weekends, and (c/f) the difference between them (weekend – weekday). Mean 10-meter winds are represented by arrows. In (a) and (b), positive (purple) values indicate divergence while negative (green) values indicate convergence.

405 **Figures 7d** and **7e** are plots of 2-meter air temperature during weekdays and weekends, respectively. The plot in **Figure 7f** shows that the temperature differences between weekdays and weekends are much smaller in magnitude than the differences

between the O₃ season and exceedance days (**Fig. 2f**). Temperatures appear to be slightly warmer over the southern part of the domain and the lake surface while they are slightly cooler over Wisconsin and much of Michigan on weekends. About 66 % of the individual K-S tests indicated that the differences are significant (**Table S4**). However, the median p-value = 0.023, which we interpret as indicating overall non-statistically significant differences at the 98 % confidence level. The difference pattern is quite variable when looking at individual years. In 2019 and 2020, the over land temperatures are generally cooler on weekends, while in 2021 most of domain is warmer on weekends.

3.2.2 Chemical composites

Figure 8 displays composite mean tropospheric NO₂ vertical column densities (VCDs) during weekdays (**Fig. 8a**) and weekends (**Fig. 8b**), along with mean 10-meter wind vectors. During weekdays, there is a clear hotspot of emissions in the CMA and a slightly smaller area of elevated NO₂ VCDs in Milwaukee. **Figure 8c**, the difference between the weekend and weekday composites, shows lower mean NO₂ VCDs in the CMA and Milwaukee on weekends. The regional average change is a decrease of 0.19×10^{15} molec. cm⁻² on weekends, with the greatest decrease of 3.19×10^{15} molec. cm⁻² occurring in the urban core of Chicago. This result is expected as NO_x emissions generally decrease due to less road traffic volume on weekends, especially from heavy-duty diesel trucks (Demetillo et al., 2021). The decreases in weekend NO₂ VCDs occur largely over the western part of the domain, while differences over Michigan and Indiana are much closer to zero. About 72 % of the K-S tests indicated that the differences are significant with a median p-value = 0.013 (**Table S4**). Looking at individual years, we once again see a COVID-19 pandemic signal in the weekday composites (**Figs. S3a–c**). The maximum NO₂ VCD in 2019 was 9.42×10^{15} molec. cm⁻², which dropped by 33 % and 24 % in 2020 and 2021, respectively. The difference pattern is also different in 2019 compared to 2020 and 2021 (**Fig. S3d–f**). Although all 3 years have lower weekend NO₂ VCDs in the CMA and Milwaukee, there is slightly higher weekend NO₂ VCDs in other parts of the domain in 2019. The plots for 2020 and 2021 have east-west spatial patterns that are like the one seen in the 3-year difference composite (**Fig. 8c**).



430

Figure 8. TROPOMI-derived composites of 2019–2021 mean tropospheric NO₂ vertical column densities in the Lake Michigan region during: (a) weekdays, (b) weekends, and (c) the difference between them (weekend – weekday). Mean 10-meter winds are represented by arrows.

435

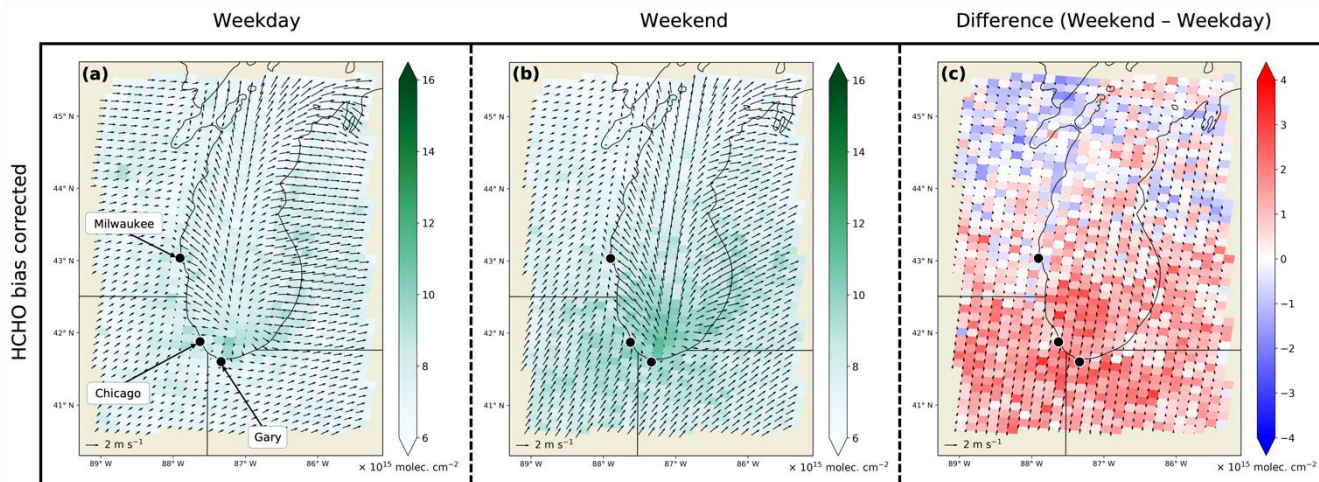
Figure 9 displays bias corrected composite mean tropospheric HCHO VCDs during weekdays and weekends, along with mean 10-meter wind vectors. **Figure S4** and **Table S6** detail the results of the bias correcting procedure. The spatial distribution of weekday HCHO VCDs is relatively homogenous (**Fig. 9a**), while on weekends there are higher HCHO VCDs over the southern part of the domain (**Fig. 9b**). **Figure 9c**, the difference between the composites, shows a north-south change in the sign of the differences. Weekend HCHO VCDs are higher over the southern part of the domain and lower over some northern parts of the

440

domain. K-S test results show that the differences between the composites are statistically significant (median p-value = 0; **Table S4**). The spatial pattern in the 3-year composite difference plot can be explained by looking at the plots for individual years (**Fig. S5**). In 2019 and 2021, weekend HCHO VCDs are higher throughout most of the domain, but particularly in the south. In 2020, the northern part of the domain clearly has lower weekend HCHO VCDs. Overall, the average difference in the 3-year composite is an increase of 0.59×10^{15} molec. cm⁻² on weekends. This increase could be due to NO_x emissions

445

differences between weekdays and weekends. For example, the principal sink of NO_x is oxidation by hydroxyl radicals (OH) to nitric acid (Jacob, 1999); therefore, lower weekend NO_x levels in the CMA could lead to increased OH concentrations and thus increased production of secondary HCHO in the southern part of the domain. Further research is needed to investigate this hypothesis.



450

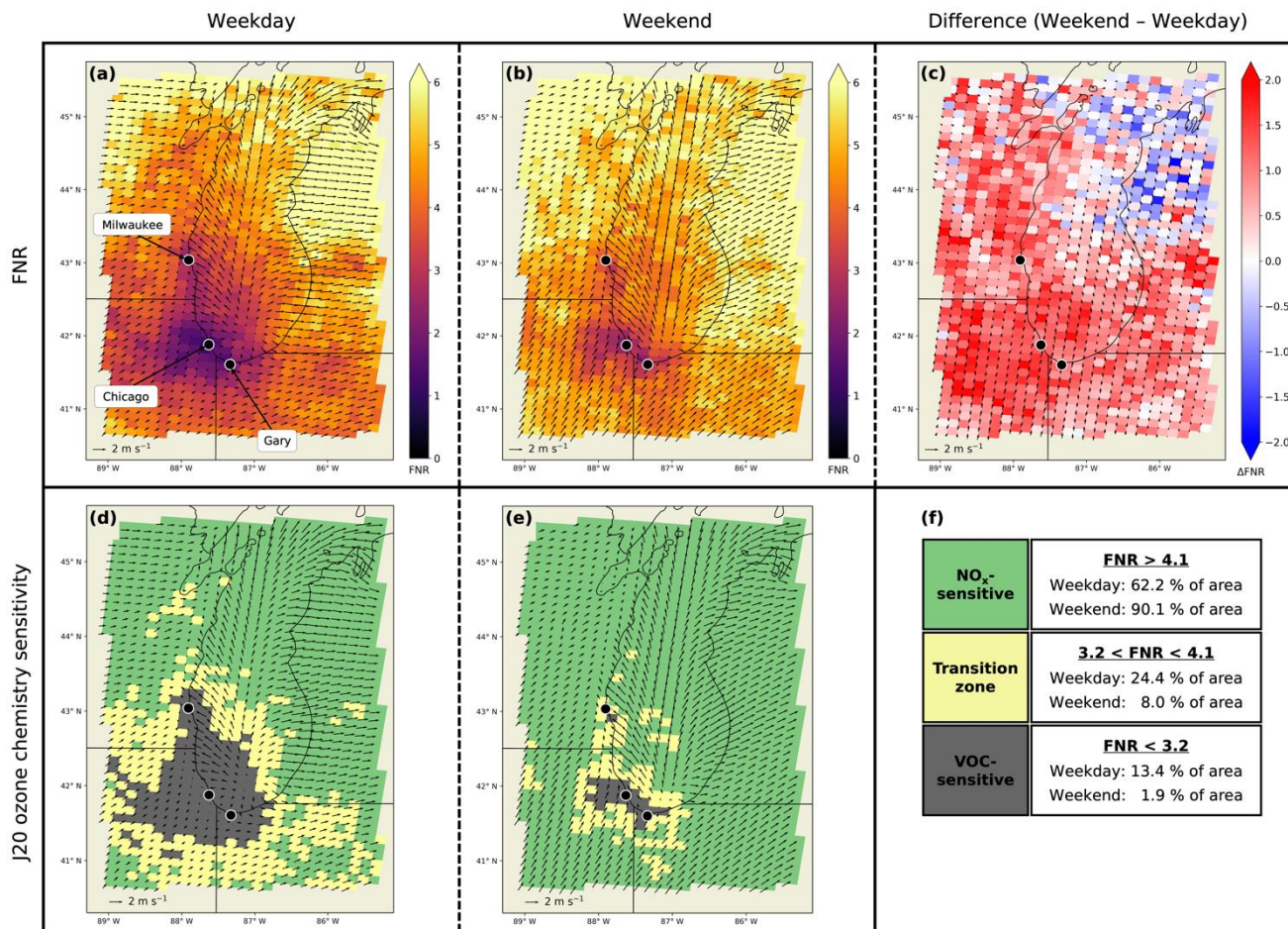
Figure 9. TROPOMI-derived composites of 2019–2021 bias corrected mean tropospheric HCHO vertical column densities in the Lake Michigan region during: (a) weekdays, (b) weekends, and (c) the difference between them (weekend – weekday). Mean 10-meter winds are represented by arrows.

455 **Figure 10** displays composite FNR values during weekdays (**Fig. 10a**) and weekends (**Fig. 10b**), along with mean 10-meter winds. In both composites, the lowest FNR values occur in the CMA, its surroundings, and north along the eastern Illinois and Wisconsin shorelines. **Figure 10c**, the difference between composites, shows that mean FNR values increase for much of the domain on weekends, indicating greater O₃ chemistry sensitivity to NO_x. K-S test results show that the differences between the composites are statistically significant (median p-value = 0; **Table S4**). When the FNR values are interpreted using the J20

460 thresholds, we see notable geographical differences in O₃ chemistry sensitivity between weekdays (**Fig. 10d**) and weekends (**Fig. 10e**). The area classified as VOC-sensitive decreases from 13.4 % on weekdays to 1.9 % on weekends (**Fig. 10f**). Only the urban core of Chicago, industrial areas near Gary, and a single grid box to the south of Milwaukee remain VOC-sensitive on weekends. The transition zone also decreases from 24.4 % to 8.0 % on weekends (**Fig. 10f**). The area classified as NO_x-sensitive increases from 62.2 % to 90.1 % on weekends (**Fig. 10f**), largely due to the areas in southern Wisconsin, northern

465 Indiana, and the CMA surroundings changing from VOC-sensitive or transitional to becoming NO_x-sensitive. These changes can be explained by lower NO₂ VCDs in the western part of the domain, particularly in the CMA, and higher HCHO VCDs in the southern part of the domain, resulting in higher FNR values and increasingly NO_x-sensitive O₃ chemistry. Similar differences between weekdays and weekends are seen for individual years. **Figure S6** shows the FNR results and J20 interpretations using the non-biased corrected HCHO composites. Bias correcting led to more grid boxes classified as VOC-

470 sensitive or transitional in **Fig. 10** compared to **Fig. S6**. However, the spatial patterns in the FNR difference plots appear the same.



475 **Figure 10.** TROPOMI-derived 2019–2021 FNR values in the Lake Michigan region during: (a) weekdays, (b) weekends, and (c) the
 difference between them (weekend – weekday). J20 threshold interpretation of 2019–2021 ozone chemistry during: (d) weekdays, (e)
 weekends, and (f) the percent of the domain area classified as each J20 sensitivity regime. Mean 10-meter winds are represented by arrows.

3.3 Limitations

480 The use of FNRs derived from TROPOMI satellite retrievals to indicate surface O₃ chemistry sensitivity has limitations. First,
 to minimize the impacts of noisy TROPOMI HCHO retrievals, we temporally aggregated the data into seasonal composites.
 Through this process we lose the ability to detect day-to-day changes in O₃ sensitivity chemistry. Furthermore, S5P is a sun-
 synchronous polar-orbiting satellite, and TROPOMI provides daily measurements at about 13:30 local solar time. However,
 the sensitivity of O₃ levels to NO_x and VOCs can change as the atmospheric concentrations of these gases change on shorter
 485 timescales (e.g., hourly). Higher temporal and spatial resolution satellite measurements are needed to analyse the hourly
 fluctuations in O₃ chemistry sensitivity from space-based instruments. Additionally, TROPOMI data represent tropospheric

vertical column densities, which are influenced by the vertical profiles of HCHO and NO₂. FNRs of the full tropospheric column are often different than the boundary layer FNRs that better represent surface O₃ chemistry sensitivity (Jin et al., 2017; Sourì et al., 2023). Finally, as discussed in the methodology section, we use the J20 OMI-derived thresholds to interpret
490 TROPOMI FNRs. There are many differences between the OMI and TROPOMI instruments and their errors. As such, our interpretations of the changes in O₃ chemistry sensitivity between composite categories are best viewed through a qualitative lens.

4 Summary and conclusions

We created mean formaldehyde to nitrogen dioxide ratio (HCHO/NO₂; “FNR”) composites using 2019–2021 S5P TROPOMI
495 satellite data to assess changes in ozone chemistry sensitivity of the Lake Michigan region. During the compositing process, we identified a high HCHO artifact over the Lake Michigan water surface, likely due to the coarse resolution of the surface albedo dataset used in the TROPOMI HCHO retrieval. After bias correcting the artifact, we compared O₃ season days to Chicago metropolitan area (CMA) exceedance days and found that higher NO₂ VCDs, HCHO VCDs, and FNR values are seen throughout the study domain on exceedance days. TROPOMI FNR composites interpreted using the Jin et al. (2020; “J20”) thresholds show that the urban cores of Milwaukee, Chicago, and Gary remain VOC-sensitive on exceedance days as the
500 higher NO₂ VCDs in these areas counterbalance the regionally higher HCHO VCDs. The areal extent of the domain classified as having transitional O₃ chemistry drops in value by 40 % during exceedance days, mostly due to the CMA-Wisconsin traffic corridor and the areas surrounding the CMA becoming more NO_x-sensitive. The rest of the region is still NO_x-sensitive during CMA exceedance days, but even more so (as indicated by higher FNR values) due to increased HCHO VCDs. Ten-meter wind
505 analysis data shows that the lake breeze circulation along the western Lake Michigan coastline is stronger during CMA exceedance days. Both higher HCHO VCDs and the stronger lake breeze can be explained by higher land surface temperatures on exceedance days, which we showed to be true using model analysis 2-meter temperature data. Overall, our analyses suggest that VOC emissions controls in major urban areas and NO_x emissions controls throughout the entire domain are necessary to decrease O₃ levels in the Lake Michigan region. Furthermore, our findings are comparable to those of Tao et al. (2022) who
510 conducted identical analyses for New York City. This implies that the results of this work are applicable to other coastal urban environments with similar O₃ exceedance problems.

When comparing weekdays and weekends, we see higher FNR values throughout much of the domain on weekends, indicating increasingly NO_x-sensitive O₃ chemistry. The areas classified as transitional and VOC-sensitive decrease by 67 % and 86 %, respectively. These changes are driven by lower NO₂ VCDs in urban areas, particularly in Chicago, and higher HCHO VCDs
515 in the southern part of the domain on weekends. Although lower weekend NO₂ VCDs can mostly be explained by lower traffic volumes on weekends, the cause of higher weekend HCHO VCDs requires further research. Additionally, we find no

significant differences in 2-meter temperature and 10-meter wind speed, direction, and divergence between weekdays and weekends.

520

We also analysed composites for 2019, 2020, and 2021 individually to look for any impacts due to the COVID-19 pandemic. There is a clear COVID-19 signal in NO₂ as the maximum VCD in all composites are higher in 2019 compared to 2020 and 2021. We see another possible signal in the difference between weekday and weekend HCHO VCDs. In 2019 and 2021, HCHO VCDs are higher on average during weekdays while they are slightly lower on average during weekends in 2020. Despite these differences among individual years, the general spatial distribution of FNRs and O₃ chemistry sensitivities largely remain the same from 2019–2021. Jing and Goldberg (2022) found that meteorology, as opposed to reduced NO_x emissions alone, explains a lot of the differences in O₃ production between 2020 (“the COVID-year”) and the two previous “non-COVID” years (2018/2019).

525

530 Future geostationary satellite instruments, such as the NASA Tropospheric Emissions: Monitoring of Pollution (TEMPO) set to launch in 2023 (Zoogman et al., 2017) and the ESA SENTINEL-4 set to launch in 2024 (Gulde et al., 2017), will make measurements of HCHO and NO₂ in hourly intervals over the United States and Europe, respectively. The datasets produced by these instruments will provide researchers with new opportunities to explore the viability of using satellite-derived FNRs to infer surface ozone–NO_x–VOC sensitivity at unprecedented spatiotemporal scales.

535 **Code & data availability**

Python scripts used to generate composites of TROPOMI data as well as the TROPOMI composite data files we created in netCDF format are available upon request (send correspondence to acdan@wisc.edu). We downloaded TROPOMI HCHO data from the NASA Goddard Earth Sciences Data and Information Services Center (GES DISC) website: <https://disc.gsfc.nasa.gov/>. The reprocessed S5P-PAL TROPOMI NO₂ data can be downloaded from: <https://data-portal.s5p-pal.com/products/no2.html>. The surface O₃ data we used to identify exceedance days can be downloaded from the U.S. EPA Air Data website: <https://www.epa.gov/outdoor-air-quality-data>.

540

Author contribution

J. J. M. Acdan’s contributions include: (1) acquiring and processing TROPOMI data, (2) identifying O₃ exceedance days from surface data, (3) visualizing all data, (4) developing the methodologies, (5) interpreting the results, and (6) writing, reviewing, and editing drafts of this manuscript. R. B. Pierce’s contributions include: (1) participating in the conceptualization of the study, (2) developing the methodologies, (3) supervising the project, (4) interpreting the results, and (5) reviewing and editing drafts of this manuscript. A. F. Dickens’s, Z. Adelman’s, and T. Nergui’s contributions include: (1) conceptualizing the

545

research project, (2) supervising the project, (3) reviewing and editing drafts of this manuscript, and (4) providing funding support. A. F. Dickens was additionally involved in the interpretation of the results.

550 **Competing interests**

The authors declare that they have no conflict of interest.

Acknowledgements

We acknowledge funding support from the Lake Michigan Air Directors Consortium (LADCO).

References

- 555 Acdan, J., Vermeuel, M., Bertram, T. H., and Pierce, R. B: Observation-based analyses of the sensitivity of ozone formation in the Lake Michigan region to NO_x and VOC Emissions [Final report prepared for the Lake Michigan Air Directors Consortium], Accessed: 21 September 2022, https://www.ladco.org/wp-content/uploads/Projects/Ozone/2020_WI-DNR_OBM_Analysis/LADCO_FinalReport_2020.pdf, 2020.
- 560 Boersma, K. F., Eskes, H. J., Richter, A., De Smedt, I., Lorente, A., Beirle, S., van Geffen, J. H. G. M., Zara, M., Peters, E., Van Roozendaal, M., Wagner, T., Maasackers, J. D., van der A, R. J., Nightingale, J., De Rudder, A., Irie, H., Pinardi, G., Lambert, J.-C., and Compernelle, S. C.: Improving algorithms and uncertainty estimates for satellite NO₂ retrievals: results from the quality assurance for the essential climate variables (QA4ECV) project, *Atmos. Meas. Tech.*, 11, 6651–6678, <https://doi.org/10.5194/amt-11-6651-2018>, 2018.
- 565 Chang, C. Y., Faust, E., Hou, X., Lee, P., Kim, H. C., Hedquist, B. C., and Liao, K. J.: Investigating ambient ozone formation regimes in neighboring cities of shale plays in the Northeast United States using photochemical modeling and satellite retrievals, *Atmos. Environ.*, 142, 152–170, <https://doi.org/10.1016/j.atmosenv.2016.06.058>, 2016.
- 570 Cleary, P. A., Dickens, A., McIlquham, M., Sanchez, M., Geib K., Hedberg C., Hupy J., Watson H. W., Fuoco M., Olson E. R., Pierce R. B., Stanier, C., Long, R., Valin, L., Conley, S., and Smith, M.: Impacts of lake breeze meteorology on ozone gradient observations along Lake Michigan shorelines in Wisconsin, *Atmos. Environ.*, 269, 118834, <https://doi.org/10.1016/j.atmosenv.2021.118834>, 2022.

575 De Smedt, I., Pinardi, G., Vigouroux, C., Compernelle, S., Bais, A., Benavent, N., Boersma, F., Chan, K.-L., Donner, S.,
Eichmann, K.-U., Hedelt, P., Hendrick, F., Irie, H., Kumar, V., Lambert, J.-C., Langerock, B., Lerot, C., Liu, C., Loyola, D.,
Piters, A., Richter, A., Rivera Cárdenas, C., Romahn, F., Ryan, R. G., Sinha, V., Theys, N., Vlietinck, J., Wagner, T., Wang,
T., Yu, H., and Van Roozendael, M.: Comparative assessment of TROPOMI and OMI formaldehyde observations and
validation against MAX-DOAS network column measurements, *Atmos. Chem. Phys.*, 21, 12561–12593,
580 <https://doi.org/10.5194/acp-21-12561-2021>, 2021.

De Smedt, I., Romahn, F., and Eichmann, K.-U.: S5P mission performance centre formaldehyde [L2__HCHO__] readme,
Accessed: 19 February 2023, <https://sentinel.esa.int/documents/247904/3541451/Sentinel-5P-Formaldehyde-Readme.pdf>,
2022.

585

De Smedt, I., Theys, N., Yu, H., Danckaert, T., Lerot, C., Compernelle, S., Van Roozendael, M., Richter, A., Hilboll, A.,
Peters, E., Pedergnana, M., Loyola, D., Beirle, S., Wagner, T., Eskes, H., van Geffen, J., Boersma, K. F., and Veeffkind, P.:
Algorithm theoretical baseline for formaldehyde retrievals from S5P TROPOMI and from the QA4ECV project, *Atmos. Meas.*
Tech., 11, 2395–2426, <https://doi.org/10.5194/amt-11-2395-2018>, 2018.

590

Demetillo, M. A. G., Harkins, C., McDonald, B. C., Chodrow, P. S., Sun, K., and Pusede, S. E.: Space-based observational
constraints on NO₂ air pollution inequality from diesel traffic in major US cities, *Geophys. Res. Lett.*, 48(17), e2021GL094333,
<https://doi.org/10.1029/2021GL094333>, 2021.

595 Duncan, B. N., Yoshida, Y., Olson, J. R., Sillman, S., Martin, R. V., Lamsal, L., Hu, Y., Pickering, K. E., Retscher, C., Allen,
D. J., and Crawford, J. H.: Application of OMI observations to a space-based indicator of NO_x and VOC controls on surface
ozone formation. *Atmos. Environ.*, 44(18), 2213–2223. <https://doi.org/10.1016/j.atmosenv.2010.03.010>, 2010.

Dye, T. S., Roberts, P. T., and Korc, M. E.: Observations of transport processes for ozone and ozone precursors during the
600 1991 Lake Michigan Ozone Study, *J. Appl. Meteorol. Climatol.*, 34(8), 1877–1889, [https://doi.org/10.1175/1520-0450\(1995\)034%3C1877:OOTPFO%3E2.0.CO;2](https://doi.org/10.1175/1520-0450(1995)034%3C1877:OOTPFO%3E2.0.CO;2), 1995.

Eskes, H. J., and Eichmann, K.-U.: S5P mission performance centre nitrogen dioxide [L2__NO2__] readme, Accessed: 19
February 2023, [https://sentinel.esa.int/documents/247904/3541451/Sentinel-5P-Nitrogen-Dioxide-Level-2-Product-Readme-](https://sentinel.esa.int/documents/247904/3541451/Sentinel-5P-Nitrogen-Dioxide-Level-2-Product-Readme-File)
605 [File](https://sentinel.esa.int/documents/247904/3541451/Sentinel-5P-Nitrogen-Dioxide-Level-2-Product-Readme-File), 2022.

German Aerospace Center (DLR): Sentinel-5P TROPOMI Tropospheric Formaldehyde HCHO 1-Orbit L2 7km x 3.5km (Copernicus Sentinel data processed by ESA), Greenbelt, MD, USA, Goddard Earth Sciences Data and Information Services Center (GES DISC), Accessed: 11 October 2021, <https://doi.org/10.5270/S5P-tjlxfd2>, 2019.

610

German Aerospace Center (DLR): Sentinel-5P TROPOMI Tropospheric Formaldehyde HCHO 1-Orbit L2 5.5km x 3.5km (Copernicus Sentinel data processed by ESA), Greenbelt, MD, USA, Goddard Earth Sciences Data and Information Services Center (GES DISC), Accessed: 11 October 2021, <https://doi.org/10.5270/S5P-vg1i7t0>, 2020.

615 Gulde, S. T., Kolm, M. G., Smith, D. J., Maurer, R., Bazalgette Courrèges-Lacoste, G., Sallusti, M., and Bagnasco, G.: Sentinel 4: a geostationary imaging UVN spectrometer for air quality monitoring: status of design, performance and development, International Conference on Space Optics — ICSSO 2014, Proceedings Volume 10563, 1056341, <https://doi.org/10.1117/12.2304099>, 2017.

620 Haagen-Smit, A. J.: Chemistry and physiology of Los Angeles smog, *Ind. Eng. Chem.*, 44(6), 1342–1346. <https://doi.org/10.1021/ie50510a045>, 1952.

Jacob, D. J.: Introduction to atmospheric chemistry, Princeton University Press, <https://doi.org/10.1515/9781400841547>, 1999.

625 Jacob, D. J.: Heterogeneous chemistry and tropospheric ozone, *Atmos. Environ.*, 34(12–14), 2131–2159, [https://doi.org/10.1016/S1352-2310\(99\)00462-8](https://doi.org/10.1016/S1352-2310(99)00462-8), 2000.

Jerrett, M., Burnett, R. T., Pope III, C. A., Ito, K., Thurston, G., Krewski, D., Shi, Y., Calle, E., and Thun, M.: Long-term ozone exposure and mortality, *N. Engl. J. Med.*, 360(11), 1085–1095, <https://doi.org/10.1056/NEJMoa0803894>, 2009.

630

Jin, X., Fiore, A. M., Boersma, K. F., De Smedt, I., and Valin, L.: Inferring changes in summertime surface ozone–NO_x–VOC chemistry over U.S. urban areas from two decades of satellite and ground-based observations, *Environ. Sci. Tech.*, 54(11), 6518–6529, <https://doi.org/10.1021/acs.est.9b07785>, 2020.

635 Jin, X., Fiore, A. M., Murray, L. T., Valin, L. C., Lamsal, L. N., Duncan, B., Boersma, K. F., De Smedt, I., Gonzalez Abad, G., Chance, K., and Tonnesen, G. S.: Evaluating a space-based indicator of surface ozone–NO_x–VOC sensitivity over midlatitude source regions and application to decadal trends. *Journal of Geophysical Research: Atmospheres*, 122(19), 10439–10461, <https://doi.org/10.1002/2017JD026720>, 2017.

- 640 Jin, X., and Holloway, T.: Spatial and temporal variability of ozone sensitivity over China observed from the Ozone Monitoring Instrument, *J. Geophys. Res. Atmos.*, 120(14), 7229–7246, <https://doi.org/10.1002/2015JD023250>, 2015.
- Jing, P., and Goldberg, D.: Influence of conducive weather on ozone in the presence of reduced NO_x emissions: a case study in Chicago during the 2020 lockdowns, *Atmos. Pollut. Res.*, 13(2), 101313, <https://doi.org/10.1016/j.apr.2021.101313>, 2022.
- 645 Kalnay-Rivas, and Hoitsma, D.: Documentation of the fourth order band model [NASA technical memorandum 80608], Accessed: 6 June 2022, <https://ntrs.nasa.gov/api/citations/19800009376/downloads/19800009376.pdf>, 1979.
- Kleipool, Q. L., Dobber, M. R., de Haan, J. F. and Levelt, P. F.: Earth surface reflectance climatology from 3 years of OMI
650 data, *J. Geophys. Res.*, 113(D18), D18308, <https://doi.org/10.1029/2008JD010290>, 2008.
- Koninklijk Nederlands Meteorologisch Instituut (KNMI): Sentinel-5P Product Algorithm Laboratory (S5P-PAL) Nitrogen Dioxide v02.03.01 (Copernicus Sentinel data processed by ESA), Accessed: 19 January 2023, <https://data-portal.s5p-pal.com/products/no2.html>, 2021.
- 655 Laird, N. F., Kristovich, D. A. R., Liang, X.-Z., Arritt, R. W., and Labas, K.: Lake Michigan Lake breezes: climatology, local forcing, and synoptic environment, *J. Appl. Meteorol. Climatol.*, 40(3), 409–424, [https://doi.org/10.1175/1520-0450\(2001\)040%3C0409:LMLBCL%3E2.0.CO;2](https://doi.org/10.1175/1520-0450(2001)040%3C0409:LMLBCL%3E2.0.CO;2), 2001.
- 660 Lin, M., Fiore, A., Horowitz, L. W., Langford, A. O., Oltmans, S. J., Tarasick, D., and Rieder, H. E.: Climate variability modulates western US ozone air quality in spring via deep stratospheric intrusions, *Nat. Commun.*, 6, 7105, <https://doi.org/10.1038/ncomms8105>, 2015.
- Lu, C. H., and Chang, J. S.: On the indicator-based approach to assess ozone sensitivities and emissions features, *J. Geophys. Res.*, 103(D3): 3453–3462, <https://doi.org/10.1029/97JD03128>, 1998.
- 665 Ludewig, A., Kleipool, Q., Bartstra, R., Landzaat, R., Leloux, J., Loots, E., Meijering, P., van der Plas, E., Rozemeijer, N., Vonk, F., and Veeffkind, P.: In-flight calibration results of the TROPOMI payload on board the Sentinel-5 Precursor satellite, *Atmos. Meas. Tech.*, 13, 3561–3580, <https://doi.org/10.5194/amt-13-3561-2020>, 2020.
- 670 Lyons, W. A.: The climatology and prediction of the Chicago lake breeze, *J. Appl. Meteorol. Climatol.*, 11(8), 1259–1270, [https://doi.org/10.1175/1520-0450\(1972\)011%3C1259:TCAPOT%3E2.0.CO;2](https://doi.org/10.1175/1520-0450(1972)011%3C1259:TCAPOT%3E2.0.CO;2), 1972.

- 675 Martin, R. V., Fiore, A. M., and Van Donkelaar, A.: Space-based diagnosis of surface ozone sensitivity to anthropogenic emissions, *Geophys. Res. Lett.*, 31(6), L06120, <https://doi.org/10.1029/2004GL019416>, 2004.
- Milford, J. B., Russell, A. G., and McRae, G. J.: A new approach to photochemical pollution control: implications of spatial patterns in pollutant responses to reductions in nitrogen oxides and reactive organic gas emissions, *Environ. Sci. Technol.*, 23(10), 1290–1301, <https://doi.org/10.1021/es00068a017>, 1989.
- 680 National Centers for Environmental Prediction (NCEP), National Weather Service, NOAA, U.S. Department of Commerce: NCEP North American Mesoscale (NAM) 12 km analysis (updated daily) [dataset], Research Data Archive at the National Center for Atmospheric Research, Computational and Information Systems Laboratory, Accessed: 19 January 2023, <https://doi.org/10.5065/G4RC-1N91>, 2015.
- 685 National Research Council: Rethinking the ozone problem in urban and regional air pollution, Washington, DC: The National Academies Press, <https://doi.org/10.17226/1889>, 1991.
- Nuvolone, D., Petri, D., and Voller, F.: The effects of ozone on human health, *Environ. Sci. Pollut. Res.*, 25, 8074–8088, <https://doi.org/10.1007/s11356-017-9239-3>, 2018.
- 690 Schroeder, J. R., Crawford, J. H., Fried, A., Walega, J., Weinheimer, A., Wisthaler, A., Muller, M., Mikoviny, T., Chen, G., Shook, M., Blake, D. R., and Tonnesen, G. S.: New insights into the column CH₂O/NO₂ ratio as an indicator of near-surface ozone sensitivity, *J. Geophys. Res. Atmos.*, 122(16), 8885–8907, <https://doi.org/10.1002/2017JD026781>, 2017.
- 695 Sillman, S.: The use of NO_y, H₂O₂, and HNO₃ as indicators for ozone-NO_x-hydrocarbon sensitivity in urban locations. *J. Geophys. Res. Atmos.*, 100(D7), 14175–14188, <http://dx.doi.org/10.1029/94JD02953>, 1995.
- Sillman, S.: The relation between ozone, NO_x and hydrocarbons in urban and polluted rural environments, *Atmospheric Environment*, 33(12), 1821–1845, [https://doi.org/10.1016/S1352-2310\(98\)00345-8](https://doi.org/10.1016/S1352-2310(98)00345-8), 1999.
- 700 Sillman, S., and Samson, P. J.: Impact of temperature on oxidant photochemistry in urban, polluted rural and remote environments, *J. Geophys. Res. Atmos.*, 100(D6), 11497–11508, <https://doi.org/10.1029/94JD02146>, 1995.
- 705 Souri, A. H., Johnson, M. S., Wolfe, G. M., Crawford, J. H., Fried, A., Wisthaler, A., Brune, W. H., Blake, D. R., Weinheimer, A. J., Verhoelst, T., Compernelle, S., Pinardi, G., Vigouroux, C., Langerock, B., Choi, S., Lamsal, L., Zhu, L., Sun, S., Cohen, R. C., Min, K.-E., Cho, C., Philip, S., Liu, X., and Chance, K.: Characterization of errors in satellite-based HCHO/NO₂

tropospheric column ratios with respect to chemistry, column-to-PBL translation, spatial representation, and retrieval uncertainties, *Atmos. Chem. Phys.*, 23(3), 1963–1986, <https://doi.org/10.5194/acp-23-1963-2023>, 2023.

710

Stanier, C. O., Pierce, R. B., Abdi-Oskouei, M., Adelman, Z. E., Al-Saadi, J., Alwe, H. D., Bertram, T. H., Carmichael, G. R., Christiansen, M. B., Cleary, P. A., Czarnetzki, A. C., Dickens, A. F., Fuoco, M. A., Hughes, D. D., Hupy, J. P., Janz, S. J., Judd, L. M., Kenski, D., Kowalewski, M. G., Long, R. W., Millet, D. B., Novak, G., Roozitalab, B., Shaw, S. L., Stone, E. A., Szykman, J., Valin, L., Vermeuel, M., Wagner, T. J., Whitehill, A. R., and Williams, D. J.: Overview of the Lake Michigan Ozone Study 2017, *Bull. Amer. Meteor.*, 102(12), E2207–E2225, <https://doi.org/10.1175/BAMS-D-20-0061.1>, 2021.

715

Tao, M., Fiore, A. M., Jin, X., Schiferl, L. D., Commane, R., Judd, L. M., Janz, S., Sullivan, J. T., Miller, P. J., Karambelas, A., Davis, S., Tzortziou, M., Valin, L., Whitehill, A., Civerolo, K., and Tian, Y.: Investigating changes in ozone formation chemistry during summertime pollution vents over the northeastern United States, *Environ. Sci. Technol.*, 56(22), 15312–15327, <https://doi.org/10.1021/acs.est.2c02972>, 2022.

720

Thornton, J. A., Wooldridge, P. J., Cohen, R. C., Martinez, M., Harder, H., Brune, W. H., Williams, E. J., Roberts, J. M., Fehsenfeld, F. C., Hall, S. R., Shetter, R. E., Wert, B. P., and Fried, A.: Ozone production rates as a function of NO_x abundances and HO_x production rates in the Nashville urban plume, *J. Geophys. Res.*, 107(D12), 4146, <https://doi.org/10.1029/2001JD000932>, 2002.

725

Tonnesen, G. S., and Dennis, R. L.: Analysis of radical propagation efficiency to assess ozone sensitivity to hydrocarbons and NO_x 2. Long-lived species as indicators of ozone concentration sensitivity. *J. Geophys. Res.*, 105(D7), 9227–9241. <https://doi.org/10.1029/1999JD900372>, 2000.

730

Turner, M. C., Jerrett, M., Pope II, C. A., Krewski, D., Gapstur, S. M., Diver, W. R., Beckerman, B. S., Marshall, J. D., Su, J., Crouse, D. L., and Burnett, R. T.: Long-term ozone exposure and mortality in a large prospective study, *Am. J. Respir. Crit. Care Med.*, 193(10), 1134–1142. <https://doi.org/10.1164/rccm.201508-1633OC>, 2016.

735

United States Environmental Protection Agency (U.S. EPA): 2017 National Emissions Inventory (NEI) data, Accessed: 29 June 2022, <https://www.epa.gov/air-emissions-inventories/2017-national-emissions-inventory-nei-data>, 2021.

United States Environmental Protection Agency (U.S. EPA): NAAQS table, Accessed: 27 June 2022, <https://www.epa.gov/criteria-air-pollutants/naaqs-table>, 2022a.

740

United States Environmental Protection Agency (U.S. EPA): 8-hour ozone nonattainment areas (2015 standard), Accessed: 27 June 2022, https://www3.epa.gov/airquality/greenbook/map8hr_2015.html, 2022b.

745 Valin, L. C., Fiore, A. M., Chance, K., and González Abad, G.: The role of OH production in interpreting the variability of CH₂O columns in the southeast U.S., *J. Geophys. Res. Atmos.*, 121(1), 478–493. <https://doi.org/10.1002/2015JD024012>, 2016.

van Geffen, J., Boersma, K. F., Eskes, H., Sneep, M., ter Linden, M., Zara, M., and Veeffkind, J. P.: S5P TROPOMI NO₂ slant column retrieval: method, stability, uncertainties and comparisons with OMI, *Atmos. Meas. Tech.*, 13, 1315–1335, <https://doi.org/10.5194/amt-13-1315-2020>, 2020.

750

van Geffen, J., Eskes, H. J., Boersma, K. F., and Veeffkind, J. P.: TROPOMI ATBD of the total and tropospheric NO₂ data products, Royal Netherlands Meteorological Institute, Accessed: 21 February 2023, <https://sentinel.esa.int/documents/247904/2476257/Sentinel-5P-TROPOMI-ATBD-NO2-data-products>, 2022a.

755 van Geffen, J., Eskes, H., Compernelle, S., Pinardi, G., Verhoelst, T., Lambert, J.-C., Sneep, M., ter Linden, M., Ludewig, A., Boersma, K. F., and Veeffkind, J. P.: Sentinel-5P TROPOMI NO₂ retrieval: impact of version v2.2 improvements and comparisons with OMI and ground-based data, *Atmos. Meas. Tech.*, 15, 2037–2060, <https://doi.org/10.5194/amt-15-2037-2022>, 2022b.

760 Veeffkind, J. P., Aben, I., McMullan, K., Förster, H., de Vries, J., Otter, G., Claas, J., Eskes, H. J., de Haan, J. F., Kleipool, Q., van Weele, M., Hasekamp, O., Hoogeveen, R., Landgraf, J., Snel, R., Tol, P., Ingmann, P., Voors, R., Kruijzinga, B., Vink, R., Visser, H., and Levelt, P. F.: TROPOMI on the ESA Sentinel-5 Precursor: A GMES mission for global observations of the atmospheric composition for climate, air quality and ozone layer applications, *Remote Sens. Environ.*, 120, 70–83. <https://doi.org/10.1016/j.rse.2011.09.027>, 2012.

765

Vermeuel, M. P., Novak, G. A., Alwe, H. D., Hughes, D. D., Kaleel, R., Dickens, A. F., Kenski, D., Czarnetzki, A. C., Stone, E. A., Stanier, C. O., Pierce, R. B., Millet, D. B., and Bertram, T. H.: Sensitivity of ozone production to NO_x and VOC along the Lake Michigan coastline, *J. Geophys. Res. Atmos.*, 124(20), 10989–11006. <https://doi.org/10.1029/2019JD030842>, 2019.

770 Vigouroux, C., Langerock, B., Bauer Aquino, C. A., Blumenstock, T., Cheng, Z., De Mazière, M., De Smedt, I., Grutter, M., Hannigan, J. W., Jones, N., Kivi, R., Loyola, D., Lutsch, E., Mahieu, E., Makarova, M., Metzger, J.-M., Morino, I., Murata, I., Nagahama, T., Notholt, J., Ortega, I., Palm, M., Pinardi, G., Röhling, A., Smale, D., Stremme, W., Strong, K., Sussmann, R., Té, Y., van Roozendaal, M., Wang, P., and Winkler, H.: TROPOMI–Sentinel-5 Precursor formaldehyde validation using

- an extensive network of ground-based Fourier-transform infrared stations, *Atmos. Meas. Tech.*, 13, 3751–3767, 775 <https://doi.org/10.5194/amt-13-3751-2020>, 2020.
- Wagner, T. J., Czarnetzki, A. C., Christiansen, M., Pierce, R. B., Stanier, C. O., Dickens, A. F., and Eloranta, E. W.: Observations of the development and vertical structure of the lake-breeze circulation during the 2017 Lake Michigan Ozone Study, *J. Atmos. Sci.*, 79(4), 1005–1020, <https://doi.org/10.1175/JAS-D-20-0297.1>, 2022. 780
- Zoogman, P., Liu, X., Suleiman, R. M., Pennington, W. F., Flittner, D. E., Al-Saadi, J. A., Hilton, B. B., Nicks, D. K., Newchurch, M. J., Carr, J. L., Janz, S. J., Andraschko, M. R., Arola, A., Baker, B. D., Canova, B. P., Chan Miller, C., Cohen, R. C., Davis, J. E., Dussault, M. E., Edwards, D. P., Fishman, J., Ghulam, A., González Abad, G., Grutter, M., Herman, J. R., Houck, J., Jacob, D. J., Joiner, J., Kerridge, B. J., Kim, J., Krotkov, N. A., Lamsal, L., Li, C., Lindfors, A., Martin, R. V., 785 McElroy, C. T., McLinden, C., Natraj, V., Neil, D. O., Nowlan, C. R., O’Sullivan, E. J., Palmer, P. I., Pierce, R. B., Pippin, M. R., Saiz-Lopez, A., Spurr, R. J. D., Szykman, J. J., Torres, O., Veefkind, J. P., Veihelmann, B., Wang, H., Wang, J., and Chance, K.: Tropospheric emissions: Monitoring of pollution (TEMPO), *J. Quant. Spectrosc. Radiat. Transfer*, 186, 17–39, <https://doi.org/10.1016/j.jqsrt.2016.05.008>, 2017.