

Modelling the barotropic sea level in the Mediterranean Sea using data assimilation

Marco Bajo¹, Christian Ferrarin¹, Georg Umgiesser^{1,2}, Andrea Bonometto³, and Elisa Coraci³

¹Institute of Marine Sciences, National Research Council, Castello 2737/F, 30122 Venice, Italy

²Klaipėda University, Coastal Research and Planning Institute, H.Manto 84, 92294 Klaipėda, Lithuania

³Italian Institute for Environmental Protection and Research, S. Marco, 4665, 30122 Venice, Italy

Correspondence: Marco Bajo (marco.bajo@ve.ismar.cnr.it)

Abstract. This paper analyses the variability of the sea level barotropic components in the Mediterranean Sea and their reproduction using a hydrodynamic model ~~;~~with and without ~~applying~~ data assimilation. The impact of data assimilation is considered both in reanalysis and short-forecast simulations. We used a two-dimensional finite element model paired with an ensemble Kalman Filter, which assimilated hourly sea-level data from 50 stations in the Mediterranean basin. The results show a significant improvement given by data assimilation in the reanalysis of the astronomical tide, the surge and the barotropic total sea level, even in coastal areas ~~and~~ far from the assimilated stations (e.g., the ~~Eastern south-eastern~~ Mediterranean Sea). ~~The As the reanalysis simulations, the~~ forecast simulations, which start from analysis states, improve ~~as well,~~ especially on the first day (37% average error reduction) and ~~;~~~~in the surge and total sea level simulations,~~ when seiche oscillations are triggered. Since seiches are free ~~barotropic~~ oscillations depending only on the initial state, ~~they are corrected very effectively by their~~ reproduction improves very effectively with data assimilation. Finally, we estimate ~~their periods, which are the periods of the basin's normal barotropic modes~~the periods and the energy of these oscillations by means of spectral analysis, both in the Adriatic Sea, where they have been extensively studied, and in the Mediterranean Sea, where the present documentation is scarce. ~~While the periods are well reproduced by the model even without data assimilation, their energy shows a good improvement using it.~~

15 1 Introduction

Due to its historical and geopolitical importance, the Mediterranean Sea (Fig. 1) ~~was is~~ extensively studied from every point of view, including the physical one. Marine circulation, the main physical, chemical and biological parameters are the subject of numerous ~~research~~~~researches~~ at various spatial and temporal scales. As regards the sea level, the most extreme phenomena, which are ~~of a barotropic nature linked to the meteorological situation caused by meteorological storms~~ in conjunction with ~~the~~ astronomical tide (Cavaleri et al., 2019; Ferrarin et al., 2021), ~~are concentrated~~ happen often in the northern Adriatic Sea (Fig. 1). In the rest of the Mediterranean basin, these phenomena are less frequent and, ~~usually,~~ the sea level variations ~~are studied~~ on a longer time scale~~and,~~ linked to the baroclinic circulation~~are usually studied. In any case, barotropic sea level variations, which have a time scale of a few hours or less and a typical length of tensto~~. ~~However, even in these parts of the Mediterranean Sea, barotropic variations of the sea level of few hours and tens/hundreds of kilometres, have a certain~~

25 importance ~~throughout the Mediterranean and can be subdivided.~~ They can be divided, according to their forcing, into the astronomical tide, ~~surge and free seiche oscillations~~ surges and seiches (Pugh, 1996). ~~In the~~

~~In the central and northern~~ Adriatic Sea, the ~~shallow continental shelf, in the central and northern parts,~~ shallowness of the continental shelf favours the growth of ~~these sea level signals~~ sea level perturbations. Indeed, the northern Adriatic Sea is one of the Mediterranean regions (~~together with as~~ the Gulf of Gabes) experiencing the highest tidal ~~oscillation~~ oscillations (about 1 m

30 at spring tide; Tsimplis et al., 1995). ~~The presence, especially in autumn, of strong~~ Concerning the surge, the presence of strong autumn south-easterly winds (Sirocco), ~~which blow~~ blowing along the main axis of the basin, ~~favour~~ favours storm surge events in the north; events that can trigger seiche oscillations of considerable intensity (Međugorac et al., 2016). Therefore, the floods in the northern Adriatic coasts ~~, but also with minor intensity~~ but also in the rest of the Mediterranean coasts, ~~can~~

35 surge events. In densely populated cities with important cultural heritage, such as Venice and Dubrovnik in the Adriatic ~~basin~~ or Alexandria in the ~~eastern south-eastern~~ Mediterranean basin, it is essential to provide a correct forecast of the sea level at short lead time, from nowcasting up to about five days ahead, to alert the population and the authorities of possible flooding events. In this time window, tides ~~and surges,~~ surges and seiches are the main components influencing the sea level variations; ~~since sea level variations due to the rivers' run-off, which could be increased by a storm, are.~~ Other possible variations of

40 the sea level related to violent storms could be due to river run-offs, but this component is negligible in the Mediterranean Sea. ~~Regarding the situation outside~~ As asserted before, these phenomena are stronger in the Adriatic Sea, ~~the barotropic components of the sea level are much weaker. However,~~ but sometimes the western Mediterranean ~~basin~~ is subject to strong Mistral events (~~north-west wind~~) and ~~, in the southern part of the Mediterranean,~~ north-westerly winds) and the southern Mediterranean shows the formation of small but intense cyclones with tropical dynamics (called medicanes) ~~can sometimes~~

45 ~~form~~. These extreme weather ~~events~~ conditions have already caused flooding events in the past, even in areas traditionally not affected ~~by these events~~ (Scicchitano et al., 2021).

~~As mentioned earlier, surge events can trigger seiches. These oscillations~~ Regarding the seiches, they are triggered by surge events and have periods determined by the barotropic modes of ~~the a~~ basin. While the modes of the Adriatic Sea, being very energetic, have been well studied in the past, those of the Mediterranean Sea are ~~little known and, to our knowledge, there~~

50 ~~is only one scientific modelling work on them (Schwab and Rao, 1983)~~ not well known. Although a correct reproduction of seiche oscillations is ~~necessary mostly mandatory~~ in the Adriatic ~~, to correctly predict in case of~~ extreme events, ~~their correct reproduction improves the prediction of the total level also in the rest of~~ also in normal condition it improves the sea level both in the Adriatic and in the Mediterranean. Furthermore, the investigation of the normal barotropic modes of ~~oscillation of~~ a basin can ~~also be interesting also due to the fact that these modes can~~ be triggered by ~~much more extreme phenomena, such~~

55 ~~as~~ tsunami waves.

The predictability of ~~the various components of sea level tides and surges~~ depends on the predictability of ~~the forcings that trigger them~~ their forcings. The astronomical tide, due to its periodic nature, can be predicted with good accuracy where ~~sea level~~ in-situ sea level observations are available. ~~However, where~~ Where these observations lack, the tide ~~must~~ can be computed by altimeter data (Birol et al., 2017) or ~~by hydrodynamic models (using~~ using a hydrodynamic model (with good

60 bathymetry data). As regards the surge, in case of severe weather conditions, most of the ~~sea-level error~~ error on the sea level is due to this part. The ~~storm~~ surge has a non-periodic nature, depending on the surface wind and atmospheric pressure, ~~and, due to wrong meteorological forcing and, the error if the meteorological forcing is wrong, the errors~~ can be consistent (Barbariol et al., 2022). Surges can trigger seiches, which propagate ~~the following days carrying the initial error of the surge for several days as well as their errors~~, with different periods and decay times, depending on the ~~excited barotropic modes~~.

65 ~~To reduce these errors~~ barotropic modes which they follow. To reduce the errors of these sea-level components, data assimilation (DA) procedures can be used. DA aims to reduce the error of the state of a dynamic model at a fixed time by exploiting the available observations of quantities correlated to the model's variables (Kalnay, 2002; Evensen, 2009a; Carrassi et al., 2018). DA can be used both to improve the forecast, providing an accurate initial state, which is called ~~the analysis state~~ or to produce several analysis states to simulate past periods with ~~small reduced~~ errors (*reanalysis simulation*). ~~The reanalysis simulations, in which the best available forcings and boundary conditions and the best set of observations for DA are used, Usually, the reanalysis simulations~~ are much more accurate than analogous simulations made without the ~~use of the~~ DA (here referred to as *hindcast simulations*). ~~This is due to not only to the assimilation of all the available well-processed observations, but also, if possible, to the use of more accurate forcings and boundary conditions.~~

70 ~~In this work, we will~~ The main purpose of this work is to analyse the impact of DA in the reproduction of tides, surges, ~~seiches~~ and the total ~~barotropic sea level composed of sea level made by~~ these components, both in reanalysis and in forecast simulations, ~~with particular attention to the presence of seiches in the surge component~~. As regards the astronomical tide, the reanalysis simulation can be used to produce more accurate maps of the ~~spatial structure~~ amphidromic systems of its components, ~~with a good determination of the amphidromic points~~. Moreover, harmonic analyses can be executed at each point of the model's grid to determine the amplitudes and phases of the main components ~~and to make tide in order to obtain~~ forecasts in arbitrary locations. ~~Therefore, we will not consider forecast simulations of the tide.~~ The reanalysis of the surge and the total ~~barotropic~~ sea level, is useful mainly as a coastal product, to produce ~~past climatology~~ accurate past climatologies with a good reproduction of extreme events. ~~In~~ For example, in the Mediterranean Sea, where the coasts have a large extension compared to the basin's area and the weather ~~is~~ conditions are strongly influenced by the orography, ~~the hindcast products~~ hindcast model simulations, without DA, often suffer from underestimation ~~issues. We will test if DA can reduce these errors in the reanalysis simulations errors.~~

85 ~~The second use of DA that we consider in this paper is for the improvement of forecast simulations, which are executed with forecast boundary and forcing conditions. DA is used in a one-day period can be used not only for the reanalysis but also for the forecast, by improving the initial state of the system. In this work we use the DA one day~~ before each daily forecast, to create a final state of analysis from which to start the forecast simulation. ~~In this case, the~~ The DA improvement is due to the fact that the initial analysis state has a lower error than the one without DA (*background state*), ~~but the error of the forecast even if the error coming from the forcing and boundary condition cannot be corrected. The simulations are executed with~~ In summary, we run the simulations using a finite element hydrodynamic model, ~~assimilating and assimilating, in some of them, data from 50 sea-level coastal stations using with~~ an ensemble Kalman filter. ~~We run the simulations in a two-month period, November and December 2019, in which~~ The period considered is two-month long from the beginning of November to the

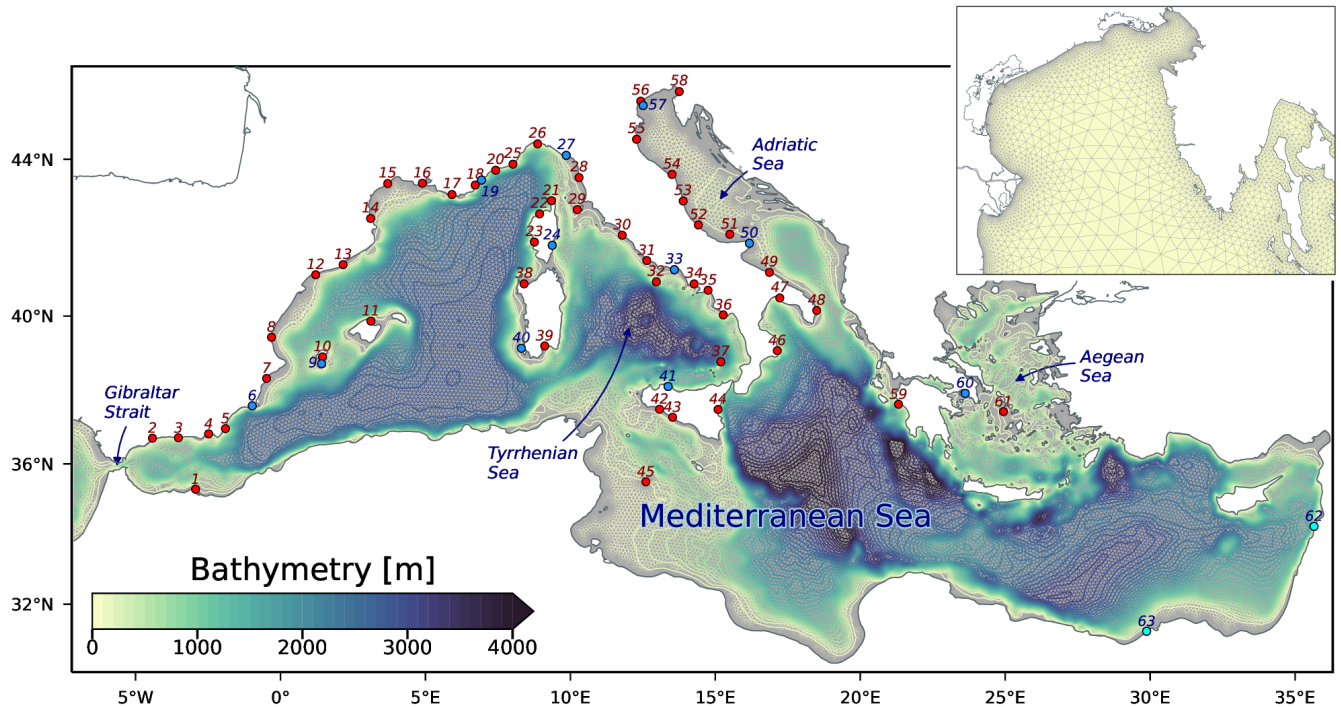


Figure 1. The big panel shows the unstructured grid and the bathymetry used by the model. In the small panel a zoom of the grid in the northern Adriatic Sea. The red and blue dots mark the ~~location-locations~~ of ~~assimilated-the assimilation~~ and validation tide gauges ; respectively.

95 ~~end of December 2019. In this period~~ one of the most extreme storm surge ~~events-event~~ was recorded in Venice ~~in-November~~ and very energetic seiche oscillations ~~were-recorded-in-December~~~~happened some weeks later~~.

In the following sections, we report the methodology, with a description of the hydrodynamic model (Section 2.1), the observation collection and processing (Section 2.2) and the DA method and setup (Section 2.3). The section ends with a description of all the simulations that we performed (Section 2.4). Then, we expose the results of the DA calibration (Section 3.1), the
 100 ~~hindcast/reanalysis simulations~~ (Section 3.2) and the forecast simulations (Section 3.3). The second part of Section 3.3 is dedicated to the description and reproduction in the forecast mode of the November and December ~~extreme-events-described-2019~~ ~~extreme events mentioned~~ before. Finally, the discussion (Section 4) and conclusions (Section 5) follow.

2 Methods

2.1 The hydrodynamic model

105 The hydrodynamic model we use is called SHYFEM (System of HydroDYNAMIC Finite Element Module - [v7.5.74](#)) and was created at the CNR in Venice (Umgiesser and Bergamasco, 1993), where it is largely developed [continuously](#). Its code is available [under an open-source license](#) and freely downloadable from the Web (<https://github.com/SHYFEM-model/shyfem>). SHYFEM is composed of a hydrodynamic core that solves the shallow water equations with the finite element technique and with a semi-implicit time-stepping algorithm, which allows a remarkable speed of execution. Various terms
110 in the equations can be turned on or off, such as [the](#) momentum advection terms, Coriolis terms, baroclinic terms and tidal potential. The model can be used in [two-two-](#) or three-dimensional modes and [allows](#) various formulations of bottom stress and wind stress [are available](#). Finally, the model can be coupled to various modules or [other](#) models (e.g., waves, Lagrangian, ecological).

In this application, we use a two-dimensional barotropic formulation given by the following equations:

$$\begin{aligned} \frac{dU}{dt} - fV &= -H \left(g \frac{\partial \zeta}{\partial x} + \frac{1}{\rho_w} \frac{\partial p_a}{\partial x} \right) + A_H \nabla^2 U + \frac{1}{\rho_w} (\tau_{wx} - \tau_{bx}) \\ 115 \quad \frac{dV}{dt} + fU &= -H \left(g \frac{\partial \zeta}{\partial y} + \frac{1}{\rho_w} \frac{\partial p_a}{\partial y} \right) + A_H \nabla^2 V + \frac{1}{\rho_w} (\tau_{wy} - \tau_{by}) \\ \frac{\partial \zeta}{\partial t} + \frac{\partial U}{\partial x} + \frac{\partial V}{\partial y} &= 0, \end{aligned} \quad (1)$$

where the independent variables are the time, t , and the spatial variables x and y . $U(x, y, t)$ and $V(x, y, t)$ are the transports along x and y , $f(y)$ is the Coriolis coefficient, $H(x, y, t)$ is the sum of the sea depth with $\zeta(x, y, t)$, which is the variable level with respect to the resting state; g is the gravitational acceleration, ρ_w is the average density of seawater, $p_a(x, y, t)$ is the atmospheric pressure at [the](#) sea level and A_H is the horizontal coefficient of turbulent viscosity, formulated with Smagorinsky
120 (1963), using a dimensionless coefficient equal to 0.2; while $\nabla^2[\cdot]$ is the two-dimensional Laplacian operator. $\tau_{bx}(x, y, t)$ and $\tau_{by}(x, y, t)$ are the components of the stress at the bottom, expressed with a linear-quadratic formulation with [coefficient-a coefficient equal to](#) 0.0025 (Bajo et al., 2019); $\tau_{wx}(x, y, t)$ and $\tau_{wy}(x, y, t)$ are the components of wind stress, expressed with the formulation proposed by Hersbach (2011) and with a Charnock coefficient equal to 0.02.

Furthermore, for the simulations that calculate the tidal level or the total sea level, the terms of [the](#) tidal potential are
125 also active and four semi-diurnal [components](#) (M_2 , S_2 , N_2 and K_2) and four diurnal components (K_1 , O_1 , Q_1 and P_1) are calculated. ~~This formulation or very similar formulations for SHYFEM have been used in the past with success in many works on the storm surge (Bajo et al., 2017, 2019; Cavaleri et al., 2019; Ferrarin et al., 2021) or the total sea level or the tide (Ferrarin et al., 2013, 2018).~~

The model is applied on a mesh of the Mediterranean Sea, which extends into the Atlantic Ocean up to about 7° W and has
130 about 163,000 triangular elements. The size of the elements is variable, with a gradually greater resolution from the open sea (element side length ~ 12 km), to the coasts (element side length ~ 500 m), as shown in Fig. 1. The bathymetry derives from

the 2020 dataset of the European Marine Observation and Data Network (<https://www.emodnet-bathymetry.eu/>), which was bilinearly interpolated on the mesh.

This model has already been used ~~successfully~~ in the past, with similar configurations, in ~~many~~ scientific works and is currently used in several operational systems for ~~the~~ sea level prediction. For example, the most extreme storm surge events that occurred in 1966, 2018 and 2019 were ~~studied and~~ simulated in Roland et al. (2009), Cavaleri et al. (2019) and Ferrarin et al. (2021). Various operational versions of the model with similar configurations have been used for over fifteen years at the high tide forecasting and warning centre (CPSM) in Venice (Bajo et al., 2007; Bajo and Umgiesser, 2010; Bajo, 2020) and at the Italian Institute for Environmental Protection and Research (ISPRA ~~), where~~ <https://www.venezia.isprambiente.it/ispra/modellistica>). ~~In this Institute,~~ a system similar to that ~~here described~~ ~~described in this paper~~ will be installed in the next months ~~(\ominus)~~. SHYFEM, with ~~and old version of DA~~ ~~an old DA system~~, was also used to assess the impact of altimeter data on storm surge forecasting (Bajo et al., 2017), and ~~with a~~ ~~using the~~ more recent DA ~~method~~ ~~system described in this paper~~ to study a particular seiche event (Bajo et al., 2019). As regards the reproduction of the astronomical tide in the Mediterranean ~~(and Black Sea)~~ ~~and Black seas~~, a first ~~specific~~ work has been successfully completed (Ferrarin et al., 2018), ~~but a preliminary~~ ~~total sea level operational system was set up earlier~~ (Ferrarin et al., 2013). Finally, there are numerous works performed with other ~~models in barotropic configuration~~ ~~, such as the one used here,~~ ~~hydrodynamic models with barotropic configuration~~ for the study and prediction of ~~surges, tides~~ ~~tides, surges, seiches~~ and sea level variations given by these components (see e.g., Flowerdew et al., 2010; Bertin et al., 2014; Fernández-Montblanc et al., 2019; Horsburgh et al., 2021; Byrne et al., 2021).

2.1.1 Surface ~~forcing~~ and lateral boundary ~~condition~~ ~~conditions and perturbation methods~~

The simulations use, as ~~forcing at the surface~~ ~~surface boundary condition~~, 10-m wind and mean sea level pressure hourly fields provided by the BOLAM atmospheric model (Mariani et al., 2015), which is hydrostatic and runs at 8 km of horizontal resolution. The model is nested in the ECMWF Integrated Forecasting System (IFS - <https://www.ecmwf.int/en/publications/ifs-documentation>). In the hindcast/reanalysis simulations, the surface forcing fields are made by the first forecast days chained together, while the forecast simulations, which are daily, use the entire forecast up to five days ahead.

The lateral boundary conditions are closed everywhere except at the western border in the Atlantic Ocean, near Gibraltar, where the sea level is imposed and the water transports are ~~free~~ ~~left free to adjust~~ (Dirichlet conditions). The open boundary was chosen outside the Mediterranean Sea to reduce the ~~associated error~~ ~~error inside the basin~~ and different sea level quantities are used, depending on the simulation type. For the simulations computing the total sea level we used the variable *Sea Surface Height (SSH)* by the Mediterranean Sea Physical Analysis and Forecast system (Clementi et al., 2021, https://doi.org/10.25423/CMCC/MEDSEA_ANALYSISFORECAST_PHY_006_013_EAS7), running at the Copernicus Monitoring Environment Marine Service (CMEMS). For the simulations computing only the surge, we used the "de-tided" SSH, available in the same dataset ~~and that we will call Non-Tidal Residual (NTR). This quantity~~ ~~,~~ ~~which~~ is the residual part ~~of~~ ~~remained after~~ the harmonic analysis of the SSH. Finally, the simulations computing only the tide use the difference between these two quantities (~~SSH-NTR~~). The SSH and the ~~NTR of the CMEMS model~~ ~~de-tided SSH~~ can contain a baroclinic part ~~;~~ ~~which cannot be filtered, but it is varying at a lower frequency.~~

~~In ensemble DA methods, the independence and the spread of the members improved by perturbing the forcings and the boundary conditions~~ which has lower-frequency variations and cannot be easily filtered out.

170 In the present work, in which the considered domain is relatively small compared to the speed of the barotropic perturbations, the lateral and surface boundary conditions greatly influence the solution of the equations of motion. Therefore, the physical problem can be defined more as "boundary driven" than "initial-state" driven and the perturbation of the surface/lateral boundary conditions is necessary to prevent the narrowing of the initial ensemble after a short time. In all the DA simulations, the members of the ensemble are created by perturbing the initial state and then the spread is maintained by the perturbation of the forcing, the boundary conditions and some model parameters. The perturbation of the initial state is performed only for the sea level (variable ζ in the eqs. 1), with a technique similar to that used for the atmospheric pressure (described later), while
175 ~~the water transports are not perturbed.~~

In the forecast simulations, the initial state is perturbed only in the first simulation, then the following daily simulations start from the states saved in the previous-day simulations. Even for the reanalysis simulations, the perturbation of the initial state is not very important, as the simulations last two months and the influence of the forcing and boundary conditions, as well as the assimilated observations, are far more important after some days. Therefore, in reanalysis the forcing and boundary conditions
180 are perturbed for the entire period of the simulations, while, in forecast, each simulation assimilates observations for 24 hours, during which conditions are perturbed, and then five days of deterministic forecast follow, starting from the analysis ensemble mean and using unperturbed forcings and boundary conditions.

The perturbations are calculated so that, for a scalar physical variable, the mean of the perturbed values should be approximately equal to the non-perturbed value and the standard deviation should resemble the estimated error; furthermore, the perturbations
185 must belong to a Gaussian distribution. We used this method for the conditions at the lateral open boundary, with the same perturbations in each node. A similar perturbation was used also for the value of the drag coefficient in the bottom stress, with a distribution centered at 0.0025 and with a standard deviation of 0.0005. In the DA simulations using the tidal forcing (tide and total sea level), a calibration factor for the loading tide (parameter *ltidec* in SHYFEM) is perturbed as well, with a mean value of 6.e-05 and a standard deviation of 1.e-05. ~~This was done for the DA simulations and the method is described in Section 2.3~~

190 Perturbing the two-dimensional atmospheric fields is more complex. We still impose the same condition for the mean and the standard deviation at each point, but the perturbations must have a spatial correlation and the atmospheric pressure perturbations should be linked to the wind perturbations. We therefore first perturbed the atmospheric pressure field, through a technique to generate two-dimensional pseudo-random fields (Evensen, 1994, 2003), imposing a decorrelation length of about 400 km and a standard deviation of 3.5 hPa. These values, slightly different from those used in Sakov et al. (2012), were
195 found empirically and they produce perturbations at a sub-synoptic scale, with a similar size to the typical Mediterranean cyclones (Ferrarin et al., 2021). From these fields of pressure perturbations, we calculated the corresponding perturbations for the velocity components. If the pressure perturbation in one point is δP , the perturbations for the wind components, in

geostrophic equilibrium, are:

$$\begin{aligned}\delta u &= -\frac{\delta P}{\delta y} \frac{1}{\rho_a f} \\ \delta v &= \frac{\delta P}{\delta x} \frac{1}{\rho_a f}.\end{aligned}\tag{2}$$

200 Using these perturbation fields to be applied to the unperturbed fields of wind and pressure at an instant t , we obtain perturbed fields with physical coherence. Again for the atmospheric fields, in addition to this kind of perturbation, a temporal perturbation has also been introduced in which, from a field at time t , an ensemble of equal fields is generated but with reference time $t + dt_n$, where dt_n are time perturbations belonging to a Gaussian distribution as well.

205 Finally, as regards the perturbations of the forcing and the boundary conditions that vary over time, the error at a given instant t_1 must be correlated to the error at the next instant, t_2 . This is defined as "red noise" and is implemented by calculating a weight dependent on the time interval between the two fields and by defining a decay time:

$$\alpha = 1 - \frac{t_2 - t_1}{\tau},\tag{3}$$

where τ is the decay time. The perturbation ξ_2 , at time t_2 , becomes a linear combination of the perturbation ξ_1 , at time t_1 , and the newly calculated perturbation ξ_2^* :

$$\xi_2 = \alpha \xi_1 + \sqrt{1 - \alpha^2} \xi_2^*.\tag{4}$$

2.2 Observations

2.2.1 In-situ data

Sea-level observations were retrieved from the European Joint Research Center database (<https://data.jrc.ec.europa.eu/>). As shown in Fig. 1, tide gauges are concentrated in the western and central Mediterranean Sea, mostly along the Spanish, French and Italian coasts, while on the northern African coast there is only one station (Melilla) and few stations are present in the eastern Mediterranean Sea. The Adriatic Sea has stations only along the Italian coast and not on the eastern coast, but they are still quite numerous. The stations in the Mediterranean Sea were divided into 50 stations to be assimilated and 13 ~~for~~ stations for the validation (Tab. A1). ~~Data is~~ The data are recorded every 10 minutes in the period of October-December 2019. We processed ~~it them~~ with the SELENE quality check software (<https://puertos-del-estado-medio-fisico.github.io/SELENE/>; Pérez et al., 2013) for spikes and outliers detection, stability test, date and time control, flagging and interpolation of short gaps. Subsequently, the quality-checked data were elaborated with the Python binding of UTide (<https://github.com/wesleybowman/UTide>; <http://www.po.gso.uri.edu/~codiga/utide/utide.htm>), based on the least squares fitting, to separate the tidal periodic part from the ~~non-periodic part~~ Non-Tidal Residual (NTR) in the total sea level. We kept the eight most energetic tidal constituents in the harmonic analysis ($M_2, S_2, N_2, K_2, K_1, O_1, P_1, Q_1$), which are the most important in the Mediterranean Sea (Ferrarin et al., 2018). The NTR was further processed by applying a 2-hour moving average, to remove high-frequency signals. The

harmonic analysis was not possible for stations 62 and 63, due to ~~a lack of the lack of enough~~ continuous data. Therefore, these stations were used only for the validation of the total sea level ~~for which the harmonic analysis is not necessary~~.

230 ~~The observations may have~~ ~~Finally, the observations from different stations have often different mean sea levels. Sometimes this is due to~~ different reference datum ~~according to, which depends on~~ the monitoring network ~~to which~~ they belong. Furthermore, the observed sea level can contain ~~a~~ low-frequency ~~components of~~ non-barotropic ~~origin part~~ due to salt and temperature gradients, as well as steric effects. Therefore, we ~~referred~~ ~~decided to refer~~ all the observations to the ~~site-specific~~ two-month mean sea level ~~of the deterministic simulation computed by a deterministic simulation of the model that we used~~. A similar approach is ~~used~~ ~~adopted~~ in Byrne et al. (2021).

2.2.2 Altimeter data

235 Altimeter data are difficult to use ~~to study the surge in storm surge studies~~, even if some attempts were made ~~in the past~~ (Bajo et al., 2017). Since high-frequency signals are badly sampled ~~by the satellite tracks~~, usually this part is removed ~~using with the help of~~ a barotropic two-dimensional model (Carrère and Lyard, 2003). Normally, in the altimeter products, also the tidal part is removed with a similar ~~barotropic tidal~~ model (Lyard et al., 2021). However, since the altimeters measure the sea level ~~in the same locations at~~ every cycle (about 10 days) ~~in the same locations~~, it is possible to extract the tidal part from the signal ~~by means of harmonic analysis~~.

240 Recently, the amplitudes and phases of the main harmonic components along the altimeter tracks ~~are~~ ~~have become~~ available on the AVISO website (https://doi.org/10.6096/CTOH_X-TRACK_Tidal_2018_01). The X-TRACK along-track tidal constants were computed via harmonic analysis of the sea level anomalies for long time series missions (Birol et al., 2017). We used the X-TRACK (based on Topex/Poseidon + Jason-1 + Jason-2) eight most energetic tidal constituents over the Mediter-
245 ranean Sea (see the list in the previous section) to compute the astronomical tide for the period of our simulations. ~~These tide time series were used for~~ ~~This data was used in~~ the validation of the tidal reanalysis simulation, as described in Section ~~??3.2~~.

2.3 The data assimilation system

In this section and the following ones, we will use some terminologies and concepts typical of the DA, for an introduction to these concepts and ~~the various to the different~~ techniques we recommend reading Carrassi et al. (2018).

250 The code used for the DA ~~in this paper~~ is based on ~~the~~ routines developed and described in Evensen (2003, 2004) and available at https://github.com/geirev/EnKF_analysis. These routines have been adapted and extended to be used in the SHYFEM model, allowing different ~~DA~~ techniques, such as the Ensemble Kalman Filter (EnKF) and the Ensemble Square Root Filter (EnSRF), and the ~~chance of using~~ ~~use of~~ different numerical schemes (<https://github.com/marcobj/shyfer>). Furthermore, various routines have been created to perturb the forcings and boundary conditions ~~obtaining in order to obtain~~ ensembles of
255 arbitrary size. In the present work, we used the EnKF with the correction described in Evensen (2004) to avoid the loss of rank in the observation covariance matrix (Kepert, 2004). The system uses ~~the~~ adaptive inflation (Evensen, 2009a) ~~,~~ to avoid narrowing of the ensemble spread, ~~and;~~ ~~while~~ the observations are considered independent (~~in fact~~ they come from different stations). Therefore, the observation covariances are set to zero, while the variances are positive and equal ~~in each station to~~

each other. In order to discard ~~innovations that are too high~~ the too high innovations, a simple technique ~~, which~~ checks the values of the variances of the background matrices and the observations, ~~is used~~ (Järvinen and Undén, 1997; Storto, 2016).

Finally, to ~~dampen~~ avoid shocks in the ~~analysis solution model state~~ near the lateral open boundary ~~in the Atlantic ocean~~, ~~the analysis solution is~~ due to the imposition of the sea level, in the final ensemble states the analysis states are relaxed to the background ~~oneones~~, gradually approaching the boundary. The background and analysis states are weighted through a Gaspari-Cohn (GC) function (Gaspari and Cohn, 1999), prescribing a radius from the nodes of the lateral open boundary. In each node ~~of the whole computational grid the values of the model~~ the model ensemble states after an analysis step ~~are~~ is:

$$A_a^*(x, y) = A_b(x, y)f(x, y) + (1 - f(x, y))A_a(x, y), \quad (5)$$

where x and y define the position of the node in the grid, A_b ~~is the matrix of~~ are the background states, A_a ~~is that of~~ are the analysis states, f is the GC function, equal to 1 in the open boundary nodes. Since the GC function goes to zero at a distance greater than twice the radius, ~~the solution at greater distances after this distance the solution~~ is identical to that of the analysis, while near the boundary is ~~mainly forced~~ similar to the background solution, strongly driven by the boundary condition and ~~it~~ is not affected by the analysis increments. ~~The values the EnKF parameters here described~~

This set of the DA parameters were decided after running several calibration tests, ~~which will be~~ some of which are exposed in Section 2.4.

2.3.1 ~~The perturbation methods~~

~~The ensemble in all the DA simulations was created by perturbing the initial state, the forcing and boundary conditions and some model parameters. The perturbation of the initial state is performed only for the sea level (variable ζ in the eqs. 1), with a technique similar to that used for the atmospheric pressure (described later), while the water transports are not perturbed (barotropic transports reach a dynamic equilibrium quickly depending on the sea level). In the forecast simulations, the initial state is perturbed only in the first daily simulation. In contrast, the following daily simulations start all from the states saved the previous day of each forecast. For the reanalysis simulations, the perturbation of the initial state is not very important, as the simulations last two months and the influence of the forcing and boundary conditions, as well as the assimilated observations, are far more important after some days. The forcing and boundary conditions are perturbed for the entire duration of the DA simulations, both in the reanalysis simulations and in the forecast simulations. However, the first ones last two months, while the DA in the daily forecast simulations last only one day and then five days of forecast follow, starting from the analysis ensemble mean and using unperturbed forcings and boundary conditions.~~

~~The perturbations are calculated so that, for a scalar physical variable, the mean of the perturbed values should be approximately equal to the non-perturbed value and the standard deviation should resemble the estimated error; furthermore, the perturbations must belong to a Gaussian distribution. We used this method for the conditions at the lateral open boundary, with the same perturbations in each node.~~

~~We used this kind of perturbation also for the value of the drag coefficient in the bottom stress, with a distribution centre in the unperturbed value (0.0025) and a standard deviation of 0.0005. In the DA simulations with the tidal forcing, a calibration~~

factor for the loading tide is perturbed as well, with a mean value of $6.e-05$ and a standard deviation of $1.e-05$ (parameter *ltidec* in SHYFEM).

295 Perturbing the two-dimensional atmospheric fields is more complex. We still impose the same condition for the mean and the standard deviation at each point, but the perturbations must have a spatial correlation and the atmospheric pressure perturbations should be linked to the wind perturbations. We therefore first perturbed the atmospheric pressure field, through a technique to generate two-dimensional pseudo-random fields (Evensen, 1994, 2003), imposing a decorrelation length of about 400 km and a standard deviation of 3.5 hPa. These values, slightly different from those used in Sakov et al. (2012), were found empirically and they produce perturbations at a sub-synoptic scale, with a similar size to the typical Mediterranean cyclones (Ferrarin et al., 2021). From these fields of pressure perturbations, we calculated the corresponding perturbations for the velocity components. If the pressure perturbation in one point is δP , the perturbations for the wind components, in geostrophic equilibrium, are:-

$$\delta u = -\frac{\delta P}{\delta y} \frac{1}{\rho_a f}$$

$$\delta v = \frac{\delta P}{\delta x} \frac{1}{\rho_a f}.$$

305 Using these perturbation fields to be applied to the unperturbed fields of wind and pressure at an instant t , we obtain perturbed fields with physical coherence. Again for the atmospheric fields, in addition to this kind of perturbation, a temporal perturbation has also been introduced in which, from a field at time t , an ensemble of equal fields is generated but with reference time $t + dt_n$, where dt_n are time perturbations belonging to a Gaussian distribution as well.

Finally, as regards the perturbations of the forcing and the boundary conditions that vary over time, the error at a given instant t_1 must be correlated to the error at the next instant, t_2 . This is defined as "red noise" and is implemented by calculating a weight dependent on the time interval between the two fields and by defining a decay time:-

$$\alpha = 1 - \frac{t_2 - t_1}{\tau},$$

where τ is the decay time. The perturbation ξ_2 , at time t_2 , becomes a linear combination of the perturbation ξ_1 , at time t_1 , and the newly calculated perturbation ξ_2^* :-

$$\xi_2 = \alpha \xi_1 + \sqrt{1 - \alpha^2} \xi_2^*.$$

315 2.4 Results' production and post-processing

Using the tools described above, we ran numerous tide, surge and total sea level simulations. In [All the simulations were run in the period from the beginning of November to the end of December 2019](#) we run [hindcastsimulations, 2019. The hindcast/reanalysis simulations are two-month long](#) with continuous forcing and boundary conditions, as described in Section 2.1.1, without DA, and the same type of simulations, but using DA (reanalysis simulations). Then, we run daily forecast simulations, starting from initial states made without DA (background states), and initial states made using DA (analysis ensemble means):-

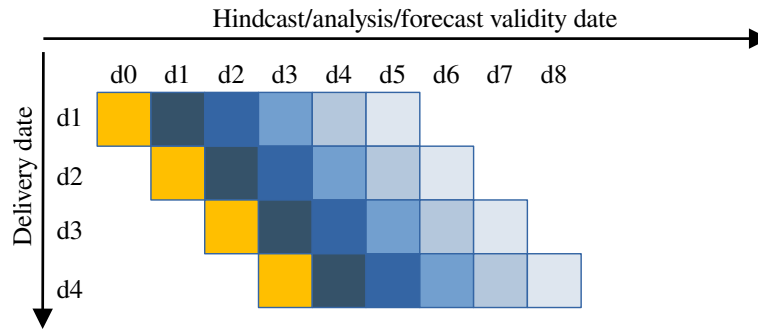


Figure 2. Timeline of the forecast simulations. The squares represent the days, which are expressed as d0, d1, etc. The delivery date is the day when the forecast is supposed to be executed, while the validity date is the length of the forecast. The orange squares are the days of hindcast (without DA) or of analysis (DA). The blue squares are the forecast days, from the first (darkest) to the fifth (lightest).

The reanalysis simulations assimilate the data from the 50 stations every hour, throughout the two months. From the ensemble states, the analysis ensemble mean is calculated, as the best estimate of the real state of the physical system, and is used in the examination of the results.

325 In running the forecast simulations we used the same settings as those that would be used in an operational context. The period is the same as considered in the hindcast and reanalysis simulations. However, the simulations are performed daily and each ~~one simulation~~ is composed of a hindcast (no DA) or analysis (DA) simulation of one day and a five-day forecast simulation. For the sake of brevity, we will show only the results of the first three days. The forecast simulations with DA assimilate the data from the 50 stations, every hour, in the 24 hours preceding the forecast. From the final ~~states, the analysis~~ states, analysis states we computed the analysis ensemble mean, each day at 00 UTC. ~~From this state the, and we used it as~~ initial state to run five-day forecast ~~starts and. Then,~~ the analysis states are saved to be used as initial states in the next day's simulation. In this way, the DA always starts from analysis states and is similar to the cycle performed in reanalysis, except for the perturbation of the forcing and boundary conditions, which is ~~redone made again~~ every day.

To evaluate the results, each daily forecast simulation was divided into five parts and each part was chained with the corre-
 335 sponding one of the previous and following days. Continuous results are obtained for 1-day, 2-day and 3-day lead times and can be directly compared with the observations. The forecast timeline is shown in Fig. 2 and is the same for the simulations without and with DA.

We calculated the standard deviations of the model and observed data, the correlation between them and the Centered Root Mean Squared Error (CRMSE). The standard deviations and CRMSEs were normalised to the standard deviation of
 340 the observations at each station and represented by Taylor diagrams (Taylor, 2001). Bias error plots were also calculated, ~~in~~ which and the bias is calculated as the mean of the differences between the modelled and observed values; while the CRMSE represented in the same plots is not normalised. For the sake of clarity, we reported the various simulations in Tab. 1 with identification labels, which we will use in the following sections.

Table 1. Clusters of simulations executed in this work. The IDentification label is composed by the physical variable (T - tide, S - surge, Z - total sea level), by the type of simulation (hindcast/reanalysis/forecast) and by the use of DA.

ID	Variable	Type	DA
<i>TH</i>	tide	hindcast	no
<i>TR_A</i>	tide	reanalysis	yes
<i>SH</i>	surge	hindcast	no
<i>SR_A</i>	surge	reanalysis	yes
<i>ZH</i>	total sea level	hindcast	no
<i>ZR_A</i>	total sea level	reanalysis	yes
<i>SF</i>	surge	forecast	no
<i>SF_A</i>	surge	forecast	yes
<i>ZF</i>	total sea level	forecast	no
<i>ZF_A</i>	total sea level	forecast	yes

Regarding the spectral analysis, we used the NTR and the model surge signal in December ~~2019, since there is a strong~~
345 ~~presence of seiches, 2019~~. The power spectral density was estimated with the Welch method (Welch, 1967), dividing the period into 8-day windows with 50% overlap. The fast Fourier transform length is rounded up to the nearest integer power of 2 by zero padding.

3 Results

3.1 Calibration of the data assimilation

Before running the final simulations used to produce the results, we carried out numerous experiments to determine the best
350 values of some DA parameters. The parameters that have been varied are the assimilation scheme (EnKF, EnSRF), the error of the observations (we tested from 1 cm to 3 cm), the radius in eq. 5, the radius in the domain localisation and the number of the ensemble members. Although in fact, the localisation brings advantages in many applications, in our case the available
355 observations are mainly located in the northern side of the computational domain. This implies that to obtain a spatially uniform analysis correction, a large localisation radius should be used to reach the other border of the basin. Furthermore, the correlation radius of a variable (barotropic sea level perturbations in our case) between a point and its neighbours increases with
its propagation speed. In the present case, the propagation speed is that of shallow water waves (in the western Mediterranean basin, considering an average depth of about 2000 m, the speed is 140 m/s). For these considerations and after having carried
out various tests varying the radius of the local analysis, we have decided not to use it and to increase the number of ensemble
360 members. A high number of ensemble members avoids problems of spurious correlations and cross-correlations. Moreover, since the simulations are extremely fast and having a workstation with a high number of cores, the execution time has not been much affected. To determine the minimum number of ensemble members to obtain good results without increasing too

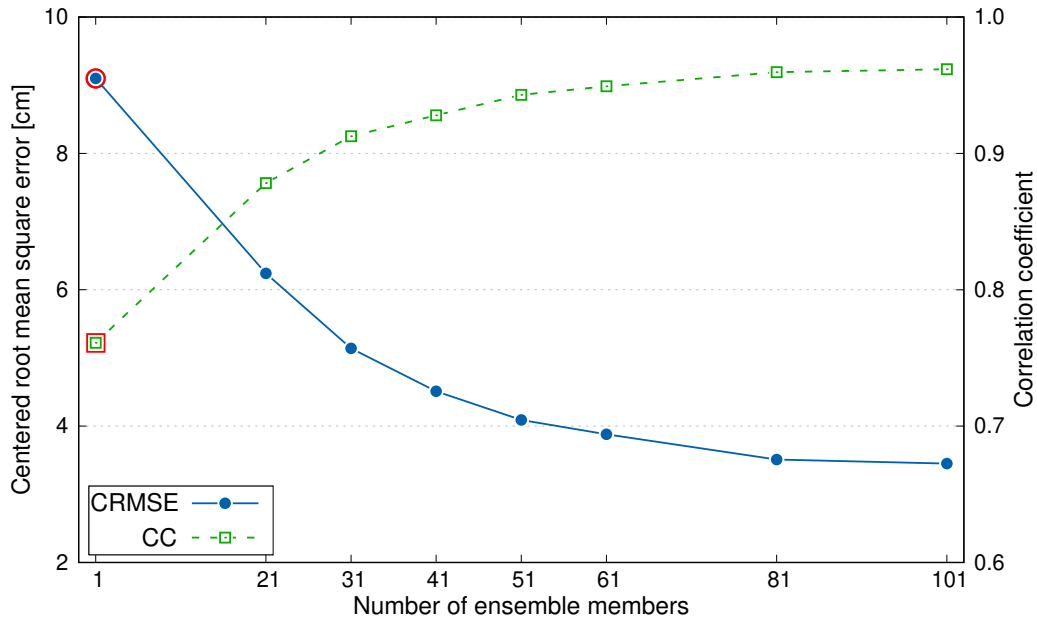


Figure 3. Performance of the data assimilation, in terms of CRMSE and correlation coefficient, as a function of the number of ensemble members. The red contour highlights the results of the simulation without data assimilation.

much the computational load, we performed various total sea level reanalysis simulations. In Fig. 3 we report the Centred Root Mean Squared Error (CRMSE) of the analysis ensemble mean, averaged in the validation stations, using a different number of ensemble members. The error is reduced from 9.3 cm, in the case without DA, to 3.6 cm using 101 members, and the correlation increases from 0.75 to 0.95. Since the error pattern is regular and asymptotic, we decided to use 81 members.

Therefore to conclude, the final configuration uses the EnKF with an observation error of 2 cm, a radius in eq. 5 of 250 km, no localisation techniques and 81 ~~members in the ensemble~~ ensemble members.

3.2 Hindcast/reanalysis simulations

~~We will analyse first~~ In this section we analyse the results of the hindcast and reanalysis simulations, for the astronomical tide, the surge and the total sea level. In Fig. 4, the first diagram on the left shows the astronomical tide comparison, in which the model results, without (hindcast) and with (reanalysis) DA, are compared with the tide calculated by the harmonic constants (TH , TR_A). The results are good even without DA in almost all stations, with a certain tendency to overestimate the signal amplitude (higher standard deviation). Station 60 is an exception, where the results in hindcast are poor, probably due to its position in the Aegean Sea, a morphologically complex area. The results with DA are very good for all the validation stations, reaching almost perfect agreement (correlation about 0.99), with a small deterioration in station 60, which however improves and still achieves a more than good accuracy (CRMSE from 4 cm to 1 cm).

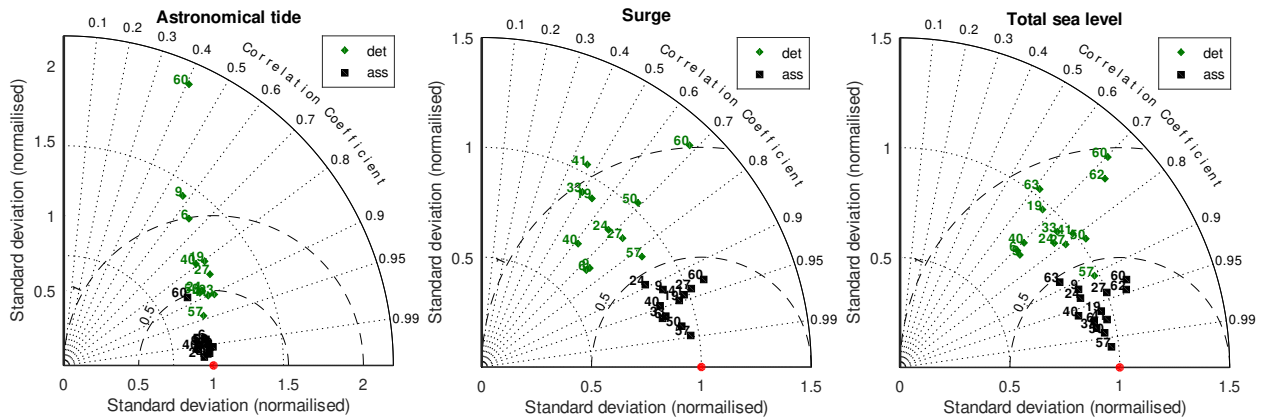


Figure 4. Normalised Taylor diagrams of the hindcast and reanalysis simulations. The deterministic simulations (green diamonds) compared to DA simulations (black squares), for the astronomical tide (left), the surge (centre) and the total sea level (right). The red dot indicates the perfect agreement.

The central diagram shows the reproduction of the surge signal, compared with the NTR extracted from the observations (SH , SR_A). In this case, the distribution of the stations in the Taylor diagram is sparse for the deterministic simulation and the station 60 is still the worst. The reanalysis simulation improves considerably the surge reproduction in all the stations, with a very focused distribution even if not like that of the astronomical tide. For example, in station 60, the CRMSE reduced from 8 cm to 3 cm.

Finally, the simulations with the total sea level (ZH , ZR_A) have a quality similar to that of the surge simulations. Some stations are even better, perhaps thanks to the good accuracy in the reproduction of the tidal signal. As for the surge simulations, the CRMSE goes from 8 cm in the hindcast simulation to 3 cm in the reanalysis.

For the total sea level, we made a comparison also for the stations 62 and 63 which, as previously mentioned, are the only ones in the eastern basin and are at least a thousand kilometres away from the nearest assimilated station. It is interesting to note that these stations have a consistent improvement; the CRMSE goes from 9.6 cm to 4 cm for station 62 and from 10.9 cm to 5.7 cm for station 63. ~~This improvement is probably due to~~ Probably, this improvement is due to the high number of ensemble members, which allows correct correlations in the background covariance matrix, even for ~~model variables that are variables~~ very distant from each other, ~~obtained thanks to the high number of the ensemble members in the EnKF.~~

3.2.1 Validation of tide with altimeter data

~~Unlike coastal stations, altimeter data allows the investigation of the astronomical tide~~ In order to validate the DA even in the open sea, far from the ~~east~~ coasts, it is possible to use altimeter data for the computation of the harmonic constants and the tide. The amplitudes and phases of the eight most energetic tidal constants retrieved from the altimetric data were used to calculate the tide oscillations at each point of the satellite tracks in the Mediterranean Sea. To compare this data with the model data, the sea levels from the TH and TR_A simulations were extracted at the same coordinates and the CRMSE were calculated. Fig. 5

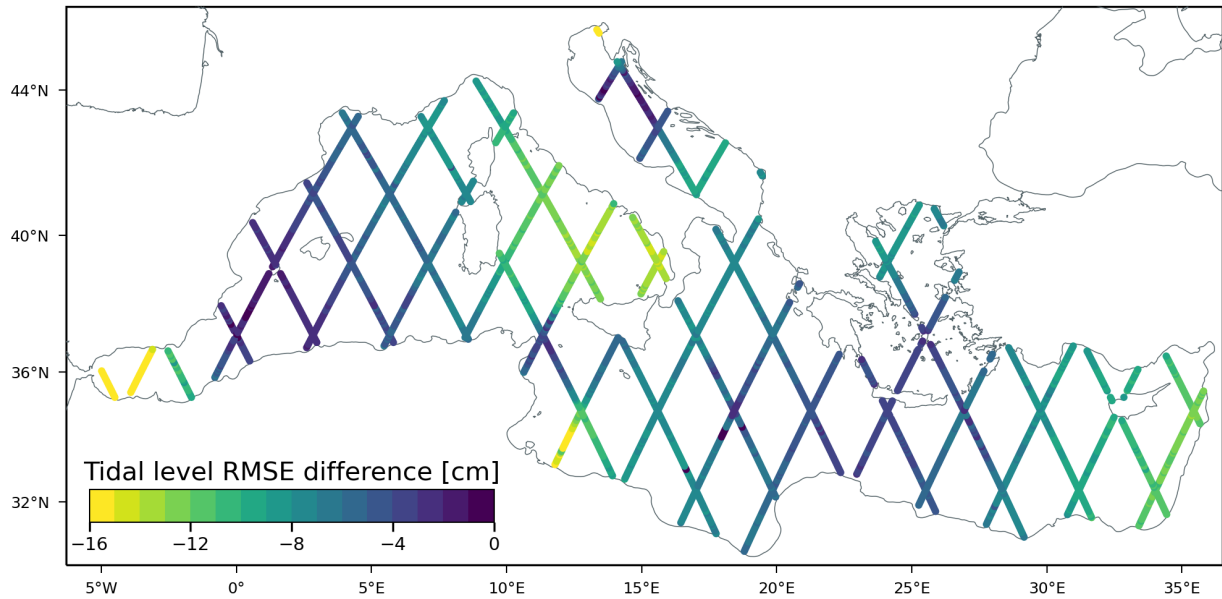


Figure 5. CRMSE differences (ass - det) for the tidal level computed using the altimeter X-TRACK along-track tidal constants retrieved from AVISO.

shows the along-track differences in the CRMSE (i.e., $CRMSE_{TRA} - CRMSE_{TH}$). The values are negative almost everywhere, clearly showing a marked improvement of the DA in reproducing the tidal levels over the whole basin with a reduction of the CRMSE up to 20 cm near the Gibraltar Strait, in the Gulf of Gabes and in the northern Adriatic Sea. It is worth noting that, the DA effect is not local, as the areas in which there is a greater improvement do not correspond totally to those with more assimilated stations (e.g., the eastern Mediterranean Sea). Averaging the CRMSE over the whole basin, we obtain a mean value of 11.6 cm for the simulation without DA (TH) and a value of 4.3 cm for the simulation with DA (TRA).

3.3 Forecast simulations

In this section we analyse the results of the forecast simulations for the surge component and for the total sea level. In Fig. 6 the Taylor diagrams show the comparison with the observations for the first, second and third forecast days, both for the model data without DA, starting from a background state and for those with DA, starting from the analysis ensemble mean. In the results relative to the surge simulations (SF , SFA), the effect of the DA on the first forecast day is evident and the distribution is similar, slightly worse, to that obtained in the hindcast and reanalysis simulations in Fig. 4, central panel. The data improves in each validation station, including station 60, which is far from the nearest assimilated station. Unfortunately, the data in stations 61 and 62 cannot be used in the validation of the surge simulations, as it was not possible to perform the harmonic analysis necessary to subtract the tide, due to the few-scarcity of available data.

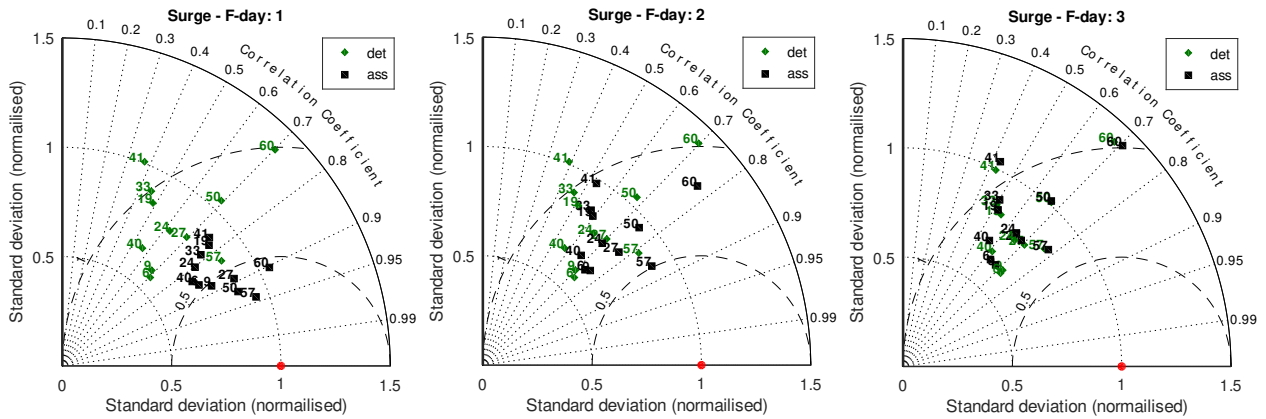


Figure 6. Normalised Taylor diagrams of the forecast simulations with the surge. The deterministic simulations (green diamonds) compared to DA simulations (black squares), for the first (left), second (centre) and third (right) -day forecast. The red dot indicates the perfect agreement.

The improvement is smaller on the second day forecast, while on the third day is almost nil, worsening slightly in some stations. This behaviour is due to the fact that the initial state of the system gradually loses its importance as the forecast moves away from it, as well as the error correction. The forecast without DA has a larger error in the initial state, which mostly counts on the first and second days of forecast.

In Fig. 7 we show the bias error for the surge simulations. This graph-plot was not made for the hindcast and reanalysis simulations as, in that case, for which the bias is almost null. The figure shows that the DA improves the results, especially on the first forecast day, then the correction is still positive but weaker on the second day, while on the third day the DA slightly worsens the original forecast, in agreement with what has been seen in the Taylor diagrams. The worsening is contained and relates to the third forecast day which, in an operational context, is of secondary importance compared to the first and second days. Still, observing Fig. 7, it can be seen how station 57 deviates from the others, with a much greater bias and CRMSE. This is due to the position of this station, in the northern Adriatic, where the surge signals and the associated seiche oscillations are larger than in the rest of the Mediterranean Sea. However, precisely for this reason and since there are numerous good-quality stations in the Adriatic Sea, the effect of DA is strong, both in the correction of random and systematic errors. The systematic errors, represented by the biases in Fig. 7, are almost all positive, denoting a systematic an overestimation of the model. This behaviour is true statistically for the two-month period considered, while for extreme events the trend is normally the opposite.

In Fig. 8 we report the Taylor diagrams for the total sea level (ZF , ZF_A). In this case, the diagrams results are slightly better than for the surge. The simulations, both without and with DA, maintain evident improvements even on the third forecast day. For the total sea level, we can evaluate the improvement also in the stations 61 and 62, even if they have a smaller number of records. As seen for the hindcast and/reanalysis simulations, these stations are important because of their distance from other assimilated stations and because they are the only stations in the eastern Mediterranean basin. The DA improvement is large also for the forecast as it was In these two stations, the DA improves strongly the results as well as in the reanalysis simulation.

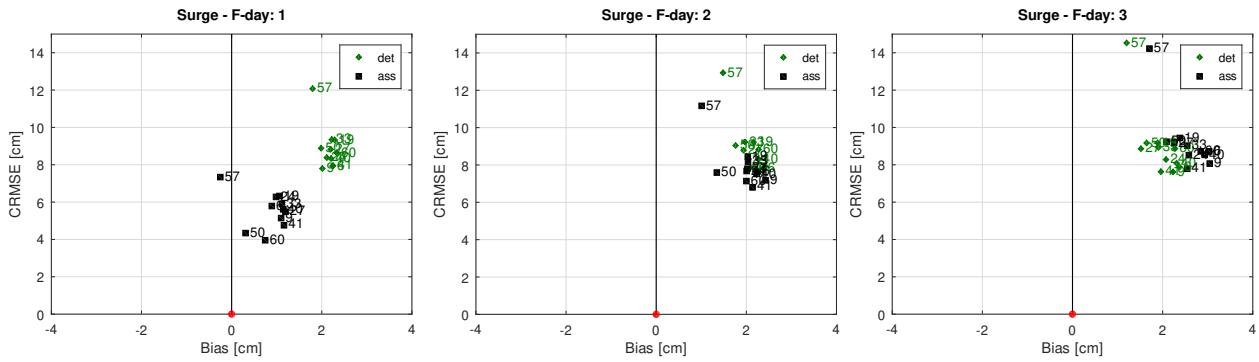


Figure 7. Bias diagrams for the first (left), the second (centre) and the third (right) -day forecast of the surge simulations. The deterministic results (green diamonds) are plotted with the DA ones (black squares). The red dot is the perfect agreement, while positive bias means an overestimation of the model.

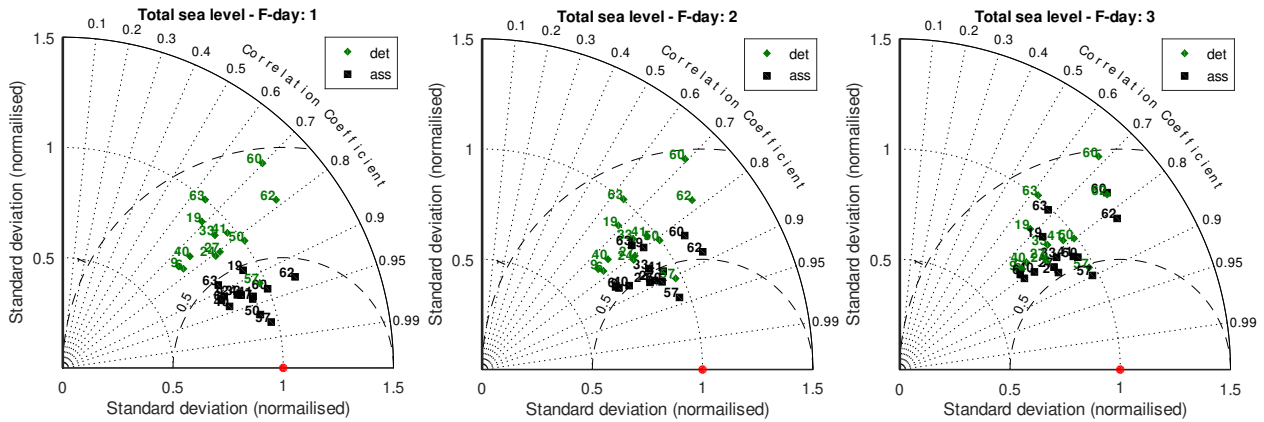


Figure 8. Normalised Taylor diagrams of the forecast simulations with the total sea level. The deterministic simulations (green diamonds) compared to the DA simulations (black squares), for the first (left), second (centre) and third (right) -day forecast. The red dot is the perfect agreement.

Fig. 9 shows the bias diagram for the total sea level. ~~In this case, the biases are generally lower than those of the surge, even for the model without DA.~~ As for the surge, the biases are positive in most of the stations, denoting a model overestimation. ~~Bias diagrams for the first (left), second (centre) and third (right) -day forecast of the total sea level simulations. The deterministic results (green diamonds) are plotted with the DA ones (black squares). The red dot is the perfect agreement, while positive bias means an overestimation of the model.~~

440 ~~Considering that the oscillations of the total sea level are larger than the surge ones, as they contain the tidal part, the DA improvement is smaller in proportion, but they are generally lower than those of the surge, even for the model without DA.~~ As shown in the Taylor diagrams, also the CRMSEs in Fig. 9 improve with the DA in all the three days of forecast, even if ~~this is more evident more~~ in the first day.

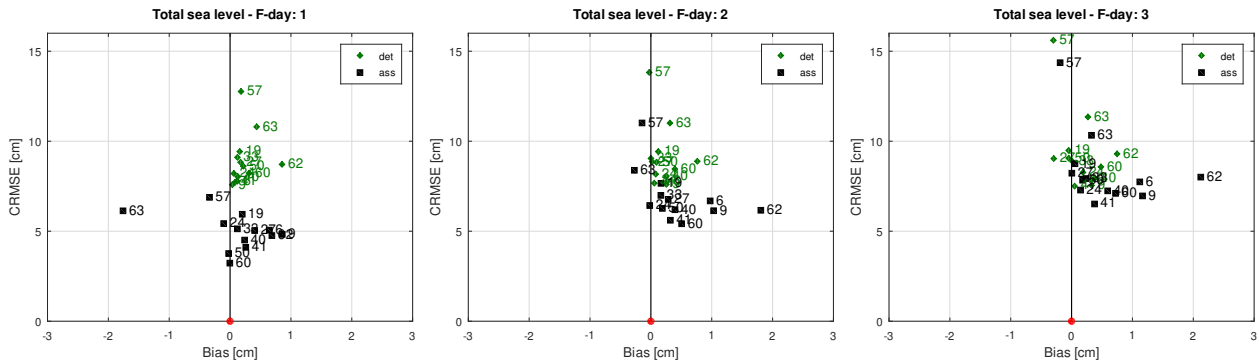


Figure 9. Bias diagrams for the first (left), second (centre) and third (right) -day forecast of the total sea level simulations. The deterministic results (green diamonds) are plotted with the DA ones (black squares). The red dot is the perfect agreement, while positive bias means an overestimation of the model.

3.3.1 12 November 2019's storm surge event

On 12 November 2019, a particularly intense meteorological perturbation hit the central part of the Mediterranean basin. A sub-synoptic cyclone, centred in the Tyrrhenian Sea, caused a strong ~~Sirocco~~-south-easterly (Sirocco) wind along the entire Adriatic basin, with a fairly typical configuration. However, embedded in the first cyclone, a second meso-beta scale cyclone developed near the south-eastern coasts of Italy and moved in the north-westward direction over the Adriatic Sea along the Italian coast. This second cyclone moved at a speed close to that of shallow water waves in the northern Adriatic basin and caused a, causing Proudman resonance (Proudman, 1929; Ferrarin et al., 2021). In Venice, the sum of the various sea level contributions produced a maximum which was the second highest ever recorded (Ferrarin et al., 2021).

In Fig. 10, we report the sea level forecast, without and with DA, the day before the main peak, the same day and the day after. The sea level is related to the Venice station and the forecasts are retrieved from the simulations SF and SF_A with the addition of the tide computed by the harmonic constants. The previous day's atmospheric forecast underestimated the wind and had strong errors in positioning the cyclones. Consequently, also the sea level forecast had large errors (left panel) and the use of the DA ~~had~~has no effect since the initial state was relative to an instant of calm conditions and did not contain any large errors. The second forecast, shown in Fig. 10 central panel, is relative to the day of the event. The meteorological forecast was accurate, with a good reproduction of the track followed by the smaller cyclone. Consequently, the prediction of the sea level is good even without the use of the DA since, even in this case, the event started to evolve after the time of the initial state. The DA does not improve the main peak but it gives a small correction to corrects slightly the previous peak.

Finally, we ~~also show the day after's forecast because a high peak was registered in Venice~~ show the forecast of the day after because a large peak, even if less extreme than the previous one, was registered in Venice. This event happened with calm weather conditions and was due to an overlap of the tidal peak to a small seiche peak, probably ~~related~~linked to the second mode of the Adriatic basin (A2 in Tab. 2). The forecast without DA missed the reproduction of this peak ~~;~~probably because

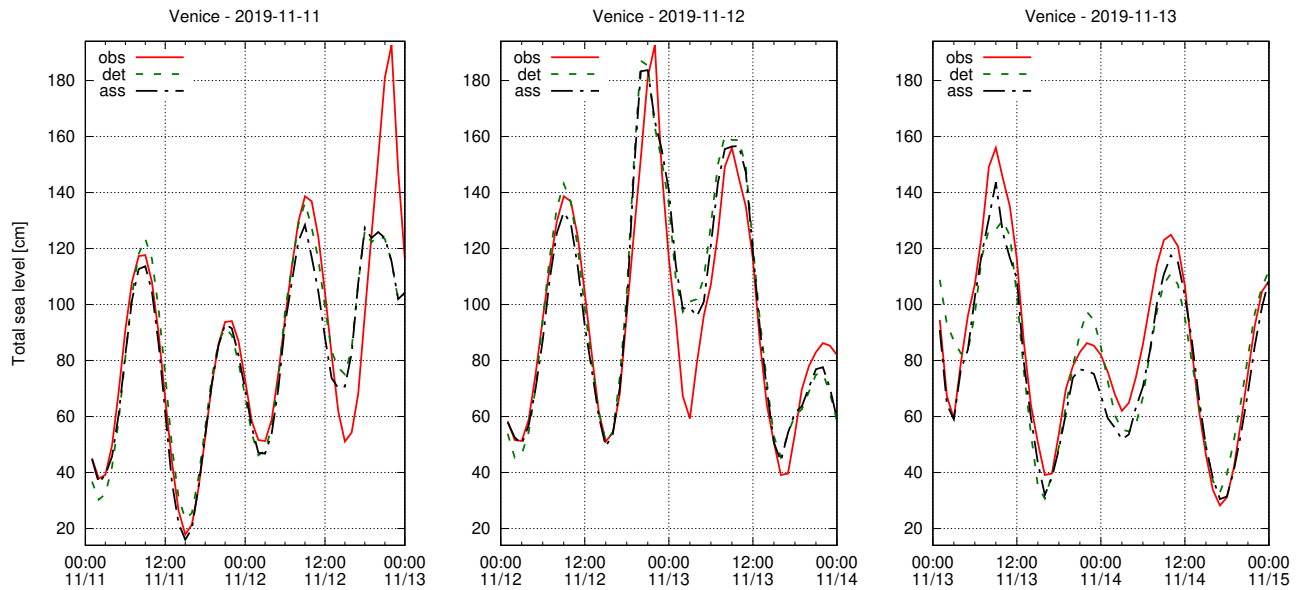


Figure 10. Forecasts issued on 11, 12 and 13 November 2019 at the Venice station, from the surge simulations (adding the tide). The observed total sea level (obs) is compared to the forecast without (det) and with (ass) the use of the DA. The sea levels are in CET time and are referred to the local datum (ZMPS).

of errors in the ~~surge field of the initial state~~ initial state of the surge field in the Adriatic Sea. In this case, the DA can give a
 465 valuable contribution, with a correction of about 15 cm, which is considerable ~~for the particularity of that area~~ (Fig. 10, third panel).

3.3.2 December 2019's seiche events

As explained in the introduction, ~~the~~ seiches are free barotropic oscillations of the sea level in a basin, triggered by an initial
 470 perturbation. Therefore, since they are not forced, the reproduction of their propagation depends solely on a correct initial state
 and a correct modelling setup. Given that DA has the purpose of reducing the error of the initial state, we expect, as shown
 in the previous section, a remarkable impact on the reproduction of the seiches. ~~These oscillations are not studied much in
 the Mediterranean Sea, since they are not very energetic. On the contrary, in the Adriatic Sea, they were deeply studied and a
 correct reproduction is essential for the sea level forecast.~~

In December 2019 (period included in our simulations), significant seiche events, among the most energetic ever recorded in
 475 this area, took place (Fig. 11). Despite their intensity, they were not preceded by any strong storm surge. A possible explanation
 could be that these oscillations were triggered by a slightly-periodic atmospheric oscillation at a frequency similar to that of
 the normal modes of the basin (which ~~are the~~ have the basin's resonant frequencies).

These events were poorly predicted by storm surge models operating at that time in Venice (none with DA), the city most
 affected by flooding in the northern Adriatic. Fig. 12 shows the total sea level recorded in station 56 (Venice) and the first three

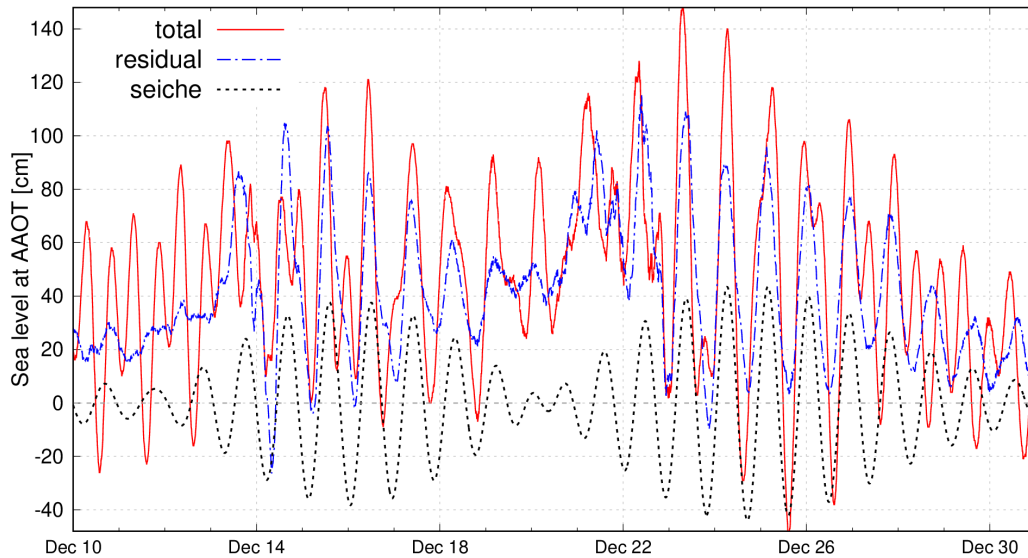


Figure 11. Seiche event happened on December 2019, recorded at the AAOT station (n. 57). From the observed total sea level (total) we extracted the NTR (residual) and the seiche contribution (seiche), with a bandpass filter. The sea levels are in CET time and are referred to the local datum (ZMPS).

480 days of forecast from the surge simulations (SF , SF_A with the addition of the astronomical tide). The oscillations observed in the figure are therefore a superposition of the astronomical tide on the surge signal, which is dominated by the seiche oscillation. At the beginning of the forecast, the DA corrects an error of about 30 cm and maintains a continuous improvement over time, which can also be appreciated after three days of forecast. Although in the section 3.3 we have seen ~~how that~~ the statistical improvement at three days is not very appreciable, when these oscillations are considerable the error of the initial state tends to be larger and the DA provides a greater correction.

485 ~~This event demonstrates~~ To check the spatial patterns of the DA correction in this event, we plotted in Fig. 13 the surge increments of the analysis ensemble mean with respect to the background ensemble mean, averaged over one daily DA cycle, on 14 December 2019. The increments are distributed equally throughout the domain and do not appear to be concentrated in the areas with more stations. This is correct as variations of barotropic phenomena, which have a very large spatial scale, must be extensive. There could be some wrong increments in the southern and eastern areas, where no stations are assimilated, however, this does not seem to emerge from the statistic of the results, which is good also in this part (e.g., station 60 in Fig. 6 and stations 60, 62, 63 in Fig. 8). Finally, note how the increments tend to zero near the open boundary in the Atlantic, as a consequence of the eq. 5, to avoid shocks given by the prescribed sea level.

490 ~~These events demonstrate~~ the particular effectiveness of the DA in ~~correcting the dynamical state in~~ presence of seiches ~~in the~~ Adriatic Sea. To better highlight this feature ~~and see if also in the rest of the Mediterranean Sea the effect is positive,~~ we carried out ~~the~~ spectral analyses of the NTR ~~extracted~~ from the observations and ~~from the model~~ ~~the model~~ surge, in all the stations

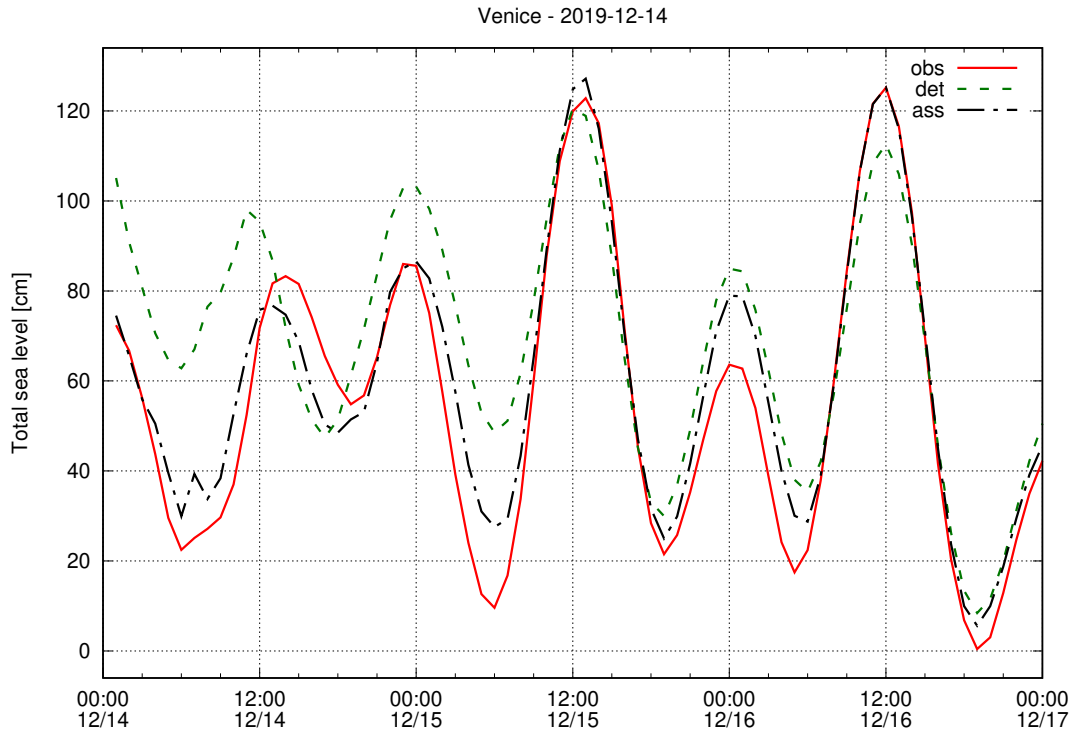


Figure 12. Forecast issued on 14 December 2019 at the Venice station, from the surge simulations (adding the tide), referred to the local datum (ZMPS) and in CET time. The observed total sea level (obs) compared to the forecast without (det) and with (ass) DA.

for December 2019. ~~Before examining the performances of the model with and without DA~~ From the peaks in the power spectra, the periods and energy of the excited barotropic modes can be deduced. ~~Before examining the model performances in the reproduction of the power spectra, we report below~~ give below a summary of the periods of the observation power spectra in barotropic modes of the Adriatic and Mediterranean basins seas. We report the values currently known from works based on observations or models and the periods extracted from our observations (see Tab. 2). Although the periods of the main modes are well known in of the Adriatic Sea are known (Cerovecki et al., 1997; Vilibić et al., 2005; Vilibić, 2006; Bajo et al., 2019), no works (to our knowledge), based on the analysis of observations, (as far as we know) report the periods of the barotropic modes in Mediterranean basin. For the Mediterranean Sea. However, Schwab and Rao (1983), using a simple barotropic model, foresees some of them and describes their shapes. Below we give a brief description of their shapes and their periods, as reported in Schwab and Rao (1983) and as we found from the observations (see Tab. 2).

~~Schwab and Rao (1983), by calculating we found only a work that reports the shapes and the periods of the main modes, deduced with a simple model, with remarkable accuracy (Schwab and Rao, 1983).~~ In this work, the authors calculated the eigenvalues of a simplified barotropic model of the Mediterranean Sea, found four Mediterranean and found four modes of oscillation. The first mode (M1) relates to an oscillation with a single positive amphidromic node in the Gulf of Sicily and an expected period of 38.5 hours. This mode, which should have maximum amplitude both at the western and eastern borders of

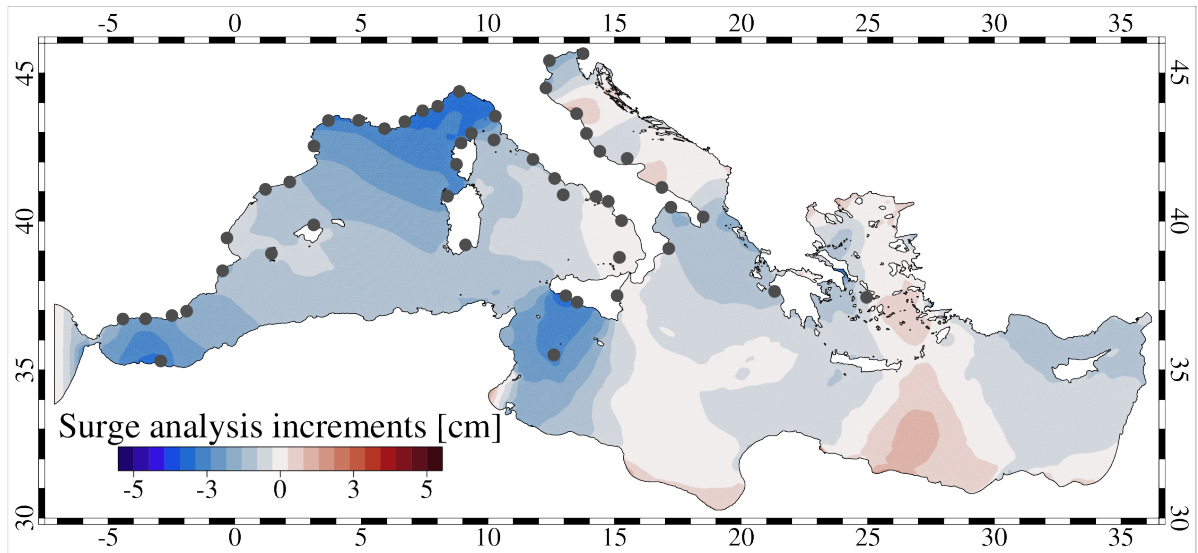


Figure 13. [Surge increments of the analysis ensemble mean with respect to the background ensemble mean. The increments are the mean of 24 hourly steps \(one daily DA cycle\) on 14 December 2019. The assimilated stations are marked as dark-grey dots.](#)

the Mediterranean basin, has not been identified by our observations, probably because it has not been solicited by any forcing in the period that we considered.

The second mode (M2) has a more complex shape with a negative amphidromic node in the western basin, a positive one in the eastern basin and a third one in the Adriatic. This oscillation has an expected period of 11.4 hours. A similar peak, with a period of 12.8 hours, is present in the power spectra of several stations of the western basin (Fig. 15). The difference from the expected peak can be explained by considering the various simplifications and the low resolution of the model used in Schwab and Rao (1983), which dates back many years ago.

The third mode (M3) has three positive amphidromic nodes in the Mediterranean basin and one positive and one negative node in the Adriatic basin. This mode has a period of 8.4 hours and maximum amplitude near the Gibraltar strait and along the west coast of the Adriatic Sea. Indeed, from our measurements, a peak at 8-8.3 hours is quite evident in some stations in the western Mediterranean basin (Fig. 15) and a hinted peak is also present in Trieste (Fig. 14) and in other stations on the western coast of the Adriatic Sea.

Finally, the fourth Mediterranean mode (M4) of 7.4 hours should be related to the main oscillation of the Tunisian bight, where we have no observations and therefore we cannot check its presence. From the observation power spectra that we have analysed, there seems to exist a fifth mode, that we called M5, visible in the stations of the western Mediterranean basin and with a period of 6.2 hours (Fig. 15). However, we have no information of this oscillation from the scientific literature of our knowledge.

Table 2. Periods of the barotropic modes in the Adriatic and Mediterranean basins. A mode-identification label is written in the first column. The second column shows the average periods estimated by scientific works by observation spectral analysis, the third column shows the periods estimated by the model in Schwab and Rao (1983) and the last column shows our estimation of the periods by spectral analysis of the observations.

Mode ID	$T_{ol}[h]$	$T_s[h]$	$T_{op}[h]$
A1	21.2	20.1	21.3
A2	10.7	9.3	10.7
A3	6.7	6.8	-
A4	5.3	-	5.2
M1	-	38.5	-
M2	-	11.4	12.8
M3	-	8.4	8.3
M4	-	7.4	-
M5	-	-	6.2

Regarding the Adriatic Sea, the fundamental mode, here referred to as A1, is an oscillation that covers the entire basin, with a nodal line south of the Strait of Otranto, near the 1000 m bathymetric line, and has a period of about 21.2 hours. This oscillation is the most energetic among those analysed and is clearly visible in the observation power spectra, with a period of 21.3 hours (Fig. 14).

The second Adriatic mode (A2) has a nodal line that cuts the basin north of Ancona and a second line south of the nodal line of the fundamental mode, near the 2000 m bathymetric line. This oscillation is quite energetic, albeit less than the main one, and has a period of about 10.7 hours, which is perfectly confirmed by our observations (Fig. 14). Finally, the third Adriatic mode (A3) has a nodal line under the Po delta, one just above the Gargano peninsula and a third line coinciding with that of the fundamental mode. This oscillation has a period of about 6.7 hours, but we did not detect it in our power spectra. Probably, even this mode was not triggered during the two-month period that we analysed.

Finally, in Trieste and in other Adriatic stations, there is a peak at 5.2 hours, which we called A4. This peak cannot be the Trieste bay seiche, which has a period of 2.7-4.2 hours (Šepić et al., 2022), and was found also by Šepić et al. (2022), with a value of 5.3 hours. Its origin is still unclear.

After this description of the barotropic modes of the Mediterranean and the Adriatic basins, we show now how the model reproduces them in the first day of the forecast simulations (SF , SF_A). Fig. 14 shows the power spectra for two stations in the Adriatic Sea, Trieste, in the northern part, and Bari near the end of the basin in the southern part. Both the peaks of the fundamental mode, A1 and that of the second mode, A2, are clearly visible in these stations. Note that the peaks are much more energetic in Trieste than in Bari, which is located near the nodal lines of the two modes. The two peaks are both underestimated by the model without DA, while with the DA the peak of the first mode is reproduced very well, especially in the north. The A2 peak remains slightly underestimated at both stations but improves significantly with respect to the simulation without DA.

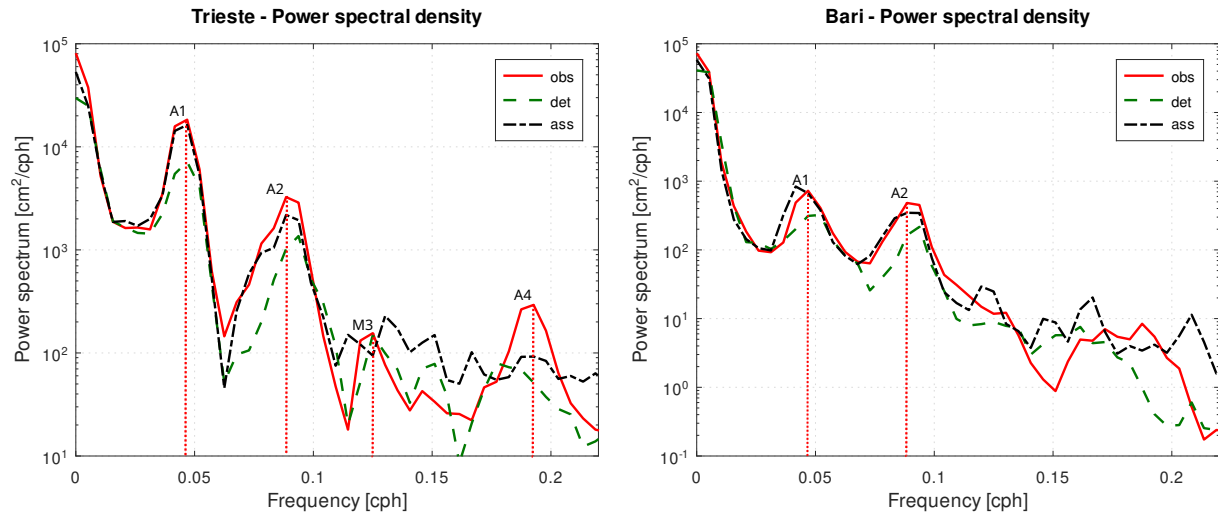


Figure 14. Power spectral density of the sea level in Trieste and Bari, in the Adriatic Sea.

Finally, in the Trieste station, a peak corresponding to the period of the third mode of the Mediterranean Sea (M3) is slightly
 550 visible in the observations. However, the model power spectra, both with and without DA, are noisy in this part of frequencies
 and do not reproduce it. Still in Fig. 14, but only in the Trieste station, the A4 peak is well visible in the observation power
 spectrum but it is not reproduced by the model. This peak could be related to some local atmospheric phenomenon not present
 in our forcing.

In Fig. 15 we show the power spectra of two stations near Gibraltar, one in the European coast and one in the African coast.
 555 In both stations the second and third barotropic modes of the Mediterranean basin are well visible (M2, M3). Their energy is
 much lower than that of the Adriatic modes (about 1,000 times) and, probably for this reason, they are corrected less by the
 DA. Both stations and many others in the western Mediterranean basin show a third, more energetic peak, which could be a
 fifth barotropic mode (M5). We can exclude that this peak is a spurious signal from a partial subtraction of the astronomical
 tide from the NTR, as it is also present in the surge signal of the model without DA (*SF*). This peak is corrected by the DA
 560 even though it is broadened in frequency.

4 Discussion

Looking at the results just presented, we can state that DA has an overall positive impact on the reproduction of barotropic sea
 level signals in the Mediterranean Sea. In the case of the astronomical tide, more than for the other components, the DA has
 shown that it can provide an excellent correction of the simulated [sea](#) level even in areas very far from the assimilated stations.
 565 This fact has been confirmed both in the [sub-basins-areas](#) with few stations, such as the eastern Mediterranean and in the open
 sea [areas](#). In fact, although the assimilated stations are all coastal, the altimetric data allowed validation of the [tidal](#) results in
 the open sea. The effectiveness of DA is due to the good number of ensemble members and the [fact-that-the-perturbations-were](#)

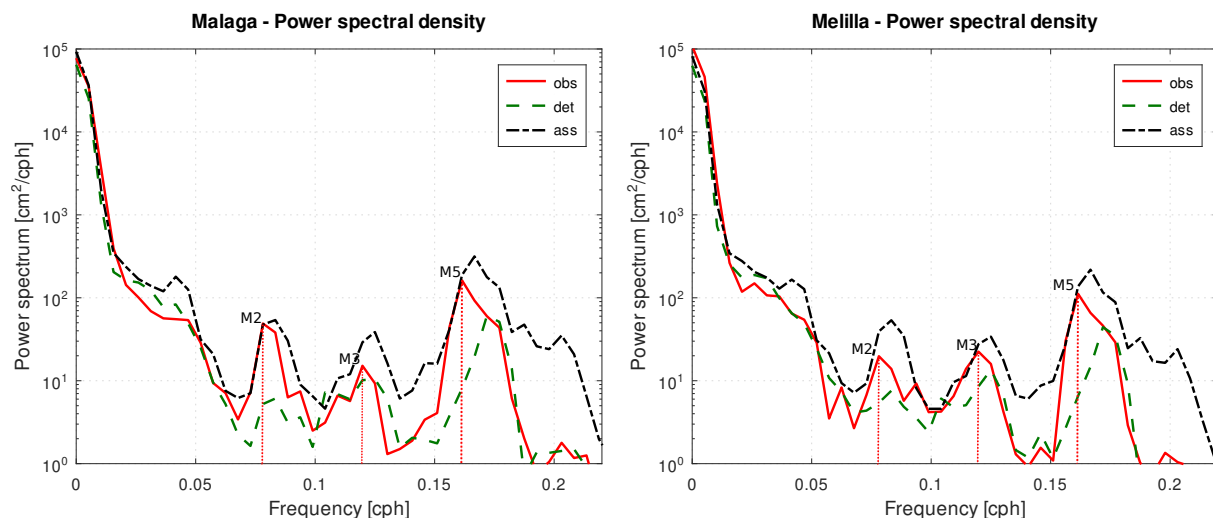


Figure 15. Power spectral density of the sea level in Malaga and Melilla, in the western Mediterranean Sea.

created correctly good quality of the perturbations. Probably, using localisation techniques, the improvement would be weaker, since these techniques limit the correction to areas much closer to the assimilated stations. Without localisation, the analysis increments extends to the entire computational grid (Fig. 13). Furthermore, from a physical point of view, the astronomical tide, as well as the other barotropic components, have large characteristic spatial lengths which translate into sea level correlations at large distances and in greater spatial effectiveness of the DA. What makes the astronomical tide different from the surge and seiches is instead its periodicity and being referred to a mean sea level perfectly constant in time. This avoids any bias in the departures of the assimilation, which are more difficult to deal with in the case of the surge and total sea level. These two facts probably contribute to making the astronomical tide results better than those for the other sea level components.

On the contrary, the surge component is not periodic at all and its error mainly depends on the errors in the atmospheric forcings. In the case of the Mediterranean Sea, which is surrounded by a complex orography and often subject to complex meteorological situations, the atmospheric models can have big large errors, due to the lack of resolution, of processes not resolved not resolved processes (hydrostatic models) and the lack of local DA. This error results in an error high resolution DA. Their errors result in errors in the surge component which cannot be corrected by the DA in the ocean model in the forecast simulations when making forecast. However, in the reanalysis simulation, if the assimilation step is short enough (e.g., hourly), the dynamical system is strongly driven by DA and the error in coming from the forcing cannot grow too much.

In the forecast simulations, the DA impact is due to the reduction of the error of the initial state. The error of the initial state propagates over time and sums up the error due to the bad atmospheric forcing atmospheric forcing error. Analysing the results statistically, the simulations without DA do not show much deterioration from the first to the third day of the forecast forecast day. However, this is not true in the case of extreme events, where when meteorological forcing generally has a greater larger error. In these cases, even the error of the initial state is often larger, due to pre-existing seiches deriving from previous storms. This error can be corrected by DA and the improvement extends several days, depending on the energy and the damping time of

the seiche oscillations. The DA improves not only the error in the seiche part but also those of ~~the~~ other sea level components, such as the tidal part (in the total sea level forecast) or the error of surge phenomena ~~in formation~~ which are growing at the time of the analysis. However, in order to catch the formation of a surge in an operational context, the EnKF should be executed with hourly updates, ~~but with~~. With one or two updates per day, ~~it~~ DA is still a valuable tool to correct the seiche and the ~~tide~~ tidal parts.

Regarding the computational ~~load~~ cost, although there is a need to use a significant number of ensemble members, this is rather low. The ensemble member simulations are perfectly parallel and can run independently between each analysis step. Moreover, barotropic simulations are fast as the equations are quite simple and there is no need to simulate the ~~advection-diffusion~~ advection/diffusion of temperature and salinity. Our workstation is a single-blade mid-level server, with 96 cores and the 81 ensemble members run in parallel ~~most of the time. It takes about five minutes to generate the ensemble of forcings and perturbed boundary conditions~~. The generation of the ensemble forcings and boundary conditions takes about five minutes, after which the ensemble simulations run parallel except in the 24 analysis steps, where the code is parallelised as well, ~~which are 24 in a daily simulation~~. The total time for carrying out the entire assimilation procedure is approximately 25 minutes, to which approximately ~~5 minutes are added for carrying~~ minutes are necessary to carry out five days of forecasting.

Finally, we dedicated the last part ~~of the results~~ to the study of the seiches. In the forecast, we have seen that the DA can lead to a significant improvement, especially where these oscillations are very energetic, as in the Adriatic Sea. ~~The reanalysis of the surge can be used for an in-depth study of the seiche propagation~~. As previously mentioned, while in the Adriatic Sea their characteristics are more studied, with the exception of the oscillation A4, which has an unclear origin, they have not been analysed much in the Mediterranean Sea. The observations in our possession confirm and partially correct the periods found in Schwab and Rao (1983), as far as the M2 and M3 modes are concerned. However, we did not detect the period of the main mode of the Mediterranean Sea, probably because it has not been triggered in the two months that we have analysed, but further investigation is needed. Then, we detected a Mediterranean barotropic oscillation with a period of 6.2 hours, which we called M5, but it is not present in the literature even if ~~it~~ its peak is evident in many validation (shown) and calibration (not shown) stations, along the coasts of the western Mediterranean basin. This oscillation, which is more energetic than ~~the~~ M2 and M3, is underestimated by the model without DA, ~~but and~~, even with the use of ~~the~~ DA, it is not reproduced correctly. Considering that oscillations with a longer period are reproduced better even if less energetic, it is possible that the DA has more difficulty in correcting the high-frequency oscillations. This may be due to the ~~assimilation timestep~~ timestep between the observations, every hour, which may be too long to ~~define~~ resolve these modes.

5 Conclusions

In this paper, we investigated the impact of DA in reproducing the barotropic components of the sea level in the Mediterranean Sea. We analysed the performances of the model without ~~DA in hindcast and forecast simulations~~ and with DA ~~with reanalysis and forecast simulations~~ in hindcast/reanalysis simulations and in forecast simulations starting from an initial hindcast or analysis state. The barotropic components of the sea level that we considered are the astronomical tide, the surge, with the

associated ~~seiche phenomena~~seiches, and the total sea level given by their sum. The results show very good performances of the DA ~~for the in~~ reanalysis, with the error in the tide reproduction reduced by a third, on average, and slightly worse performances, but always more than good, for the surge and the total sea level. In the case of the surge and the total sea level, the DA corrects them even in the presence of large errors in the ~~forcings~~atmospheric forcing, thanks to a sufficiently high assimilation frequency (one hour), a good number of ensemble members and a sufficient number of ~~observation stations~~assimilated observations. The improvements made by the DA in the forecast depend on the reduction of the error of the initial state, but the error coming from the ~~forcings and boundary conditions~~atmospheric forcing (and lateral boundary conditions) cannot be reduced. However, the DA ~~has still a good~~still has a positive impact, especially ~~in the first day~~on the first day forecast, gradually ~~less in~~decreasing the following days ~~, until reaching the performances of the simulations without DA. However, the~~until the simulations' performances without DA were reached. The improvement can last longer when seiche oscillations are present. ~~The decrease of the error of the initial state is propagated~~In this case, the initial correction propagates in the following days with a period and decay time equal to those of the triggered barotropic mode (seiche). Finally, still considering the forecast simulations, the bias error is lower in the total sea level simulations ~~are slightly better than~~than in the surge ones ~~thanks to a~~greater correction of the bias error.

In the last part of the results, we have analysed the periods of the barotropic modes (~~seiches~~) of the Adriatic and Mediterranean basins, obtained by the ~~observations~~observation power spectra and reproduced by the model. In Adriatic, we detected the periods of the two main modes (A1, A2), a fourth mode not well known (A4) and the third Mediterranean mode (M3). In the Mediterranean basin, outside the Adriatic, we detected the periods of the second and third modes (M2, M3) and of a mode that we called M5 (6.2 hours). We tested the reproduction of ~~these periods~~the associated power peaks by the model in the first-day forecast. While the periods are well reproduced also without DA, the energy of the spectral peaks improves with DA, thus confirming the better ~~seiche reproduction~~reproduction of these oscillations. We noticed also that ~~DA gives a better~~improvement in the DA improves more the low-frequency modes, while it has some difficulties with high-frequency modes. This is probably due to the sampling ~~frequency rate~~ of one hour, which is not enough high.

This work provides a preliminary test of the use of the DA for the reanalysis of tides and surges and seiches in the Mediterranean Sea. Reanalysis simulations can be extended to several years for climatological studies ~~and~~, obtaining good performances as the DA is able to ~~improve these quantities despite the deficiencies of the~~overtake deficiencies in the atmospheric forcing and boundary conditions. Further improvements ~~in the DA~~ for the reanalysis, where the error must be low during the whole simulation period, can be obtained using an ensemble Kalman smoother (EnKS). The EnKS is easily applicable to simulation with the EnKF if localisation techniques are not used. Always regarding DA methodologies, an improvement for the reanalysis, but also for the forecast, would be the use of parameter estimation techniques, ~~applicable to the enKF with~~using an "augmented state" in the EnKF (Evensen, 2009b). ~~In this way, one could calibrate some~~The parameter estimation allows to calibrate some model parameters, typically the drag coefficient at the bottom. This method could reduce the model error ~~, but~~but then also the DA in its traditional ~~form must be used~~should be used in order to reduce the error of the initial (~~background~~) state. Finally, ~~the addition of other observations~~increasing the number of the assimilated observations, from in-situ stations and ~~altimeter satellites~~altimeters, would lead to a further improvement, especially if these are available in areas ~~currently not~~

not well covered. However, while the use of in-situ data is quite ~~immediate, easy, as discussed before~~ the altimetric data are difficult to use ~~for the storm surge improvement~~in storm surge applications (Bajo et al., 2017) and further ~~studies~~investigations are needed.

660 For what concerns the ~~study of the seiches and of the normal barotropic modes of~~barotropic modes in the Mediterranean and Adriatic basins, ~~further investigations are necessary. Some barotropic modes~~some of them are not well understood and their shapes, periods and decay times ~~must~~should be determined with more precision. In this context, DA can be used to provide a reliable reanalysis of the surge from which to extract the seiche ~~component~~part.

665 The ~~modelling configuration tested here~~model and the DA system tested in this work will be used, with a similar configuration, in an operational system for forecasting the sea level ~~on~~in several locations of the Mediterranean coasts, with a focus on the Italian coasts. ~~This~~The system will be installed at the ISPRA Centre and will ~~use the assimilation of~~retrieve the observations from the stations along the Italian coast, providing a five-day forecast~~of the total sea level~~.

Code availability. The hydrodynamic model can be downloaded at: <https://github.com/SHYFEM-model/shyfem>. The modified version of the model, with the data assimilation code at: <https://github.com/marcobj/shyfem>

670 **Appendix A: In-situ coastal stations**

In this appendix we report the table with the in-situ stations, their identification numbers and their positions. We used these stations in the paper for the data assimilation and as validation stations.

Table A1. List of stations with sea-level sea level measurements. The stations with an asterisk are those used in the validation, while the others have been assimilated. The numbering is the one used in the paper and the their geographical coordinates of their position are reported as well.

ID	Lon	Lat	Station	ID	Lon	Lat	Station
1	-2.930	35.290	Melilla	35	14.750	40.676	Salerno
2	-4.417	36.711	Malaga	36	15.275	40.029	Palinuro
3	-3.520	36.720	Motril	37	15.190	38.785	Ginostra
4	-2.478	36.830	Almeria	38	8.403	40.842	Porto-Torres
5	-1.899	36.974	Carboneras	39	9.114	39.210	Cagliari
6*	-0.973	37.596	Murcia	40*	8.309	39.147	Carloforte
7	-0.481	38.338	Alicante	41*	13.371	38.121	Palermo
8	-0.310	39.440	Valencia	42	13.076	37.504	Sciaccia
9*	1.419	38.734	Formentera	43	13.526	37.285	Porto-Empedocle
10	1.450	38.917	Ibiza	44	15.093	37.498	Catania
11	3.117	39.867	Alcudia	45	12.604	35.499	Lampedusa
12	1.213	41.078	Tarragona	46	17.137	39.083	Crotone
13	2.160	41.340	Barcelona	47	17.223	40.475	Taranto
14	3.107	42.520	Port-Vendres	48	18.497	40.147	Otranto
15	3.699	43.397	Sete	49	16.866	41.140	Bari
16	4.893	43.405	Fos-sur-Mer	50*	16.177	41.888	Vieste
17	5.914	43.122	Toulon	51	15.501	42.119	Tremiti
18	6.717	43.359	Port-Ferreol	52	14.414	42.355	Ortona
19*	6.933	43.483	La-Figueirette	53	13.890	42.960	San-Benedetto-del-Tronto
20	7.421	43.728	Monaco	54	13.506	43.624	Ancona
21	9.350	42.967	Centuri	55	12.282	44.492	Ravenna
22	8.938	42.635	Ile-Rousse	56	12.426	45.418	Venice
23	8.760	41.920	Ajaccio	57*	12.511	45.313	AAOT
24*	9.374	41.836	Solenzara	58	13.757	45.649	Trieste
25	8.018	43.878	Imperia	59	21.319	37.640	Katakolo
26	8.870	44.380	Genova	60*	23.621	37.935	Peiraia
27*	9.857	44.096	La-Spezia	61	24.941	37.438	Syros
28	10.299	43.546	Livorno	62*	35.653	34.242	Batroun
29	10.238	42.742	Marina-di-Campo	63*	29.879	31.209	Alexandria
30	11.789	42.093	Civitavecchia				
31	12.634	41.446	Anzio				
32	12.965	40.895	Ponza				
33*	13.589	41.209	Gaeta				
34	14.269	40.841	Napoli				

Author contributions. Marco Bajo: writing and reviewing the paper, developing the data assimilation code and its binding to SHYFEM, running some simulations, processing the results. Christian Ferrarin: Reviewing the paper, running some simulations, processing the results.
675 Georg Umgiesser: Developing the SHYFEM code. Andrea Bonometto and Elisa Coraci: Providing the atmospheric forcing, financial support.

Competing interests. We do not have any competing interests.

Acknowledgements. We thank ISPRA for supporting the development of an operational system for forecasting the sea level along the Italian coasts.

References

- 680 Bajo, M.: Improving storm surge forecast in Venice with a unidimensional Kalman filter, *Estuarine, Coastal and Shelf Science*, 239, 106–117, <https://doi.org/https://doi.org/10.1016/j.ecss.2020.106773>, 2020.
- Bajo, M. and Umgiesser, G.: Storm surge forecast through a combination of dynamic and neural network models, *Ocean Modelling*, 33, 1–9, <https://doi.org/https://doi.org/10.1016/j.ocemod.2009.12.007>, 2010.
- Bajo, M., Zampato, L., Umgiesser, G., Cucco, A., and Canestrelli, P.: A finite element operational model for storm surge prediction in Venice, *Estuarine, Coastal and Shelf Science*, 75, 236–249, <https://doi.org/https://doi.org/10.1016/j.ecss.2007.02.025>, biodiversity and Ecosystem Functioning in Coastal and Transitional Waters, 2007.
- 685 Bajo, M., Biasio, F. D., Umgiesser, G., Vignudelli, S., and Zecchetto, S.: Impact of using scatterometer and altimeter data on storm surge forecasting, *Ocean Modelling*, 113, 85–94, <https://doi.org/10.1016/j.ocemod.2017.03.014>, 2017.
- Bajo, M., Medugorac, I., Umgiesser, G., and Orlić, M.: Storm surge and seiche modelling in the Adriatic Sea and the impact of data assimilation, *Quarterly Journal of the Royal Meteorological Society*, 145, 2070–2084, <https://doi.org/10.1002/qj.3544>, 2019.
- 690 Barbariol, F., Pezzutto, P., Davison, S., Bertotti, L., Cavaleri, L., Papa, A., Favaro, M., Sambo, E., and Benetazzo, A.: Wind-wave forecasting in enclosed basins using statistically downscaled global wind forcing, *Frontiers in Marine Science*, 9, <https://doi.org/10.3389/fmars.2022.1002786>, 2022.
- Bertin, X., Li, K., Roland, A., Zhang, Y. J., Breilh, J. F., and Chaumillon, E.: A modeling-based analysis of the flooding associated with Xynthia, central Bay of Biscay, *Coastal Engineering*, 94, 80–89, <https://doi.org/https://doi.org/10.1016/j.coastaleng.2014.08.013>, 2014.
- 695 Birol, F., Fuller, N., Lyard, F., Cancet, M., Niño, F., Delebecque, C., Fleury, S., Toubanc, F., Melet, A., Saraceno, M., and Léger, F.: Coastal applications from nadir altimetry: Example of the X-TRACK regional products, *Advances in Space Research*, 59, 936–953, <https://doi.org/https://doi.org/10.1016/j.asr.2016.11.005>, 2017.
- Byrne, D., Horsburgh, K., and Williams, J.: Variational data assimilation of sea surface height into a regional storm surge model: Benefits and limitations, *Journal of Operational Oceanography*, 0, 1–14, <https://doi.org/10.1080/1755876X.2021.1884405>, 2021.
- 700 Carrassi, A., Bocquet, M., Bertino, L., and Evensen, G.: Data assimilation in the geosciences: An overview of methods, issues, and perspectives, *Wiley Interdisciplinary Reviews: Climate Change*, 9, e535, <https://doi.org/10.1002/wcc.535>, 2018.
- Carrère, L. and Lyard, F.: Modeling the barotropic response of the global ocean to atmospheric wind and pressure forcing - comparisons with observations, *Geophysical Research Letters*, 30, <https://doi.org/https://doi.org/10.1029/2002GL016473>, 2003.
- 705 Cavaleri, L., Bajo, M., Barbariol, F., Bastianini, M., Benetazzo, A., Bertotti, L., Chiggiato, J., Davolio, S., Ferrarin, C., Magnusson, L., Papa, A., Pezzutto, P., Pomaro, A., and Umgiesser, G.: The October 29, 2018 storm in Northern Italy – An exceptional event and its modeling, *Progress in Oceanography*, 178, 102–117, <https://doi.org/https://doi.org/10.1016/j.pocean.2019.102178>, 2019.
- Cerovecki, I., Orlić, M., and Hendershott, M. C.: Adriatic seiche decay and energy loss to the Mediterranean, *Deep Sea Research Part I: Oceanographic Research Papers*, 44, 2007 – 2029, [https://doi.org/10.1016/S0967-0637\(97\)00056-3](https://doi.org/10.1016/S0967-0637(97)00056-3), 1997.
- 710 Clementi, E., Aydogdu, A., Goglio, A., Pistoia, J., Escudier, R., Drudi, M., Grandi, A., Mariani, A., Lyubartsev, V., Lecci, R., Cretí, S., Coppini, G., Masina, S., and Pinaridi, N.: Mediterranean Sea Physical Analysis and Forecast (CMEMS MED-Currents, EAS6 system) (Version 1), https://doi.org/10.25423/CMCC/MEDSEA_ANALYSISFORECAST_PHY_006_013_EAS7, 2021.
- Evensen, G.: Sequential data assimilation with a nonlinear quasi-geostrophic model using Monte Carlo methods to forecast error statistics, *Journal of Geographical Research*, 99, 10, 143–162, 1994.

- 715 Evensen, G.: The Ensemble Kalman Filter: theoretical formulation and practical implementation, *Ocean Dynamics*, 53, 343–367, <https://doi.org/10.1007/s10236-003-0036-9>, 2003.
- Evensen, G.: Sampling strategies and square root analysis schemes for the EnKF, *Ocean Dynamics*, 54, 539–560, <https://doi.org/10.1007/s10236-004-0099-2>, 2004.
- Evensen, G.: Spurious correlations, localization, and inflation, pp. 237–253, Springer Berlin Heidelberg, Berlin, Heidelberg, 720 https://doi.org/10.1007/978-3-642-03711-5_15, 2009a.
- Evensen, G.: The ensemble Kalman filter for combined state and parameter estimation, *IEEE Control Systems Magazine*, 29, 83–104, <https://doi.org/10.1109/MCS.2009.932223>, 2009b.
- Fernández-Montblanc, T., Vousedoukas, M., Ciavola, P., Voukouvalas, E., Mentaschi, L., Breyiannis, G., Feyen, L., and Salamon, P.: Towards robust pan-European storm surge forecasting, *Ocean Modelling*, 133, 129–144, 725 <https://doi.org/https://doi.org/10.1016/j.ocemod.2018.12.001>, 2019.
- Ferrarin, C., Roland, A., Bajo, M., Umgiesser, G., Cucco, A., Davolio, S., Buzzi, A., Malguzzi, P., and Drofa, O.: Tide-surge-wave modelling and forecasting in the Mediterranean Sea with focus on the Italian coast, *Ocean Modelling*, 61, 38–48, <https://doi.org/https://doi.org/10.1016/j.ocemod.2012.10.003>, 2013.
- Ferrarin, C., Bellafore, D., Sannino, G., Bajo, M., and Umgiesser, G.: Tidal dynamics in the inter-connected Mediterranean, Marmara, Black 730 and Azov seas, *Progress in Oceanography*, 161, 102–115, <https://doi.org/https://doi.org/10.1016/j.pocean.2018.02.006>, 2018.
- Ferrarin, C., Bajo, M., Benetazzo, A., Cavaleri, L., Chiggiato, J., Davison, S., Davolio, S., Lionello, P., Orlić, M., and Umgiesser, G.: Local and large-scale controls of the exceptional Venice floods of November 2019, *Progress in Oceanography*, 197, 102 628, <https://doi.org/https://doi.org/10.1016/j.pocean.2021.102628>, 2021.
- Flowerdew, J., Horsburgh, K., Wilson, C., and Mylne, K.: Development and evaluation of an ensemble forecasting system for coastal storm 735 surges, *Quarterly Journal of the Royal Meteorological Society*, 136, 1444–1456, <https://doi.org/https://doi.org/10.1002/qj.648>, 2010.
- Gaspari, G. and Cohn, S. E.: Construction of correlation functions in two and three dimensions, *Quarterly Journal of the Royal Meteorological Society*, 125, 723–757, <https://doi.org/https://doi.org/10.1002/qj.49712555417>, 1999.
- Hersbach, H.: Sea Surface Roughness and Drag Coefficient as Functions of Neutral Wind Speed, *Journal of Physical Oceanography*, 41, 247 – 251, <https://doi.org/10.1175/2010JPO4567.1>, 2011.
- 740 Horsburgh, K., Haigh, I., Williams, J., De Dominicis, M., Wolf, J., Inayatillah, A., and Byrne, D.: "Grey swan" storm surges pose a greater coastal flood hazard than climate change, *Ocean Dynamics*, 71, 715–730, <https://doi.org/https://doi.org/10.1007/s10236-021-01453-0>, 2021.
- Järvinen, H. and Undén, P.: Observation screening and background quality control in the ECMWF 3D-Var data assimilation system, p. 33, <https://doi.org/10.21957/lyd3q81>, 1997.
- 745 Kalnay, E.: Atmospheric Modeling, Data Assimilation and Predictability, Cambridge University Press, <https://doi.org/10.1017/CBO9780511802270>, 2002.
- Keper, J. D.: On ensemble representation of the observation-error covariance in the Ensemble Kalman Filter, *Ocean Dynamics*, 54, 561–569, <https://doi.org/https://doi.org/10.1007/s10236-004-0104-9>, 2004.
- Lyard, F. H., Allain, D. J., Cancet, M., Carrère, L., and Picot, N.: FES2014 global ocean tide atlas: design and performance, *Ocean Science*, 750 17, 615–649, <https://doi.org/10.5194/os-17-615-2021>, 2021.

- Mariani, S., Casaioli, M., Coraci, E., and Malguzzi, P.: A new high-resolution BOLAM-MOLOCH suite for the SIMM forecasting system: assessment over two HyMeX intense observation periods, *Natural Hazards and Earth System Sciences*, 15, 1–24, <https://doi.org/10.5194/nhess-15-1-2015>, 2015.
- 755 Međugorac, I., Pasarić, M., Pasarić, Z., and Orlić, M.: Two recent storm-surge episodes in the Adriatic, *International Journal of Safety and Security Engineering*, 6, 589 – 596, <https://doi.org/10.2495/SAFE-V6-N3-589-596>, 2016.
- Pérez, B., Fanjul, E. A., Pérez, S., De Alfonso, M., and Vela, J.: Use of tide gauge data in operational oceanography and sea level hazard warning systems, *Journal of Operational Oceanography*, 6, 1–18, <https://doi.org/10.1080/1755876X.2013.11020147>, 2013.
- Proudman, J.: The Effects on the Sea of Changes in Atmospheric Pressure., *Geophysical Journal International*, 2, 197–209, <https://doi.org/https://doi.org/10.1111/j.1365-246X.1929.tb05408.x>, 1929.
- 760 Pugh, D. T.: Tides, surges and mean sea-level (reprinted with corrections), John Wiley & Sons Ltd, 1996.
- Roland, A., Cucco, A., Ferrarin, C., Hsu, T.-W., Liao, J.-M., Ou, S.-H., Umgiesser, G., and Zanke, U.: On the development and verification of a 2-D coupled wave-current model on unstructured meshes, *Journal of Marine Systems*, 78, S244–S254, <https://doi.org/https://doi.org/10.1016/j.jmarsys.2009.01.026>, coastal Processes: Challenges for Monitoring and Prediction, 2009.
- Sakov, P., Counillon, F., Bertino, L., Lisæter, K. A., Oke, P. R., and Korabely, A.: TOPAZ4: an ocean-sea ice data assimilation system for the 765 North Atlantic and Arctic, *Ocean Science*, 8, 633–656, <https://doi.org/10.5194/os-8-633-2012>, 2012.
- Schwab, D. and Rao, D.: Barotropic oscillations of the Mediterranean and Adriatic seas, *Tellus*, 35(A), 417–427, 1983.
- Scicchitano, G., Scardino, G., Monaco, C., Piscitelli, A., Milella, M., De Giosa, F., and Mastronuzzi, G.: Comparing impact effects of common storms and Medicanes along the coast of south-eastern Sicily, *Marine Geology*, 439, <https://doi.org/10.1016/j.margeo.2021.106556>, 2021.
- 770 Smagorinsky, J.: General circulation experiments with the primitive equations: I. the basic experiment, *Monthly Weather Review*, 91, 99–164, [https://doi.org/10.1175/1520-0493\(1963\)091<0099:GCEWTP>2.3.CO;2](https://doi.org/10.1175/1520-0493(1963)091<0099:GCEWTP>2.3.CO;2), 1963.
- Storto, A.: Variational quality control of hydrographic profile data with non-Gaussian errors for global ocean variational data assimilation systems, *Ocean Modelling*, 104, 226–241, <https://doi.org/https://doi.org/10.1016/j.ocemod.2016.06.011>, 2016.
- Taylor, K. E.: Summarizing multiple aspects of model performance in a single diagram, *Journal of Geophysical Research: Atmospheres*, 106, 775 7183–7192, <https://doi.org/https://doi.org/10.1029/2000JD900719>, 2001.
- Tsimplis, M. N., Proctor, R., and Flather, R. A.: A two-dimensional tidal model for the Mediterranean Sea, *Journal of Geophysical Research: Oceans*, 100, 16 223–16 239, <https://doi.org/https://doi.org/10.1029/95JC01671>, 1995.
- Umgiesser, G. and Bergamasco, A.: A staggered grid finite element model of the Venice Lagoon, in: *Finite Element in Fluids*, edited by Periaux, J., Morgan, K., Ofiate, E., and Zienkiewicz, O., pp. 659–668, Pineridge Press, Swansea, 1993.
- 780 Vilibić, I.: The role of the fundamental seiche in the Adriatic coastal floods, *Continental Shelf Research*, 26, 206 – 216, <https://doi.org/10.1016/j.csr.2005.11.001>, 2006.
- Vilibić, I., Domijan, N., and Cupic, S.: Wind versus air pressure seiche triggering in the Middle Adriatic coastal waters, *Journal of Marine Systems*, 57, 189 – 200, <https://doi.org/10.1016/j.jmarsys.2005.04.007>, 2005.
- Šepić, J., Pasarić, M., Međugorac, I., Vilibić, I., Karlović, M., and Mlinar, M.: Climatology and process-oriented analysis of the Adriatic sea 785 level extremes, *Progress in Oceanography*, 209, 102 908, <https://doi.org/https://doi.org/10.1016/j.pocean.2022.102908>, 2022.
- Welch, P.: The use of fast Fourier transform for the estimation of power spectra: A method based on time averaging over short, modified periodograms, *IEEE Transactions on Audio and Electroacoustics*, 15, 70–73, <https://doi.org/10.1109/TAU.1967.1161901>, 1967.