

Hyper-resolution PCR-GLOBWB: opportunities and challenges of refining model spatial resolution to 1 km over the European continent

Jannis M. Hoch^{1,2}, Edwin H. Sutanudjaja¹, Niko Wanders¹, Rens L.P.H. van Beek¹, Marc F.P. Bierkens^{1,3}

¹Department of Physical Geography, Utrecht University, Utrecht, the Netherlands

²Fathom, Bristol, United Kingdom

³Deltares, Utrecht, the Netherlands

Correspondence to: Jannis M. Hoch (j.m.hoch@uu.nl)

Abstract. The quest for hydrological hyper-resolution modelling is already on-going for more than a decade. While global hydrological models (GHMs) have seen a reduction in grid size, thus far they never have been consistently applied at hyper-resolution (≤ 1 km) at the large scale. Here, we present the first application of the GHM PCR-GLOBWB at 1 km over Europe. We thoroughly evaluated simulated discharge, evaporation, soil moisture, and terrestrial water storage anomalies against long-term observations, and subsequently compared results with the ‘established’ 10 km and 50 km resolutions of PCR-GLOBWB. Subsequently, we could assess the added value of this first hyper-resolution version of PCR-GLOBWB as well as assess scale dependencies of model and forcing resolution. Eventually, these insights can help understanding current challenges and opportunities of hyper-resolution models and formulating model and data requirements for future improvements.

We found that for most variables epistemic uncertainty is still large, and issues with scale commensurability exist with respect to the long-term yet coarse observations used. Merely for simulated discharge we can confidently state that model output at hyper-resolution improves over coarser resolutions, due to better representation of the river network at 1 km. However, currently available observations are not yet widely available at hyper-resolution or lack sufficiently long timeseries, which makes it difficult to assess the performance of the model for other variables at hyper resolution. Here, additional model validation efforts are needed. At the model side, hyper-resolution applications require careful revisiting of model parameterization and possibly implementation of more physical processes to be able to resemble the dynamics and spatial heterogeneity at 1 km.

With this first application of PCR-GLOBWB at 1 km, we contribute to meeting the ‘grand challenge’ of hyper-resolution modelling. Even though the model was only assessed at the continental scale, valuable insights could be gained which have global validity. As such, it should be seen as a modest milestone on a longer journey towards locally relevant model output. This, however, requires a community effort from domain experts, model developers, research software engineers, and data providers.

Deleted: ³,

Deleted: ²,

Formatted: Not Superscript/ Subscript

Formatted: Not Superscript/ Subscript

Deleted: ⁴

Deleted: ²Department of Finance, Imperial College London, London, United Kingdom
³Fathom

Deleted: ⁴Deltares

Deleted: understand

Deleted: .

Deleted: . This first large-scale hyper-resolution modelling attempt shows that applying a GHM consistently is now feasible due to improved data availability and computer power. Also, simulated discharge improves...

Deleted: improved

Formatted: Not Highlight

Deleted: which

Deleted: both

1. Introduction

Climate change is projected to impact patterns and intensity of precipitation and temperature world-wide, resulting in increased occurrence of hydrological extremes and, in turn, to rising hazard probability and risk globally (Dottori et al., 2018; Hirabayashi et al., 2013; Winsemius et al., 2016; Ward et al., 2020b; van der Wiel et al., 2019). To explore large-scale climate adaption options and mitigation measures, as well as the efficacy of risk management plans, output from global hydrological models (GHMs) is increasingly employed as a basis for discussion and policy-making. Examples are the Aqueduct Flood Analyzer (Aqueduct Global Flood Analyzer, 2021; Ward et al., 2020a), the Aqueduct Water Risk Atlas (Hofste et al., 2019), the WWF Water Risk Filter (WWF, 2022), and water2invest (Straatsma et al., 2020; water2invest web service, 2021).

One of the main advantages of GHMs is that their outputs are readily available and provide spatially and temporally consistent estimates of hazard probability and risks (Bierkens, 2015). However, global climate change impacts are often evaluated at the level of river basins or at country-scale. Therefore, it is critical that the use of GHMs, which typically employ a relatively coarse spatial resolution (≥ 5 arc-min, equivalent to around 100 km^2 at the Equator), is fit for purpose and the current GHMs are used as intended (Ward et al., 2015). Nevertheless, the actual impact of hydrologic hazards happens at the local level and may vary greatly within countries which pushes the boundaries of applicability of the current generation of GHMs. To capture these important spatial variations and to eventually make GHMs “locally relevant” (Bierkens et al., 2015) and usable by local water managers (Beven and Cloke, 2012), it is hence the current understanding that models need to move towards “hyper-resolution” (Wood et al., 2011; Bierkens et al., 2015), that is to a spatial resolution below 1 km^2 (30 arc-seconds). With hydrologic hazards already having increased and projected to increase further (see e.g. Winsemius et al. (2016), Alfieri et al. (2017), Samaniego et al. (2018), van der Wiel et al. (2019), and the work of the World Weather Attribution initiative (Kew et al., 2021; Philip et al., 2019)), it is paramount to better understand their impact not only for entire economies, but also more granular on the sub-national to community level. Once actionable local model output becomes available, large-scale and target-oriented adaptation and mitigation measures can be devised.

Global models have their own *raison d’être* as discussed in Ward et al. (2015), for instance analyses over data-sparse areas or continuous trans-boundary simulations, thereby complementing bespoke local and country-scale models which may already be able to run at hyper-resolution. Moving towards hyper-resolution may potentially improve these analyses and, as a result, their meaningfulness and applicability. However, due to issues with, *inter alia*, model parameterization as well as computational demand, running GHMs at a meaningful and actionable spatial resolution over large extents was considered to be a “grand challenge” (Bierkens et al., 2015; Wood et al., 2011).

With computational power increasing and input data sets becoming available at ever finer spatial resolutions, the spatial resolution of current GHMs has increased in past years too. Currently, most GHMs can be run globally at a resolution of 5 to 6 arc-min according to Bierkens et al. (2015). However, a grid cell at a resolution of 5 arc-min still translates to roughly 10^2 km^2 at the Equator. Recently, various modeling attempts were made to further increase spatial resolution or to pave the way towards hyper-resolution. For example, the HydroBlocks model (Chaney et al., 2016) was coupled with remotely sensed data to obtain soil moisture estimates at 30 m spatial resolution over the continental United States of America (CONUS) (Vergopolan et al., 2020, 2021). While HydroBlocks brings the simulations to an effective 30 m resolution, it still takes advantages of grouping regions based on hydrological similarity to reduce computational demands. O’Neill et al. (2021) applied and evaluated the hydrological model ParFlow (Maxwell et al., 2015) configured over the CONUS at 1 km spatial resolution covering the years 2003 until 2006, constituting the first-of-its-kind studies covering such an extensive area at ‘true’ hyper-resolution. Aerts et al. (2021) assessed changes of model accuracy of the hydrological model wflow_sbm (Schellekens et al., 2020) at multiple resolutions below 1 km^2 for the CAMELS dataset (Newman et al., 2015; Addor et al., 2017) again solely covering the CONUS. While the spatial resolution applied is ‘hyper-resolution’, the lack of either spatially-continuous simulations over large extents or short simulation periods make it challenging to define a substantial benchmark that is representative to the realm of GHMs. Other studies already proposed scalable routing networks (Thober et al., 2019) and measures how to seamlessly model across scales (Samaniego et al., 2010, 2017) which are essential when moving towards hyper-resolution.

Moved (insertion) [1]

Deleted: ¶

Formatted: Not Highlight

Formatted: Not Highlight

On a more general note, the call for “hyper-resolution” is strongly driven by an expected increase of model accuracy and consequently applicability. One hypothesis thereby is that particularly locations with a small upstream area will profit as more interactions will be simulated there and that representation of the storage and response times in these regions are improved. The question whether this is really the case depends also on the ability to populate the many fine resolution cells with accurate parameters (Wood et al., 2011; Beven and Cloke, 2012). It is believed that this is not possible without additional locally specific information and as such Beven et al. (2015) concluded that hyper-resolution modelling will not achieve the necessary accuracy. Thus, we first need to establish an understanding to what extent accuracy of GHMs is improved when only their resolution is increased while still employing globally available datasets currently used for parameterizing GHMs. Even though models at different resolutions should ideally use bespoke parameterization and input data when applied at these three resolutions, we kept both as unaltered as possible to be able to better separate the impact of spatial resolution.

A second avenue towards improved model accuracy is the use of more accurate meteorological forcing. In studies using GHMs, it is shown that particularly the quality and spatial resolution of meteorological variables, notably precipitation, can have a pronounced impact on model accuracy (Beck et al., 2020; Towner et al., 2019; Biemans et al., 2009). Hence, a second question is raised whether it is needed to go all the way to “model hyper-resolution” or if using “forcing hyper-resolution” with current GHMs already suffices. This would reduce the need for updated model parameterization and design as well as greatly shorten run times and reduce model data storage requirements. A locally relevant spatial resolution could then be achieved using post-processing tools, for instance.

The main objective of this paper is therefore to increase our understanding of scale dependencies of both the model and the meteorological input and formulate ways forward towards meeting the above-named “grand challenge”. To that end, we developed a 30 arc-seconds (~1 km) version of the existing 10 km PCR-GLOBWB model (Sutanudjaja et al., 2018) for the entire European continent and applied it over the period 1981 until 2019. As such, it constitutes a first-of-its-kind effort to set-up, run, and evaluate a GHM at hyper-resolution over multiple decades. We acknowledge that this constitutes only a continental-scale application of a global model, but study set-up and choice of data sets has been made such that both methods and findings can potentially be transferred to the global scale. The main reason to focus on Europe only is the data richness there improving our ability to better create and evaluate models. The model was used to test how a stepwise increase in spatial resolution (30 arc-min/~50 km, 5 arc-min/~10 km, 30 arc-sec/~1 km) impacts model accuracy. To test the impact of forcing resolution, the model simulations at the different spatial resolutions were forced with ERA5-Land data (Muñoz-Sabater et al., 2021) at the same spatial resolutions or coarser. Finally, we combine both experiments to disentangle the relative importance of the model and forcing resolution. Except for the precipitation forcing, all simulations make use of the same input and parameter sets and are downscaled or upscaled only if necessary. In our analysis, we focus not merely on simulated discharge as done by Aerts et al. (2021), for instance, but also on terrestrial water storage anomalies, evaporation, and soil moisture to provide a more holistic picture of model performance than what is typically the norm (see O’Neill et al., 2021). Such a very first thorough analysis of a hyper-resolution GHM is in the first place not intended to claim that hyper-resolution should be the “new normal” for GHMs, but rather to gather opportunities and challenges of the scale dependencies of refining the spatial resolution of the model and its forcing. These insights may help identifying the most effective model development pathways and advancing current efforts to produce spatially consistent and locally relevant estimates at (sub-)kilometer scale.

2. Methods, data, and study area

2.1. Study area and input data

In addition to the already existing global schematizations of PCR-GLOBWB at 30 arc-min (roughly 50 km cell length at the Equator) and 5 arc-minutes (roughly 10 km cell length at the Equator), respectively, we developed a novel 30 arc-seconds (roughly 1 km cell length at the Equator) schematization.

The study period for which each run was executed is 1981 until 2019 at a daily timestep. However, to reduce storage requirements and due to the timestep of most observations, our evaluations focused on the monthly timestep except for discharge analysis where both daily and monthly timestep were used.

Deleted:

Formatted: Not Highlight

Field Code Changed

Deleted: To answers test these hypotheses

Formatted: Not Highlight

Deleted: , thereby helping to identify

Commented [BM(1)]: I think that this well-written piece better fits above where you explain the urgency of hyper-resolution modelling.

Commented [BM(2)]: This can be merged somehow with the last sentence of the previous paragraph.

Deleted: .

Moved up [1]: With hydrologic hazards already having increased and projected to increase further (see e.g. Winsemius et al. (2016), Alfieri et al. (2017), Samaniego et al. (2018), van der Wiel et al. (2019), and the work of the World Weather Attribution initiative (Kew et al., 2021; Philip et al., 2019)), it is paramount to better understand their impact not only for entire economies, but also more granular on the sub-national to community level. Once actionable local model output becomes available, large-scale and target-oriented adaptation and mitigation measures can be devised.

Deleted: In anticipation of the first global-scale 1 km GHM, the here presented evaluation of the relative impact of refining the spatial resolution of the model and its forcing may provide an important contribution to the discussion and advancement of global hydrologic modelling at hyper-resolution.

Deleted: Even though the 1 km model schematization of PCR-GLOBWB can be scaled up globally, we selected Europe to test the model and assess output due to the quality of input data (soil, geology, meteorological forcing), the abundance of observational validation data, particularly GRDC discharge observation data. Compared to a global study, it will bring the added benefit of reduced computational demand and storage allocation, which is already challenging for this hyper-resolution continental-scale application.

Formatted: Strikethrough

Each of the model resolutions¹ was forced with precipitation at the model resolution or coarser, yielding in total six combinations of model and forcing spatial resolutions (see Table 1).

Field Code Changed

Table 1: Overview of model and forcing as well as used run names

Model	Forcing	Run name
PCR-GLOBWB 50 km	ERA5-Land 50 km	50k 50k
PCR-GLOBWB 10 km	ERA5-Land 50 km	10k 50k
PCR-GLOBWB 10 km	ERA5-Land 10 km	10k 10k
PCR-GLOBWB 1 km	ERA5-Land 50 km	1k 50k
PCR-GLOBWB 1 km	ERA5-Land 10 km	1k 10k
PCR-GLOBWB 1 km	ERA5-Land 1 km	1k 1k

5 For all three spatial resolutions, identical model input data and parameter sets are used to guarantee comparability across set-ups. The ‘default’ resolution is 1 km, meaning that all model development including runoff, soil, and groundwater processes, was geared towards this resolution and all other resolutions are derivatives. A detailed overview over datasets used for model parameterization and forcing input can be found in A1. Appendix A, including the scaling techniques used to derive them at various resolutions (i.e., 1 km, 30 km, and 50 km). It should be mentioned here that resampling the default 1 km data to coarser resolution affects model schematization (Samaniego et al., 2017) although greatest care was taken to minimize this effect. Hence, the impact of using different model resolutions is not assessed in isolation but rather in its bigger context of how the model schematization would appear for a given model resolution. Each run includes water demand and use for irrigation, industry, livestock, and household as well as accounts for reservoir storage based on the GranD database (Lehner et al., 2011). Note that none of the runs were calibrated to not have differences in parameterization affect the comparability across different model resolutions and forcing resolutions.

Deleted: A1. Appendix A

Formatted: Not Highlight

Formatted: Not Highlight

Formatted: Not Highlight

2.2. Model evaluation

20 To fully grasp the impact of an increase in spatial resolution on hydrological states and fluxes, various model output variables were compared to observations: simulated discharge, total evaporation, terrestrial water storage anomaly, and upper layer soil moisture. When selecting the observational data sets, we preferred a long record over spatial resolution due to two reasons: *i*) because a long observational record is needed to establish a benchmark of hyper-resolution as intended here, potentially also capturing interannual variability and hydrological extremes; *ii*) the coarser-scale simulations greatly reduce the added value of fine-resolution observations. Additionally, we benchmarked the computational demand of the various runs performed. While discharge was evaluated at locations, the other variables were evaluated at the water province level (Straatsma et al., 2020). Hereby water provinces smaller than the coarsest cell size of the observational data used (here: the original 3-degree footprint of the GRACE/GRACE-FO data, see section 2.2.4) were merged with the adjacent province having the longest common border. While the use of these water provinces, which serve as a ‘common denominator’ across the multiple spatial resolutions used, allows us to make a fair comparison across the different model set-ups, it also has the downside that some level of detail is lost, particularly for the simulations with finer spatial resolution. Nevertheless, there are still sufficient water provinces to make robust conclusions.

Formatted: Not Highlight

Formatted: Not Highlight

35 It should be noted that by evaluating the 1 km hyper-resolution outputs at the water province level, we can only assess the overall performance of these simulations, rather than site-specific improvements. While it would be preferable to evaluate the model simulations at the native 1 km resolution this is difficult due to the coarse spatial resolution of some of the validation datasets.

2.2.1. Simulated discharge

To evaluate simulated monthly discharge, we employed data from the Global Run-off Data Centre (GRDC). To assess the accuracy of monthly simulated discharge, we determined the Kling-Gupta Efficiency (KGE; Gupta et

¹ The term ‘resolution’ refers to spatial resolution throughout this manuscript, if not specifically stated otherwise

al. (2009)). Based on Knoben et al. (2019), a value of $KGE \geq -0.41$ indicates that the model improves upon the mean flow benchmark.

For meaningful analyses, we used only GRDC stations from our dataset which met the following requirements: *i*) the timeseries of a station extends at least until 1991; *ii*) the timeseries of a station contains at least 10 years of data; *iii*) the catchment area of a station is at least 400 km², which is equivalent to four upstream cells for the 10k resolution. This yielded in total 564 stations. Since this large number of stations did not allow manual matching of their locations and the model river network, we determined the corresponding model cell by searching for the smallest deviation between mean observed and simulated discharge in proximity of the location as specified by GRDC. This radius was determined by testing, and we consider it a balanced distance between sufficient search space and allocating discharge stations over non-realistically large distances.

For all runs, we evaluated the KGE distribution as is and additionally compared KGE values as function of upstream catchment area per station. This way we expect to obtain a better picture whether finer spatial resolution has a more marked impact on upstream stations compared to downstream stations. To analyse this, we categorized all stations depending on their catchment area with a minimum catchment area of 400 km² due to the above-described selection criteria. Stations with a catchment area falling in the 25 % quantile were considered upstream stations, those falling in the 75 % quantile downstream stations, and all remaining ones midstream stations. One hypothesis is that a finer model spatial resolution improves especially discharge simulations in upstream areas due to the refined channel network and thus better representation of upstream processes.

Per station, the change of obtained KGE between two different runs can be compared by computing the KGE skill score (KGE_{ss}) based on the subsequent equation (Towner et al., 2019):

$$KGE_{ss} = \frac{KGE_a - KGE_{ref}}{1 - KGE_{ref}}$$

Here, KGE_a is the KGE of the model run under consideration, while KGE_{ref} is the KGE of the reference run for which we use the 50k_50k run. Positive KGE_{ss} indicates improved skill, whilst a negative score represents a decrease in skill.

Thus far, we focused on monthly discharge results only as it reduces file size and makes the required analyses manageable. Moreover, the runs did use the simpler routing scheme implemented in PCR-GLOBWB, named 'accuTravelTime', which has limitations on accurately simulating discharge since it relies on a characteristic method and fixed flow velocities. For daily discharge simulations, particularly in larger channels, a kinematic or dynamic wave approximation is needed. We did not apply these as it would lead to very large computation times at 1 km resolution under the current PCR-GLOBWB code. Nevertheless, we think it may add to the evaluation if we also assessed how fast model processes, for which a short temporal resolution is crucial, profit from an increased spatial resolution of the model, as argued by Melsen et al. (2016). To that end, we compared KGE values obtained with both daily and monthly output per catchment area category.

2.2.2. Upper soil moisture

For validating the average soil moisture of the upper layer, we compare simulations with remotely sensed ESA-CCI soil moisture data v06.1 (Dorigo et al., 2017; Gruber et al., 2019). The native temporal resolution is daily and the spatial resolution is 0.25 degree (roughly 25km at the Equator). It is noteworthy that the observed data is representative for the upper 5 cm of the soil column whereas simulated upper soil moisture from PCR-GLOBWB is an average of the first 30 cm. It is also due to this difference that applying the KGE across all evaluated variables is not feasible. It should additionally be mentioned that an older version of ESA-CCI soil moisture data is one of the input data for GLEAM evaporation data (see section 2.2.3). Nevertheless, we can still use the ESA-CCI data as indicator for actual soil moisture dynamics. By computing the spatial mean per water province per time step for both observation and simulation, the resulting timeseries were used to derive the relative root-square-mean-error (RRMSE) per water with the subsequent equation:

Deleted: obtained

Commented [BM(3)]: Daily?

Formatted: Not Highlight

$$RRMSE = \frac{RMSE(obs, sim)}{\sigma(obs)}$$

Here, $RMSE(obs, sim)$ is the root-square-mean-error between observation and simulation timeseries, and $\sigma(obs)$ the standard deviation of the observation timeseries.

2.2.3. Total evaporation

5 Evaporation makes up a significant factor in in the terrestrial water cycle as well as water balance, strongly determining water availability. Accurate simulation of evaporation is therefore paramount. Unfortunately, there is only little independent observation data available with sufficient temporal and spatial variation and extent.

10 Therefore, to benchmark simulated total evaporation per water province, we used data from the remote sensing-based dataset GLEAM version 3.5a (Global Land Evaporation Amsterdam Model; Gonzalez Miralles et al., (2011), Martens et al., (2017)), covering the period from 1980 to 2020. GLEAM v3.5a has a native monthly temporal resolution and a spatial resolution of 0.25 degree (~25 km). Since the algorithms implemented in GLEAM aim much more on correctly simulated correct evaporation than PCR-GLOBWB, and because GLEAM employs different (remotely sensed) input data sets, the choice to use a partly model-based benchmark is defensible. Similar as for upper soil moisture evaluation, the RRMSE was determined per water province.

15 2.2.4. Terrestrial water storage anomaly

By validating model total water storage against remotely sensed terrestrial water storage, it is possible to evaluate the model's storage dynamics. As such, it provides a more holistic validation including the entire hydrological system state.

20 Here, simulated terrestrial water storage anomaly was validated against JPL-Tellus GRACE/GRACE-FO (Kornfeld et al., 2019) data for the period 2002 until 2019. While the native spatial resolution of the data is at 3 degrees, the data used here is at 0.5 degree. Again, monthly averages were computed for both observation and simulations to obtain the RRMSE per water province.

3. Results

3.1. Simulated discharge

25 We see that simulated discharge, as expressed by the KGE value averaged over all GRDC stations per water province, improves greatly with finer model spatial resolution (Figure 1, Figure 2; Table 2). While the 50k_50k run yields a negative median KGE values, this picture improves for finer resolutions with the 1k_1k and 1k_10k runs comfortably exceeding the accuracy threshold of -0.41 as defined by Knoben et al. (2019). Higher skill with finer resolution is in line with previous research (Altenau et al., 2017), although this is should not be expected to be the case for all stations due to locality effects in the scaling process (Aerts et al., 2021). As in our case only around 7 % of all stations do not show an improvement at all but roughly 70 % of the stations receive their highest KGE values for the 1k_1k run (Figure B1), results nevertheless indicate a robust relation between model resolution and accuracy of simulated discharge.

30

Deleted: and discussion

Deleted: Figure 1, Figure 2; Table 3).

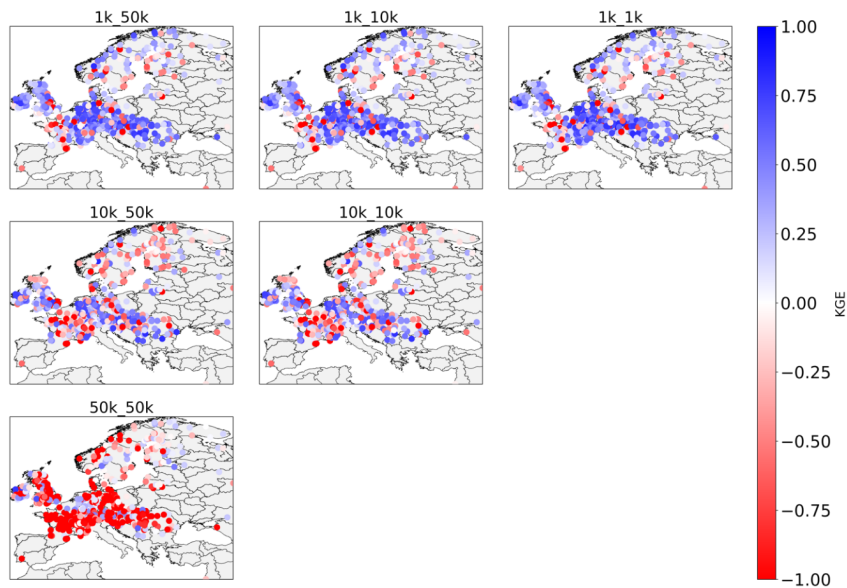


Figure 1: KGE values of all selected GRDC stations in Europe.

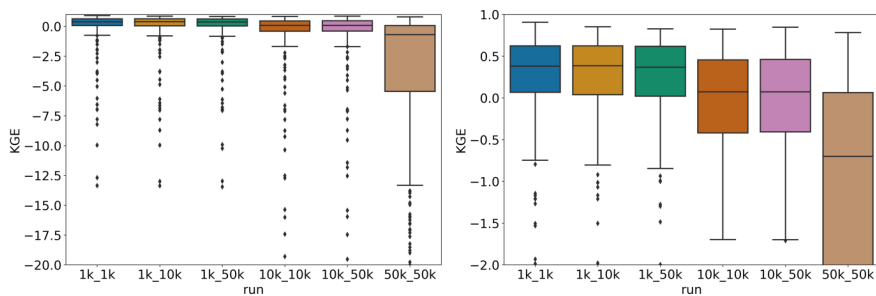


Figure 2: Boxplot of KGE values obtained for all runs; right zoomed in to smaller value range.

5 Results furthermore indicate that the impact of forcing spatial resolution is present but limited to the 1k runs, and even there only the distribution of KGE values contains slightly higher values (as expressed by the whisker extents in Figure 2) while mean KGE values are close to identical. Overall, results suggest that model resolution is a more important determinant of the accuracy of simulated discharge. Due to the minor differences found across forcing resolutions, the subsequent discharge analyses focus on results from the 1k_1k, 10k_10k, and 50k_50k runs.

Deleted: Figure 2

10 When analysing results per catchment area category, they also show that KGE values increase when moving to 1 km hyper-resolution, with the magnitude of improvement depending on upstream area (Figure 3). In line with previous results and our hypothesis, employing finer resolutions than the reference 50 km has the most pronounced effect at upstream locations where the 50 km model is seemingly less capable of reproducing observed discharge. For midstream and downstream stations, KGE_{ss} values show the greatest improvement for the 1k_1k run, and hence a clear beneficial effect of hyper-resolution hydrological modelling. In fact, simulated discharge at 1 km improves over either 10 km or 50 km or both at around 93 % of the GRDC stations assessed (see Figure B1). In

Deleted: Figure 3).

Deleted: Figure B1).

addition to our hypothesis that hyper-resolution is beneficial in upstream areas, these results suggest that a better representation of smaller streams contributes to more accurate discharge simulations at large.

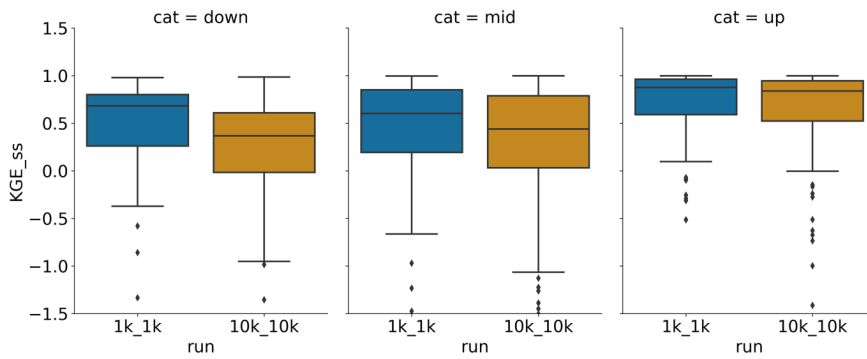


Figure 3: Boxplots of obtained KGE_{ss} values for all stations categorized as downstream, midstream, and upstream for selected runs.

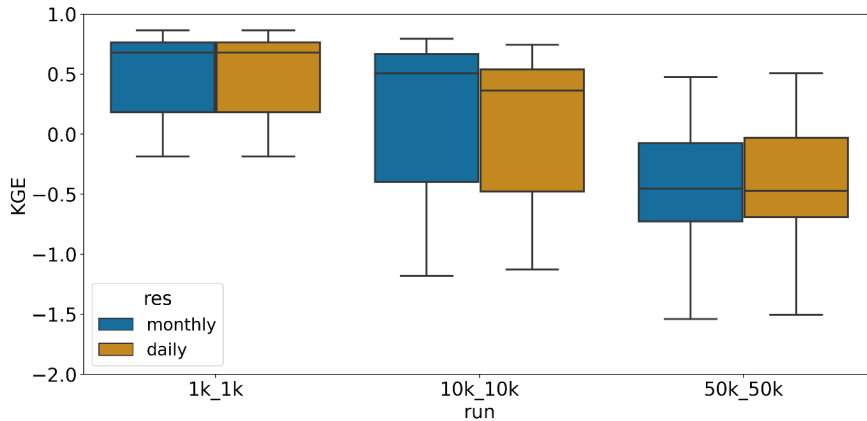


Figure 4: Comparison between KGE distribution presented as boxplots for different spatial resolution and temporal resolution of discharge output.

Another hypothesis we tested is whether the accuracy of fast processes simulated at daily resolution, such as discharge generation, improve compared to longer aggregation periods, for example months, with finer spatial resolution. This is in line with Melsen et al. (2016) who argues that 'the calibration and validation time interval should keep pace with the increase in spatial resolution'. Based on Figure 4, this hypothesis cannot be confirmed for the PCR-GLOBWB model. We do, however, want to stress that these results do not mean that moving to hyper-resolution does not yield improvements for shorter temporal intervals at all. It is highly likely that the simplistic routing schematization used in this experiment limits the improvement of daily discharge dynamics. Using more advanced routing schemes was not feasible due to the resulting high computation demand. It can thus be assumed that the here presented daily discharge estimates do not fully represent the potential benefits which could be achieved with hydrological simulations at hyper-resolution.

Deleted: Figure 4

3.2. Upper soil moisture

To assess the model skill in reproducing upper soil moisture, we analysed RRMSE values obtained per water province (Figure 5). Overall, we find areas with consistently low and high RRMSE values. Particularly the UK, Ireland, southern Sweden and Norway, the Rhine-Meuse delta, and a larger area centred around Austria have high RRMSE values. Large parts of Spain, Portugal, and Finland as well as northern Sweden show overall good model performance as indicated by low RRMSE values.

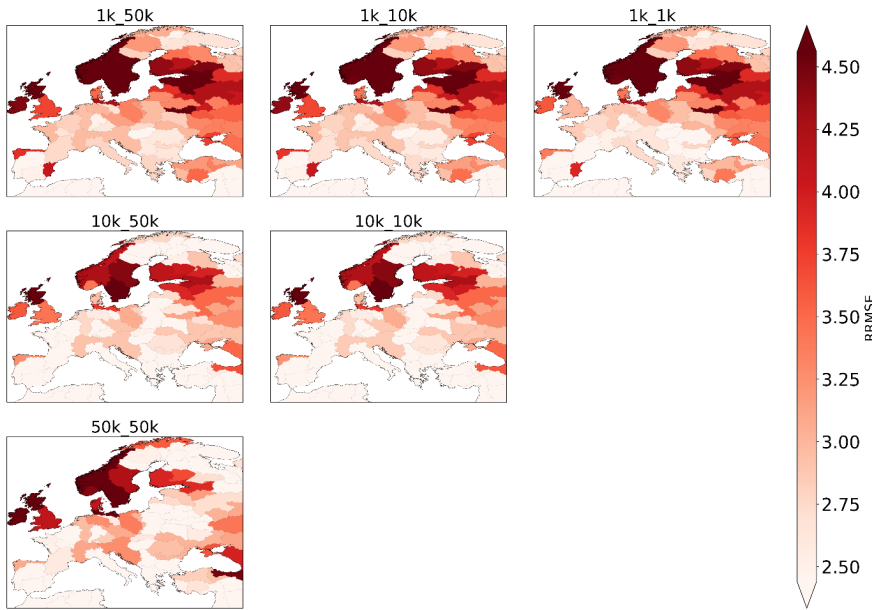


Figure 5: Relative Root Mean Square Error (RRMSE) values computed per water province based on simulated upper soil moisture and observations from ESA-CCI.

Comparing RRMSE values across both model resolutions (Figure 6A and Table 2) reveals that the 10k runs, when benchmarked against the 1k run, produce overall lower RRMSE values and are thus more accurate, although differences between median values are overall small especially between the 1k_1k and 10k_10k runs. It is in line with our expectations that the 50k run has the highest RRMSE values. Figure 6B and Figure 6C compare RRMSE values across forcing resolutions, indicating that employing coarser forcing resolution decreases model accuracy for the 1k runs while not having significant impact on the 10k run (see also Table 2) – a similar pattern to that found in the discharge evaluation.

It should be noted, however, that observed and simulated soil moisture values are based on different soil depths, which may have a not further quantifiable impact on analysis results. The fact that a similar pattern is found when assessing timeseries variability as expressed by the coefficient of determination R^2 indicates that the relation between observation and simulations is well-represented also when assessing RRMSE values (Figure B2).

Deleted: Figure 5).

Deleted: Figure 6

Deleted: Figure 6B and Figure 6

Deleted: Table 3

Deleted: Figure B2

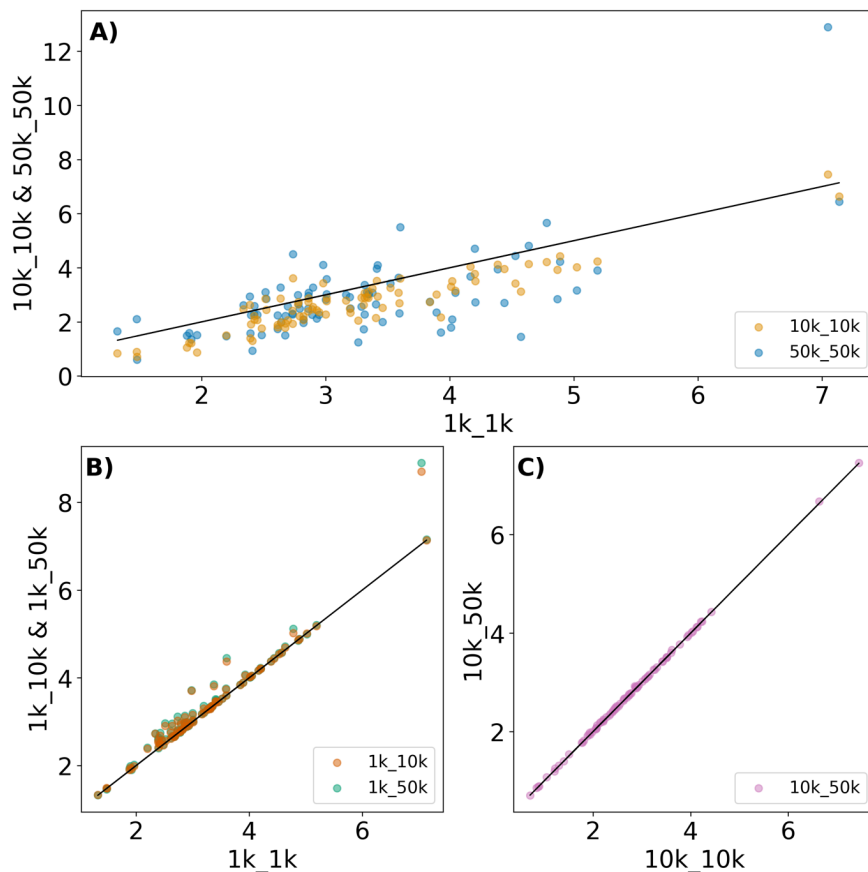


Figure 6: Scatterplot of RRMSE values obtained in evaluation of simulated upper soil moisture with ESA-CCI data for: A) comparing different model resolutions; B) comparing different forcing resolutions for 1k runs; C) comparing different forcing resolutions for 10k runs.

5 Ranking the accuracy of the runs by their mean RRMSE value, we see that the 10k runs perform best, followed by the 1k_1k run (Table 2). The fact that the 10k_10k runs clearly outperform the 1k_10k and 1k_50k runs indicates that a too coarse forcing resolution can eradicate potential benefits of finer model resolution, and that employing a coarser model resolution with a (relatively) fine forcing resolution may lead to similar accuracy.

3.3. Total evaporation

10 Results indicate that model accuracy is lowest for the 1k runs, followed by the 50k run (Figure 7, Figure B3A, Table 2). The 10k runs show overall best performance in resembling evaporation estimates from GLEAM. We furthermore find that RRMSE values are smaller and range between 0.22 and 1.78, indicating overall better agreement between simulation and observation than for surface soil moisture. The deterioration of model accuracy at 1 km scale is visible over the entire European continent except for Great Britain where we see improvement
 15 when moving towards 1 km model resolution.

Deleted: Table 3).

Deleted: Figure 7, Figure B3A; Table 3).

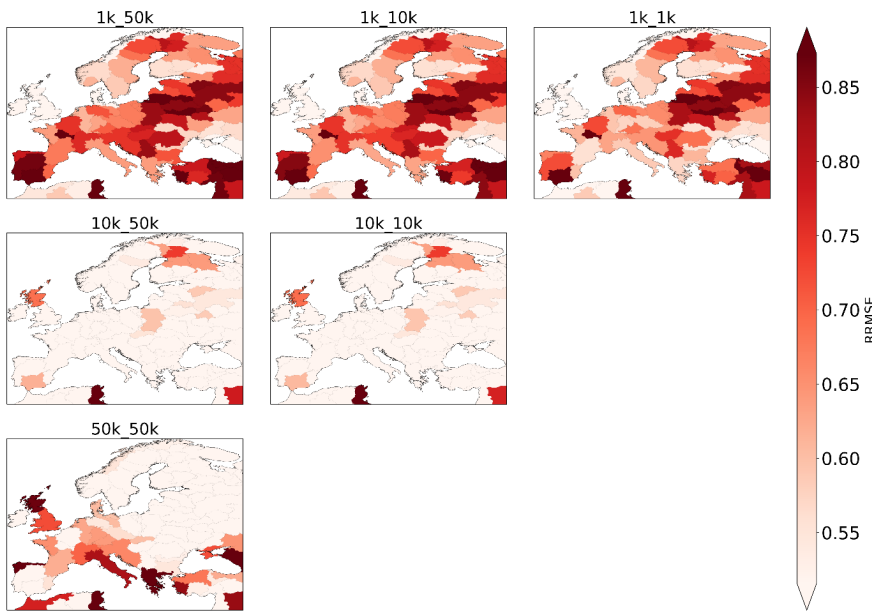


Figure 7: RRMSE values computed per water province based on simulated total evaporation and evaporation data from GLEAM.

5 in line with the soil moisture evaluation, employing a coarser forcing resolution increases RRMSE values for the 1k runs, and hence decreases model accuracy, but has no impact on the 10k runs (Figure B3B, Figure B3C; Table 2).

3.4. Terrestrial water storage anomalies

10 As with all previous evaluations, evaluating terrestrial water storage (TWS) anomalies indicates that coarser forcing resolutions yield reduced model accuracy, but in this case the impact is smaller than for previously assessed variables (Figure B4B, Figure B4C; Table 2).

15 Figure 8 shows that there are distinct hotspots (Scandinavia, the UK and Ireland, Italy, and water provinces along the Atlantic and Mediterranean coast) where model accuracy is limited, regardless the model resolution or forcing resolution employed. Furthermore, the same pattern occurs as with total evaporation, namely that overall RMSE values are lowest for model resolutions coarser than 1 km, in that case the 50k run (Figure B4A; Table 2). These findings, again, may be related to the fact that the large original footprint of the GRACE data of 3 arc-min or roughly 300 km cell length, despite downscaling it to 0.5 degree, favours coarser resolutions. In fact, the match in spatial resolution may be explaining some of the good performance of the 50 km run. Consequently, the (potentially) added value of finer model resolutions may not be captured when using GRACE data for evaluation.

Deleted: The reason for this deviation from the positive performance changes observed for discharge simulations is currently unknown. We see three possible reasons. First, the runs with 1 km model resolution are not able to reproduce evaporation dynamics, possibly as a result of epistemic uncertainty surrounding soil and vegetation parameterization at that spatial scale. Second, GLEAM, the dataset employed for model evaluation, tends to be favourable for coarser model resolutions, possibly as result of its own coarse spatial resolution of 0.25 degree which might lead to a favourable comparison at coarser spatial resolutions. Or third, that the algorithms of the GLEAM model at 0.25-degree resolution cannot fully, as carefully developed as they are, represent local values. ¶
What is consistent

Deleted: however, is that

Deleted: Figure B3B, Figure B3C; Table 3).

Commented [BM(4): Could this be the result of the native resolution of the evap measurements, which is most similar to the 10 km simulations? It should not matter because all are upscaled to water province means, but→ nevertheless?

Commented [MOU5R4]: Yes, that's possible, as discussed in the discussion section

Deleted: Figure B4

Deleted: Figure B4

Field Code Changed

Deleted: Figure 8

Deleted: Table 3).

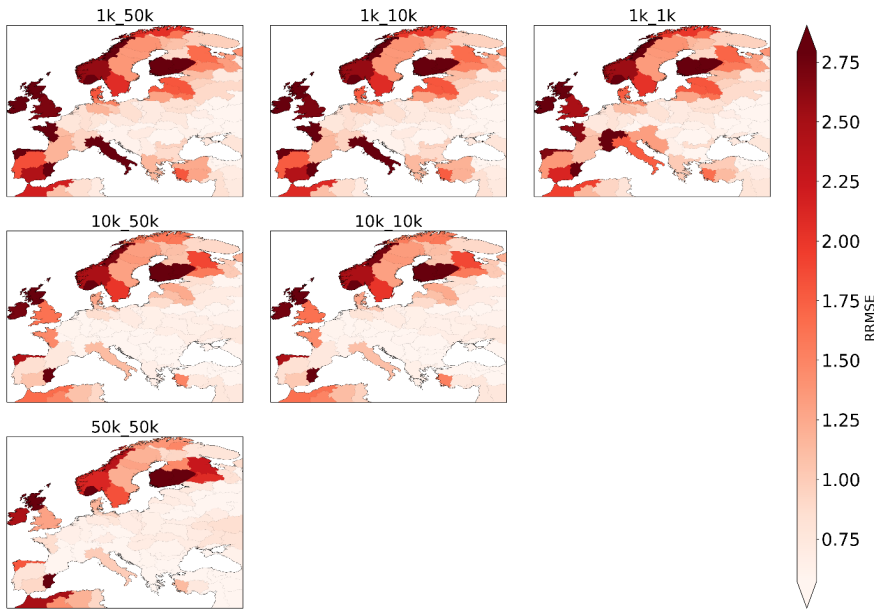


Figure 8: RRMSE values computed per water province based on simulated total water storage anomalies and terrestrial water storage anomalies from GRACE/GRACE-FO.

Table 2: Overview of median evaluation metrics per run per evaluated variable except for discharge.

dataset	metric	1k 1k	1k 10k	1k 50k	10k 10k	10k 50k	50k 50k
GRDC	median KGE	0.38	0.38	0.37	0.07	0.07	-0.70
ESA-CCI	median RRMSE	3.00	3.13	3.16	2.67	2.68	2.63
	median R2	0.30	0.30	0.30	0.32	0.32	0.28
GLEAM	median RRMSE	0.66	0.70	0.70	0.40	0.40	0.46
	median R2	0.97	0.97	0.97	0.97	0.97	0.98
GRACE	median RRMSE	1.00	0.99	1.00	0.75	0.75	0.72
	median R2	0.71	0.71	0.71	0.71	0.71	0.66

Moved (insertion) [2]

4. Discussion

4.1. Model parameterization

In the debate of “hyper-resolution”, the role of model parameterization is a major topic. Here, we did not attempt to improve model parameterization or replace parameterized processes with empirical scaling relations when moving from coarse to fine resolution. This allows us to make inferences about the importance of scale-consistent model parameterization and where using the thus far default approach (simple parameter upscaling and changing forcing resolutions) may reach its limits.

As an example, we assessed in more detail the parameterization for the groundwater response times, which has a major impact on groundwater storage dynamics. Our hypothesis is that it needs to be adjusted for finer spatial resolutions as it does not (yet) correctly scale with the underlying drainage network, and therefore results in the lower accuracy when evaluating TWS anomalies of the 1km runs (section 3.4). Consequently, model response, particularly with respect to regional groundwater dynamics, may be too slow at model resolutions finer than the thus far default 10 km resolution, and hence the groundwater response is out-of-sync with observations. A lower

Deleted: Another possibility is that

Deleted: (the ‘j-parameter’ in PCR-GLOBWB),

Deleted: ,

Deleted: .

Deleted: thus

correlation (expressed here as the coefficient of determination R^2) may thus result in high RRMSE values. To further analyse this, we categorized each water province according to its R^2 and RRMSE values (Figure 9). Indeed, results suggest that R^2 is an overall good predictor of RRMSE: water provinces with a high R^2 tend to have low RRMSE values and vice versa, accounting for in total 66 % to 68 % of all provinces, across all runs. More importantly is here that for the 1 km run we find the greatest median RRMSE value. Consequently, issues related to correct scaling of the recession parameter may indeed contribute to the not-improvement at finer model resolutions.

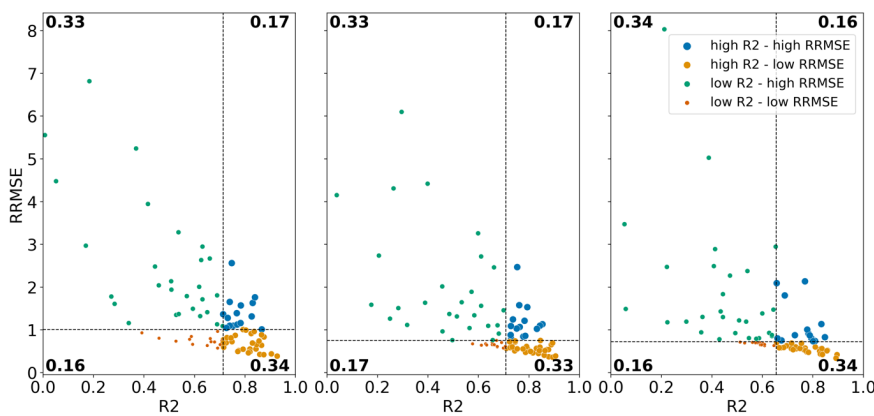


Figure 9: Plot of R^2 and RRMSE values per water province, categorized in four quartiles based on their median R^2 and RRMSE values, respectively, for 1k_1k, 10k_10k, and 50k_50k runs (from left to right). Values in corners of quartiles represent the fraction of data points in the respective quartiles.

Another example how the question whether using a parameter or equation can affect model accuracy is the accumulation of water storage over time, particularly in snow-dominated areas where the downscaled temperature at 1 km is mostly below the freezing point. Again, such accumulation decreases model accuracy of simulated TWS anomalies. In these areas, PCR-GLOBWB does not yet contain enough physical processes to re-distribute snow to other 1 km cells (e.g., glaciers or avalanches). Indeed, correcting for snow cover of the 1k_1k run had a positive effect when evaluating TWS anomalies (Table 3) for two water provinces (not surprisingly located in and around the Alps, see Figure B5), strongly suggesting that the current approach to calculate snow cover and changes thereof may locally limit model accuracy for hyper-resolution runs.

Table 3: RRMSE values for two selected water provinces without and with correction for snow cover when evaluating simulated TWS anomalies.

	RRMSE (w/o correction)	RRMSE (w correction)	RRMSE reduction
ID 45	1.318	0.597	45 %
ID 179	5.553	0.862	84 %

4.2. Scale commensurability of simulated and observed data

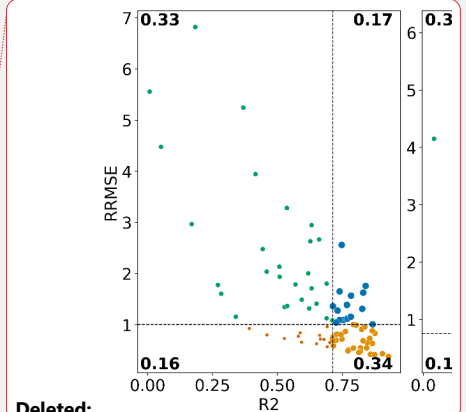
Scale commensurability is an important aspect when comparing simulated and observed data, when (in)validating a model (Beven et al., 2022). In line with previous research (Gleeson et al., 2021) commensurability errors are reduced for increasingly finer spatial resolutions, which translates to more accurate river networks and in turn less spatial aggregation, when evaluating simulated discharge.

For most of the other evaluated variables, however, results tend to be favourable for coarser model resolutions. A clear answer what causes these ambiguous results is currently, however, not possible as epistemic uncertainty is large: either the observations, the model schematizations derived at coarser resolutions from the default 1 km

Deleted: value (Figure 9).

Deleted: .

Formatted: English (US)



Deleted:

Deleted: according to

Deleted: For additional underpinning of the drivers of limited model skill to reproduce TWS anomalies, we selected two provinces (Figure 10; for their locations see Figure B5): one from the 'low R^2 – high RRMSE' category (ID: 204; R^2 : 0.184, RRMSE: 3.515) and one from the 'high R^2 – low RRMSE' category (ID: 224; R^2 : 0.928, RRMSE: 0.382). This figure not only confirms the assumption that a high R^2 can explain high RRMSE values, and as such shows that the 1 km version of PCR-GLOBWB can accurately reproduce dynamics of TWS anomalies for a third of the water provinces (Figure 9). It, however, also points to another issue at 1 km model resolution, namely a faster decline of TWS at 1 km resolution. ¶

Deleted: In these instances

Deleted: Table 2

Deleted: Figure B5

Deleted: processing of

Deleted: locally

Commented [BM(6)]: I calculate 85%

Commented [NW7R6]: I calculate 84.4%

Commented [MOU8R6]: Interesting, no idea what happend here

Deleted: 16 %

Moved (insertion) [3]

Formatted: Not Highlight

model data, the mismatch in spatial resolutions between observations and model, or all of them may lead to mixed results and additional efforts need to be taken to reduce this uncertainty.

Currently, the difference between the finest resolution of the model (1 km) and of observational datasets that cover the entire European domain and have a sufficiently long record (25 to 50 km) is undoubtedly great. However, as only recent satellite missions, such as the ESA Sentinel mission or commercially-driven ones, can produce data at the (sub)kilometre-scale, it will still take some time until the observed period is sufficiently long for robust long-term model evaluations. For example, surface soil moisture data collected by Sentinel1B started in 2015 only, whereas the here used ESA-CCI data covers the period 1978 to 2020. Similarly, MODIS16A ET data provides sub-kilometre scale evapotranspiration data starting in 2001. Even though this is already a longer track record, it would mean disregarding 20 years of simulations which may be too short for establishing a baseline understanding of the effect of hyper-resolution.

4.3. Computing and data storage demand

Another important aspect of hyper-resolution hydrological modelling is the computational demand as well as the numerical scheme used. Table 4 shows computational demands for different model resolutions using the Dutch super-computer Snellius. Without parallelization, the wall clock time for a 10 km run was about 36 hours. This entails that the 1 km model, having the size of about 100 times the 10 km model, would result in a wall clock time of 3,600 hours (~150 days). This wall clock time is clearly not viable and therefore 1 km model was run in parallel for 45 chunks.

Table 4: Overview of indicators for computational demand of the runs at different model resolutions. The file sizes refer to output for one variable.

	1k	10k	50k
Run time			
- Without parallelization	3,600 h	36 h	9h
- With parallelization	204 h	not parallelized	
File size monthly data	25.000 MB	500 MB	15 MB
File size daily data	750.000 MB	15.000 MB	450 MB

As the underlying numerical scheme of PCR-GLOBWB has not been changed for computationally more demanding hyper-resolution simulations, it is clearly sub-par. Besides using ever more powerful high-performance computers (HPCs), additional efforts should be taken to improve model parallelization capacities as implemented in comparable models (Kollet and Maxwell, 2006; Kollet et al., 2010; Bierkens et al., 2015). Evidently, the challenge of hyper-resolution hydrological modelling is not only one of data and parameters, but also one of model design which needs to be following most recent software and hardware developments, for instance distributed memory parallel modelling (Verkaik et al., 2021, 2022), asynchronous many-tasks (de Jong et al., 2022, 2021) or running the simulations on GPUs (Shaw et al., 2021) or XPU's in general.

Once shorter run times are achieved, it can have direct positive effects on model results too, especially discharge. With the thus far default model design, we had to employ the 'accuTravelTime' routing scheme, the largest simplification of the shallow water equations. This renders particularly daily discharge simulations potentially inaccurate and does not make full use of a hyper-resolution river network as relevant physical processes are not included. Once a speed up of the model is realized by considering one of the above-mentioned options, it could be feasible to employ more sophisticated versions of the shallow water equations. But also for other model variables, an improved numerical scheme will be crucial when processes replace parameterization at 1 km resolution.

5. Conclusion and recommendations

In this study, we assessed challenges and opportunities of refining both model and forcing spatial resolution from 50 km to 10 km to hyper-resolution 1 km, aiming to increase our understanding of scale dependencies of both the model and the meteorological input. Our work shows that too coarse forcing resolution can eradicate benefits of

Formatted: Not Highlight

Moved (insertion) [4]

Moved up [2]: Table 3: Overview of median evaluation metrics per run per evaluated variable except for discharge. [1] dataset

Deleted: Thus far, we focused on model accuracy, but another

Formatted: Not Highlight

Deleted: Table 4

Deleted: Here, the run times and disk storages required for different resolutions were compared for performing the European continental-extent runs over three decades (1981-2019). [1]

Deleted: Hence, to speed up computation, the 1 km model was divided into 45 groups of river basins such that it could be run as 45 individual runs (masks). With this simple parallelization technique, the wall clock time for the 1 km model was reduced to about 204 hours (~8.5 days), which was limited by the largest river mask covering the Danube River basin and its neighbouring smaller river basins

Deleted: The indicators shown in Table 4 show that performing hyper-resolution simulations is still pushing the boundaries of what is possible, although it is likely that better much better performance is possible by replacing the simple parallelization used here with ... [2]

Moved (insertion) [5]

Formatted: English (US)

Formatted: English (US)

Field Code Changed

Formatted: English (US), Not Highlight

Formatted: Not Highlight

Formatted: Not Highlight

Formatted: Not Highlight

Formatted: Not Highlight

Deleted: Despite these advances, access to high- ... [3]

Formatted: Not Highlight

Formatted: Not Highlight

Formatted: Not Highlight

Deleted: how

Deleted: influences

Deleted: accuracy. To that end, model grids at th ... [4]

Deleted: fluxes were evaluated against observati ... [5]

Deleted: influence of finer model resolution is le ... [6]

model hyper-resolution. Hence, if forcing is only available at coarse spatial resolution, applying a hyper-resolution model will not provide any performance gain and only increase computational demand. Furthermore, results show that model resolution is greatly defining overall output accuracy: if model skill at a given model resolution and coarse forcing resolution is already low (or high), employing finer forcing resolution will only yield limited improvement. Consequently, future work should be aimed at advancing both model and forcing data. For the latter, the scale gap between currently achievable model resolution and available meteorological data sets needs to be closed.

Even though the here presented hyper-resolution model is not just the same old model with more grid cells but populated with as much high-resolution parameter data as possible, there is still room for model improvement. Currently, the used parameterization design is not fully scalable from the current default of 10 km to 1 km. Clearly, some parameters or sub-grid approaches should be replaced by actual data at when moving to hyper-resolution. As exemplified in section 4.1, model accuracy at 1km spatial resolution may be lower than necessary due to an unfit model parameterization. Considering the growing number of openly available datasets it is needed to carefully review model parameters and their values currently used. In some instances, it may be better to include additional physical processes to capture the immense natural heterogeneity which can be resembled at the 1 km scale (Clark et al., 2017; Beven and Cloke, 2012), while making sure that including these processes and fine-scale data result in consistent parameterizations across scales (Samaniego et al., 2010). It is only when model parameterization is improved and more processes are implemented at hyper-resolution, that the full potential of a hyper-resolution model grid can be employed. Then, we expect that model realism will improve and epistemic uncertainty will decrease, leading to overall improved accuracy.

While finer model resolution has a clear positive effect on simulated discharge, answering the question of scale commensurability when employing long-term observational datasets with coarse spatial resolutions remains challenging (see section 4.2). Following up the baseline study presented here, a second step in (in)validating the simulated results is recommended in which finer-resolution observational data should be employed to reduce scale-related commensurability uncertainties (Beven, 2018, 2016). The availability of 1 km model output over large extents now offers a great opportunity to make full use of the benefit of these novel data. In that context, the need to use water provinces to link across spatial resolutions could be lifted when merely assessing hyper-resolution model output, allowing the model evaluation to be performed at the individual grid scale.

As discussed in section 4.3, performing hyper-resolution simulations is still pushing the boundaries of what is currently possible. Despite advances made in both software and hardware acceleration, access to high-performance computers with sufficient CPU, memory, and disk space remains vital for hyper-resolution simulations at the continental-scale, let alone for global application. Democratizing this access will therefore be crucial to enable researchers world-wide to advance hyper-resolution hydrological modelling. Additionally, the numerical scheme of any model attempting continental-scale hyper-resolution simulations needs to be on-par with the task at hand. This is not to say that all models need to be refactored entirely, but undoubtedly optimized code and some form of advanced cyberinfrastructure (Condon et al., 2021) needs to be in place – possibly supported by research software engineers (Hut et al., 2017) – to deal with the high storage and computational demand of not only running the simulations but also storing both input and output data as well as analysing results.

All in all, the here presented results should not be considered the final outcomes of a development towards global hyper-resolution hydrological modelling. For one, they are rather a first effort to map both opportunities and challenges of continuous simulations at 1 km resolution over large extents, with lessons learned for iterative open-ended model evaluation and subsequent improvement of model parameterization and configuration (Gleeson et al., 2021; Bierkens et al., 2015). Since the study here is at the continental scale - yet with global model configurations and global data sets -, the findings made should be confirmed (or disregarded) in a global-scale study, ideally using high-resolution observation data sets for benchmarking. Now that a modelling and evaluation workflow is established, the threshold for performing such a study is lowered. Since most hyper-resolution studies are done over data-rich regions, it will be revealing to see how hyper-resolution models perform over data-scarce areas. As such, the results here should be seen as first steps in the realm of hyper-resolution with many more to follow.

Deleted: However

Deleted: also

Deleted: driving

Deleted: already

Deleted: While for some simulated discharge moving to hyper-resolution model resolution shows an improved accuracy, such improvement is not visible for internal state variables (surface soil moisture) or even show an opposite trend (evaporation, terrestrial water storage anomaly).

Moved up [3]: A clear answer what causes these ambiguous results is currently, however, not possible as epistemic uncertainty is large: either the observations, the model schematizations derived at coarser resolutions from the default 1 km model data, the mismatch in spatial resolutions between observations and model, or all of them may lead to mixed results and additional efforts need to be taken to reduce this uncertainty.

Moved up [4]: For example, surface soil moisture data collected by Sentinel1B started in 2015 only, whereas the here used ESA-CCI data covers the period 1978 to 2020.

Deleted: As this study is at the forefront of hyper-resolution modelling over Europe, it is not yet possible to benchmark our results against output from comparable models to gain additional insights. Once 1 km output from more models is available, the here presented results should be revisited and put into perspective.¶

Deleted: Similarly, MODIS16A ET data provide ... [7]

Formatted: Not Highlight

Formatted: Not Highlight

Moved up [5]: parallelization capacities as

Deleted: Additionally, accelerating the numerical ... [9]

Formatted: English (US)

Formatted: English (US)

Formatted: English (US)

Formatted: Not Highlight

Formatted: Not Highlight

Formatted: Not Highlight

Deleted: Shorter run times can have direct posi ... [10]

Formatted: Not Highlight

Deleted: greatly

Formatted: Not Highlight

Deleted: interesting

Formatted: Not Highlight

Despite the currently limited availability of observation dataset at matching spatial resolution and the still very demanding computations, we share the positive outlook of O'Neill et al. (2021) and are convinced that on-going data collection efforts, advanced satellite missions, and ever-powerful computers will eventually result in hyper-resolution becoming the default in the foreseeable future, and in turn providing globally continuous yet locally relevant results.

5

Data and code availability. Model output was evaluated using the 'perglobwb_utils' package (Hoch, 2021). As the original model output requires a lot of disk space, only the output from the evaluation step is provided under <https://doi.org/10.5281/zenodo.6390219>. For the original output, please contact the authors.

Author contributions. JMH, EHS, and MB designed and supervised the experiment. EHS prepared the model data and performed the analyses with critical feedback from all co-authors. JMH developed the code for model analysis and evaluated model output. JMH led the manuscript writing process with contributions from all co-authors.

10

Competing interests. The contact author has declared that neither he nor his co-authors have any competing interests.

Acknowledgements. JHM, EHS, and MB acknowledge funding from the Climate-KIC project "Agriculture Resilient, Inclusive, and Sustainable Enterprise (ARISE)". NW acknowledges funding from NWO 016.Veni.181.049. We furthermore thank SURF (www.surf.nl) for the support in using the National Supercomputer Snellius where all simulations and validation was done. Some pre-processing has been performed on the supercomputer of the Imperial College London.

15

A. Appendices

A1. Appendix A

This part provides some brief description about the PCR-GLOBWB model input used in this study. For more extensive details, we refer to previous PCR-GLOBWB model studies, particularly the ones at 50 km resolution (van Beek et al., 2011; van Beek, 2008; van Beek and Bierkens, 2008) and 10 km resolution (Sutanudjaja et al., 2018) as well as at 1 km resolution (Sutanudjaja et al., 2011).

Meteorological forcing

As the meteorological forcing input, PCR-GLOBWB requires daily spatial fields of precipitation and temperature, as well as reference potential evaporation. For this study, reference potential evaporation is calculated using the Penman-Monteith method following the FAO guidelines (Allen et al., 1998) that requires net radiation, wind speed, and vapor pressure deficit (see van Beek (2008) for details).

For all of the aforementioned required meteorological fields, we downloaded the ERA5-Land dataset (Muñoz-Sabater et al., 2021), which are provided at 6 arc-minute and hourly resolution. We then resampled the ERA5-Land precipitation and temperature variables, to daily spatial fields at 5 arc-minute resolution so that they can be used for our 10 km model runs. We also resampled the required variables for the reference potential evaporation calculation at 5 arc-minute resolution and used it as the reference potential evaporation input of our 10 km model runs.

For our 50 km model run, we upscaled or averaged the 5 arc-minute daily precipitation, temperature, and reference potential evaporation variables to their 30 daily arc-minute fields. For 1 km model runs, we downscaled the daily precipitation and temperature fields from 5 arc-minute to 30 arc-second using the monthly lapse rate fields from Sutanudjaja et al. (2018). We refer to Sutanudjaja et al. (2011) for more details about the downscaling procedure. The downscaled 30 arc-second temperature fields were also used to calculate the reference potential evaporation fields based on the Hamon-method (Hamon, 1963) that requires only daily mean temperature as its input. We then used these Hamon 30 arc-second fields to downscale the 5 arc-minute fields of the Penman-Monteith reference potential evaporation to 30 arc-second resolution.

Land surface: soil, and cover, and topography

For soil parameterization, the maps from SoilGrids250 (Hengl et al., 2017) were used in this study. This is different than previous PCR-GLOBWB studies that used the Digital Soil Map of the World (DSMW; FAO, 2007). An obvious advantage using SoilGrids250 from is its sufficiently fine resolution at 0.002 arc-degree resolution (0.12 arcmin, about 250 m at the equator), while DSMW may not be suitable for model grids finer than 5 arc-minute resolution (see e.g. Batjes, 2012).

The PCR-GLOBWB model cannot directly use the soil information of SoilGrids250, which not only has a finer spatial resolution than 1 km PCR-GLOBWB, but also specifies only some general attributes such as soil texture. Here we transformed these attributes of SoilGrids into soil hydraulic properties, such as water holding capacity, field capacity and wilting point, using the pedotransfer functions from Balland and Arp (2005) and Balland et al. (2008). These pedotransfer functions allow the estimation of bulk density and related soil-hydraulic properties at any given depth, which is required to link the layer information from SoilGrids to the two-layer schematization in PCR-GLOBWB. We derived these soil properties at the spatial resolution of 0.002 arc-degree and subsequently upscaled and resampled them to the various coarser PCR-GLOBWB model resolutions used in this study, i.e. 30 arc-second (~1 km at the equator), 5 arc-minute (~10 km) and 30 arc-minute (~50 km).

For the standard parameterization of the land cover the following data sets were combined: the map of Global Land Cover Characteristics Database (GLCC) version 2.0 (Loveland et al., 2000) with the land cover classification following Olson (1994a, b) and the parameter sets from Hagemann et al. (1999) and Hagemann (2002). For the extent of irrigation areas, the map of Global Food Security-support Analysis Data (GFSAD) version 1.0 (Teluguntla et al., 2016) was used. The GLCC and GFSAD maps are available at 30 arc-second resolution (~1 km). Hence, for 1 km model runs, only one land cover type exists per cell. For the resolutions of 10 km and 50

km, land cover types were divided into four land cover types consisting of tall natural vegetation, short natural vegetation, non-paddy irrigated crops, and paddy irrigated crops (i.e. wet rice). Irrigation land cover types (i.e. paddy and non-paddy), including their crop calendars and growing season lengths, were parameterized based on the data set of MIRCA2000 (Portmann et al., 2010) and the Global Crop Water Model (Siebert and Döll, 2010).
5 Detailed description can be found in the key PCR-GLOBWB model description literature (Sutanudjaja et al., 2011, 2018; van Beek et al., 2011).

For topographical related input, we made use of the state of the art Multi-Error-Removed Improved-Terrain Hydro digital elevation (MERIT Hydro DEM, Yamazaki et al. (2019)) that is available at 3 arc-second resolution (~90 m at the equator). This is different than the previous PCR-GLOBWB studies (Sutanudjaja et al., 2018; van Beek et al., 2011) that used previous generation DEM datasets, such as HydroSHEDS (Lehner et al., 2008) or GTOPO30 (Gesch et al., 1999). The 3 arc-second MERIT Hydro DEM was upscaled to the resolutions 30 arc-second (1 km), 5 arc-minute (10 km) and 30 arc-minute (50 km). Yet, we also used its original 3 arc-second resolution elevation values to obtain several sub-grid variability parameters that influences various schemes in PCR-GLOBWB, such as for runoff-infiltration partitioning, interflow, groundwater recharge and capillary rise, as well as evaporation processes (van Beek, 2008; van Beek and Bierkens, 2008; Hagemann and Gates, 2003; Todini, 1996).
10
15

Groundwater

In PCR-GLOBWB, groundwater discharge (also commonly known as groundwater baseflow) depends on a linear storage-outflow relationship, in which a groundwater recession coefficient field is calculated following the drainage theory of Kraijenhoff Van de Leur (1958) based on the drainage network density and aquifer properties.
20 For the drainage density, we used the estimate from van Beek and Bierkens (2008). The aquifer properties were estimated from the GLobal HYdrogeology MaPS (GLHYMPS) dataset of Gleeson et al. (2014). These datasets are reasonably sufficiently fine for modeling at 1 km resolution and can be upscaled to 10 km resolution and 50 km resolution.

Surface water routing: lakes, reservoirs and drainage/river network

PCR-GLOBWB also includes lakes and reservoirs that are taken from the Global Lakes and Wetlands Database (GLWD) of Lehner and Döll (2004) and from the Global Reservoir and Dam Database (GRanD) of Lehner et al. (2011). Reservoirs are processed as follows: for every resolution, we rasterize GranD shapefiles containing information about reservoir surface areas and capacities. During the rasterization process we need account for many factors, such as reservoir locations to the drainage networks (at different resolutions), number of reservoirs within pixels. If a pixel contains more than one reservoir (which is very likely in coarser resolution), we merged their surface areas and capacities and treated them as one reservoir. Consequently, the overall physical properties of reservoirs should not be overly different when moving from finer to coarser resolutions and thus their impact of flow estimates can be considered to be small.
25
30

For the drainage network maps, we made use of the existing 30 arc-minute and 5 arc-minute maps from Sutanudjaja et al. (2018), and the 30 arc-second one from the HydroSHEDS (Lehner et al., 2008). Note that the MERIT Hydro, which we used as the source of DEM, provides a drainage/river network at 3 arc-second resolution only and, therefore, cannot be used for this study.
35

Formatted: Not Highlight

A2. Appendix B

Appendix B provides additional plots and analyses of model results.

In Figure B1, the improvement of KGE values per stations are mapped. To that end, it was assessed whether the KGE value for the 1k_1k run was higher than for either the 10k_10k run or the 50k_50k run, or higher for both runs, or not. Results indicate that KGE values improve at large, with only around 7 % of the stations showing no improvement at all when refining model resolution.

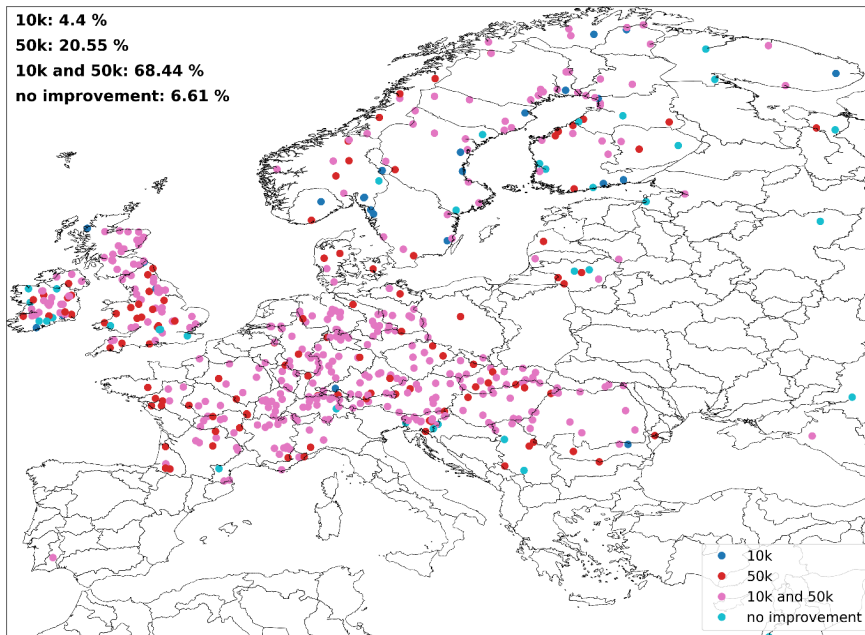


Figure B1: Map of stations where the 1k run showed improvement with respect to only the 10k run, only the 50k run, both runs, or none of the runs.

Deleted: Figure B1

Deleted: improved

Deleted: Figure B2 until Figure B4

Figure B2 until Figure B4 provide scatter plots of R^2 and RRMSE values obtained by evaluating various model variables with observational datasets at the water province level. While panel A compares the impact of different model resolutions (1 km, 10 km, 50 km), panels B and C compare the impact of different forcing resolutions: B) 1 km model resolution with 1 km forcing resolution against 1 km model resolution and 10 km and 50 km forcing resolution, respectively; C) 10 km model resolution with 10 km forcing resolution against 10 km model resolution and 50 km forcing resolution,

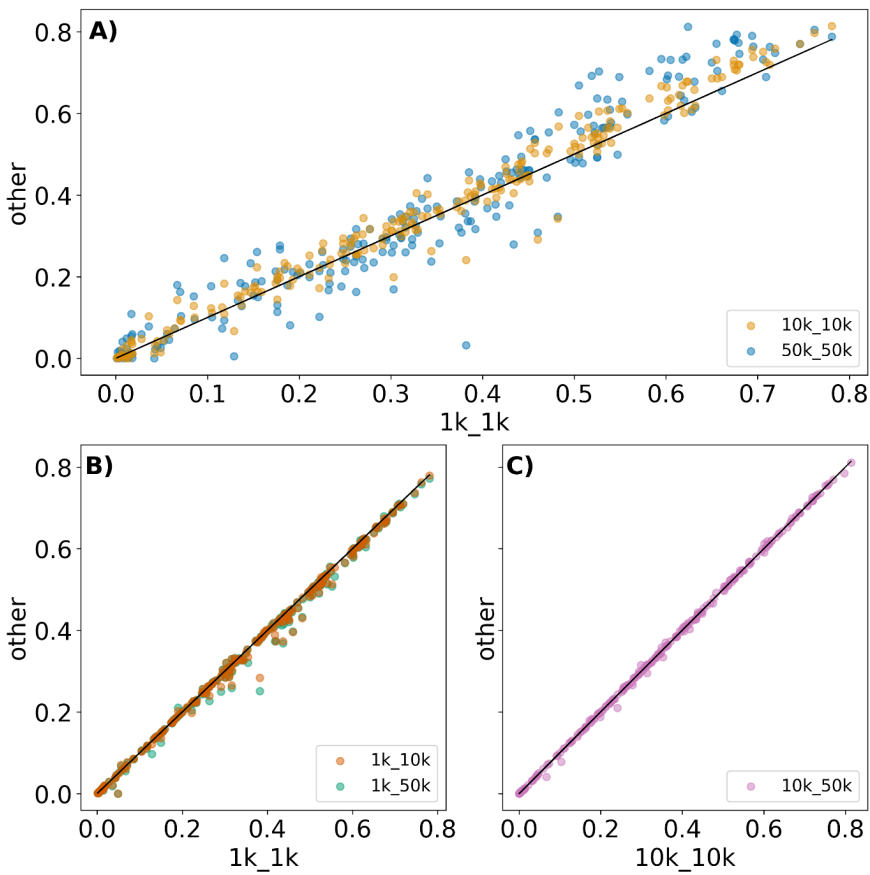


Figure B2: Scatterplot of coefficient of determination (R^2) values obtained in evaluation of simulated upper soil moisture with ESA-CCI data for: A) comparing different model resolutions; B) comparing different forcing resolutions for 1k runs; C) comparing different forcing resolutions for 10k.

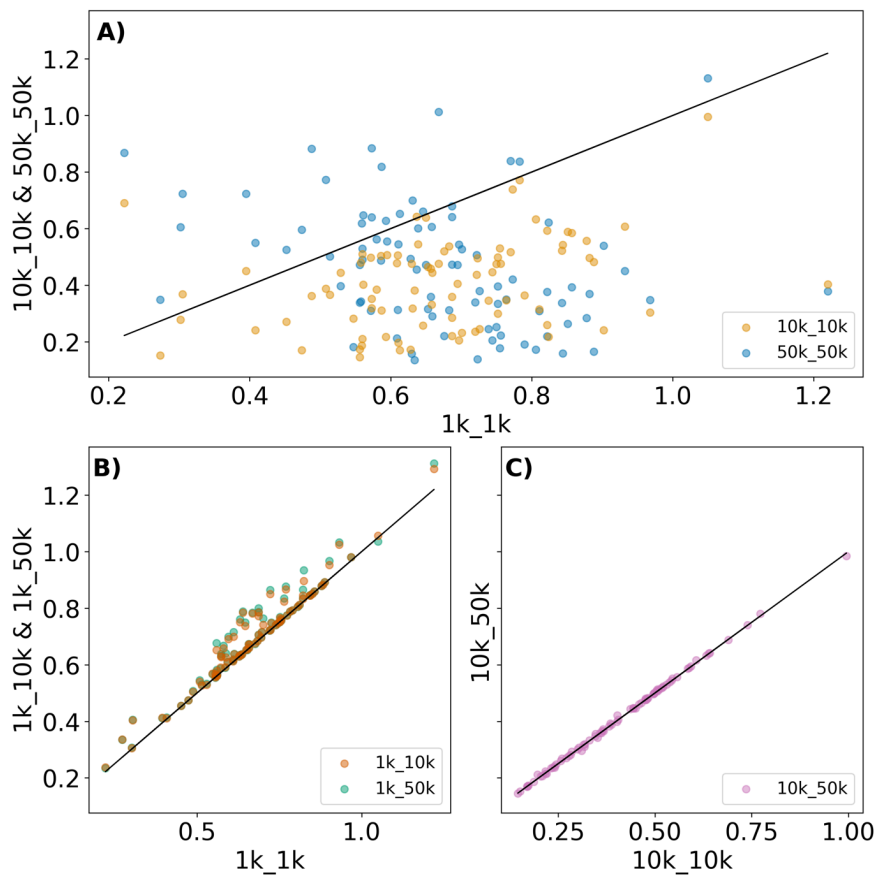


Figure B3: Scatterplot of RRMSE values obtained in evaluation of simulated total evaporation with GLEAM data for: A) comparing different model resolutions; B) comparing different forcing resolutions for 1k runs; C) comparing different forcing resolutions for 10k runs.

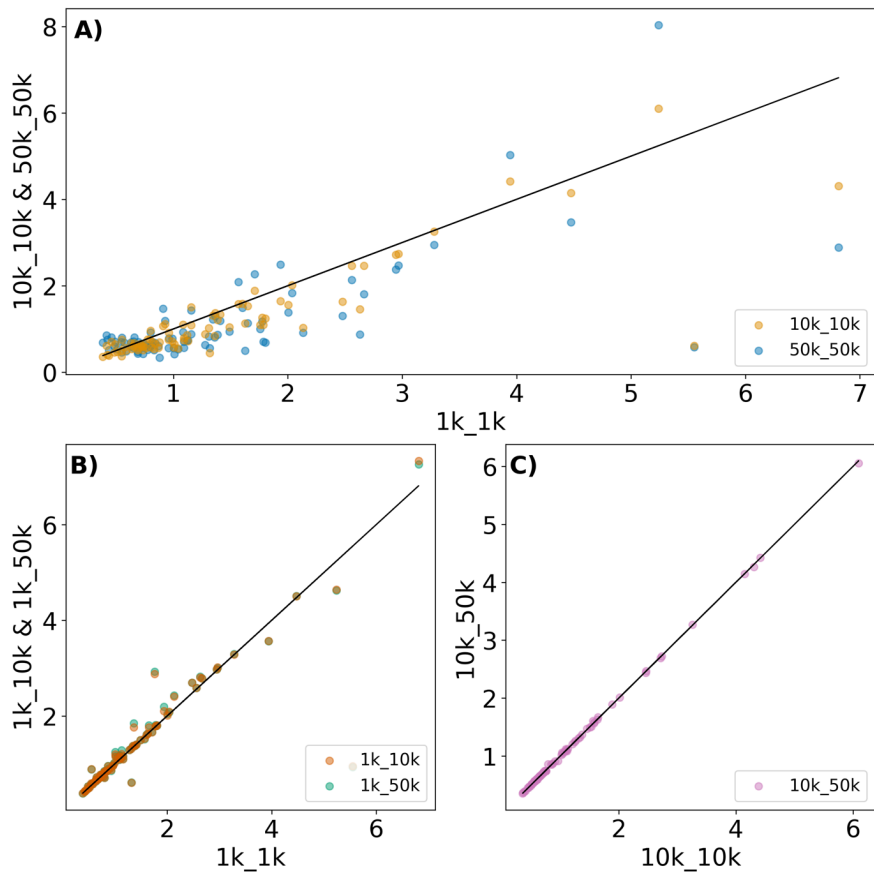


Figure B4: Scatterplot of RRMSE values obtained in evaluation of simulated terrestrial water storage anomaly with GRACE/GRACE-FO data for: A) comparing different model resolutions; B) comparing different forcing resolutions for 1k runs; C) comparing different forcing resolutions for 10k runs.

Figure B5 depicts the categorization of each water province conditional on their R2 and RRMSE values. Four categories were defined: with low and high R2 values and low and high RRMSE values. The median R2 respectively RRMSE value was used to define 'low' and 'high' values. It is shown that there is not really a consistent spatial patterns where which category dominates. Additionally, this figure shows the water provinces with highest R2 and lowest RRMSE and vice versa as well as those provinces for which we analysed the impact of removing snow cover in the evaluation of TWS anomalies.

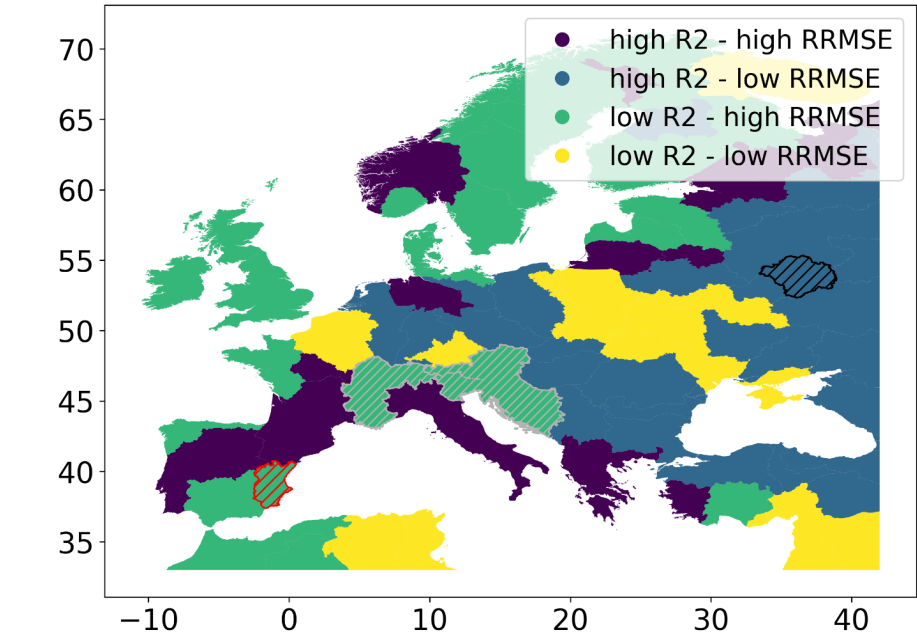


Figure B5: Categorization of water provinces according to their R2 and RRMSE values. Red marker refers to province with lowest R2 value, black marker refers to province with highest R2 value (ID 204 and 224 in ν respectively). Grey marker refers to water provinces for which snow cover correction of TWS anomaly were effective (see section 3.4).

Deleted: Figure B5

Deleted: Figure 10

Field Code Changed

References

- Addor, N., Newman, A. J., Mizukami, N., and Clark, M. P.: The CAMELS data set: catchment attributes and meteorology for large-sample studies, *Hydrol. Earth Syst. Sci.*, 21, 5293–5313, <https://doi.org/10.5194/hess-21-5293-2017>, 2017.
- 5 Aerts, J. P. M., Hut, R. W., van de Giesen, N. C., Drost, N., van Verseveld, W. J., Weerts, A. H., and Hazenberg, P.: Large-sample assessment of spatial scaling effects of the distributed wflow_sbm hydrological model shows that finer spatial resolution does not necessarily lead to better streamflow estimates, *Hydrol. Earth Syst. Sci. Discuss.*, 1–28, <https://doi.org/10.5194/hess-2021-605>, 2021.
- 10 Alfieri, L., Bisselink, B., Dottori, F., Naumann, G., de Roo, A., Salamon, P., Wyser, K., and Feyen, L.: Global projections of river flood risk in a warmer world, *Earths Future*, 5, 171–182, <https://doi.org/10.1002/2016EF000485>, 2017.
- Allen, R. G., Pereira, L. S., Raes, D., and Smith, M.: Crop evaporation—Guidelines for computing crop water requirements—FAO Irrigation and drainage paper 56, Food Agric. Organ. U. N. Rome, 300, 1998.
- 15 Altenau, E. H., Pavelsky, T. M., Bates, P. D., and Neal, J. C.: The effects of spatial resolution and dimensionality on modeling regional-scale hydraulics in a multichannel river, *Water Resour. Res.*, 53, 1683–1701, <https://doi.org/10.1002/2016WR019396>, 2017.
- Balland, V. and Arp, P. A.: Modeling soil thermal conductivities over a wide range of conditions, *J. Environ. Eng. Sci.*, 4, 549–558, <https://doi.org/10.1139/s05-007>, 2005.
- 20 Balland, V., Pollacco, J. A. P., and Arp, P. A.: Modeling soil hydraulic properties for a wide range of soil conditions, *Ecol. Model.*, 219, 300–316, <https://doi.org/10.1016/j.ecolmodel.2008.07.009>, 2008.
- Batjes, N. H.: ISRIC-WISE derived soil properties on a 5 by 5 arc-minutes global grid (ver. 1.2), ISRIC, Wageningen, 2012.
- Beck, H. E., Wood, E. F., McVicar, T. R., Zambrano-Bigiarini, M., Alvarez-Garretón, C., Baez-Villanueva, O. M., Sheffield, J., and Karger, D. N.: Bias Correction of Global High-Resolution Precipitation Climatologies Using Streamflow Observations from 9372 Catchments, *J. Clim.*, 33, 1299–1315, <https://doi.org/10.1175/JCLI-D-19-0332.1>, 2020.
- van Beek, L. P. H.: Forcing PCR-GLOBWB with CRU data, 2008.
- van Beek, L. P. H. and Bierkens, M. F. P.: The Global Hydrological Model PCR-GLOBWB: Conceptualization, Parameterization and Verification, Department of Physical Geography, Utrecht University, Utrecht, 2008.
- 30 van Beek, L. P. H., Wada, Y., and Bierkens, M. F. P.: Global monthly water stress: 1. Water balance and water availability, *Water Resour. Res.*, 47, <https://doi.org/10.1029/2010WR009791>, 2011.
- Beven, K.: Facets of uncertainty: epistemic uncertainty, non-stationarity, likelihood, hypothesis testing, and communication, *Hydrol. Sci. J.*, 61, 1652–1665, <https://doi.org/10.1080/02626667.2015.1031761>, 2016.
- 35 Beven, K., Cloke, H., Pappenberger, F., Lamb, R., and Hunter, N.: Hyperresolution information and hyperresolution ignorance in modelling the hydrology of the land surface, *Sci. China Earth Sci.*, 58, 25–35, <https://doi.org/10.1007/s11430-014-5003-4>, 2015.
- Beven, K., Lane, S., Page, T., Kretzschmar, A., Hankin, B., Smith, P., and Chappell, N.: On (in)validating environmental models. 2. Implementation of a Turing-like test to modelling hydrological processes, *Hydrol. Process.*, 36, e14703, <https://doi.org/10.1002/hyp.14703>, 2022.
- 40 Beven, K. J.: On hypothesis testing in hydrology: Why falsification of models is still a really good idea, *WIREs Water*, 5, e1278, <https://doi.org/10.1002/wat2.1278>, 2018.

Deleted: Bates, P. D., Neal, J., Sampson, C., Smith, A., and Trigg, M.: Chapter 9 - Progress Toward Hyperresolution Models of Global Flood Hazard, in: Risk Modeling for Hazards and Disasters, edited by: Michel, G., Elsevier, 211–232, <https://doi.org/10.1016/B978-0-12-804071-3.00009-4>, 2018.¶

Deleted: ., Cloke, H., Pappenberger, F., Lamb, R.,



Deleted: Hunter, N.: Hyperresolution information and hyperresolution ignorance in modelling the hydrology of the land surface,

Deleted: China Earth Sci., 58, 25–35

Deleted: 1007/s11430-014-5003-4,

- Beven, K. J. and Cloke, H. L.: Comment on “Hyperresolution global land surface modeling: Meeting a grand challenge for monitoring Earth’s terrestrial water” by Eric F. Wood et al., *Water Resour. Res.*, 48, <https://doi.org/10.1029/2011WR010982>, 2012.
- 5 Biemans, H., Hutjes, R. W. A., Kabat, P., Strengers, B. J., Gerten, D., and Rost, S.: Effects of Precipitation Uncertainty on Discharge Calculations for Main River Basins, *J. Hydrometeorol.*, 10, 1011–1025, <https://doi.org/10.1175/2008JHM1067.1>, 2009.
- Bierkens, M. F. P.: Global hydrology 2015: State, trends, and directions: *Global Hydrology 2015*, *Water Resour. Res.*, 51, 4923–4947, <https://doi.org/10.1002/2015WR017173>, 2015.
- 10 Bierkens, M. F. P., Bell, V. A., Burek, P., Chaney, N., Condon, L. E., David, C. H., de Roo, A., Döll, P., Drost, N., Famiglietti, J. S., Flörke, M., Gochis, D. J., Houser, P., Hut, R., Keune, J., Kollet, S., Maxwell, R. M., Reager, J. T., Samaniego, L., Sudicky, E., Sutanudjaja, E. H., van de Giesen, N., Winsemius, H., and Wood, E. F.: Hyper-resolution global hydrological modelling: what is next?: “Everywhere and locally relevant,” *Hydrol. Process.*, 29, 310–320, <https://doi.org/10.1002/hyp.10391>, 2015.
- 15 Chaney, N. W., Metcalfe, P., and Wood, E. F.: HydroBlocks: a field-scale resolving land surface model for application over continental extents, *Hydrol. Process.*, 30, 3543–3559, <https://doi.org/10.1002/hyp.10891>, 2016.
- Clark, M. P., Bierkens, M. F. P., Samaniego, L., Woods, R. A., Uijlenhoet, R., Bennett, K. E., Pauwels, V. R. N., Cai, X., Wood, A. W., and Peters-Lidard, C. D.: The evolution of process-based hydrologic models: historical challenges and the collective quest for physical realism, *Hydrol. Earth Syst. Sci.*, 21, 3427–3440, <https://doi.org/10.5194/hess-21-3427-2017>, 2017.
- 20 Condon, L. E., Kollet, S., Bierkens, M. F. P., Fogg, G. E., Maxwell, R. M., Hill, M. C., Fransen, H.-J. H., Verhoef, A., Van Loon, A. F., Sulis, M., and Abesser, C.: Global Groundwater Modeling and Monitoring: Opportunities and Challenges, *Water Resour. Res.*, 57, e2020WR029500, <https://doi.org/10.1029/2020WR029500>, 2021.
- 25 Dorigo, W., Wagner, W., Albergel, C., Albrecht, F., Balsamo, G., Brocca, L., Chung, D., Ertl, M., Forkel, M., Gruber, A., Haas, E., Hamer, P. D., Hirschi, M., Ikonen, J., de Jeu, R., Kidd, R., Lahoz, W., Liu, Y. Y., Miralles, D., Mistelbauer, T., Nicolai-Shaw, N., Parinussa, R., Pratola, C., Reimer, C., van der Schalie, R., Seneviratne, S. I., Smolander, T., and Lecomte, P.: ESA CCI Soil Moisture for improved Earth system understanding: State-of-the-art and future directions, *Remote Sens. Environ.*, 203, 185–215, <https://doi.org/10.1016/j.rse.2017.07.001>, 2017.
- 30 Dottori, F., Szewczyk, W., Ciscar, J.-C., Zhao, F., Alfieri, L., Hirabayashi, Y., Bianchi, A., Mongelli, I., Frieler, K., Betts, R. A., and Feyen, L.: Increased human and economic losses from river flooding with anthropogenic warming, *Nat. Clim. Change*, <https://doi.org/10.1038/s41558-018-0257-z>, 2018.
- FAO: Digital Soil Map of the World (DSMW), Rome, Italy, 2007.
- Gesch, D. B., Verdin, K. L., and Greenlee, S. K.: New land surface digital elevation model covers the Earth, *Eos Trans. Am. Geophys. Union*, 80, 69–70, <https://doi.org/10.1029/99EO00050>, 1999.
- 35 Gleeson, T., Moosdorf, N., Hartmann, J., and van Beek, L. P. H.: A glimpse beneath earth’s surface: GLobal HYdrogeology MaPS (GLHYMPS) of permeability and porosity, *Geophys. Res. Lett.*, 41, 3891–3898, <https://doi.org/10.1002/2014GL059856>, 2014.
- 40 Gleeson, T., Wagener, T., Döll, P., Zipper, S. C., West, C., Wada, Y., Taylor, R., Scanlon, B., Rosolem, R., Rahman, S., Oshinlaja, N., Maxwell, R., Lo, M.-H., Kim, H., Hill, M., Hartmann, A., Fogg, G., Famiglietti, J. S., Ducharme, A., de Graaf, I., Cuthbert, M., Condon, L., Bresciani, E., and Bierkens, M. F. P.: GMD perspective: The quest to improve the evaluation of groundwater representation in continental- to global-scale models, *Geosci. Model Dev.*, 14, 7545–7571, <https://doi.org/10.5194/gmd-14-7545-2021>, 2021.
- 45 Gonzalez Miralles, D., Holmes, T. R. H., De Jeu, R. A. M., Gash, J. H., Meesters, A., and Dolman, A. J.: Global land-surface evaporation estimated from satellite-based observations, *Hydrol. Earth Syst. Sci.*, 453–469, <https://doi.org/10.5194/hess-15-453-2011>, 2011.

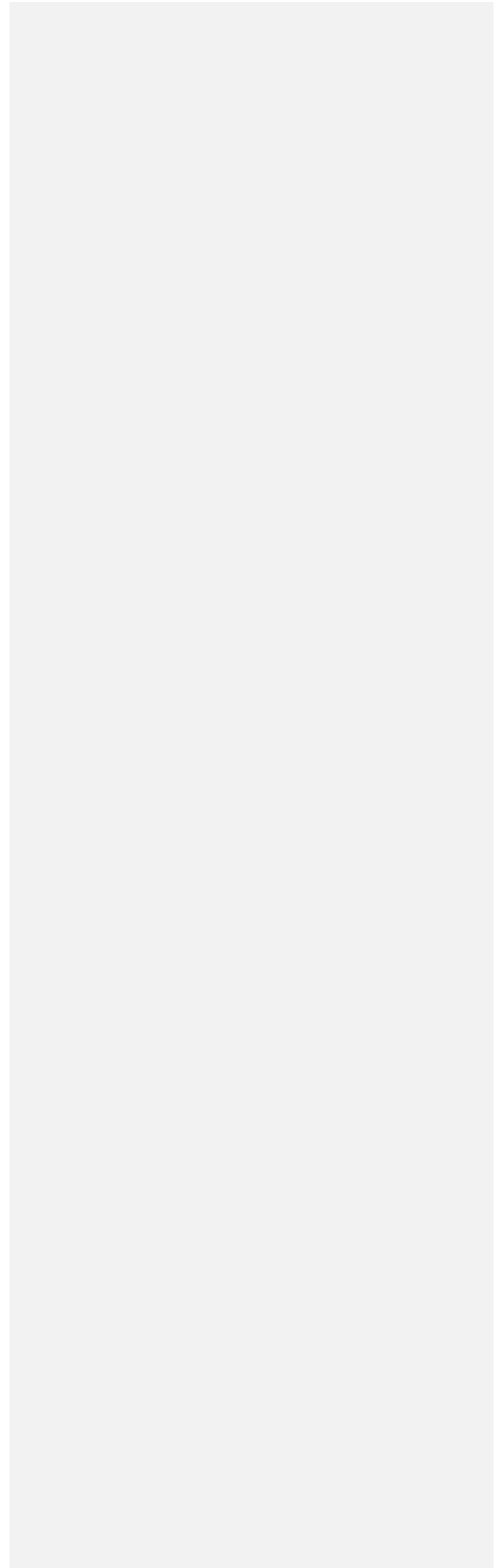
- Gruber, A., Scanlon, T., van der Schalie, R., Wagner, W., and Dorigo, W.: Evolution of the ESA CCI Soil Moisture climate data records and their underlying merging methodology, *Earth Syst. Sci. Data*, 11, 717–739, <https://doi.org/10.5194/essd-11-717-2019>, 2019.
- 5 Gupta, H. V., Kling, H., Yilmaz, K. K., and Martinez, G. F.: Decomposition of the mean squared error and NSE performance criteria: Implications for improving hydrological modelling, *J. Hydrol.*, 377, 80–91, <https://doi.org/10.1016/j.jhydrol.2009.08.003>, 2009.
- Hagemann, S.: An improved land surface parameter dataset for global and regional climate models, Max-Planck-Institut für Meteorologie, Hamburg, 2002.
- 10 Hagemann, S. and Gates, L. D.: Improving a subgrid runoff parameterization scheme for climate models by the use of high resolution data derived from satellite observations, *Clim. Dyn.*, 21, 349–359, 2003.
- Hagemann, S., Botzet, M., Dümenil, L., and Machenhauer, B.: Derivation of global GCM boundary conditions from 1 km land use satellite data, Max-Planck-Institut für Meteorologie, Hamburg, 1999.
- Hamon, W. R.: Computation of direct runoff amounts from storm rainfall, *Int. Assoc. Sci. Hydrol. Publ.*, 63, 52–62, 1963.
- 15 Hengl, T., Jesus, J. M. de, Heuvelink, G. B. M., Gonzalez, M. R., Kilibarda, M., Blagotić, A., Shangguan, W., Wright, M. N., Geng, X., Bauer-Marschallinger, B., Guevara, M. A., Vargas, R., MacMillan, R. A., Batjes, N. H., Leenaars, J. G. B., Ribeiro, E., Wheeler, I., Mantel, S., and Kempen, B.: SoilGrids250m: Global gridded soil information based on machine learning, *PLOS ONE*, 12, e0169748, <https://doi.org/10.1371/journal.pone.0169748>, 2017.
- 20 Hirabayashi, Y., Mahendran, R., Koirala, S., Konoshima, L., Yamazaki, D., Watanabe, S., Kim, H., and Kanae, S.: Global flood risk under climate change, *Nat. Clim. Change*, 3, 816–821, <https://doi.org/10.1038/nclimate1911>, 2013.
- Hoch, J. M.: `perglobwb_utils`, <https://doi.org/10.5281/zenodo.5725659>, 2021.
- 25 Hofste, R. W., Kuzma, S., Walker, S., Sutanudjaja, E. H., Bierkens, M. F. P., Kuijper, M. J. M., Sanchez, M. F., Van Beek, L. P. H., Wada, Y., Rodriguez, S. G., and Reig, P.: Aqueduct 3.0: Updated decision-relevant global water risk indicators, World Resources Institute, Washington, D.C., 2019.
- Hut, R. W., van de Giesen, N. C., and Drost, N.: Comment on “Most computational hydrology is not reproducible, so is it really science?” by Christopher Hutton et al.: Let hydrologists learn the latest computer science by working with Research Software Engineers (RSEs) and not reinvent the waterwheel ourselves, *Water Resour. Res.*, 53, 4524–4526, <https://doi.org/10.1002/2017WR020665>, 2017.
- 30 de Jong, K., Panja, D., van Kreveld, M., and Karssenber, D.: An environmental modelling framework based on asynchronous many-tasks: Scalability and usability, *Environ. Model. Softw.*, 139, 104998, <https://doi.org/10.1016/j.envsoft.2021.104998>, 2021.
- 35 de Jong, K., Panja, D., Karssenber, D., and van Kreveld, M.: Scalability and composability of flow accumulation algorithms based on asynchronous many-tasks, *Comput. Geosci.*, 162, 105083, <https://doi.org/10.1016/j.cageo.2022.105083>, 2022.
- Kew, S. F., Philip, S. Y., Hauser, M., Hobbins, M., Wanders, N., van Oldenborgh, G. J., van der Wiel, K., Veldkamp, T. I. E., Kimutai, J., Funk, C., and Otto, F. E. L.: Impact of precipitation and increasing temperatures on drought trends in eastern Africa, *Earth Syst. Dyn.*, 12, 17–35, <https://doi.org/10.5194/esd-12-17-2021>, 2021.
- 40 Knoben, W. J., Freer, J. E., and Woods, R. A.: Inherent benchmark or not? Comparing Nash–Sutcliffe and Kling–Gupta efficiency scores, *Hydrol. Earth Syst. Sci.*, 23, 4323–4331, <https://doi.org/10.5194/hess-23-4323-2019>, 2019.
- 45 Kollet, S. J. and Maxwell, R. M.: Integrated surface–groundwater flow modeling: A free-surface overland flow boundary condition in a parallel groundwater flow model, *Adv. Water Resour.*, 29, 945–958, <https://doi.org/10.1016/j.advwatres.2005.08.006>, 2006.

Deleted: Hoch, J. M., Neal, J. C., Baart, F., van Beek, R., Winsemius, H. C., Bates, P. D., and Bierkens, M. F. P.: GLOFRIM v1.0 – A globally applicable computational framework for integrated hydrological–hydrodynamic modelling, *Geosci. Model Dev.*, 10, 3913–3929, <https://doi.org/10.5194/gmd-10-3913-2017>, 2017. 
Hoch, J. M., Eilander, D., Ikeuchi, H., Baart, F., and Winsemius, H. C.: Evaluating the impact of model complexity on flood wave propagation and inundation extent with a hydrologic–hydrodynamic model coupling framework, *Nat. Hazards Earth Syst. Sci.*, 19, 1723–1735, <https://doi.org/10.5194/nhess-19-1723-2019>, 2019. 

- Kollet, S. J., Maxwell, R. M., Woodward, C. S., Smith, S., Vanderborght, J., Vereecken, H., and Simmer, C.: Proof of concept of regional scale hydrologic simulations at hydrologic resolution utilizing massively parallel computer resources, *Water Resour. Res.*, 46, <https://doi.org/10.1029/2009WR008730>, 2010.
- 5 Kornfeld, R. P., Arnold, B. W., Gross, M. A., Dahya, N. T., Klipstein, W. M., Gath, P. F., and Bettadpur, S.: GRACE-FO: The Gravity Recovery and Climate Experiment Follow-On Mission, *J. Spacecr. Rockets*, 56, 931–951, <https://doi.org/10.2514/1.A34326>, 2019.
- Kraijenhoff Van de Leur, D.: A study of non-steady groundwater flow with special reference to a reservoir coefficient, *Ing.*, 70, B87–B94, 1958.
- 10 Lehner, B. and Döll, P.: Development and validation of a global database of lakes, reservoirs and wetlands, *J. Hydrol.*, 296, 1–22, <https://doi.org/10.1016/j.jhydrol.2004.03.028>, 2004.
- Lehner, B., Verdin, K., and Jarvis, A.: New Global Hydrography Derived From Spaceborne Elevation Data, *Eos Trans. Am. Geophys. Union*, 89, 93–94, <https://doi.org/10.1029/2008EO100001>, 2008.
- 15 Lehner, B., Liermann, C. R., Revenga, C., Vörösmarty, C., Fekete, B., Crouzet, P., Döll, P., Endejan, M., Frenken, K., Magome, J., Nilsson, C., Robertson, J. C., Rödel, R., Sindorf, N., and Wisser, D.: High-resolution mapping of the world's reservoirs and dams for sustainable river-flow management, *Front. Ecol. Environ.*, 9, 494–502, <https://doi.org/10.1890/100125>, 2011.
- Loveland, T. R., Reed, B. C., Brown, J. F., Ohlen, D. O., Zhu, Z., Yang, L., and Merchant, J. W.: Development of a global land cover characteristics database and IGBP DISCover from 1 km AVHRR data, *Int. J. Remote Sens.*, 21, 1303–1330, <https://doi.org/10.1080/014311600210191>, 2000.
- 20 Martens, B., Gonzalez Miralles, D., Lievens, H., Van Der Schalie, R., De Jeu, R. A., Fernández-Prieto, D., Beck, H. E., Dorigo, W., and Verhoest, N.: GLEAM v3: Satellite-based land evaporation and root-zone soil moisture, *Geosci. Model Dev.*, 10, 1903–1925, <https://doi.org/10.5194/gmd-10-1903-2017>, 2017.
- Maxwell, R. M., Condon, L. E., and Kollet, S. J.: A high-resolution simulation of groundwater and surface water over most of the continental US with the integrated hydrologic model ParFlow v3, *Geosci. Model Dev.*, 8, 923–937, <https://doi.org/10.5194/gmd-8-923-2015>, 2015.
- 25 Melsen, L. A., Teuling, A. J., Torfs, P. J. J. F., Uijlenhoet, R., Mizukami, N., and Clark, M. P.: HESS Opinions: The need for process-based evaluation of large-domain hyper-resolution models, *Hydrol. Earth Syst. Sci.*, 20, 1069–1079, <https://doi.org/10.5194/hess-20-1069-2016>, 2016.
- 30 Muñoz-Sabater, J., Dutra, E., Agustí-Panareda, A., Albergel, C., Arduini, G., Balsamo, G., Boussetta, S., Choulga, M., Harrigan, S., Hersbach, H., Martens, B., Miralles, D. G., Piles, M., Rodríguez-Fernández, N. J., Zsoter, E., Buontempo, C., and Thépaut, J.-N.: ERA5-Land: a state-of-the-art global reanalysis dataset for land applications, *Earth Syst. Sci. Data*, 13, 4349–4383, <https://doi.org/10.5194/essd-13-4349-2021>, 2021.
- Newman, A. J., Clark, M. P., Sampson, K., Wood, A., Hay, L. E., Bock, A., Viger, R. J., Blodgett, D., Brekke, L., Arnold, J. R., Hopson, T., and Duan, Q.: Development of a large-sample watershed-scale hydrometeorological data set for the contiguous USA: data set characteristics and assessment of regional variability in hydrologic model performance, *Hydrol. Earth Syst. Sci.*, 19, 209–223, <https://doi.org/10.5194/hess-19-209-2015>, 2015.
- 35 Olson, J.: Global ecosystem framework: Definitions. Internal report., USGS EROS Data Center, Sioux Falls, SD, 1994a.
- Olson, J.: Global ecosystem framework: Translation strategy. Internal report., USGS EROS Data Center, Sioux Falls, SD, 1994b.
- 40 O'Neill, M. M. F., Tijerina, D. T., Condon, L. E., and Maxwell, R. M.: Assessment of the ParFlow–CLM CONUS 1.0 integrated hydrologic model: evaluation of hyper-resolution water balance components across the contiguous United States, *Geosci. Model Dev.*, 14, 7223–7254, <https://doi.org/10.5194/gmd-14-7223-2021>, 2021.
- 45 Philip, S., Sparrow, S., Kew, S. F., van der Wiel, K., Wanders, N., Singh, R., Hassan, A., Mohammed, K., Javid, H., Hausteijn, K., Otto, F. E. L., Hirpa, F., Rimi, R. H., Islam, A. K. M. S., Wallom, D. C. H., and van Oldenborgh,

- G. J.: Attributing the 2017 Bangladesh floods from meteorological and hydrological perspectives, *Hydrol. Earth Syst. Sci.*, 23, 1409–1429, <https://doi.org/10.5194/hess-23-1409-2019>, 2019.
- Portmann, F. T., Siebert, S., and Döll, P.: MIRCA2000—Global monthly irrigated and rainfed crop areas around the year 2000: A new high-resolution data set for agricultural and hydrological modeling, *Glob. Biogeochem. Cycles*, 24, <https://doi.org/10.1029/2008GB003435>, 2010.
- 5 Samaniego, L., Kumar, R., and Attinger, S.: Multiscale parameter regionalization of a grid-based hydrologic model at the mesoscale, *Water Resour. Res.*, 46, <https://doi.org/10.1029/2008WR007327>, 2010.
- Samaniego, L., Kumar, R., Thober, S., Rakovec, O., Zink, M., Wanders, N., Eisner, S., Müller Schmied, H., Sutanudjaja, E. H., Warrach-Sagi, K., and Attinger, S.: Toward seamless hydrologic predictions across spatial scales, *Hydrol. Earth Syst. Sci.*, 21, 4323–4346, <https://doi.org/10.5194/hess-21-4323-2017>, 2017.
- 10 Samaniego, L., Thober, S., Kumar, R., Wanders, N., Rakovec, O., Pan, M., Zink, M., Sheffield, J., Wood, E. F., and Marx, A.: Anthropogenic warming exacerbates European soil moisture droughts, *Nat. Clim. Change*, 8, 421–426, <https://doi.org/10.1038/s41558-018-0138-5>, 2018.
- Schellekens, J., Verseveld, W. van, Visser, M., Winsemius, H. C., Bouaziz, L., tanjaeuser, sanderdevries, cthiange, hboisgon, DanielTollenaar, Baart, F., Pieter9011, Pronk, M., arthur-lutz, ctenvelden, Imme1992, Eilander, D., and Jansen, M.: openstreams/wflow: Bug fixes and updates for release 2020.1.2, , <https://doi.org/10.5281/zenodo.4291730>, 2020.
- 15 Shaw, J., Kesserwani, G., Neal, J., Bates, P., and Sharifian, M. K.: LISFLOOD-FP 8.0: the new discontinuous Galerkin shallow-water solver for multi-core CPUs and GPUs, *Geosci. Model Dev.*, 14, 3577–3602, <https://doi.org/10.5194/gmd-14-3577-2021>, 2021.
- 20 Siebert, S. and Döll, P.: Quantifying blue and green virtual water contents in global crop production as well as potential production losses without irrigation, *J. Hydrol.*, 384, 198–217, <https://doi.org/10.1016/j.jhydrol.2009.07.031>, 2010.
- Straatsma, M., Droogers, P., Hunink, J., Berendrecht, W., Buitink, J., Buytaert, W., Karssenber, D., Schmitz, O., Sutanudjaja, E. H., and van Beek, L. P. H.: Global to regional scale evaluation of adaptation measures to reduce the future water gap, *Environ. Model. Softw.*, 124, 104578, <https://doi.org/10.1016/j.envsoft.2019.104578>, 2020.
- 25 Sutanudjaja, E. H., Beek, L. P. H. van, Jong, S. M. de, Geer, F. C. van, and Bierkens, M. F. P.: Large-scale groundwater modeling using global datasets: a test case for the Rhine-Meuse basin, *Hydrol. Earth Syst. Sci.*, 15, 2913–2935, <https://doi.org/10.5194/hess-15-2913-2011>, 2011.
- 30 Sutanudjaja, E. H., van Beek, R., Wanders, N., Wada, Y., Bosmans, J. H. C., Drost, N., van der Ent, R. J., de Graaf, I. E. M., Hoch, J. M., de Jong, K., Karssenber, D., López López, P., Pefenteiner, S., Schmitz, O., Straatsma, M. W., Vannamtee, E., Wisser, D., and Bierkens, M. F. P.: PCR-GLOBWB 2: a 5 arcmin global hydrological and water resources model, *Geosci. Model Dev.*, 11, 2429–2453, <https://doi.org/10.5194/gmd-11-2429-2018>, 2018.
- 35 Teluguntla, P., Thenkabail, P., Xiong, J., Gumma, M., Giri, C., Milesi, C., Ozdogan, M., Congalton, R., Tilton, J., Sankey, T., Massey, R., Phalke, A., and Yadav, K.: NASA Making Earth System Data Records for Use in Research Environments (MEaSUREs) Global Food Security Support Analysis Data (GFSAD) Crop Mask 2010 Global 1 km V001, NASA EOSDIS, Sioux Falls, SD, 2016.
- Thober, S., Cuntz, M., Kelbling, M., Kumar, R., Mai, J., and Samaniego, L.: The multiscale routing model mRM v1.0: simple river routing at resolutions from 1 to 50 km, *Geosci. Model Dev.*, 12, 2501–2521, <https://doi.org/10.5194/gmd-12-2501-2019>, 2019.
- 40 Todini, E.: The ARNO rainfall—runoff model, *J. Hydrol.*, 175, 339–382, 1996.
- Towner, J., Cloke, H. L., Zsoter, E., Flamig, Z., Hoch, J. M., Bazo, J., Coughlan de Perez, E., and Stephens, E. M.: Assessing the performance of global hydrological models for capturing peak river flows in the Amazon basin, *Hydrol Earth Syst Sci*, 23, 3057–3080, <https://doi.org/10.5194/hess-23-3057-2019>, 2019.
- 45

- Vergopolan, N., Chaney, N. W., Beck, H. E., Pan, M., Sheffield, J., Chan, S., and Wood, E. F.: Combining hyper-resolution land surface modeling with SMAP brightness temperatures to obtain 30-m soil moisture estimates, *Remote Sens. Environ.*, 242, 111740, <https://doi.org/10.1016/j.rse.2020.111740>, 2020.
- 5 Vergopolan, N., Chaney, N. W., Pan, M., Sheffield, J., Beck, H. E., Ferguson, C. R., Torres-Rojas, L., Sadri, S., and Wood, E. F.: SMAP-HydroBlocks, a 30-m satellite-based soil moisture dataset for the conterminous US, *Sci. Data*, 8, 264, <https://doi.org/10.1038/s41597-021-01050-2>, 2021.
- Verkaik, J., Hughes, J. D., van Walsum, P. E. V., Oude Essink, G. H. P., Lin, H. X., and Bierkens, M. F. P.: Distributed memory parallel groundwater modeling for the Netherlands Hydrological Instrument, *Environ. Model. Softw.*, 143, 105092, <https://doi.org/10.1016/j.envsoft.2021.105092>, 2021.
- 10 Verkaik, J., Sutanudjaja, E. H., Oude Essink, G. H. P., Lin, H. X., and Bierkens, M. F. P.: GLOBGM v1.0: a parallel implementation of a 30 arcsec PCR-GLOBWB-MODFLOW global-scale groundwater model, *Geosci. Model Dev. Discuss.*, 1–27, <https://doi.org/10.5194/gmd-2022-226>, 2022.
- Ward, P. J., Jongman, B., Salamon, P., Simpson, A., Bates, P., De Groeve, T., Muis, S., de Perez, E. C., Rudari, R., Trigg, M. A., and Winsemius, H. C.: Usefulness and limitations of global flood risk models, *Nat. Clim. Change*, 5, 712–715, <https://doi.org/10.1038/nclimate2742>, 2015.
- 15 Ward, P. J., Winsemius, H. C., Kuzma, S., Bierkens, M. F. P., Bouwman, A., Moel, H. D., Loaiza, A. D., Englhardt, J., Erkens, G., Gebremedhin, E. T., Iceland, C., Kooi, H., Ligtoet, W., Muis, S., Scussolini, P., Sutanudjaja, E. H., Beck, R. V., Bommel, B. V., Huijstee, J. V., Vatvani, D., Verlaan, M., Tiggeoven, T., and Luo, T.: *Aqueduct Floods Methodology*, World Resources Institute, Washington, D.C., 2020a.
- 20 Ward, P. J., de Ruiter, M. C., Mård, J., Schröter, K., Van Loon, A., Veldkamp, T., von Uexkull, N., Wanders, N., AghaKouchak, A., Arnbjerg-Nielsen, K., Capewell, L., Carmen Llasat, M., Day, R., Dewals, B., Di Baldassarre, G., Huning, L. S., Kreibich, H., Mazzoleni, M., Savelli, E., Teutschbein, C., van den Berg, H., van der Heijden, A., Vincken, J. M. R., Waterloo, M. J., and Wens, M.: The need to integrate flood and drought disaster risk reduction strategies, *Water Secur.*, 11, 100070, <https://doi.org/10.1016/j.wasec.2020.100070>, 2020b.
- 25 water2invest web service: <http://w2i.geo.uu.nl/>, last access: 15 October 2021.
- van der Wiel, K., Wanders, N., Seltin, F. M., and Bierkens, M. F. P.: Added Value of Large Ensemble Simulations for Assessing Extreme River Discharge in a 2 °C Warmer World, *Geophys. Res. Lett.*, 46, 2093–2102, <https://doi.org/10.1029/2019GL081967>, 2019.
- 30 Winsemius, H. C., Aerts, J. C. J. H., van Beek, L. P. H., Bierkens, M. F. P., Bouwman, A., Jongman, B., Kwadijk, J. C. J., Ligtoet, W., Lucas, P. L., van Vuuren, D. P., and Ward, P. J.: Global drivers of future river flood risk, *Nat. Clim. Change*, 6, 381–385, <https://doi.org/10.1038/nclimate2893>, 2016.
- Wood, E. F., Roundy, J. K., Troy, T. J., van Beek, L. P. H., Bierkens, M. F. P., Blyth, E., de Roo, A., Döll, P., Ek, M., Famiglietti, J., Gochis, D., van de Giesen, N., Houser, P., Jaffé, P. R., Kollet, S., Lehner, B., Lettenmaier, D. P., Peters-Lidard, C., Sivapalan, M., Sheffield, J., Wade, A., and Whitehead, P.: Hyperresolution global land surface modeling: Meeting a grand challenge for monitoring Earth’s terrestrial water, *Water Resour. Res.*, 47, <https://doi.org/10.1029/2010WR010090>, 2011.
- 35 Aqueduct Global Flood Analyzer: <http://floods.wri.org/#/>, last access: 15 October 2021.
- WWF: *WWF Water Risk Filter Methodology Documentation*, World Wide Fund for Nature (WWF), Berlin, German, 2022.
- 40 Yamazaki, D., Ikeshima, D., Sosa, J., Bates, P. D., Allen, G. H., and Pavelsky, T. M.: MERIT Hydro: A High-Resolution Global Hydrography Map Based on Latest Topography Dataset, *Water Resour. Res.*, 55, 5053–5073, <https://doi.org/10.1029/2019WR024873>, 2019.



Page 13: [1] Deleted Jannis Hoch 10/03/2023 14:38:00



Page 14: [2] Deleted Jannis Hoch 10/03/2023 14:38:00



Page 14: [3] Deleted Jannis Hoch 10/03/2023 14:38:00



Page 14: [4] Deleted Jannis Hoch 10/03/2023 14:38:00



Page 14: [5] Deleted Jannis Hoch 10/03/2023 14:38:00



Page 14: [6] Deleted Jannis Hoch 10/03/2023 14:38:00



Page 15: [7] Deleted Jannis Hoch 10/03/2023 14:38:00



Page 15: [8] Deleted Jannis Hoch 10/03/2023 14:38:00



Page 15: [9] Deleted Jannis Hoch 10/03/2023 14:38:00



Page 15: [10] Deleted Jannis Hoch 10/03/2023 14:38:00

