

# Evaluation of E3SM Land Model snow simulations over the Western United States

Deleted: processes

Deleted: s in E3SM land model

Dalei Hao<sup>1</sup>, Gautam Bisht<sup>1</sup>, Karl Rittger<sup>2</sup>, Timbo Stillinger<sup>3</sup>, Edward Bair<sup>3</sup>, Yu Gu<sup>4</sup>, L. Ruby Leung<sup>1</sup>

<sup>1</sup>Atmospheric Sciences and Global Change Division, Pacific Northwest National Laboratory, Richland, WA, USA Laboratory

5 <sup>2</sup>Institute for Arctic and Alpine Research, University of Colorado, Boulder, CO, USA

<sup>3</sup>Earth Research Institute, University of California, Santa Barbara, CA, USA

<sup>4</sup>Joint Institute for Regional Earth System Science and Engineering and Department of Atmospheric and Oceanic Sciences, University of California, Los Angeles, CA, USA

Correspondence to: dalei.hao@pnnl.gov

10 **Abstract.** Seasonal snow has crucial impacts on climate, ecosystems and humans, but it is vulnerable to global warming. The land component (ELM) of the Energy Exascale Earth System Model (E3SM), mechanistically simulates snow processes from accumulation, canopy interception, compaction, snow aging to melt. Although high-quality field measurements, remote sensing snow products and data assimilation products with high spatio-temporal resolution are available, there has been no systematic evaluation of the snow properties and phenology in ELM. This study comprehensively evaluates ELM snow  
15 simulations over the western United States at 0.125° resolution during 2001-2019 using the Snow Telemetry (SNOTEL) in situ networks, MODIS remote sensing products (i.e., MCD43 surface albedo product, the spatially and temporally complete (STC) Snow-Covered Area and Grain Size (MODSCAG) and MODIS Dust and Radiative Forcing in Snow (MODDRFS) products (STC-MODSCAG/STC-MODDRFS), and the Snow Property Inversion from Remote Sensing (SPIReS) product) and two data assimilation products of snow water equivalent and snow depth (i.e., University of Arizona (UA) and SNOW  
20 Data Assimilation System (SNODAS)). Overall the ELM simulations are consistent with the benchmarking datasets and reproduce the spatio-temporal patterns, interannual variability and elevation gradients for different snow properties including snow cover fraction ( $f_{sno}$ ), surface albedo ( $\alpha_{sur}$ ) over snow cover regions, snow water equivalent (SWE) and snow depth ( $D_{sno}$ ). However, there are large biases of  $f_{sno}$  with dense forest cover and  $\alpha_{sur}$  in the Rocky Mountains and Sierra Nevada in winter, compared to the MODIS products. There are large discrepancies of snow albedo, snow grain size and light-absorbing particles  
25 induced snow albedo reduction between ELM and the MODIS products, attributed to uncertainties in the aerosol forcing data, snow aging processes in ELM, and remote sensing retrievals. Against UA and SNODAS, ELM has a mean bias of -20.7 mm (-35.9%) and -20.4 mm (-35.5%), respectively for spring, and -13.8 mm (-27.8%) and -10.2 mm (-22.2%), respectively for winter. ELM shows a relatively high correlation with SNOTEL SWE, with mean correlation coefficients of 0.69, but negative mean biases of -122.7 mm. Compared to the snow phenology of STC-MODSCAG and SPIReS, ELM shows delayed snow  
30 accumulation onset date by 17.3 and 12.4 days, earlier snow end date by 35.5 and 26.8 days, and shorter snow duration by 52.9 and 39.5 days, respectively. This study underscores the need for diagnosing model biases and improving ELM

Deleted: , respectively

35 representations of snow properties and snow phenology in mountainous areas for more credible simulation and future  
projection of mountain snowpack.

## 1 Introduction

Snow, a key component of the cryosphere, has a large influence on the terrestrial energy budget and water and carbon cycles (Berghuijs et al., 2014; Niittynen et al., 2018). With high albedo and low thermal conductivity, snow also affects regional  
40 climate (Flanner et al., 2011; Henderson et al., 2018; Skiles et al., 2018). Under global warming, less precipitation will fall as snow and snow will melt earlier (Barnett et al., 2005), which will have large impacts on water availability in snow-dominated regions (Barnett et al., 2005; Musselman et al., 2021). Climate models project the snow water equivalent (SWE) declines of  
~25% by 2050 for the Western United States (WUS; see Table A1 for acronyms and symbols used in the study) (Musselman et al., 2021; Siirila-Woodburn et al., 2021), with large impacts on ecosystem function, wildlife habitats, flood hazard, tourism,  
45 recreation and socio-economic activities (Hamlet and Lettenmaier, 2007; Mameno et al., 2022). Accurately characterizing and projecting future changes in snow processes and timing of these changes is crucial for planning our response to climate change.

Numerous parameterizations and models with various degrees of complexity have been developed to simulate seasonal snow dynamics and improve our understanding of snow processes (Krinner et al., 2018; Lee et al., 2021; Magnusson et al., 2015).  
50 These parameterizations/models have been coupled to land surface models (LSMs) (Krinner et al., 2018) to represent snow grain particles (Räsänen et al., 2017), snow cover (Swenson and Lawrence, 2012), snow albedo (Flanner et al., 2007), snowpack compaction (Decharme et al., 2016), and snow interception by vegetation (Lundquist et al., 2021). The Energy Exascale Earth System Model (E3SM) Land Model (ELM) (Leung et al., 2020) includes a multi-layer snow scheme to simulate the prognostic snow processes such as snow accumulation, snow interception, snow compaction, and snow melt. Recently, the  
55 snow albedo model in ELM was improved to include new radiative transfer solvers with improved accuracy (Dang et al., 2019), add non-spherical snow grain shape (Hao et al., 2022a), account for the internal mixing of light-absorbing particles (LAPs) with snow (Böttcher et al., 2014); Hao et al., 2022a), and incorporate new parameterizations to account for the sub-grid topographic effects on solar radiation (Hao et al., 2021; Hao et al., 2022b) (see Section 2.1 for details). With these enhancements and improvements, ELM may skillfully simulate snow dynamics at a regional scale (e.g., WUS).

60 Previous studies evaluated simulations of snow cover fraction ( $f_{\text{sno}}$ ), SWE, snow depth ( $D_{\text{sno}}$ ) (Toure et al., 2018; Toure et al., 2016) and snowmelt timing (Toure et al., 2018) in the Community Land Model V4 (CLM4) in the Northern Hemisphere at a coarse spatial resolution of  $0.5^\circ \times 0.67^\circ$ . The  $0.25^\circ$  simulations of surface albedo ( $\alpha_{\text{sur}}$ ),  $f_{\text{sno}}$  and SWE in the Canadian Land Surface Scheme (CLASS) were evaluated over eastern Canada (Verseghy et al., 2017), but snow phenology was not assessed.  
65 Monthly SWE in the  $1^\circ$  coupled land-atmosphere simulations of E3SM v1 was evaluated over the Contiguous United States by (Brunke et al., 2021), who attributed SWE uncertainties to the biases in temperature and precipitation. Overall, previous

studies only evaluated a few snow variables in LSMs mostly at coarse spatial resolutions (Table A2), although more high-resolution remote sensing observations and data assimilation products of snow variables (e.g., snow albedo ( $\alpha_{sno}$ ), snow grain size ( $S_{sno}$ ) and snow albedo reduction induced by LAPs in snow ( $R_{sno}$ )) have become available. The snow phenology in LSMs has rarely been evaluated explicitly and how LSMs capture the interannual variability of snow variables and how those variables vary along an elevation gradient have not been well investigated.

A series of high-quality field snow measurements, remote sensing and data assimilation snow datasets/products with high spatio-temporal resolution are available over the WUS. The *in situ* Snow Telemetry (SNOTEL) stations widely distributed across the WUS provide long-term SWE field measurements (Serreze et al., 1999). Optical remote sensing data has been widely used to map snow dynamics (Dietz et al., 2012; Dong, 2018). The Moderate Resolution Imaging Spectroradiometer (MODIS) reflectance data at 463 m spatial resolution have been used to retrieve multiple key snow-related variables including  $\alpha_{sur}$  (Schaaf et al., 2002),  $f_{sno}$  (Bair et al., 2021c; Painter et al., 2009),  $\alpha_{sno}$ ,  $S_{sno}$ , and  $R_{sno}$  (Bair et al., 2021c; Painter et al., 2012). These MODIS data accurately capture snow dynamics during accumulation and melt (Rittger et al., 2013; Wang et al., 2018) and the high daily temporal resolution of these datasets is helpful for capturing rapid snow variations. Some available remote sensing snow phenology products (Chen et al., 2015; Metsämäki et al., 2018; Takala et al., 2009) adopt different optical or microwave satellite observations to extract snow phenology date and duration. Besides, they use different snow phenology definitions, and include different snow phenology metrics, which can affect their use as a reference. Alternatively, the same phenology extraction methods can be used to derive snow phenology metrics for both LSMs and MODIS daily  $f_{sno}$  data, avoiding inconsistencies of definitions and extraction methods. Data assimilated SWE and snow depth ( $D_{sno}$ ) products are also available that integrate field measurements, remote sensing observations, and model simulations (Center, 2004; Zeng et al., 2018). These data assimilation products have high spatial resolution of <5 km and higher reliability over mountainous and forested regions due to the constraints of *in situ* networks (Dawson et al., 2018). These datasets provide good opportunity for comprehensively evaluating the accuracy of snow variables and snow phenology in LSMs.

The aim of this study is to systematically evaluate the high-resolution 0.125° ELM simulations of key snow variables and snow phenology over the WUS, using *in situ*, remote sensing and data assimilation snow products. Specifically, offline ELM simulations with new improvements related to snow processes over the WUS were conducted during 2001-2019. Field snow measurements, three MODIS remote sensing products, and two data assimilation snow products were collected as benchmarking datasets for the ELM simulations (see Section 2.3 for details). All the ELM outputs and benchmarking datasets were regridded to an identical spatio-temporal resolution of 0.125° and daily. Snow properties variables including  $\alpha_{sur}$ ,  $f_{sno}$ ,  $\alpha_{sno}$ ,  $S_{sno}$ ,  $R_{sno}$ , SWE and  $D_{sno}$  were used in the analysis. Multiple snow phenology metrics were derived from both ELM and remote sensing products using the same definitions and extraction methods (see Section 2.4 for details). The spatial patterns, temporal correlations, interannual variabilities, elevation gradients, and change with forest cover of snow properties and snow

Field Code Changed

Formatted: Danish

Field Code Changed

phenology in ELM were evaluated against the benchmarking datasets. Uncertainties in the ELM and benchmarking datasets, implications for model improvements and limitations of the study are discussed.

## 2 Materials and Methods

### 2.1 Model description

105 ELM, the land component of E3SM, originates from the Community Land Model Version 4.5 (CLM4.5) (Golaz et al., 2019). ELM uses a multi-layer scheme (up to 5 layers by default) to dynamically simulate various snow processes, e.g., snow accumulation, melting, aging (i.e., the evolution of snow grain size), compaction, metamorphism, aerosol deposition and redistribution, and canopy snow interception and unloading. Specifically, ELM uses the Snow, Ice, and Aerosol Radiative (SNICAR) model to calculate snow albedo and vertically-resolved absorption of solar radiation, considering the evolving snow grain size, solar zenith angles (SZAs), sky conditions, underlying background and snow impurities (e.g., black carbon (BC) and dust) (Flanner et al., 2007). ELM uses the snow water equivalent (SWE) and standard deviation of elevation to estimate snow cover fraction ( $f_{\text{sno}}$ ). The hysteresis of snow accumulation and ablation is also accounted for in ELM (Swenson and Lawrence, 2012).

115 Compared to CLM4.5, some key updates related to snow processes have been included in ELM. First, the original SNICAR model has been replaced by a hybrid model (SNICAR-AD) of SNICAR and delta-Eddington adding–doubling radiative transfer solver, which corrects the snow albedo bias for large SZAs and can better represent the shortwave radiative properties of snow (Dang et al., 2019). Second, compared to only external mixing in CLM4.5, both external mixing and internal mixing of hydrophilic BC-snow and dust-snow are now represented in ELM (Hao et al., 2022a; Wang et al., 2020). Third, the direct and diffuse irradiance under different atmospheric profiles and their dependence on SZA are included (Hao et al., 2022a). Fourth, the effects of non-spherical snow grain shape on snow albedo are considered (Hao et al., 2022a). Fifth, a new parameterization of sub-grid topographic effects on solar radiation has been implemented in ELM to account for the impacts of macro-scale shadow, occlusion and multi-scattering between adjacent terrain on surface albedo (Hao et al., 2021; Hao et al., 2022b).

### 125 2.2 Model setup and experiment design

Selected for this study, the WUS has heterogeneous topography with diverse elevations ranging from 0 to above 3 km (Figure 1a). The WUS includes three major mountain ranges: the Cascades Range, Sierra Nevada, and Rocky Mountains, which are characterized by frequent snow cover. The elevation data was acquired from the Shuttle Radar Topography Mission (SRTM) DEM dataset (Rabus et al., 2003). The forest cover data in 2010 shown in Figure 1b was acquired from the 30 m Landsat Vegetation Continuous Fields (VCF) tree cover datasets derived from the GFCC Surface Reflectance product (Sexton et al., 2013). Both the DEM and forest cover data were aggregated to  $0.125^\circ$  using the area-weighted average method. For analysis,

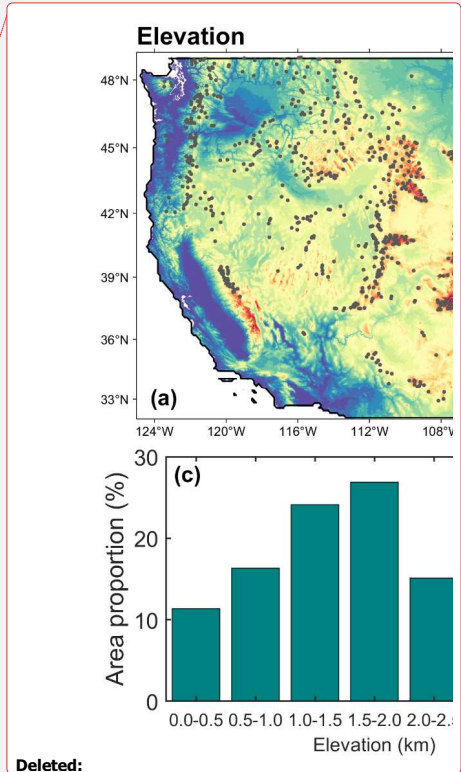
elevations were divided into different intervals (see Figure 1c). Elevations less than 0.5 km are not included in the statistical analysis as snow cover is close to 0. The forest cover was divided into five levels (see Figure 1d). The area fractions of different intervals of elevation and forest cover are shown in Figure 1c and 1d, respectively.

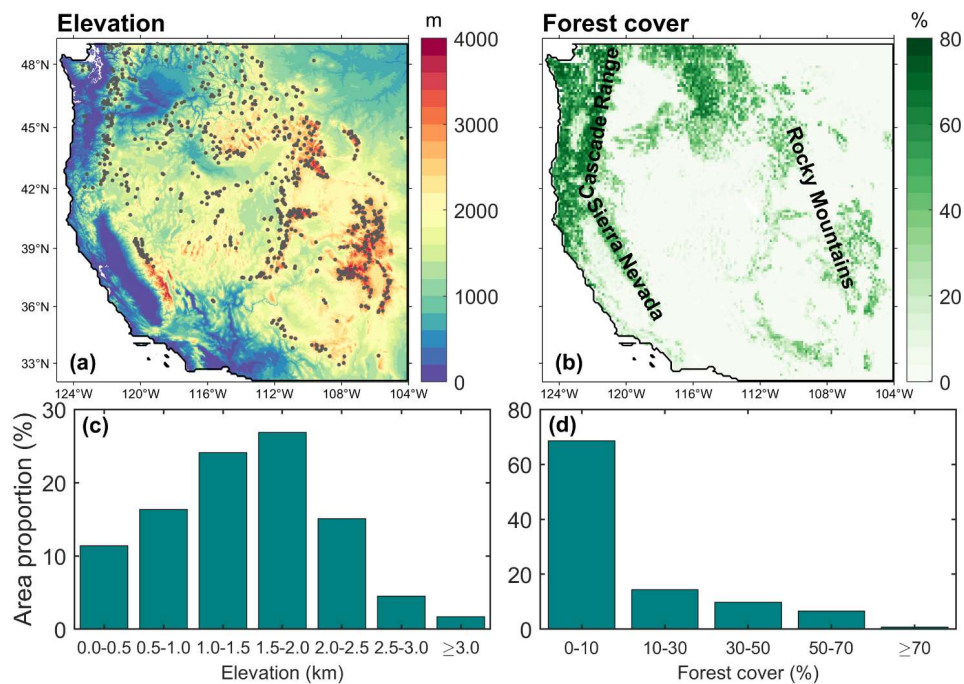
135

ELM simulations at 0.125° spatial resolution were conducted over the WUS from 1979 to 2019 driven by hourly meteorological forcing data from the National Land Data Assimilation System phase 2 (NLDAS-2) with spatial resolution of 0.125° (Xia et al., 2012). Specifically, the prescribed satellite phenology (SP) mode was used with input of MODIS leaf area index data (Myneni et al., 2002). The climatological monthly aerosol deposition data (e.g., black carbon and dust) with a spatial resolution of 1.9°×2.5° from the Community Atmosphere Model version 5 coupled with chemistry (Lamarque et al., 2010) was used, which was temporally and spatially downscaled to half-hourly and 0.125° using bilinear interpolation. For the snow albedo module, SNICAR-AD was configured with: 1) the SZA-dependence solar irradiance under the mid-latitude winter atmosphere, 2) spherical snow grain shape, 3) internal mixing of hydrophilic BC-snow, (4) external mixing of dust-snow, and (5) neglect of organic carbon due to its high uncertainties. The sub-grid topographic effects on solar radiation were included in the ELM configuration. The model was run at a half-hourly step. The first 31-year run from 1979 to 2000 was used to spin-up the model to reach equilibrium and then the remaining 19-year run (i.e. 2001-2019) was used in the analysis. The variables of interest were output at half-hourly, daily and monthly scales.

140

145





**Figure 1: Spatial distributions of (a) elevation and SNOTEL sites (grey points) and (b) forest cover over the WUS, and the area proportions of different (c) elevation and (d) forest cover intervals. The Cascades Range, Sierra Nevada, and Rocky Mountains are highlighted in panel (b).**

### 2.3 Benchmarking datasets

155 *In situ* Bias Correction and Quality Control (BCQC) SNOTEL daily SWE data from 2001-2019 (Table 1) were used as the  
 benchmarking dataset to evaluate the performance of ELM. SNOTEL stations, operated by the U.S. Department of Agriculture  
 Natural Resources Conservation Service (NRCS) provide long-term, widely-distributed and high-quality field measurements  
 of SWE across the WUS (<https://www.nrcs.usda.gov/>). BCQC SNOTEL eliminated data outliers and erroneous values, fixed  
 the inconsistencies of different variables, and corrected the bias of the raw data (Sun et al., 2019; Yan et al., 2018). Specifically,  
 160 788 SNOTEL sites in the WUS were included in the study (Figure 1a).

Three daily 463 m MODIS-based remote sensing products from 2001-2019 were used to evaluate the performance of ELM  
 (Table 1). The first one is the MCD43A3 surface albedo version 6 product (named as MCD43 hereafter). The MCD43 product

provides black-sky and white-sky surface albedo at local solar noon (Schaaf et al., 2002), which could well capture the snow effects on  $\alpha_{\text{sur}}$  (Wang et al., 2018). This dataset represents the albedo of the entire MODIS pixel which could include vegetation or soil if the observed pixel is not 100% snow cover, and thus it will underestimate snow albedo for fractionally covered pixels as vegetation and soil have darker broadband albedos. The second one is the spatially and temporally complete (STC) MODIS Snow-Covered Area and Grain size (MODSCAG) and MODIS Dust and Radiative Forcing in Snow (MODDRFS) product (we hereafter refer to as STC-MODSCAG/STC-MODDRFS). The third one is the Snow Property Inversion From Remote Sensing (SPIReS) product. These two products provide  $f_{\text{snow}}$ ,  $\alpha_{\text{snow}}$ ,  $S_{\text{snow}}$ , and  $R_{\text{snow}}$  at around 10:30 am local solar time and represent  $\alpha_{\text{snow}}$  (i.e. excluding soil and vegetation portions of the observed pixel). STC-MODSCAG first estimates  $f_{\text{snow}}$  and  $S_{\text{snow}}$  based on the spectral unmixing and physically-based snow radiative transfer models (Painter et al., 2009). STC-MODDRFS then uses  $S_{\text{snow}}$  to calculate the  $\alpha_{\text{snow}}$  of the clean snow with difference between clean and dirty (observed) snow for computing  $R_{\text{snow}}$  (Painter et al., 2012). SPIReS adopts a physically-based approach without empirical assumptions to simultaneously estimate  $f_{\text{snow}}$ ,  $\alpha_{\text{snow}}$ ,  $S_{\text{snow}}$ , and  $R_{\text{snow}}$  (Bair et al., 2021c). Both STC-MODSCAG/STC-MODDRFS and SPIReS are interpolated and smoothed to reduce the effects of data noise, cloud contamination and sun-sensor geometry (Bair et al., 2021c; Dozier et al., 2008; Rittger et al., 2020). Both of the  $f_{\text{snow}}$  products show good performance with the basin-wide root mean square error (RMSE) values of 6.5% and 6.7% against airborne lidar datasets (Stillinger et al., 2022). Initial validation against field measurements for  $S_{\text{snow}}$  at a single site for the original MODSCAG shows a 51  $\mu\text{m}$  mean absolute error for a clear sky day (Painter et al., 2009). The gap filled MODSCAG/MODDRFS at three sites in the WUS has an accuracy (RMSE) of 118  $\mu\text{m}$  for  $S_{\text{snow}}$  and 0.0036 for  $R_{\text{snow}}$  (Bair et al., 2019) considering both clear and cloud days. SPIReS has a  $\alpha_{\text{snow}}$  RMSE of 4.6% against the 3-year field measurements at Mammoth Mountain, CA (Bair et al., 2021c), nearly identical to the reported accuracy of 4.8% RMSE for STC-MODDRFS against the field measurements at the same site (Bair et al., 2019). Note that there is an underestimation of  $f_{\text{snow}}$  in the northern WUS region in winter occur because of a known issue in current versions of STC-MODSCAG (<https://nsidc.org/reports/snow-today?title=6>). Specifically, MOD09GA surface reflectance processed to produce STC-MODSCAG at the Jet Propulsion Laboratory (JPL) is not processed when SZA is larger than  $67.5^\circ$ . This issue is being resolved during the transfer of processing during 2022 to 2023 from JPL to the National Snow and Ice Data Center Distributed Active Archive. We conservatively excluded data north of  $42^\circ$  in latitude during the winter in our comparisons in Section 3.1.

Two data assimilation SWE and  $D_{\text{snow}}$  products from 2001-2019 were used to compare with ELM (Table 1). The first one is the University of Arizona (UA) daily snow product version 1 with the spatial resolution of 4 km over the Conterminous US (Zeng et al., 2018). This product was generated by fully utilizing the field measurements from multiple in situ networks including SNOTEL constrained by the gridded precipitation and temperature data in the 4 km Parameter-elevation Regressions on Independent Slopes Model (PRISM). A series of algorithm robustness tests and independent accuracy evaluations against remote sensing and airborne lidar measurements showed that the UA product is reliable as a reference snowpack dataset (Zeng et al., 2018). The second one is the SNOW Data Assimilation System (SNODAS) daily product with 1 km spatial resolution developed by the NOAA National Weather Service's National Operational Hydrologic Remote Sensing Center (Center, 2004).

SNODAS uses a physically consistent modeling and data assimilation framework to integrate physically-based model estimates and multi-source snow data from satellite remote sensing, airborne-based observations, and in situ measurements including SNOTEL. SNODAS has shown a similar performance as UA (Zeng et al., 2018). The SNODAS product is available from October, 2003 and thus only the data from 2004-2019 were used in the study. UA and SNODAS both assimilate the SNOTEL observations in their models directly, so better performance relative to those observations is expected, while the ELM simulations are not constrained by the SNOTEL data.

205 **Table 1. Summary of the in situ, remote sensing and data assimilation datasets used in the study. These datasets provide different snow properties variables, and snow cover fraction in both STC-MODSCAG/STC-MODDRFS and SPIReS was used to derive snow phenology metrics.**

Product Type	Product name	Snow property	Spatial resolution	Temporal resolution	Period	Reference
In situ	BCQC SNOTEL	Snow water equivalent (SWE)	Site-level	daily	2001-2019	(Sun et al., 2019; Yan et al., 2018)
Remote sensing	MODIS	Surface albedo ( $\alpha_{sur}$ )	463 m	daily	2001-2019	(Schaaf et al., 2002)
	MCD43A3					
	STC-MODSCAG	Snow cover fraction ( $f_{sno}$ )	463 m	daily	2001-2019	(Rittger et al., 2020)
	/STC-MODDRFS	Snow albedo ( $\alpha_{sno}$ ) Snow albedo reduction ( $R_{sno}$ ) Snow grain size ( $S_{sno}$ )				
Data assimilation	SPIReS	Snow cover fraction ( $f_{sno}$ ) Snow albedo ( $\alpha_{sno}$ ) Snow albedo reduction ( $R_{sno}$ ) Snow grain size ( $S_{sno}$ )	463 m	daily	2001-2019	(Bair et al., 2021c)
	UA	Snow water equivalent (SWE) Snow depth ( $D_{sno}$ )	4 km	daily	2001-2019	(Broxton et al., 2019; Zeng et al., 2018)
	SNODAS	Snow water equivalent (SWE) Snow depth ( $D_{sno}$ )	1 km	daily	2004-2019	(Center, 2004)

#### 2.4 Snow phenology extraction and data processing

210 Time series of  $f_{sno}$  from ELM and two remote sensing snow products (i.e., STC-MODSCAG and SPIReS) were used to extract the snow phenology (Figure 2). First, based on the observed seasonal cycle of snow cover over the ~~WUS~~ (Brutel-Vuilmet et al., 2013; Peng et al., 2013; Rittger et al., 2022), the snow accumulation and snowmelt seasons are defined as the periods from September to January and from February to August, respectively. Next, four snow timing dates and one duration metric were retrieved from ELM and remote sensing products that include: (1) snow accumulation onset date

Deleted: Northern Hemisphere



(Accumulation\_onset\_date), (2) snow cover depletion onset date (Depletion\_onset\_date), (3) snow cover depletion midpoint date (Midpoint\_date), (4) snow end date (End\_date) and (5) snow duration days (Duration). Following (Peng et al., 2013), Accumulation\_onset\_date for year  $t$  is defined as the first continuous five days with  $f_{sno} > 0.05$  during the snow accumulation season from September (year  $t-1$ ) to January (year  $t$ ), and End\_date is defined as the last continuous five days with  $f_{sno} > 0.05$  during the snowmelt season of the year  $t$ , to avoid the interference of ephemeral snow. Note that using different thresholds (e.g., 0.00, 0.03, 0.05, 0.10, 0.15) of  $f_{sno}$  to defining Accumulation\_onset\_date and End\_date can lead to different date estimates but the same conclusions, which are not shown in the paper. Duration was calculated as the number of days between Accumulation\_onset date and End\_date. Depletion\_onset\_date and Midpoint\_date were determined by fitting the  $f_{sno}$  time series during the snowmelt season using the sigmoid function (Anttila et al., 2018; Böttcher et al., 2014; Kouki et al., 2019):

$$f_{sno}^{DOY} = a + \frac{b}{1 + e^{c(DOY-d)}} \quad (1)$$

where DOY is day of year, and  $a$ ,  $b$ ,  $c$  and  $d$  are the fitted parameters. Specifically, the nonlinear Least Squares method was used to fit a sigmoid function. Following Anttila et al.(2018), Depletion\_onset\_date is defined as the date when the fitted sigmoid curve reaches 99% of its variation range, and Depletion\_midpoint\_date is defined as the date at the midpoint of the curve change (Figure 2). To reduce the impacts of noise, the retrievals at the individual pixels for a specific year was deemed as unsuccessful when (1) the  $f_{sno}$  difference at the start and end date of snowmelt season is smaller than 0.05; and (2) for the sigmoid fitting, the coefficient of determination ( $R^2$ ) between observed and fitted  $f_{sno}$  is smaller than 0.95 and RMSE is larger than 0.2. Only the pixels with successful retrievals of snow timing metrics for at least 10 years were used in the subsequent analysis.

235

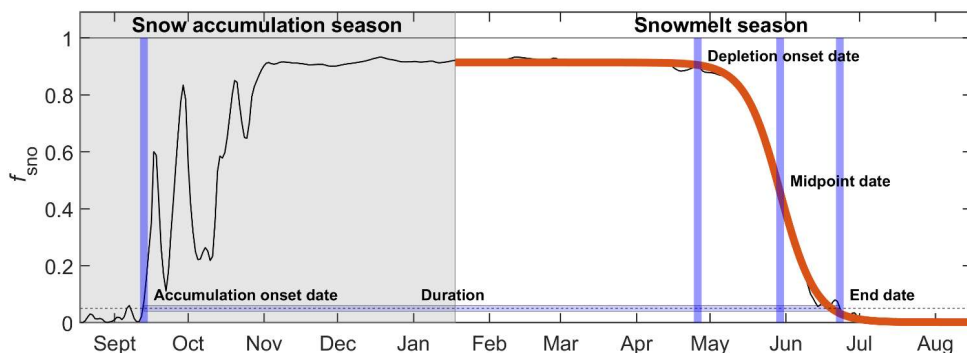


Figure 2: Time series of snow cover fraction ( $f_{sno}$ ) and sigmoid curve fitting at a typical pixel, represented by black and red lines, respectively. The blue lines indicate four phenology dates and one duration, and the shaded area shows the snow accumulation season.

Formatted: Not Superscript/ Subscript

Deleted:

240

MODIS data and ELM outputs were adjusted for temporal consistency and to unify the variable definitions. MCD43 only provides black-sky and white-sky albedo, and thus the ELM-derived ratio of diffuse to total solar radiation was used as a weighting factor to calculate  $\alpha_{sur}$  for the blue sky. For ELM, the average values of  $\alpha_{sur}$  from 11:30 am to 12:30 pm local solar time were calculated to match the time of MODIS MCD43 product, and those of  $f_{sno}$ ,  $\alpha_{sno}$ ,  $S_{sno}$ , and  $R_{sno}$  from 10:00 am to 11:00 am local solar time were calculated for ELM to match the time of STC-MODSCAG/STC-MODDRFS and SPIReS.

245

The snow timing metrics and snow variables in the remote sensing and data assimilation products (Table 1) were aggregated to  $0.125^\circ$  using the area-weighted average method. They were temporally upscaled to seasonal, annual and multi-year average scales. For a specific year, only the pixels with  $f_{sno} > 0$  were used to calculate the regional average values for  $\alpha_{sur}$ ,  $f_{sno}$ ,  $\alpha_{sno}$ ,  $S_{sno}$ , and  $R_{sno}$ , SWE and  $D_{sno}$  using the area-weighted average method.

250

## 2.5 Evaluation methods

Using the field measurements, remote sensing products, and data assimilation products as the reference, the spatio-temporal distributions of ELM snow outputs were evaluated. For spatial correlation, multiple statistical metrics were calculated for the multi-year average seasonal ELM outputs: correlation coefficient (R), Bias, relative Bias (rBias, calculated as the ratio of Bias to the average value), root mean square deviations (RMSD), and relative RMSD (rRMSD, calculated as the ratio of RMSD to the average value). This study mainly focused on winter (DJF) and spring (MAM) in the analysis, and there is little or no snow cover for the WUS in Summer (JJA) and Autumn (SON) in the ELM simulations (Figure S1). For the temporal correlation, R

255

260 between ELM and the reference datasets was calculated only for the grids where there are at least 10 snow covered days for one year excluding highly ephemeral snow.

The long-term trends of snow variables over the whole WUS were detected using the non-parametric Mann–Kendall (MK) test. However, the MK test showed that there is no significant increasing or decreasing trend ( $p$ -value  $> 0.05$ ) for all the snow variables, and thus the corresponding results are not included in the paper. The interannual variabilities (IAVs), defined as the standard deviation of the annual values, were calculated to evaluate whether ELM can capture the interannual variations of snow processes. In addition, the distributions of snow variables along the elevation gradients and forest cover for winter and spring were also analyzed.

### 3 Results

#### 270 3.1 Snow properties

##### 3.1.1 Snow cover fraction

The ELM simulated  $f_{sno}$  has heterogeneous spatial patterns in the WUS for both winter and spring (Figure 3a-b). The regional average  $f_{sno}$  is 0.41 and 0.15, respectively for ~~winter~~ and ~~spring~~. Overall, ELM also shows similar spatial patterns with both STC-MODSCAG and SPIReS for all the seasons (Figure S1). STC-MODSCAG underestimates  $f_{sno}$  over the northern regions in winter due to the known issues (Figure S1, see Section 2.3 for details). When excluding December and January with larger SZAs, STC-MODSCAG shows similar spatial distribution as SPIReS for February (Figure S2). In spring, compared to STC-MODSCAG, ELM underestimates  $f_{sno}$  over the western mountains in spring (Figure 3d). Compared to SPIReS, ELM has an overestimation over most regions in winter but performs well in spring (Figure 3g-h). Overall ELM has a high spatial correlation to both STC-MODSCAG and SPIReS, with a higher relative accuracy in winter than spring (Table 2). For temporal correlation, ELM has a low correlation in the mountainous areas with both STC-MODSCAG and SPIReS in winter (Figure 3e,i), but has a relatively high correlation with those data in spring (Figure 3f,j). The winter-spring contrast in skill is possibly due to the smaller change of  $f_{sno}$  in winter than spring.

ELM well reproduces the interannual variabilities and elevation gradients of  $f_{sno}$  (Figure 4 and S3). The IAV values are 0.055 and 0.049, respectively for ELM and SPIReS in winter, while they have closer values of 0.027, 0.029 and 0.030, respectively for ELM, STC-MODSCAG and SPIReS in spring (Figure 4a-b). ELM underestimates regional average  $f_{sno}$  in spring, and is overall consistent with STC-MODSCAG and SPIReS in terms of magnitude and IAVs. As the elevation increases,  $f_{sno}$  values in all three datasets become higher for both winter and spring (Figure 4c-d). At relatively low elevation, the  $f_{sno}$  distributions in ELM are broader than those of SPIReS in winter, while the three datasets have more consistent elevation gradients in spring. Overall, when forest cover is higher, ELM show larger differences with SPIRES for spring and STC-MODSCAG for winter

Deleted: spring

Deleted: winter

Deleted: moderate

Deleted: em

Deleted: is

Formatted: Font: Italic

Formatted: Font: Italic, Subscript

(Figure 4e-f). Same conclusions can be drawn for the regions below 42° in latitude (Figure S3). Considering the uncertainties of the remote sensing retrievals, the ELM regional average  $f_{sno}$  is within the range of STC-MODSCAG and SPIReS (Figure 5a-b and S4).

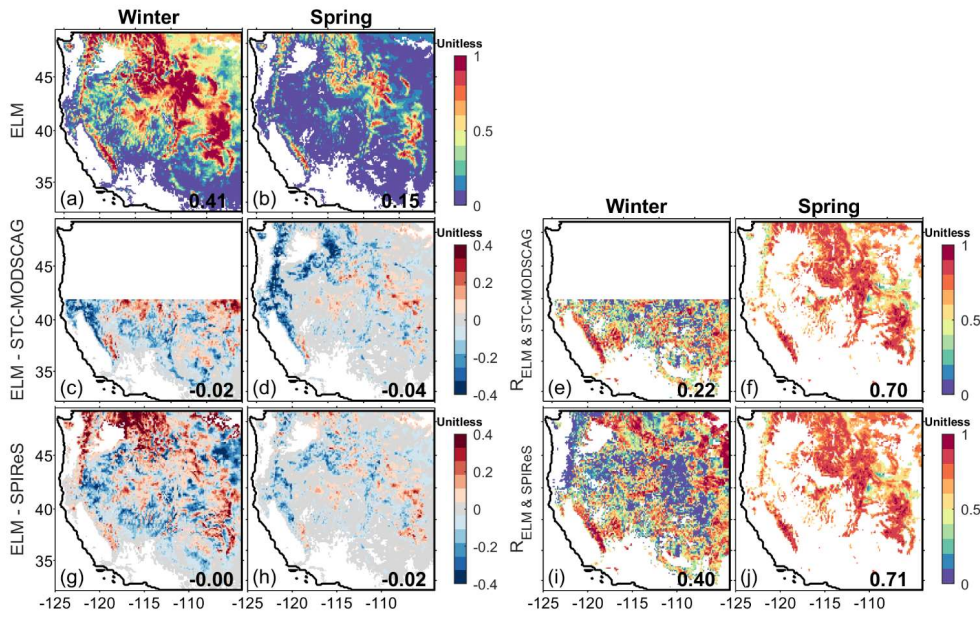


Figure 3: Spatial distributions of (a,b) snow cover fraction ( $f_{sno}$ ) in ELM and (c,d,g,h) the  $f_{sno}$  difference between ELM and two remote sensing products (i.e., STC-MODSCAG and SPIReS) and (e,f,i,j) their temporal correlations ( $R_s$ ) for different seasons: (a,c,e,g,i) winter and (b,d,f,h,j) spring. In all panels, regions with no snow cover are masked with white color. The area-weighted average values are labelled in each panel.

Formatted: Not Superscript/ Subscript

300

305

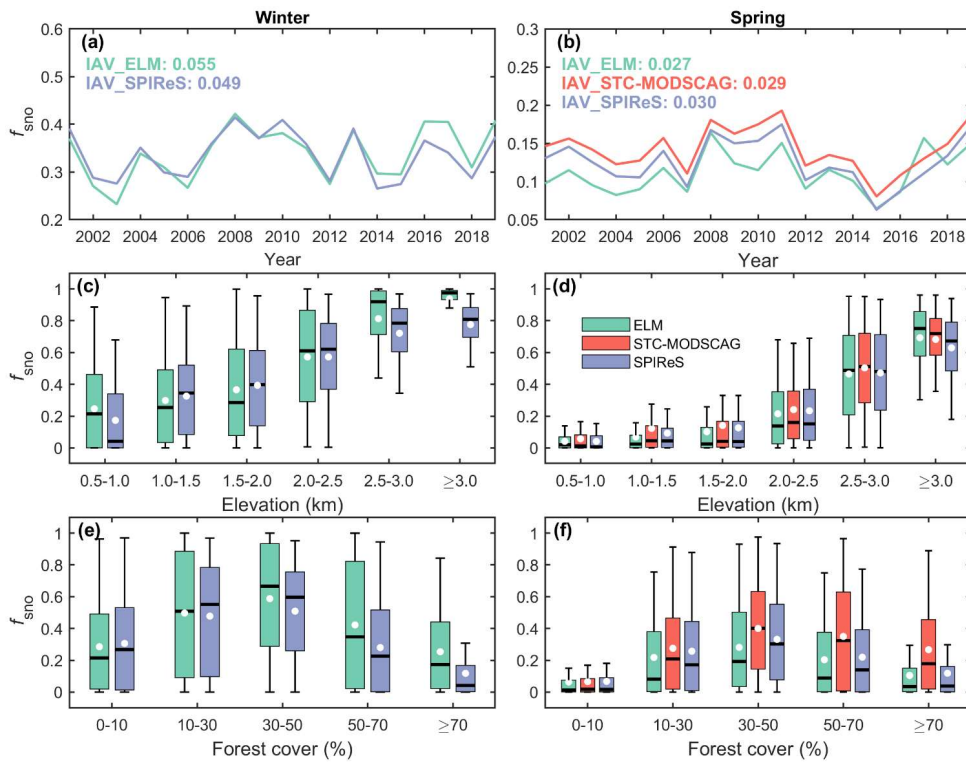
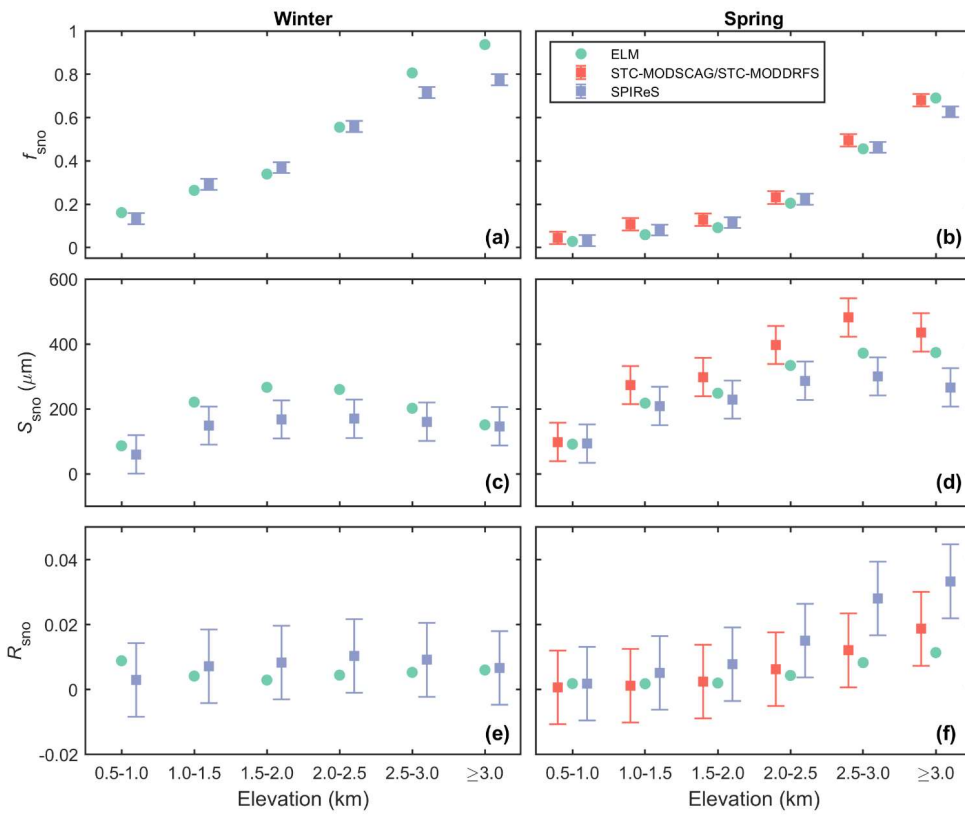


Figure 4: (a,b) Time series of regional average values, (c,d) elevation gradients, and (e,f) change with forest cover of snow cover fraction ( $f_{sno}$ ) in ELM (green), STC-MODSCAG (red), and SPIReS (blue) over the WUS. Panels (a,c,e) are for winter and panels (b,d,f) are for spring. In panels (c-f), the white dots represent the average values.

Formatted: Not Superscript/ Subscript



310

Figure 5: The area-weighted average (a,b) snow cover fraction ( $f_{sno}$ ), (c,d) snow grain size ( $S_{sno}$ ) and (e,f) snow albedo reduction ( $R_{sno}$ ) for (a,c,e) winter and (b,d,f) spring of ELM (green), STC-MODSCAG/STC-MODDRFS (red) and SPIReS (blue) over the WUS. The bar width represents the uncertainty bounds of STC-MODSCAG/STC-MODDRFS and SPIReS from (Bair et al., 2021a).

315

320

Formatted: Not Superscript/ Subscript

Formatted: Not Superscript/ Subscript

Formatted: Not Superscript/ Subscript

325

**Table 2.** Evaluation of snow properties in ELM against two remote sensing products (STC-MODSCAG/STC-MODDRFS and SPIReS) and two data assimilation products (UA and SNODAS) for winter and spring. Here, the snow properties include snow cover fraction ( $f_{sno}$ ), surface albedo ( $\alpha_{sur}$ ), snow albedo ( $\alpha_{sno}$ ), snow grain size ( $S_{sno}$ ), snow albedo reduction ( $R_{sno}$ ), snow water equivalent (SWE), and snow depth ( $D_{sno}$ ). The statistical metrics were calculated using the data over the WUS, except that those against STC-MODSCAG/STC-MODDRFS in winter were calculated using the data over the WUS regions below 42° in latitude.

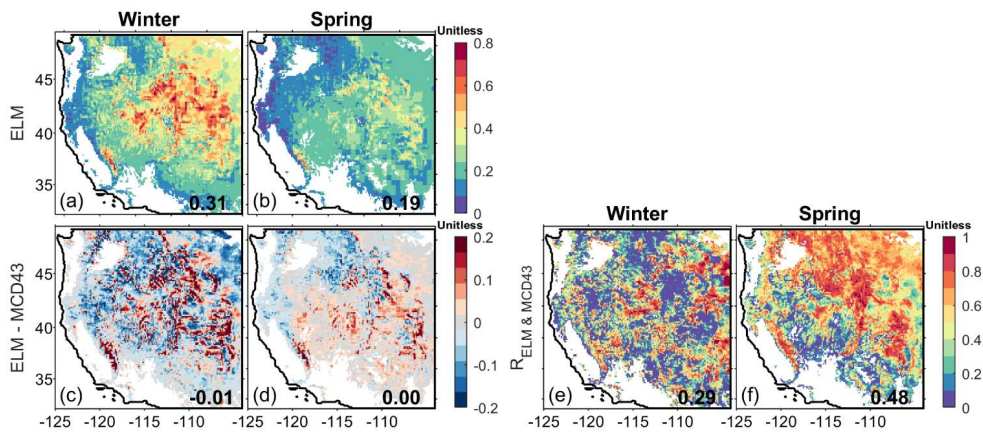
Variables	Products	Winter					Spring				
		R	Bias	rBias (%)	RMSD	rRMSD (%)	R	Bias	rBias (%)	RMSD	rRMSD (%)
$f_{sno}$	STC-MODSCAG	0.91	-0.03	-10.4	0.13	39.5	0.90	-0.04	-22.1	0.11	57.8
	SPIReS	0.86	0.00	-1.0	0.16	39.1	0.94	-0.02	-11.7	0.08	46.6
$\alpha_{sur}$	MCD43	0.77	-0.014	-4.2	0.097	30.1	0.71	0.004	2.3	0.056	29.6
$\alpha_{sno}$	STC-MODDRFS	-0.09	-0.15	-19.3	0.18	22.2	-0.27	-0.11	-14.7	0.13	17.6
	SPIReS	0.15	-0.13	-16.2	0.16	19.5	-0.09	-0.08	-11.4	0.11	14.8
$S_{sno}$ ( $\mu m$ )	STC-MODSCAG	-0.15	78.2	37.7	159.3	76.9	0.02	-71.6	-17.2	226.5	54.4
	SPIReS	0.16	93.9	50.6	120.6	65.0	0.18	31.6	10.1	128.2	40.9
$R_{sno}$	STC-MODDRFS	0.58	-0.007	-77.7	0.011	126.7	0.50	0.000	-8.7	0.006	153.1
	SPIReS	0.10	-0.002	-26.4	0.014	170.0	0.63	-0.007	-66.3	0.013	118.8
SWE(mm)	UA	0.91	-13.8	-27.8	37.1	75.1	0.90	-20.7	-35.9	62.9	108.9
	SNODAS	0.90	-10.2	-22.2	36.7	80.1	0.87	-20.4	-35.5	71.5	124.5
$D_{sno}$ (mm)	UA	0.92	-39.9	-21.6	119.2	64.5	0.91	-70.0	-43.2	172.9	106.8
	SNODAS	0.90	-48.1	-24.9	138.9	72.0	0.87	-85.7	-48.2	228.8	128.9

### 3.1.2 Surface albedo and snow albedo

330

Overall the ELM simulated  $\alpha_{sur}$  over snow cover regions shows similar spatio-temporal distribution with MCD43 for both winter and spring (Figure 6-7). Compared to MCD43, ELM overestimates  $\alpha_{sur}$  over Sierra Nevada and Rocky Mountains in winter, possibly due to the bias in snow cover (Figure 3c-d). The mean biases of ELM are -0.01 and 0.00, respectively for winter and spring. The spatial R values between ELM and MCD43 are 0.77 and 0.71, respectively for winter and spring (Table 2). ELM shows a low temporal correlation to MCD43 over most regions in winter, but has a relatively higher temporal correlation in spring especially over the mountain areas and northern regions (Figure 6e-f). ELM also has similar interannual variability especially in winter (Figure 7a-b), similar elevation gradient (Figure 7c-d) and similar distributions under different forest cover (Figure 7e-f) with MCD43. As  $f_{sno}$  increases,  $\alpha_{sur}$  in both ELM and MCD43 increases and ELM and MCD43 have similar  $\alpha_{sur}$  distributions for different elevation intervals (Figure 7g-h).

335



340

Figure 6: Spatial distributions of (a,b) surface albedo ( $\alpha_{sur}$ ) in ELM and (c,d) the  $\alpha_{sur}$  difference between ELM and MCD43 and (e,f) their temporal correlations ( $R$ s) for different seasons: (a,c,e) winter and (b,d,f) spring. In all panels, the regions with no snow cover are masked with white color. The area-weighted average values are labelled in each figure.

Formatted: Not Superscript/ Subscript

345



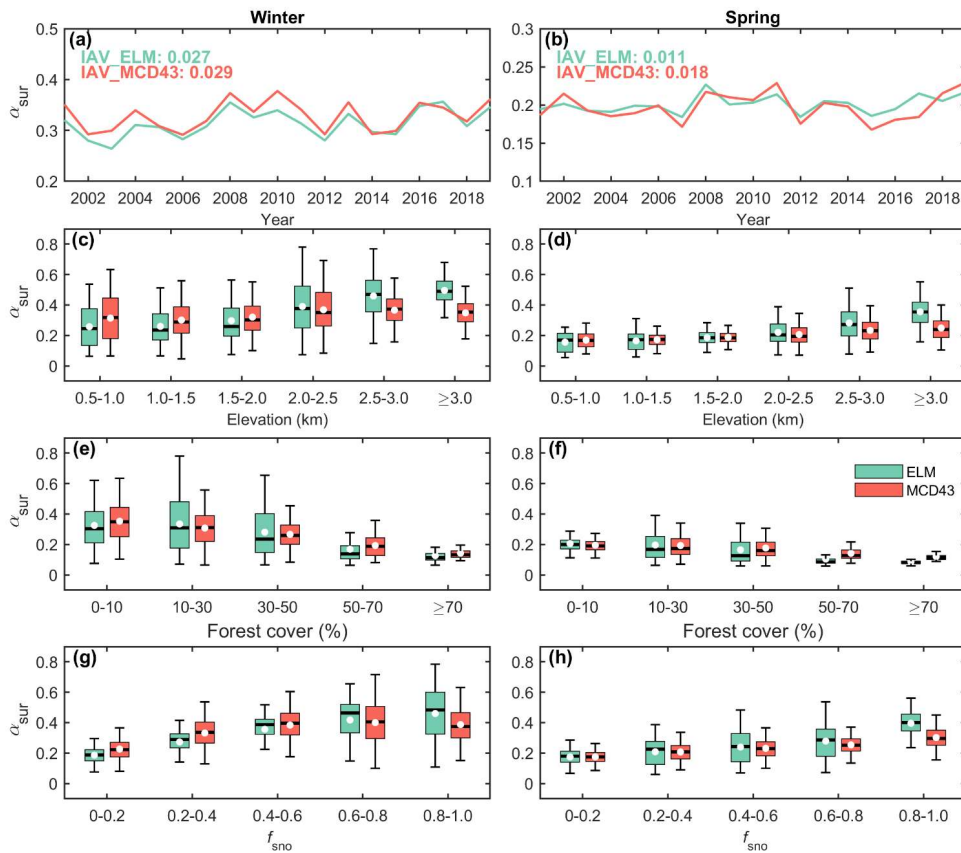
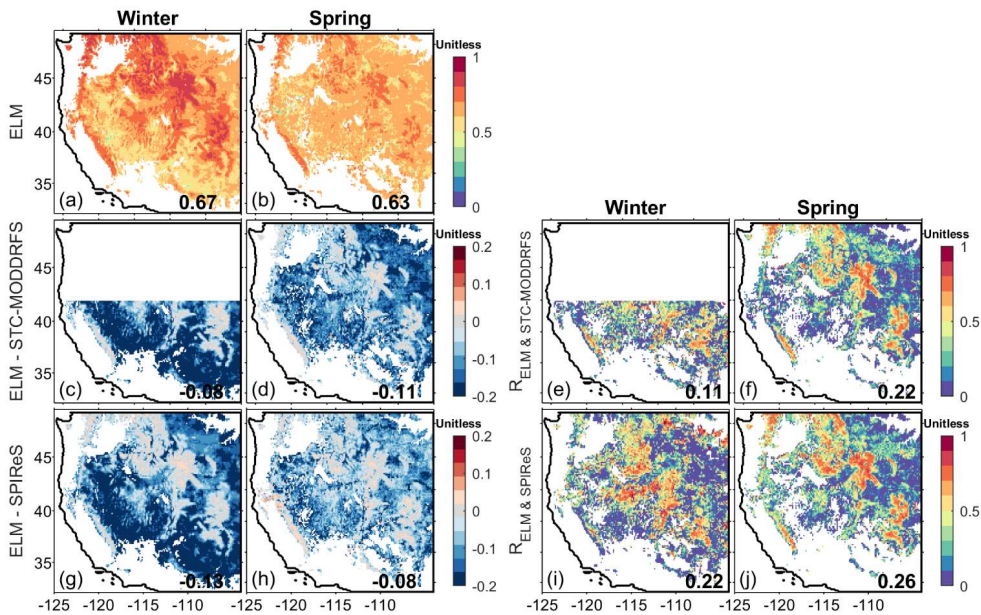


Figure 7: (a,b) Time series of regional average values, (c,d) elevation gradients, (e-f) change with forest cover and (g,h) statistical distributions of surface albedo ( $\alpha_{sur}$ ) under different snow cover conditions in ELM (green) and MCD43 (red) for different seasons: (a,c,e,g) winter and (b,d,f,h) spring over the WUS. The IAV values of different datasets are shown in (a,b). In panels (c-h), the white dots represent the average values.

Formatted: Not Superscript/ Subscript

355 For  $\alpha_{\text{snow}}$ , ELM overall shows good consistencies with STC-MODDRFS and SPIReS over mountainous regions, but has an underestimation over other regions (Figure 8). Against STC-MODDRFS, the mean biases of ELM are -0.08 for winter over the WUS regions below 42° in latitude and -0.11 for spring over the WUS. Against SPIReS, the mean biases of ELM are -0.13 and -0.08, respectively for winter and spring. The spatial R values between ELM and two remote sensing products are lower than 0.30 (Table 2). ELM shows a low temporal correlation to two remote sensing products over most regions, and has a relatively higher temporal correlation over the Rocky Mountains (Figure 8e-f). Larger inconsistencies between ELM and two remote sensing products are founded in terms of interannual variations, elevation gradients and change with forest cover (Figure 9 and S5).



365 **Figure 8:** Spatial distributions of (a,b) **snow albedo ( $\alpha_{\text{snow}}$ )** in ELM and (c,d,g,h) the  $\alpha_{\text{snow}}$  difference between ELM and two remote sensing products (i.e., STC-MODDRFS and SPIReS) and (e,f,i,j) their temporal correlations (Rs) for different seasons: (a,c,e,g,i) winter and (b,d,f,h,j) spring. In all panels, regions with no snow cover are masked with white color. The area-weighted average values are labelled in each panel.

Formatted: Not Superscript/ Subscript

370

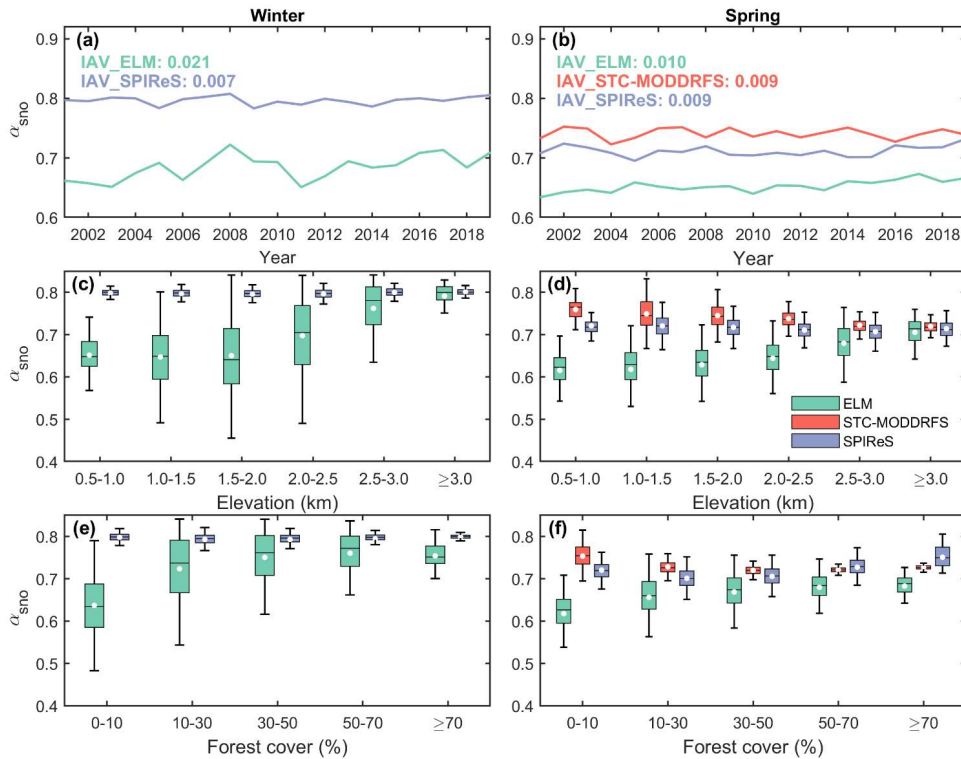


Figure 9: (a,b) Time series of regional average values, (c,d) elevation gradients, and (e,f) change with forest cover of snow albedo ( $\alpha_{sno}$ ) in ELM (green), STC-MODSCAG (red), and SPIReS (blue) over the WUS. Panels (a,c,e) are for winter and panels (b,d,f) are for spring. In panels (c-f), the white dots represent the average values.

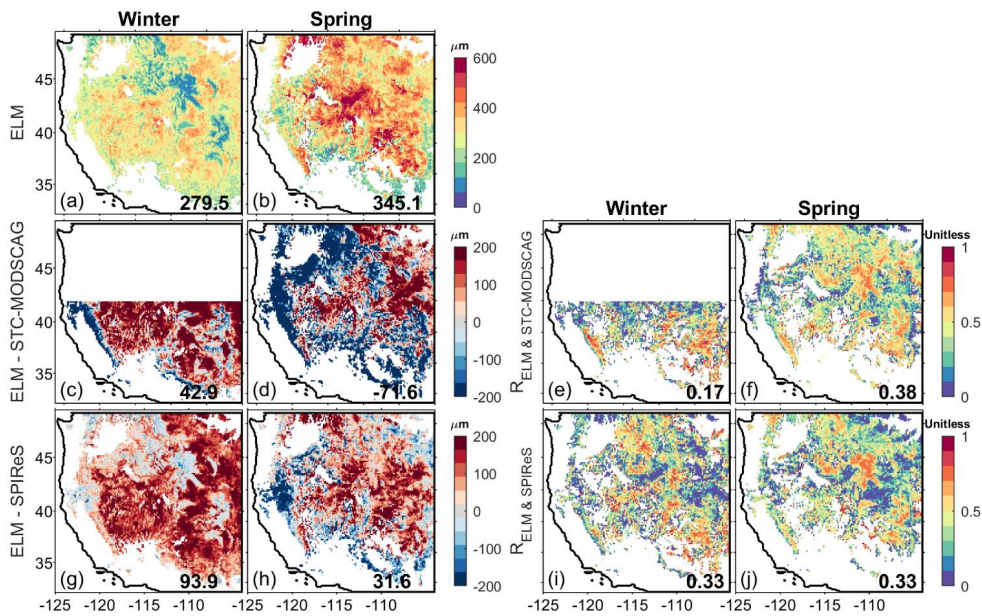
Formatted: Not Superscript/ Subscript

375

### 3.1.3 Snow grain size and snow albedo reduction

There are large differences in the magnitudes and spatio-temporal patterns of  $S_{sno}$  between ELM, STC-MODSCAG/SPIReS (Figure 10 and 11). ELM has larger  $S_{sno}$  in spring than in winter (Figure 10a-b), with large negative biases over the western mountains and positive biases over the central and eastern regions compared to STC-MODSCAG with the mean biases of -71.6  $\mu m$  for spring (Figure 10c-d). ELM has positive biases over most regions compared to SPIReS, with the mean bias of 93.9  $\mu m$  and 31.6  $\mu m$ , for winter and spring, respectively (Figure 10g-h).  $S_{sno}$  in ELM has a poor spatial correlation to the two MODIS products for both winter and spring (Table 2). ELM has varying temporal correlations with STC-MODSCAG and

385 SPIReS for both seasons with a mean value of around 0.3 (Figure 10 e-f and i-j). ELM has a similar interannual variability to SPIReS (Figure S6a-b and S7a-b). As the elevation increases, ELM and SPIReS have decreasing  $S_{\text{ sno}}$  in winter, but there is no obvious and comparable pattern along the elevation in spring (Figure S6c-d and S7c-d). As forest cover increases, the three data show larger differences for spring (Figure S6f and S7f). Considering the uncertainties of  $S_{\text{ sno}}$  in the remote sensing products, the regional average  $S_{\text{ sno}}$  is within the range between STC-MODSCAG and SPIReS (Figure 5c-d and S4).

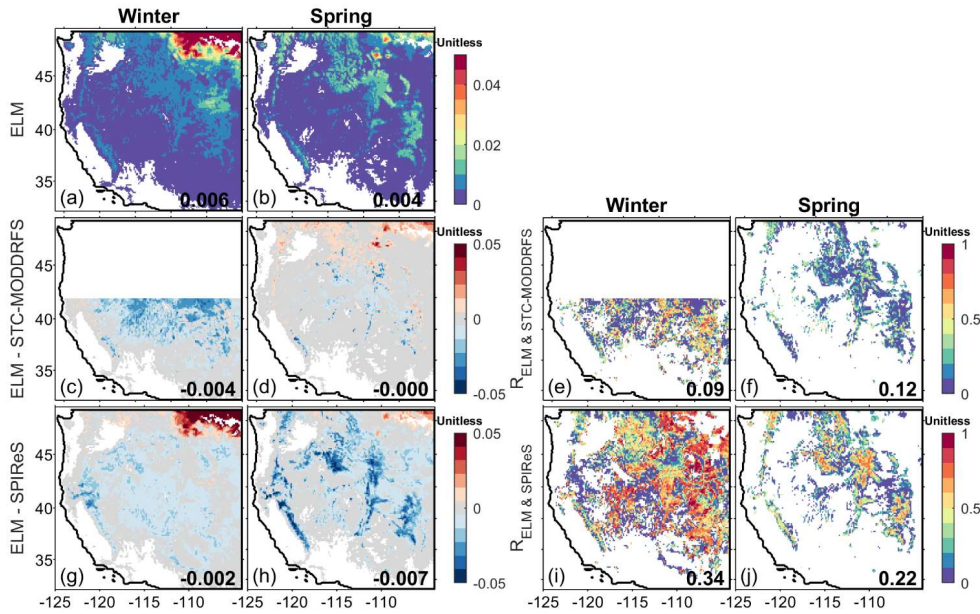


390 **Figure 10:** Spatial distributions of (a,b) snow grain size ( $S_{\text{ sno}}$ ) in ELM and (c,d,g,h) the  $S_{\text{ sno}}$  difference between ELM and two remote sensing products (i.e., STC-MODSCAG and SPIReS) and (e,f,i,j) their temporal correlations ( $R_s$ ) for different seasons: (a,c,e,g,i) winter and (b,d,f,h,j) spring. In all panels, regions with no snow cover are masked with white color. The area-weighted average values are labelled in each panel.

395 There are also large spatial biases and low temporal correlations of  $R_{\text{ sno}}$  between ELM, STC-MODDRFS and SPIReS (Figure 11 and S4). In ELM,  $R_{\text{ sno}}$  shows extremely high values in the northeastern corner for winter (Figure 11a), due to the large aerosol deposition in the aerosol deposition data (see Section 2.2). Apart from the northeastern corner, ELM is more similar to SPIReS in winter (Figure 11c-g). For spring, ELM is more similar to STC-MODSCAG, and has large negative biases relative to SPIReS (Figure 11d-h). ELM has higher temporal correlations with both remote sensing products in winter than spring, and shows higher correlations with SPIReS than STC-MODDRFS in spring (Figure 11 e-f and i-j). For interannual

Formatted: Not Superscript/ Subscript

400 variability, ELM is more identical to STC-MODSCAG in spring (Figure S8a-b and S9a-b) than SPIRES. However, note that ELM simulations in the study used climatological monthly aerosol deposition data, so they are not comparable to the remote sensing data in any specific year. In spring,  $R_{sno}$  in all the three datasets shows an increasing trend with elevation (Figure S8d and S9d). All the three data show larger differences across different forest cover (Figure S8e-f and S9e-f). Overall,  $R_{sno}$  is within the uncertainty ranges of STC-MODSCAG and SPIReS (Figure 5e-f and S4).



405 **Figure 11: Spatial distributions of (a,b) snow albedo reduction ( $R_{sno}$ ) in ELM and (c,d,g,h) the  $R_{sno}$  difference between ELM and two remote sensing products (i.e., STC-MODDRFS and SPIReS) and (e,f,i,j) their temporal correlations ( $R_s$ ) for different seasons: (a,c,e,g,i) winter and (b,d,f,h,j) spring. In all panels, regions with no snow cover are masked with white color. The area-weighted average values are labelled in each panel.**

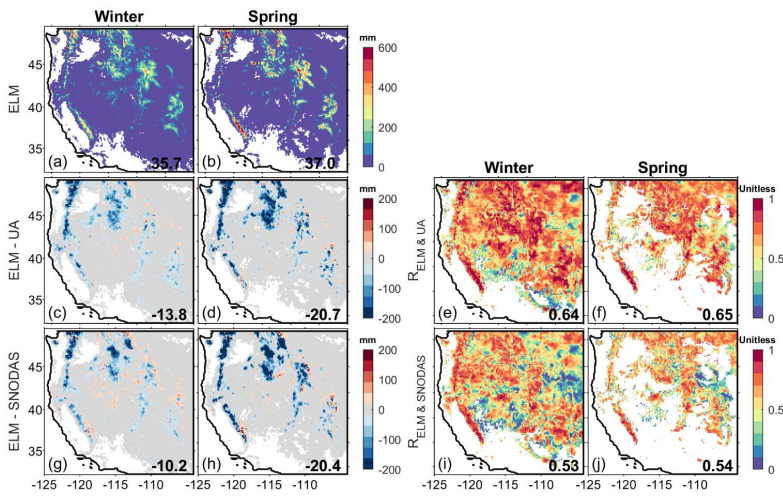
410

Formatted: Not Superscript/ Subscript

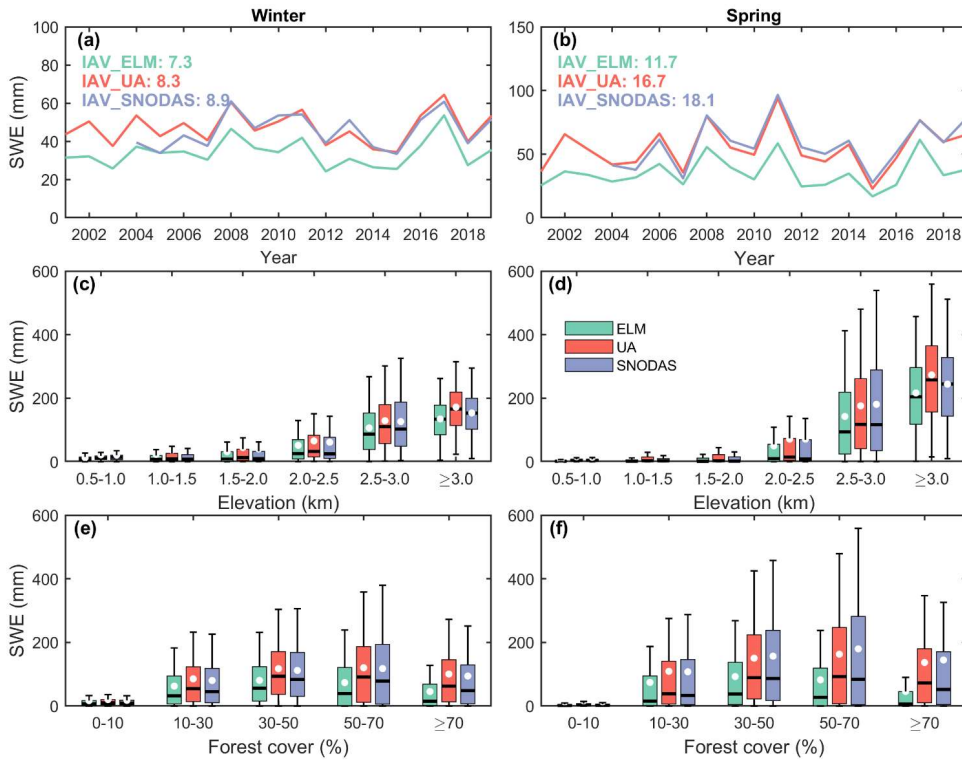
### 3.1.4 Snow water equivalent and snow depth

ELM shows higher SWE values over the mountainous areas (Figure 12a-b), but also has larger underestimations over the mountainous areas, compared to both UA and SNODAS in both winter and spring (Figure 12c-d,g-h). Against UA and SNODAS, ELM has a mean bias of -20.7 mm (35.9%) and -20.4 mm (-35.5%), respectively in spring, while those in winter are -13.8 mm (-27.8%) and -10.2 mm (-22.2%), respectively. Overall ELM has a high spatial similarity with both UA and

SNODAS, and ELM has higher spatial consistency with UA than SNODAS in spring (Table 2). For temporal correlation (Figure 12e-f and i-j), ELM has high mean R values of 0.64 and 0.65 for winter and spring, compared to UA, and the R values are 0.53 and 0.54, respectively compared to SNODAS. ELM captures the interannual variabilities and elevation gradients of SWE well, but some underestimations of the regional average values are observed (Figure 13a-d). In winter, ELM has similar IAV values to UA and SNODAS, but has a lower value of 11.7 mm compared to UA (16.7 mm) and SNODAS (18.1 mm) in spring. Overall, ELM shows larger differences from UA and SNODAS, when there is a higher forest cover, especially for spring (Figure 13e-f).  $D_{\text{SNO}}$  shows very similar results to SWE (Figure S10-S11).



425 **Figure 12:** Spatial distributions of (a,b) **snow water equivalent (SWE)** in ELM and (c,d,g,h) the SWE difference between ELM and two data assimilation products (i.e., UA and SNODAS) and (e,f,i,j) their temporal correlations (Rs) for different seasons: (a,c,e,g,i) winter and (b,d,f,h,j) spring. In all panels, regions with no snow cover are masked with white color. The area-weighted average values are labelled in each panel.



430

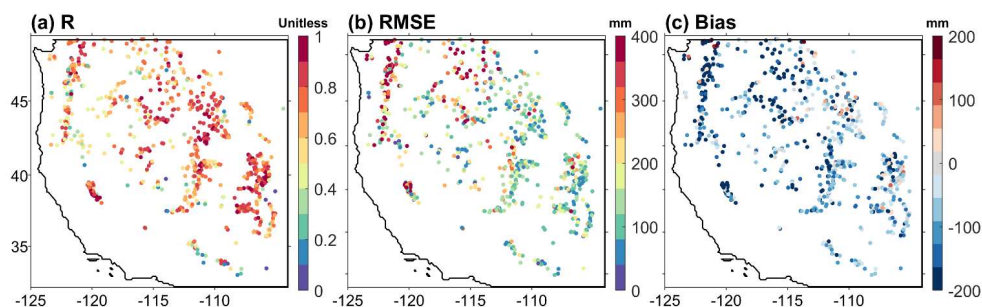
**Figure 13:** (a,b) Time series of regional average values, (c,d) elevation gradients, and (e,f) change with forest cover of snow water equivalent (SWE), in ELM (green), UA (red), and SNODAS (blue) over the WUS. Panels (a,c,e) are for winter and panels (b,d,f) are for spring. In panels (e-f), the white dots represent the average values.

Deleted: SWE

435

Compared to SNOTEL, UA presents a high correlation across sites (Figure 14), with the mean R values are 0.69. The mean RMSE of ELM is 189.6 mm, the Cascades Range shows larger RMSE values than other regions. ELM underestimates SWE nearly across all sites, with the mean biases of -122.7 mm. The biases of the meteorological forcing in NLDAS-2 and the spatial-scale mismatch between the point-scale SNOTEL and the grid-level ELM simulations can contribute to uncertainty in the comparison.

440



445 **Figure 14. Spatial distribution of statistical metrics of ELM performance against the field snow water equivalent (SWE) data from SNOTEL: (a) R, (b) Bias, and (c) RMSE.**

Deleted: SNOTEL

### 3.2 Snow phenology

ELM well reproduces the snow phenology, compared to two remote sensing products (Figure 15-16). As expected, over mountainous areas, ELM shows earlier snow onset, later depletion and thus longer snow duration compared to flat and generally lower elevation areas (first column of Figure 15). Compared to STC-MODSCAG and SPIReS (second and third columns of Figure 15), ELM shows later Accumulation\_onset\_date over the whole WUS with a mean bias of +17.3 and +12.4 days, respectively, which may be caused by the bias in the meteorological forcing data of NLDAS-2 and the simple parameterizations of the partitioning of precipitation into rainfall or snowfall; and has later Depletion\_onset\_date, but earlier Midpoint\_date and End\_date. For instance, ELM melts off earlier with a mean bias of -35.5 and -26.8 days, respectively than STC-MODSCAG and SPIReS, suggesting that ELM has higher snowmelt rate. Thus ELM has a short snow duration with a mean bias of -52.9 and -39.5 days, respectively compared to the two remote sensing products. The large biases exist in the western mountains for End\_date (Figure 15k-l and n-o). Overall snow phenology in ELM has a high spatial correlation with that of the remote sensing products (Table 3). Although ELM overestimates Accumulation\_onset\_date and Depletion\_onset\_date and underestimates Midpoint\_date, End\_date and Duration, ELM well captures the IAVs of all five snow phenology metrics (first column of Figure 16), As the elevation increases, Accumulation\_onset\_date decreases but the other four metrics increases for all the three datasets (second column of Figure 16). ELM also has similar magnitudes and distributions for each elevation interval compared to the remote sensing products, while the three data show larger and larger differences with the increase of forest cover (third column of Figure 16).

450

455

460



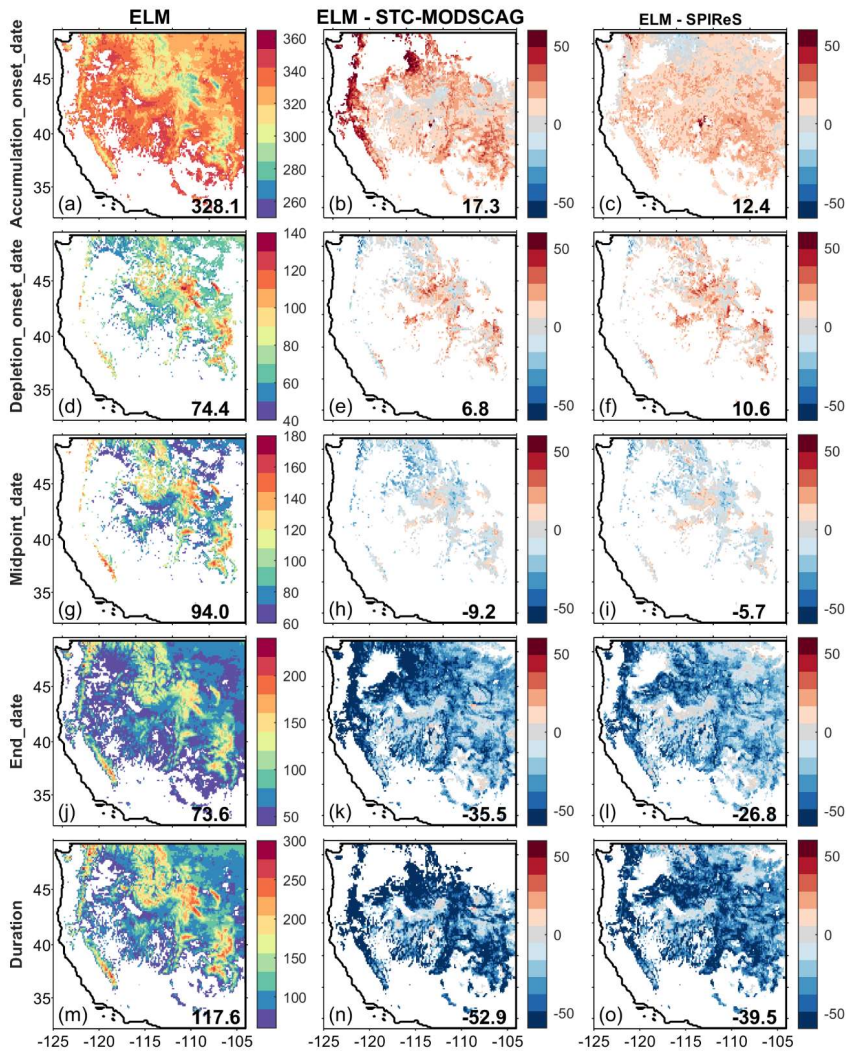
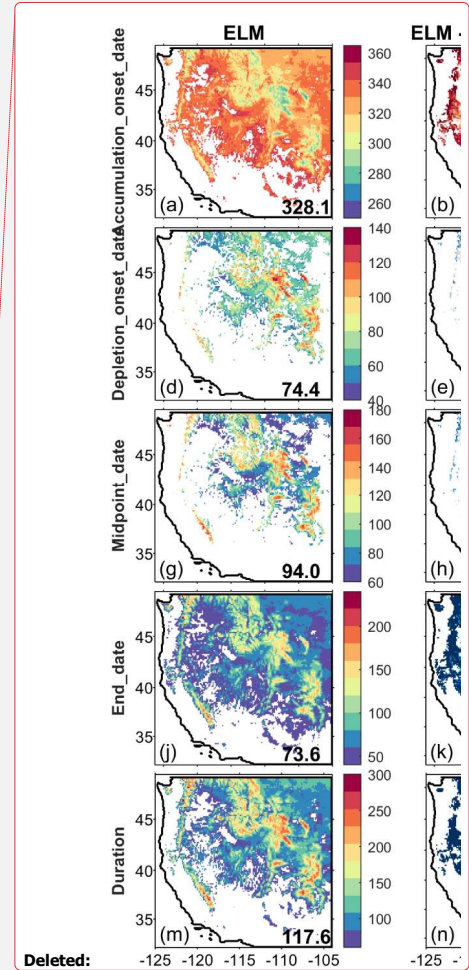


Figure 15: Spatial distributions of (a,d,g,j,m) snow timing and (b-c,e-f,h-i,k-l,n-o) the snow timing difference between ELM and two remote sensing products (i.e., STC-MODSCAG and SPIReS). Five snow timing metrics are included: (a-c)



470 Accumulation\_onset\_date, (d-f) Depletion\_onset\_date, (g-i) Midpoint\_date, (j-l) End\_date, and (m-o) Duration. The regions with no successful retrievals of snow timing are masked with white color. The area-weighted average values are labelled in each figure.

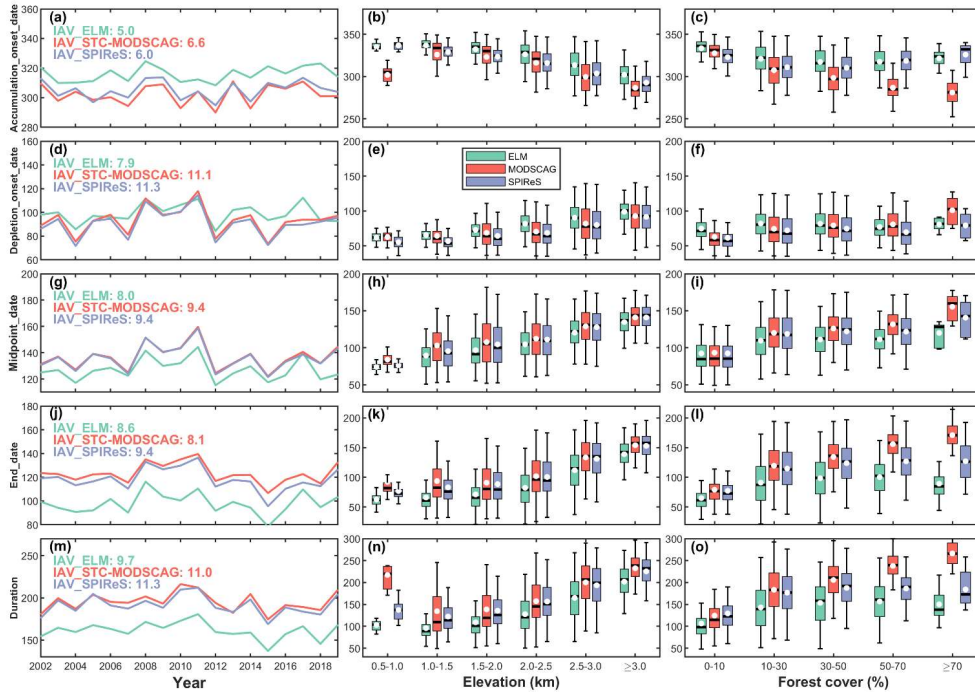


Figure 16: (a,d,g,j,m) Time series of regional average values, (b,e,h,k,n) elevation gradients and (c,f,i,l,o) change with forest cover of snow timing in ELM and two remote sensing products (i.e., STC-MODSCAG and SPIReS) for different metrics: (a-c) Accumulation\_onset\_date, (d-f) Depletion\_onset\_date, (g-i) Midpoint\_date, (j-l) End\_date, and (m-o) Duration over the WUS. The IAV values of different data are shown in (a,d,g,j,m). In panels (b-c,e-f,h-i,k-l,n-o), the white dots represent the average values.

475

Table 3. Evaluation of snow phenology in ELM against STC-MODSCAG and SPIReS.

Products	Variables	R	Bias	rBias(%)	RMSD	rRMSD(%)
STC-MODSCAG	Accumulation_onset_date	0.83	17.3	5.6	22.0	7.1
	Depletion_onset_date	0.77	6.8	9.4	15.6	21.6
	Midpoint_date	0.91	-9.2	-8.1	15.2	13.4
	End_date	0.81	-35.5	-32.1	42.9	38.9
	Duration	0.84	-52.9	-30.0	63.6	36.1
SPIReS	Accumulation_onset_date	0.86	12.4	3.9	14.6	4.6
	Depletion_onset_date	0.82	10.6	15.7	16.0	23.7
	Midpoint_date	0.93	-5.7	-5.3	12.6	11.7
	End_date	0.89	-26.8	-26.4	32.2	31.7
	Duration	0.90	-39.5	-25.0	45.2	28.5

Formatted Table

480

#### 4 Discussion

The evaluation results suggest an overall good performance of ELM in simulating snow properties, while some biases and uncertainties still exist, especially over mountainous areas with dense forest cover. Compared to the remote sensing products, ELM well reproduces the spatio-temporal pattern, interannual variabilities and elevation gradients of  $f_{sno}$  and  $\alpha_{sur}$  (Figure 3-6), but large biases exist in Rocky Mountains and Sierra Nevada for  $\alpha_{sur}$  (Figure 3 and 5). There are still large spatio-temporal inconsistencies of  $\alpha_{sno}$ ,  $S_{sno}$  and  $R_{sno}$  among ELM, STC-MODSCAG and SPIReS (Figure 8-11 and S6-S9). The underestimation of SWE and snow depth by ELM is comparable to the reported results based on CLM4 (Toure et al., 2018; Toure et al., 2016). The NLDAS-2 data used in the ELM simulations has large negative precipitation biases and high air temperature uncertainties over high-elevation terrain compared to both field measurements and PRISM over the WUS (Henn et al., 2018; O'Neill et al., 2021; Pan et al., 2003; Schreiner-McGraw and Ajami, 2022), which can partly explain the negative SWE bias in ELM. Besides, a 0.125° grid may have high sub-grid variabilities of snow especially in mountainous areas (Meromy et al., 2013) and SNOTEL stations in mountains located on flat surface may not capture the sub-grid spatial variabilities (Toure et al., 2016). Overall ELM can well track the snow phenology, but shows a late start of snow accumulation in winter which is consistent with the underestimation of SWE and may be related to the precipitation and air temperature bias in the meteorological forcing data of NLDAS-2 and the partitioning of precipitation into rainfall or snowfall in ELM. An earlier snowmelt is also found in ELM, and there are similar issues in other LSMs, e.g., CLM4 (Toure et al., 2018) and Noah with Multi-Parameterization (Noah-MP)

485

490

495

Deleted: 10

(Xiao et al., 2021). Note that in this study, we defined snow season and phenology based on  $f_{sno}$  rather than SWE, and thus how ELM captures the date of peak snowpack, snowmelt timing, and snowmelt rate needs further investigation based on SWE.

Formatted: Font: Italic

Formatted: Subscript

Deleted: can

Deleted: and

500 There are still some uncertainties in the benchmarking datasets used in this study. First, the MCD43 product performs well in representing  $\alpha_{sur}$  during snow cover periods, but may have poor performance for ephemeral snow due to its assumptions of stable land surface status within 16 days (Wang et al., 2012; Wang et al., 2014). Besides, frequent cloud cover and a lack of explicit representations of topographic effects can affect the accuracy of the MCD43 product over mountainous areas (Hao et al., 2019; Hao et al., 2018a; Hao et al., 2018b). There are some inconsistencies between STC-MODSCAG and SPIReS (Figure 3-4), due to the different algorithms and data processing (e.g., interpolation and filtering). Although the physically-based STC-MODSCAG and SPIReS provide higher quality unbiased  $f_{sno}$  estimates than the MOD10A1 snow product based on empirical algorithms against field measurements across different forest cover, snow cover, snow climate and viewing angles (Bair et al., 2021c; Rittger et al., 2013; Stilling et al., 2022), the issues of reflectance errors, one to many problems intrinsic to spectral unmixing, cloud contamination, topographic shadows, sun-sensor geometric effects, and the impacts of forest cover can still affect their reliabilities (Bair et al., 2021b; Raleigh et al., 2013; Stilling et al., 2022). These issues can also affect the accuracy of extracted snow phenology (Section 2.4). Uncertainties of  $S_{sno}$  and  $R_{sno}$  in STC-MODSCAG/STC-MODDRFS and SPIReS exist (Bair et al., 2019). In summary, the heterogeneity of snow within pixels, relatively low spectral resolution, and interference from clouds limits the diagnostic capabilities of snow properties from MODIS. Ongoing and upcoming hyperspectral remote sensing missions (e.g., the recently launched Environmental Mapping and Analysis Program (<https://www.enmap.org/>) and NASA's Surface Biology and Geology (Cawse-Nicholson et al., 2021) will enhance the abilities of remote sensing to monitor snow properties. There are also some discrepancies between UA and SNODAS (Figure 11-12). The uncertainties in the PRISM data over complex terrain (Henn et al., 2018) may degrade the performance of UA. Compared to ground survey data, SWE in SNODAS over alpine areas has degraded performance due to the neglect of wind redistribution of snow (Clow et al., 2012). Compared to GPS interferometric reflectometry snow depth data, SNODAS still needs to be improved over complex terrain and areas with high vegetation heterogeneities (Boniface et al., 2015). The independent comparisons also have shown the underestimations and overestimations of SNODAS (Bair et al., 2016; Dozier, 2011; Dozier et al., 2016). Developing reliable benchmarking datasets for advancing snow modeling is still challenging but necessary (Ménard et al., 2019).

525 There is significant room for improving simulations of snow processes in ELM, ranging from the input forcing data to parameter settings and model structure. Meteorological forcing data has been demonstrated to have large impacts on snow simulations (Günther et al., 2019). The NLDAS-2 forcing data was used to drive ELM in the study, which is rather coarse to represent the sub-grid heterogeneity of precipitation over mountainous areas (Tesfa et al., 2020). Although NLDAS-2 has many improvements compared to NLDAS-1 (Xia et al., 2012), there are still some spatio-temporal discontinuities in the precipitation of NLDAS-2 (Ferguson and Mocko, 2017; Xia et al., 2019). Besides, there are still some documented systematic

535 precipitation and air temperature biases in NLDAS-2 especially over mountainous areas (Henn et al., 2018; O'Neill et al.,  
 2021; Pan et al., 2003). The  $1.9^{\circ} \times 2.5^{\circ}$  climatological aerosol deposition data used in the ELM simulations is too coarse to  
 capture the fine-scale spatial variations of BC and dust, which limits the accuracy of simulated  $R_{sno}$  and thus  $\alpha_{sno}$ . The model  
 structures used in different LSMs have different complexities, assumptions and simplifications (Lee et al., 2021; Magnusson  
 et al., 2015). In ELM, some snow processes are modelled empirically, and some parameters were set empirically or from the  
 literature, which may contain large uncertainties. For instance, in the ELM snow albedo model, spherical snow grain shape,  
 540 internal mixing of BC-snow and external mixing of dust-snow are default settings, which may be oversimplified (Hao et al.,  
 2022) and can potentially affect the accuracy of  $R_{sno}$  and  $\alpha_{sno}$ . The large uncertainty of  $S_{sno}$  is relevant to the unrealistic snow  
 aging representations in ELM (Qian et al., 2014), which can further affect  $\alpha_{sno}$ . The bias of  $\alpha_{sno}$  can further affect the accuracy  
 of absorbed energy by snow and  $\alpha_{sur}$  (contains the contributions from snow and non-snow vegetation/soil), and thus the change  
 of SWE and  $D_{sno}$ . The uncertainties of SWE can further propagate to  $f_{sno}$ , because ELM uses SWE to estimate  $f_{sno}$  (Swenson  
 and Lawrence, 2012). In the snow cover parameterization of ELM, snow accumulation ratio and snowmelt shape factor are  
 empirically set as fixed values without spatio-temporal variations (Swenson and Lawrence, 2012), which can also affect the  
 accuracy of  $f_{sno}$ . The snow cover over complex terrain was simply parameterized as a function of the standard deviation of  
 elevation, which may explain the large biases of  $f_{sno}$  (Figure 3) over mountainous areas (Swenson and Lawrence, 2012). All of  
 these uncertainties contribute to the bias of snow phenology in ELM (Section 3.2). Besides, some important processes are  
 550 missing in ELM, such as the snow redistribution and sublimation by blowing snow (Xie et al., 2019), and the interaction  
 between vegetation and snow, which possibly lead to the degraded performance of ELM (Section 3). Developing accurate  
 forcing data, improving/choosing suitable snow models/parameterizations, and calibrating/optimizing model parameters are  
 all important for accurate simulations of snow processes in LSMs.

555 Further studies are needed to conduct systematic diagnosis and attributions of ELM simulation biases and evaluate the ability  
 of ELM in capturing the long-term trends and climate effects of snow. Attributing the snow simulation biases to the specific  
 parameterizations or processes is still challenging but necessary to identify and locate the major sources of errors. Because the  
 snow processes are coupled and impacted by each other, further sensitivity analysis and numerical experiments varying factors  
 one at a time are needed. An international coordinated project of the intercomparison of snow schemes in Earth system models,  
 560 ESM-SNOWMIP, provides a good opportunity for ELM to identify crucial processes leading to large biases in simulated snow  
 and compare with other LSMs from local to global scales (Krinner et al., 2018; Menard et al., 2021). In this study, we found  
 no significant increasing or decreasing trend of snow from 2001 to 2019 over the WUS for both ELM and other benchmarking  
 datasets. However, 19 years are not long enough to characterize long-term trend of snow and analysis was not performed on  
 discrete river basin or elevation subsets that may be experiencing change nor during the JJA time period. To reduce the impacts  
 565 of the uncertainties from atmospheric forcing, this study focused on evaluating the offline ELM simulations forced by NLDAS-  
 2, since errors in both simulated temperature and precipitation have been recognized as the main drivers of snowpack errors  
 in E3SM (Brunke et al., 2021). However, snow-related land-atmosphere interactions are neglected in the land-only simulations.

- Deleted: simulating
- Moved (insertion) [1]
- Deleted: ur
- Field Code Changed
- Deleted: s
- Deleted: in ELM
- Deleted: SNICAR-AD
- Deleted: s of ELM
- Deleted: were set by default
- Deleted: , which
- Moved (insertion) [2]
- Deleted: .
- Formatted: Not Superscript/ Subscript
- Formatted: Not Superscript/ Subscript
- Deleted: be
- Deleted: d
- Formatted: Font: Italic
- Formatted: Subscript
- Deleted: i
- Deleted: In the SNICAR-AD snow albedo models of ELM, spherical snow grain shape, internal mixing of BC-snow and external mixing of dust-snow were set by default, which may be oversimplified (Hao et al., 2022). Further efforts are needed to calibrate these parameters using remote sensing or data assimilation products. The model structures used in different LSMs have different complexities, assumptions and simplifications (Lee et al., 2021; Magnusson et al., 2015). Some snow processes are modelled empirically, e.g.,
- Moved up [1]: The model structures used in different LSMs have different complexities, assumptions and simplifications (Lee et al., 2021; Magnusson et al., 2015).
- Deleted: t
- Moved up [2]: The large uncertainty of  $S_{sno}$  is relevant to the unrealistic snow aging representations in ELM (Qian et al., 2014).
- Deleted: S
- Deleted: ed
- Deleted: T
- Deleted: only
- Deleted: evaluated
- Deleted: land-only
- Deleted: considering that both
- Deleted: io
- Deleted: the

Additional studies are required to evaluate E3SM's ability to capture the impacts of snow on regional climate by performing coupled E3SM simulations with active land and atmosphere model.

- Deleted: but
- Deleted: Hhow
- Deleted: L
- Deleted: can
- Deleted: needs
- Deleted: further investigations
- Deleted:

## 5 Conclusions

Snow over the WUS plays an important role in regional climate and hydrological and ecological systems as well as human society. This study systematically evaluated the snow properties (including  $\alpha_{sur}$ ,  $\alpha_{sno}$ ,  $f_{sno}$ ,  $S_{sno}$ ,  $R_{sno}$ , SWE and  $D_{sno}$ ) and snow phenology (including four snow dates and one snow duration) simulated by ELM using SNOTEL field measurements, MODIS remote sensing products and two data assimilation products. Overall, the ELM snow simulations agree well with the benchmarking datasets in terms of spatio-temporal distributions, interannual variabilities and elevation gradients for different snow properties. However, ELM has large biases of  $f_{sno}$  for dense forest cover and  $\alpha_{sur}$  in the Rocky Mountains and Sierra Nevada, while underestimating SWE and  $D_{sno}$ , especially over mountainous areas with dense forest cover for both winter and spring. The ELM simulations shows large inconsistencies with the remote sensing retrievals of  $\alpha_{sno}$ ,  $S_{sno}$  and  $R_{sno}$ . Compared to SNOTEL, ELM has larger negative biases of SWE, probably because there are some systematic biases of precipitation and air temperature in NLDAS-2. Besides, there is a large spatial-scale mismatch between point-scale field measurements and grid-level simulations, which can contribute to the large biases of ELM. There are also some inconsistencies of snow phenology between ELM and remote sensing products with ELM showing later snow onset, earlier depletion and shorter snow duration, consistent with the underestimation of SWE. This study documents the ELM performance in simulating snow processes and demonstrates the necessity for further improving the snow properties and snow phenology represented in LSMs. Further efforts are needed to improve the accuracy of snow properties, especially  $S_{sno}$  and  $R_{sno}$  in both ELM simulations and remote sensing retrievals and resolve the early melt-off of snow in spring and underestimations of SWE in ELM especially over the complex terrain of the WUS.

## 625 Appendix A

**Table A1. The acronyms and symbols used in the study.**

Category	Abbreviation or symbol	Explanation
Snow property	$\alpha_{sur}$	Surface albedo
	$\alpha_{sno}$	Snow albedo
	$f_{sno}$	Snow cover fraction
	$S_{sno}$	Snow grain size
	$R_{sno}$	Snow albedo reduction
	SWE	Snow water equivalent

	$D_{\text{snow}}$	Snow depth
Snow phenology	Accumulation_onset_date	Snow accumulation onset date
	Depletion_onset_date	Snow cover depletion onset date
	Midpoint_date	Snow cover depletion midpoint date
	End_date	Snow end date
	Duration	Snow duration days
Model name	E3SM	Energy Exascale Earth System Model
	ELM	E3SM land model
	LSM	Land surface model
	CLASS	Canadian Land Surface Scheme
	CLM	Community Land Model
	SNICAR	the Snow, Ice, and Aerosol Radiative model
	SNICAR-AD	SNICAR with the delta-Eddington adding-doubling radiative transfer solver
	PRISM	Parameter-elevation Regressions on Independent Slopes Model
Noah-MP	Noah with Multi-parameterization	
Dataset name	MODIS	Moderate Resolution Imaging Spectroradiometer
	BCQC	Bias Correction and Quality Control data
	SNOTEL	Snow Telemetry stations
	STC-MODSCAG/STC-MODDRFS	the spatially and temporally complete (STC) MODIS Snow-Covered Area and Grain size/MODIS Dust and Radiative Forcing in Snow
	MCD43A3	MODIS daily surface albedo version 6 product
	SPIReS	Snow Property Inversion From Remote Sensing product
	UA	University of Arizona daily snow product
	SNODAS	SNOW Data Assimilation System daily snow product
	MOD10A1	Official MODIS snow cover product
	NLDAS-2	National Land Data Assimilation System phase 2
Accuracy metrics	$R^2$	Coefficient of determination
	RMSE	Root mean square error
	IAV	Interannual variability
	R	Correlation coefficient

	rBias	Relative Bias
	RMSD	Root mean square deviations
	rRMSD	Relative RMSD
Others	DOY	Day of year
	SZA	Solar zenith angle
	BC	Black carbon
	LAP	Light-absorbing particles
	MK	Mann–Kendall test
	NASA	National Aeronautics and Space Administration

**Table A2. Overview of some typical studies and this study on the evaluation of snow processes in land surface models (LSMs).**

Model	Spatial resolution	Involved Snow properties	Involved snow phenology metrics	Reference
CLM4	0.5°×0.67°	$f_{sno}$ , SWE, $D_{sno}$	-	(Toure et al., 2016)
CLM4.5	0.5°×0.67°	$f_{sno}$ , SWE, $D_{sno}$	<u>End_date</u>	(Toure et al., 2018)
CLASS	0.25°	$\alpha_{sur}$ , $f_{sno}$ , SWE	-	(Verseghy et al., 2017)
Noah-MP	10 km	$\alpha_{sur}$ , $f_{sno}$ , $D_{sno}$	-	(Jiang et al., 2020)
E3SM v1	1°	SWE	-	(Brunke et al., 2021)
ELM	0.125°	$\alpha_{sur}$ , $f_{sno}$ , $S_{sno}$ , $R_{sno}$ , SWE, $D_{sno}$	<u>Accumulation onset date</u> , <u>Depletion onset date</u> , <u>Midpoint date</u> , <u>End_date</u> , <u>Duration</u>	This study

Formatted Table

Deleted: SEnDt

Deleted: SOnDt, SMOndt, SMMidDt, SEnDt, SDurDy

#### 640 Code and data availability

ELM model codes with new updates used in the study are publicly available at <https://doi.org/10.5281/zenodo.6324131>. All the SRTM DEM, and GFCC forest cover, and MCD43 surface albedo data can be freely downloaded from the Google Earth Engine (GEE, <https://earthengine.google.com>). The STC-MODSCAG/STC-MODDRFS and SPIReS data used in the study



are available at <https://doi.org/10.5281/zenodo.7194702>. The SPIReS code is publicly available at <https://github.com/edwardbair/SPIRES>. UA and SNODAS data can be accessed at <https://nsidc.org/data/nsidc-0719> and <https://nsidc.org/data/g02158>, respectively. BCQC SNOTEL data is available at <https://www.pnnl.gov/data-products>. Codes to process data, generate all results and produce all figures are archived at [https://github.com/daleihao/snow\\_evaluation\\_ELM](https://github.com/daleihao/snow_evaluation_ELM).

650

#### **Author contributions**

DH conceived the study, designed the experiments, collected the evaluation data, conducted the simulations, analyzed the results, and drafted the original manuscript. GB conceived the study, designed the experiments, discussed the results, and edited the manuscript. EB, KR, and TS provided the remote sensing data and edited the manuscript. YG and LRL discussed the results and edited the manuscript. All authors contributed to reviewing and improving the manuscript.

655

#### **Competing interests**

A co-author is a member of the editorial board of The Cryosphere. The peer-review process was guided by an independent editor, and the authors have no other competing interests to declare.

#### **Acknowledgements**

660 This research was conducted at Pacific Northwest National Laboratory, which is operated for the U.S. Department of Energy by Battelle Memorial Institute under contract DEAC05-76RL01830. This research used resources of the National Energy Research Scientific Computing Center (NERSC), a DOE Office of Science User Facility supported by the Office of Science of the U.S. Department of Energy under contract no. DE-AC02-15 05CH11231. The reported research also used DOE's Biological and Environmental Research Earth System Modeling program's Compy computing cluster located at Pacific Northwest National Laboratory.

665

#### **Financial support**

This research has been supported by the U.S. Department of Energy, Office of Science, Office of Biological and Environmental Research, Earth System Model Development program area, as part of the Climate Process Team projects and the U.S. National Oceanic and Atmospheric Administration (NOAA, grant no. NOAA-OAR-CPO-2019-2005530 and [NA19OAR4310243](#)).

670

Support was also provided by NASA grants 80NSSC20K1349, 80NSSC18K0427, NNSC22K0703, 80NSSC21K0997, and 80NSSC20K1722. [Y. Gu acknowledges the support by \(while serving at\) the National Science Foundation.](#)

## References

- 675 Anttila, K., Manninen, T., Jääskeläinen, E., Riihelä, A., and Lahtinen, P.: The Role of Climate and Land Use in the Changes in Surface Albedo Prior to Snow Melt and the Timing of Melt Season of Seasonal Snow in Northern Land Areas of 40°N–80°N during 1982–2015, *Remote Sensing*, 10, 1619, 2018.
- Bair, E., Stillinger, T., Rittger, K., and Skiles, M.: COVID-19 lockdowns show reduced pollution on snow and ice in the Indus River Basin, *Proceedings of the National Academy of Sciences*, 118, e2101174118, 2021a.
- 680 Bair, E. H., Dozier, J., Stern, C., LeWinter, A., Rittger, K., Savagian, A., Stillinger, T., and Davis, R.: Divergence of apparent and intrinsic snow albedo over a season at a sub-alpine site with implications for remote sensing, *The Cryosphere Discuss.*, 2021, 1-23, 2021b.
- Bair, E. H., Rittger, K., Davis, R. E., Painter, T. H., and Dozier, J.: Validating reconstruction of snow water equivalent in California's Sierra Nevada using measurements from the NASA Airborne Snow Observatory, *Water Resources Research*, 52, 8437-8460, 2016.
- 685 Bair, E. H., Rittger, K., Skiles, S. M., and Dozier, J.: An Examination of Snow Albedo Estimates From MODIS and Their Impact on Snow Water Equivalent Reconstruction, *Water Resources Research*, 55, 7826-7842, 2019.
- Bair, E. H., Stillinger, T., and Dozier, J.: Snow Property Inversion From Remote Sensing (SPIReS): A Generalized Multispectral Unmixing Approach With Examples From MODIS and Landsat 8 OLI, *IEEE Transactions on Geoscience and Remote Sensing*, 59, 7270-7284, 2021c.
- 690 Barnett, T. P., Adam, J. C., and Lettenmaier, D. P.: Potential impacts of a warming climate on water availability in snow-dominated regions, *Nature*, 438, 303-309, 2005.
- Berghuijs, W. R., Woods, R. A., and Hrachowitz, M.: A precipitation shift from snow towards rain leads to a decrease in streamflow, *Nature Climate Change*, 4, 583-586, 2014.
- 695 Boniface, K., Braun, J. J., McCreight, J. L., and Nievinski, F. G.: Comparison of Snow Data Assimilation System with GPS reflectometry snow depth in the Western United States, *Hydrological Processes*, 29, 2425-2437, 2015.
- Böttcher, K., Aurela, M., Kervinen, M., Markkanen, T., Mattila, O.-P., Kolari, P., Metsämäki, S., Aalto, T., Arslan, A. N., and Pulliainen, J.: MODIS time-series-derived indicators for the beginning of the growing season in boreal coniferous forest — A comparison with CO2 flux measurements and phenological observations in Finland, *Remote Sensing of Environment*, 140, 625-638, 2014.
- 700 Broxton, P., Zeng, X., and Dawson, N.: Daily 4 km gridded SWE and snow depth from assimilated in-situ and modeled data over the conterminous US, version 1, NASA National Snow and Ice Data Center Distributed Active Archive Center, Boulder, CO, 2019. 2019.
- Brunke, M. A., Welty, J., and Zeng, X.: Attribution of Snowpack Errors to Simulated Temperature and Precipitation in E3SMv1 Over the Contiguous United States, *Journal of Advances in Modeling Earth Systems*, 13, e2021MS002640, 2021.
- 705 **Brutel-Vuilmet, C., Ménégot, M., and Krinner, G.: An analysis of present and future seasonal Northern Hemisphere land snow cover simulated by CMIP5 coupled climate models, *The Cryosphere*, 7, 67-80, 2013.**
- Cawse-Nicholson, K., Townsend, P. A., Schimel, D., Assiri, A. M., Blake, P. L., Buongiorno, M. F., Campbell, P., Carmon, N., Casey, K. A., Correa-Pabón, R. E., Dahlin, K. M., Dashti, H., Dennison, P. E., Dierssen, H., Erickson, A., Fisher, J. B., 710 Frouin, R., Gatebe, C. K., Gholizadeh, H., Gierach, M., Glenn, N. F., Goodman, J. A., Griffith, D. M., Guild, L., Hakkenberg, C. R., Hochberg, E. J., Holmes, T. R. H., Hu, C., Hulley, G., Huemmrich, K. F., Kudela, R. M., Kokaly, R. F., Lee, C. M., Martin, R., Miller, C. E., Moses, W. J., Muller-Karger, F. E., Ortiz, J. D., Otis, D. B., Pahlevan, N., Painter, T. H., Pavlick, R., Poulter, B., Qi, Y., Realmuto, V. J., Roberts, D., Schaepman, M. E., Schneider, F. D., Schwandner, F. M., Serbin, S. P., Shiklomanov, A. N., Stavros, E. N., Thompson, D. R., Torres-Perez, J. L., Turpie, K. R., Tzortziou, M., Ustin, S., Yu, Q., 715 Yusup, Y., and Zhang, Q.: NASA's surface biology and geology designated observable: A perspective on surface imaging algorithms, *Remote Sensing of Environment*, 257, 112349, 2021.
- Center, N. O. H. R. S.: Snow data assimilation system (SNODAS) data products at NSIDC. National Snow and Ice Data Center Boulder, Colorado USA, 2004.
- Chen, X., Liang, S., Cao, Y., He, T., and Wang, D.: Observed contrast changes in snow cover phenology in northern middle and high latitudes from 2001–2014, *Scientific Reports*, 5, 16820, 2015.
- 720 Clow, D. W., Nanus, L., Verdin, K. L., and Schmidt, J.: Evaluation of SNODAS snow depth and snow water equivalent estimates for the Colorado Rocky Mountains, USA, *Hydrological Processes*, 26, 2583-2591, 2012.

Formatted: Font color: Red

- Dang, C., Zender, C. S., and Flanner, M. G.: Intercomparison and improvement of two-stream shortwave radiative transfer schemes in Earth system models for a unified treatment of cryospheric surfaces, *The Cryosphere*, 13, 2325-2343, 2019.
- 725 Dawson, N., Broxton, P., and Zeng, X.: Evaluation of Remotely Sensed Snow Water Equivalent and Snow Cover Extent over the Contiguous United States, *Journal of Hydrometeorology*, 19, 1777-1791, 2018.
- Decharme, B., Brun, E., Boone, A., Delire, C., Le Moigne, P., and Morin, S.: Impacts of snow and organic soils parameterization on northern Eurasian soil temperature profiles simulated by the ISBA land surface model, *The Cryosphere*, 10, 853-877, 2016.
- 730 Dietz, A. J., Kuenzer, C., Gessner, U., and Dech, S.: Remote sensing of snow – a review of available methods, *International Journal of Remote Sensing*, 33, 4094-4134, 2012.
- Dong, C.: Remote sensing, hydrological modeling and in situ observations in snow cover research: A review, *Journal of Hydrology*, 561, 573-583, 2018.
- Dozier, J.: Mountain hydrology, snow color, and the fourth paradigm, *Eos, Transactions American Geophysical Union*, 92, 373-374, 2011.
- 735 Dozier, J., Bair, E. H., and Davis, R. E.: Estimating the spatial distribution of snow water equivalent in the world's mountains, *WIREs Water*, 3, 461-474, 2016.
- Dozier, J., Painter, T. H., Rittger, K., and Frew, J. E.: Time-space continuity of daily maps of fractional snow cover and albedo from MODIS, *Advances in Water Resources*, 31, 1515-1526, 2008.
- 740 Ferguson, C. R. and Mocko, D. M.: Diagnosing an Artificial Trend in NLDAS-2 Afternoon Precipitation, *Journal of Hydrometeorology*, 18, 1051-1070, 2017.
- Flanner, M. G., Shell, K. M., Barlage, M., Perovich, D. K., and Tschudi, M. A.: Radiative forcing and albedo feedback from the Northern Hemisphere cryosphere between 1979 and 2008, *Nature Geoscience*, 4, 151-155, 2011.
- 745 Flanner, M. G., Zender, C. S., Randerson, J. T., and Rasch, P. J.: Present-day climate forcing and response from black carbon in snow, *Journal of Geophysical Research: Atmospheres*, 112, 2007.
- Golaz, J.-C., Caldwell, P. M., Van Roekel, L. P., Petersen, M. R., Tang, Q., Wolfe, J. D., Abeshu, G., Anantharaj, V., Asay-Davis, X. S., Bader, D. C., Baldwin, S. A., Bisht, G., Bogenschutz, P. A., Branstetter, M., Brunke, M. A., Brus, S. R., Burrows, S. M., Cameron-Smith, P. J., Donahue, A. S., Deakin, M., Easter, R. C., Evans, K. J., Feng, Y., Flanner, M., Foucar, J. G., Fyke, J. G., Griffin, B. M., Hannay, C., Harrop, B. E., Hoffman, M. J., Hunke, E. C., Jacob, R. L., Jacobsen, D. W., Jeffery, N., Jones, P. W., Keen, N. D., Klein, S. A., Larson, V. E., Leung, L. R., Li, H.-Y., Lin, W., Lipscomb, W. H., Ma, P.-L., Mahajan, S., Maltrud, M. E., Mamatjanov, A., McClean, J. L., McCoy, R. B., Neale, R. B., Price, S. F., Qian, Y., Rasch, P. J., Reeves Eyre, J. E. J., Riley, W. J., Ringler, T. D., Roberts, A. F., Roesler, E. L., Salinger, A. G., Shaheen, Z., Shi, X., Singh, B., Tang, J., Taylor, M. A., Thornton, P. E., Turner, A. K., Veneziani, M., Wan, H., Wang, H., Wang, S., Williams, D. N., Wolfram, P. J., Worley, P. H., Xie, S., Yang, Y., Yoon, J.-H., Zelinka, M. D., Zender, C. S., Zeng, X., Zhang, C., Zhang, K., Zhang, Y., Zheng, X., Zhou, T., and Zhu, Q.: The DOE E3SM Coupled Model Version 1: Overview and Evaluation at Standard Resolution, *Journal of Advances in Modeling Earth Systems*, 11, 2089-2129, 2019.
- 755 Günther, D., Marke, T., Essery, R., and Strasser, U.: Uncertainties in Snowpack Simulations—Assessing the Impact of Model Structure, Parameter Choice, and Forcing Data Error on Point-Scale Energy Balance Snow Model Performance, *Water Resources Research*, 55, 2779-2800, 2019.
- 760 Hamlet, A. F. and Lettenmaier, D. P.: Effects of 20th century warming and climate variability on flood risk in the western U.S., *Water Resources Research*, 43, 2007.
- Hao, D., Bisht, G., Gu, Y., Lee, W. L., Liou, K. N., and Leung, L. R.: A parameterization of sub-grid topographical effects on solar radiation in the E3SM Land Model (version 1.0): implementation and evaluation over the Tibetan Plateau, *Geosci. Model Dev.*, 14, 6273-6289, 2021.
- 765 Hao, D., Bisht, G., He, C., Bair, E., Huang, H., Dang, C., Rittger, K., Gu, Y., Wang, H., Qian, Y., and Leung, L. R.: Improving snow albedo modeling in E3SM land model (version 2.0) and assessing its impacts on snow and surface fluxes over the Tibetan Plateau, *Geosci. Model Dev. Discuss.*, 2022, 1-31, 2022a.
- Hao, D., Bisht, G., Huang, M., Ma, P.-L., Tesfa, T., Lee, W.-L., Gu, Y., and Leung, L. R.: Impacts of Sub-Grid Topographic Representations on Surface Energy Balance and Boundary Conditions in the E3SM Land Model: A Case Study in Sierra Nevada, *Journal of Advances in Modeling Earth Systems*, 14, e2021MS002862, 2022b.
- 770 Hao, D., Wen, J., Xiao, Q., Lin, X., You, D., Tang, Y., Liu, Q., and Zhang, S.: Sensitivity of Coarse-Scale Snow-Free Land Surface Shortwave Albedo to Topography, *Journal of Geophysical Research: Atmospheres*, 124, 9028-9045, 2019.

- Hao, D., Wen, J., Xiao, Q., Wu, S., Lin, X., Dou, B., You, D., and Tang, Y.: Simulation and Analysis of the Topographic Effects on Snow-Free Albedo over Rugged Terrain, *Remote Sensing*, 10, 278, 2018a.
- 775 Hao, D., Wen, J., Xiao, Q., Wu, S., Lin, X., You, D., and Tang, Y.: Modeling Anisotropic Reflectance Over Composite Sloping Terrain, *IEEE Transactions on Geoscience and Remote Sensing*, 56, 3903-3923, 2018b.
- Henderson, G. R., Peings, Y., Furtado, J. C., and Kushner, P. J.: Snow-atmosphere coupling in the Northern Hemisphere, *Nature Climate Change*, 8, 954-963, 2018.
- Henn, B., Newman, A. J., Livneh, B., Daly, C., and Lundquist, J. D.: An assessment of differences in gridded precipitation datasets in complex terrain, *Journal of Hydrology*, 556, 1205-1219, 2018.
- 780 Jiang, Y., Chen, F., Gao, Y., He, C., Barlage, M., and Huang, W.: Assessment of Uncertainty Sources in Snow Cover Simulation in the Tibetan Plateau, *Journal of Geophysical Research: Atmospheres*, 125, e2020JD032674, 2020.
- Kouki, K., Anttila, K., Manninen, T., Luojus, K., Wang, L., and Riihelä, A.: Intercomparison of Snow Melt Onset Date Estimates From Optical and Microwave Satellite Instruments Over the Northern Hemisphere for the Period 1982–2015, *Journal of Geophysical Research: Atmospheres*, 124, 11205-11219, 2019.
- 785 Krinner, G., Derksen, C., Essery, R., Flanner, M., Hagemann, S., Clark, M., Hall, A., Rott, H., Brutel-Vuilmet, C., Kim, H., Ménard, C. B., Mudryk, L., Thackeray, C., Wang, L., Arduini, G., Balsamo, G., Bartlett, P., Boike, J., Boone, A., Chéruy, F., Colin, J., Cuntz, M., Dai, Y., Decharme, B., Derry, J., Ducharne, A., Dutra, E., Fang, X., Fierz, C., Ghattas, J., Gusev, Y., Haverd, V., Kontu, A., Lafaysse, M., Law, R., Lawrence, D., Li, W., Marke, T., Marks, D., Ménégos, M., Nasonova, O., Nitta, T., Niwano, M., Pomeroy, J., Raleigh, M. S., Schaedler, G., Semenov, V., Smirnova, T. G., Stacke, T., Strasser, U., Svenson, S., Turkov, D., Wang, T., Wever, N., Yuan, H., Zhou, W., and Zhu, D.: ESM-SnowMIP: assessing snow models and quantifying snow-related climate feedbacks, *Geosci. Model Dev.*, 11, 5027-5049, 2018.
- 790 Lamarque, J. F., Bond, T. C., Eyring, V., Granier, C., Heil, A., Klimont, Z., Lee, D., Liousse, C., Mieville, A., Owen, B., Schultz, M. G., Shindell, D., Smith, S. J., Stehfest, E., Van Aardenne, J., Cooper, O. R., Kainuma, M., Mahowald, N., McConnell, J. R., Naik, V., Riahi, K., and van Vuuren, D. P.: Historical (1850–2000) gridded anthropogenic and biomass burning emissions of reactive gases and aerosols: methodology and application, *Atmos. Chem. Phys.*, 10, 7017-7039, 2010.
- 795 Lee, W. Y., Gim, H. J., and Park, S. K.: Review article: Parameterizations of snow-related physical processes in land surface models, *The Cryosphere Discuss.*, 2021, 1-40, 2021.
- Leung, L. R., Bader, D. C., Taylor, M. A., and McCoy, R. B.: An Introduction to the E3SM Special Collection: Goals, Science Drivers, Development, and Analysis, *Journal of Advances in Modeling Earth Systems*, 12, e2019MS001821, 2020.
- 800 Lundquist, J. D., Dickerson-Lange, S., Gutmann, E., Jonas, T., Lumbrazo, C., and Reynolds, D.: Snow interception modelling: Isolated observations have led to many land surface models lacking appropriate temperature sensitivities, *Hydrological Processes*, 35, e14274, 2021.
- Magnusson, J., Wever, N., Essery, R., Helbig, N., Winstral, A., and Jonas, T.: Evaluating snow models with varying process representations for hydrological applications, *Water Resources Research*, 51, 2707-2723, 2015.
- 805 Mamenko, K., Kubo, T., Oguma, H., Amagai, Y., and Shoji, Y.: Decline in the alpine landscape aesthetic value in a national park under climate change, *Climatic Change*, 170, 35, 2022.
- Ménard, C. B., Essery, R., Barr, A., Bartlett, P., Derry, J., Dumont, M., Fierz, C., Kim, H., Kontu, A., Lejeune, Y., Marks, D., Niwano, M., Raleigh, M., Wang, L., and Wever, N.: Meteorological and evaluation datasets for snow modelling at 10 reference sites: description of in situ and bias-corrected reanalysis data, *Earth Syst. Sci. Data*, 11, 865-880, 2019.
- 810 Ménard, C. B., Essery, R., Krinner, G., Arduini, G., Bartlett, P., Boone, A., Brutel-Vuilmet, C., Burke, E., Cuntz, M., Dai, Y., Decharme, B., Dutra, E., Fang, X., Fierz, C., Gusev, Y., Hagemann, S., Haverd, V., Kim, H., Lafaysse, M., Marke, T., Nasonova, O., Nitta, T., Niwano, M., Pomeroy, J., Schädler, G., Semenov, V. A., Smirnova, T., Strasser, U., Swenson, S., Turkov, D., Wever, N., and Yuan, H.: Scientific and Human Errors in a Snow Model Intercomparison, *Bulletin of the American Meteorological Society*, 102, E61-E79, 2021.
- 815 Meromy, L., Molotch, N. P., Link, T. E., Fassnacht, S. R., and Rice, R.: Subgrid variability of snow water equivalent at operational snow stations in the western USA, *Hydrological Processes*, 27, 2383-2400, 2013.
- Metsämäki, S., Böttcher, K., Pulliainen, J., Luojus, K., Cohen, J., Takala, M., Mattila, O.-P., Schwaizer, G., Derksen, C., and Koponen, S.: The accuracy of snow melt-off day derived from optical and microwave radiometer data — A study for Europe, *Remote Sensing of Environment*, 211, 1-12, 2018.
- 820 Musselman, K. N., Addor, N., Vano, J. A., and Molotch, N. P.: Winter melt trends portend widespread declines in snow water resources, *Nature Climate Change*, 11, 418-424, 2021.

- 825 Myneni, R. B., Hoffman, S., Knyazikhin, Y., Privette, J., Glassy, J., Tian, Y., Wang, Y., Song, X., Zhang, Y., and Smith, G.:  
Global products of vegetation leaf area and fraction absorbed PAR from year one of MODIS data, *Remote sensing of  
environment*, 83, 214-231, 2002.
- 830 Niittynen, P., Heikkinen, R. K., and Luoto, M.: Snow cover is a neglected driver of Arctic biodiversity loss, *Nature Climate  
Change*, 8, 997-1001, 2018.
- O'Neill, M. M. F., Tijerina, D. T., Condon, L. E., and Maxwell, R. M.: Assessment of the ParFlow-CLM CONUS 1.0  
integrated hydrologic model: evaluation of hyper-resolution water balance components across the contiguous United States,  
835 *Geosci. Model Dev.*, 14, 7223-7254, 2021.
- Painter, T. H., Bryant, A. C., and Skiles, S. M.: Radiative forcing by light absorbing impurities in snow from MODIS surface  
reflectance data, *Geophysical Research Letters*, 39, 2012.
- Painter, T. H., Rittger, K., McKenzie, C., Slaughter, P., Davis, R. E., and Dozier, J.: Retrieval of subpixel snow covered area,  
grain size, and albedo from MODIS, *Remote Sensing of Environment*, 113, 868-879, 2009.
- 840 Pan, M., Sheffield, J., Wood, E. F., Mitchell, K. E., Houser, P. R., Schaake, J. C., Robock, A., Lohmann, D., Cosgrove, B.,  
Duan, Q., Luo, L., Higgins, R. W., Pinker, R. T., and Tarpley, J. D.: Snow process modeling in the North American Land Data  
Assimilation System (NLDAS): 2. Evaluation of model simulated snow water equivalent, *Journal of Geophysical Research:  
Atmospheres*, 108, 2003.
- 845 Peng, S., Piao, S., Ciais, P., Friedlingstein, P., Zhou, L., and Wang, T.: Change in snow phenology and its potential feedback  
to temperature in the Northern Hemisphere over the last three decades, *Environmental Research Letters*, 8, 014008, 2013.
- Qian, Y., Wang, H., Zhang, R., Flanner, M. G., and Rasch, P. J.: A sensitivity study on modeling black carbon in snow and its  
radiative forcing over the Arctic and Northern China, *Environmental Research Letters*, 9, 064001, 2014.
- Rabus, B., Eineder, M., Roth, A., and Bamler, R.: The shuttle radar topography mission—a new class of digital elevation  
models acquired by spaceborne radar, *ISPRS Journal of Photogrammetry and Remote Sensing*, 57, 241-262, 2003.
- 850 Räisänen, P., Makkonen, R., Kirkevåg, A., and Debernard, J. B.: Effects of snow grain shape on climate simulations: sensitivity  
tests with the Norwegian Earth System Model, *The Cryosphere*, 11, 2919-2942, 2017.
- Raleigh, M. S., Rittger, K., Moore, C. E., Henn, B., Lutz, J. A., and Lundquist, J. D.: Ground-based testing of MODIS fractional  
snow cover in subalpine meadows and forests of the Sierra Nevada, *Remote Sensing of Environment*, 128, 44-57, 2013.
- Rittger, K., Brodzik, M.J., & Raleigh, M.: Snow Today. Boulder, Colorado USA, National Snow and Ice Data Center, 2022.  
855 (<https://nsidc.org/snow-today/snow-viewer>).
- Rittger, K., Painter, T. H., and Dozier, J.: Assessment of methods for mapping snow cover from MODIS, *Advances in Water  
Resources*, 51, 367-380, 2013.
- Rittger, K., Raleigh, M. S., Dozier, J., Hill, A. F., Lutz, J. A., and Painter, T. H.: Canopy Adjustment and Improved Cloud  
Detection for Remotely Sensed Snow Cover Mapping, *Water Resources Research*, 56, e2019WR024914, 2020.
- 860 Schaaf, C. B., Gao, F., Strahler, A. H., Lucht, W., Li, X., Tsang, T., Strugnell, N. C., Zhang, X., Jin, Y., Muller, J.-P., Lewis,  
P., Barnsley, M., Hobson, P., Disney, M., Roberts, G., Dunderdale, M., Doll, C., d'Entremont, R. P., Hu, B., Liang, S., Privette,  
J. L., and Roy, D.: First operational BRDF, albedo nadir reflectance products from MODIS, *Remote Sensing of Environment*,  
83, 135-148, 2002.
- Schreiner-McGraw, A. P. and Ajami, H.: Combined impacts of uncertainty in precipitation and air temperature on simulated  
mountain system recharge from an integrated hydrologic model, *Hydrol. Earth Syst. Sci.*, 26, 1145-1164, 2022.
- 865 Serreze, M. C., Clark, M. P., Armstrong, R. L., McGinnis, D. A., and Pulwarty, R. S.: Characteristics of the western United  
States snowpack from snowpack telemetry (SNOTEL) data, *Water Resources Research*, 35, 2145-2160, 1999.
- Sexton, J. O., Song, X.-P., Feng, M., Noojipady, P., Anand, A., Huang, C., Kim, D.-H., Collins, K. M., Channan, S., DiMiceli,  
C., and Townshend, J. R.: Global, 30-m resolution continuous fields of tree cover: Landsat-based rescaling of MODIS  
870 vegetation continuous fields with lidar-based estimates of error, *International Journal of Digital Earth*, 6, 427-448, 2013.
- Siirila-Woodburn, E. R., Rhoades, A. M., Hatchett, B. J., Huning, L. S., Szinai, J., Tague, C., Nico, P. S., Feldman, D. R.,  
Jones, A. D., Collins, W. D., and Kaatz, L.: A low-to-no snow future and its impacts on water resources in the western United  
States, *Nature Reviews Earth & Environment*, 2, 800-819, 2021.
- 875 Skiles, S. M., Flanner, M., Cook, J. M., Dumont, M., and Painter, T. H.: Radiative forcing by light-absorbing particles in snow,  
*Nature Climate Change*, 8, 964-971, 2018.
- Stillinger, T., Rittger, K., Raleigh, M. S., Michell, A., Davis, R. E., and Bair, E. H.: Landsat, MODIS, and VIIRS snow cover  
mapping algorithm performance as validated by airborne lidar datasets, *The Cryosphere Discuss.*, 2022, 1-37, 2022.

- Sun, N., Yan, H., Wigmosta, M. S., Leung, L. R., Skaggs, R., and Hou, Z.: Regional Snow Parameters Estimation for Large-Domain Hydrological Applications in the Western United States, *Journal of Geophysical Research: Atmospheres*, 124, 5296-5313, 2019.
- 875 Swenson, S. C. and Lawrence, D. M.: A new fractional snow-covered area parameterization for the Community Land Model and its effect on the surface energy balance, *Journal of Geophysical Research: Atmospheres*, 117, 2012.
- Takala, M., Pulliainen, J., Metsamäki, S. J., and Koskinen, J. T.: Detection of Snowmelt Using Spaceborne Microwave Radiometer Data in Eurasia From 1979 to 2007, *IEEE Transactions on Geoscience and Remote Sensing*, 47, 2996-3007, 2009.
- 880 Tesfa, T. K., Leung, L. R., and Ghan, S. J.: Exploring Topography-Based Methods for Downscaling Subgrid Precipitation for Use in Earth System Models, *Journal of Geophysical Research: Atmospheres*, 125, e2019JD031456, 2020.
- Toure, A. M., Luo, K., Rodell, M., Beaudoin, H., and Getirana, A.: Evaluation of Simulated Snow and Snowmelt Timing in the Community Land Model Using Satellite-Based Products and Streamflow Observations, *Journal of Advances in Modeling Earth Systems*, 10, 2933-2951, 2018.
- 885 Toure, A. M., Rodell, M., Yang, Z.-L., Beaudoin, H., Kim, E., Zhang, Y., and Kwon, Y.: Evaluation of the Snow Simulations from the Community Land Model, Version 4 (CLM4), *Journal of Hydrometeorology*, 17, 153-170, 2016.
- Verseghy, D., Brown, R., and Wang, L.: Evaluation of CLASS Snow Simulation over Eastern Canada, *Journal of Hydrometeorology*, 18, 1205-1225, 2017.
- Wang, H., Easter, R. C., Zhang, R., Ma, P.-L., Singh, B., Zhang, K., Ganguly, D., Rasch, P. J., Burrows, S. M., Ghan, S. J., Lou, S., Qian, Y., Yang, Y., Feng, Y., Flanner, M., Leung, L. R., Liu, X., Shrivastava, M., Sun, J., Tang, Q., Xie, S., and Yoon, J.-H.: Aerosols in the E3SM Version 1: New Developments and Their Impacts on Radiative Forcing, *Journal of Advances in Modeling Earth Systems*, 12, e2019MS001851, 2020.
- Wang, Z., Schaaf, C. B., Chopping, M. J., Strahler, A. H., Wang, J., Román, M. O., Rocha, A. V., Woodcock, C. E., and Shuai, Y.: Evaluation of Moderate-resolution Imaging Spectroradiometer (MODIS) snow albedo product (MCD43A) over tundra, *Remote Sensing of Environment*, 117, 264-280, 2012.
- 895 Wang, Z., Schaaf, C. B., Strahler, A. H., Chopping, M. J., Román, M. O., Shuai, Y., Woodcock, C. E., Hollinger, D. Y., and Fitzjarrald, D. R.: Evaluation of MODIS albedo product (MCD43A) over grassland, agriculture and forest surface types during dormant and snow-covered periods, *Remote Sensing of Environment*, 140, 60-77, 2014.
- Wang, Z., Schaaf, C. B., Sun, Q., Shuai, Y., and Román, M. O.: Capturing rapid land surface dynamics with Collection V006 MODIS BRDF/NBAR/Albedo (MCD43) products, *Remote Sensing of Environment*, 207, 50-64, 2018.
- 900 Xia, Y., Hao, Z., Shi, C., Li, Y., Meng, J., Xu, T., Wu, X., and Zhang, B.: Regional and Global Land Data Assimilation Systems: Innovations, Challenges, and Prospects, *Journal of Meteorological Research*, 33, 159-189, 2019.
- Xia, Y., Mitchell, K., Ek, M., Sheffield, J., Cosgrove, B., Wood, E., Luo, L., Alonge, C., Wei, H., Meng, J., Livneh, B., Lettenmaier, D., Koren, V., Duan, Q., Mo, K., Fan, Y., and Mocko, D.: Continental-scale water and energy flux analysis and validation for the North American Land Data Assimilation System project phase 2 (NLDAS-2): 1. Intercomparison and application of model products, *Journal of Geophysical Research: Atmospheres*, 117, 2012.
- 905 Xiao, M., Mahanama, S. P., Xue, Y., Chen, F., and Lettenmaier, D. P.: Modeling Snow Ablation over the Mountains of the Western United States: Patterns and Controlling Factors, *Journal of Hydrometeorology*, 22, 297-311, 2021.
- Xie, Z., Hu, Z., Ma, Y., Sun, G., Gu, L., Liu, S., Wang, Y., Zheng, H., and Ma, W.: Modeling Blowing Snow Over the Tibetan Plateau With the Community Land Model: Method and Preliminary Evaluation, *Journal of Geophysical Research: Atmospheres*, 124, 9332-9355, 2019.
- 910 Yan, H., Sun, N., Wigmosta, M., Skaggs, R., Hou, Z., and Leung, R.: Next-Generation Intensity-Duration-Frequency Curves for Hydrologic Design in Snow-Dominated Environments, *Water Resources Research*, 54, 1093-1108, 2018.
- Zeng, X., Broxton, P., and Dawson, N.: Snowpack Change From 1982 to 2016 Over Conterminous United States, *Geophysical Research Letters*, 45, 12,940-912,947, 2018.
- 915

Supplementary Materials for

Evaluation of E3SM Land Model snow simulations over the Western United States

Deleted: processes

Deleted: in E3SM land model

Dalei Hao<sup>1</sup>, Gautam Bisht<sup>1</sup>, Karl Rittger<sup>2</sup>, Timbo Stillinger<sup>3</sup>, Edward Bair<sup>3</sup>, Yu Gu<sup>4</sup>, L. Ruby Leung<sup>1</sup>

<sup>1</sup>Atmospheric Sciences and Global Change Division, Pacific Northwest National Laboratory, Richland, WA, USA  
Laboratory

<sup>2</sup>Institute for Arctic and Alpine Research, University of Colorado, Boulder, CO, USA

<sup>3</sup>Earth Research Institute, University of California, Santa Barbara, CA, USA

<sup>4</sup>Joint Institute for Regional Earth System Science and Engineering and Department of Atmospheric and Oceanic Sciences, University of California, Los Angeles, CA, USA

Correspondence to: dalei.hao@pnnl.gov

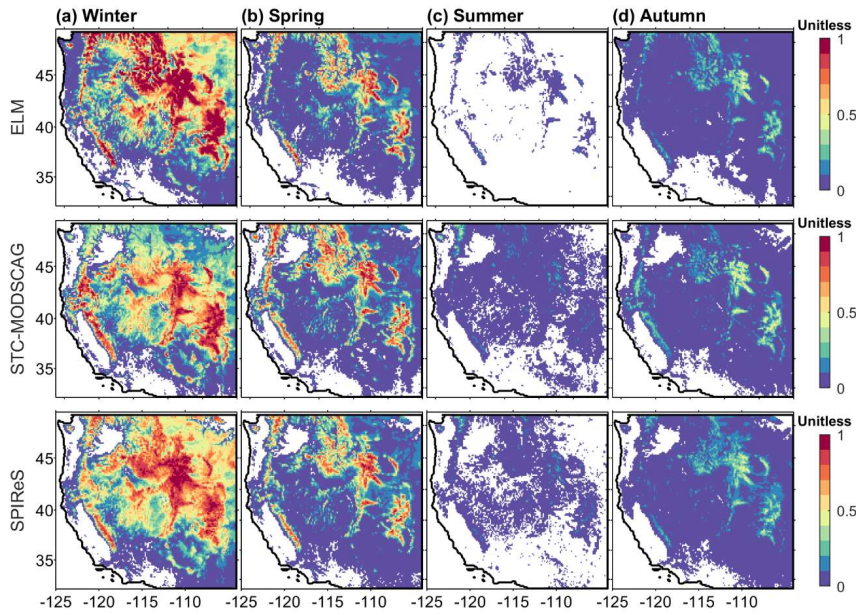


Figure S1: Spatial distributions of snow cover fraction ( $f_{sno}$ ) in ELM and two remote sensing products (i.e., STC-MODSCAG and SPIReS) for different seasons: (a) winter, (b) spring, (c) summer and (d) autumn. In all panels, regions with no snow cover are masked with white color.

Formatted: Not Superscript/ Subscript



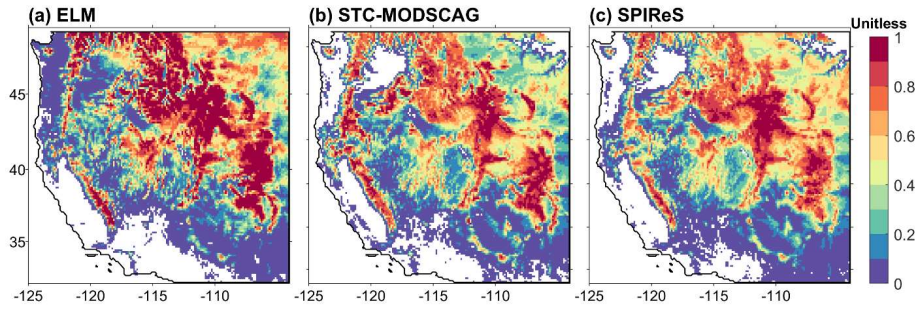


Figure S2: Spatial distributions of snow cover fraction ( $f_{sno}$ ) in ELM and two remote sensing products (i.e., STC-MODSCAG and SPIReS) for February.

Formatted: Not Superscript/ Subscript

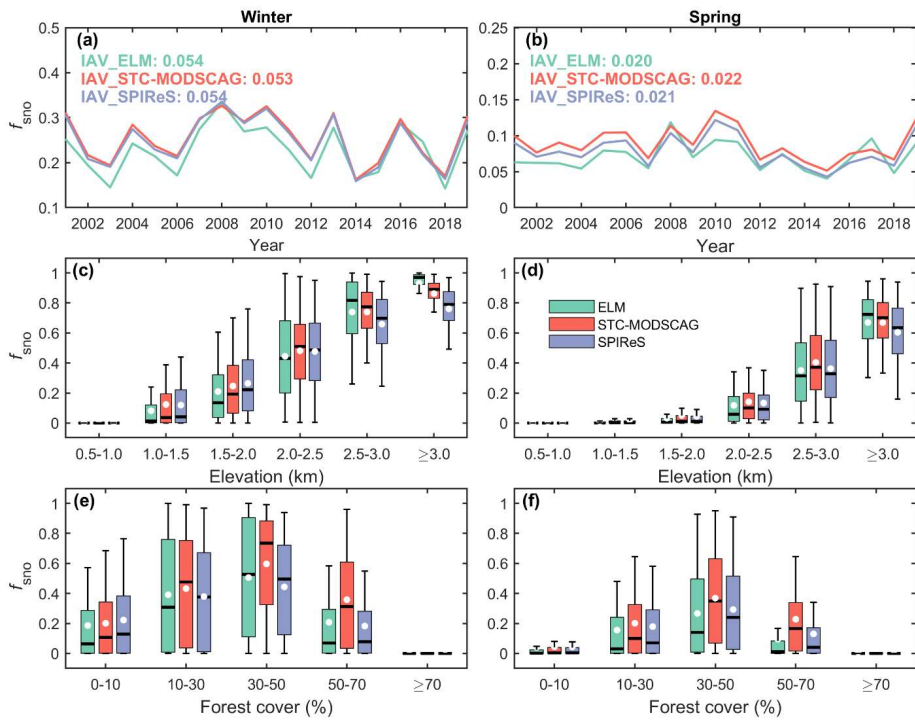


Figure S3: (a,b) Time series of regional average values, (c,d) elevation gradients, and (e,f) change with forest cover of **snow cover fraction** ( $f_{sno}$ ) in ELM (green), STC-MODSCAG (red), and SPIReS (blue) over the WUS regions below 42° in latitude. Panels (a,c,e) are for winter and panels (b,d,f) are for spring. In panels (c-f), the white dots represent the average values.

Formatted: Not Superscript/ Subscript

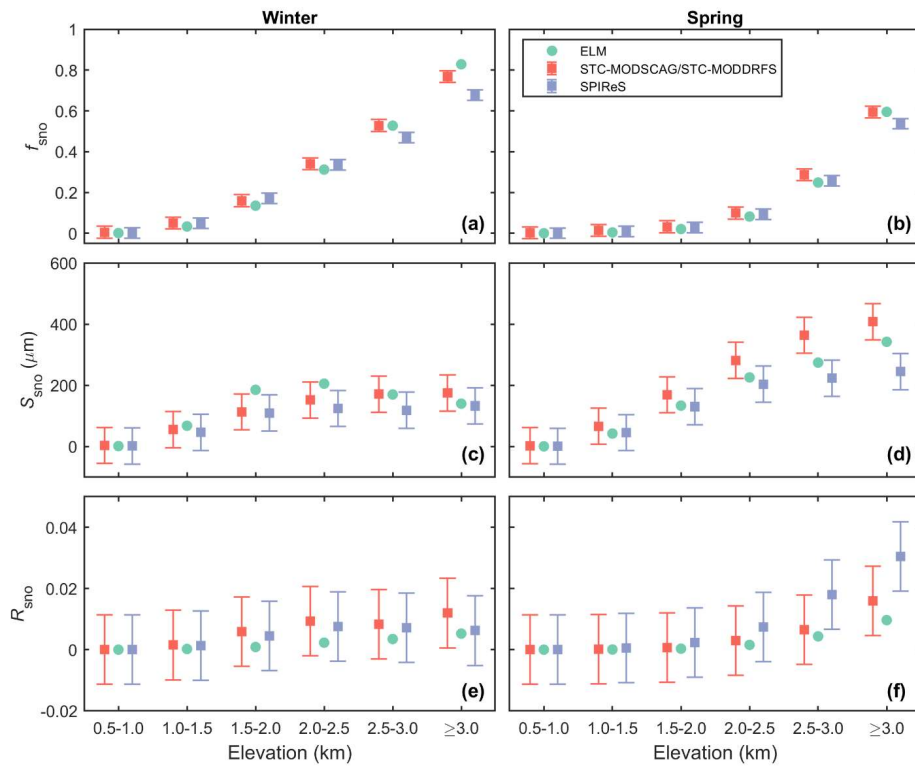


Figure S4: The area-weighted average (a,b) **snow cover fraction** ( $f_{\text{sno}}$ ), (c,d) **snow grain size** ( $S_{\text{sno}}$ ) and (e,f) **snow albedo reduction** ( $R_{\text{sno}}$ ) for (a,c,e) winter and (b,d,f) spring of ELM (green), STC-MODSCAG/STC-MODDRFS (red) and SPIReS (blue) over the WUS regions below  $42^\circ$  in latitude. The bar width represents the uncertainty bounds of STC-MODSCAG/STC-MODDRFS and SPIReS from (Bair et al., 2021a).

Formatted: Not Superscript/ Subscript

Formatted: Not Superscript/ Subscript

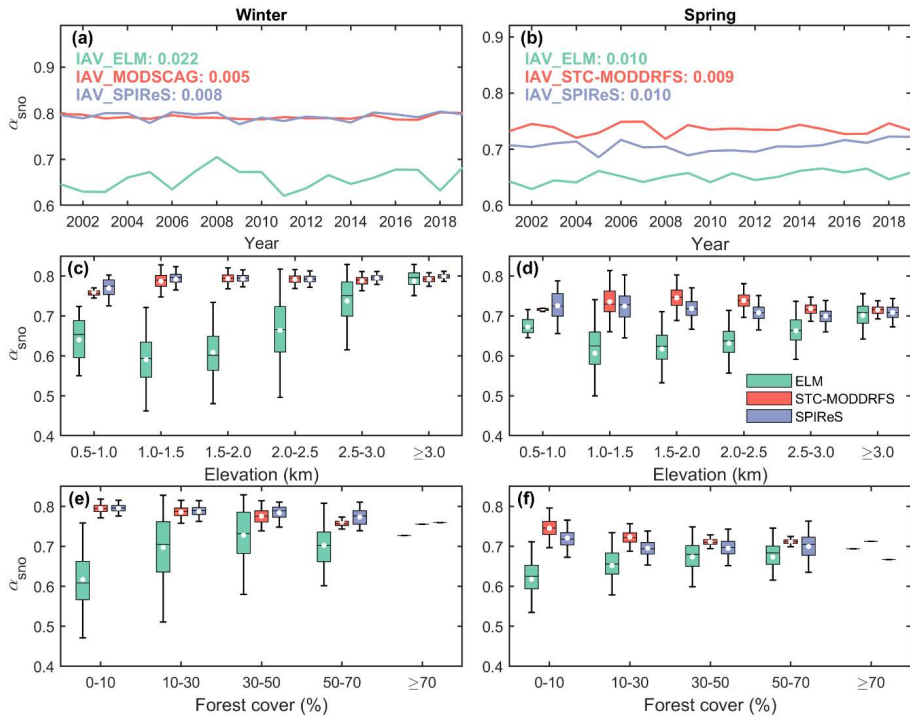


Figure S5: (a,b) Time series of regional average values, (c,d) elevation gradients, and (e,f) change with forest cover of **snow albedo** ( $\alpha_{sno}$ ) in ELM (green), STC-MODSCAG (red), and SPIReS (blue) over the WUS regions below  $42^\circ$  in latitude. Panels (a,c,e) are for winter and panels (b,d,f) are for spring. In panels (c-f), the white dots represent the average values.

Formatted: Not Superscript/ Subscript

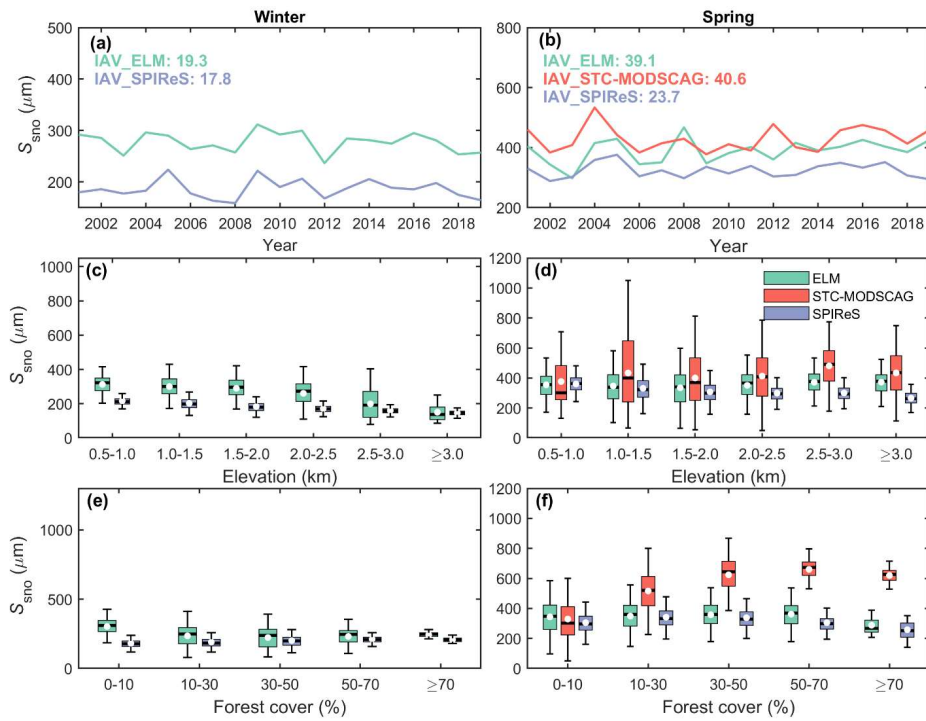


Figure S6: (a,b) Time series of regional average values, (c,d) elevation gradients, and (e,f) change with forest cover of **snow grain size** ( $S_{sno}$ ) in ELM (green), STC-MODSCAG (red), and SPIReS (blue) over the U.S. Panels (a,c,e) are for winter and panels (b,d,f) are for spring. In panels (c-f), the white dots represent the average values.

Formatted: Not Superscript/ Subscript

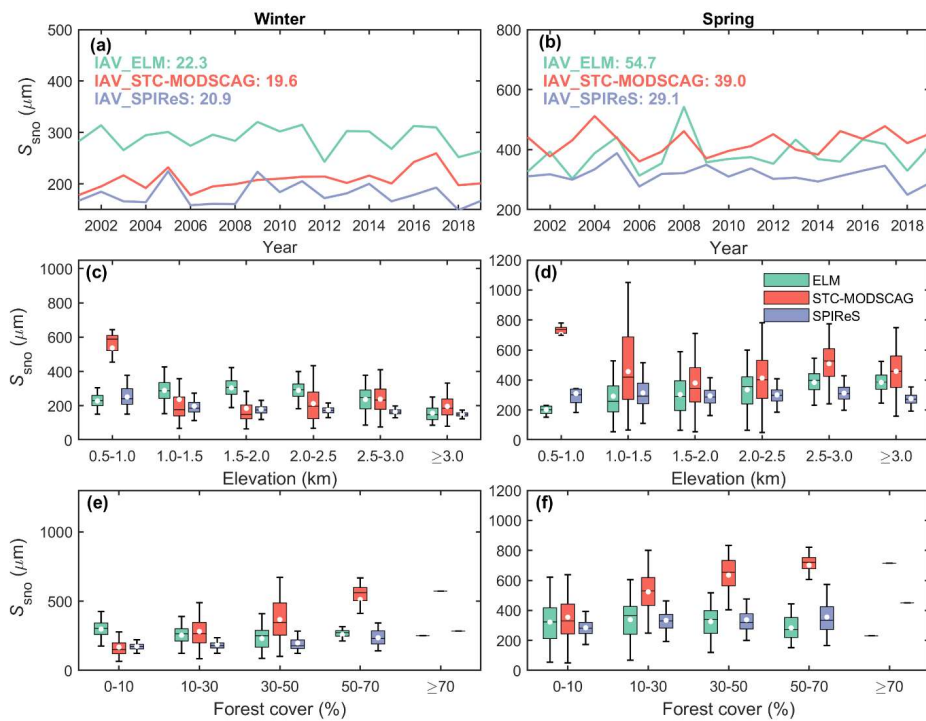


Figure S7: Same as Figure S6, except for the statistics over the WUS regions below 42° in latitude.

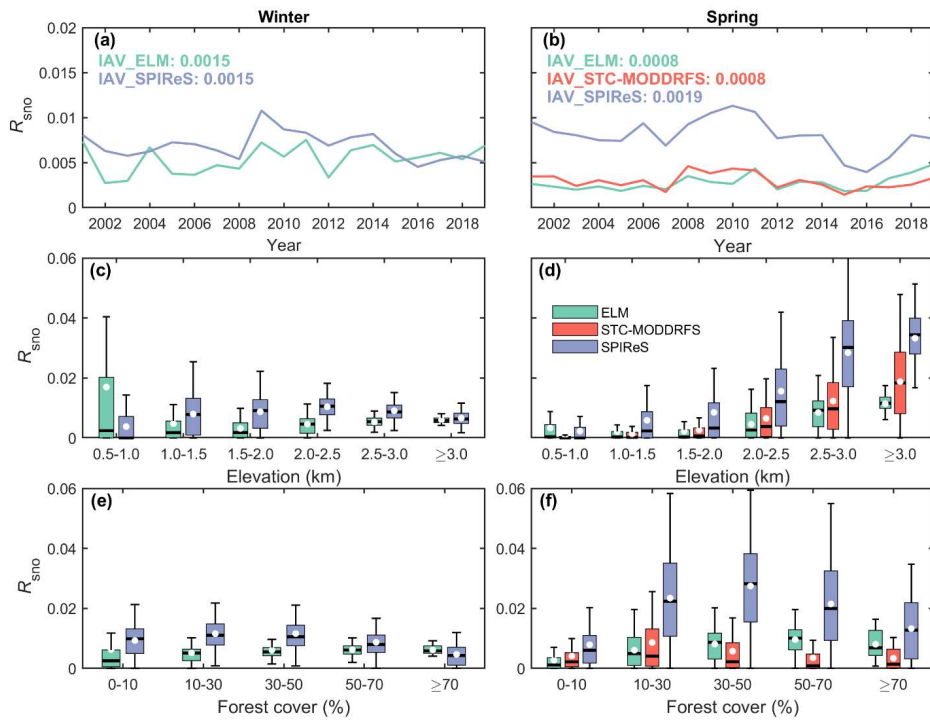
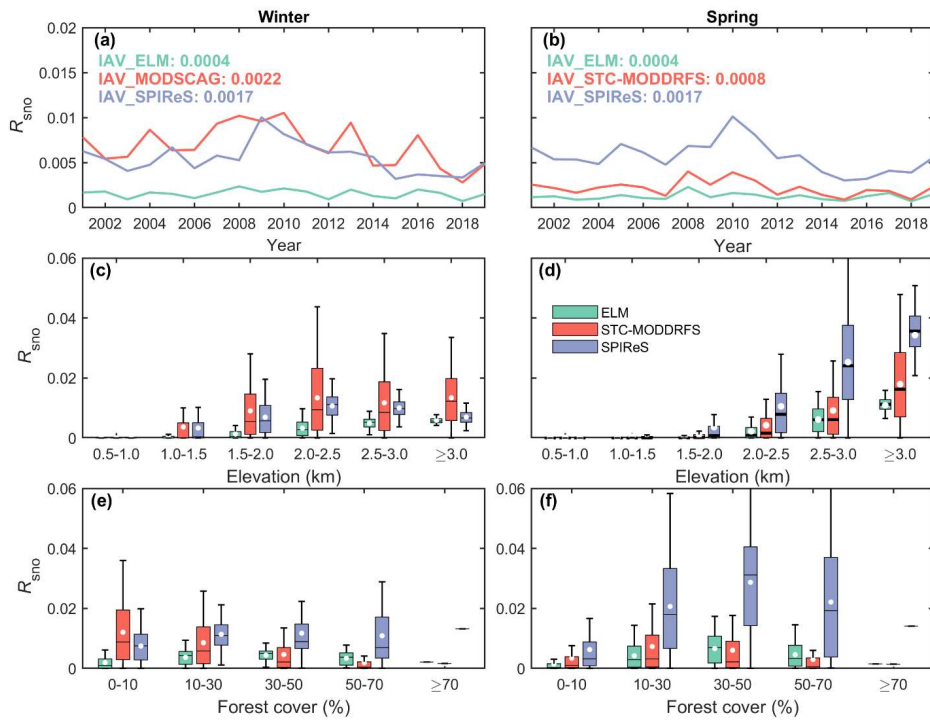


Figure S8: (a,b) Time series of regional average values, (c,d) elevation gradients, and (e,f) change with forest cover of **snow albedo reduction ( $R_{sno}$ )** in ELM (green), STC-MODSCAG (red), and SPIReS (blue) over the WUS. Panels (a,c,e) are for winter and panels (b,d,f) are for spring. In panels (c-f), the white dots represent the average values.

Formatted: Not Superscript/ Subscript



**Figure S9:** Same as Figure S8, except for the statistics over the WUS regions below 42° in latitude.



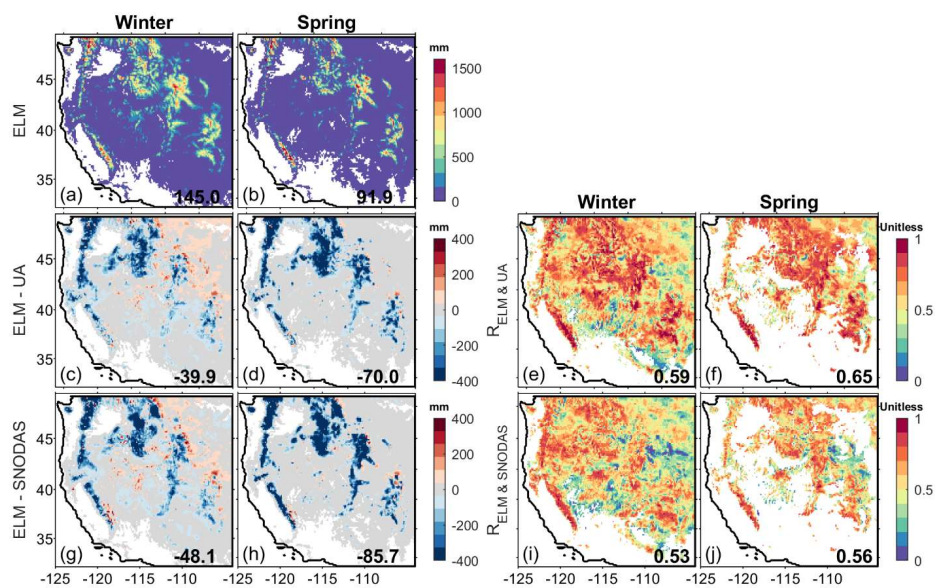


Figure S10: Spatial distributions of (a,b)  $D_{\text{sno}}$  in ELM and (c,d,g,h) the snow depth ( $D_{\text{sno}}$ ) difference between ELM and two remote sensing products (i.e., MODSCAG and SPIReS) and (e,f,i,j) their temporal correlations ( $R_s$ ) for different seasons: (a,c,e,g,i) winter and (b,d,f,h,j) spring. In all panels, regions with no snow cover are masked with white color. The area-weighted average values are labelled in each panel.

Formatted: Not Superscript/ Subscript

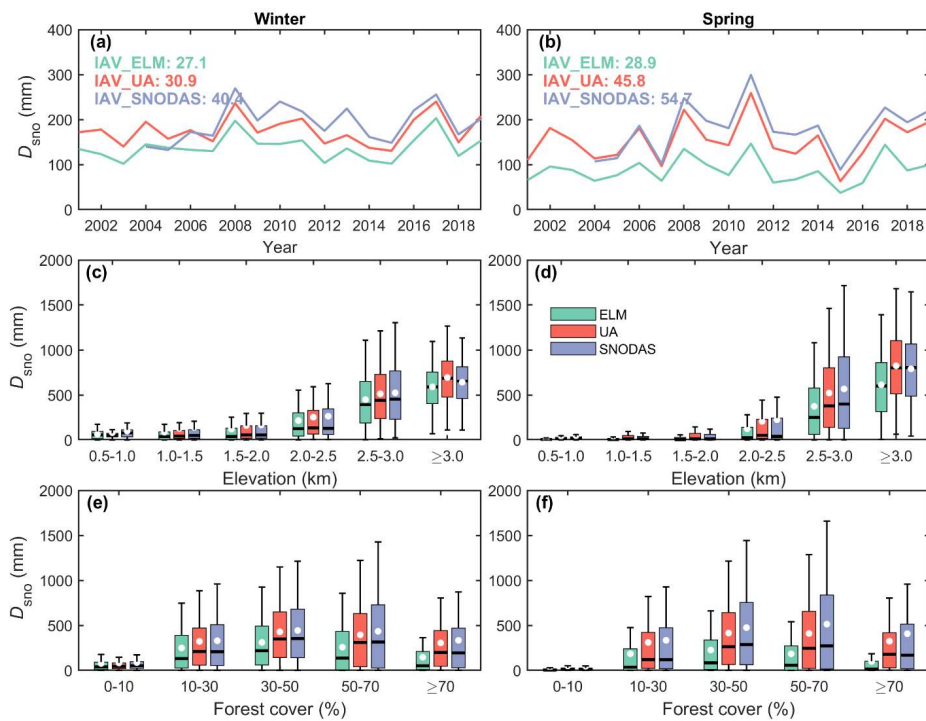


Figure S11: (a,b) Time series of regional average values, (c,d) elevation gradients, and (e,f) change with forest cover of snow depth ( $D_{sno}$ ) in ELM (green), UA (red), and SNODAS (blue) over the WUS. Panels (a,c,e) are for winter and panels (b,d,f) are for spring. In panels (c-f), the white dots represent the average values.

Formatted: Not Superscript/ Subscript