

# Biochar promotes soil aggregate stability and associated organic carbon sequestration and regulates microbial community structures in Mollisols from Northeast China

Jing Sun<sup>1,2</sup>, Xinrui Lu<sup>1\*</sup>, Guoshuang Chen<sup>1</sup>, Nana Luo<sup>1</sup>, Qilin Zhang<sup>1,2</sup>, Xiujuan Li<sup>1,2\*</sup>

<sup>1</sup> State Key laboratory of Black Soils Conservation and Utilization, Northeast Institute of Geography and Agroecology, CAS, Changchun 130102, China

<sup>2</sup>University of Chinese Academy of Sciences, Beijing 100049, China

*Correspondence to:* Xinrui Lu (luxinrui@iga.ac.cn); Xiujuan Li ([lixiujuan@iga.ac.cn](mailto:lixiujuan@iga.ac.cn))

**Abstract.** Since the 1950s, heavy plowing of Mollisols, combined with a lack of organic matter intake, has resulted in severe soil degradation in Northeast China. The use of biochar in combination with fertilizer is a sustainable method of improving soil quality. In this paper, we conducted field experiments to explore the response of the stability mechanism of the soil aggregate, the dynamic properties of organic carbon, and changes in the microbial community structure to biochar. The biochar input levels were C1, C2, and C3 (9.8, 19.6, and 29.4 Mg C ha<sup>-1</sup>, respectively), while the nitrogen (N) fertilizer rates were N1/2 (300 kg N ha<sup>-1</sup>) and N (600 kg N ha<sup>-1</sup>). Results indicated that biochar combined with N fertilizer effectively increases soil carbon storage and aggregates stability ( $P < 0.05$ ). And C2N treatment increased the aggregate contents of the  $> 2$  mm and 0.25–2 mm fractions by 56.59% and 23.41%, respectively. The phospholipid fatty acids (PLFA) analysis revealed that microbial community structure was effectively improved with biochar combined with N fertilizer application ( $P < 0.05$ ). The F/B ratio increased by 25.22% and the gram-positive (Gm<sup>+</sup>)/gram-negative (Gm<sup>-</sup>) ratio by 4.65% under the C2N1/2 treatment. This study concluded that the response of Mollisols to biochar is primarily determined by the interplay of aggregate, organic carbon, and microorganisms. Therefore, the use of biochar combined with N fertilizer might mitigate soil degradation of Mollisols under an optimal application ratio, but the underlying mechanism still requires further exploration. This study will provide a scientific basis for the conservation and sustainable utilization of Mollisols resources.

## 1 Introduction

Mollisols, considered the world's high-yield soils, are typically found in the northern and southern

hemispheres in mid-latitudes and constitute about 7% of the world's soil resource base (Zhang et al., 2018; Eswaran et al., 2011). However, the Mollisols have been severely degraded by intensive continuous cultivation and soil erosion, which has led to the destruction of the agroecosystem and soil infertile, with far-reaching effects on global climate change (He et al., 2021; Antonello et al., 2019). Mollisols in China are mainly distributed in Heilongjiang and Jilin provinces, as one of the world's four major black soil regions, which is responsible for the mission of being the “Large granary” (Mei et al., 2021). The organic matter content of the Mollisols in Northeast China decreased by 30–50% from 1980 to 2011, which directly threatened the stability of the regional grain yields (Li et al., 2016). The principal manifestations of soil degradation were a significant decline of soil organic carbon (SOC), destruction in soil aggregation (Zhang et al., 2018), and deterioration of soil structure (Luo et al., 2020; Zhang et al., 2019). The climate (Bottinelli et al., 2017), tillage (Xue et al., 2019), microbial activities (Zhang et al., 2021), and C content, all affect the size, number, and composition of soil aggregate (Yin et al., 2018). The SOC can promote the formation of large aggregates in soil, in turn, the increased soil aggregate stability promotes soil SOC sequestration (Zhang et al., 2018). The interaction between carbon sequestration and aggregate stability could reduce soil nutrient loss, improve effective water-holding capacity, increase crop yields, and mitigate global warming through lengthy soil carbon sequestration (He et al., 2021; Scow et al., 2017). It is critical to identify effective strategies to manage the soil in order to enhance its structure, and increase its SOC content (Oksana et al., 2022; Plaza et al., 2016). The straw return has been demonstrated to be an effective approach for promoting SOC stabilization, improving soil aggregation, and influencing the structure of microbial communities by using the organic amendment to promote (Xiu et al., 2019). However, direct straw return frequently causes problems, such as creating an adverse soil environment for crop sowing, root elongation (Li et al., 2019) and increasing the number of disease-causing pests and weeds (Wang et al., 2011) during the subsequent growing season. This possibly resulted from the low decomposition rate of returning straw due to long soil freeze durations, especially at higher latitudes in cold Chinese Mollisols with straw decomposition durations of a quarter to one year (Wang et al., 2011). Therefore, developing proper straw returns that can increase soil productivity has been a major challenge in this context. Biochar is produced by pyrolyzing biomass at 400–700°C in an oxygen-depleted environment (Xiu et al., 2019; Kung et al., 2015). The method has been promoted as a win-win

technology for recycling straw while also potentially improving agricultural soils (Islam et al., 2021). Biochar can enhance SOC storage, soil granular structure, and cation exchange capacity (Hu et al., 2020, Mete et al., 2015). For example, Wang et al. (2019) discovered that biochar improved the structural stability of Latosols in southern China. The aggregate mean weight diameter (MWD) and geometric mean diameter (GMD) was improved by 36.3 and 28.3%, respectively. Furthermore, Xiu et al. (2019) investigated the effect of corn stalk biochar application dose on Albic soils in northern. They discovered that a high biochar application level reduced the bulk density of Albic soils by 9.93% while increasing the pH value. Biochar was also found to significantly improve soil granular structure and organic carbon aggregation (Li et al., 2022). Thus, biochar had a favorable influence on soil quality and aggregation in these acidic soils, which could be attributed to the liming activity of biochar treatments on those acidic soils and the neutralization of the soil pH, which consequently had a significant effect on soil aggregation (Islam et al., 2021). However, there are still some researchers who believe that there is no significant effect (Zhang et al., 2015). Due to the low quantity of biochar minerals and inorganic nitrogen, several studies have indicated that only combination application with other fertilizers can improve soil fertility (Song et al., 2020). Chen et al. (2018) proposed that an 8-year manure amendment could recover soil nitrogen supplying capacity of lightly eroded Mollisols to natural levels. Fungo et al. (2017) conducted a two-year field trial in the impoverished Ultisol of western Kenya and found that biochar combined with urea increased MWD by 13%, whereas biochar alone was less effective. Biochar combined with an organic/inorganic fertilizer has the potential to improve soil fertility (Li et al., 2020), promote plant growth (Aneseyee et al., 2021; Mete et al., 2015), and carbon storage potential (Wang et al., 2019). Despite these benefits, a quantitative understanding is scarce of how combined effects between biochar and nitrogen fertilizer contribute to soil fertility by modifying microbe-soil interactions in agroecosystems.

Principal ecological activities in soil, including organic matter formation and decomposition, nutrient cycling, and soil aggregate size redistribution are all controlled by soil microbial populations (Chen et al., 2022; Trivedi et al., 2017). Phospholipid fatty acids (PLFAs) are the main components of living cell membranes, which play an important role in maintaining cellular fluids, nutrient transportation, elimination of metabolites, etc. Changes in their components can more accurately express the response

of soil microbial biomass and community structure to environmental disturbances (Zhang et al., 2013).

85 The structure of the microbial community is closely related to the change in soil function (Ng et al., 2014). The higher the ratio of soil fungal to bacterial fatty acids, the more sustainable and stable the soil ecosystem (Wang et al., 2017). High  $Gm^+/Gm^-$  bacterial ratios facilitate soil organic carbon accumulation. Soil total nitrogen (TN) content is the main driver of variations in the community composition (Zhang et al., 2021). Wang et al. (2021) discovered that after using biochar in rice fields, 90 the abundance of bacteria (B) and fungi (F) increased by 102 and 178%, respectively, which was likely related to an increase in soil total organic carbon (TOC), TN, and rice biomass. According to the study of Chen et al. (2018), the improvement of microbial community structure by biochar was determined by the  $Gm^+/Gm^-$  and F/B in the paddy soil of central-southern China. In addition, Tian et al. (2016) investigated the mechanism of combined effects between biochar and fertilizer addition on microbial 95 community and soil organic matter cycling in heavy loam soil. It was found that the addition of biochar alone did not significantly improve microbial community structure and that its effect on microbial community structure was dependent on fertilization. The ability of biochar and nitrogen fertilizer to stimulate microbial activity is regulated by the soil conditions and application rates (Palansooriya et al., 2019).

100 Soil organic carbon sequestration and microbial activity are critical for soil health and quality regulation. However, the beneficial effects of biochar on soil aggregate, associated SOC, and microbial activity have been observed primarily in nutrient-poor acidic soils (e.g. Ultisol and Albic soils), and relevant studies on Mollisols in Northeast China have been limited. Furthermore, studies on the combined application of biochar and nitrogen fertilizer are insufficient, limiting the scope of production practice and theory.

105 Therefore, this study using the northeast Mollisols as a pilot, the objectives are to (1) explore the effects of three biochar gradients combined with N fertilizer on the size, proportion, stability, and carbon content of Mollisols aggregates; (2) explore the influence mechanism of biochar on microbial population structure and identify the major determinants for microbial community composition changes; (3) develop scientific and effective field management measures for Mollisols by improving the structure of soil 110 aggregates and microbial communities.

## 2 Materials and methods

### 2.1 Site description

The field experimental site was located at the test base of the Northeast Institute of Geography and Agroecology, Jilin Province (43° 59' 51" N, 125° 24' 5" E). The annual average temperature is 4.6°C, the precipitation is 600–700 mm, and the frost-free period during the whole year is 140–150 d. For many years, continuous maize cropping has been carried out in conventional tillage patterns. The soil of the field was classified as Mollisols (Mei et al., 2021). The experimental soil pH was approximately 6.06, TN was 1.26 g kg<sup>-1</sup>, available phosphorus was 26.78 mg kg<sup>-1</sup>, available potassium was 133.54 mg kg<sup>-1</sup>, and organic matter was 26.72 g kg<sup>-1</sup>. The biochar was created by pyrolyzing corn straw at 400–500°C for 4 h under anaerobic conditions. The biochar had a mean particle diameter of 0.003–3.5 mm, a surface area per volume of 0.7 m<sup>2</sup> g<sup>-1</sup>, and an ash concentration of 45% (Biochar particles need to pass through a 2 mm sieve before application). Also, the biochar with a pH of 9.16, the total carbon content was 62.64%, and the C/N was 39.08. The fertilizer was high-quality urea that was produced by Erdos Yi Ding Ecological Agriculture Development Co. Ltd., the TN was ≥ 46%, and the particle size range was 1.18–3.35 mm.

### 2.2 Field experimental design

A split zone design was adopted for the field experiment and three biochar input levels were set: 9.8 Mg ha<sup>-1</sup> (C1), 19.6 Mg ha<sup>-1</sup> (C2), and 29.4 Mg ha<sup>-1</sup> (C3). Nitrogen was applied as a basal fertilizer at rates of 300 kg N ha<sup>-1</sup> (N1/2) and 600 kg N ha<sup>-1</sup> (N). The CK treatment was used as a control. In total, ten treatments were studied: CK, C1, C2, C3, C1N1/2, C2N1/2, C3N1/2, C1N, C2N, and C3N. Each treatment was performed on a plot with the dimensions 3.9 × 6.5 m, and each treatment plot had a 1 m buffering zone. A randomized block design was used to conduct the three replicate plots. Biochar with N fertilizer was applied to the soil in April 2013 and 2021, and corn was sown in May 2013 and 2021.

### 2.3 Soil bulk density and water content

On October 29, 2021, after the corn harvest was complete, soil samples were obtained from each plot using the five-point sampling method, which involved taking 1 kg of soil samples from each plot. Undisturbed soil columns were collected using a soil drill and were placed into ziplocked bags after the

removal of plant and animal residues. Some of the soil was promptly refrigerated at 4°C for PLFA measurement. A 5 mm mesh screen was used to remove the water-stable soil aggregates from the rest of the sample, which was then allowed to dry naturally. For the determination of the bulk TOC, subsamples of 2 mm soil particles were passed through a 0.15 mm filter after being air-dried. The TOC in the aggregate fractions was determined by K<sub>2</sub>Cr<sub>2</sub>O<sub>7</sub> titration (Chen et al., 2018). Next, the surface (0–10 cm) and bottom (10–20 cm, 20–40 cm) soils were sampled with a cutting ring ( $V = 100 \text{ cm}^3$ ) and dried at 105 °C for 24 h to measure the soil bulk density and water content using the following formulae:

$$X = \frac{m_2 - m_1}{m} \times 100\% \quad (1)$$

$$\rho_b = \frac{m}{V} \quad (2)$$

where  $X$  is the field water holding capacity (%),  $\rho_b$  is the soil bulk density ( $\text{g cm}^{-3}$ ),  $m$  is the dry soil weight (g),  $V$  is the cutting ring volume ( $\text{cm}^3$ ),  $m_2$  is the total weight of the cutting ring and soil after 2 h on dry sand, and  $m_1$  is the total weight of the cutting ring and soil after drying.

## 2.4 Soil water-stable aggregate analysis and calculation

In this experiment, the soil aggregates were fractionated utilizing a modified version of the wet sieving method which was given by Zhang et al. (2018). The dry soil sample (100 g) was uniformly coated on automatic vibrating sleeve screens of 2, 0.25, and 0.053 mm in diameter.

The formula for calculating the mass fraction of the water-stable aggregates is as follows:

$$W_t = \frac{M_i}{M_t} \times 100\% \quad (3)$$

where  $W_t$  is the percentage of the component weight of the  $i$ th-sized aggregate.

The MWD and GMD represent the size distribution of the soil aggregates. The larger the values, the more stable the aggregates. The formulas are as follows:

$$\text{MWD} = \sum X_j W_j \quad (4)$$

$$\text{GMD} = \text{Exp} \left[ \frac{\sum_{i=1}^n (M_i \ln X_i)}{\sum_{i=1}^n M_i} \right] \quad (5)$$

where  $j$  is the aggregate size,  $X_j$  is the average diameter of the particle size,  $W_j$  is the ratio of the aggregate sample weight of each particle size on the screen,  $X_i$  is the average diameter of a size  $i$  aggregate,  $M_i$  is

the weight of a size  $i$  aggregate, and  $M_t$  is the total weight of all the aggregates. The aggregate content was determined as follows:

$$R_{0.25} = \frac{M_{r>0.25}}{M_T} \quad (6)$$

where  $R_{0.25}$  is the aggregate content (%) with an aggregate size of  $> 0.25$  mm,  $M_{r>0.25}$  is the weight of the soil aggregate that is  $> 0.25$  mm, and  $M_T$  is the total weight of all the aggregate fractions.

The formula for the soil carbon contribution rate of each aggregate grain size is as follows:

$$C_c = \frac{w_i \times C_i}{C_s} \times 100\% \quad (7)$$

where  $C_c$  represents the contribution rate of each particle size aggregate to the carbon level in the soil sample,  $w_i$  is the weight percent (%) of the  $i$ -sized aggregate component,  $C_i$  is the organic carbon content of the soil aggregate at size  $i$ , and  $C_s$  represents the soil TOC content.

## 2.5 Phospholipid fatty acid analyses

The PLFA extraction method used in this study was described by Luo et al. (2017). The nonadecanoic acid methyl ester (19:0) was employed as an endogenous control. The identified PLFAs were classified into specific microbiota: bacteria (i15:0, a15:0, 15:0, i16:0, 16:1 ω5, 16:1 ω9, i17:0, 17:0, a17:0, cy17:0, and cy19:0); fungi (18:2ω6c and 18:3ω6c); actinomycetes (16:1ω7c, 17:1ω8c, and 18:1ω7c);  $Gm^+$  bacteria (i14:0, a15:0, i15:0, i16:0, a17:0, and i17:0); and  $Gm^-$  bacteria (16:1ω7c, 16:1ω9c, cy17:0, 17:1ω8c, 18:1ω7c, and cy19:0) (Luo et al., 2017).

The concentration of the target PLFAs in the sample was calculated as follows:

$$C_{PLFA} = \frac{F_{PLFA}}{F_{IS}} \times \frac{C_{IS}}{M_{PLFA}} \times \frac{V}{m} \quad (8)$$

where  $C_{PLFA}$  is the concentration of the target PLFA ( $nmol\ g^{-1}$ ),  $F_{PLFA}$  is the peak area for the PLFAs,  $F_{IS}$  is the area of the internal standard peak,  $C_{IS}$  is the internal standard concentration ( $25\ ng\ \mu l^{-1}$ ),  $M_{PLFA}$  is the molecular weight of the target PLFA,  $V$  is the sample dissolution volume ( $120\ \mu l$ ), and  $m$  is the soil weight ( $4\ g$ ).

## 2.6 Statistical analyses

IBM Statistics SPSS 22.0 software was used to test the data normality, homogeneity and principal

component analysis (PCA). Significant differences among treatments were calculated by Duncan's Multiple Range test with  $P < 0.05$ . If the data did not meet the criteria, a nonparametric Kruskal-Wallis test was performed to determine the statistical significance. Two-way ANOVA was conducted on a subset of treatments to examine the effects of biochar and organic fertilizer on bulk density, soil water content, soil aggregates, C storage and microbial community abundance. Canoco 5 (Windows Release 5.02 trial version) software was used for redundancy analysis (RDA).

### 3 Results

#### 3.1 Soil physical properties

The biochar had a substantial impact on the soil (0–10 cm) bulk density ( $P < 0.05$ ; Fig. 1), but its coupling effect with N fertilizer was not significant. Also, soil bulk density showed distinct regularities in all profiles and increased with soil depth. The C2N1/2 treatment had the greatest improvement effect of all treatments, and the soil bulk densities of the 0–10, 10–20, and 20–40 cm layers decreased by 13.00%, 8.62%, and 2.94%, respectively. The surface soil (0–10 cm) had the highest moisture content under the CK treatment, while the 10–20 cm soil had the lowest water content. Additionally, there was a substantial positive relationship between biochar application amount and the soil water content in the profile ( $P < 0.01$ ; Fig. 1), with the C3 treatment improving the most when compared to the CK. Furthermore, the soil moisture content increased by 15.12%–35.39%. The two-factor ANOVA (Table S1) showed that biochar significantly improved soil water content ( $P < 0.01$ ) and that biochar contributed significantly to soil bulk density and water content.



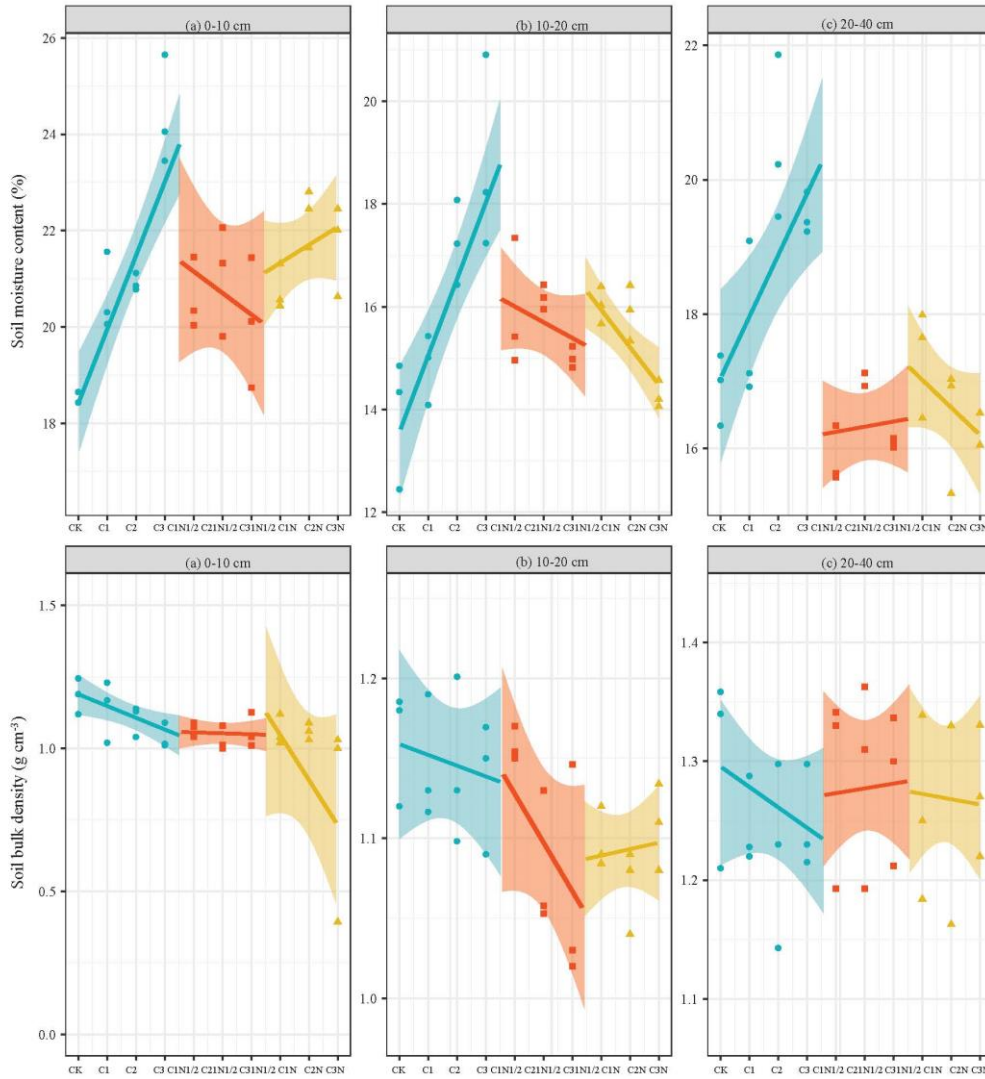


Figure 1: The effects of biochar and nitrogen fertilizer on the soil bulk density and soil moisture content in the soil profile.

### 3.2 Soil aggregation

The proportions of soil aggregates in descending order were as follows: microaggregates (0.053–0.25 mm), small aggregates (0.25–2 mm), silt and clay (< 0.053 mm), and large aggregates (> 2 mm; Fig. 2). First, the number of large aggregates fractions was lower in the 20–40 cm soil layer than in the 0–10 cm soil layer. Second, the biochar considerably increased the percentage of large aggregates (11.59%–50.40%) while decreasing the percentage of < 0.053 mm aggregates (5.12%–38.66%). Third, biochar combined with N fertilizer had a synergistic effect, and the proportion of large aggregates continued to increase (38.98%–56.59%) before stabilizing.

According to the interactive analyses, N fertilizer had a greater effect on the fraction of large aggregates

in the profile (Table S2). The C2N treatment increased the > 2 and 0.25–2 mm fractions of soil aggregates by 56.59% and 23.41%, respectively. Furthermore, the proportions of aggregates 0.053–0.025 and < 0.053 mm decreased by 4.09% and 43.64%, respectively. The C2N treatment had the highest growth rate of large aggregates within the 0–10 cm layer, which was 3.66 and 20.16% higher than that of the C2N1/2 and C2 treatments, respectively. Furthermore, as soil depth increased, the water-stable aggregates were gradually replaced with 0.053–0.25 mm sized aggregates (35.95%–46.42%).

The MWD, GMD, and  $R_{0.25}$  values increased significantly as the biochar addition ratios increased (Fig. 3). The increasing trend in the stability index was more noticeable after the application of biochar together with fertilizer. Additionally, the  $R_{0.25}$  values of the 0–10, 10–20, and 20–40 cm soil layers increased by 30.33%, 57.90%, and 17.70%, respectively, and the MWD increased by 28.22%, 50.37%, and 46.01%, respectively in this treatment. The GMD then increased by 18.32%, 29.43%, and 17.71%, respectively.

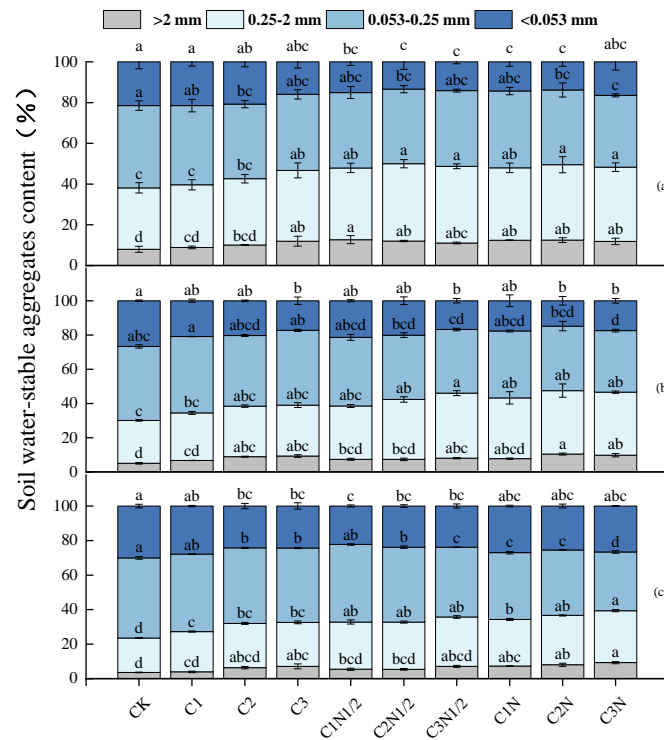


Figure 2: The size distribution of the soil aggregates at 0–10 cm (a), 10–20 cm (b), and 20–40 cm (c). The letters indicate significant differences among various treatments ( $P < 0.05$ ). The bars indicate the standard error.

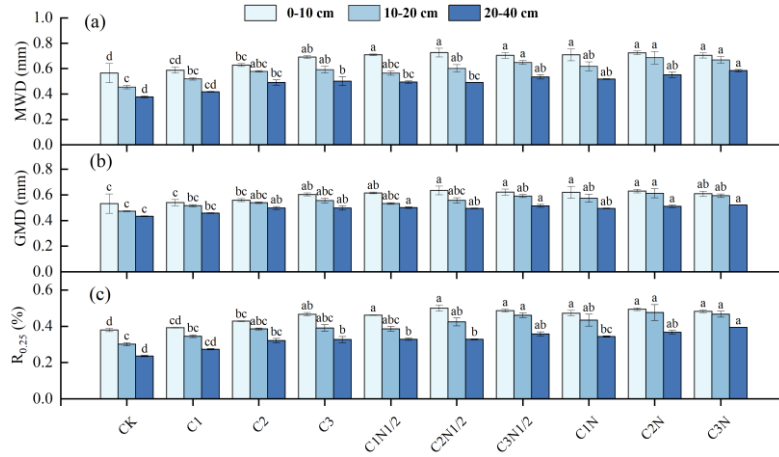


Figure 3: The aggregate content with an aggregate size of > 0.25 mm ( $R_{0.25}$ ), mean weight diameter (MWD), and geometric mean diameter (GMD) of the soil aggregates under different treatments. The letters indicate significant differences between the various treatments ( $P < 0.05$ ). The bars indicate the standard error.

### 3.3 Total organic carbon distribution in the bulk soil and aggregate fractions

The average TOC content of the surface layer was 20.26% higher than that of the 20–40 cm soil layer (Fig 4). The TOC content was significantly correlated with the application rates of the biochar and nitrogen fertilizer ( $P < 0.01$ ). Among all the treatments, the C3N treatment in comparison to the CK resulted in the greatest increase in organic carbon content, and the TOC increased by 35.59%, 30.62%, and 29.53% in the soil profile from surface to bottom.

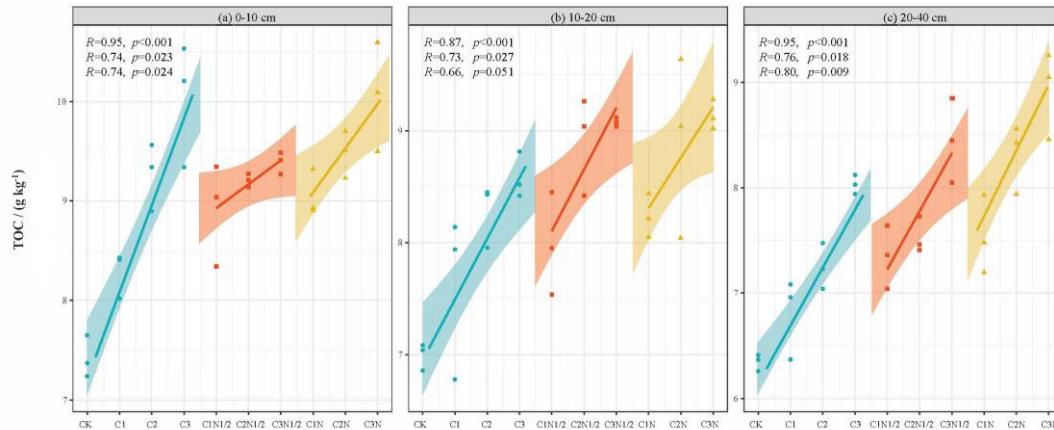


Figure 4: The total organic carbon (TOC) of the soil profile under different treatments.

The TOC was significantly associated with aggregate fractions of > 2 mm and 0.25–2 mm but inversely associated with fractions of 0.25–0.053 mm and 0.053 mm aggregates (Fig. 5). We also compared the TOC of the particle size components of the various aggregates under different biochar treatments (Fig. 6 a, b, and c) and found that large aggregates had higher carbon content than microaggregates. The C3N1/2

treatment increased the TOC content in the > 2 mm, 2–0.25 mm, 0.25–0.053 mm, and < 0.053 mm fractions by 36.89%, 20.39%, 15.41%, and 16.14% respectively ( $P < 0.05$ ). Furthermore, the 0.25–2 mm aggregate fractions contributed the most to TOC, followed by the > 2 mm fractions (Fig. 6 d, e, and f). There was no significant change in the contribution of biochar with full N fertilizer (N) to TOC compared to biochar with reduced N fertilizer (N1/2) treatment.

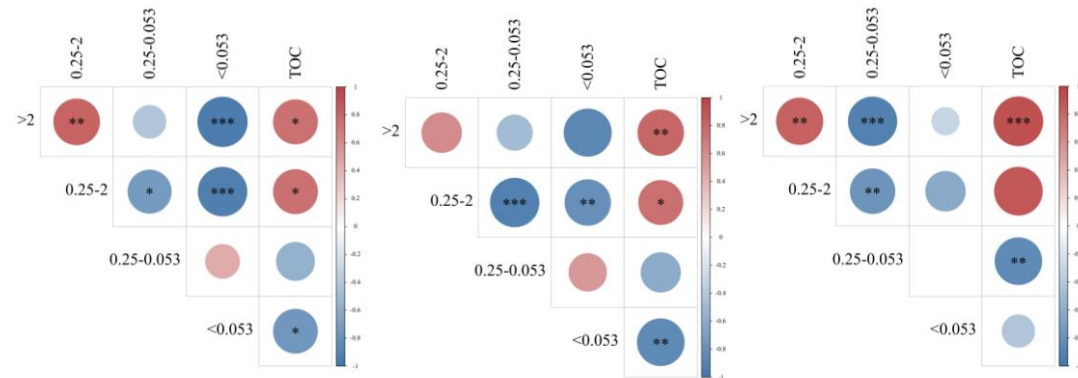


Figure 5: The correlation between the total organic carbon (TOC) and the aggregate contents of the different particle sizes in the soil profile (from left to right: 0–10 cm, 10–20 cm, and 20–40 cm). \*\*\* ( $P < 0.001$ ), \*\* ( $P < 0.01$ ), \* ( $P < 0.05$ )

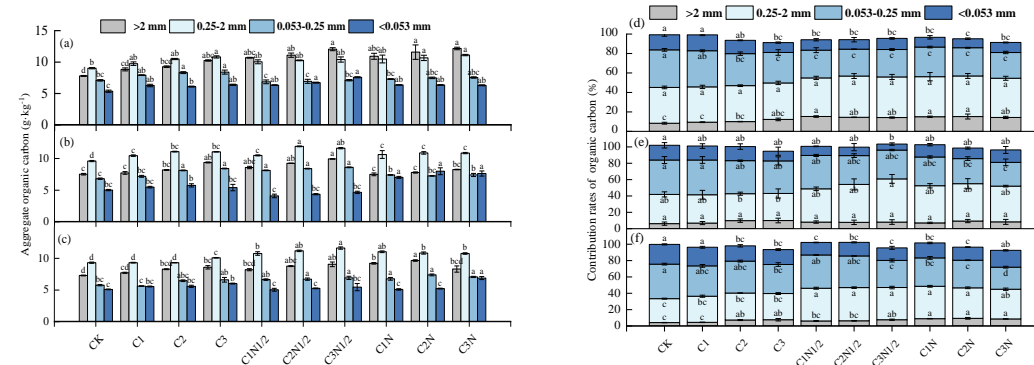


Figure 6: The total organic carbon (TOC) levels of the four aggregate fractions: (a) 0–10 cm, (b) 10–20 cm, and (c) 20–40 cm; the contribution rates of the aggregate fractions to the TOC: (d) 0–10 cm, (e) 10–20 cm, and (f) 20–40 cm. The letters indicate significant differences among various treatments ( $P < 0.05$ ) for a given aggregate fraction. The bars indicate the standard error.

### 3.4 Microbial community structure

The PLFAs of microorganisms (i.e., bacteria, fungi, actinomycetes,  $Gm^+$  bacteria, and  $Gm^-$  bacteria) in the soil were identified (Fig. 7). The biochar treatment resulted in the highest increases in F/B and  $Gm^+/Gm^-$  proportions of 28.17 and 7.91%, respectively (Fig. 7 g and h). Also, the two-factor ANOVA (Table S3) showed that N fertilizer effectively altered the abundance of microorganisms, except for fungi

and  $G_m^-$  bacteria ( $P < 0.05$ ). The abundances of the bacteria, fungi, actinomycetes,  $G_m^+$ , and  $G_m^-$  in the C2N1/2 treatment increased by 41.89%, 61.75%, 75.40%, 25.46%, and 19.74%, respectively. The total PLFAs increased by 52.34%.

The RDA was performed to determine the relationship between soil environmental change and the PLFA response variables (Fig. 8). The two RDA axes were significant ( $P < 0.05$ ), accounted for 94.12% of the overall variation in the soil microbial characteristics. Soil bulk density was the most significant variable, accounting for 62.61% of the microbial community characteristics, followed by MWD, soil moisture, TOC,  $R_{0.25}$ , and GMD, all of which were significantly correlated with the microbial community composition and explained 15.90%, 13.42%, 4.01%, 2.83%, and 1.28% of the various rates of microbial PLFAs, respectively.

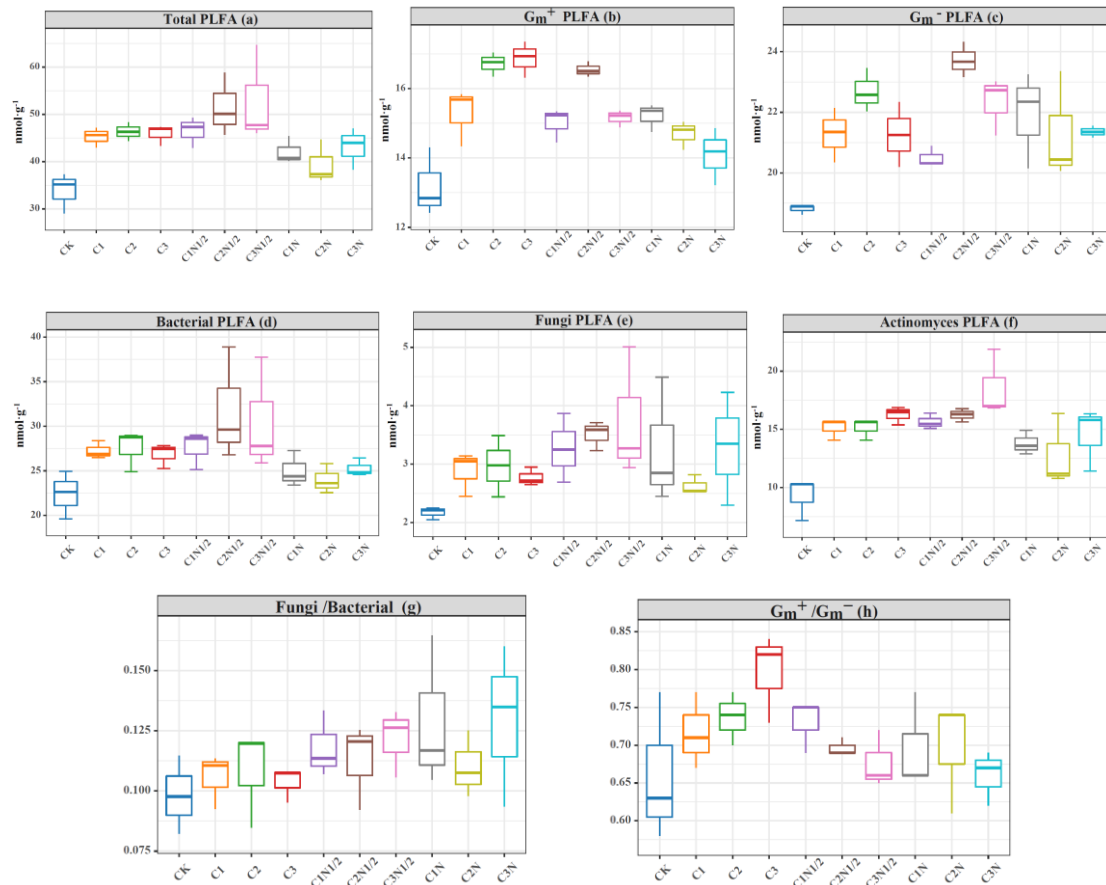


Figure 7: The concentration of the (a) total phospholipid fatty acids (PLFAs;  $nmol\ g^{-1}$ ), (b) gram-positive bacteria ( $G_m^+$ ) PLFAs, (c) gram-negative bacteria ( $G_m^-$ ) PLFAs, (d) bacteria PLFAs, (e) fungi PLFAs, (f) actinomycetes PLFAs, (g) ratio of the bacteria PLFAs/fungi PLFAs (F/B), and (h) ratio of the  $G_m^+$  to  $G_m^-$  bacteria of the microbial community in the soils under the treatments.

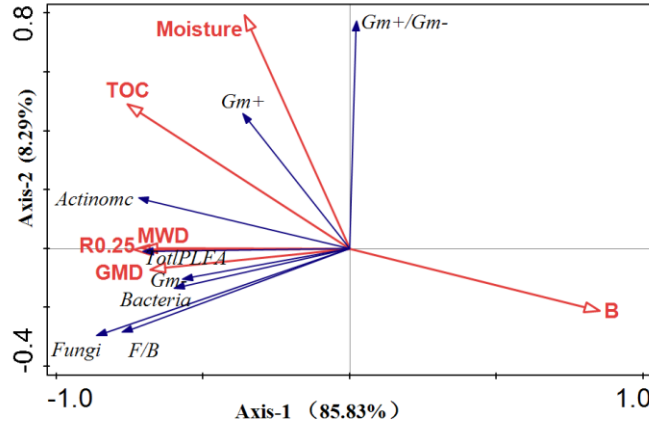


Figure 8: A redundancy analysis was used to clarify the relationship between the soil parameter variables and microbial communities. The red arrows represent the explanatory variables (soil physicochemical properties), and the blue vectors represent the response variables (phospholipid fatty acid biomass).

The PCA was used to evaluate the effects of various treatments on the soil traits in Northeast China (Table 1, Table S4). The results showed that the first 3 principal components (F1-F3) explained 90.13% of the total variance. The higher the F value, the better the improvement effect, and the C2N1/2 treatment was optimal.

The expression of the principal component is as follows:

$$F_1 = 0.27X_1 + 0.31X_2 + 0.31X_3 + 0.30X_4 + 0.23X_5 + 0.23X_6 + 0.27X_7 + 0.08X_8 + 0.31X_9 + 0.33X_{10} + 0.32X_{11} + 0.31X_{12} - 0.35X_{13} + 0.20X_{14} \quad (9)$$

$$F_2 = 0.25X_1 - 0.09X_2 + 0.22X_3 + 0.22X_4 - 0.38X_5 + 0.45X_6 + 0.16X_7 + 0.46X_8 - 0.05X_9 - 0.24X_{10} - 0.25X_{11} - 0.27X_{12} + 0.15X_{13} + 0.16X_{14} \quad (10)$$

$$F_3 = 0.34X_1 + 0.35X_2 + 0.20X_3 + 0.29X_4 + 0.14X_5 - 0.09X_6 + 0.21X_7 - 0.36X_8 - 0.28X_9 - 0.13X_{10} - 0.16X_{11} - 0.13X_{12} + 0.19X_{13} - 0.52X_{14} \quad (11)$$

$$F = \frac{56.52\%}{90.13\%} \times F_1 + \frac{18.41\%}{90.13\%} \times F_2 + \frac{15.20\%}{90.13\%} \times F_3 \quad (12)$$

where  $X_1$ – $X_{14}$  represent the bacteria PLFAs, fungi PLFAs, actinomycetes PLFAs, total PLFAs, F/B,  $Gm^+$ ,  $Gm^-$ ,  $Gm^+/Gm^-$ , TOC,  $R_{0.25}$ , MWD, GMD, B, and soil moisture, respectively.

Table 1 The principal component evaluation values and comprehensive evaluation values.

Treatments	F <sub>1</sub>	F <sub>2</sub>	F <sub>3</sub>	F	Rank
CK	-7.03	-0.53	0.32	-4.46	10
C1	-2.45	1.78	1.04	-1.00	9

C2	-0.17	2.11	0.42	0.39	4
C3	1.52	2.12	-2.74	0.92	3
C1N1/2	0.55	-0.36	0.12	0.29	5
C2N1/2	3.47	0.68	0.85	2.46	1
C3N1/2	2.59	-0.44	2.35	1.93	2
C1N	0.61	-1.50	-0.06	0.06	7
C2N	-0.13	-1.48	-1.98	-0.72	8
C3N	1.06	-2.36	-0.32	0.13	6

## 4 Discussion

### 4.1 The effects of the biochar and nitrogen fertilizer treatments on soil physical properties

Soil compaction often makes soil structure destroying and soil degrading which is not conducive to the transport of water, air and solutes in the soil and the propagation of soil microorganisms (Gaia et al., 2020). Our results demonstrated that soil bulk density had a negative correlation with biochar application rate. The C3 treatment reduced soil bulk density by up to 12.69% (Fig. 1). The bottom soil bulk density was on average 18.88% higher than that of the surface soil by the biochar amendment, though the improvement in the bottom soil bulk density was not significant ( $P > 0.05$ ), which are consistent with Xiu et al. (2019). This trend might be due to the unique properties of biochar, such as complex microporous structure, large specific surface area, and light texture, et al. (Zhang et al., 2015). The biochar had a slow and gradual effect on the soil improvement. According to Chaganti et al. (2015), the biochar in the soil will gradually migrate to the lower soil over time due to natural factors and human activities. Also, Luo et al. (2020) concluded that biochar was often applied to the surface layer, resulting in a greater decline in the bulk density of the surface soil than the underlying soil. This suggests that biochar has a great benefit in ameliorating soil compaction problems in modern agriculture. Our study also found a considerably strong correlation between the soil water content of the Mollisols and the amount of biochar applied, particularly in the surface soil. The soil water content gradually increased with increasing rate of biochar application. This improvement was the largest during the single application of biochar, with an average increase of 18.07%. The two-factor ANOVA showed that the increase in soil water content was mainly attributed to biochar, though there was also a synergistic effect

of biochar and nitrogen fertilizer on the increase in soil moisture content (Table S1). An et al. (2022) explained this phenomenon by CT scanning techniques, where the addition of biochar reduced soil porosity, reduced pore size and increased water retention, meaning that water was stored in the smaller pores of the soil and drainage was delayed. The porosity, hydrophilic domains, and huge specific surface area of biochar may be favorable the improvement of water retention (Leonard et al., 2014). However, some studies contradicted this study, and found either reduced water retention capacity (Madari et al., 2017) or no effect (Baiamonte et al., 2015) after biochar application. The variation in the actions may be attributed to biochar properties, soil texture type, climate change, and experimental design and duration. The input of biochar combined with N fertilizer actively participates in the formation of soil large aggregates, which enhances the soil water-holding capacity and alleviates soil erosion by improving the soil aggregate structure (Gaia et al., 2020; Islam et al., 2021).

#### **4.2 The effects of biochar and nitrogen fertilizer on soil aggregate distribution and stability**

Soil aggregate is essential for the performance of soil functions and is primarily responsible for the formation of the soil structure (Zhang et al., 2018). In this study, biochar increased the formation of large aggregates ( $> 0.25$  mm), especially small aggregates (0.25–2 mm), but decreased the number of microaggregates in Mollisols. Grunwald et al. (2016) also confirmed this point by treating Haplic Phaeozem and Gleyic Luvisol with biochar in field experiments. Our findings showed that when biochar was combined with N fertilizer, the fraction of large aggregates steadily increased while the content of the microaggregates and clay particles decreased (Fig. 2). This suggests that surface hydrophobic-hydrophilic interactions between clay minerals and biochar particles, as well as the biochar ability to integrate with the soil biota, and labile carbon, may all contribute to soil aggregation (Joseph et al., 2010). Furthermore, surface area, microporous structure, and O/C ratio are key biochar features for binding to organo-mineral complexes, an initial stage in aggregate formation and stability (Du et al., 2017). According to the findings of this study, the soil aggregate stability increased by 10.9–23.49%, which is consistent with the findings of a meta-analysis (Peng et al., 2015). The initial low TOC level ( $26.72 \text{ g kg}^{-1}$ ) and protracted field experiments (8 years) could explain this. In a laboratory incubation experiment, biochar application increased soil aggregate stability by 2.33%–6.55% in Albic soil soils of northeast China (Xiu et al., 2019). Our data showed that biochar improves the agglomeration of Mollisols better



than Albic soil. According to the MWD (Fig. 3), increased TOC and microbial biomass (Fig. 7) were responsible for the significant increase in aggregation caused by biochar addition. This was also found to be the case in other studies, which found that biochar served as a cementing material, assisting more microaggregates, silt, and clay components to cement together into large aggregates (Xu et al., 2019). The relationship between N input and aggregation can be explained by three possible aspects. Firstly, N fertilizer increased macro-aggregates and MWD stemmed from N-stimulation of root growth (Bai et al., 2021). Roots are a major driver of soil aggregation as they not only constitute the primary source of SOC, but also function as physical binding agents for aggregation (Sokol and Bradford, 2019); Second, the N-increase of plant photosynthesis generally allows plants to allocate more photosynthates to the roots and their associated mycorrhizal fungi, which may physically facilitate the formation of soil macroaggregate through fine root and hyphal enmeshment of microaggregates (Miller and Jastrow, 1990; Bai et al., 2021); Third, the active functional groups in the N fertilizer adsorb soil  $\text{Ca}^{2+}$  and then tend to combine with clay minerals to form a clay-humus complex (Gao et al., 2019). Thus, biochar and N fertilizer application have a longer-term positive influence on aggregate stability. At the same time, it provides a theoretical basis for preventing the thinning of the humus layer and reducing surface runoff and soil erosion (Grunwald et al., 2016). Our findings were in contrast with those of Zhou et al. (2019), who discovered neutral or even antagonistic effects on soil aggregate formation and stabilization due to fewer binding agents produced during the decomposition of recalcitrant biochar. Therefore, the response of soil aggregates to biochar is influenced by the initial TOC, clay content, biochar attributes, application rate, etc. (Peng et al., 2015). As a result, the evaluation results should be thoroughly examined, considering these factors as well as the effect of time in the field.

According to a two-factor ANOVA (Table S2), there was a synergistic effect of biochar blend with nitrogen fertilizer on increasing the proportion of soil large aggregates, which suggests that biochar with organic fertilizer is beneficial for the stability of soil aggregates. Previous research proposed that biochar combined with N fertilizer promotes crop root growth, improves crop root fungi reproductive capacity. Fungal hyphae and root secretions promote soil aggregate by binding and entangling mineral particles to form large aggregates structures (Islam et al., 2021). Consistently, our data suggest that the increased stability of aggregate results from increased root activity and the significant role of exogenous carbon as

a binder for soil particles (Wang et al., 2019).

#### 4.3 The effects of biochar combined with nitrogen fertilizer on the total organic carbon

In this investigation, the TOC level of the Mollisols increased significantly following biochar application, which is consistent with the results of Dong et al. (2016). More recently, Shi et al. (2020) proposed that the combined application of biochar and nitrogen fertilizer was conducive to soil carbon sequestration, with the cumulative mineralization rate of TOC decreasing by 0.6–1.1% when compared to the CK treatment. These findings can be interpreted in three ways. First, the use of biochar increased soil microbial activity (Fig. 7) and crop yields (Lin et al., 2020), thereby promoting further degradation and transformation of the plant residues, increasing TOC. Second, when added to the soil, biochar with a high organic carbon concentration (34.9%) directly improved the soil's organic matter content. Xiu et al. (2019) found similar results in Albic soil. Third, the enrichment phenomenon of the organic carbon occluded within the large aggregates and small aggregates (Fig. 5, 6) were higher than that in the microaggregates. Increasing the proportion of large aggregates promoted soil aggregate carbon fixation (Zhang et al., 2018). The fourth explanation is that biochar has a high inert carbon content, which increased the  $G_m^+/G_m^-$  (Fig. 7) in the decomposition of persistent and complex substrates, indicating that carbon accumulation was greater than carbon decomposition (Dong et al., 2020). Thus, biochar effectively prevented the bulk TOC in the Mollisols from decreasing.

In this study, the TOC concentration was positively correlated with the proportion of large aggregate size (Fig. 5), which is consistent with the aggregate hierarchy model proposed by Tisdall (1982). Figure 6 shows that the  $> 0.053$  mm fractions had a much higher carbon content than silt and clay, especially in the 0.25–2 mm fraction. Our findings confirmed those of Du et al. (2017) and Dong et al. (2016).

These results showed that the combined application of biochar and half amount of N fertilizer was more economically efficient. Under the treatment, the carbon of the  $< 0.053$  mm aggregates in the 0–20 and 20–40 cm soil layers decreased significantly, which could be explained by the finding of Ying (2018) that N fertilization promoted the mineralization rates of primary organic carbon by affecting the soil microbial community. Overall, there was no advantage in increasing the organic carbon content of the soil aggregates from the increased N fertilizer ration. This could be due to the high N content, which caused an imbalance in the soil C/N ratio, affecting the breakdown and turnover of soil organic matter

(Kimetu et al., 2010). Therefore, biochar in combination with nitrogen fertilizer as amendments effectively improve the soil aggregates and carbon sequestration.

#### **4.4 The effects of biochar combined with nitrogen fertilizer on microbial community biomass and structure**

Biochar can alleviate the negative effects of soil structure and function degradation on soil microbial activities, particularly when applied in conjunction with nitrogen fertilizer (Oksana et al., 2022).

According published research biochar addition alone did not change the microbial community structure

in spring maize fields or rice paddy fields, but when combined with fertilizer, the structure was changed (Luo et al., 2017; Tian et al., 2016). These findings are consistent with our experimental results. Soil F/B and total PLFA contents were significantly increased following biochar and N fertilizer treatments, which may be accompanied by increased C and N cycling and mineralization rates (Khadem et al., 2021). The higher the ratio of PLFA of soil fungi to bacteria, the more stable the soil ecosystem (Thiet et al., 2006).

Compared to  $Gm^-$  bacteria,  $Gm^+$  bacteria generally possess a greater proportion of peptidoglycan, which is a relatively decay-resistant soil organic matter (Zhang et al., 2013). The high  $Gm^+/Gm^-$  bacteria ratio means that SOC accumulation is higher than mineralization (Wang et al., 2017). Therefore, the effect of biochar and organic fertilizer application on microbial community structure may be more inclined to the retention of easily decomposed organic carbon in northeast Mollisols (Jiang et al., 2016). In this study, C2N1/2 treatment had the best improvement effect on microbial community structure. However, when N fertilizer application exceeds crop absorption capacity and soil retention capacity, the excess N may be leached to deep soil and pollute groundwater. Meanwhile, the unbalanced C/N ratio also became the main factor for the significant decline of soil biodiversity (Yuan et al., 2017).

The RDA showed that the biomass of fungi, bacteria, actinomycetes,  $Gm^+$ , and  $Gm^-$  was positively related to the fraction of large aggregates and negatively linked to the soil bulk density. The increased fungal abundance has been proposed as an important biological factor in soil aggregate formation (Yuan et al., 2015; Zheng et al., 2020). Previous research has shown that aggregate stability and carbon storage are important prerequisites for enhancing microbial communities (Zhang et al., 2021). Our results showed that the mutual effects of biochar and reduced N fertilizer could effectively affect the abundance of microorganisms, which is attributed to the increased soil C/N content as a result of the applied N

fertilizer providing more N sources for microbial decomposition and organic matter utilization (Jia et al., 2020). These findings were consistent with those of Zhang et al. (2021), who discovered that combining biochar with fertilizer significantly increased microbial abundance in the soil sample, implying that the addition of inorganic fertilizer reduced crop N limitation and microbial N immobilization. Furthermore, the TOC and C/N affected the fungal community composition, most likely because fungi were the primary decomposers of TOC (Chen et al., 2013). This conclusion is further confirmed by Sekaran et al. (2019), who found that the amount of soil microbial PLFAs and the ratio of soil carbon to nitrogen were strongly and positively correlated, but biochar and a full dose of N fertilizer had little effect. Based on the sequestration of SOC and the sustainability and stability of the ecosystem, we selected C2N1/2 as the most reasonable biochar ratio.

## 5 Conclusion

The field experiments showed that the porous structure of biochar and its carbon source can effectively improve soil structure and carbon storage. The proportion of soil large aggregates and the stability of aggregates were significantly increased. Biochar combined with N fertilizer provided an abundance of living space and nutrients for soil microorganisms, but microbial activity and abundance were limited by carbon input and soil nitrogen availability. The effect of excessive N application was unsatisfactory, which affects the further improvement of soil microbial abundance. This study highlighted that biochar combined with N fertilizer application could be a potential option for mitigating soil degradation, reasonable applying N, and enhancing soil carbon storage, which would support sustainable use of Mollisols. In the future, we will further investigate the long-term effects of biochar application on soil C and N cycles in agroecosystem.

## Credit authorship contribution statement

Jing Sun: Investigation, Experimentation, Data collection and analysis, manuscript writing. Xinrui Lu and Guoshuang Chen: Revise the manuscript. Xiujun Li: Concept and design, Project administration, Funding acquisition. Nana Luo and Qilin Zhang: Investigation, Material preparation, and Experimentation. The final manuscript was read and approved by all authors.

## Acknowledgement

We thank Ezemaduka Anastasia Ngozi (Northeast institute of Geography and Agroecology, Chinese Academy of Sciences) for her editorial assistance. This work was supported by research grants from the  
465 the Strategic Priority Research Program of the Chinese Academy of Sciences (No. XDA28020401, XDA23070500), National Science Foundation of China (No. 41877024), and Key Laboratory Foundation of Mollisols Agroecology (2020ZKHT-05).

## Declaration of Competing Interest

The authors declare no conflict of interest.

## References

- An, N., Zhang, L., Liu, Y., Shen, S., Li, N., Wu, Z., et al.: Biochar application with reduced chemical fertilizers improves soil pore structure and rice productivity. *Chemosphere* 298. <https://doi.org/10.1016/j.chemosphere.2022.134304>, 2022.
- Aneseyee, A. B., Wolde, T.: Effect of biochar and inorganic fertilizer on the soil properties and  
475 growth and yield of onion (*Allium cepa*) in tropical Ethiopia. *Scientific World Journal*. 5582697, 9. <https://doi.org/10.1155/2021/5582697>, 2021.
- Antonello B., Fabio T., Johan B.: Refining physical aspects of soil quality and soil health when exploring the effects of soil degradation and climate change on biomass production: an Italian case study. *SOIL*, 5, 1–14. <https://doi.org/10.5194/soil-5-1-2019>, 2019.
- 480 Bai, T., Wang, P., Ye C., Hu S.: Form of nitrogen input dominates n effects on root growth and soil aggregation: a meta-analysis. *Soil Biology & Biochemistry*, 157(1). <https://doi.org/10.1016/j.soilbio.2021.108251>, 2021.
- Baiamonte, G., Pasquale, C. D., Marsala, V., G Cimò, Alonzo G, Crescimanno G.: Structure alteration of a sandy-clay soil by biochar amendments. *Journal of Soils & Sediments* 15(4),  
485 816-824. <https://doi.org/10.1007/s11368-014-0960-y>, 2015.

Bottinelli, N., Angers, D. A., Hallaire, V., Michot, D., Guillou, C. L., Cluzeau, D.: Tillage and fertilization practices affect soil aggregate stability in a humic cambisol of northwest France. Soil and Tillage Research 170, 14-17. <https://doi.org/10.1016/j.still.2017.02.008>, 2017.

Chaganti, V. N., Crohn D. M.: Evaluating the relative contribution of physicochemical and biological factors in ameliorating a saline-sodic soil amended with composts and biochar and leached with reclaimed water. Geoderma 259-260, 45-55. <https://doi.org/10.1016/j.geoderma.2015.05.005>, 2015.

Chen, J., Chen, D., Xu, Q., Fuhrmann, J. J., Sun, X.: Organic carbon quality, the composition of main microbial groups, enzyme activities, and temperature sensitivity of soil respiration of an acid paddy soil treated with biochar. Biology & Fertility of Soils 55(2). <http://dx.doi.org/10.1007/s00374-018-1333-2>, 2018.

Chen, J., Liu, X., Zheng, J., Zhang, B., Yu, X.: Biochar soil amendment increased bacterial but decreased fungal gene abundance with shifts in community structure in a slightly acid rice paddy from southwest China. Applied Soil Ecology 71, 33-44. <http://dx.doi.org/10.1016/j.apsoil.2013.05.003>, 2013.

Chen, J., Sun, X., Zheng, J., Zhang, X., Liu, X., Bian, R.: Biochar amendment changes the temperature sensitivity of soil respiration and composition of microbial communities 3 years after incorporation in an organic carbon-poor dry cropland soil. Biology & Fertility of Soils. <http://dx.doi.org/10.1007/s00374-017-1253-6>, 2018.

Chen, L., Li, X., Peng, Y., Xiang, P., Zhou, Y., Yao, B.: Co-application of biochar and organic fertilizer promotes the yield and quality of red pitaya (*Hylocereus polyrhizus*) by improving soil properties. Chemosphere 294, 133619. <https://doi.org/10.1016/j.chemosphere.2022.133619>, 2022.

Chen, Y., M., Xu, X., Jiao X., G., et al.: Responses of labile organic nitrogen fractions and enzyme activities in eroded mollisols after 8-year manure amendment. Scientific Reports. <https://doi.org/10.1038/s41598-018-32649-y>, 2018.

- Dong, D., Wang, C., Zwieten, L. V., Wang, H., Wu, W.: An effective biochar-based slow-release fertilizer for reducing nitrogen loss in paddy fields. *Journal of Soils & Sediments* 20(8):3027-3040. <https://doi.org/10.1007/s11368-019-02401-8>, 2020.
- 515 Dong, X., Guan, T., Li, G., Lin Q, Zhao, X.: Long-term effects of biochar amount on the content and composition of organic matter in soil aggregates under field conditions. *Journal of Soils & Sediments* 16(5), 1481-1497. <http://dx.doi.org/10.1007/s11368-015-1338-5>, 2016.
- Du, Z. L., Zhao, J. K., Wang, Y. D.: Biochar addition drives soil aggregation and carbon sequestration in aggregate fractions from an intensive agricultural system. *Journal of Soil & Sediments*. <http://dx.doi.org/10.1007/s11368-015-1349-2>, 2017.
- 520 Eswaran, H., Reich, P., Padmanabhan, E.: *World soil resources: opportunities and challenges*. CRC Press, Taylor and Francis Group. 29–52, 2011
- Fungo, B., Lehmann, J., Kalbitz, K., Thion, O. M., Okeyo, I., Tenywa, M.: Aggregate size distribution in a biochar-amended tropical ultisol under conventional hand-hoe tillage. *Soil & Tillage Research* 165, 190-197. <https://doi.org/10.1016/j.still.2016.08.012>, 2017.
- 525 Gaia, P., Elisa P., Maria, C., Laura E.: Long-term conservation tillage and nitrogen fertilization effects on soil aggregate distribution, nutrient stocks and enzymatic activities in bulk soil and occluded microaggregates - sciencedirect. *Soil and Tillage Research*, 196. <https://doi.org/10.1016/j.still.2019.104482>, 2020.
- 530 Gao, Y., Xue, S. A., Kl, B., Tl, A., Wz, A., Yong, W. C.: Mixture of controlled-release and conventional urea fertilizer application changed soil aggregate stability, soil humic acid molecular composition, and nitrogen uptake. *Science of The Total Environment*. <http://dx.doi.org/10.1016/j.scitotenv.2021.147778>, 2021.
- Grunwald, D., Kaiser, M., Ludwig, B.: Effect of biochar and organic fertilizers on C mineralization and macro-aggregate dynamics under different incubation temperatures. *Soil & Tillage Research* 3612(7). <http://dx.doi.org/10.1016/j.still.2016.01.00>, 2016.
- 535 He, M., Xiong, X., Wang, L.: A critical review on performance indicators for evaluating soil biota and soil health of biochar-amended soils. *Journal of Hazardous Materials* 414(20):125378. <https://doi.org/10.1016/j.jhazmat.2021.125378>, 2021.

- 540 Hu, L., Li, S., Li, K., Huang, H., Wan, W., Huang, Q.: Effects of Two Types of Straw Biochar on the Mineralization of Soil Organic Carbon in Farmland. <https://doi.org/10.3390/su122410586>, 2020.
- Islam, M. U., Jiang, F., Guo, Z., Peng, X.: Does biochar application improve soil aggregation? A meta-analysis. *Soil & Tillage Research* 209, 104926. <https://doi.org/10.1016/j.still.2020.104926>, 2021.
- 545 Jia, X., Zhong, Y., Liu, J., Zhu, G., Shang, G. Z., Yan, W.: Effects of nitrogen enrichment on soil microbial characteristics: from biomass to enzyme activities. *Geoderma* 366, 114256. <https://doi.org/10.1016/j.geoderma.2020.114256>, 2020.
- Jiang, X. Y., Karolien, Denef, Catherine, E., et al.: Controls and dynamics of biochar decomposition and soil microbial abundance, composition, and carbon use efficiency during long-term biochar-amended soil incubations. *Biology & Fertility of Soils* 52, 1–14. <https://doi.org/10.1007/s00374-015-1047-7>, 2016.
- 550 Joseph, S. D., Camps-Arbestain M., Lin, Y., Munroe P., Chiaa, C. H.: An investigation into the reactions of biochar in soil. *Soil Research* 48(7), 501-515. <http://dx.doi.org/10.1071/SR10009>, 2010.
- 555 Khadem, A., Raiesi, F., Besharati, H., Khalaj, M. A.: The effects of biochar on soil nutrients status, microbial activity, and carbon sequestration potential in two calcareous soils. *Biochar*, 3(1), 12:105–116. <https://doi.org/10.1007/s42773-020-00076-w>, 2021.
- Kimetu, J. M., Lehmann, J.: Stability and stabilization of biochar and green manure in soil with different organic carbon contents. *Soil Research* 48(7), 577-585. <https://doi.org/10.1071/SR10036>, 2010.
- 560 Kung, C. C., Kong, F., Choi, Y.: Pyrolysis and biochar potential using crop residues and agricultural wastes in China. *Ecological Indicators* 51, 139-145. <https://doi.org/10.1016/j.ecolind.2014.06.043>, 2015.
- 565 Leonard, Githinji.: Effect of biochar application rate on soil physical and hydraulic properties of a sandy loam. *Archives of Agronomy & Soil Science*. <https://10.1080/03650340.2013.821698>, 2014.



- Li, C. Z., Zhang, H., Yao, W. J., Xu, C., Wu, D., Wang, J. D., Ai, Y. C., Zhang, Y. C.: Effects of biochar application combined with nitrogen fertilizer on soil physicochemical properties and winter wheat yield in the typical ancient region of the yellow river, China. Chinese Journal of Applied Ecology 31(10), 3424-3432. <https://doi.org/10.13287/j.1001-9332.202010.028>, 2020.
- Li, F., Qiu, P., Shen, B., Shen, Q.: Soil aggregate size modifies the impacts of fertilization on microbial communities. Geoderma 343, 205–214. <http://dx.doi.org/10.1016/j.geoderma.2019.02.039>, 2019.
- Li, L. C., Yang, M. Y., Li J. C., Bol, Roland, Du Z. L., Wu D.: Potential denitrification activity response to long-term nitrogen fertilization- A global meta-analysis. Journal of Cleaner Production 336:130451. <https://doi.org/10.1016/j.jclepro.2022.130451>, 2022.
- Li, L.J., Burger, M., Du, S.L., Zou, W.X., You, M.Y., Hao, X.X., Lu, X.C., Zheng, L., Han, X.Z.: Change in soil organic carbon between 1981 and 2011 in croplands of Heilongjiang Province, northeast China. Journal of the Science of Food and Agriculture, 96: 1275-1283, 2016.
- Lin, H. Y., Zhou, M. H., Zhang, Bowen., et al.: Effects of long-term application of biochar and straw on soil aggregate organic carbon in purple slope farmland. Chinese Journal of Eco-Agriculture 28(1):8, 2020.
- Luo, C., Yang, J., Chen, W., Han, F.: Effect of biochar on soil properties on the Loess Plateau: Results from field experiments. Geoderma 369:114323. <https://doi.org/10.1016/j.geoderma.2020.114323>, 2020.
- Luo, S., Wang, S., Tian, L., Li, S., Li, X., Shen, Y. et al.: Long-term biochar application influences soil microbial community and its potential roles in semiarid farmland. Applied Soil Ecology 117-118, 10-15. <https://doi.org/10.1016/j.apsoil.2017.04.024>, 2017.
- Madari, B. E., Silva, M., Carvalho, M., Maia, A., Petter, F. A., Santos, J., et al.: Properties of a sandy clay loam haplic ferralsol and soybean grain yield in a five-year field trial as affected by biochar amendment. Geoderma 305, 100-112. <http://dx.doi.org/10.1016/j.geoderma.2017.05.029>, 2017.

Mei, N., Zhang, X., Wang, X., Peng, C., Gu, Y.: Effects of 40 years of applications of inorganic and organic fertilization on soil bacterial community in a maize agroecosystem in northeast china. *European Journal of Agronomy* 130(4), 126332. <https://doi.org/10.1016/j.eja.2021.126332>, 2021.

600 Mete, F. Z., Mia, S., Dijkstra, F. A., Abuyusuf, M., Hossain, A., Agronomy, D. O.: Synergistic Effects of Biochar and NPK Fertilizer on Soybean Yield in an Alkaline Soil. *Pedosphere* 25(05), 713-719. [https://doi.org/10.1016/S1002-0160\(15\)30052-7](https://doi.org/10.1016/S1002-0160(15)30052-7), 2015.

Miller, R. M., Jastrow, J. D.: Hierarchy of root and mycorrhizal interactions with soil aggregation. *soil biol biochem* 22: 579. *Soil Biology & Biochemistry*, 22(5), 579–584. [https://doi.org/10.1016/0038-0717\(90\)90001-G](https://doi.org/10.1016/0038-0717(90)90001-G), 1990.

605 Ng, E. L., Patti, A. F., Rose, M. T., Scheffe, C. R., Wilkinson, K., Smernik, R. J., et al.: Does the chemical nature of soil carbon drive the structure and functioning of soil microbial communities? *Soil Biology and Biochemistry*. 70 (2014) 54-61. <http://dx.doi.org/10.1016/j.soilbio.2013.12.004>, 2014.

610 Oksana, Coban, Gerlinde, B. De Deyn., Martine, van der Ploeg: Soil microbiota as game-changers in the restoration of degraded lands. *Restoration Ecology* 375(6584). <https://doi.org/10.1126/science.abe0725>, 2022.

Palansooriya, K. N., Wong, J., Hashimoto, Y., Huang, L., Rinklebe, J., Chang, S. X.: Response of microbial communities to biochar-amended soils: a critical review. *Biochar*. <https://doi.org/10.1007/s42773-019-00009-2>, et al. 2019.

Peng, X., Horn, R., Hallett, P.: Soil structure and its functions in ecosystems: phase matter & scale matter. *Soil & Tillage Research* 146, 1-3. <http://dx.doi.org/10.1016/j.still.2014.10.017>, 2015.

Plaza, C., Giannetta, B., Fernández, J., M., López-de-Sá, Esther G., Polo, A., Gascó, G., et al.: Response of different soil organic matter pools to biochar and organic fertilizers. *Agriculture Ecosystems & Environment* 225:150-159. [10.1016/j.agee.2016.04.014](https://doi.org/10.1016/j.agee.2016.04.014), 2016.

620

Scow, Kate, M., Parikh, Sanjai, J.: Biochar additions can enhance soil structure and the physical stabilization of C in aggregates. *Geoderma* 303: 110-117. <https://doi.org/10.1016/j.geoderma.2017.05.027>, et al. 2017.

625 Sekaran, U., Sandhu, S. S., Qiu, Y., Kumar, S., Hernandez, J.: Biochar and manure addition influenced soil microbial community structure and enzymatic activities at eroded and depositional landscape positions. *Land Degradation & Development* (5). <https://doi.org/10.1002/ldr.3508>, 2019.

Shi, D. L., Wang, X. L., Duan, J. J., et al.: Effects of nitrogen reduction combined with biochar application on soil organic carbon active components and mineralization in yellow soil paddy field. *Chinese Journal of Applied Ecology* 31(12):8. <https://doi.org/10.13287/j.1001-9332.202012.027>, 2020.

Sokol, N. W., Bradford, M. A.: Microbial formation of stable soil carbon is more efficient from belowground than aboveground input. *Nature Geoscience*, 12(1). <https://doi.org/10.1038/s41561-018-0258-6>, 2019.

635 Song, D., Chen, L., Zhang, S., Zheng, Q., Wang, X.: Combined biochar and nitrogen fertilizer change soil enzyme and microbial activities in a 2-year field trial. *European Journal of Soil Biology* 99, 103212. <https://doi.org/10.1016/j.ejsobi.2020.103212>, 2020.

Thiet, R. K., Frey S. D., Six, J.: Do growth yield efficiencies differ between soil microbial communities differing in fungal: bacterial ratios? Reality check and methodological issues. *Soil Biology and Biochemistry*, 38: 837-844. <https://doi.org/10.1016/j.soilbio.2005.07.010>, 2006.

Tian, J., Wang, J., Dippold, M., Gao, Y., Blagodatskaya, E., Kuzyakov, Y.: Biochar affects soil organic matter cycling and microbial functions but does not alter microbial community structure in paddy soil. *Sci. Total Environ* 556, 89–97. <https://doi.org/10.1016/j.scitotenv.2016.03.010>, 2016.

645 Tisdall, JM., Oades, JM.: Organic matter and water-stable aggregates in soils. *Journal of Soil Science* 32-2. <https://doi.org/10.1111/j.1365-2389.1982.tb01755.x>, 1982.

- Trivedi, P., Delgado-Baquerizo, M., Jeffries, T. C., Trivedi, C., Anderson, I. C., Mcnee, M. et al.:  
650 Soil aggregation and associated microbial communities modify the impact of agricultural  
management on carbon content. *Environmental Microbiology* 19(8).  
<https://doi.org/10.1111/1462-2920.13779>, 2017.
- Wang, C., Chen, D., Shen, J., Yuan, Q., Wu, J.: Biochar alters soil microbial communities and  
potential functions 3–4 years after amendment in a double rice cropping system.  
655 *Agriculture Ecosystems & Environment* 311(4), 107291.  
<https://doi.org/10.1016/j.agee.2020.107291>, 2021.
- Wang, C., Jiang, K., Lu, Y. et al.: Effects of different organic materials application on aggregate  
composition and stability of latosol. *Soil Science* 50(6):7.  
<https://doi.org/10.19336/j.cnki.trtb.2019.06.10>, 2019.
- 660 Wang, H. Y., Nie, Y., Clayton R. B., Wang, L., Chen, Q. H., et al.: Fertilization alters microbial  
community composition and functional patterns by changing the chemical nature of soil  
organic carbon: A field study in a Halosol. *Geoderma*. 292 (2017) 17–24.  
<http://dx.doi.org/10.1016/j.geoderma.2017.01.006>, 2017.
- Wang, R. F., Zhang, J. W., Dong, S. T., Liu, P.: The present situation of maize straw resource  
665 utilization and its effect in main maize production regions of china. *Chinese Journal of  
Applied Ecology* 22(6), 1504-1510, 2011.
- Weyers, S. L., Spokas, K. A.: Impact of biochar on earthworm populations: a review. *Applied &  
Environmental Soil Science* 2011, 1-12. <http://dx.doi.org/10.1155/2011/541592>, 2011.
- Xiu, L., Zhang, W., Sun, Y. et al.: Effects of biochar and straw returning on the key cultivation  
670 limitations of Albic soil and soybean growth over 2 years. *Catena* 173:481-493.  
<https://doi.org/10.1016/j.catena.2018.10.041>, 2019.
- Xiu, L., Zhang, W., Wu, D. et al.: Biochar can improve biological nitrogen fixation by altering the  
root growth strategy of soybean in Albic soil. *Science of The Total Environment*  
773(1):144564. <https://doi.org/10.1016/j.scitotenv.2020.144564>, 2021.
- 675 Xu, G., Song, J., Zhang, Y., Lv, Y.: Effects of Biochar Application on Soil Organic Carbon  
Mineralization during Drying and Rewetting Cycles. *Bioresources* 14(4) 9957-9967, 2019.

Xue, B., Huang, L., Huang, Y., et al.: Straw management influences the stabilization of organic carbon by Fe (oxyhydr) oxides in soil aggregates. *Geoderma* 358. <https://doi.org/10.1016/j.geoderma.2019.113987>, 2019.

680 Yin, D. W., Shi, M. J., et al.: Biochar as a tool to improve physicochemical properties of Chinese albic soils. *Journal of Biobased Materials and Bioenergy* 12(1), 102-108. <https://doi.org/10.1166/jbmb.2018.1735>, 2018.

Ying, D.: Effects of heavy metal pollution on organic carbon mineralization and microbial community structure in paddy soil under corn stalk addition. Nanjing Agricultural University, 2018.

685 Yuan, J. J., Tong, Y. A., Lu, S. H., Yuan, G. J.: Effects of combined application of biochar and nitrogen fertilizer on soil fertility, yield, and quality of Chinese jujube. *Plant Nutrition and Fertilizer Science*, 23(2), 8. <https://doi.org/10.11674/zwyf.16285>, 2017.

Yuan, Y. R., Zhang, B., Han, X. Z., et al.: Higher rates of manure application lead to greater accumulation of both fungal and bacterial residues in macroaggregates of clay soil. *Soil Biology & Biochemistry*. <https://doi.org/10.1016/j.soilbio.2015.02.015>, 2015.

690 Zhang, H. J., Ding, W., X., Yu, H., Y., He, X., H.: Carbon uptake by a microbial community during 30-day treatment with <sup>13</sup>C-glucose of a sandy loam soil fertilized for 20 years with NPK or compost as determined by a GC–C–IRMS analysis of phospholipid fatty acids. *Soil Biology and Biochemistry*. 57 (2013) 228e236. <https://doi.org/10.1016/j.soilbio.2012.08.024>, 2013.

Zhang, Q., Du, Z. L., Lou, Y., He, X.: A one-year short-term biochar application improved carbon accumulation in large macroaggregate fractions. *Catena* 127, 26-31. <https://doi.org/10.1016/j.catena.2014.12.009>, 2015.

700 Zhang, S., Cui, J., Wu, H., Zheng, Q., Zhang, S.: Organic carbon, total nitrogen, and microbial community distributions within aggregates of calcareous soil treated with biochar. *Agriculture Ecosystems & Environment* 314:107408. <https://doi.org/10.1016/j.agee.2021.107408>, 2021.

- Zhang, Y., Li, X., Gregorich, E. G., McLaughlin, N. B., Liang, A.: Evaluating storage and pool size  
705 of soil organic carbon in degraded soils: tillage effects when crop residue is returned. *Soil  
and Tillage Research* 192, 215-221. [https://doi.org/ 10.1016/j.still.2019.05.013](https://doi.org/10.1016/j.still.2019.05.013), 2019.
- Zhang, Y., Li, X., Gregorich, E. G., McLaughlin, N. B., Zhang, X., Guo, Y., et al.: No-tillage with  
continuous maize cropping enhances soil aggregation and organic carbon storage in  
northeast china. *Geoderma* 330, 204-211. <https://doi.org/10.1016/j.geoderma.2018.05.037>,  
710 2018.
- Zhang, Z. M., Jun, Y., Han, X. Z., Zou, W. X., et al.: Labile organic carbon fractions drive soil  
microbial communities after long-term fertilization. *Global Ecology and Conservation*  
32(2021) e01867. <https://doi.org/10.1016/j.gecco.2021.e01867>, 2021.
- Zheng, W., Zhao, Z., Lv, F., Yin, Y., Zhai, B.: Fungal alpha diversity drives the stochasticity of  
715 bacterial and fungal community assembly in soil aggregates in the apple orchard. *Soil  
sampling and aggregate fractionation*. <http://dx.doi.org/10.21203/rs.3.rs-56672/v1>, 2020.
- Zhou, H., Fang, H., Zhang, Q., Wang, Q., Chen, C., Mooney, S. J., Peng, X. H., Du, Z. L.: Biochar  
enhances soil hydraulic function but not soil aggregation in a sandy loam. *Eur. J. Soil Sci*  
70, 291–300. <https://doi.org/10.1111/ejss.12732>, 2019.